

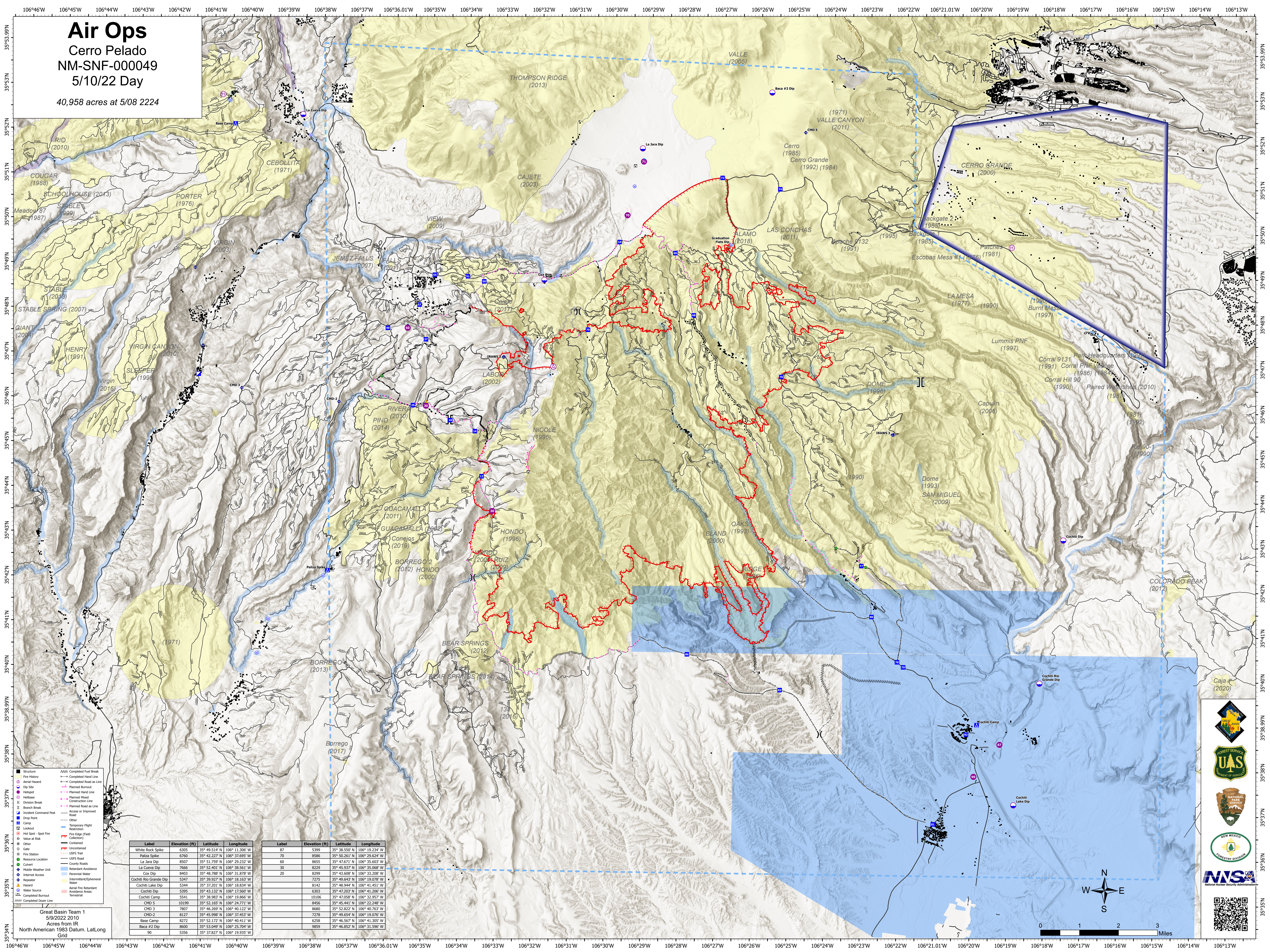
Air Ops

Cerro Pelado

NM-SNF-000049

5/10/22 Day

40,958 acres at 5/08 2224



Label	Elevation (ft)	Latitude	Longitude
White Rock Spike	6305	35° 49.514' N	106° 11.306' W
Paliza Spike	6760	35° 42.227' N	106° 37.695' W
La Jara Dip	8507	35° 51.759' N	106° 29.232' W
La Cueva Dip	7666	35° 52.401' N	106° 38.561' W
Coc Dip	8403	35° 48.788' N	106° 31.878' W
Cochiti Rio Grande Dip	5347	35° 39.927' N	106° 18.163' W
Cochiti Lake Dip	5344	35° 37.201' N	106° 18.834' W
Cochiti Dip	5395	35° 43.132' N	106° 17.560' W
Cochiti Camp	5541	35° 38.983' N	106° 19.866' W
CHD-3	10139	35° 52.165' N	106° 24.070' W
CHD-2	7807	35° 46.359' N	106° 40.122' W
CHD-1	8127	35° 45.998' N	106° 37.453' W
Base Camp	8272	35° 52.172' N	106° 40.411' W
Baca #2 Dip	8600	35° 53.049' N	106° 25.704' W
90	5356	35° 37.827' N	106° 19.935' W

Label	Elevation (ft)	Latitude	Longitude
87	5399	35° 38.550' N	106° 19.234' W
70	8586	35° 50.261' N	106° 29.624' W
60	8655	35° 47.671' N	106° 35.603' W
30	8229	35° 45.937' N	106° 35.068' W
20	8299	35° 43.608' N	106° 33.208' W
7275	35° 49.643' N	106° 19.078' W	
8142	35° 48.944' N	106° 41.451' W	
6303	35° 47.203' N	106° 41.206' W	
10106	35° 47.058' N	106° 32.957' W	
9486	35° 45.411' N	106° 22.248' W	
8650	35° 52.822' N	106° 40.763' W	
7278	35° 49.654' N	106° 19.076' W	
6258	35° 46.567' N	106° 41.305' W	
9859	35° 46.852' N	106° 31.596' W	

Great Basin Team 1
5/9/2022 2010
Acres from IR
North American 1983 Datum, Lat/Long
Grid

