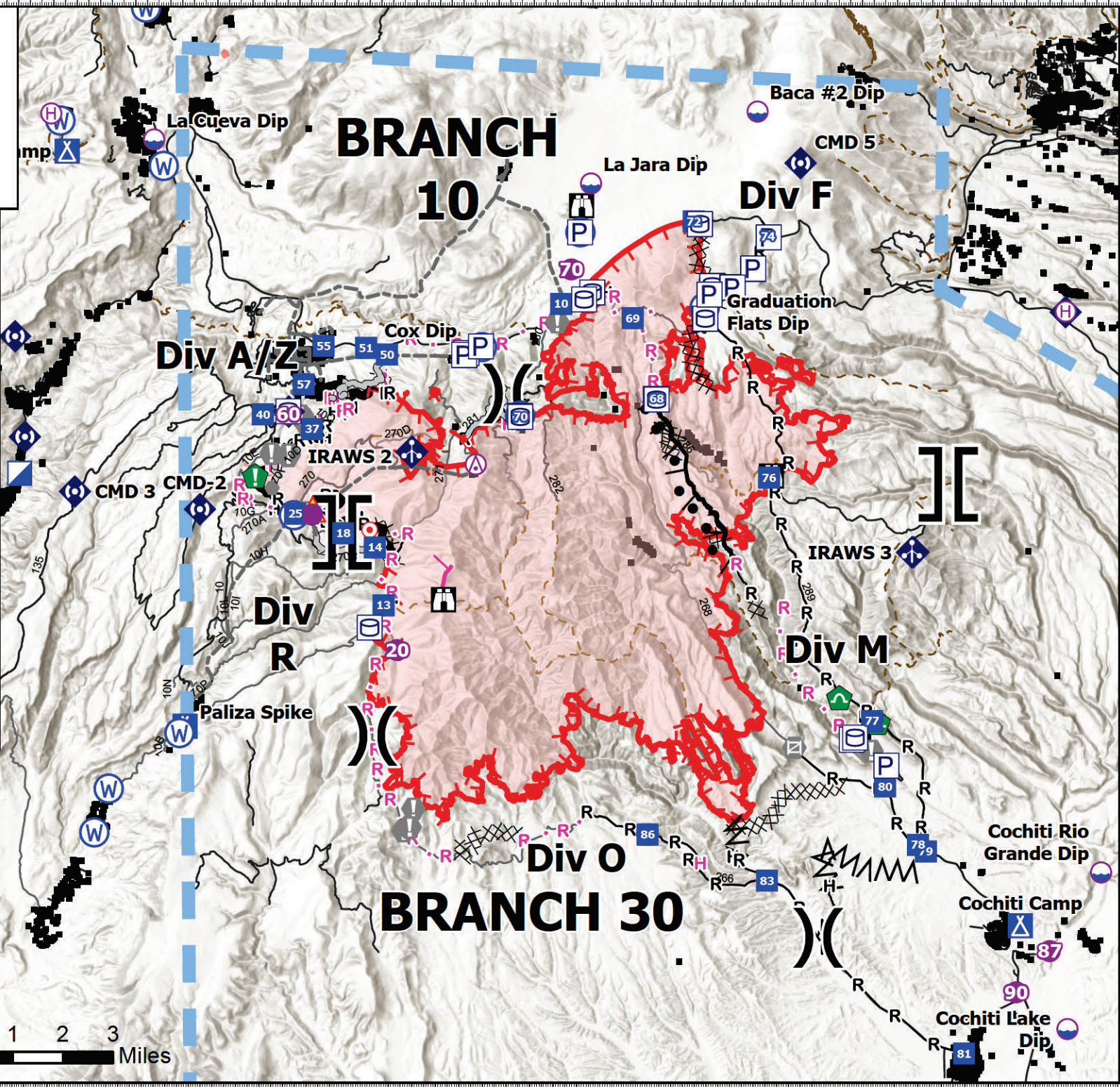


# IAP

Cerro Pelado  
NM-SNF-000049  
5/10/22 Day

40,958 acres at 5/08 2224

<b>Air Operations</b>	<b>Communications</b>
○ Aerial Hazard	◆ Mobile Weather Unit
○ Dip Site	◆ Internet Access
○ Helispot	◆ Repeater
○ Helibase	<b>Safety</b>
<b>Assignment Breaks</b>	▲ Hazard
⌘ Division Break	<b>Water</b>
Branch Break	○ Water Source
<b>Logistics</b>	— Completed Burnout
▣ Incident Command Post	⊗ Completed Dozer Line
■ Drop Point	△ Completed Fuel Break
⊠ Camp	— Completed Hand Line
<b>Operations</b>	— Completed Road as Line
⊠ Lookout	— Planned Burnout
<b>Fire</b>	— Planned Hand Line
○ Hot Spot - Spot Fire	— Planned Mixed Construction Line
<b>Reference</b>	— Planned Road as Line
○ Value at Risk	— Access or Improved Road
○ Other	— Other
○ Gate	— Temporary Flight Restriction
○ Fire Station	— Fire Edge (Field Collection)
<b>Repair</b>	— Contained
○ Resource Location	— Uncontained
○ Culvert	— USFS Road



Great Basin Team 1  
5/9/2022 1708  
Acres from IR  
North American 1983 Datum. Lat/Long Grid

