

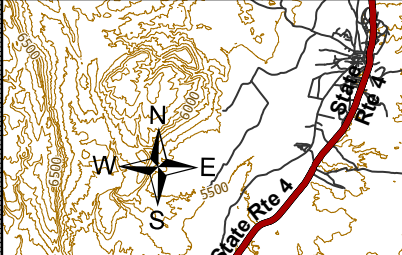
Pilot Map

Cerro Pelado
NM-SNF-000049
5/10/22 Day

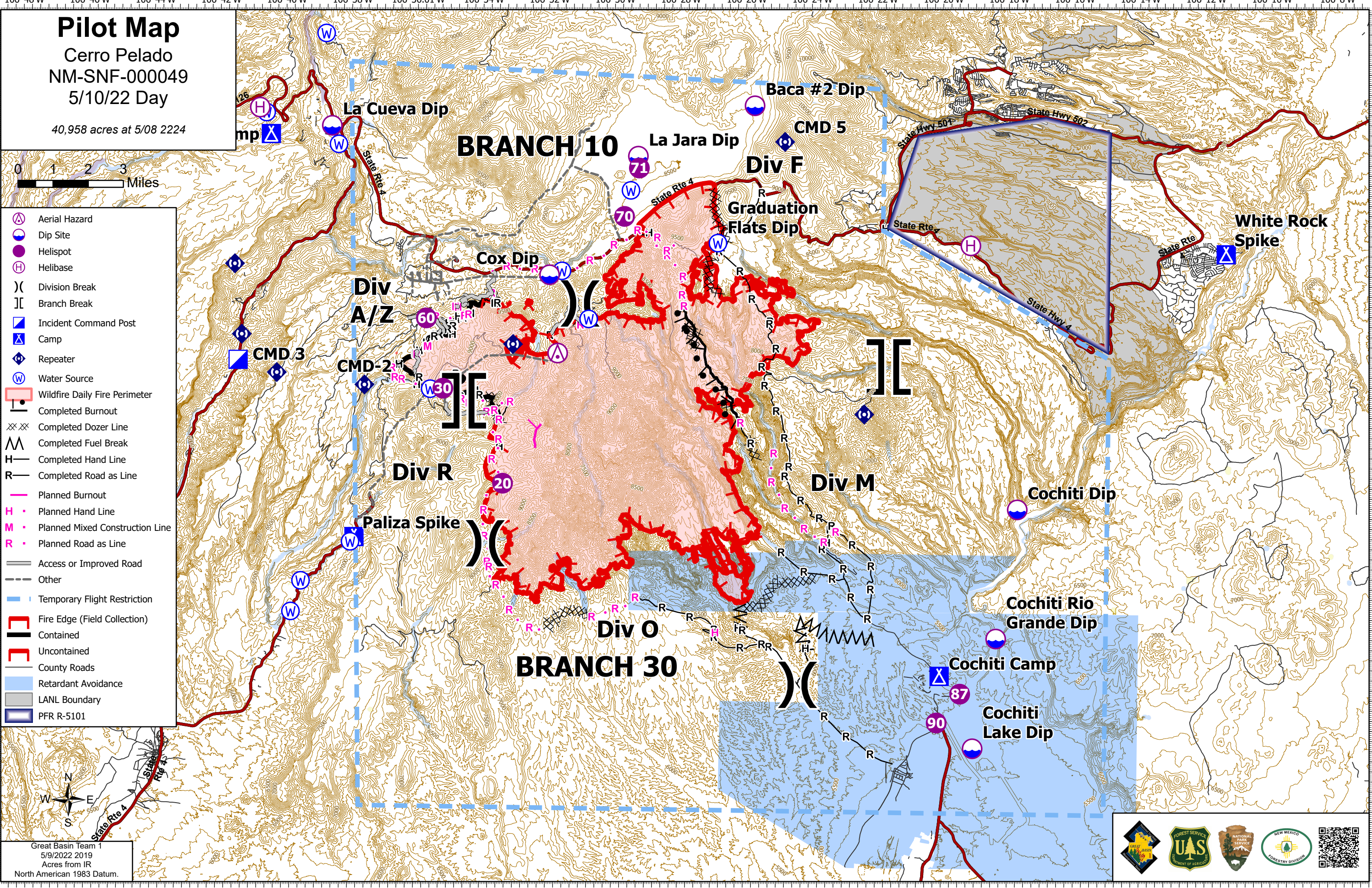
40,958 acres at 5/08 2224



- Aerial Hazard
- Dip Site
- Helispot
- Helibase
- Division Break
- Branch Break
- Incident Command Post
- Camp
- Repeater
- Water Source
- Wildfire Daily Fire Perimeter
- Completed Burnout
- Completed Dozer Line
- Completed Fuel Break
- Completed Hand Line
- Completed Road as Line
- Planned Burnout
- Planned Hand Line
- Planned Mixed Construction Line
- Planned Road as Line
- Access or Improved Road
- Other
- Temporary Flight Restriction
- Fire Edge (Field Collection)
- Contained
- Uncontained
- County Roads
- Retardant Avoidance
- LANL Boundary
- PFR R-5101



Great Basin Team 1
5/9/2022 2019
Acres from IR
North American 1983 Datum.



FeatureCategory	Label	Elevation (ft)	Latitude	Longitude
Camp	White Rock Spike	6305	35° 49.514' N	106° 11.306' W
Camp	Paliza Spike	6760	35° 42.227' N	106° 37.695' W
Dip Site	La Jara Dip	8507	35° 51.759' N	106° 29.232' W
Dip Site	La Cueva Dip	7666	35° 52.401' N	106° 38.561' W
Dip Site	Cox Dip	8403	35° 48.788' N	106° 31.878' W
Dip Site	Cochiti Rio Grande Dip	5347	35° 39.927' N	106° 18.163' W
Dip Site	Cochiti Lake Dip	5344	35° 37.201' N	106° 18.834' W
Dip Site	Cochiti Dip	5395	35° 43.132' N	106° 17.560' W
Camp	Cochiti Camp	5541	35° 38.983' N	106° 19.866' W
Repeater	CMD 5	10199	35° 52.165' N	106° 24.771' W
Repeater	CMD 3	7807	35° 46.269' N	106° 40.122' W
Repeater	CMD-2	8127	35° 45.998' N	106° 37.453' W
Camp	Base Camp	8272	35° 52.172' N	106° 40.411' W
Dip Site	Baca #2 Dip	8600	35° 53.049' N	106° 25.704' W
Helispot	90	5356	35° 37.827' N	106° 19.935' W
Helispot	87	5399	35° 38.550' N	106° 19.234' W
Helispot	70	8586	35° 50.261' N	106° 29.624' W
Helispot	60	8655	35° 47.671' N	106° 35.603' W
Helispot	30	8229	35° 45.937' N	106° 35.068' W
Helispot	20	8299	35° 43.608' N	106° 33.208' W
Repeater		7275	35° 49.643' N	106° 19.078' W
Repeater		8142	35° 48.944' N	106° 41.451' W
Repeater		6303	35° 47.203' N	106° 41.206' W
Repeater		10106	35° 47.058' N	106° 32.957' W
Repeater		8456	35° 45.441' N	106° 22.248' W
Helibase		8680	35° 52.822' N	106° 40.763' W
Helibase		7278	35° 49.654' N	106° 19.076' W
Incident Command Post		6258	35° 46.567' N	106° 41.305' W
Aerial Hazard		9859	35° 46.852' N	106° 31.596' W