

**Planning**  
 Cerro Pelado  
 NM-SNF-000049  
 5/9/22 Day  
 40,958 acres at 5/08 2224

**BRANCH 10**

**Div F**

**Div A/Z**

**Div R**

**Div M**

**Div O**

**BRANCH 30**

Los Alamos

White Rock

Jemez Springs

La Cueva

Cañon

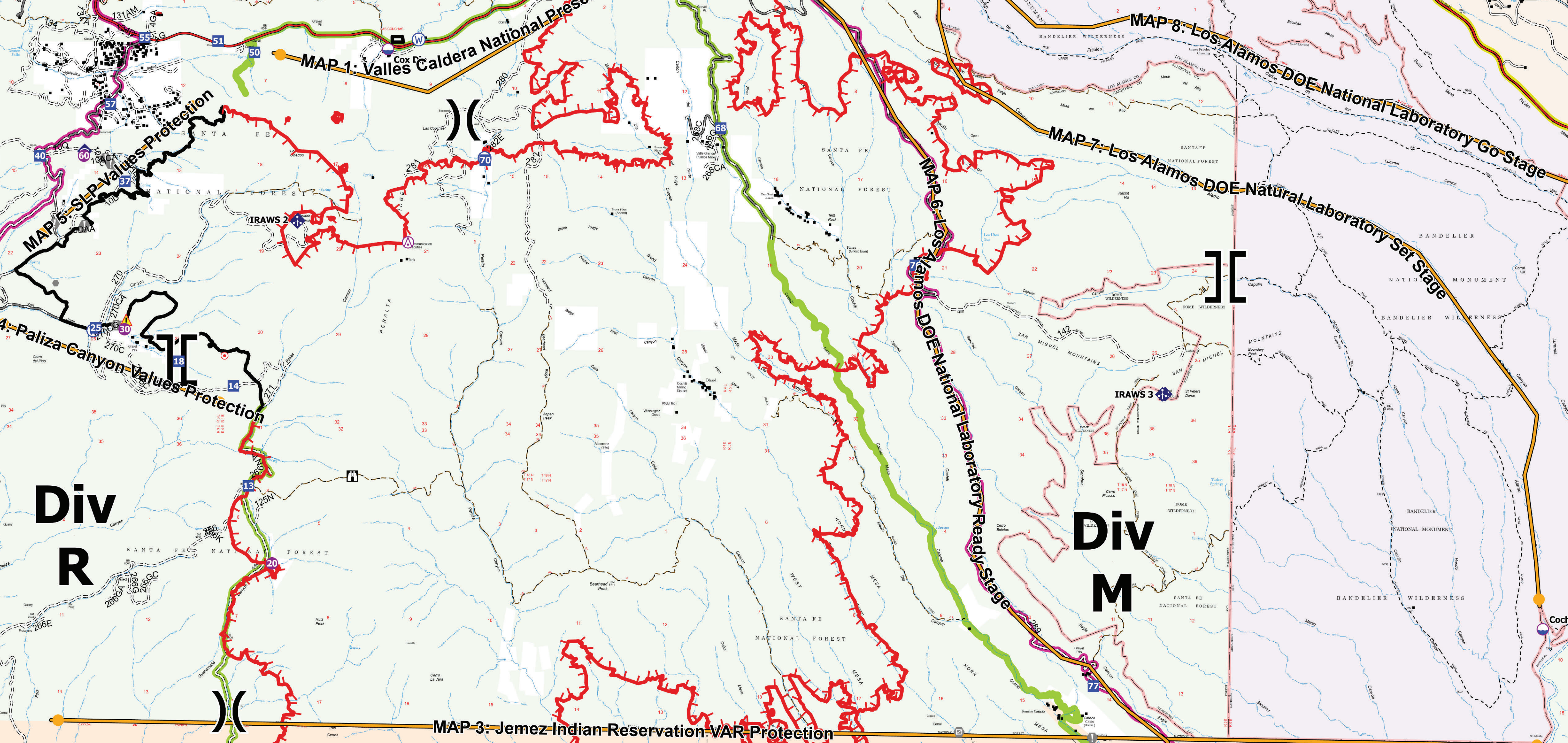
Ponderosa

Jemez Pueblo

Cochiti Lake

Cochiti

Peña Blanca



- Aerial Hazard
- Dip Site
- Hellsport
- Holloway
- Division Break
- Bureau of Indian Affairs (BIA)
- Bureau of Land Management (BLM)
- National Park Service (NPS)
- Other Federal
- State
- US Forest Service (USFS)
- Private
- Primary
- Alternate
- Contingency
- Water Source
- Management Action Point
- Contained
- Uncontained
- Incident Command Post
- Drop Point
- Camp
- Lookout
- Hot Spot - Spot Fire
- Value at Risk
- Other
- Fire Station
- Mobile Weather Unit
- Internet Access
- Repeater
- Hazard

Great Basin Team 1  
 5/9/2022 2008  
 Acres from IR  
 North American 1983 Datum