

Pueblos Ownership

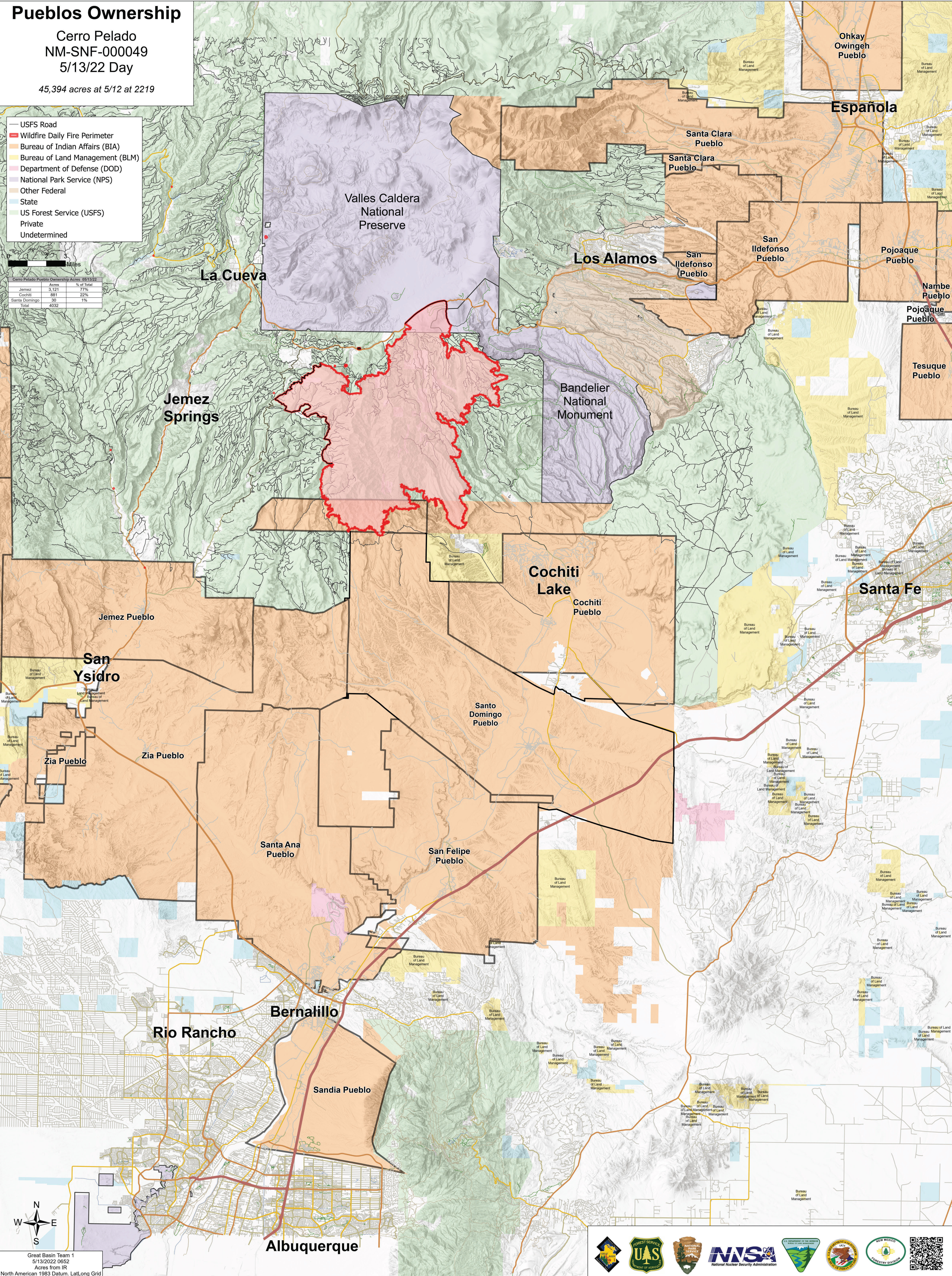
Cerro Pelado
 NM-SNF-000049
 5/13/22 Day

45,394 acres at 5/12 at 2219

- USFS Road
- Wildfire Daily Fire Perimeter
- Bureau of Indian Affairs (BIA)
- Bureau of Land Management (BLM)
- Department of Defense (DOD)
- National Park Service (NPS)
- Other Federal
- State
- US Forest Service (USFS)
- Private
- Undetermined

Cerro Pelado Pueblo Ownership Acres 5/13/22

| Pueblo | Acres | % of Total |
|---------------|--------------|------------|
| Jemez | 3,121 | 7% |
| Cochiti | 881 | 2% |
| Santa Domingo | 30 | 1% |
| Total | 4,032 | 1% |



Great Basin Team 1
 5/13/2022 0652
 Acres from IR
 North American 1983 Datum, LatLong Grid

