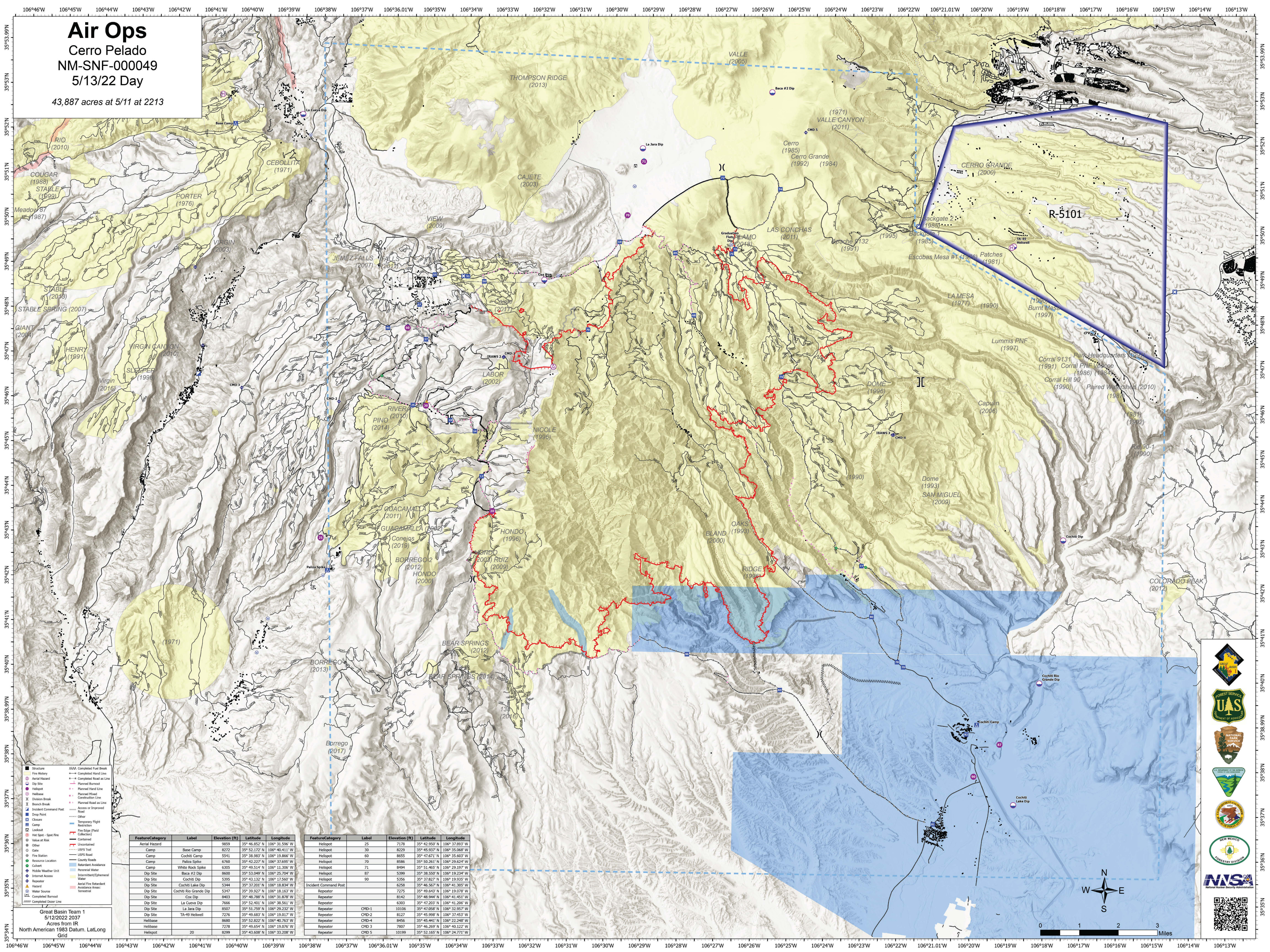


Air Ops

Cerro Pelado
 NM-SNF-000049
 5/13/22 Day
 43,887 acres at 5/11 at 2213



Feature/Category	Label	Elevation (ft)	Latitude	Longitude
Aerial Hazard	Base Camp	8272	35° 46.852' N	106° 31.596' W
Camp	Cochiti Camp	5541	35° 38.983' N	106° 19.866' W
Camp	Paliza Spoke	6760	35° 42.227' N	106° 37.695' W
Camp	White Rock Spoke	6305	35° 49.514' N	106° 11.386' W
Dip Site	Baca #2 Dip	8600	35° 53.049' N	106° 25.704' W
Dip Site	Cochiti Dip	5395	35° 43.132' N	106° 17.560' W
Dip Site	Cochiti Lake Dip	5344	35° 37.201' N	106° 18.834' W
Dip Site	Cochiti Rio Grande Dip	5347	35° 39.927' N	106° 18.163' W
Dip Site	Cox Dip	8403	35° 48.788' N	106° 31.878' W
Dip Site	La Cueva Dip	7656	35° 52.401' N	106° 38.561' W
Dip Site	La Jara Dip	8507	35° 51.759' N	106° 29.232' W
Dip Site	TA-49 Hellwell	7276	35° 49.683' N	106° 19.017' W
Hellbase		8680	35° 52.822' N	106° 40.763' W
Hellbase		7278	35° 49.654' N	106° 19.076' W
Hellspot		8299	35° 43.608' N	106° 33.208' W

Feature/Category	Label	Elevation (ft)	Latitude	Longitude
Hellspot		25	35° 42.950' N	106° 37.893' W
Hellspot		30	35° 45.937' N	106° 35.068' W
Hellspot		60	35° 47.671' N	106° 35.603' W
Hellspot		70	35° 50.261' N	106° 29.624' W
Hellspot		71	35° 51.465' N	106° 29.197' W
Hellspot		87	35° 38.552' N	106° 18.234' W
Hellspot		90	35° 37.827' N	106° 19.935' W
Incident Command Post		6258	35° 46.567' N	106° 41.305' W
Repeater		7275	35° 49.643' N	106° 19.078' W
Repeater		8142	35° 48.944' N	106° 41.451' W
Repeater		8283	35° 47.203' N	106° 41.266' W
Repeater	CMD-1	10106	35° 47.058' N	106° 32.857' W
Repeater	CMD-2	8127	35° 45.998' N	106° 37.453' W
Repeater	CMD-4	8456	35° 45.441' N	106° 22.248' W
Repeater	CMD-3	7807	35° 46.269' N	106° 40.122' W
Repeater	CMD 5	10199	35° 52.165' N	106° 24.771' W

Great Basin Team 1
 5/12/2022 2037
 Acres from IR
 North American 1983 Datum, Lat/Long
 Grid