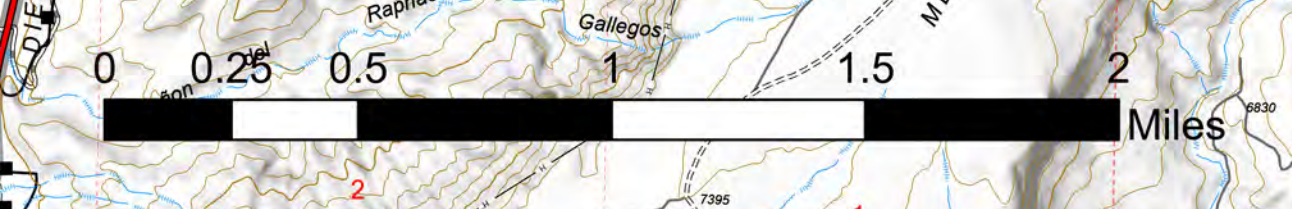
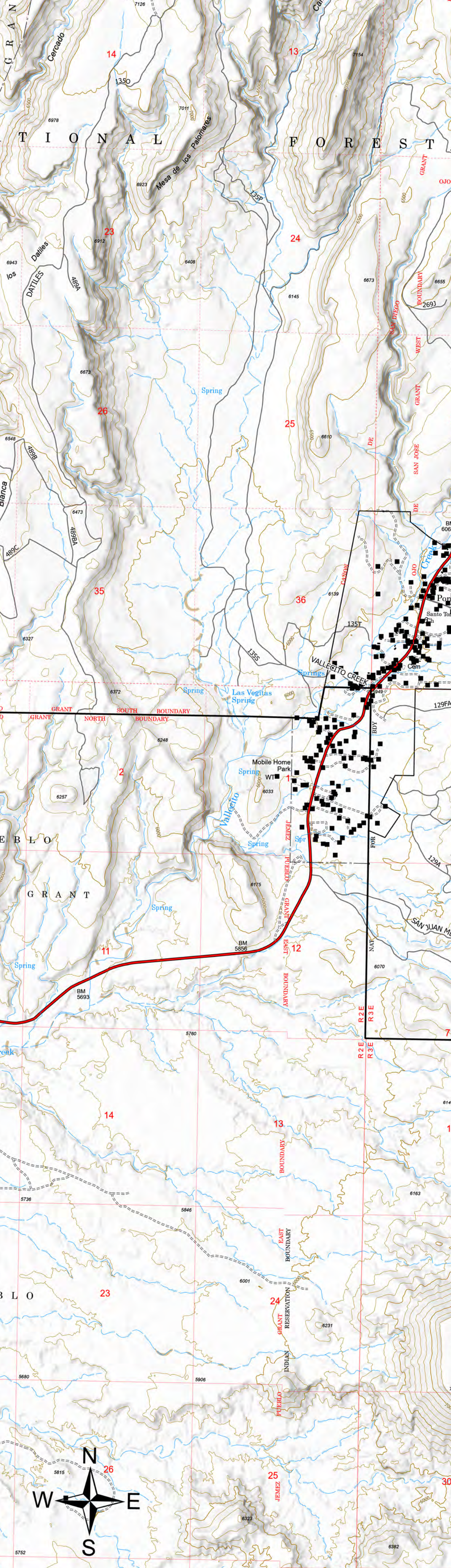


# Div R

Cerro Pelado  
NM-SNF-000049  
5/14/22 Day  
45,591 acres at 5/13 at 2228



|   |                      |   |                                 |
|---|----------------------|---|---------------------------------|
| ● | Hot Spot - Spot Fire | — | Completed Road as Line          |
| ○ | Value at Risk        | — | Planned Road as Line            |
| ○ | Gate                 | — | Planned Hand Line               |
| ○ | Repair Point         | — | Planned Road as Line            |
| ○ | Fence - Cut/Damaged  | — | Other                           |
| ○ | Downed Pole          | — | Temporary Flight Restriction    |
| ○ | Culvert              | — | Across or Improved Road         |
| ○ | Repeater             | — | Highway                         |
| ○ | Safety Zone          | — | Road - Light Duty - Dirt        |
| ○ | Water Source         | — | Road - Light Duty - Gravel      |
| ○ | Completed Dozer Line | — | Road - Light Duty - Unimproved  |
| ○ | Completed Fuel Break | — | Unimproved Composition          |
| ○ | Completed Hand Line  | — | Call other values - Roads, 100% |
| ○ | Important Roads      | — | Call other values - Roads, 100% |



Great Basin Team 1  
5/14/2022 0705  
Acres from IR  
North American 1983 Datum, Lat/Long Grid

