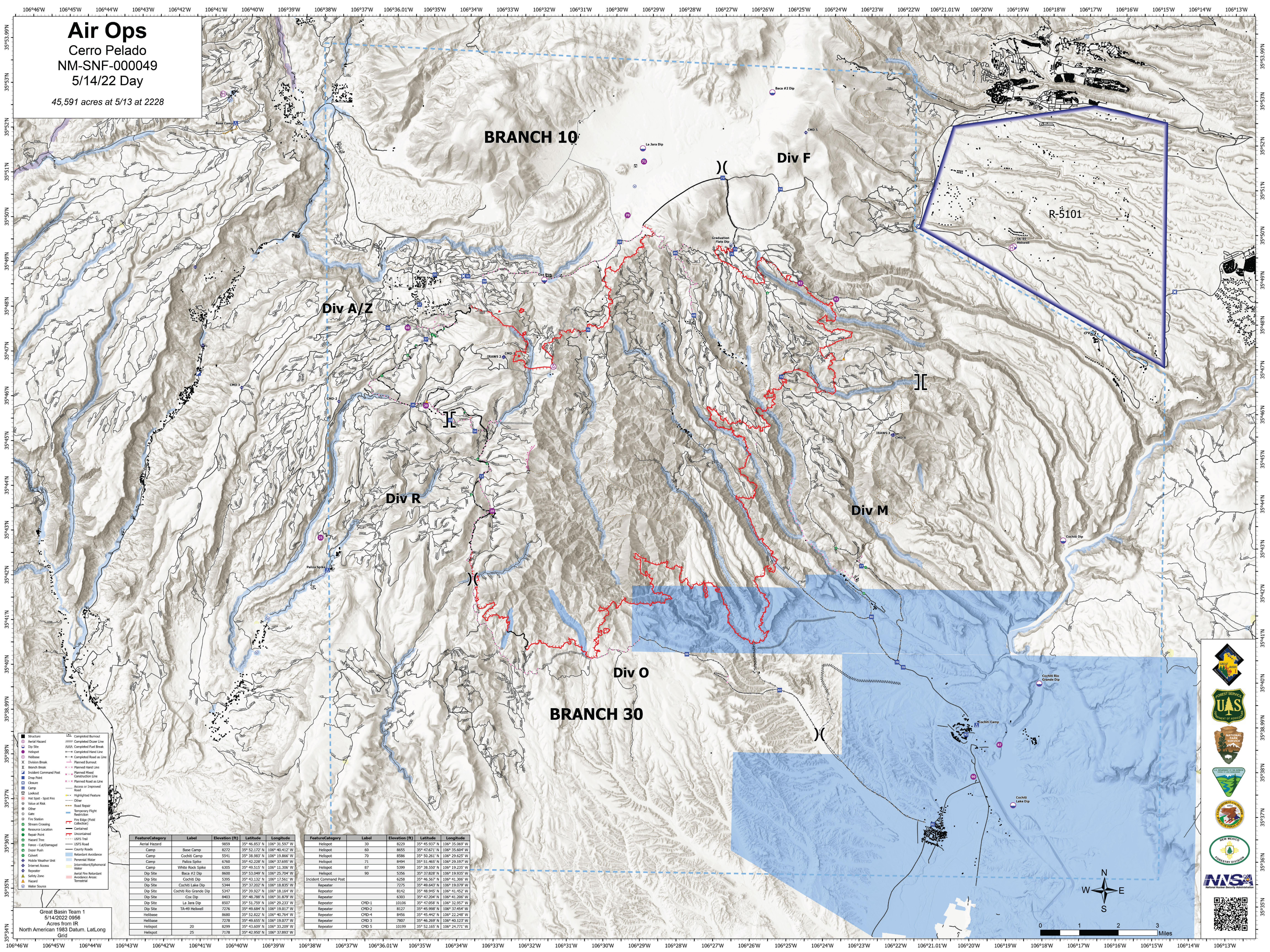


Air Ops

Cerro Pelado
NM-SNF-000049

5/14/22 Day

45,591 acres at 5/13 at 2228



- Structure
- Aerial Hazard
- Dip Site
- Helispot
- Helibase
- Division Break
- Branch Break
- Incident Command Post
- Drop Point
- Closure
- Camp
- Lookout
- Hot Spot - Spot Fire
- Value at Risk
- Other
- Fire Station
- Stream Crossing
- Resource Location
- Repair Point
- Hazard Tree
- USFS Trail
- USFS Road
- Deer Push
- Culvert
- Mobile Weather Unit
- Internal Access
- Repeater
- Safety Zone
- Hazard
- Water Source
- Completed Burnout
- Completed Deer Line
- Completed Fuel Break
- Completed Road Line
- Completed Road as Line
- Planned Burnout
- Planned Road as Line
- Planned Mixed Construction Line
- Planned Road as Line
- Access or Improved Road
- Highlighted Feature
- Other
- Road Repair
- Temporary Flight Restriction
- Gate
- Fire Edge (Field Collection)
- Uncertain
- USFS Trail
- USFS Road
- Country Roads
- Retardant Avoidance
- Perennial Water
- Intermittent/Ephemeral Water
- Wildfire Retardant Avoidance: Aerial
- Wildfire Retardant Avoidance: Terrestrial

| Feature Category | Label | Elevation (ft) | Latitude | Longitude |
|------------------|------------------------|----------------|---------------|----------------|
| Aerial Hazard | Base Camp | 9859 | 35° 46.853' N | 106° 31.597' W |
| Camp | Base Camp | 8272 | 35° 52.172' N | 106° 40.412' W |
| Camp | Cochiti Camp | 5541 | 35° 38.983' N | 106° 19.866' W |
| Camp | Paliza Spike | 6760 | 35° 42.228' N | 106° 37.695' W |
| Camp | White Rock Spike | 6305 | 35° 49.515' N | 106° 11.386' W |
| Dip Site | Baca #2 Dip | 8600 | 35° 53.849' N | 106° 25.704' W |
| Dip Site | Cochiti Dip | 5395 | 35° 43.132' N | 106° 17.561' W |
| Dip Site | Cochiti Lake Dip | 5344 | 35° 37.202' N | 106° 18.835' W |
| Dip Site | Cochiti Rio Grande Dip | 5347 | 35° 39.927' N | 106° 18.164' W |
| Dip Site | Cox Dip | 8403 | 35° 48.788' N | 106° 31.879' W |
| Dip Site | La Jara Dip | 8507 | 35° 51.759' N | 106° 29.233' W |
| Dip Site | TA-49 Hellwell | 7276 | 35° 49.684' N | 106° 19.817' W |
| Helibase | | 8680 | 35° 52.822' N | 106° 40.764' W |
| Helibase | | 7278 | 35° 49.655' N | 106° 19.077' W |
| Helispot | 20 | 8299 | 35° 43.609' N | 106° 33.209' W |
| Helispot | 25 | 7178 | 35° 42.950' N | 106° 37.893' W |

| Feature Category | Label | Elevation (ft) | Latitude | Longitude |
|-----------------------|-------|----------------|---------------|----------------|
| Helispot | 30 | 8229 | 35° 45.937' N | 106° 35.069' W |
| Helispot | 60 | 8655 | 35° 47.671' N | 106° 35.604' W |
| Helispot | 70 | 8586 | 35° 50.261' N | 106° 29.625' W |
| Helispot | 71 | 8494 | 35° 51.465' N | 106° 29.197' W |
| Helispot | 87 | 5399 | 35° 38.559' N | 106° 19.235' W |
| Helispot | 90 | 5356 | 35° 37.828' N | 106° 19.935' W |
| Incident Command Post | | 6258 | 35° 46.567' N | 106° 41.306' W |
| Repeater | | 7275 | 35° 49.643' N | 106° 19.079' W |
| Repeater | | 8142 | 35° 48.945' N | 106° 41.452' W |
| Repeater | | 6303 | 35° 47.204' N | 106° 41.206' W |
| Repeater | CMD-1 | 10106 | 35° 47.658' N | 106° 32.557' W |
| Repeater | CMD-2 | 8127 | 35° 45.988' N | 106° 37.454' W |
| Repeater | CMD-3 | 9456 | 35° 45.442' N | 106° 22.248' W |
| Repeater | CMD-4 | 7807 | 35° 46.269' N | 106° 40.123' W |
| Repeater | CMD-5 | 10199 | 35° 52.165' N | 106° 24.771' W |

Great Basin Team 1
5/14/2022 0956
Acres from IR
North American 1983 Datum, Lat/Long Grid

UAS
NATIONAL FIRE SERVICE
NEW MEXICO FORESTRY DIVISION
NWSA
National Wildlife Study Agency

