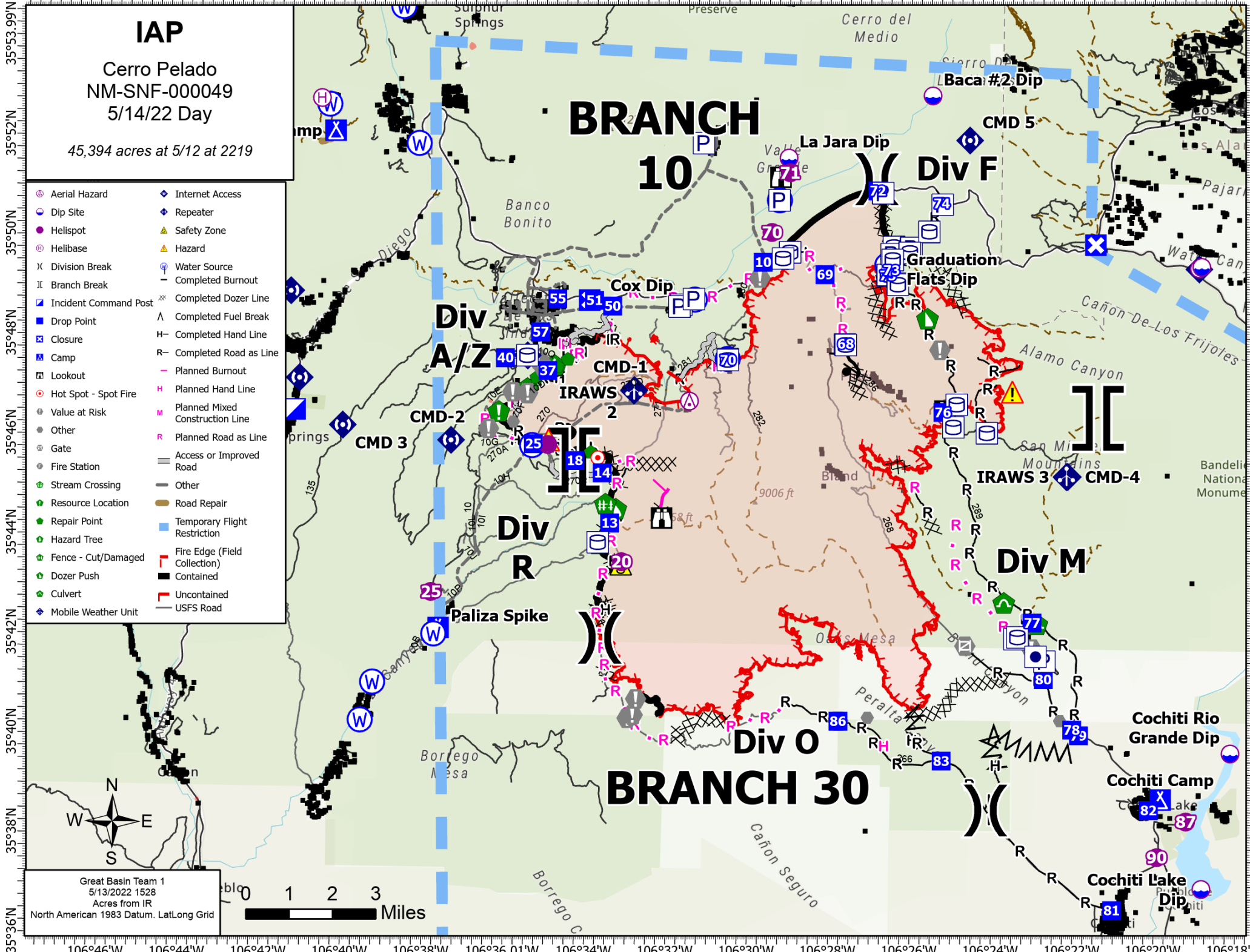


106°48'W 106°46'W 106°44'W 106°42'W 106°40'W 106°38'W 106°36.01'W 106°34'W 106°32'W 106°30'W 106°28'W 106°26'W 106°24'W 106°22'W 106°20'W



IAP
Cerro Pelado
NM-SNF-000049
5/14/22 Day
45,394 acres at 5/12 at 2219

- | | |
|-------------------------|-----------------------------------|
| ⊗ Aerial Hazard | ◆ Internet Access |
| ⊙ Dip Site | ◆ Repeater |
| ⊙ Hellsport | ▲ Safety Zone |
| ⊙ Helibase | ▲ Hazard |
| ⊗ Division Break | ⊙ Water Source |
| ⊗ Branch Break | — Completed Burnout |
| ⊗ Incident Command Post | ⊗ Completed Dozer Line |
| ⊗ Drop Point | ▲ Completed Fuel Break |
| ⊗ Closure | H— Completed Hand Line |
| ⊗ Camp | R— Completed Road as Line |
| ⊗ Lookout | — Planned Burnout |
| ⊙ Hot Spot - Spot Fire | H Planned Hand Line |
| ⊙ Value at Risk | M Planned Mixed Construction Line |
| ⊙ Other | R Planned Road as Line |
| ⊙ Gate | — Access or Improved Road |
| ⊙ Fire Station | — Other |
| ⊙ Stream Crossing | — Road Repair |
| ⊙ Resource Location | — Temporary Flight Restriction |
| ⊙ Repair Point | — Fire Edge (Field Collection) |
| ⊙ Hazard Tree | ■ Contained |
| ⊙ Fence - Cut/Damaged | ■ Uncontained |
| ⊙ Dozer Push | — USFS Road |
| ⊙ Culvert | |
| ⊙ Mobile Weather Unit | |

Great Basin Team 1
5/13/2022 1528
Acres from IR
North American 1983 Datum. LatLong Grid

1 2 3 Miles

35°53.99'N 35°52'N 35°50'N 35°48'N 35°46'N 35°44'N 35°42'N 35°40'N 35°38'N 35°36'N