

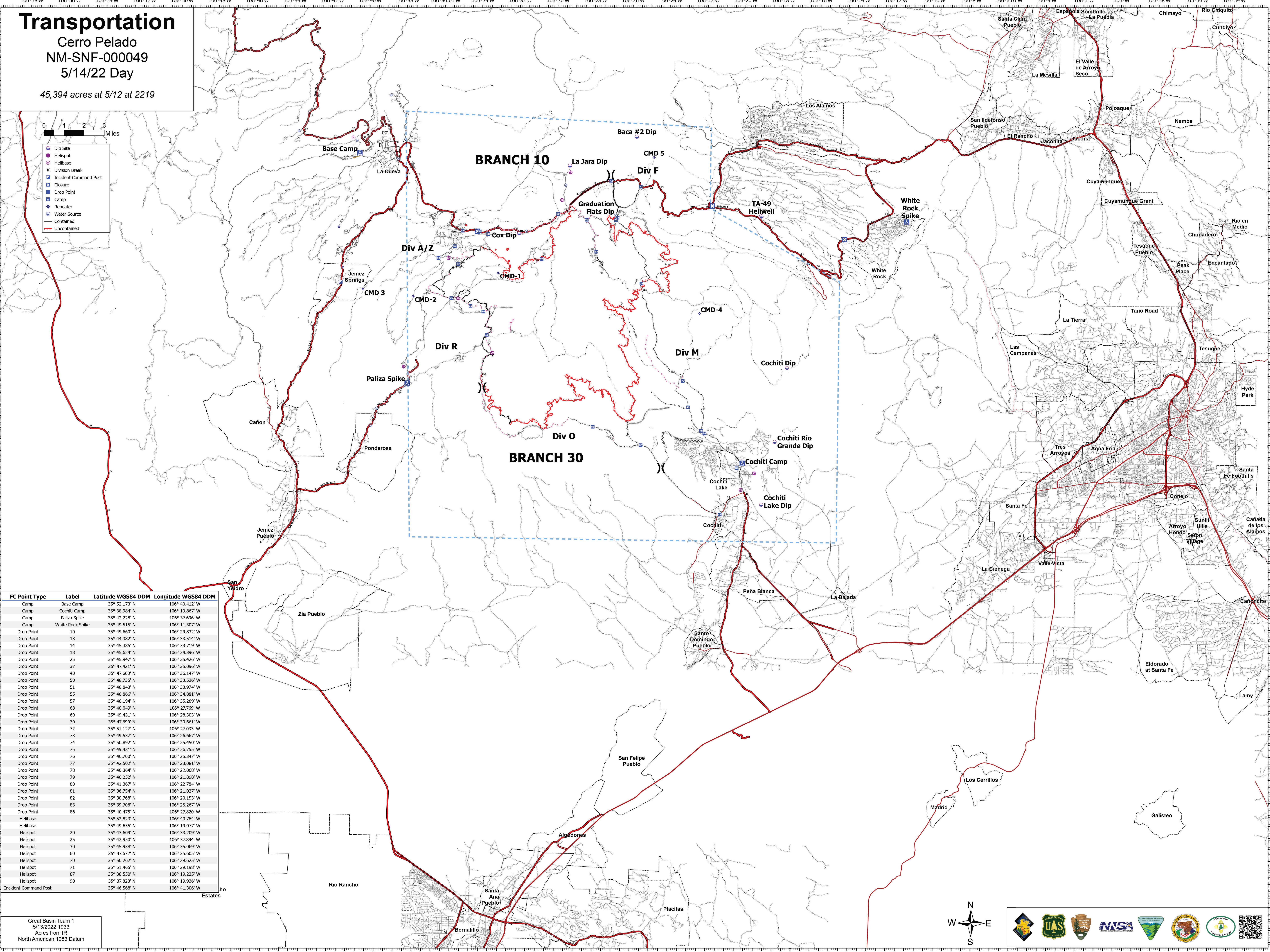
# Transportation

Cerro Pelado  
 NM-SNF-000049  
 5/14/22 Day

45,394 acres at 5/12 at 2219

0 1 2 3 Miles

- Dip Site
- Helibase
- Division Break
- Incident Command Post
- Closure
- Drop Point
- Camp
- Repeater
- Water Source
- Contained
- Uncontained



FC Point Type	Label	Latitude WGS84 DDM	Longitude WGS84 DDM
Camp	Base Camp	35° 52.173' N	106° 40.412' W
Camp	Cochiti Camp	35° 38.984' N	106° 19.867' W
Camp	Paliza Spike	35° 42.228' N	106° 37.696' W
Camp	White Rock Spike	35° 49.515' N	106° 11.307' W
Drop Point	10	35° 49.660' N	106° 29.832' W
Drop Point	13	35° 44.382' N	106° 33.514' W
Drop Point	14	35° 45.385' N	106° 33.719' W
Drop Point	18	35° 45.624' N	106° 34.396' W
Drop Point	25	35° 45.947' N	106° 35.426' W
Drop Point	37	35° 47.421' N	106° 35.096' W
Drop Point	40	35° 47.663' N	106° 36.147' W
Drop Point	50	35° 48.735' N	106° 33.526' W
Drop Point	51	35° 48.843' N	106° 33.974' W
Drop Point	55	35° 48.866' N	106° 34.881' W
Drop Point	57	35° 48.194' N	106° 35.289' W
Drop Point	68	35° 48.049' N	106° 27.769' W
Drop Point	69	35° 49.431' N	106° 28.303' W
Drop Point	70	35° 47.690' N	106° 30.661' W
Drop Point	72	35° 51.127' N	106° 27.033' W
Drop Point	73	35° 49.537' N	106° 26.667' W
Drop Point	74	35° 50.892' N	106° 25.450' W
Drop Point	75	35° 49.431' N	106° 26.755' W
Drop Point	76	35° 46.700' N	106° 25.347' W
Drop Point	77	35° 42.502' N	106° 23.081' W
Drop Point	78	35° 40.364' N	106° 22.068' W
Drop Point	79	35° 40.252' N	106° 21.898' W
Drop Point	80	35° 41.367' N	106° 22.784' W
Drop Point	81	35° 36.754' N	106° 21.027' W
Drop Point	82	35° 38.768' N	106° 20.153' W
Drop Point	83	35° 39.706' N	106° 25.267' W
Drop Point	86	35° 40.475' N	106° 27.820' W
Helibase		35° 52.823' N	106° 40.764' W
Helibase		35° 49.655' N	106° 19.077' W
Helispot	20	35° 43.609' N	106° 33.209' W
Helispot	25	35° 42.950' N	106° 37.894' W
Helispot	30	35° 45.938' N	106° 35.069' W
Helispot	60	35° 47.672' N	106° 35.605' W
Helispot	70	35° 50.262' N	106° 29.625' W
Helispot	71	35° 51.465' N	106° 29.198' W
Helispot	87	35° 38.559' N	106° 19.235' W
Helispot	90	35° 37.828' N	106° 19.936' W
Incident Command Post		35° 46.568' N	106° 41.306' W

Great Basin Team 1  
 5/13/2022 1933  
 Acres from IR  
 North American 1983 Datum

