

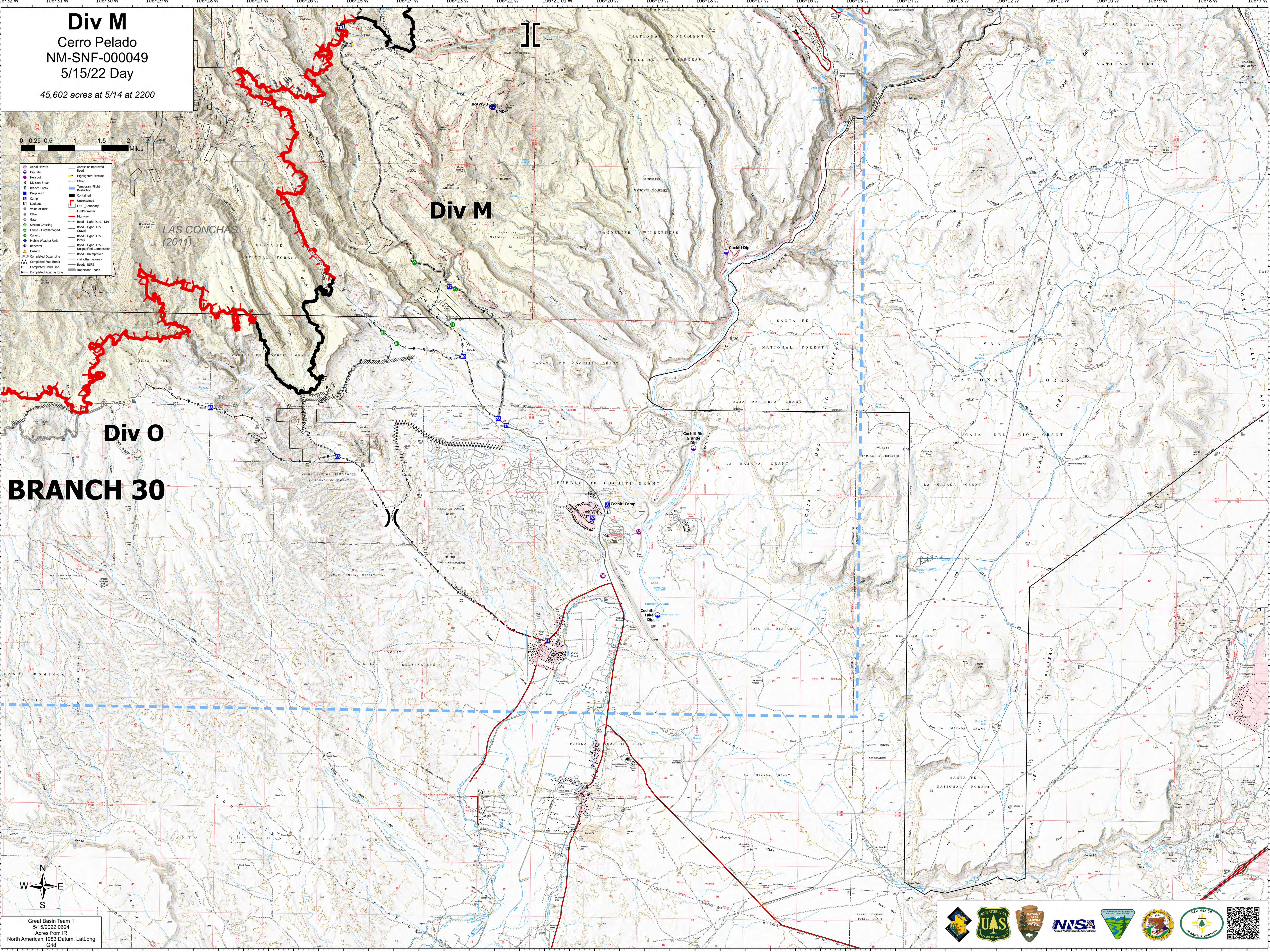
Div M

Cerro Pelado
NM-SNF-000049
5/15/22 Day

45,602 acres at 5/14 at 2200



- Aerial Hazard
- Dip Site
- Wellcut
- Division Break
- Branch Break
- Drop Point
- Camp
- Lookout
- Value at Risk
- Other
- Gate
- Stream Crossing
- Vehicle-Cut/Damaged
- Culvert
- Mobile Weather Unit
- Receiver
- Hazard
- Completed Dozer Line
- Completed Fuel Break
- Completed Hand Line
- Completed Road as Line
- Access or Improved Road
- Highlighted Feature
- Other
- Temporary Flight Restriction
- Contained
- Uncontaminated
- LANL_Boundary
- FirePerimeter
- Highway
- Road - Light Duty - Dirt
- Road - Light Duty - Gravel
- Road - Light Duty - Paved
- Road - Light Duty - Unspecified Composition
- Road - Unimproved
- All Other values
- Roads, USFS
- Important Roads



Div O BRANCH 30



Great Basin Team 1
5/15/2022 0624
Acres from IR
North American 1983 Datum, Lat/Long
Grid

