

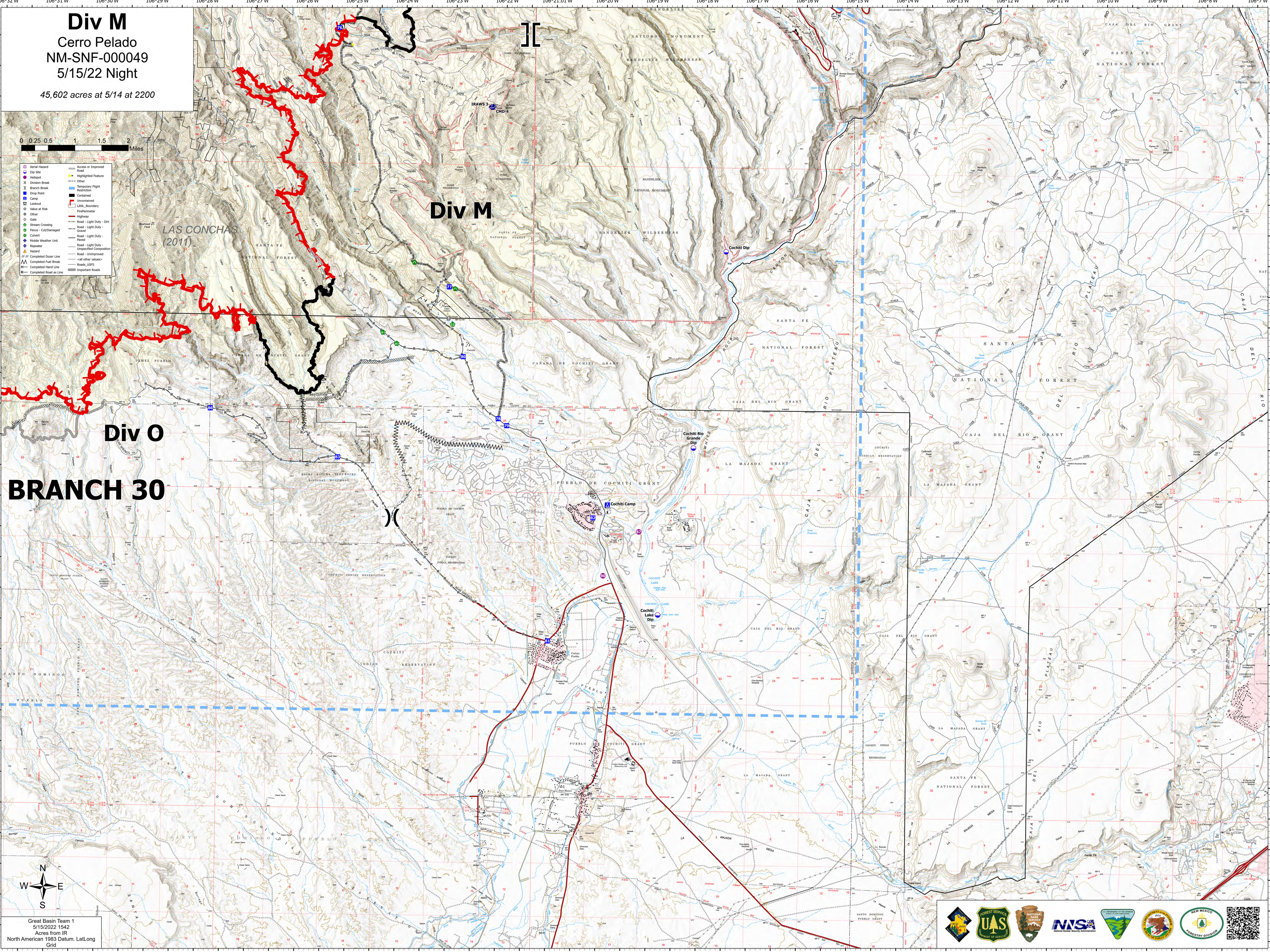
# Div M

Cerro Pelado  
NM-SNF-000049  
5/15/22 Night

45,602 acres at 5/14 at 2200



- Aerial Hazard
- Dip Site
- Hitpoint
- Division Break
- Branch Break
- Drop Point
- Camp
- Lookout
- Value at Risk
- Other
- Gate
- Stream Crossing
- Vehicle-Cut/Damaged
- Culvert
- Mobile Weather Unit
- Repeater
- Hazard
- Completed Dozer Line
- Completed Fuel Break
- Completed Hand Line
- Completed Hand Line
- Completed Hand Line
- Access or Improved Road
- Highlighted Feature
- Other
- Temporary Flight Restriction
- Contained
- Uncontaminated
- LANL\_Boundary
- Highway
- Road - Light Duty - Dirt
- Road - Light Duty - Gravel
- Road - Light Duty - Paved
- Road - Light Duty - Unspecified Composition
- Road - Unimproved
- All Other Values
- Roads, USFS
- Important Roads



## Div O BRANCH 30



Great Basin Team 1  
5/15/2022 1542  
Acres from IR  
North American 1983 Datum, Lat,Long  
Grid

