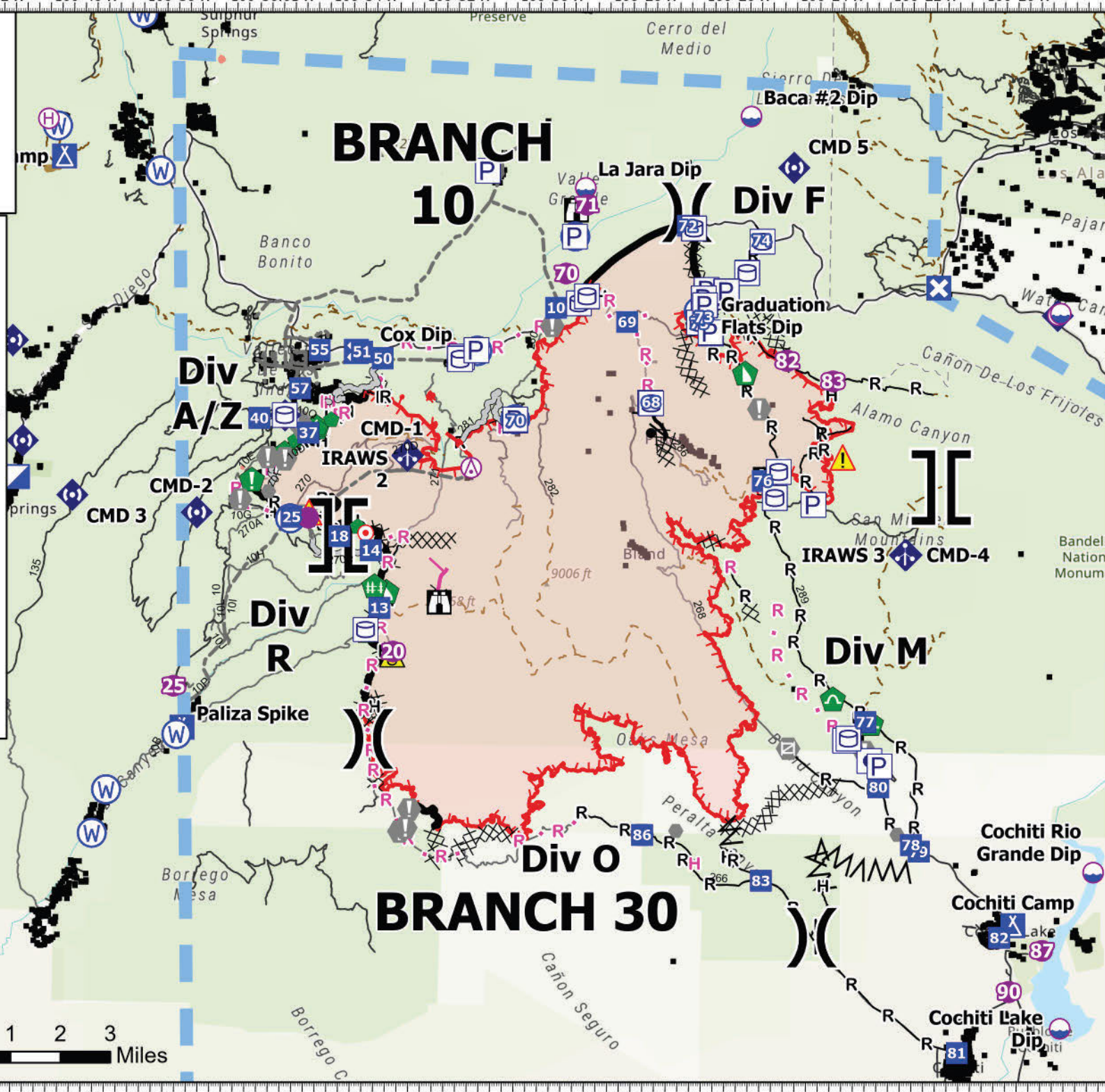


IAP

Cerro Pelado
NM-SNF-000049
5/15/22 Day

45,591 acres at 5/13 at 2228

- | | |
|-------------------------|-----------------------------------|
| ⊗ Aerial Hazard | ◆ Internet Access |
| ⊗ Dip Site | ◆ Repeater |
| ⊗ Hellspot | ▲ Safety Zone |
| ⊗ Hellbase | ▲ Hazard |
| ⊗ Division Break | ⊗ Water Source |
| ⊗ Branch Break | — Completed Burnout |
| ⊗ Incident Command Post | ⊗ Completed Dozer Line |
| ⊗ Drop Point | ▲ Completed Fuel Break |
| ⊗ Closure | — Completed Hand Line |
| ⊗ Camp | — Completed Road as Line |
| ⊗ Lookout | — Planned Burnout |
| ⊗ Hot Spot - Spot Fire | — Planned Hand Line |
| ⊗ Value at Risk | — Planned Mixed Construction Line |
| ⊗ Other | — Planned Road as Line |
| ⊗ Gate | — Access or Improved Road |
| ⊗ Fire Station | — Other |
| ⊗ Stream Crossing | ● Highlighted Feature |
| ⊗ Resource Location | — Road Repair |
| ⊗ Repair Point | — Temporary Flight Restriction |
| ⊗ Hazard Tree | — Fire Edge (Field Collection) |
| ⊗ Fence - Cut/Damaged | ■ Contained |
| ⊗ Dozer Push | — Uncontained |
| ⊗ Culvert | — USFS Road |
| ⊗ Mobile Weather Unit | |



Great Basin Team 1
5/14/2022 1501
Acres from IR
North American 1983 Datum, LatLong Grid

