

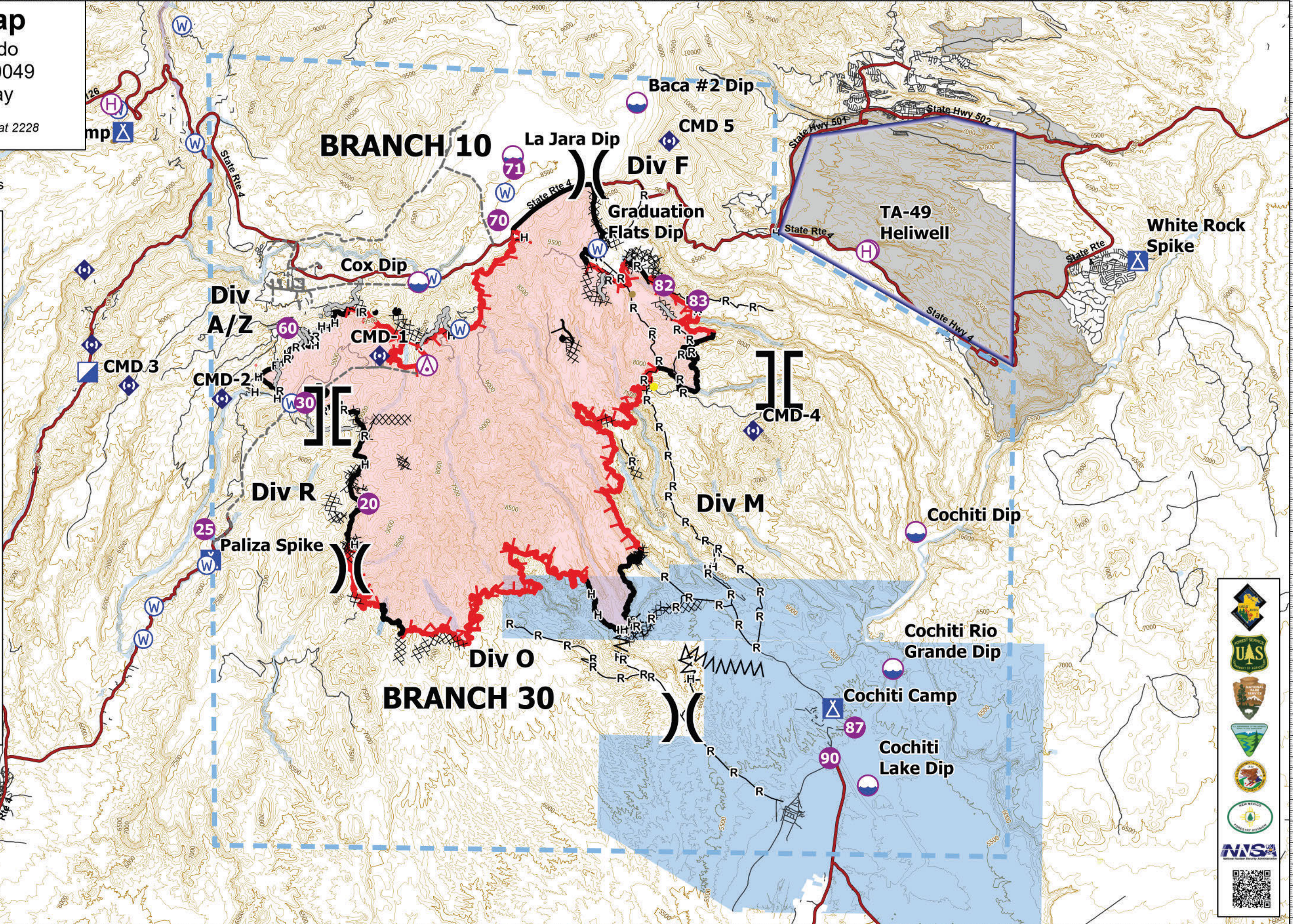
# Pilot Map

Cerro Pelado  
NM-SNF-000049  
5/15/22 Day

45,591 acres at 5/13 at 2228



- Aerial Hazard
- Helibase
- Dip Site
- Helispot
- Division Break
- Branch Break
- Incident Command Post
- Camp
- Repeater
- Water Source
- Wildfire Daily Fire Perimeter
- Completed Burnout
- Completed Dozer Line
- Completed Fuel Break
- Completed Hand Line
- Completed Road as Line
- Access or Improved Road
- Highlighted Feature
- Other
- Repair Line
- Road Repair
- Temporary Flight Restriction
- Fire Edge (Field Collection)
- Contained
- Uncontained
- County Roads
- Retardant Avoidance
- LANL Boundary
- PFR R-5101



Great Basin Team 1  
5/14/2022 2047  
Acres from IR  
North American 1983 Datum.



FeatureCategory	Label	Elevation (ft)	Latitude	Longitude
Aerial Hazard		9859	35° 46.853' N	106° 31.597' W
Camp	Base Camp	8272	35° 52.172' N	106° 40.412' W
Camp	Cochiti Camp	5541	35° 38.983' N	106° 19.866' W
Camp	Paliza Spike	6760	35° 42.228' N	106° 37.695' W
Camp	White Rock Spike	6305	35° 49.515' N	106° 11.306' W
Dip Site	Baca #2 Dip	8600	35° 53.049' N	106° 25.704' W
Dip Site	Cochiti Dip	5395	35° 43.132' N	106° 17.561' W
Dip Site	Cochiti Lake Dip	5344	35° 37.202' N	106° 18.835' W
Dip Site	Cochiti Rio Grande Dip	5347	35° 39.927' N	106° 18.164' W
Dip Site	Cox Dip	8403	35° 48.788' N	106° 31.879' W
Dip Site	La Jara Dip	8507	35° 51.759' N	106° 29.233' W
Dip Site	TA-49 Heliwell	7276	35° 49.684' N	106° 19.017' W
Helibase		8680	35° 52.822' N	106° 40.764' W
Helibase		7278	35° 49.655' N	106° 19.077' W
Helispot	20	8299	35° 43.609' N	106° 33.209' W
Helispot	25	7178	35° 42.950' N	106° 37.893' W
Helispot	30	8229	35° 45.937' N	106° 35.069' W
Helispot	60	8655	35° 47.671' N	106° 35.604' W
Helispot	70	8586	35° 50.261' N	106° 29.625' W
Helispot	71	8494	35° 51.465' N	106° 29.197' W
Helispot	82	8625	35° 48.799' N	106° 24.861' W
Helispot	83	8412	35° 48.455' N	106° 23.874' W
Helispot	87	5399	35° 38.550' N	106° 19.235' W
Helispot	90	5356	35° 37.828' N	106° 19.935' W
Incident Command Post		6258	35° 46.567' N	106° 41.306' W
Repeater		7275	35° 49.643' N	106° 19.079' W
Repeater		8142	35° 48.945' N	106° 41.452' W
Repeater		6303	35° 47.204' N	106° 41.206' W
Repeater	CMD-1	10106	35° 47.058' N	106° 32.957' W
Repeater	CMD-2	8127	35° 45.998' N	106° 37.454' W
Repeater	CMD-4	8456	35° 45.442' N	106° 22.248' W
Repeater	CMD 3	7807	35° 46.269' N	106° 40.123' W
Repeater	CMD 5	10199	35° 52.165' N	106° 24.771' W