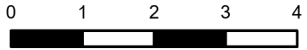


# IAP

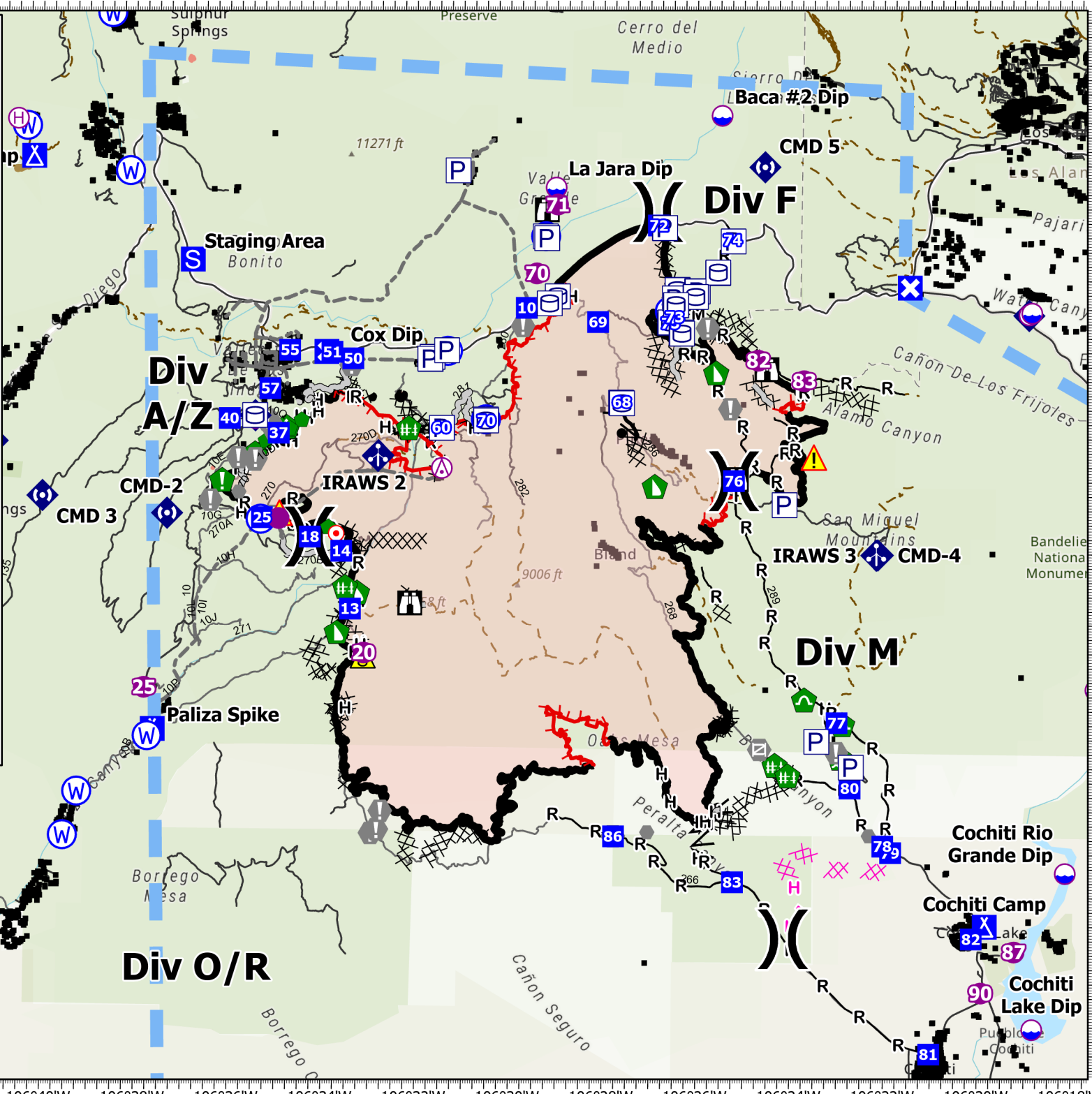
Cerro Pelado  
NM-SNF-000049  
5/21/22 Day

45,605 acres at 5/18 at 2058



- |                         |                                     |
|-------------------------|-------------------------------------|
| ⊗ Aerial Hazard         | ◆ Internet Access                   |
| ⊙ Dip Site              | ◆ Repeater                          |
| ⊙ Helispot              | ▲ Safety Zone                       |
| ⊙ Helibase              | ▲ Hazard                            |
| ⊗ Division Break        | ⊙ Water Source                      |
| ⊙ Incident Command Post | — Completed Burnout                 |
| ■ Drop Point            | ⊗ Completed Dozer Line              |
| ⊗ Closure               | ⊙ Completed Fuel Break              |
| ⊙ Camp                  | ⊙ Completed Hand Line               |
| ⊙ Staging Area          | ⊙ Completed Mixed Construction Line |
| ⊙ Lookout               | ⊙ Completed Road as Line            |
| ⊙ Hot Spot - Spot Fire  | — Planned Dozer Line                |
| ⊙ Value at Risk         | ⊙ Planned Hand Line                 |
| ⊙ Other                 | — Access or Improved Road           |
| ⊙ Gate                  | ● Highlighted Feature               |
| ⊙ Fire Station          | — Other                             |
| ⊙ Structure Wrap        | — Repair Line                       |
| ⊙ Stream Crossing       | — Road Repair                       |
| ⊙ Resource Location     | — Temporary Flight Restriction      |
| ⊙ Repair Point          | — Fire Edge (Field Collection)      |
| ⊙ Hazard Tree           | — Contained                         |
| ⊙ Fence - Cut/Damaged   | — Uncontained                       |
| ⊙ Dozer Push            | — Wildfire Daily Fire Perimeter     |
| ⊙ Culvert               |                                     |
| ⊙ Mobile Weather Unit   |                                     |

Rocky Mountain Team 3  
5/20/2022 1915  
Acres from IR  
North American 1983 Datum, Lat/Long Grid



35°54'N  
35°52'N  
35°50'N  
35°48'N  
35°46'N  
35°44'N  
35°42'N  
35°40'N  
35°38'N  
35°36'N

106°46'W 106°44'W 106°42'W 106°40'W 106°38'W 106°36'W 106°34'W 106°32'W 106°30'W 106°28'W 106°26'W 106°24'W 106°22'W 106°20'W 106°18'W

35°54'N  
35°52'N  
35°50'N  
35°48'N  
35°46'N  
35°44'N  
35°42'N  
35°40'N  
35°38'N  
35°36'N