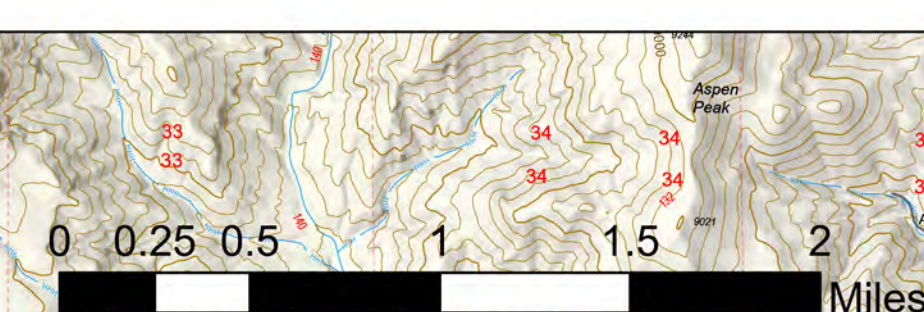


Div M
 Cerro Pelado
 NM-SNF-000049
 5/22/22 Day
 45,605 acres at 5/21 at 2158



- | | |
|------------------------|---|
| ○ Aerial Hazard | — Completed Road as Line |
| ○ Dip Site | — Access or Improved Road |
| ○ Hilltop | — Highlighted Feature |
| — Division Break | — Contour |
| ○ Drop Point | — Temporary Flight Restriction |
| — Camp | — Road - Light Duty - Gravel |
| — Lookout | — Road - Light Duty - Pavement |
| ○ Value at Risk | — Road - Light Duty - Unspecified Composition |
| ○ Other | — Road - Unimproved |
| ○ LANTL_Boundary | — call other values |
| — Other | — Roads, LIPS |
| ○ Stream Crossing | — Important Roads |
| ○ Fence - Cut/Damaged | |
| ○ Closure Point | |
| ○ Culvert | |
| ○ Mobile Weather Unit | |
| ○ Rappeter | |
| ○ Hazard | |
| — Completed Dozer Line | |
| — Completed Fuel Break | |
| — Completed Hand Line | |
| — Completed Holes | |
| — Construction Line | |

LAS CONCHAS
(2011)

Div M



Rocky Mountain Team 3
 5/22/2022 0715
 Acres from IR
 North American 1983 Datum, Lat,Long
 Grid



106°32'W 106°31'W 106°30'W 106°29'W 106°28'W 106°27'W 106°26'W 106°25'W 106°24'W 106°23'W 106°22'W 106°21.01'W 106°20'W 106°19'W 106°18'W 106°17'W 106°16'W 106°15'W 106°14'W 106°13'W 106°12'W 106°11'W 106°10'W 106°9'W 106°8'W 106°7'W

