

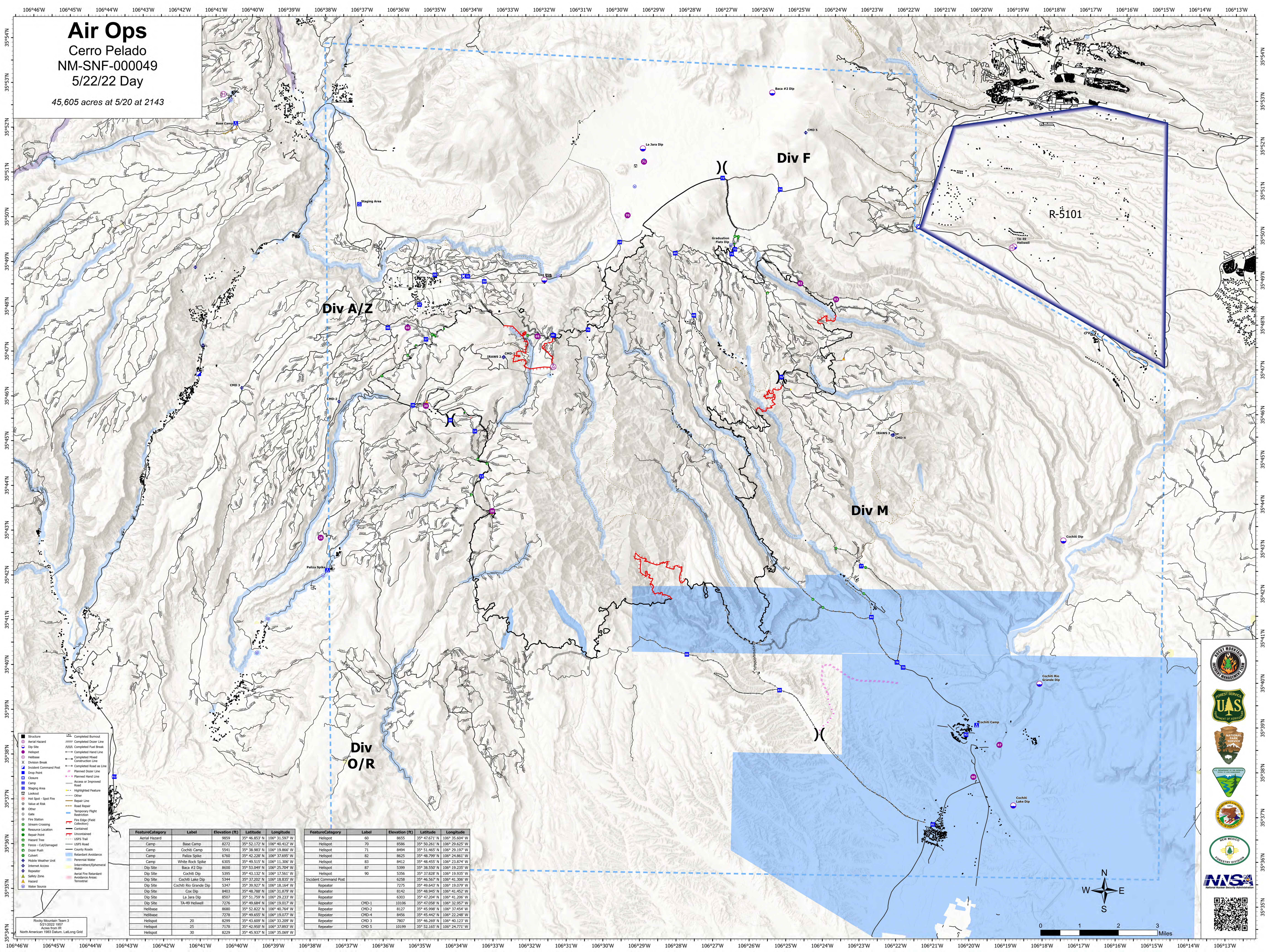
# Air Ops

## Cerro Pelado

### NM-SNF-000049

#### 5/22/22 Day

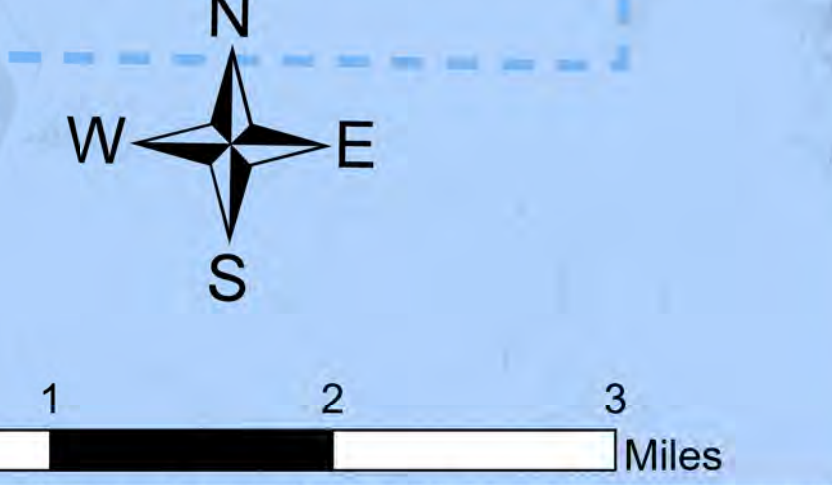
45,605 acres at 5/20 at 2143



FeatureCategory	Label	Elevation (ft)	Latitude	Longitude
Aerial Hazard	Base Camp	8272	35° 46.833' N	106° 31.297' W
Camp	Cochiti Camp	5541	35° 38.983' N	106° 19.866' W
Camp	White Rock Spike	6305	35° 49.515' N	106° 11.306' W
Dip Site	Baca #2 Dip	8500	35° 53.049' N	106° 25.704' W
Dip Site	Cochiti Dip	5305	35° 43.132' N	106° 17.261' W
Dip Site	Cochiti Lake Dip	5344	35° 37.202' N	106° 18.835' W
Dip Site	Cochiti Rio Grande Dip	5347	35° 39.927' N	106° 18.164' W
Dip Site	Cox Dip	8403	35° 48.788' N	106° 31.879' W
Dip Site	La Jara Dip	8507	35° 51.759' N	106° 29.233' W
Dip Site	TA-49 Helispot	7276	35° 49.684' N	106° 19.017' W
Helibase		8680	35° 52.822' N	106° 40.764' W
Helibase		7278	35° 49.655' N	106° 19.077' W
Helispot	20	8299	35° 43.609' N	106° 33.209' W
Helispot	25	7178	35° 42.950' N	106° 37.893' W
Helispot	30	8229	35° 45.937' N	106° 35.069' W

FeatureCategory	Label	Elevation (ft)	Latitude	Longitude
Helispot	60	8655	35° 47.671' N	106° 35.604' W
Helispot	70	8586	35° 50.261' N	106° 29.625' W
Helispot	71	8494	35° 51.465' N	106° 29.197' W
Helispot	82	8625	35° 48.799' N	106° 24.861' W
Helispot	83	8412	35° 48.455' N	106° 23.874' W
Helispot	87	5399	35° 36.559' N	106° 19.235' W
Helispot	90	5356	35° 37.826' N	106° 18.932' W
Incident Command Post		6258	35° 46.567' N	106° 41.306' W
Repeater		7275	35° 49.643' N	106° 19.079' W
Repeater		8142	35° 48.945' N	106° 41.452' W
Repeater		6303	35° 47.204' N	106° 41.206' W
Repeater	CMD-1	10106	35° 47.058' N	106° 32.957' W
Repeater	CMD-2	8127	35° 45.988' N	106° 37.454' W
Repeater	CMD-3	8456	35° 45.442' N	106° 22.248' W
Repeater	CMD-4	7807	35° 46.269' N	106° 40.123' W
Repeater	CMD 5	10199	35° 52.165' N	106° 24.771' W



Rocky Mountain Team 3  
5/21/2022 1607  
North American 1983 Datum, LatLong Grid