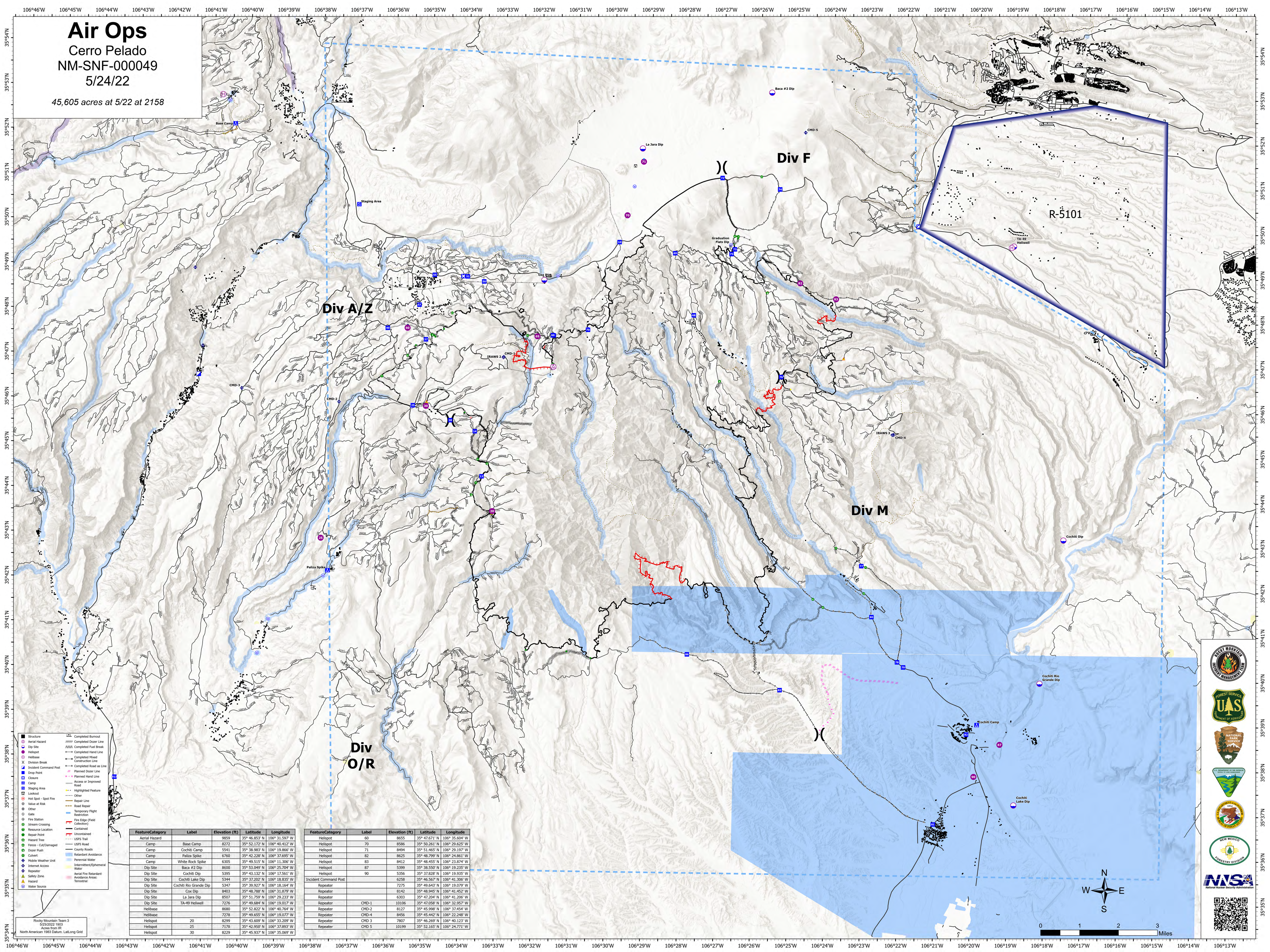


Air Ops

Cerro Pelado
NM-SNF-000049

5/24/22

45,605 acres at 5/22 at 2158



- Structure
- Aerial Hazard
- Dip Site
- Helispot
- Helibase
- Division Break
- Incident Command Post
- Drop Point
- Closure
- Camp
- Staging Area
- Lookout
- Hot Spot - Spot Fire
- Value at Risk
- Gate
- Fire Station
- Stream Crossing
- Resource Location
- Contained
- Repair Point
- Hazard Tree
- Hazard - Call Damaged
- Dozer Push
- Culvert
- Mobile Weather Unit
- Internet Weather
- Repeater
- Safety Zone
- Hazard
- Water Source
- Completed Burnout
- Completed Dozer Line
- Completed Fuel Break
- Completed Hand Line
- Completed Mixed Construction Line
- Completed Road as Line
- Planned Dozer Line
- Planned Hand Line
- Access or Improved Road
- Highlighted Feature
- Other
- Repair Line
- Road Repair
- Temporary Flight Restriction
- Fire Edge (Field Collection)
- USFS Trail
- USFS Road
- County Roads
- Retardant Avoidance
- Perennial Water
- Intermittent/Ephemeral Water
- Aerial Fire Retardant Avoidance Area: Terrestrial

FeatureCategory	Label	Elevation (ft)	Latitude	Longitude	
Aerial Hazard		9529	35° 46.833' N	106° 31.297' W	
Camp	Base Camp	8272	35° 52.122' N	106° 40.412' W	
Camp	Cochiti Camp	5541	35° 38.983' N	106° 19.866' W	
Camp	Paliza Spike	6760	35° 42.228' N	106° 37.695' W	
Camp	White Rock Spike	6305	35° 49.515' N	106° 11.306' W	
Dip Site	Baca #2 Dip	8500	35° 53.049' N	106° 25.704' W	
Dip Site	Cochiti Dip	5395	35° 43.132' N	106° 17.261' W	
Dip Site	Cochiti Lake Dip	5344	35° 37.202' N	106° 18.835' W	
Dip Site	Cochiti Rio Grande Dip	5347	35° 39.927' N	106° 18.164' W	
Dip Site	Cox Dip	8403	35° 48.788' N	106° 31.879' W	
Dip Site	La Jara Dip	8507	35° 51.759' N	106° 29.233' W	
Dip Site	TA-49 Helispot	7276	35° 49.684' N	106° 19.017' W	
Helibase		8680	35° 52.822' N	106° 40.764' W	
Helibase		7278	35° 49.655' N	106° 19.077' W	
Helispot		8299	35° 43.609' N	106° 33.209' W	
Helispot		25	7178	35° 42.950' N	106° 37.893' W
Helispot		8229	35° 45.937' N	106° 35.069' W	

FeatureCategory	Label	Elevation (ft)	Latitude	Longitude	
Helispot		60	8655	35° 47.671' N	106° 35.604' W
Helispot		70	8586	35° 50.261' N	106° 29.625' W
Helispot		71	8494	35° 51.465' N	106° 29.197' W
Helispot		82	8625	35° 48.799' N	106° 24.861' W
Helispot		83	8412	35° 48.455' N	106° 23.874' W
Helispot		87	5399	35° 38.559' N	106° 19.235' W
Helispot		90	5356	35° 37.826' N	106° 19.935' W
Incident Command Post		6258	35° 46.567' N	106° 41.306' W	
Repeater		7275	35° 49.643' N	106° 19.079' W	
Repeater		8142	35° 48.945' N	106° 41.452' W	
Repeater		6303	35° 47.204' N	106° 41.206' W	
Repeater	CMD-1	10106	35° 47.058' N	106° 32.957' W	
Repeater	CMD-2	8127	35° 45.988' N	106° 37.454' W	
Repeater	CMD-3	8456	35° 45.442' N	106° 22.248' W	
Repeater	CMD-4	7807	35° 46.269' N	106° 40.123' W	
Repeater	CMD 5	10199	35° 52.165' N	106° 24.771' W	

Rocky Mountain Team 3
5/23/2022 1903
North American 1983 Datum, LatLong Grid

