

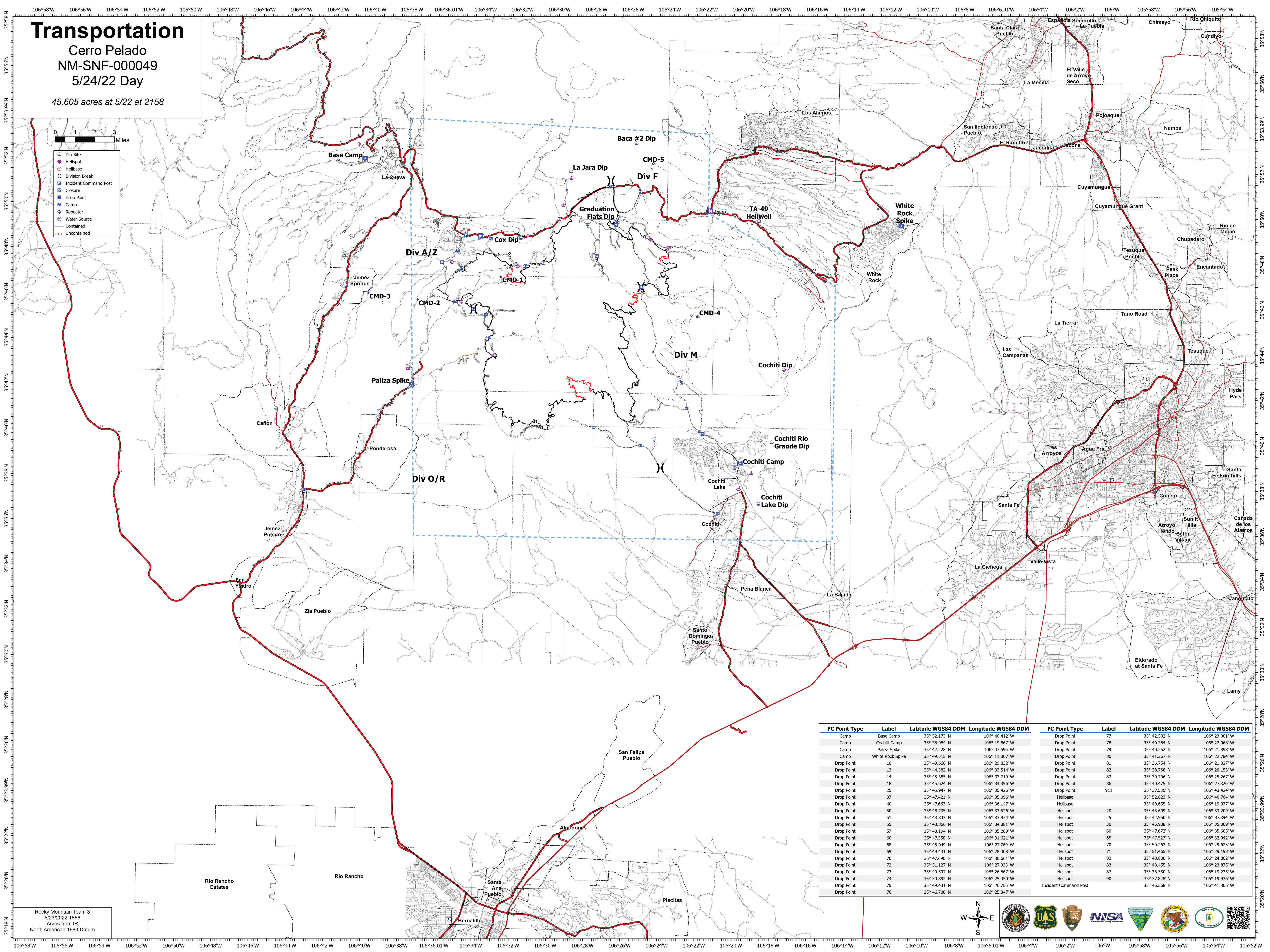
Transportation

Cerro Pelado
 NM-SNF-000049
 5/24/22 Day

45,605 acres at 5/22 at 2158

0 1 2 3 Miles

- Dip Site
- Helibase
- Division Break
- Incident Command Post
- Closure
- Drop Point
- Camp
- Repeater
- Water Source
- Contained
- Uncontained



| FC Point Type | Label | Latitude WGS84 DDM | Longitude WGS84 DDM | FC Point Type | Label | Latitude WGS84 DDM | Longitude WGS84 DDM |
|---------------|------------------|--------------------|---------------------|-----------------------|-------|--------------------|---------------------|
| Camp | Base Camp | 35° 52.173' N | 106° 40.412' W | Drop Point | 77 | 35° 42.502' N | 106° 23.081' W |
| Camp | Cochiti Camp | 35° 38.984' N | 106° 19.867' W | Drop Point | 78 | 35° 40.364' N | 106° 22.068' W |
| Camp | Paliza Spike | 35° 42.228' N | 106° 37.696' W | Drop Point | 79 | 35° 40.252' N | 106° 21.898' W |
| Camp | White Rock Spike | 35° 49.515' N | 106° 11.307' W | Drop Point | 80 | 35° 41.367' N | 106° 22.784' W |
| Drop Point | 10 | 35° 49.660' N | 106° 29.832' W | Drop Point | 81 | 35° 36.754' N | 106° 21.027' W |
| Drop Point | 13 | 35° 44.382' N | 106° 33.514' W | Drop Point | 82 | 35° 38.768' N | 106° 20.153' W |
| Drop Point | 14 | 35° 45.385' N | 106° 33.719' W | Drop Point | 83 | 35° 39.706' N | 106° 25.267' W |
| Drop Point | 18 | 35° 45.624' N | 106° 34.396' W | Drop Point | 86 | 35° 40.475' N | 106° 27.820' W |
| Drop Point | 25 | 35° 45.947' N | 106° 35.426' W | Drop Point | 911 | 35° 37.536' N | 106° 43.424' W |
| Drop Point | 37 | 35° 47.421' N | 106° 35.096' W | Helibase | | 35° 52.823' N | 106° 40.764' W |
| Drop Point | 40 | 35° 47.663' N | 106° 36.147' W | Helibase | | 35° 49.655' N | 106° 19.077' W |
| Drop Point | 50 | 35° 48.735' N | 106° 33.526' W | Helibase | 20 | 35° 43.609' N | 106° 33.209' W |
| Drop Point | 51 | 35° 48.943' N | 106° 33.974' W | Helibase | 25 | 35° 42.959' N | 106° 37.894' W |
| Drop Point | 55 | 35° 48.866' N | 106° 34.881' W | Helibase | 30 | 35° 45.938' N | 106° 35.069' W |
| Drop Point | 57 | 35° 48.194' N | 106° 35.289' W | Helibase | 60 | 35° 47.672' N | 106° 35.605' W |
| Drop Point | 60 | 35° 47.558' N | 106° 31.621' W | Helibase | 65 | 35° 47.527' N | 106° 32.042' W |
| Drop Point | 68 | 35° 48.049' N | 106° 27.769' W | Helibase | 70 | 35° 50.262' N | 106° 29.625' W |
| Drop Point | 69 | 35° 49.431' N | 106° 28.303' W | Helibase | 71 | 35° 51.465' N | 106° 29.198' W |
| Drop Point | 70 | 35° 47.690' N | 106° 30.661' W | Helibase | 82 | 35° 48.800' N | 106° 24.862' W |
| Drop Point | 72 | 35° 51.127' N | 106° 27.033' W | Helibase | 83 | 35° 48.455' N | 106° 23.875' W |
| Drop Point | 73 | 35° 49.537' N | 106° 26.667' W | Helibase | 87 | 35° 38.550' N | 106° 19.235' W |
| Drop Point | 74 | 35° 50.892' N | 106° 25.450' W | Helibase | 90 | 35° 37.828' N | 106° 19.936' W |
| Drop Point | 75 | 35° 49.431' N | 106° 26.755' W | Incident Command Post | | 35° 46.568' N | 106° 41.306' W |
| Drop Point | 76 | 35° 46.700' N | 106° 25.347' W | | | | |

Rocky Mountain Team 3
 5/23/2022 1856
 Acres from IR
 North American 1983 Datum

