

Div A/Z

Cerro Pelado
NM-SNF-000049

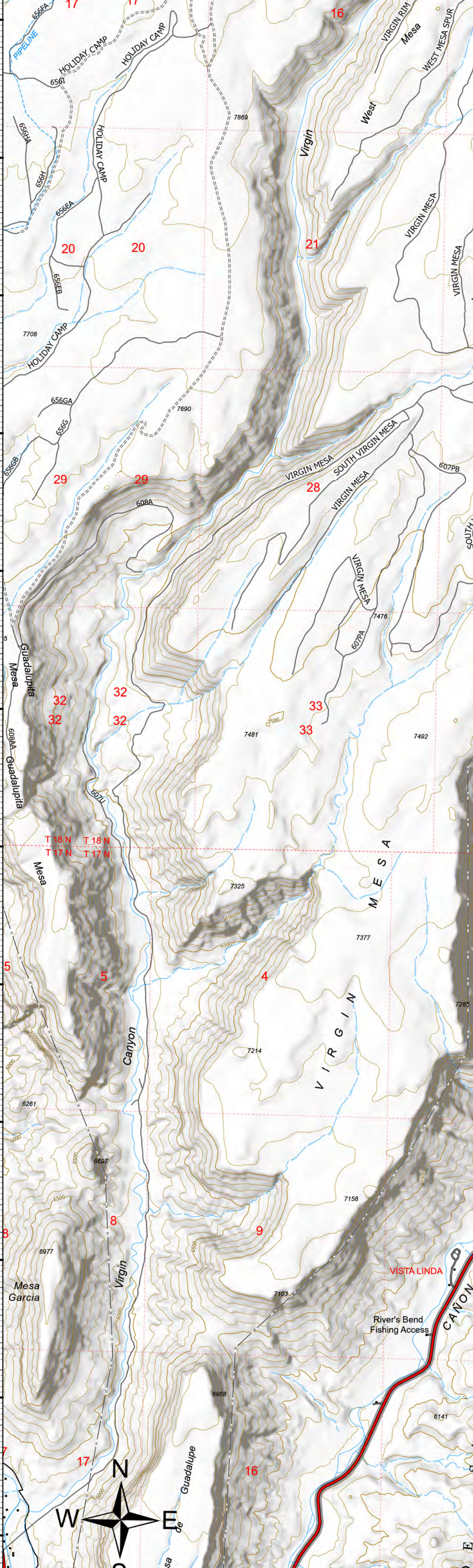
5/25/22 Day

45,605 acres at 5/22 at 2158

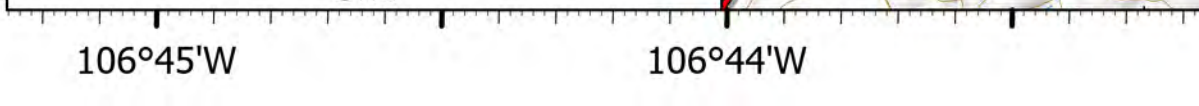


- Aerial Hazard
- Stop Sign
- Water Tower
- Division Break
- Incident Command Post
- Drop Zone
- Hot Spot - Spot Fire
- Value at Risk
- Other
- Gate
- Fire Station
- Resource Location
- Reserve Area
- Hazard Tree
- Fence - Cut/Damaged
- Dozer Path
- Culvert
- Internet Access
- Rapraiser
- Safe Zone
- Hazard
- Water Source
- Completed Dozer Line
- Completed Hand Line
- Completed Hand Construction Line
- Completed Road as Line
- Access or Improved Road
- Other
- Road Repair
- Temporary Flight Restriction
- Fire Edge (Field Collection)
- Contaminated
- Uncontaminated
- Firehosemeter
- Highway
- Road - Light Duty - Dirt
- Road - Light Duty
- Road - Light Duty - Paved
- Road - Light Duty Unimproved Composition
- Road - Unimproved
- call other values
- Roads, USFS
- Important Roads

STA (20)



Rocky Mountain Team 3
5/24/2022 2009
Acres from IR
North American 1983 Datum, Lat/Long Grid



Div A/Z

