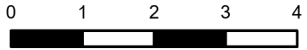


IAP

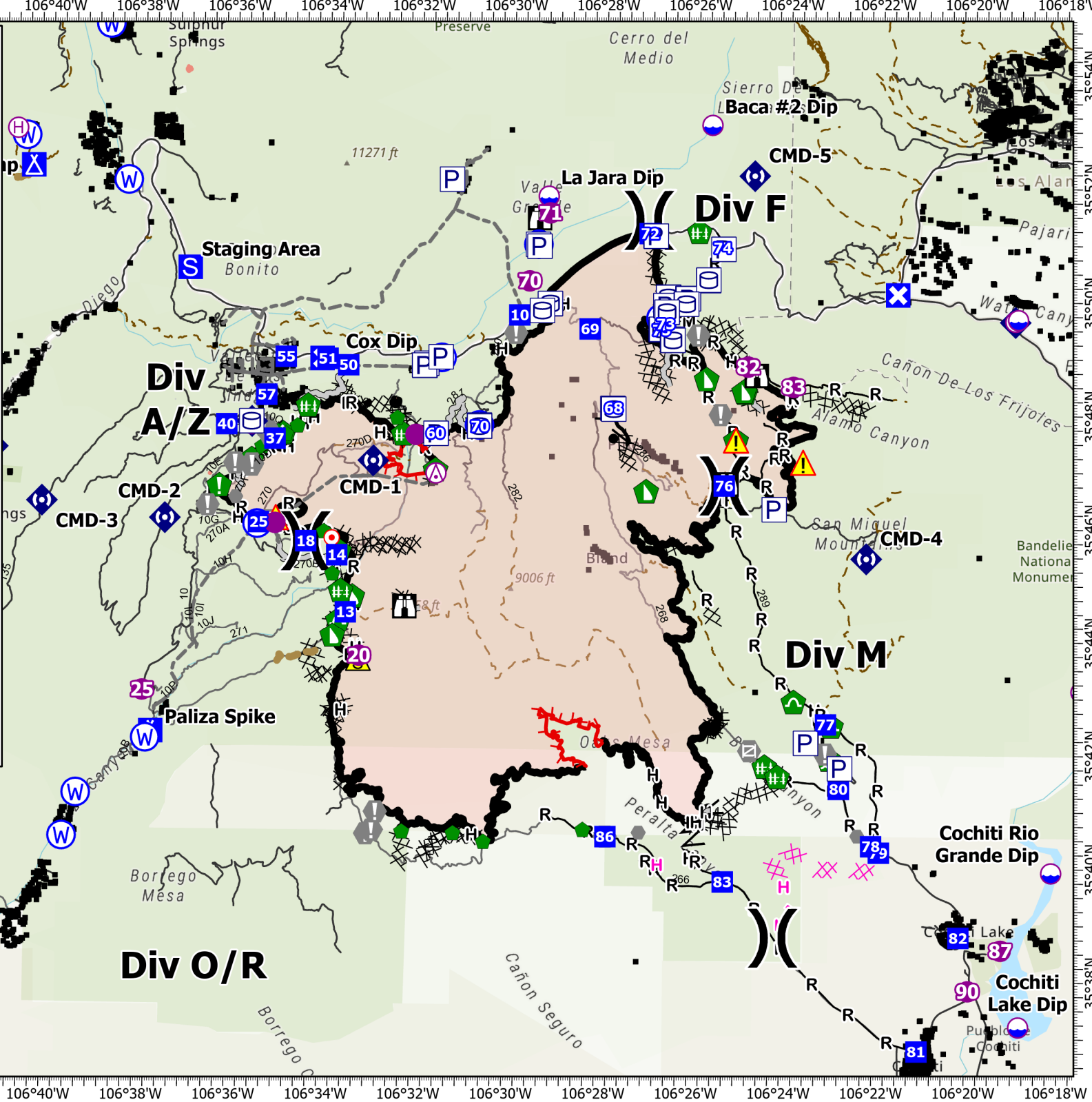
Cerro Pelado
NM-SNF-000049
5/26/22

45,605 acres at 5/22 at 2158



- | | |
|-------------------------|-------------------------------------|
| ⊗ Aerial Hazard | ◆ Internet Access |
| ⊙ Dip Site | ◆ Repeater |
| ● Helispot | ▲ Safety Zone |
| ⊙ Helibase | ▲ Hazard |
| ⊗ Division Break | ⊙ Water Source |
| ■ Incident Command Post | — Completed Burnout |
| ■ Drop Point | ⊗ Completed Dozer Line |
| ⊗ Closure | △ Completed Fuel Break |
| ⊙ Camp | — Completed Hand Line |
| ■ Staging Area | — Completed Mixed Construction Line |
| ⊗ Lookout | — Completed Road as Line |
| ⊙ Hot Spot - Spot Fire | — Planned Dozer Line |
| ⊙ Value at Risk | — Planned Hand Line |
| ⊙ Other | — Access or Improved Road |
| ⊙ Gate | — Other |
| ⊙ Fire Station | — Repair Line |
| ⊙ Structure Wrap | — Road Repair |
| ⊙ Stream Crossing | — Fire Edge (Field Collection) |
| ⊙ Resource Location | — Contained |
| ⊙ Repair Point | — Uncontained |
| ⊙ Hazard Tree | — Wildfire Daily Fire Perimeter |
| ⊙ Fence - Cut/Damaged | |
| ⊙ Dozer Push | |
| ⊙ Culvert | |

Rocky Mountain Team 3
5/25/2022 1927
Acres from IR
North American 1983 Datum, Lat/Long Grid



35°54'N
35°52'N
35°50'N
35°48'N
35°46'N
35°44'N
35°42'N
35°40'N
35°38'N
35°36'N

106°46'W 106°44'W 106°42'W 106°40'W 106°38'W 106°36'W 106°34'W 106°32'W 106°30'W 106°28'W 106°26'W 106°24'W 106°22'W 106°20'W 106°18'W

35°54'N
35°52'N
35°50'N
35°48'N
35°46'N
35°44'N
35°42'N
35°40'N
35°38'N
35°36'N