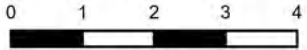


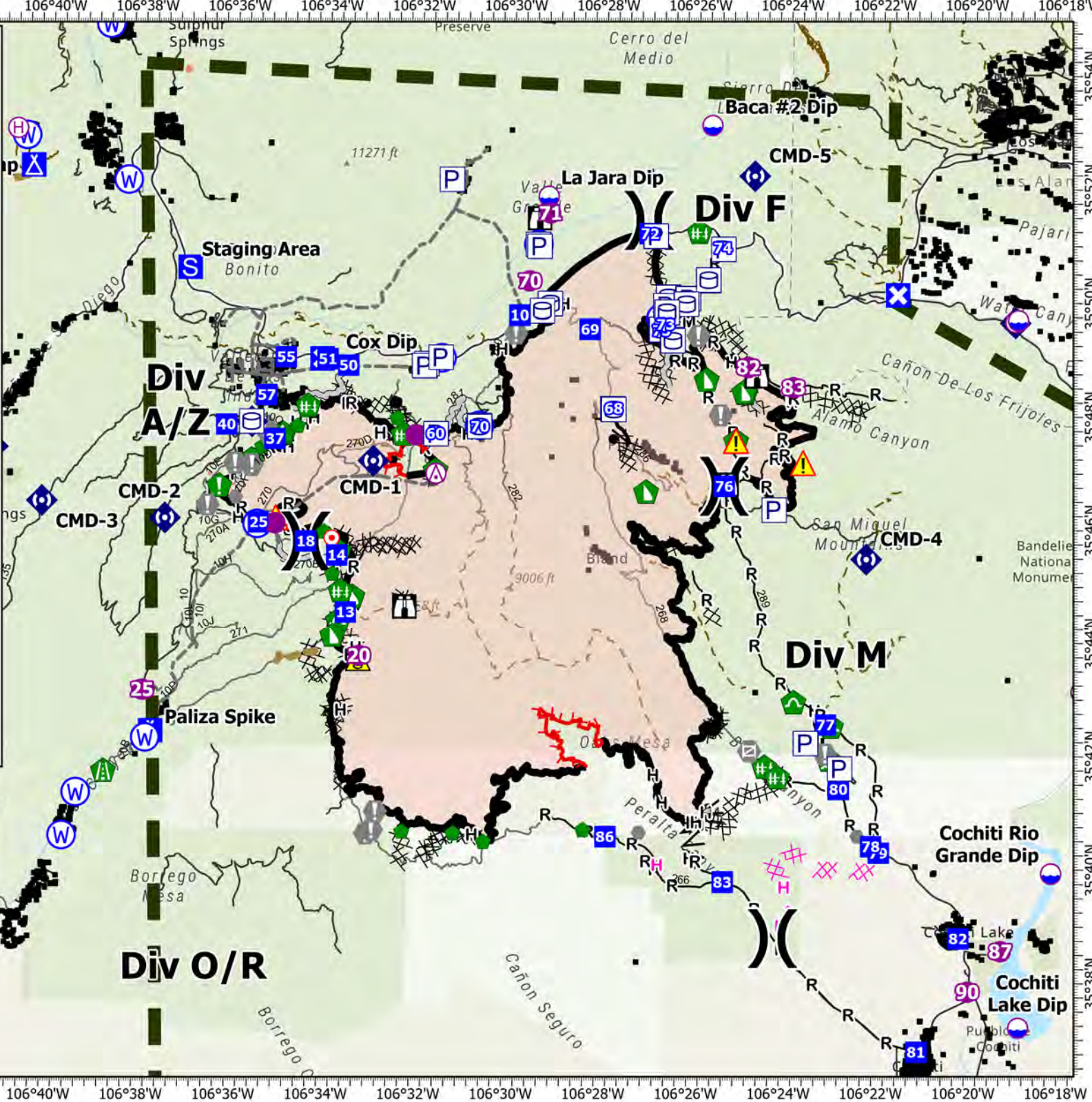
IAP

Cerro Pelado
NM-SNF-000049
5/27/22

45,605 acres at 5/22 at 2158



- | | |
|-------------------------|-------------------------------------|
| ⊗ Aerial Hazard | ◆ Internet Access |
| ⊙ Dip Site | ◆ Repeater |
| ⊙ Helispot | ▲ Safety Zone |
| ⊙ Helibase | ▲ Hazard |
| ⊗ Division Break | ⊙ Water Source |
| ⊗ Incident Command Post | — Completed Burnout |
| ■ Drop Point | ⊗ Completed Dozer Line |
| ⊗ Closure | ▲ Completed Fuel Break |
| ⊗ Camp | — Completed Hand Line |
| ■ Staging Area | — Completed Mixed Construction Line |
| ⊗ Lookout | — Completed Road as Line |
| ⊙ Hot Spot - Spot Fire | — Planned Dozer Line |
| ⊙ Value at Risk | — Planned Hand Line |
| ⊙ Other | — Access or Improved Road |
| ⊙ Gate | ● Highlighted Feature |
| ⊙ Fire Station | — Other |
| ⊙ Structure Wrap | — Repair Line |
| ⊙ Stream Crossing | — Road Repair |
| ⊙ Road Repair | — Road Repair |
| ⊙ Resource Location | ■ IA Response Area |
| ⊙ Repair Point | — Fire Edge (Field Collection) |
| ⊙ Hazard Tree | — Contained |
| ⊙ Fence - Cut/Damaged | — Uncontained |
| ⊙ Dozer Push | — Wildfire Daily Fire Perimeter |
| ⊙ Culvert | |



Rocky Mountain Team 3
5/26/2022 1901
Acres from IR
North American 1983 Datum, Lat, Long Grid