

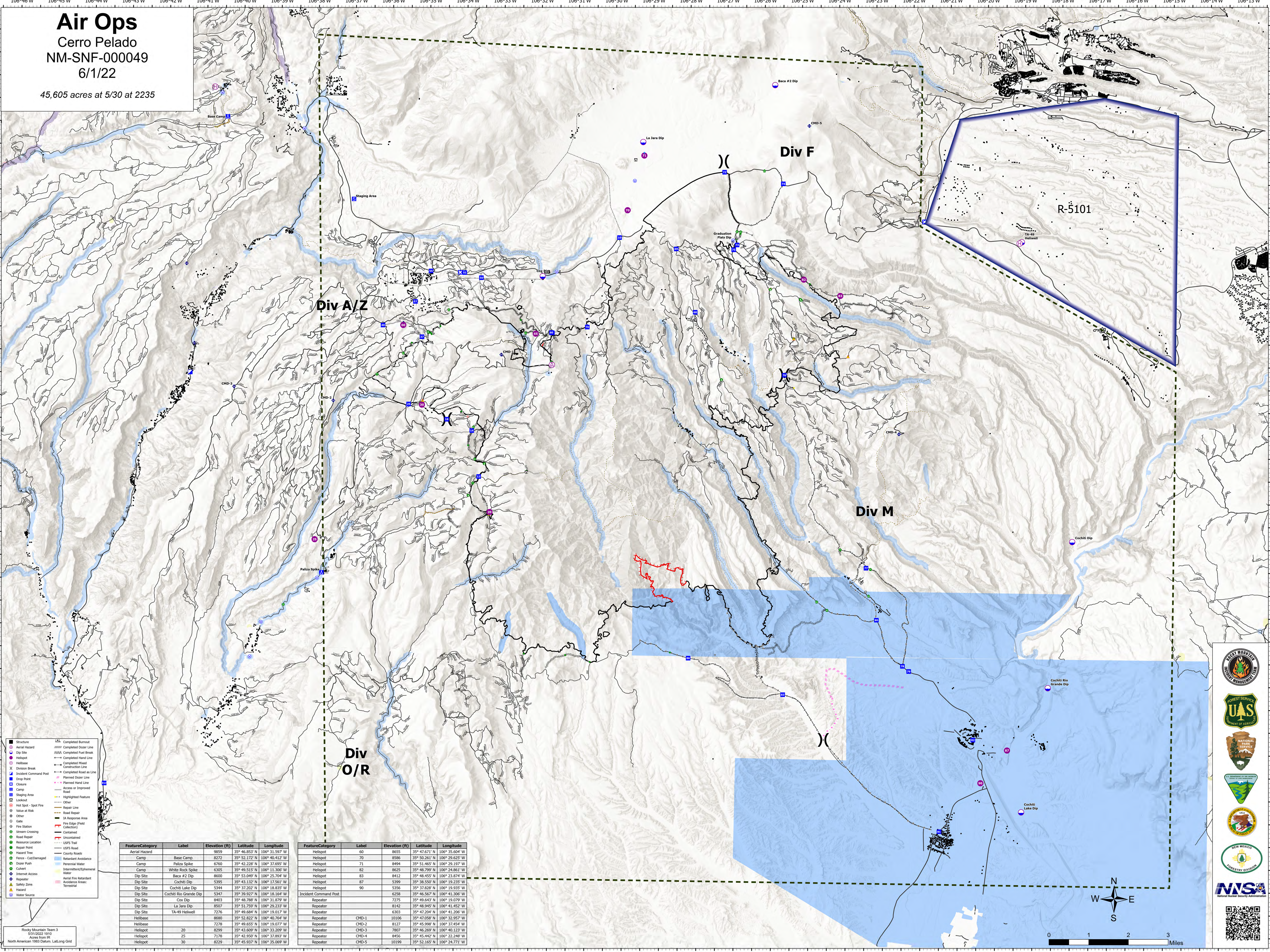
Air Ops

Cerro Pelado

NM-SNF-000049

6/1/22

45,605 acres at 5/30 at 2235



Feature Category	Label	Elevation (ft)	Latitude	Longitude	
Aerial Hazard		9859	35° 46.833' N	106° 31.597' W	
Camp	Base Camp	8272	35° 52.172' N	106° 40.412' W	
Camp	Paliza Spike	6760	35° 42.228' N	106° 37.695' W	
Camp	White Rock Spike	6305	35° 49.515' N	106° 11.306' W	
Dip Site	Baca #2 Dip	8600	35° 53.049' N	106° 25.704' W	
Dip Site	Cochiti Dip	5395	35° 43.132' N	106° 17.861' W	
Dip Site	Cochiti Lake Dip	5344	35° 37.202' N	106° 18.835' W	
Dip Site	Cochiti Rio Grande Dip	5347	35° 39.927' N	106° 18.164' W	
Dip Site	Cox Dip	8403	35° 48.788' N	106° 31.879' W	
Dip Site	La Jara Dip	8507	35° 51.759' N	106° 29.233' W	
Dip Site	TA-49 Hellwell	7276	35° 49.684' N	106° 19.017' W	
Helibase		8680	35° 52.822' N	106° 40.764' W	
Helibase		7278	35° 49.655' N	106° 19.077' W	
Helispot		8299	35° 43.609' N	106° 33.209' W	
Helispot		25	7178	35° 42.950' N	106° 37.893' W
Helispot		30	8229	35° 45.937' N	106° 35.069' W

Feature Category	Label	Elevation (ft)	Latitude	Longitude	
Helispot		60	8655	35° 47.671' N	106° 35.604' W
Helispot		70	8586	35° 50.261' N	106° 29.625' W
Helispot		71	8494	35° 51.465' N	106° 29.197' W
Helispot		82	8625	35° 48.799' N	106° 24.861' W
Helispot		83	8412	35° 48.455' N	106° 23.874' W
Helispot		87	3399	35° 38.552' N	106° 19.235' W
Helispot		90	5356	35° 37.828' N	106° 19.935' W
Incident Command Post		6258	35° 46.567' N	106° 41.306' W	
Repeater		7275	35° 49.643' N	106° 19.079' W	
Repeater		8142	35° 48.945' N	106° 41.452' W	
Repeater		6303	35° 47.204' N	106° 41.206' W	
Repeater	CHD-1	10106	35° 47.658' N	106° 32.857' W	
Repeater	CHD-2	8127	35° 45.998' N	106° 37.454' W	
Repeater	CHD-3	7807	35° 46.269' N	106° 40.123' W	
Repeater	CHD-4	8456	35° 45.442' N	106° 22.248' W	
Repeater	CHD-5	10199	35° 52.165' N	106° 24.771' W	

Rocky Mountain Team 3
6/1/22 1910
Aces from IR
North American 1983 Datum, LatLong Grid

NISA
National Incident Reporting System

