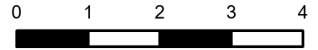


# IAP

Cerro Pelado  
NM-SNF-000049

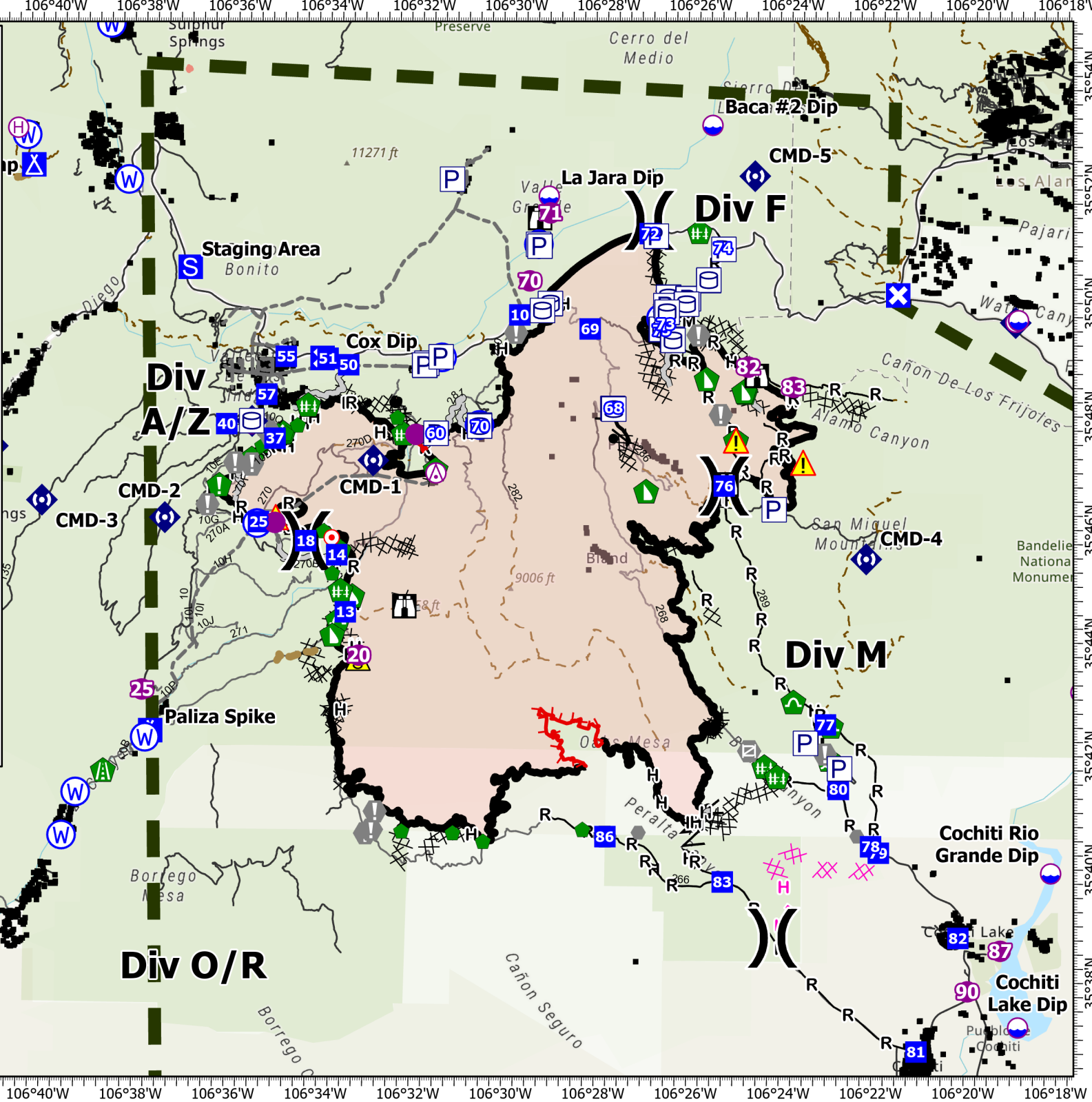
6/2/22 - 6/3/22

45,605 acres at 5/31 at 2232



- |                         |                                     |
|-------------------------|-------------------------------------|
| ⊗ Aerial Hazard         | ◆ Internet Access                   |
| ⊙ Dip Site              | ◆ Repeater                          |
| ● Helispot              | ▲ Safety Zone                       |
| ⊙ Helibase              | ▲ Hazard                            |
| ⊗ Division Break        | ⊙ Water Source                      |
| ■ Incident Command Post | — Completed Burnout                 |
| ■ Drop Point            | ⊗ Completed Dozer Line              |
| ⊗ Closure               | ▲ Completed Fuel Break              |
| ■ Camp                  | ⊙ Completed Hand Line               |
| ■ Staging Area          | ⊙ Completed Mixed Construction Line |
| ■ Lookout               | ⊙ Completed Road as Line            |
| ● Hot Spot - Spot Fire  | — Planned Dozer Line                |
| ● Value at Risk         | — Planned Hand Line                 |
| ● Other                 | — Access or Improved Road           |
| ● Gate                  | ● Highlighted Feature               |
| ● Fire Station          | — Other                             |
| ● Structure Wrap        | — Repair Line                       |
| ● Stream Crossing       | — Road Repair                       |
| ● Road Repair           | — Road Repair                       |
| ● Resource Location     | ■ IA Response Area                  |
| ● Repair Point          | — Fire Edge (Field Collection)      |
| ● Hazard Tree           | — Contained                         |
| ● Fence - Cut/Damaged   | — Uncontained                       |
| ● Dozer Push            | — Wildfire Daily Fire Perimeter     |
| ● Culvert               |                                     |

Rocky Mountain Team 3  
6/1/2022 0654  
Acres from IIR  
North American 1983 Datum, Lat/Long Grid



35°54'N  
35°52'N  
35°50'N  
35°48'N  
35°46'N  
35°44'N  
35°42'N  
35°40'N  
35°38'N  
35°36'N

106°18'W  
106°20'W  
106°22'W  
106°24'W  
106°26'W  
106°28'W  
106°30'W  
106°32'W  
106°34'W  
106°36'W  
106°38'W  
106°40'W  
106°42'W  
106°44'W  
106°46'W