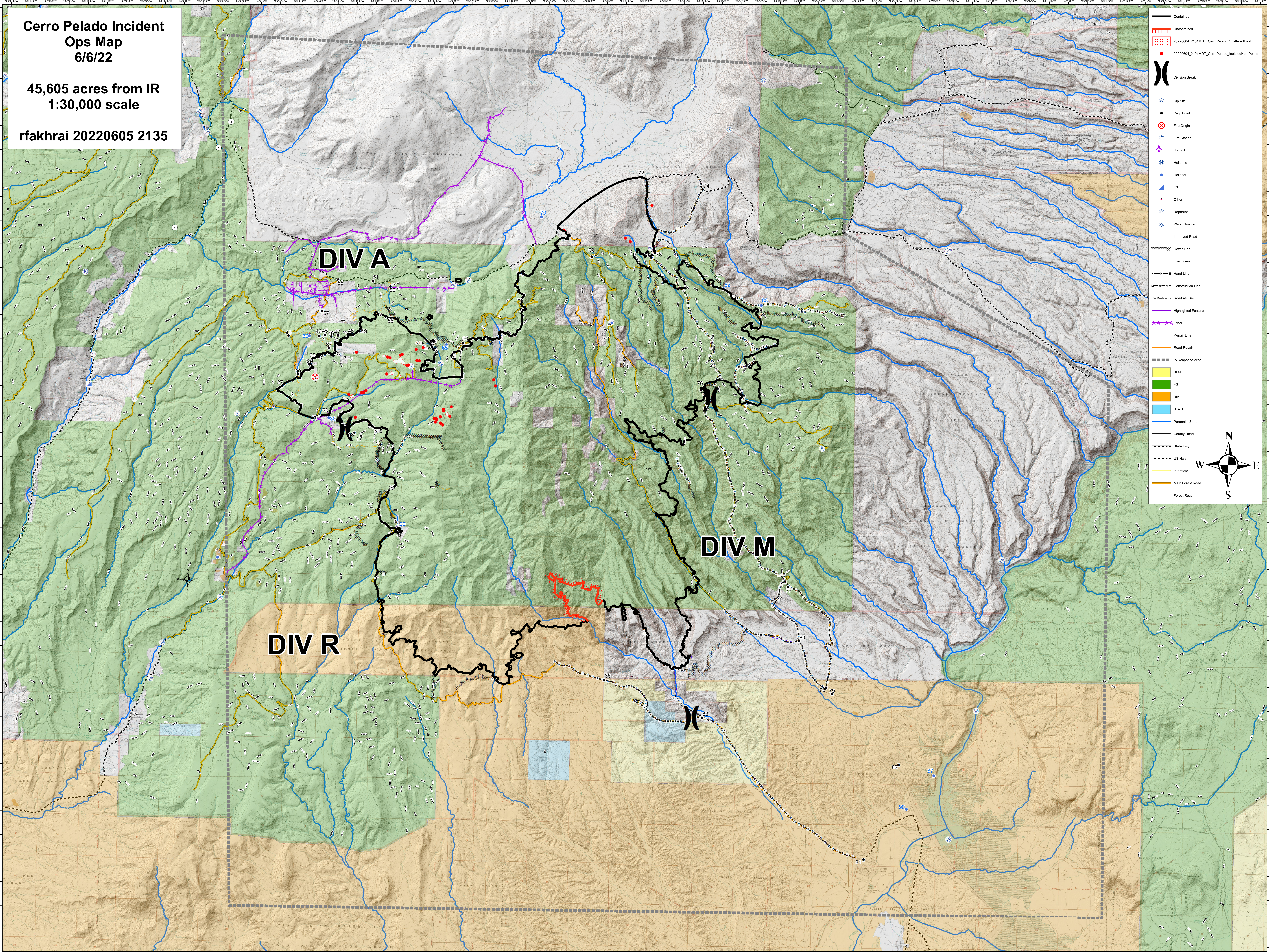


**Cerro Pelado Incident  
Ops Map  
6/6/22**

**45,605 acres from IR  
1:30,000 scale**

**rfakhrai 20220605 2135**



- Contained
- Uncontained
- 20220604\_2101MDT\_CerroPelado\_ScatteredHeat
- 20220604\_2101MDT\_CerroPelado\_IsolatedHeatPoints
- Division Break
- Dip Site
- Drop Point
- Fire Origin
- Fire Station
- Hazard
- Helibase
- Helispot
- ICP
- Other
- Repeater
- Water Source
- Improved Road
- Dozer Line
- Fuel Break
- Hand Line
- Construction Line
- Road as Line
- Highlighted Feature
- Other
- Repair Line
- Road Repair
- IA Response Area
- BLM
- FS
- BIA
- STATE
- Perennial Stream
- County Road
- State Hwy
- US Hwy
- Interstate
- Main Forest Road
- Forest Road

