



Cerro Pelado

NM-SNF-000049, P3PK47 (0310)

**Operational Period:
Tuesday, April 26, 2022
0700 – April 27, 2022 0700**

Check - In



IAP



Cerro Pelado Communication Phone
561-527-0804



**SA Red Team
Incident Commander – Steve Parrish**

INCIDENT OBJECTIVES (ICS 202)

1. Incident Name:	2. Operational Period: 0700 - 0700	
CERRO PELADO	Date/Time From: 04/26/2022 0700 TUE	Date/Time To: 04/27/2022 0700 WED
3. Objective(s):		
Management Objectives		
<p>1) Protection of human life and safety is the first priority for all actions taken on a wildfire and can overrule all other strategic/management objectives and incident requirements.</p> <p>2) Base management decisions on meeting objectives while also minimizing the risk of COVID-19 exposures to responders and the public. COVID-19 considerations may alter how you meet goals but should not lead to higher risk tactics.</p> <p>3) Maintain and strengthen relationships with the Santa Fe National Forest, private landowners, the public, cooperators and partners by providing timely and accurate information.</p> <p>4) Protect the unique attributes of impacted watersheds through actions that minimize sedimentation and invasive species movement.</p> <p>5) Protect impact to cultural resources through consultation with local forest specialists.</p>		
Control Objectives		
<p>1) Protection of human life and safety is the first priority for all actions taken and shall override all other incident control objectives. Evaluate risk vs. benefit in strategic and tactical planning and only commit operational resources to actions that have the highest probability of success.</p> <p>2) Keep fire out of Jemez Canyon.</p> <p>3) Keep fire East of Forest Road (FR) 10; Southeast of Community SLP; South of State Route (SR) 4; East of FR's 282 & 280; and North of FR 270.</p> <p>4) Minimize retardant impacts to Jemez Natural Recreation Area.</p> <p>5) Protect values at risk in the Valles Caldera National Preserve including watersheds, visitor and administrative infrastructure, historic structures, cultural resources, and important wildlife habitats.</p> <p>6) Provide initial attack resources to respond to any new ignitions within the TFR area to limit potential size and growth.</p>		
4. Operational Period Command Emphasis:		
* * * * L C E S * * * *		
General Situational Awareness:		
<ul style="list-style-type: none"> • Continued low RHs • No predicted precipitation for several days <p><u>WEATHER DISCUSSION:</u> Unusually early start to fire season. Critical to extreme fire weather for the next several days. Entire area is experiencing extended drought. Please see daily weather forecast for detailed report.</p>		
7. Prepared by:	MARG OLSON Position/Title: PLANNING SECTION CHIEF	Signature:
8. Approved by Incident Commander:	Name: STEVE PARRISH	Signature:
ICS 202	IAP Page	Date/Time: 04/25/2022 1900

ORGANIZATION ASSIGNMENT LIST (ICS 203)

1. Incident Name:		2. Operational Period: 0700 - 0700	
CERRO PELADO		Date/Time From: 04/26/2022 0700 TUE	Date/Time To: 04/27/2022 0700 WED
3. Incident Commander(s) and Command Staff:		FACILITIES UNIT	ADAMS, SUSANNE
IC/UC	PARRISH, STEVE G	GROUND SUPPORT UNIT	JOHNSON, ROBERT MIKE POST
DEPUTY	PEARSON, PAT	COMMUNICATIONS UNIT	STEARNS, BARRY RADZIVILL, DAVID (T)
SAFETY OFFICER	RIVERS, TONY; HAWKINS, TOMMY LIDDELL, BRAD; STONE, DAVID	MEDICAL UNIT	ADLER, FRED ARNETT, NICK
INFORMATION OFFICER	HIBBARD, CATHERINE; AURIEMMO, LESLIE ENGLE, JASON (T)	SECURITY UNIT	BRADFORD, KAREN L
LIAISON OFFICER	STEVENS, PAUL; ALLISON, STEPHANIE (T) WHALEN, RHEA (T)	FOOD UNIT	LOWE, JAMES
4. Agency/Organization Representative(s):		7. Operations Section:	
Agency/Organization	Name	OPS SECTION CHIEF	MYERS, PETER DAVIS, MIKE
USFS SANTA FE	CRESS, DEBBIE; MARSHALL, JEREMY; ELMORE, LANCE (FMO)	PLANNING OPS	EDGE, VICK; COOK, CHAD (T)
NEW MEXICO FORESTRY DIVISION	CRANE, LAWRENCE	Branch I	
NPS VALLES CALDERA	SILVA-BANUELOS, JORGE	BRANCH DIRECTOR	MORTON, HEATH
NPS BANDELIER	RODGERS, MARLA; BOLSER, BRIAN (FMO)	DIVISION/GROUP	M UNSTAFFED
TRIBAL LIAISON	MONTES, REUBEN	DIVISION/GROUP	A BURGETT, JOEL
LOS ALAMOS NATIONAL LABORATORY	NIETO, RICH	DIVISION/GROUP	Z PASCARELLA, ANDY
5. Planning Section:		DIVISION/GROUP	R ALVES, FRANK
CHIEF	FORDER, MISSY; OLSON, MARG	DIVISION/GROUP	R STRUCTURE ROBERTSON, CRAIG
RESOURCES UNIT	PHILLIPS, BRITTANY B SOBIESKI, SUE (VIRTUAL) (T)	Branch II	
SITUATION UNIT	KETT, SUSAN R	BRANCH DIRECTOR	TAYLOR, CORDELL
DEMOBILIZATION UNIT	THOMAS, DONNA L	DIVISION/GROUP	A/Z NIGHT EDWARDS, AARON
FIRE BEHAVIOR ANALYST	WARD, MIKE	7b. Air Operations Branch:	
HUMAN RESOURCE SPECIALIST	SUMMY, JANINE	AIR OPS BRANCH DIRECTOR	HOWARD, LYNN
TRAINING SPECIALIST		AIR SUPPORT SUPERVISOR	MASON, JOHN
GIS SPECIALIST	BARNES, TOMMY	HELIBASE MANAGER	BRIAN KLEISEN
TECHNOLOGY SUPPORT SPECIALIST	FARMER, TONY; PADDOCK, BRIAN WEBB, KELLY (T)	8. Finance/Administration Section:	
INCIDENT METEOROLOGIST	STEARNS, SCOTT	CHIEF	MEREDITH, JAMES M WARNER, JOHN R
DOCUMENTATION UNIT		TIME UNIT	WINKLER, KIMBERLY
READ	SILVA, ANDRE; PITTENGER, DAVE; BAIDEN, BECKY THOMPSON, LISA	PROCUREMENT UNIT	PELCH, GEMAA
6. Logistics Section:		COMPENSATION UNIT	LOWDER, DIANE
CHIEF	REVELS, CHRIS; ARTEAGA, JANE	COST UNIT	TRAVIS, DIANE
SUPPLY UNIT	PIPER, TOM		
9. Prepared By:	Name: MARG OLSON	Position/Title: PLANNING SECTION CHIEF	Signature:
ICS 203	IAP Page	Date/Time: 04/25/2022 1800	



To: All Incident Personnel, Cerro Pelado Fire

As Southern Area National Type I Incident Commander, I am committed to a policy of “zero tolerance” of inappropriate behavior during incident operations. Any form of harassment, discriminatory practices, or disrespectful behavior will not be tolerated. Known or reported acts will be dealt with appropriately.

I am particularly concerned about the perception that alcohol has a place in any of the Incident facilities. It is not appropriate to indulge in alcoholic beverages during any fire assignment.

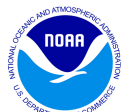
The National Team from the Southern Region has a policy of “NO ALCOHOL” from the time of dispatch until the time of physical release from the Incident. Members of the Team voluntarily comply with this policy; all incident personnel will be expected to do so also.

We endorse, support, and expect an attitude of mutual respect for all Incident personnel and the public we serve. We also, endorse the attitude and work ethic that places “Safety First, every time on every Incident.” We expect nothing less.

/s/Steve Parrish

Incident Commander

SAIMT 1



INCIDENT Weather Forecast



Forecast No: 3
Prediction For: Tuesday
Shift Date: April 26, 2022
Forecast Issued: April 25, 2022 at 1800

Name of Incident: Cerro Pelado Fire
Unit: Santa Fe NF
Incident Meteorologist: Scott Stearns
 (208) 577-1617

Discussion: There is potential for some cumulus development Tuesday afternoon leading to isolated sprinkles or virga with gusty variable winds, which would not result in wetting rain. Expect higher humidities again tonight across the region. Winds aloft become more southwesterly Wednesday, and will start to push low level moisture eastward when there is potential for a few thunderstorms. Any storms may be dry or a mix of dry and wet with gusty variable winds.

Forecast for Today:

Sky/Weather: Slight chances for virga / sprinkles in the evening with gusty and variable winds possible

	<u>Jemez Springs 8,000'</u>			<u>Cerro Pelado Pk 9,400'</u>		
Max Temperature:		65			59	°F
Min RH:		20			24	%
Wind (20 FT):	Southeast shifting to south in the afternoon					
...	S	9		S	11	mph
...	Gusts:	20		Gusts:	25	mph
Haines Index:		4			4	
LAL:		1			1	
Chance of Precipitation:		10			10	%
Tonight's Min Temperature:		35			30	°F
Tonight's Max RH:		80			70	%
Tonight's Wind (20 FT):	Overnight winds will be terrain driven (downslope / downvalley)					
...	terrain	6		SSW	10	mph
...	Gusts:	12		Gusts:	20	mph
Tonight's Haines Index:		4			4	
Tonight's LAL:		1			1	
Tonight's Chnc of Precip:		10			10	%

Forecast for Wednesday:

Sky/Weather: Chances for thunderstorms (both dry and wet) with gusty and erratic winds possible

	<u>Jemez Springs 8,000'</u>			<u>Cerro Pelado Pk 9,400'</u>		
Max / Min Temperature:	70	35		63	30	°F
Min / Max RH:	21	30		26	35	%
Wind (20 FT):						
...	SSW	8		SW	9	mph
...	Gusts:	20		Gusts:	25	mph
Haines Index:	6		LAL: 3	Precip Chance:	35	

Extended Outlook: Flow turns southwest and strengthens Thursday and Friday, leading to near-critical fire weather conditions on both days. These southwest winds will bring drier air to the region as well.

		<u>Max T</u>	<u>Min T</u>	<u>Min RH</u>	<u>Max RH</u>	<u>Ridge Winds @ 1500</u>	<u>Weather</u>
8,600'	Thu:	70	39	10	35	SW @ 12 G25	Critical Fire Weather
	Fri:	64	35	11	35	W @ 20 G35	
	Sat:	65	35	11	35	W @ 8 G22	

FIRE BEHAVIOR FORECAST

FORECAST NUMBER: 03	TYPE OF FIRE: Wildland, Type 1
FIRE NAME: Cerro Pelado	OPERATIONAL PERIOD: Day Shift
DATE ISSUED: 4/25/22 TIME ISSUED: 1800	SHIFT DATE: Tuesday, April 26, 2022
UNIT: Santa Fe NF	SIGNED: Greg Titus, FBAN <i>Greg Titus</i>

WEATHER SUMMARY:

See weather forecast in today's IAP
Local Thresholds – Watch Outs
Min RH < 15%, Winds > 30 mph

FIRE BEHAVIOR:

GENERAL:

Although weather conditions have moderated active fire behavior is possible today.

Current Fire Environment Conditions:

Fine Dead Fuel Moisture = 5%, 1,000 Hour Fuel Moisture = 11%, Live Shrub Moisture = 82%
ERC's remain around the 90th percentile @ Jemez RAWs, but at or near maximum value for this date.

Fire Behavior based on MAXIMUM values for the fuel models shown, exposed fuels on steep slope.

Fuel Model	Rate of Spread	Flame Length
Grass/Shrub	6-14 chains/hour	2-4 feet
Timber	6-16 chains/hour	7-10 feet

Spotting from ridge top torching trees up to **0.4 mile during wind gusts**. Probability of Ignition = **61%**
In **one hour** new spot fires or ignitions can reach **7 acres**.

Specific Areas of Concern:

Alpha – With southerly winds today expect the fire to move to the north. On the western side of the division this will push the fire toward Vallecitos los Indios. Fuels treatments in this area will reduce fire behavior as the fire is pushed in this area. On the eastern side of the division the fire will push into the burn scars from the Cajete Fire (2017) and the Las Conchas Fire (2011). These fire scars have been diminishing fire behavior the last several days and this is expected to continue. Only moderate fire behavior is expected on Alpha.

Zulu – Expect the most active fire behavior from the northeast division break to the eastern point of the fire. Fire will continue to burn east into the Las Conchas fire scar. Minimal to moderate fire behavior due to the continuity of fuels. Large heavy fuels continue to burn in this area. The southern flank fire will continue to move south with mostly backing fire, expect minimal fire behavior in Division Zulu.

AIR OPERATIONS: Mostly sunny skies with some wind gusts, but a good day for aviation operations.

Potential areas of smoke.

SAFETY:

Watch Out Situation 3 is emphasized today: Safety zones and escape routes not identified. Very dry and windy conditions are expected later this week. Start planning now. Be sure you know the nearest safety zone and the escape route to get there.

Send any fire behavior observations or photos to: gregory_titus@fws.gov

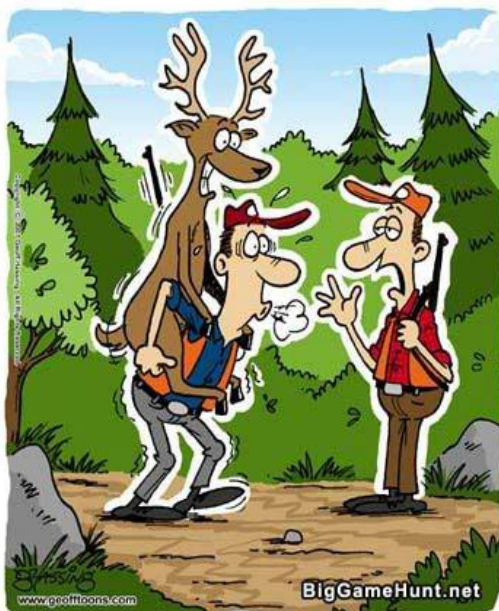


HEALTH AND SAFETY MESSAGE

“We don’t plan on luck to be safe, we plan on good risk management and good decisions”....the Red Team

INCIDENT: Cerro Pelado	DATE: Tuesday, April 26 th , 2022
Major Hazards and Risks: Values of Sleep, Fireline Adaptability, 376 Road	
<p>Values of Sleep – “Sleep enriches a diversity of functions including ability to learn, memorize and make logical decisions” and “sleep recalibrates our emotional brain circuits, allowing us to navigate next-day social and psychological challenges with cool headed composure”. With a full night’s rest, we’re at our best for making decisions and solving problems creatively; without it, we’re just simply worse at everything, whether or not we’re conscious of it, which increases the innate risks of firefighting and incident management. Citation – Why We Sleep, Unlocking the Power of Sleep and Dreams, Walker, Matthew PhD.</p> <p>Fireline Adaptability: Fire <i>conditions and situations can change rapidly</i> and often. Fire fighters must be able to adapt to changes in the plan, weather or fire behavior. Flexibility is the key to continuing efforts in suppression operations.</p> <p>376 Road – The access road (376) to the new Base Camp currently has numerous potholes, washouts, and hazardous driving conditions. Be aware of local traffic on the road and adjust your speeds when you leave Hwy 126 to enter the 376 road. Driving conditions can become more hazardous when we begin to utilize the road more often.</p>	

“Unclear Instructions”



*YOU DO REALIZE THAT YOU'RE SUPPOSED TO SHOOT THE DEER BEFORE PACKING IT OUT, DON'T YOU?

In Confusing and Uncertain Situations (Good Leaders)

- *Motivate* firefighters with a “can do safely” attitude
- *Take Charge of resources*
- *Demonstrate Initiative* by taking action in the absence of orders
- *Communicate* by giving specific instructions, getting feedback
- *Supervise* at the scene of action

Division/Group Assignment List (ICS 204 WF)
Controlled Unclassified Information//Basic

1. Incident Name:			3.			
CERRO PELADO			Branch:		Division/Group	
2. Operational Period: 0700 - 0700			I		A	
Date/Time From: 04/26/2022 0700 TUE	Date/Time To: 04/27/2022 0700 WED					
4. Operations Personnel						
OPERATIONS CHIEF		PETE MYERS, MIKE DAVIS VICKY EDGE, CHAD COOK (T)		BRANCH DIRECTOR		HEATH MORTON
DIVISION/GROUP SUPERVISOR		JOEL BURGETT				
5. Resources Assigned this Period						
Strike Team / Task Force / Resource Designator	LWD	Leader	Number Persons	Drop Off PT./Time	Pick Up PT./Time	
C-1 T2IA CALIFORNIA 63	05/07	RAY BATRES	20	JFC/0700	JFC/1900	
C-8 T2IA GRAYBACK	04/28	TIM BREWER	20	JFC/0700	JFC/1900	
C-2 T2 LAVA RIVER	05/07	WILL CONTERAS	20	JFC/0700	JFC/1900	
C-9 T2- ROCHA	05/08	JORGE DURAN	20	JFC/0700	JFC/1900	
C-13 T2 MOUNTAINEER CONTRACTING	05/09	JUAN PEREZ	20	JFC/0700	JFC/1900	
E-123 NM MODULE 6		NATT HEFFLER	4	JFC/0700	JFC/1900	
E-129 ENG3 ENGINE1441 NM-BLM		FORREST PETERMAN	3	JFC/0700	JFC/1900	
E-5 ENG3 STONE MOUNTAIN PROTECTION		JOHN DICKERSON	4	JFC/0700	JFC/1900	
ENGINE 431 ENG4 SNF		JOE SOUKUP	5	JFC/0700	JFC/1900	
ENGINE 2601 ENG6 MT-BLM		JEFF AUGBUGER	4	JFC/0700	JFC/1900	
LA-6 ENG6		SHRIVER	3	JFC/0700	JFC/1900	
LA-7 ENG6		LIEMER	3	JFC/0700	JFC/1900	
O-8.8 SOF1	05/06	TOMMY HAWKINS	1	JFC/0700	JFC/1900	
LA WTT2 T-1		CROCKETT	2	JFC/0700	JFC/1900	
E-431 UTV			2	JFC/0700	JFC/1900	
O-99 RIMS	05/08	TANNER SMITH		JFC/0700	JFC/1900	
MED 1			2	JFC/0700	JFC/1900	
6. Control Operations/Work Assignments:						
8. Division/Group Communication Summary						
Function	Channel	RX Frequency N/W	RX Tone/NAC	TX Frequency N/W	TX Tone/NAC	Mode
COMMAND	1	169.7500 N	146.2	167.1000 N	146.2	A
COMMAND	2	169.5375 N	146.2	164.7125 N	146.2	A
COMMAND	3	170.4125 N	146.2	165.9625 N	146.2	A
COMMAND	11	172.3000 N		165.0125 N		A
TACTICAL	5	168.0500 N	146.2	168.0500 N	146.2	A
AIR TO GROUND	12	168.3125 N		168.3125 N		A
9. Prepared By (Resource Unit Leader)		Approved By (Planning Section Chief)		Date		Time
BRITTANY PHILLIPS		MISSY FORDER		04/25/2022		1900

Division/Group Assignment List (ICS 204 WF)

Controlled Unclassified Information//Basic

1. Incident Name:				3.			
CERRO PELADO				I		A	
2. Operational Period: 0700 - 0700							
Date/Time From: 04/26/2022 0700 TUE		Date/Time To: 04/27/2022 0700 WED					
4. Operations Personnel							
OPERATIONS CHIEF		PETE MYERS, MIKE DAVIS VICKY EDGE, CHAD COOK (T)		BRANCH DIRECTOR		HEATH MORTON	
DIVISION/GROUP SUPERVISOR		JOEL BURGETT					
6. Control Operations/Work Assignments:							
<p>Task: Continue to provide engine resource presence for the Community SLP, and improve control lines near SLP structures. Continue handline from the Community SLP to the 10 Q, 10 A, and 10 DB area towards DP 30.</p> <p>Purpose: To reduce the fire threat to the Community SLP, and keep fire progression East of FS-10.</p> <p>End State: Lift evacuations and return residents to community.</p>							
7. Special Instructions:							
<ul style="list-style-type: none"> Briefing will be held at Jemez Falls Campground 0700. Coordinate with READ before ground disturbance. Coordinate with Sandoval County, State Police, and Tribal Nations Identify impassable roads. With GPS locations in Field Map. Do not post photos with Archaeological resources that have location information. Leave all gates as you found them, either opened or closed. If the gate was closed when you arrived, close it as you leave. Identify IA resources off each division to support IA under TFR. ** IN THE EVENT OF AN IWI: CONTACT COMMUNICATIONS ON COMMAND 							
8. Division/Group Communication Summary							
Function	Channel	RX Frequency N/W	RX Tone/NAC	TX Frequency N/W	TX Tone/NAC	Mode	
COMMAND	1	169.7500 N	146.2	167.1000 N	146.2	A	
COMMAND	2	169.5375 N	146.2	164.7125 N	146.2	A	
COMMAND	3	170.4125 N	146.2	165.9625 N	146.2	A	
COMMAND	11	172.3000 N		165.0125 N		A	
TACTICAL	5	168.0500 N	146.2	168.0500 N	146.2	A	
AIR TO GROUND	12	168.3125 N		168.3125 N		A	
9. Prepared By (Resource Unit Leader)			Approved By (Planning Section Chief)			Date	Time
BRITTANY PHILLIPS			MISSY FORDER			04/25/2022	1900

Division/Group Assignment List (ICS 204 WF)
Controlled Unclassified Information//Basic

1. Incident Name:			3.			
CERRO PELADO			Branch:		Division/Group	
2. Operational Period: 0700 - 0700			I		Z	
Date/Time From: 04/26/2022 0700 TUE	Date/Time To: 04/27/2022 0700 WED					
4. Operations Personnel						
OPERATIONS CHIEF		PETE MYERS, MIKE DAVIS VICKY EDGE, CHAD COOK (T)		BRANCH DIRECTOR		HEATH MORTON
DIVISION/GROUP SUPERVISOR		ANDY PASCARELLA				
5. Resources Assigned this Period						
Strike Team / Task Force / Resource Designator	LWD	Leader	Number Persons	Drop Off PT./Time	Pick Up PT./Time	
C-12 T2 BIRRUETA	05/08	CRISTIAN JUAREZ	20	JFC/0700	JFC/1900	
ENGINE 304 ENG3		MUNRO	3	JFC/0700	JFC/1900	
E-1 ENG6 CARBONDALE	05/07	EVANS	3	JFC/0700	JFC/1900	
E-2 ENG6 DEBEQUE	05/08	VOORHEES	3	JFC/0700	JFC/1900	
LA T-5 WTT2		AUSTIN	2	JFC/0700	JFC/1900	
E-114 WTT2	05/08	WYATT LACKMAN	2	JFC/0700	JFC/1900	
LA WTT2		TBD		JFC/0700	JFC/1900	
O-8.8 SOF1	05/06	TOMMY HAWKINS	1	JFC/0700	JFC/1900	
MED 2			2	JFC/0700	JFC/1900	
6. Control Operations/Work Assignments:						
Task: Identify opportunities for containment lines along FS 270C network and East of FS 10.						
Purpose: Hold fire North of FS 270, FS 270 C network, and East of FS 10.						
End State: Hold fire within the identified road system to minimize impact on landscape.						
7. Special Instructions:						
<ul style="list-style-type: none"> Briefing will be held at Jemez Falls Campground 0700. Coordinate with READ before ground disturbance. Coordinate with Sandoval County, State Police, and Tribal Nations Identify impassable roads. With GPS locations in Field Map. Do not post photos with Archaeological resources that have location information. Leave all gates as you found them, either opened or closed. If the gate was closed when you arrived, close 						
8. Division/Group Communication Summary						
Function	Channel	RX Frequency N/W	RX Tone/NAC	TX Frequency N/W	TX Tone/NAC	Mode
COMMAND	1	169.7500 N	146.2	167.1000 N	146.2	A
COMMAND	2	169.5375 N	146.2	164.7125 N	146.2	A
COMMAND	3	170.4125 N	146.2	165.9625 N	146.2	A
COMMAND	11	172.3000 N		165.0125 N		A
TACTICAL	6	168.2000 N	146.2	168.2000 N	146.2	A
AIR TO GROUND	12	168.3125 N		168.3125 N		A
9. Prepared By (Resource Unit Leader)			Approved By (Planning Section Chief)		Date	Time
BRITTANY PHILLIPS			MISSY FORDER		04/25/2022	1900

Division/Group Assignment List (ICS 204 WF)
Controlled Unclassified Information//Basic

1. Incident Name:		3.	
CERRO PELADO		Branch: I	Division/Group Z
2. Operational Period: 0700 - 0700			
Date/Time From: 04/26/2022 0700 TUE	Date/Time To: 04/27/2022 0700 WED		
4. Operations Personnel			
OPERATIONS CHIEF	PETE MYERS, MIKE DAVIS VICKY EDGE, CHAD COOK (T)	BRANCH DIRECTOR	HEATH MORTON
DIVISION/GROUP SUPERVISOR	ANDY PASCARELLA		

7. Special Instructions:

it as you leave.

- Identify IA resources off each division to support IA under TFR.
- ** IN THE EVENT OF AN IWI: CONTACT COMMUNICATIONS ON COMMAND

8. Division/Group Communication Summary						
Function	Channel	RX Frequency N/W	RX Tone/NAC	TX Frequency N/W	TX Tone/NAC	Mode
COMMAND	1	169.7500 N	146.2	167.1000 N	146.2	A
COMMAND	2	169.5375 N	146.2	164.7125 N	146.2	A
COMMAND	3	170.4125 N	146.2	165.9625 N	146.2	A
COMMAND	11	172.3000 N		165.0125 N		A
TACTICAL	6	168.2000 N	146.2	168.2000 N	146.2	A
AIR TO GROUND	12	168.3125 N		168.3125 N		A

9. Prepared By (Resource Unit Leader)		Approved By (Planning Section Chief)		Date	Time
BRITTANY PHILLIPS		MISSY FORDER		04/25/2022	1900

Division/Group Assignment List (ICS 204 WF)
Controlled Unclassified Information//Basic

1. Incident Name:			3.			
CERRO PELADO			Branch:		Division/Group	
2. Operational Period: 0700 - 0700			I		R	
Date/Time From: 04/26/2022 0700 TUE	Date/Time To: 04/27/2022 0700 WED					
4. Operations Personnel						
OPERATIONS CHIEF		PETE MYERS, MIK DAVIS VICKY EDGE, CHAD COOK (T)		BRANCH DIRECTOR		HEATH MORTON
DIVISION/GROUP SUPERVISOR		FRANK ALVES				
5. Resources Assigned this Period						
Strike Team / Task Force / Resource Designator		LWD	Leader	Number Persons	Drop Off PT./Time	Pick Up PT./Time
C-7 T1 MORMON LAKE IHC		05/08	SARA SWEENEY	21	JFC/0700	JFC/1900
C-14 T2IA TAYLOR		05/08	VERNON JACKSON	19	JFC/0700	JFC/1900
O-17 REAF			BECKY BAISDEN	1	JFC/0700	JFC/1900
O-117 REAF		05/08	LISA THOMPSON	1	JFC/0700	JFC/1900
6. Control Operations/Work Assignments:						
Task: Identify road system for potential containment lines. Improve exiting roads and construct dozer or hand lines as appropriate to contain fire.						
Purpose: Keep fire out of private inholdings while lessening fire movement to the South and Southeast						
End State: Lessening the foot print of the Cerro Pelado fire while minimizing the impact to private lands.						
7. Special Instructions:						
<ul style="list-style-type: none"> • Briefing will be held at Jemez Falls Campground 0700. • Coordinate with READ before ground disturbance. • Coordinate with Sandoval County, State Police, and Tribal Nations • Identify impassable roads. With GPS locations in Field Map. • Do not post photos with Archaeological resources that have location information. • Leave all gates as you found them, either opened or closed. If the gate was closed when you arrived, close it as you leave. • Identify IA resources off each division to support IA under TFR. • ** IN THE EVENT OF AN IWI: CONTACT COMMUNICATIONS ON COMMAND 						
8. Division/Group Communication Summary						
Function	Channel	RX Frequency N/W	RX Tone/NAC	TX Frequency N/W	TX Tone/NAC	Mode
COMMAND	1	169.7500 N	146.2	167.1000 N	146.2	A
COMMAND	2	169.5375 N	146.2	164.7125 N	146.2	A
COMMAND	3	170.4125 N	146.2	165.9625 N	146.2	A
TACTICAL	8	168.2500 N	146.2	168.2500 N	146.2	A
COMMAND	11	172.3000 N		165.0125 N		A
AIR TO GROUND	12	168.3125 N		168.3125 N		A
9. Prepared By (Resource Unit Leader)			Approved By (Planning Section Chief)		Date	Time
BRITTANY PHILLIPS			MISSY FORDER		04/25/2022	1900

Division/Group Assignment List (ICS 204 WF)

Controlled Unclassified Information//Basic


1. Incident Name:			3.			
CERRO PELADO			I	STRUCTURE		
2. Operational Period: 0700 - 0700						
Date/Time From: 04/26/2022 0700 TUE		Date/Time To: 04/27/2022 0700 WED				
4. Operations Personnel						
OPERATIONS CHIEF		PETE MYERS, MIKE DAVIS VICKY EDGE, CHAD COOK (T)		BRANCH DIRECTOR		HEATH MORTON
DIVISION/GROUP SUPERVISOR		CRAIG ROBERTSON				
5. Resources Assigned this Period						
Strike Team / Task Force / Resource Designator		LWD	Leader	Number Persons	Drop Off PT./Time	Pick Up PT./Time
TBD						
6. Control Operations/Work Assignments:						
<p>Task: Identify structures threatened by the Cerro Pelado wildfire and develop a structure protection plan in coordination with the local cooperating fire agencies.</p> <p>Purpose: Triage all structures identified for structure protection needs.</p> <p>End State: Threat to identified structures has been reduced as much as practical.</p>						
7. Special Instructions:						
<ul style="list-style-type: none"> Briefing will be held at Jemez Falls Campground 0700. Coordinate with READ before ground disturbance. Coordinate with Sandoval County, State Police, and Tribal Nations Identify impassable roads. With GPS locations in Field Map. Do not post photos with Archaeological resources that have location information. Leave all gates as you found them, either opened or closed. If the gate was closed when you arrived, close it as you leave. Identify IA resources off each division to support IA and TFR. ** IN THE EVENT OF AN IWI: CONTACT COMMUNICATIONS ON COMMAND 						
8. Division/Group Communication Summary						
Function	Channel	RX Frequency N/W	RX Tone/NAC	TX Frequency N/W	TX Tone/NAC	Mode
COMMAND	1	169.7500 N	146.2	167.1000 N	146.2	A
COMMAND	2	169.5375 N	146.2	164.7125 N	146.2	A
COMMAND	3	170.4125 N	146.2	165.9625 N	146.2	A
TACTICAL	7	168.6000 N	146.2	168.6000 N	146.2	A
COMMAND	11	172.3000 N		165.0125 N		A
AIR TO GROUND	12	168.3125 N		168.3125 N		A
9. Prepared By (Resource Unit Leader)			Approved By (Planning Section Chief)		Date	Time
BRITTANY PHILLIPS			MISSY FORDER		04/25/2022	1900

Division/Group Assignment List (ICS 204 WF)
Controlled Unclassified Information//Basic

1. Incident Name:			3.			
CERRO PELADO			Branch:		Division/Group	
2. Operational Period: 0700 - 0700			II		A/Z NIGHT	
Date/Time From: 04/26/2022 0700 TUE	Date/Time To: 04/27/2022 0700 WED					
4. Operations Personnel						
OPERATIONS CHIEF		PETE MYERS, MIKE DAVIS VICKY EDGE, CHAD COOK (T)		BRANCH DIRECTOR		CORDELL TAYLOR
DIVISION/GROUP SUPERVISOR		AARON EDWARDS				
5. Resources Assigned this Period						
Strike Team / Task Force / Resource Designator		LWD	Leader	Number Persons	Drop Off PT./Time	Pick Up PT./Time
TBD						
6. Control Operations/Work Assignments:						
Task: Patrol and monitor fire						
Purpose: Alert operations of any problems						
End State: Ensure quick response as needed						
7. Special Instructions:						
<ul style="list-style-type: none"> • Briefing will be held at Jemez Falls Campground 0700. • Coordinate with READ before ground disturbance. • Coordinate with Sandoval County, State Police, and Tribal Nations • Identify impassable roads. With GPS locations in Field Map. • Do not post photos with Archaeological resources that have location information. • Leave all gates as you found them, either opened or closed. If the gate was closed when you arrived, close it as you leave. • Identify IA resources off each division to support IA under TFR. • ** IN THE EVENT OF AN IWI: CONTACT COMMUNICATIONS ON COMMAND 						
8. Division/Group Communication Summary						
Function	Channel	RX Frequency N/W	RX Tone/NAC	TX Frequency N/W	TX Tone/NAC	Mode
COMMAND	1	169.7500 N	146.2	167.1000 N	146.2	A
COMMAND	2	169.5375 N	146.2	164.7125 N	146.2	A
COMMAND	3	170.4125 N	146.2	165.9625 N	146.2	A
COMMAND	11	172.3000 N		165.0125 N		A
9. Prepared By (Resource Unit Leader)			Approved By (Planning Section Chief)		Date	Time
BRITTANY PHILLIPS			MISSY FORDER			

INCIDENT RADIO COMMUNICATIONS PLAN I-205				1. INCIDENT NAME			2. DATE/TIME PREPARED			3. OPERATIONAL PERIOD DATE/TIME		
				Cerro Pelado			4/25/2022 1700			04/26/22 0700 - 04/27/22 0700		
4. BASIC RADIO CHANNEL UTILIZATION												
Ch #	Function	Channel Name	Assignment	RX Freq	N/W	RX Tone/NAC	TX Freq	N/W	TX Tone/NAC	Mode Analog (A) Digital (D) Mixed (M)	Remarks	
1	Command	CMD 1	INOP	169.7500	N	146.2	167.1000	N	146.2	A	Cerro Pelado (Inop)	
2	Command	CMD 2	INOP	169.5375	N	146.2	164.7125	N	146.2	A	(Inop)	
3	Command	CMD 3	INOP	170.4125	N	146.2	165.9625	N	146.2	A	(Inop)	
4	Unassigned		Unassigned									
5	Tactical	TAC 1	DIV A	168.0500	N	146.2	168.0500	N	146.2	A		
6	Tactical	TAC 2	DIV Z	168.2000	N	146.2	168.2000	N	146.2	A		
7	Tactical	TAC 3	STRUCTURAL PROTECTION	168.6000	N	146.2	168.6000	N	146.2	A		
8	Tactical	TAC 4	DIV R	168.2500	N	146.2	168.2500	N	146.2	A		
9	Tactical	TAC 5	Unassigned	166.7250	N	146.2	166.7250	N	146.2	A		
10	Tactical	TAC 6	REM TEAM	166.7750	N	146.2	166.7750	N	146.2	A	Night Shift	
11	Command	PELADO	All Divisions	172.3000	N		165.0125	N	131.8	A	Santa Fe Dispatch	
12	Air Ground	A/G 51		168.3125	N		168.3125	N		A	Local Air to Ground	
13	Air Ground	A/G PRI		166.8250	N		166.8250	N		A		
14	Air Ground	A/G SEC		168.7375	N		168.7375	N		A		
15	Medivac	VMED 28		155.3400	N		155.3400	N	156.7	A	Air Ambulance	
16	AIRGUARD			168.6250	N		168.6250	N	110.9	A		
5. Special Instructions:		USE HUMAN REPEATER WHEN NECESSARY. CMD 1 - 3 ARE NOT IN OPERATION YET.										
6. I-205 Prepared By: Communications Unit Leader			Name: Barry Stearns					Signature: <i>Barry H Stearns</i>				

1. INCIDENT NAME: Cerro Pelado	2. OPS PERIOD DATE: 4/26/22	START TIME: 0900	END TIME: 2030	SUNRISE 0617	SUNSET 1946
---	---------------------------------------	----------------------------	--------------------------	------------------------	-----------------------

3. REMARKS and RISK MITIGATIONS: All missions will be analyzed in terms of hazards and risks. Insure to brief for all IA missions to include new frequencies, ground contacts and other aircraft. High level to low level recon of each new LZ/Dipsite  Retardant Avoidance areas:	4. READY ALERT AIRCRAFT: IA 7HE See Medical Plan	5. TFR # 2/2366 Freq: 118.825 Surface ≥ 14,000' MSL 6 nautical miles from 35° 49' 00" x 106° 31' 00"
---	---	---

6. PERSONNEL	NAME	PHONE #	7. FREQUENCIES	AM	FM	8. FIXED-WING
AOBD	Lynne Howard	678-699-3266	A/A (Fixed/TFR)	118.8250		Air Attack: 78NA / 690B / Base: ABQ Lead Planes/Airtankers - Order through Air Attack If air attack is not up---order through AOBD. TA49 35° 49.6644'N x 106° 19.0908'W Santa Fe Airport (SAF) 35° 37.02'N x 106° 05'.22'W Costs to: 2022.cerropelado.finance@firenet.gov
ASGS	John Mason	865-336-6664	A/A (Rotor)	121.3250		
ATGS ATGS-T	Greg Haxby Adam Soper	208-709-2459	A/G Command		166.8250	
HEBM (Santa Fe)	Brian Kleisen	505-467-9351	A/G Tactical		168.7375	
HMGB (7HE)	Josh Brookshire	505-670-9385	DECK (Santa Fe)		163.100	
HMGB (3CH)	Ben Thayer	208-830-1636				
Santa Fe Dispatch - Aircraft	Darrel	505-438-5600	AIRGUARD <small>(emergency only)</small>		168.6250 TX Tone110.9	

9.HELICOPTERS

FAA N#	T Y	MAKE/ MODEL	BASE	AVAIL	START	REMARKS	FAA N#	T Y	MAKE/ MODEL	BASE	AVAIL	START	REMARKS
7HE	3	AS350B3	TA49	0800	0830	Not Assigned Forest IA Ship	Guard (Lobo 29)	1	UH60	Santa Fe (SAF)	---	---	Bucket / ANG Base
473CH	1	CH-47D	Santa Fe (SAF)	0800	0830	Bucket / ANG Base	Guard (Lobo 31)	1	UH60	Santa Fe (SAF)	0800	0800	Bucket / ANG Base
Guard (Lobo 18)	1	UH60	Santa Fe (SAF)	0800	0830	Bucket / ANG Base							

CERRO PELADO FIRE LIAISON CONTACT INFORMATION

Paul Stevens – LOFR (Lead) 252-216-6316 npsobxranger@yahoo.com
Stephanie Allison – LOFR(t) 662-763-8374 stephanie.allison@usda.gov
Rhea Whalen – LOFR(t) 843-412-3571 rhea.whalen@usda.gov

CERRO PELADO FIRE INFORMATION

<https://inciweb.nwcg.gov/incident/8075/>

<https://www.facebook.com/2022.cerropeladofire>

<https://twitter.com/SantaFeNF>

Phone-505-312-4590

We are looking for pictures of the Fire especially those of firefighters and equipment in action, structure protection and scenic shots of the fire. Please mail to 2022.CerroPelado@firenet.gov

**Cerro Pelado Fire
Human Resource Message
April 26, 2022**

ATTITUDE

Attitude is more important than facts.

It is more important than the past, than education, than money, than circumstances, than failures, than successes, than what other people think or say or do.

It is more important than appearance, giftedness or skill.

It will make or break a company...a church...a home.

The remarkable thing is we have choice every day regarding the attitude we will embrace for that day.

We cannot change the inevitable.

The only thing we can do is play on the one string we have, and that is our attitude.

Janine Summy, Human Resource Specialist, 509-429-1206

“Whatever you are, be a good one.” -Abraham Lincoln

CERRO PELADO FIRE

Finance Process

Please email all documents that pertain to your assignment to the Cerro Pelado inbox.

2022.cerropelado.finance@firenet.gov

Use the following format on the email subject line:

(Example: TIME/O-200/SBear/Safety)

If you are unable to submit your crew time reports (CTRs) and shift tickets (STs) electronically, please drop them in the CTR/ST box at morning briefing.

Required Financial Documents:

Agency Overhead	Agency ADs / EFFs	VIPR Resources	Contract / Agency Crews	Cooperators
Resource Order Signed CTRs	Resource Order Casual Hire Form Signed CTRs	Resource Order VIPR Agreement Schedule of Items Inspections Signed STs	Resource Order Manifest Agreement / Contract Schedule of Items Inspections Signed CTRs	Resource Order Agreement Signed STs /CTRs

NOTE:

The fire P-CODE will not be up and running until Wednesday for USFS employees. If required to send in payroll before Wednesday, just make a correction after Wednesday.

IAP

Cerro Pelado
NM-SNF-000049
4/26/22 Day

4,688 acres at 04/24/2020 1611

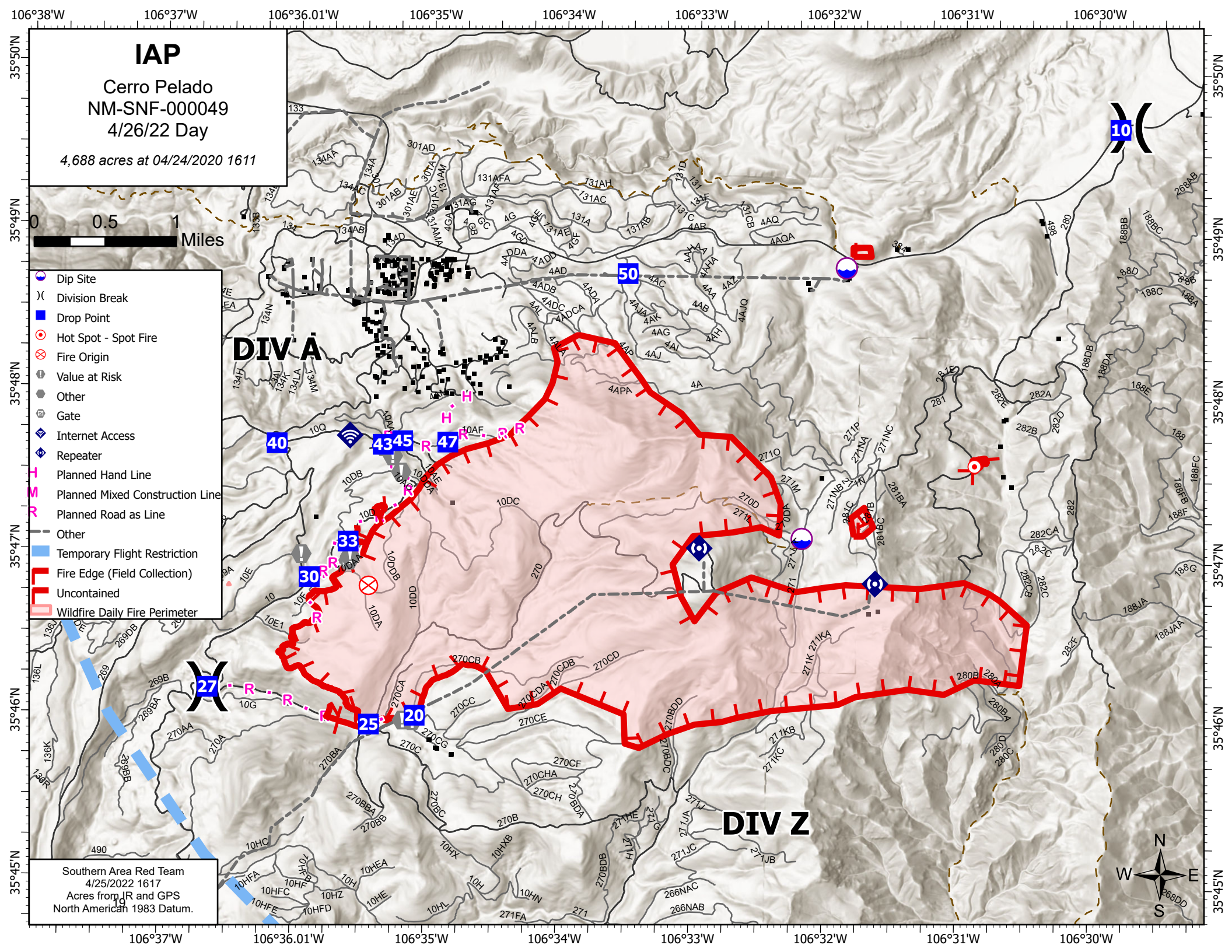


- Dip Site
- Division Break
- Drop Point
- Hot Spot - Spot Fire
- Fire Origin
- Value at Risk
- Other
- Gate
- Internet Access
- Repeater
- Planned Hand Line
- Planned Mixed Construction Line
- Planned Road as Line
- Other
- Temporary Flight Restriction
- Fire Edge (Field Collection)
- Uncontained
- Wildfire Daily Fire Perimeter

DIV A

DIV Z

Southern Area Red Team
4/25/2022 1617
Acres from IR and GPS
North American 1983 Datum.



MEDICAL PLAN (ICS 206 WF)

Controlled Unclassified Information//Basic

1. Incident/Project Name				2. Operational Period						
Cerro Pelado Fire				04/26-27/2022 0700-1900						
2. Medical Aid Stations										
Medical Aid Stations		Location			Advanced Life Support (ALS)					
TBD					Yes		No			
3. Ambulance Services										
For local 911 resources, call Sandoval County Dispatch (505) 896-7300										
Name		Location		Phone		Advanced Life Support (ALS)				
MED 30 (4WD)		Division A		Contact Communications		X				
Jemez Pueblo Ambulance Service		4535 NM 4, Jemez Pueblo, NM		See above		X				
MED 31		550 Zia Pueblo Road, NM		See above		X				
4. Air Ambulance Services										
Sandoval County Dispatch (505) 896-7300 A/G Frequency VMed28 155.34 Tx Tone 156.7										
Name		Location			Advanced Life Support (ALS)					
Classic Air Medical		Los Alamos – Night Vision			X		No			
Tri-State Care Flight		Santa Fe – Night Vision			X		No			
UNM Lifeguard		Albuquerque – Night Vision			X		No			
Bernalillo County Sheriff 505-798-7000		A-Star: Day short haul, 24-hour extrication/relocation			X		No			
5. Hospitals										
Name/Address		GPS Datum – WGS 84 Coordinate Standard		Travel Time Air Gnd		Phone		Helipad Yes No		Level of Care Facility
Los Alamos Medical Center 3917 West Road Los Alamos, NM		Lat:	35 52.91' N	30 min	2 hr	(505) 231-2602 Supv (505) 662-4201		X		Level 3 Trauma
		Long:	106 19.13' W							
		VHF:								
University of New Mexico 2211 Lomas Blvd. NE Albuquerque, NM		Lat:	35 05.27' N	30 min	2 hrs	(505) 272-2111		X		Level 1 Trauma Burn Stabilization
		Long:	106 37.11' W							
		VHF:								
Christus St. Vincent Medical Center 455 St. Michael's Drive Santa Fe NM		Lat:	35 39.56' N	30 min	2 hrs	(505) 913-3361		X		Level 3 Trauma
		Long:	105 56.73' W							
		VHF:								
University of Colorado 12605 E. 16th Avenue, 3rd floor, Aurora, CO		Lat:	39 44.56' N	3.5 hrs	7 hrs	(844) 285-4555		X		Burn Center
		Long:	104 50.52' W							
		VHF:								
6. Clinics										
Trinity Urgent Care 1460 Trinity Dr Los Alamos, NM		Open 0900-1845 Every Day (505) 412-6033								

IWI IC Responsibilities:

- Take charge of the scene – inform the Division Supervisor and Communications that you are the IWI IC and establish radio communications(frequencies, channels). Identify the emergency name – Division A medical, etc.
- Assign or begin patient assessment (Medical Incident Report - MIR) and first aid. Request additional medical resources on division/branch or across incident. Transmit MIR patient information to Communications.
- Determine patient transportation through consultation with line medical personnel and Medical Unit Leader. Consider transportation time, risk to personnel, destination facility and available operational resources. If air transport is chosen, implement the plan for alternative transportation in the event aircraft cannot complete the mission. Order transportation resources through Communications as early as possible.
- Notify Communications as resources arrive and any patient status changes. Names of injured or deceased individuals will not be transmitted on the radio.
- Initiate documentation for future investigation; if a line safety officer is available, assign them to lead documentation. Do not move deceased individuals, gear or personal effects except to accomplish rescue work or protect the safety of others. Obtain written documentation of witnesses. The Unit Log, ICS 214, may be used for the initial documentation, but a subsequent narrative will be required.
- As appropriate, conduct an After Action Review to determine successes, areas to improve and lessons learned.

MEDICAL PLAN (ICS 206 WF)

Controlled Unclassified Information//Basic

7. Division Branch Group	Area Location Capability		
Div A	EMS Responders & Capability:	REMS-1 (ALS), Med 30 Ambulance (ALS) Medic Team 1 (ALS) - Cody Keller 479-409-9439	
	ETA for Ambulance to Scene:		
	Air:	40 min.	
	Ground:	1 hr.	
Div I	EMS Responders & Capability:		
	ETA for Ambulance to Scene:		
	Air:	40 min.	
	Ground:	1 hr.	
Div R	EMS Responders & Capability:		
	ETA for Ambulance to Scene:		
	Air:	40 min.	
	Ground:	1 hr.	
Div Z	EMS Responders & Capability:	Medic Team 2 (ALS) - Dean Carpenter 479-236-1174	
	ETA for Ambulance to Scene:		
	Air:	40 min.	
	Ground:	1 hr.	
Structure	EMS Responders & Capability:		
	ETA for Ambulance to Scene:		
	Air:	40 min.	
	Ground:	1 hr.	
Div A/Z Night	EMS Responders & Capability:		
	ETA for Ambulance to Scene:		
	Air:	40 min.	
	Ground:	1 hr.	
ICP (Jemez Springs Ranger Station)	EMS Responders & Capability:	Fred Adler (EMT), Nick Arnett (EMTF)	
	Equipment Available on Scene:	BLS	
	Medical Emergency #:	(479) 238-6064 or (408) 888-1900	
	ETA for Ambulance to Scene:		
	Air:	20 min	
	Ground:	30 min	
8. Prepared By (Medical Unit Leader)		9. Date/Time	10. Reviewed By (Safety Officer)
Fred Adler, MEDL, Nick Arnett MEDL(t)		4/25/2022 1900	Tony Rivers SOFR 4/25/2022 1900

MEDICAL PLAN (ICS 206 WF)

Controlled Unclassified Information//Basic

Medical Incident Report

FOR A NON-EMERGENCY INCIDENT, WORK THROUGH CHAIN OF COMMAND TO REPORT AND TRANSPORT INJURED PERSONNEL AS NECESSARY.

FOR A MEDICAL EMERGENCY: IDENTIFY ON SCENE INCIDENT COMMANDER BY NAME AND POSITION AND ANNOUNCE "MEDICAL EMERGENCY" TO INITIATE RESPONSE FROM IMT COMMUNICATIONS/DISPATCH.

Use the following items to communicate situation to communications/dispatch.

1. CONTACT COMMUNICATIONS / DISPATCH (Verify correct frequency prior to starting report)

Ex: "Communications, Div. Alpha. Stand-by for Emergency Traffic."

2. INCIDENT STATUS: Provide incident summary (including number of patients) and command structure.

Ex: "Communications, I have a Red priority patient, unconscious, struck by a falling tree. Requesting air ambulance to Forest Road 1 at (Lat./Long.) This will be the Trout Meadow Medical, IC is TFLD Jones. EMT Smith is providing medical care."

Severity of Emergency / Transport Priority	<input type="checkbox"/> RED / PRIORITY 1 Life or limb threatening injury or illness. Evacuation need is IMMEDIATE <i>Ex: Unconscious, difficulty breathing, bleeding severely, 2^o – 3^o burns more than 4 palm sizes, heat stroke, disoriented.</i> <input type="checkbox"/> YELLOW / PRIORITY 2 Serious Injury or illness. Evacuation may be DELAYED if necessary. <i>Ex: Significant trauma, unable to walk, 2^o – 3^o burns not more than 1-3 palm sizes.</i> <input type="checkbox"/> GREEN / PRIORITY 3 Minor Injury or illness. Non-Emergency transport <i>Ex: Sprains, strains, minor heat-related illness.</i>	
Nature of Injury or Illness & Mechanism of Injury		<i>Brief Summary of Injury or Illness (Ex: Unconscious, Struck by Falling Tree)</i>
Transport Request		<i>Air Ambulance / Short Haul/Hoist Ground Ambulance / Other</i>
Patient Location		<i>Descriptive Location & Lat. / Long. (WGS84)</i>
Incident Name		<i>Geographic Name + "Medical" (Ex: Trout Meadow Medical)</i>
On-Scene Incident Commander		<i>Name of on-scene IC of Incident within an Incident (Ex: TFLD Jones)</i>
Patient Care		<i>Name of Care Provider (Ex: EMT Smith)</i>

3. INITIAL PATIENT ASSESSMENT: Complete this section for each patient as applicable (start with the most severe patient)

Patient Assessment: See IRPG page 106

Treatment:

4. TRANSPORT PLAN:

Evacuation Location (if different): (Descriptive Location (drop point, intersection, etc.) or Lat. / Long.) Patient's ETA to Evacuation Location:

Helispot / Extraction Site Size and Hazards:

5. ADDITIONAL RESOURCES / EQUIPMENT NEEDS:

Example: Paramedic/EMT, Crews, Immobilization Devices, AED, Oxygen, Trauma Bag, IV/Fluid(s), Splints, Rope rescue, Wheeled litter, HAZMAT, Extrication

6. COMMUNICATIONS: Identify State Air/Ground EMS Frequencies and Hospital Contacts as applicable

Function	Channel Name/Number	Receive (RX)	Tone/NAC *	Transmit (TX)	Tone/NAC *
COMMAND					
AIR-TO-GRND					
TACTICAL					

7. CONTINGENCY: Considerations: If primary options fail, what actions can be implemented in conjunction with primary evacuation method? Be thinking ahead.

8. ADDITIONAL INFORMATION: Updates/Changes, etc.

REMEMBER: Confirm ETA's of resources ordered. Act according to your level of training. Be Alert. Keep Calm. Think Clearly. Act Decisively.