



Cerro Pelado

NM-SNF-000049, P3PK47 (0310)

**Operational Period:
Wednesday, April 27, 2022
0700 – April 28, 2022 0700**

Check - In



Avenza Maps



IAP


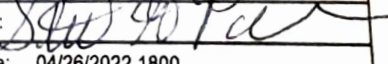


Cerro Pelado Communication Phone
561-527-0804



**SA Red Team
Incident Commander – Steve Parrish**

INCIDENT OBJECTIVES (ICS 202)

1. Incident Name:		2. Operational Period: 0700-0700	
CERRO PELADO		Date/Time From: 04/27/2022 0700 WED	Date/Time To: 04/28/2022 0700 THU
3. Objective(s):			
Management Objectives			
<p>1) Protection of human life and safety is the first priority for all actions taken on a wildfire and can overrule all other strategic/management objectives and incident requirements.</p> <p>2) Base management decisions on meeting objectives while also minimizing the risk of COVID-19 exposures to responders and the public. COVID-19 considerations may alter how you meet goals but should not lead to higher risk tactics.</p> <p>3) Maintain and strengthen relationships with the Santa Fe National Forest, private landowners, the public, cooperators and partners by providing timely and accurate information.</p> <p>4) Protect the unique attributes of impacted watersheds through actions that minimize sedimentation and invasive species movement.</p> <p>5) Protect impact to cultural resources through consultation with local forest specialists.</p>			
Control Objectives			
<p>1) Protection of human life and safety is the first priority for all actions taken and shall override all other incident control objectives. Evaluate risk vs. benefit in strategic and tactical planning and only commit operational resources to actions that have the highest probability of success.</p> <p>2) Keep fire out of Jemez Canyon.</p> <p>3) Keep fire East of Forest Road (FR) 10; Southeast of Community SLP; South of State Route (SR) 4; East of FR's 282 & 280; and North of FR 270.</p> <p>4) Minimize retardant impacts to Jemez Natural Recreation Area.</p> <p>5) Protect values at risk in the Valles Caldera National Preserve including watersheds, visitor and administrative infrastructure, historic structures, cultural resources, and important wildlife habitats.</p> <p>6) Provide initial attack resources to respond to any new ignitions within the TFR area to limit potential size and growth.</p>			
4. Operational Period Command Emphasis:			
***** L C E S *****			
General Situational Awareness:			
<ul style="list-style-type: none"> • Continued low RHs • No predicted precipitation for several days <p><u>WEATHER DISCUSSION:</u> Unusually early start to fire season. Critical to extreme fire weather for the next several days. Entire area is experiencing extended drought. Please see daily weather forecast for detailed report.</p>			
7. Prepared by:	MARG OLSON	Position/Title:	PLANNING SECTION CHIEF
Signature:			
8. Approved by Incident Commander:	Name:	STEVE PARRISH	Signature:
Signature:			
ICS 202	IAP Page	Date/Time:	04/26/2022 1800

FINAL

Page 1 of 2

ORGANIZATION ASSIGNMENT LIST (ICS 203)

1. Incident Name:		2. Operational Period: 0700-0700	
CERRO PELADO		Date/Time From: 04/27/2022 0700 WED	Date/Time To: 04/28/2022 0700 THU
3. Incident Commander(s) and Command Staff:		FACILITIES UNIT	ADAMS, SUSANNE
IC/UC	PARRISH, STEVE G	GROUND SUPPORT UNIT	JOHNSON, ROBERT MIKE POST
DEPUTY	PEARSON, PAT	COMMUNICATIONS UNIT	STEARNS, BARRY RADZIVILL, DAVID (T)
SAFETY OFFICER	RIVERS, TONY; HAWKINS, TOMMY LIDDELL, BRAD; STONE, DAVID	MEDICAL UNIT	ADLER, FRED ARNETT, NICK
INFORMATION OFFICER	HIBBARD, CATHERINE; AURIEMMO, LESLIE ENGLE, JASON (T)	SECURITY UNIT	BRADFORD, KAREN L
LIAISON OFFICER	STEVENS, PAUL; ALLISON, STEPHANIE (T) WHALEN, RHEA (T)	FOOD UNIT	LOWE, JAMES
4. Agency/Organization Representative(s):		7. Operations Section:	
Agency/Organization	Name	OPS SECTION CHIEF	MYERS, PETER DAVIS, MIKE
USFS SANTA FE	CRESS, DEBBIE; MARSHALL, JEREMY; ELMORE, LANCE (FMO)	PLANNING OPS	EDGE, VICK; COOK, CHAD (T)
NEW MEXICO FORESTRY DIVISION	CRANE, LAWRENCE	Branch I	
NPS VALLES CALDERA	SILVA-BANUELOS, JORGE	BRANCH DIRECTOR	MORTON, HEATH
NPS BANDELIER	RODGERS, MARLA THIVENER, JUSTIN	DIVISION/GROUP	A BURGETT, JOEL MCKINNON, BLAINE
TRIBAL LIAISON	MONTES, REUBEN	DIVISION/GROUP	M UNSTAFFED
LOS ALAMOS NATIONAL LABORATORY	NIETO, RICH	DIVISION/GROUP	Z PASCARELLA, ANDY
5. Planning Section:		DIVISION/GROUP	R ALVES, FRANK
CHIEF	FORDER, MISSY; OLSON, MARG	DIVISION/GROUP	STRUCTURE ROBERTSON, CRAIG
RESOURCES UNIT	PHILLIPS, BRITTANY B SOBIESKI, SUE (VIRTUAL) (T)	Branch II	
SITUATION UNIT	KETT, SUSAN R	BRANCH DIRECTOR	TAYLOR, CORDELL
DEMOBILIZATION UNIT	THOMAS, DONNA L	DIVISION/GROUP	A/Z NIGHT EDWARDS, AARON
FIRE BEHAVIOR ANALYST	WARD, MIKE	7b. Air Operations Branch:	
HUMAN RESOURCE SPECIALIST	SUMMY, JANINE	AIR OPS BRANCH DIRECTOR	HOWARD, LYNN
TRAINING SPECIALIST	RICHARD RIVELLE	AIR SUPPORT SUPERVISOR	MASON, JOHN
GIS SPECIALIST	BARNES, TOMMY	HELIBASE MANAGER	BRIAN KLEISEN
TECHNOLOGY SUPPORT SPECIALIST	FARMER, TONY; PADDOCK, BRIAN WEBB, KELLY (T)	8. Finance/Administration Section:	
INCIDENT METEOROLOGIST	STEARNS, SCOTT	CHIEF	MEREDITH, JAMES M WARNER, JOHN R
DOCUMENTATION UNIT		TIME UNIT	WINKLER, KIMBERLY
READ	SILVA, ANDRE; PITTENGER, DAVE; BAIDEN, BECKY THOMPSON, LISA	PROCUREMENT UNIT	PELCH, GEMAA
6. Logistics Section:		COMPENSATION UNIT	LOWDER, DIANE
CHIEF	REVELS, CHRIS; ARTEAGA, JANE	COST UNIT	TRAVIS, DIANE
SUPPLY UNIT	PIPER, TOM		
9. Prepared By:	Name: MARG OLSON	Position/Title: PLANNING SECTION CHIEF	Signature:
ICS 203	IAP Page	Date/Time: 04/26/2022 1800	



To: All Incident Personnel, Cerro Pelado Fire

As Southern Area National Type I Incident Commander, I am committed to a policy of “zero tolerance” of inappropriate behavior during incident operations. Any form of harassment, discriminatory practices, or disrespectful behavior will not be tolerated. Known or reported acts will be dealt with appropriately.

I am particularly concerned about the perception that alcohol has a place in any of the Incident facilities. It is not appropriate to indulge in alcoholic beverages during any fire assignment.

The National Team from the Southern Region has a policy of “NO ALCOHOL” from the time of dispatch until the time of physical release from the Incident. Members of the Team voluntarily comply with this policy; all incident personnel will be expected to do so also.

We endorse, support, and expect an attitude of mutual respect for all Incident personnel and the public we serve. We also, endorse the attitude and work ethic that places “Safety First, every time on every Incident.” We expect nothing less.

/s/Steve Parrish

Incident Commander

SAIMT 1



INCIDENT Weather Forecast



Forecast No: 4
Prediction For: Wednesday
Shift Date: April 27, 2022
Forecast Issued: April 26, 2022 at 1800

Name of Incident: Cerro Pelado Fire
Unit: Santa Fe NF
Incident Meteorologist: Scott Stearns
 (208) 577-1617

Discussion: Winds aloft become more southwesterly today, and will start to push low level moisture east. The clash of dry air from the west with our relatively moist air will increase potential for thunderstorms in the area. Best chances for that activity will be early afternoon through late evening and any storms may be dry or a mix of dry and wet with gusty and erratic winds likely. On Thursday, slightly above normal temperatures will combine with dry, southwest winds.

Forecast for Today:

Sky/Weather: Decreasing morning clouds followed by chances for thunderstorms with gusty and erratic winds

	<u>Jemez Springs 8,000'</u>			<u>Cerro Pelado Pk 9,400'</u>		
Max Temperature:		70			64	°F
Min RH:		17			19	%
Wind (20 FT):	Inversion breaking around 0900. Strongest gusts are expected early to mid afternoon.					
...	SW	11		SSW	13	mph
...	Gusts:	23		Gusts:	28	mph
Haines Index:		5			5	
LAL:		3			3	
Chance of Precipitation:		30			45	%
Tonight's Min Temperature:		40			32	°F
Tonight's Max RH:		30			30	%
Tonight's Wind (20 FT):	Strong inversion setting in around 2000. Winds becoming lighter before sunrise.					
...	DS/DV	5		SW	7	mph
...	Gusts:	15		Gusts:	20	mph
Tonight's Haines Index:		6			6	
Tonight's LAL:		2			3	
Tonight's Chnc of Precip:		20			40	%

Forecast for Thursday:

Sky/Weather: Mostly sunny

	<u>Jemez Springs 8,000'</u>			<u>Cerro Pelado Pk 9,400'</u>		
Max / Min Temperature:	72	40		65	35	°F
Min / Max RH:	9	35		11	35	%
Wind (20 FT):	Inversion breaking between 0900 and 1000.					
...	SW	8		WSW	11	mph
...	Gusts:	20		Gusts:	25	mph
Haines Index:	6		LAL: 1	Precip Chance:	0	



Extended Outlook:

Winds strengthen Friday ahead of a cold front, continuing the fetch of dry air and leading to likely critiical conditions across the region. Saturday, a brief ridge of high pressure allows warm and dry conditions, but winds will relax. Sunday brings another day of potential windy conditions.

		<u>Max T</u>	<u>Min T</u>	<u>Min RH</u>	<u>Max RH</u>	<u>Ridge Winds @ 1500</u>	<u>Weather</u>
8,600'	Fri:	64	35	10	30	WNW @ 20 G35	Critical Fire Weather
	Sat:	66	36	8	30	W @ 11 G23	
	Sun:	69	39	9	30	SW @ 12 G25	

FIRE BEHAVIOR FORECAST

FORECAST NUMBER: 04	TYPE OF FIRE: Wildland, Type 1
FIRE NAME: Cerro Pelado	OPERATIONAL PERIOD: Day Shift
DATE ISSUED: 4/26/22 TIME ISSUED: 1800	SHIFT DATE: Tuesday, April 27, 2022
UNIT: Santa Fe NF	SIGNED: Mike Ward, FBAN (t)

WEATHER SUMMARY:	Fire Environment & Danger Information	
<p>Local Thresholds – Watch Outs Min RH < 15%, Winds > 30 mph</p> <p><u>Today’s Significant Fire Weather:</u></p> <p>Gusty/Erratic Winds from T-Storms, LAL of 3, and Haines Index of 5-6.</p>	 SNF West Pocket Card	 SWCC Fire Danger Page

FIRE BEHAVIOR:

GENERAL:

Although weather conditions have moderated active fire behavior is expected today on all sides of the fire.

Current Fire Environment Conditions:

Fine Dead Fuel Moisture = 5%, 1,000 Hour Fuel Moisture = 11%, Live Shrub Moisture = 82%
ERC’s remain around the 90th percentile @ Jemez RAWs, but at or near maximum value for this date.

Fire Behavior based on MAXIMUM values for the fuel models shown, exposed fuels on steep slope.

Fuel Model	Rate of Spread	Flame Length
Grass/Shrub	6-14 chains/hour	2-4 feet
Timber	6-16 chains/hour	7-10 feet

Spotting from ridge top torching trees up to **0.4 mile during wind gusts**. Probability of Ignition = **61%**
In **one hour** new spot fires or ignitions can reach **7 acres**.

Specific Areas of Concern:

Alpha – With southerly winds today expect the fire to move to the north. Fuels treatments in this area will reduce fire behavior as the fire is pushed in this area. On the eastern side of the division the fire will be pushed north into the burn scars from the Cajete Fire (2017) and the Las Conchas Fire (2011) and up the Paliza Canyon.

Romeo – South winds will align with up canyon winds which will feed backing and flanking fire in the drainage and unburned areas east and west. Passing t-storms may influence local wind directions in more complex topography. South winds should reduce fire spread

Zulu – Minimal to moderate fire behavior due to the continuity of fuels. Large heavy fuels continue to burn in this area. Wind alignment with San Juan Canyon may influence surface wind speeds and directions.

AIR OPERATIONS:

Mostly sunny skies with some wind gusts, but a good day for aviation operations. Moderate smoke production at times may cause limited visibility.

SAFETY:

Fire Order # 2: Know what your fire is doing at all times. Wind alignment with slope and drainages can create significant increases in windspeed and fire spread.


Michael D. Ward

Send any fire behavior observations or photos to: Michael.d.ward@usda.gov, 470-446-2247



HEALTH AND SAFETY MESSAGE

“We don’t plan on luck to be safe, we plan on good risk management and good decisions”....the Red Team

INCIDENT: Cerro Pelado	DATE: Wednesday, April 27 th , 2022
Major Hazards and Risks: Thunderstorms, Hazard Trees, Mission Creep	
<p>Storms - Thunderstorms are possible today and they may contain strong and gusty, erratic wind. Pay attention to the Cerro Pelado weather forecast and watch for erratic and gusty winds. If lightning occurs, take shelter, review your IRPG.</p> <p>Hazard Trees - Don’t be complacent if you are in the same area that you worked previously. Time and wind can change a trees’ status tremendously. What may have been a solid tree yesterday, might be a weakened tree ready to fall today. Inspect the area carefully whether you have been in the area before or it is your first shift.</p> <p>Mission Creep: If you are questioning what you are doing, Maybe you shouldn’t do it at all. Don’t hesitate to ask the tough questions and view the big picture.</p> <p style="text-align: center;">“Make It A Safe Day”</p>	
 <p>Storms can develop with little warning</p>	<p style="text-align: center;">Hazardous Attitudes</p> <p>Invincible - This can’t happen to us Macho - Trying to impress/prove Impulsive Group Think - Afraid to speak up</p>

Red Tam Safety Officers: Tony Rivers, Tommy Hawkins, Brad Lidell, Dave Stone

Division/Group Assignment List (ICS 204 WF)
Controlled Unclassified Information//Basic

1. Incident Name:			3.			
CERRO PELADO			Branch:		Division/Group	
2. Operational Period: 0700-0700			I		A	
Date/Time From: 04/27/2022 0700	WED	Date/Time To: 04/28/2022 0700	THU			
4. Operations Personnel						
OPERATIONS CHIEF		PETE MYERS, MIKE DAVIS VICKY EDGE, CHAD COOK (T)		BRANCH DIRECTOR	HEATH MORTON	
DIVISION/GROUP SUPERVISOR		JOEL BURGETT BLAINE MCKINNON				
5. Resources Assigned this Period						
Strike Team / Task Force / Resource Designator	LWD	Leader	Number Persons	Drop Off PT./Time	Pick Up PT./Time	
C-1 T2IA CALIFORNIA 63	05/07	RAY BATRES	20	JFC/0700	JFC/1900	
C-8 T2IA GRAYBACK	04/28	TIM BREWER	20	JFC/0700	JFC/1900	
C-2 T2 LAVA RIVER	05/07	WILL CONTERAS	20	JFC/0700	JFC/1900	
C-9 T2- ROCHA	05/08	JORGE DURAN	20	JFC/0700	JFC/1900	
C-13 T2 MOUNTAINEER CONTRACTING	05/09	JUAN PEREZ	20	JFC/0700	JFC/1900	
E-123 NM MODULE 6		NATT HEFFLER	4	JFC/0700	JFC/1900	
E-129 ENG3 ENGINE1441 NM-BLM	05/06	FORREST PETERMAN	3	JFC/0700	JFC/1900	
E-5 ENG3 STONE MOUNTAIN PROTECTION	05/06	JOHN DICKERSON	4	JFC/0700	JFC/1900	
E-109 ENG4 ARROW FIRE & LAND MANAGEMENT	05/09	STEVE MARROW	3	JFC/0700	JFC/1900	
ENGINE 431 ENG4 SNF		JOE SOUKUP	5	JFC/0700	JFC/1900	
ENGINE 2601 ENG6 MT-BLM		JEFF AUGBUGER	4	JFC/0700	JFC/1900	
LA-6 ENG6		SHRIVER	3	JFC/0700	JFC/1900	
LA-7 ENG6		LIEMER	3	JFC/0700	JFC/1900	
O-8.8 SOF1	05/06	TOMMY HAWKINS	1	JFC/0700	JFC/1900	
LA WTT2 T-1		CROCKETT	2	JFC/0700	JFC/1900	
E-128 LA UTV TYPE 7			2	JFC/0700	JFC/1900	
O-140 MED 1	05/09	DEAN CARPENTER	2	JFC/0700	JFC/1900	
6. Control Operations/Work Assignments:						
8. Division/Group Communication Summary						
Function	Channel	RX Frequency N/W	RX Tone/NAC	TX Frequency N/W	TX Tone/NAC	Mode
COMMAND	1	169.7500 N	146.2	167.1000 N	146.2	A
COMMAND	2	169.5375 N	146.2	164.7125 N	146.2	A
COMMAND	11	172.3000 N		165.0125 N		A
TACTICAL	5	168.0500 N	146.2	168.0500 N	146.2	A
AIR TO GROUND	12	168.3125 N		168.3125 N		A
9. Prepared By (Resource Unit Leader)		Approved By (Planning Section Chief)		Date	Time	
BRITTANY PHILLIPS		MISSY FORDER		04/26/2022	1800	

Division/Group Assignment List (ICS 204 WF)

Controlled Unclassified Information//Basic

1. Incident Name:				3.			
CERRO PELADO				I		A	
2. Operational Period: 0700-0700							
Date/Time From: 04/27/2022 0700 WED		Date/Time To: 04/28/2022 0700 THU					
4. Operations Personnel							
OPERATIONS CHIEF		PETE MYERS, MIKE DAVIS VICKY EDGE, CHAD COOK (T)		BRANCH DIRECTOR		HEATH MORTON	
DIVISION/GROUP SUPERVISOR		JOEL BURGETT BLAINE MCKINNON					
6. Control Operations/Work Assignments:							
<p>Task: Continue to provide engine resource presence for the Community SLP, and improve control lines near SLP structures. Hold and improve handline from the Community SLP to the 10 Q, 10 A, and 10 DB area towards DP 30.</p> <p>Purpose: To reduce the fire threat to the Community SLP, and keep fire progression East of FS-10.</p> <p>End State: Lift evacuations and return residents to community.</p>							
7. Special Instructions:							
<ul style="list-style-type: none"> Briefing will be held at Jemez Falls Campground 0700. Coordinate with READ before ground disturbance. Coordinate with Sandoval County, State Police, and Tribal Nations Identify impassable roads. With GPS locations in Field Map. Do not post photos with Archaeological resources that have location information. Leave all gates as you found them, either opened or closed. If the gate was closed when you arrived, close it as you leave. Identify IA resources off each division to support IA under TFR. ** IN THE EVENT OF AN IWI: CONTACT COMMUNICATIONS ON COMMAND 							
8. Division/Group Communication Summary							
Function	Channel	RX Frequency N/W	RX Tone/NAC	TX Frequency N/W	TX Tone/NAC	Mode	
COMMAND	1	169.7500 N	146.2	167.1000 N	146.2	A	
COMMAND	2	169.5375 N	146.2	164.7125 N	146.2	A	
COMMAND	11	172.3000 N		165.0125 N		A	
TACTICAL	5	168.0500 N	146.2	168.0500 N	146.2	A	
AIR TO GROUND	12	168.3125 N		168.3125 N		A	
9. Prepared By (Resource Unit Leader)			Approved By (Planning Section Chief)			Date	Time
BRITTANY PHILLIPS			MISSY FORDER			04/26/2022	1800

Division/Group Assignment List (ICS 204 WF)
Controlled Unclassified Information//Basic

1. Incident Name:			3.			
CERRO PELADO			Branch:		Division/Group	
2. Operational Period: 0700-0700			I		R	
Date/Time From: 04/27/2022 0700	WED	Date/Time To: 04/28/2022 0700				
4. Operations Personnel						
OPERATIONS CHIEF		PETE MYERS, MIK DAVIS VICKY EDGE, CHAD COOK (T)		BRANCH DIRECTOR		HEATH MORTON
DIVISION/GROUP SUPERVISOR		FRANK ALVES				
5. Resources Assigned this Period						
Strike Team / Task Force / Resource Designator	LWD	Leader	Number Persons	Drop Off PT./Time	Pick Up PT./Time	
C-7 T1 MORMON LAKE IHC	05/08	SARA SWEENEY	21	JFC/0700	JFC/1900	
C-14 T2IA TAYLOR	05/08	VERNON JACKSON	19	JFC/0700	JFC/1900	
E-106 ENG6 GREY WILDLAND	05/09	JAKE WARDEN	3	JFC/0700	JFC/1900	
E-103 DOZ2 WEAVER GRADING	05/09	KEVIN GAINES	2	JFC/0700	JFC/1900	
O-17 REAF	05/07	BECKY BAISDEN	1	JFC/0700	JFC/1900	
O-117 REAF	05/08	LISA THOMPSON	1	JFC/0700	JFC/1900	
O-95 SOF1	05/09	BRAD LIDELL	1	JFC/0700	JFC/1900	
O-99 RIMS	05/08	TANNER SMITH	4	JFC/0700	JFC/1900	
6. Control Operations/Work Assignments:						
Task: Identify road system for potential containment lines. Improve exiting roads and construct dozer or hand lines as appropriate to contain fire. Use aviation resources to monitor fire activity in Los Conchas fire footprint.						
Purpose: Keep fire out of private inholdings while lessening fire movement to the South and Southeast						
End State: Lessening the foot print of the Cerro Pelado fire while minimizing the impact to private lands.						
7. Special Instructions:						
<ul style="list-style-type: none"> Briefing will be held at Jemez Falls Campground 0700. Coordinate with READ before ground disturbance. Coordinate with Sandoval County, State Police, and Tribal Nations Identify impassable roads. With GPS locations in Field Map. Do not post photos with Archaeological resources that have location information. Leave all gates as you found them, either opened or closed. If the gate was closed when you arrived, close it as you leave. Identify IA resources off each division to support IA under TFR. 						
8. Division/Group Communication Summary						
Function	Channel	RX Frequency N/W	RX Tone/NAC	TX Frequency N/W	TX Tone/NAC	Mode
COMMAND	2	169.5375 N	146.2	164.7125 N	146.2	A
COMMAND	1	169.7500 N	146.2	167.1000 N	146.2	A
COMMAND	11	172.3000 N		165.0125 N		A
TACTICAL	8	168.2500 N	146.2	168.2500 N	146.2	A
AIR TO GROUND	12	168.3125 N		168.3125 N		A
9. Prepared By (Resource Unit Leader)		Approved By (Planning Section Chief)		Date	Time	
BRITTANY PHILLIPS		MISSY FORDER		04/26/2022	1800	

Division/Group Assignment List (ICS 204 WF)

Controlled Unclassified Information//Basic

1. Incident Name:		3.	
CERRO PELADO		I	R
2. Operational Period: 0700-0700			
Date/Time From: 04/27/2022 0700 WED	Date/Time To: 04/28/2022 0700 THU		
4. Operations Personnel			
OPERATIONS CHIEF	PETE MYERS, MIK DAVIS VICKY EDGE, CHAD COOK (T)	BRANCH DIRECTOR	HEATH MORTON
DIVISION/GROUP SUPERVISOR	FRANK ALVES		

7. Special Instructions:

- ** IN THE EVENT OF AN IWI: CONTACT COMMUNICATIONS ON COMMAND

8. Division/Group Communication Summary						
---	--	--	--	--	--	--

Function	Channel	RX Frequency N/W	RX Tone/NAC	TX Frequency N/W	TX Tone/NAC	Mode
COMMAND	2	169.5375 N	146.2	164.7125 N	146.2	A
COMMAND	1	169.7500 N	146.2	167.1000 N	146.2	A
COMMAND	11	172.3000 N		165.0125 N		A
TACTICAL	8	168.2500 N	146.2	168.2500 N	146.2	A
AIR TO GROUND	12	168.3125 N		168.3125 N		A

9. Prepared By (Resource Unit Leader) BRITTANY PHILLIPS	Approved By (Planning Section Chief) MISSY FORDER	Date 04/26/2022	Time 1800
---	---	---------------------------	---------------------

Division/Group Assignment List (ICS 204 WF)

Controlled Unclassified Information//Basic

1. Incident Name:				3.		
CERRO PELADO				I	Z	
2. Operational Period: 0700-0700						
Date/Time From: 04/27/2022 0700 WED		Date/Time To: 04/28/2022 0700 THU				
4. Operations Personnel						
OPERATIONS CHIEF		PETE MYERS, MIKE DAVIS VICKY EDGE, CHAD COOK (T)		BRANCH DIRECTOR		HEATH MORTON
DIVISION/GROUP SUPERVISOR		ANDY PASCARELLA				
5. Resources Assigned this Period						
Strike Team / Task Force / Resource Designator		LWD	Leader	Number Persons	Drop Off PT./Time	Pick Up PT./Time
C-12 T2 BIRRUETA		05/08	CRISTIAN JUAREZ	20	JFC/0700	JFC/1900
ENGINE 304 ENG3			MUNRO	3	JFC/0700	JFC/1900
E-111 ENG3 MISSOULA CITY FIRE DEPT		05/09	RANDAL THORPE	3	JFC/0700	JFC/1900
E-2 ENG6 DEBEQUE		05/08	VOORHEES	2	JFC/0700	JFC/1900
E-105 ENG6 - RAMOS EAGLE		05/08	CORBIN LESTER	3	JFC/0700	JFC/1900
E-142 ENG6 MT-BDF		05/10	GORDON WEGLEY	4	JFC/0700	JFC/1900
LA T-5 WTT2			AUSTIN	2	JFC/0700	JFC/1900
E-114 WTT2		05/08	WYATT LACKMAN	2	JFC/0700	JFC/1900
LA WTT2			TBD		JFC/0700	JFC/1900
O-96 SOF1			DAVE STONE	1	JFC/0700	JFC/1900
E-59 AMBU				2	JFC/0700	JFC/1900
MED 2				2	JFC/0700	JFC/1900
6. Control Operations/Work Assignments:						
Task: Identify opportunities for containment lines along FS 270C network and East of FS 10.						
Purpose: Hold fire North of FS 270, FS 270 C network, and East of FS 10.						
End State: Hold fire within the identified road system to minimize impact on landscape.						
7. Special Instructions:						
<ul style="list-style-type: none"> Briefing will be held at Jemez Falls Campground 0700. Coordinate with READ before ground disturbance. Coordinate with Sandoval County, State Police, and Tribal Nations 						
8. Division/Group Communication Summary						
Function	Channel	RX Frequency N/W	RX Tone/NAC	TX Frequency N/W	TX Tone/NAC	Mode
COMMAND	2	169.5375 N	146.2	164.7125 N	146.2	A
COMMAND	1	169.7500 N	146.2	167.1000 N	146.2	A
COMMAND	11	172.3000 N		165.0125 N		A
TACTICAL	6	168.2000 N	146.2	168.2000 N	146.2	A
AIR TO GROUND	12	168.3125 N		168.3125 N		A
9. Prepared By (Resource Unit Leader)			Approved By (Planning Section Chief)		Date	Time
BRITTANY PHILLIPS			MISSY FORDER		04/26/2022	1800

Division/Group Assignment List (ICS 204 WF)

Controlled Unclassified Information//Basic

1. Incident Name:		3.	
CERRO PELADO		I	Z
2. Operational Period: 0700-0700			
Date/Time From: 04/27/2022 0700	WED	Date/Time To: 04/28/2022 0700	THU
4. Operations Personnel			
OPERATIONS CHIEF	PETE MYERS, MIKE DAVIS VICKY EDGE, CHAD COOK (T)	BRANCH DIRECTOR	HEATH MORTON
DIVISION/GROUP SUPERVISOR	ANDY PASCARELLA		

7. Special Instructions:

- Identify impassable roads. With GPS locations in Field Map.
- Do not post photos with Archaeological resources that have location information.
- Leave all gates as you found them, either opened or closed. If the gate was closed when you arrived, close it as you leave.
- Identify IA resources off each division to support IA under TFR.
- ** IN THE EVENT OF AN IWI: CONTACT COMMUNICATIONS ON COMMAND**

8. Division/Group Communication Summary						
Function	Channel	RX Frequency N/W	RX Tone/NAC	TX Frequency N/W	TX Tone/NAC	Mode
COMMAND	2	169.5375 N	146.2	164.7125 N	146.2	A
COMMAND	1	169.7500 N	146.2	167.1000 N	146.2	A
COMMAND	11	172.3000 N		165.0125 N		A
TACTICAL	6	168.2000 N	146.2	168.2000 N	146.2	A
AIR TO GROUND	12	168.3125 N		168.3125 N		A

9. Prepared By (Resource Unit Leader)	Approved By (Planning Section Chief)	Date	Time
BRITTANY PHILLIPS	MISSY FORDER	04/26/2022	1800

Division/Group Assignment List (ICS 204 WF)

Controlled Unclassified Information//Basic

1. Incident Name:			3.			
CERRO PELADO			I	STRUCTURE		
2. Operational Period: 0700-0700						
Date/Time From:	04/27/2022 0700	WED	Date/Time To:	04/28/2022 0700	THU	
4. Operations Personnel						
OPERATIONS CHIEF	PETE MYERS, MIKE DAVIS VICKY EDGE, CHAD COOK (T)		BRANCH DIRECTOR	HEATH MORTON		
DIVISION/GROUP SUPERVISOR	CRAIG ROBERTSON					
5. Resources Assigned this Period						
Strike Team / Task Force / Resource Designator	LWD	Leader	Number Persons	Drop Off PT./Time	Pick Up PT./Time	
TBD						
6. Control Operations/Work Assignments:						
<p>Task: Identify structures threatened by the Cerro Pelado wildfire and develop a structure protection plan in coordination with the local cooperating fire agencies.</p> <p>Purpose: Triage all structures identified for structure protection needs.</p> <p>End State: Threat to identified structures has been reduced as much as practical.</p>						
7. Special Instructions:						
<ul style="list-style-type: none"> Briefing will be held at Jemez Falls Campground 0700. Coordinate with READ before ground disturbance. Coordinate with Sandoval County, State Police, and Tribal Nations Identify impassable roads. With GPS locations in Field Map. Do not post photos with Archaeological resources that have location information. Leave all gates as you found them, either opened or closed. If the gate was closed when you arrived, close it as you leave. Identify IA resources off each division to support IA and TFR. ** IN THE EVENT OF AN IWI: CONTACT COMMUNICATIONS ON COMMAND 						
8. Division/Group Communication Summary						
Function	Channel	RX Frequency N/W	RX Tone/NAC	TX Frequency N/W	TX Tone/NAC	Mode
COMMAND	1	169.7500 N	146.2	167.1000 N	146.2	A
COMMAND	2	169.5375 N	146.2	164.7125 N	146.2	A
COMMAND	11	172.3000 N		165.0125 N		A
TACTICAL	7	168.6000 N	146.2	168.6000 N	146.2	A
AIR TO GROUND	12	168.3125 N		168.3125 N		A
9. Prepared By (Resource Unit Leader)		Approved By (Planning Section Chief)		Date	Time	
BRITTANY PHILLIPS		MISSY FORDER		04/26/2022	1800	


Division/Group Assignment List (ICS 204 WF)

Controlled Unclassified Information//Basic

1. Incident Name:			3.			
CERRO PELADO			II	Division/Group A/Z NIGHT		
2. Operational Period: 0700-0700						
Date/Time From:	04/27/2022 0700	WED	Date/Time To:	04/28/2022 0700	THU	
4. Operations Personnel						
OPERATIONS CHIEF	PETE MYERS, MIKE DAVIS VICKY EDGE, CHAD COOK (T)		BRANCH DIRECTOR	CORDELL TAYLOR		
DIVISION/GROUP SUPERVISOR	AARON EDWARDS					
5. Resources Assigned this Period						
Strike Team / Task Force / Resource Designator	LWD	Leader	Number Persons	Drop Off PT./Time	Pick Up PT./Time	
E-1 ENG6 CARBONDALE	05/07	SCOTT EVANS	3	JFC/1900	JFC/0700	
6. Control Operations/Work Assignments:						
Task: Patrol and monitor fire						
Purpose: Alert operations of any problems						
End State: Ensure quick response as needed						
7. Special Instructions:						
<ul style="list-style-type: none"> Briefing will be held at Jemez Falls Campground 0700. Coordinate with READ before ground disturbance. Coordinate with Sandoval County, State Police, and Tribal Nations Identify impassable roads. With GPS locations in Field Map. Do not post photos with Archaeological resources that have location information. Leave all gates as you found them, either opened or closed. If the gate was closed when you arrived, close it as you leave. Identify IA resources off each division to support IA under TFR. ** IN THE EVENT OF AN IWI: CONTACT COMMUNICATIONS ON COMMAND 						
8. Division/Group Communication Summary						
Function	Channel	RX Frequency N/W	RX Tone/NAC	TX Frequency N/W	TX Tone/NAC	Mode
COMMAND	1	169.7500 N	146.2	167.1000 N	146.2	A
COMMAND	2	169.5375 N	146.2	164.7125 N	146.2	A
COMMAND	11	172.3000 N		165.0125 N		A
9. Prepared By (Resource Unit Leader)		Approved By (Planning Section Chief)		Date	Time	
BRITTANY PHILLIPS		MISSY FORDER		04/26/2022	1800	

INCIDENT RADIO COMMUNICATIONS PLAN I-205				1. INCIDENT NAME			2. DATE/TIME PREPARED			3. OPERATIONAL PERIOD DATE/TIME		
				Cerro Pelado			4/26/2022 1700			04/27/22 0700 - 04/28/22 0700		
4. BASIC RADIO CHANNEL UTILIZATION												
Ch #	Function	Channel Name	Assignment	RX Freq	N/W	RX Tone/NAC	TX Freq	N/W	TX Tone/NAC	Mode Analog (A) Digital (D) Mixed (M)	Remarks	
1	Command	CMD 1	DIV A	169.7500	N	146.2	167.1000	N	146.2	A	CERRO PELADO	
2	Command	CMD 2	DIV R & Z	169.5375	N	146.2	164.7125	N	146.2	A	ROAD 10/270 INTERSECTION	
3	Command	CMD 3	INOP	170.4125	N	146.2	165.9625	N	146.2	A	(Inop)	
4	Unassigned		Unassigned									
5	Tactical	TAC 1	DIV A	168.0500	N	146.2	168.0500	N	146.2	A		
6	Tactical	TAC 2	DIV Z	168.2000	N	146.2	168.2000	N	146.2	A		
7	Tactical	TAC 3	STRUCTURAL PROTECTION	168.6000	N	146.2	168.6000	N	146.2	A		
8	Tactical	TAC 4	DIV R	168.2500	N	146.2	168.2500	N	146.2	A		
9	Tactical	TAC 5	Unassigned	166.7250	N	146.2	166.7250	N	146.2	A		
10	Tactical	TAC 6	REM TEAM	166.7750	N	146.2	166.7750	N	146.2	A	Night Shift	
11	Command	PELADO	All Divisions	172.3000	N		165.0125	N	131.8	A	Santa Fe Dispatch	
12	Air Ground	A/G 51		168.3125	N		168.3125	N		A	Local Air to Ground	
13	Air Ground	A/G PRI		166.8250	N		166.8250	N		A		
14	Air Ground	A/G SEC		168.7375	N		168.7375	N		A		
15	Medivac	VMED 28		155.3400	N		155.3400	N	156.7	A	Air Ambulance	
16	AIRGUARD			168.6250	N		168.6250	N	110.9	A		
5. Special Instructions:		USE HUMAN REPEATER WHEN NECESSARY. IF ASSIGNED COMMAND CHANNEL DOES NOT WORK TRY THE OTHER ONE.										
6. I-205 Prepared By: Communications Unit Leader			Name: Barry Stearns					Signature: <i>Barry H Stearns</i>				

1. INCIDENT NAME: Cerro Pelado	2. OPS PERIOD DATE: 4/27/22	START TIME: 0900	END TIME: 2030	SUNRISE 0615	SUNSET 1947
---	---------------------------------------	----------------------------	--------------------------	------------------------	-----------------------

3. REMARKS and RISK MITIGATIONS: All missions will be analyzed in terms of hazards and risks. Insure to brief for all IA missions to include new frequencies, ground contacts and other aircraft. High level to low level recon of each new LZ/Dipsite  Retardant Avoidance areas:	4. READY ALERT AIRCRAFT: IA 7HE See Medical Plan	5. TFR # 2/2366 Freq: 118.825 Surface ≥ 14,000' MSL 6 nautical miles from 35° 49' 00" x 106° 31' 00"
---	---	---

6. PERSONNEL	NAME	PHONE #	7. FREQUENCIES	AM	FM	8. FIXED-WING
AOBD	Lynne Howard	678-699-3266	A/A (Fixed/TFR)	118.8250		Air Attack: 78NA / 690B / Base: ABQ
ASGS	John Mason	865-336-6664	A/A (Rotor)	121.3250		Lead Planes/Airtankers - Order through Air Attack If air attack is not up---order through AOBD.
ATGS ATGS-T	Greg Haxby Adam Soper	208-709-2459	A/G Command		166.8250	TA49 35° 49.6644'N x 106° 19.0908'W Santa Fe Airport (SAF) 35° 37.02'N x 106° 05'.22'W
HEBM (Santa Fe)	Brian Kleisen	505-467-9351	A/G Tactical		168.7375	
HMGB (7HE)	Josh Brookshire	505-670-9385	DECK (Santa Fe)		163.100	Costs to: 2022.cerropelado.finance@firenet.gov
HMGB (3CH)	Ben Thayer	208-830-1636				
Santa Fe Dispatch - Aircraft	Darrel	505-438-5600	AIRGUARD (emergency only)		168.6250 TX Tone110.9	

9.HE
LICO
PTE
RS

FAA N#	T Y	MAKE/ MODEL	BASE	AVAIL	START	REMARKS	FAA N#	T Y	MAKE/ MODEL	BASE	AVAIL	START	REMARKS
7HE	3	AS350B3	TA49	0800	0830	Not Assigned Forest IA Ship	Guard (Lobo 29)	1	UH60	Santa Fe (SAF)	---	---	Bucket / ANG Base
473CH	1	CH-47D	Santa Fe (SAF)	0800	0830	Bucket	Guard (Lobo 31)	1	UH60	Santa Fe (SAF)	0800	0800	Bucket / ANG Base
Guard (Lobo 18)	1	UH60	Santa Fe (SAF)	0800	0830	Bucket / ANG Base							

CERRO PELADO FIRE LIAISON CONTACT INFORMATION

Paul Stevens – LOFR (Lead) 252-216-6316 npsobxranger@yahoo.com
Stephanie Allison – LOFR(t) 662-763-8374 stephanie.allison@usda.gov
Rhea Whalen – LOFR(t) 843-412-3571 rhea.whalen@usda.gov

CERRO PELADO FIRE INFORMATION

<https://inciweb.nwcg.gov/incident/8075/>

<https://www.facebook.com/2022.cerropeladofire>

<https://twitter.com/SantaFeNF>

Phone-505-312-4590

We are looking for pictures of the Fire especially those of firefighters and equipment in action, structure protection and scenic shots of the fire. Please mail to 2022.CerroPelado@firenet.gov



Wildfire Chief's Letter of Intent 2022

<https://www.fs.usda.gov/sites/default/files/Chiefs-WildfireIntentLetter2022-Signed.pdf>

Incident Behavior

Fireline Handbook, Chapter 6 – Common Responsibilities

Inappropriate Behavior:

It is important that inappropriate behavior be recognized and dealt with promptly. Inappropriate behavior is all forms of harassment including sexual and racial harassment. When you observe or hear of inappropriate behavior you should:

- Inform and educate subordinates of their rights and responsibilities
- Provide support to the victim.
- Develop appropriate corrective measures.
- Report the incident to your supervisor if the behavior continues.
- Document inappropriate behavior and report it to the employee's home agency.
- While working in and around private property, recognize and respect all private property.

Drugs and Alcohol:

- Non-prescription unlawful drugs and alcohol are not permitted at the incident. Possession or use of these substances will result in disciplinary action.
- During off-incident Rest & Recuperation periods, personnel are responsible for proper conduct and maintenance of fitness for duty. Drug or alcohol abuse resulting in unfitness for duty will normally result in disciplinary action.
- Be a positive role model. Do not be involved with drug or alcohol abuse.

**We are what we repeatedly do.
Excellence, then, is not an act, but a habit.**
-Aristotle

Janine Summy, Human Resource Specialist, 509-429-1206, HRSPSummy@gmail.com

CERRO PELADO FIRE

Finance Process

Please email all documents that pertain to your assignment to the Cerro Pelado inbox.

2022.cerropelado.finance@firenet.gov

Use the following format on the email subject line:

(Example: TIME/O-200/SBear/Safety)

If you are unable to submit your crew time reports (CTRs) and shift tickets (STs) electronically, please drop them in the CTR/ST box at morning briefing.

Contact Finance Section directly at 720-527-2533

Required Financial Documents:

Agency Overhead	Agency ADs / EFFs	VIPR Resources	Contract / Agency Crews	Cooperators
Resource Order Signed CTRs	Resource Order Casual Hire Form Signed CTRs	Resource Order VIPR Agreement Schedule of Items Inspections Signed STs	Resource Order Manifest Agreement / Contract Schedule of Items Inspections Signed CTRs	Resource Order Agreement Signed STs /CTRs



Training Specialist Cerro Pelado

The Training Specialist is working remotely. Training Specialist contact information for the Cerro Pelado Fire is:

- Robert Rivelle
- Most important; If any Trainee or Trainer has any questions or concerns, call/text: 707.498.1761 **anytime**.
- Email: robert_rivelle@nps.gov

How to register as a Trainee:

1. Use the QR code below to register. If you're unable to register using the QR code, please call 707.498.1761 anytime.
2. Once registered, you will receive text and email updates.

How to close-out your training assignment:

1. **Trainer:** Complete and Evaluation Record in the back of the Position Task Book and make as many entries as possible within the individual tasks. Discuss this with your Trainee.
2. **Trainer:** Complete an individual performance rating (ICS 225) and go over the performance rating with your Trainee.
3. **Trainee:** Text a photo or email your individual performance rating (ICS 225) to the Training Specialist.
4. **Trainee:** Complete the Trainee exit questions at the QR code below.
5. **Trainee:** Once 1-4 are completed, the Trainee and the Training Specialist will have a brief conversation to discuss the Task Book and assignment with the Trainee.
6. **Done**, except for safe travels home!

Trainee Registration



Trainee Exit Questions



Logistics

Ordering Process

Orders should be sent to the below ORDM's by 1300 for Cache Orders. For all other orders please have orders to ORDM's by 0800 hours or 1500 hours. Orders should be routed as shown below:

Chad_wilberger@firenet.gov

Fuel Truck Hours 0630 to 0900 and 1800 to 2100

Logistics: Chris Revels 864-490-4192 Jane Artega 530-957-3558

Facilities Unit Contact: Base Camp: Jimmy Rickard 706-308-2015

ICP: Susanne Adams 715-702-918

Ground Support: Mike Post 305-849-1322 or Jay Aron 401-316-8730

Supply Unit Tom Piper 727-514-5513

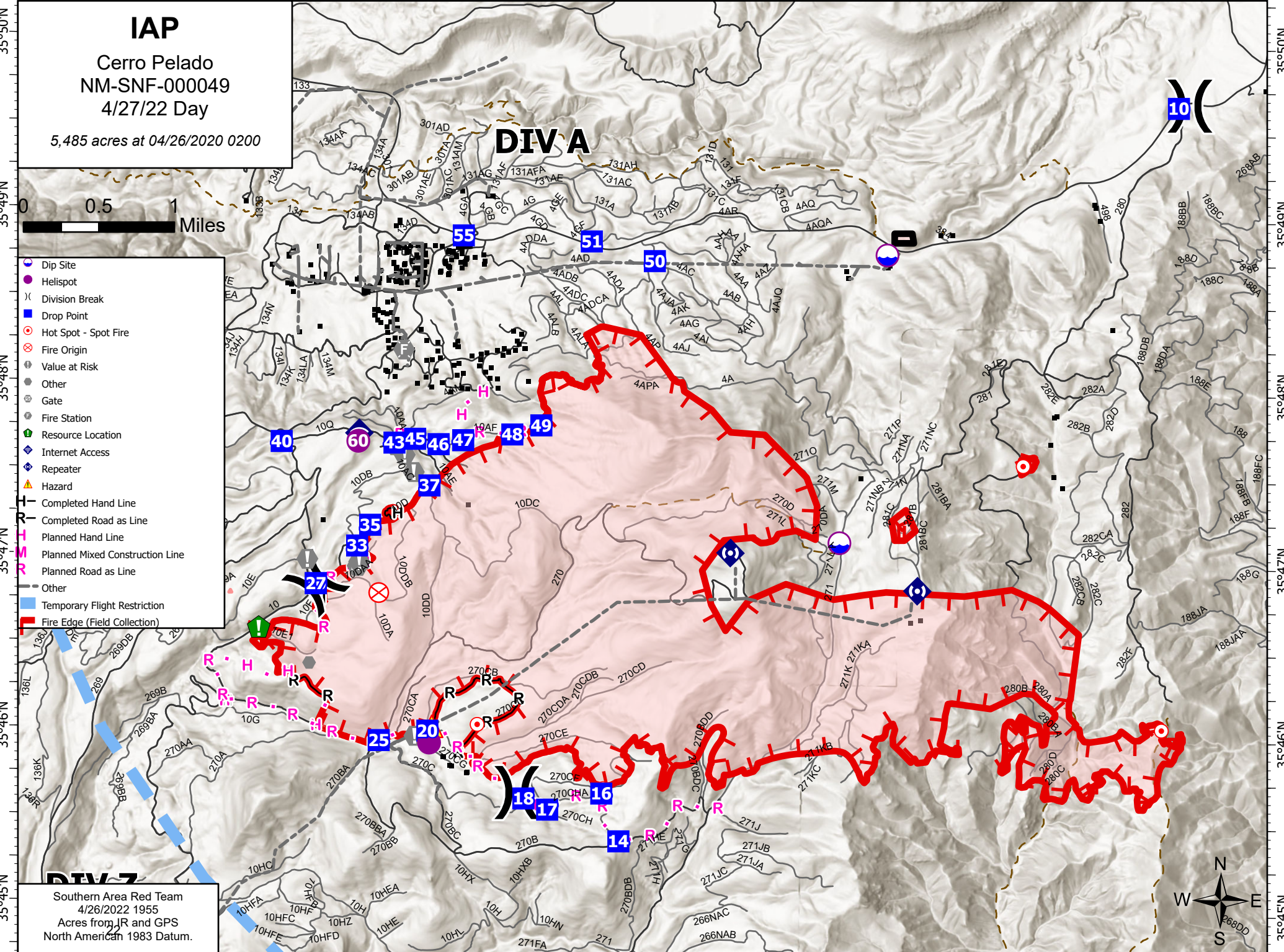
Medical Unit Fred Adler 479-238-6064 or Nick Arnett 408-888-1900

Security Manager: Karen Bradford 423-851-4206

Food Unit Clyde Leggins 828-334-2340

Communications Barry Stearns 954-553-6544

106°38'W 106°37'W 106°36.01'W 106°35'W 106°34'W 106°33'W 106°32'W 106°31'W 106°30'W



IAP
Cerro Pelado
NM-SNF-000049
4/27/22 Day
5,485 acres at 04/26/2020 0200

0 0.5 1 Miles

- Dip Site
- Helispot
- Division Break
- Drop Point
- Hot Spot - Spot Fire
- Fire Origin
- Value at Risk
- Other
- Gate
- Fire Station
- Resource Location
- Internet Access
- Repeater
- Hazard
- Completed Hand Line
- Completed Road as Line
- Planned Hand Line
- Planned Mixed Construction Line
- Planned Road as Line
- Other
- Temporary Flight Restriction
- Fire Edge (Field Collection)

Southern Area Red Team
4/26/2022 1955
Acres from JR and GPS
North American 1983 Datum.



MEDICAL PLAN (ICS 206 WF)

Controlled Unclassified Information//Basic

1. Incident/Project Name				2. Operational Period							
Cerro Pelado Fire				04/27-28/2022 0700-1900							
2. Medical Aid Stations											
Medical Aid Stations		Location				Advanced Life Support (ALS)					
TBD						Yes	No				
3. Ambulance Services											
For local 911 resources, call Sandoval County Dispatch (505) 896-7300											
Name		Location		Phone		Advanced Life Support (ALS)					
MED 30 (4WD)		Division A		Cerro Communications		X					
Ambulance 1 (24-hr)		Division Z, DP 25		Cerro Communications		X					
Jemez Pueblo Ambulance Service		4535 NM 4, Jemez Pueblo, NM		See above		X					
MED 31		550 Zia Pueblo Road, NM		See above		X					
4. Air Ambulance Services											
Sandoval County Dispatch (505) 896-7300 A/G Frequency VMed28 155.34 Tx Tone 156.7											
Name		Location				Advanced Life Support (ALS)					
Classic Air Medical		Los Alamos – Night Vision				X					
Tri-State Care Flight		Santa Fe – Night Vision				X					
UNM Lifeguard		Albuquerque – Night Vision				X					
Bernalillo County Sheriff 505-798-7000		A-Star: Day short haul, 24-hour extrication/relocation				X					
5. Hospitals											
Name/Address		GPS Datum – WGS 84 Coordinate Standard		Travel Time Air Gnd		Phone		Helipad Yes No		Level of Care Facility	
Los Alamos Medical Center 3917 West Road Los Alamos, NM		Lat:	35 52.91' N		30 min	40 min	(505) 231-2602 Supv (505) 662-4201	X		Level 3 Trauma	
		Long:	106 19.13' W								
		VHF:									
University of New Mexico 2211 Lomas Blvd. NE Albuquerque, NM		Lat:	35 05.27' N		30 min	2 hrs	(505) 272-2111	X		Level 1 Trauma Burn Stabilization	
		Long:	106 37.11' W								
		VHF:									
Christus St. Vincent Medical Center 455 St. Michael's Drive Santa Fe NM		Lat:	35 39.56' N		30 min	2 hrs	(505) 913-3361	X		Level 3 Trauma	
		Long:	105 56.73' W								
		VHF:									
University of Colorado 12605 E. 16th Avenue, 3rd floor, Aurora, CO		Lat:	39 44.56' N		3.5 hrs	7 hrs	(844) 285-4555	X		Burn Center	
		Long:	104 50.52' W								
		VHF:									
6. Clinics											
Trinity Urgent Care 1460 Trinity Dr Los Alamos, NM		Open 0900-1845 Every Day (505) 412-6033									

IWI IC Responsibilities:

- Take charge of the scene – inform the Division Supervisor and Communications that you are the IWI IC and establish radio communications(frequencies, channels). Identify the emergency name – Division A medical, etc.
- Assign or begin patient assessment (Medical Incident Report - MIR) and first aid. Request additional medical resources on division/branch or across incident. Transmit MIR patient information to Communications.
- Determine patient transportation through consultation with line medical personnel and Medical Unit Leader. Consider transportation time, risk to personnel, destination facility and available operational resources. If air transport is chosen, implement the plan for alternative transportation in the event aircraft cannot complete the mission. Order transportation resources through Communications as early as possible.
- Notify Communications as resources arrive and any patient status changes. Names of injured or deceased individuals will not be transmitted on the radio.
- Initiate documentation for future investigation; if a line safety officer is available, assign them to lead documentation. Do not move deceased individuals, gear or personal effects except to accomplish rescue work or protect the safety of others. Obtain written documentation of witnesses. The Unit Log, ICS 214, may be used for the initial documentation, but a subsequent narrative will be required.
- As appropriate, conduct an After Action Review to determine successes, areas to improve and lessons learned.

MEDICAL PLAN (ICS 206 WF)

Controlled Unclassified Information//Basic

7. Division Branch Group	Area Location Capability		
Div A	EMS Responders & Capability:	Med 30 Ambulance (ALS) Medic Team 1 (ALS) - Cody Keller 479-409-9439	
	ETA for Ambulance to Scene:		
	Air:	40 min.	
	Ground:	1 hr.	
Div I	EMS Responders & Capability:		
	ETA for Ambulance to Scene:		
	Air:	40 min.	
	Ground:	1 hr.	
Div R	EMS Responders & Capability:		
	ETA for Ambulance to Scene:		
	Air:	40 min.	
	Ground:	1 hr.	
Div Z	EMS Responders & Capability:	Medic Team 2 (ALS) - Dean Carpenter 479-236-1174 REMS-1 (ALS) Tanner Smith 541-556-9045 Ambulance 1 (ERL) DP-25 William Boyd 717-586-3652	
	ETA for Ambulance to Scene:		
	Air:	40 min.	
	Ground:	1 hr.	
Structure	EMS Responders & Capability:		
	ETA for Ambulance to Scene:		
	Air:	40 min.	
	Ground:	1 hr.	
Div A/Z Night	EMS Responders & Capability:	Ambulance 1 (ERL) DP-25 Sage Stewart 479-806-0860	
	ETA for Ambulance to Scene:		
	Air:	40 min.	
	Ground:	1 hr.	
ICP	EMS Responders & Capability:	Fred Adler (EMT), Nick Arnett (EMTF)	
	Equipment Available on Scene:	BLS	
	Medical Emergency #:	(479) 238-6064 or (408) 888-1900	
	ETA for Ambulance to Scene:		
	Air:	20 min	
	Ground:	30 min	
8. Prepared By (Medical Unit Leader)	9. Date/Time	10. Reviewed By (Safety Officer)	
Fred Adler, MEDL, Nick Arnett MEDL(t)	4/26/2022 1800	Tony Rivers SOFR	4/26/2022 1800

MEDICAL PLAN (ICS 206 WF)

Controlled Unclassified Information//Basic

Medical Incident Report

FOR A NON-EMERGENCY INCIDENT, WORK THROUGH CHAIN OF COMMAND TO REPORT AND TRANSPORT INJURED PERSONNEL AS NECESSARY.

FOR A MEDICAL EMERGENCY: IDENTIFY ON SCENE INCIDENT COMMANDER BY NAME AND POSITION AND ANNOUNCE "MEDICAL EMERGENCY" TO INITIATE RESPONSE FROM IMT COMMUNICATIONS/DISPATCH.

Use the following items to communicate situation to communications/dispatch.

1. CONTACT COMMUNICATIONS / DISPATCH (Verify correct frequency prior to starting report)

Ex: "Communications, Div. Alpha. Stand-by for Emergency Traffic."

2. INCIDENT STATUS: Provide incident summary (including number of patients) and command structure.

Ex: "Communications, I have a Red priority patient, unconscious, struck by a falling tree. Requesting air ambulance to Forest Road 1 at (Lat./Long.) This will be the Trout Meadow Medical, IC is TFLD Jones. EMT Smith is providing medical care."

Severity of Emergency / Transport Priority	<input type="checkbox"/> RED / PRIORITY 1 Life or limb threatening injury or illness. Evacuation need is IMMEDIATE <i>Ex: Unconscious, difficulty breathing, bleeding severely, 2^o – 3^o burns more than 4 palm sizes, heat stroke, disoriented.</i> <input type="checkbox"/> YELLOW / PRIORITY 2 Serious Injury or illness. Evacuation may be DELAYED if necessary. <i>Ex: Significant trauma, unable to walk, 2^o – 3^o burns not more than 1-3 palm sizes.</i> <input type="checkbox"/> GREEN / PRIORITY 3 Minor Injury or illness. Non-Emergency transport <i>Ex: Sprains, strains, minor heat-related illness.</i>	
Nature of Injury or Illness & Mechanism of Injury		<i>Brief Summary of Injury or Illness (Ex: Unconscious, Struck by Falling Tree)</i>
Transport Request		<i>Air Ambulance / Short Haul/Hoist Ground Ambulance / Other</i>
Patient Location		<i>Descriptive Location & Lat. / Long. (WGS84)</i>
Incident Name		<i>Geographic Name + "Medical" (Ex: Trout Meadow Medical)</i>
On-Scene Incident Commander		<i>Name of on-scene IC of Incident within an Incident (Ex: TFLD Jones)</i>
Patient Care		<i>Name of Care Provider (Ex: EMT Smith)</i>

3. INITIAL PATIENT ASSESSMENT: Complete this section for each patient as applicable (start with the most severe patient)

Patient Assessment: See IRPG page 106

Treatment:

4. TRANSPORT PLAN:

Evacuation Location (if different): (Descriptive Location (drop point, intersection, etc.) or Lat. / Long.) Patient's ETA to Evacuation Location:

Helispot / Extraction Site Size and Hazards:

5. ADDITIONAL RESOURCES / EQUIPMENT NEEDS:

Example: Paramedic/EMT, Crews, Immobilization Devices, AED, Oxygen, Trauma Bag, IV/Fluid(s), Splints, Rope rescue, Wheeled litter, HAZMAT, Extrication

6. COMMUNICATIONS: Identify State Air/Ground EMS Frequencies and Hospital Contacts as applicable

Function	Channel Name/Number	Receive (RX)	Tone/NAC *	Transmit (TX)	Tone/NAC *
COMMAND					
AIR-TO-GRND					
TACTICAL					

7. CONTINGENCY: Considerations: If primary options fail, what actions can be implemented in conjunction with primary evacuation method? Be thinking ahead.

8. ADDITIONAL INFORMATION: Updates/Changes, etc.

REMEMBER: Confirm ETA's of resources ordered. Act according to your level of training. Be Alert. Keep Calm. Think Clearly. Act Decisively.