



# Cerro Pelado

**NM-SNF-000049, P3PK47 (0310)**

**Operational Period:  
Thursday, April 28, 2022  
0700 – April 29, 2022 0700**

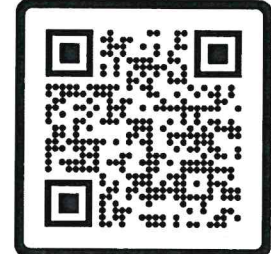
Check - In



Avenza Maps



IAP

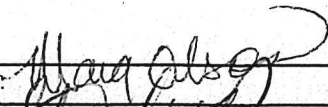
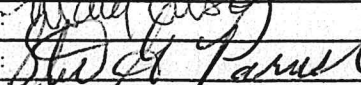


Cerro Pelado Communication Phone  
561-527-0804



**SA Red Team  
Incident Commander – Steve Parrish**

## INCIDENT OBJECTIVES (ICS 202)

<b>1. Incident Name:</b>		<b>2. Operational Period:</b> 0700-0700	
CERRO PELADO		Date/Time From: 04/28/2022 0700 THU	Date/Time To: 04/29/2022 0700 FRI
<b>3. Objective(s):</b>			
Management Objectives			
<ol style="list-style-type: none"> <li>1) Protection of human life and safety is the first priority for all actions taken on a wildfire and can overrule all other strategic/management objectives and incident requirements.</li> <li>2) Base management decisions on meeting objectives while also minimizing the risk of COVID-19 exposures to responders and the public. COVID-19 considerations may alter how you meet goals but should not lead to higher risk tactics.</li> <li>3) Maintain and strengthen relationships with the Santa Fe National Forest, private landowners, the public, cooperators and partners by providing timely and accurate information.</li> <li>4) Protect the unique attributes of impacted watersheds through actions that minimize sedimentation and invasive species movement.</li> <li>5) Protect impact to cultural resources through consultation with local forest specialists.</li> </ol>			
Control Objectives			
<ol style="list-style-type: none"> <li>1) Protection of human life and safety is the first priority for all actions taken and shall override all other incident control objectives. Evaluate risk vs. benefit in strategic and tactical planning and only commit operational resources to actions that have the highest probability of success.</li> <li>2) Keep fire out of Jemez Canyon.</li> <li>3) Keep fire East of Forest Road (FR) 10; Southeast of Community SLP; South of State Route (SR) 4; East of FR's 282 &amp; 280; and North of FR 270.</li> <li>4) Minimize retardant impacts to Jemez Natural Recreation Area.</li> <li>5) Protect values at risk in the Valles Caldera National Preserve including watersheds, visitor and administrative infrastructure, historic structures, cultural resources, and important wildlife habitats.</li> <li>6) Provide initial attack resources to respond to any new ignitions within the TFR area to limit potential size and growth.</li> </ol>			
<b>4. Operational Period Command Emphasis:</b>			
**** L C E S ****			
<b>General Situational Awareness:</b>			
<ul style="list-style-type: none"> <li>• Continued low RHs</li> <li>• No predicted precipitation for several days</li> </ul>			
<b>WEATHER DISCUSSION:</b> Unusually early start to fire season. Critical to extreme fire weather for the next several days. Entire area is experiencing extended drought. Please see daily weather forecast for detailed report.			
<b>7. Prepared by:</b> MARG OLSON		<b>Position/Title:</b> PLANNING SECTION CHIEF	
<b>8. Approved by Incident Commander:</b>		<b>Name:</b> STEVE PARRISH	
ICS 202		IAP Page	
		<b>Signature:</b> 	
		<b>Signature:</b> 	
		<b>Date/Time:</b> 04/27/2022 1800	



## ORGANIZATION ASSIGNMENT LIST (ICS 203)

<b>1. Incident Name:</b>		<b>2. Operational Period:</b> 0700-0700		
CERRO PELADO		Date/Time From: 04/28/2022 0700	THU Date/Time To: 04/29/2022 0700 FRI	
<b>3. Incident Commander(s) and Command Staff:</b>		READ THOMPSON, LISA		
IC/UC	PARRISH, STEVE G	<b>6. Logistics Section:</b>		
DEPUTY	PEARSON, PAT	CHIEF	REVELS, CHRIS; ARTEAGA, JANE	
SAFETY OFFICER	RIVERS, TONY; HAWKINS, TOMMY LIDDELL, BRAD; STONE, DAVID	SUPPLY UNIT	PIPER, TOM	
INFORMATION OFFICER	HIBBARD, CATHERINE; AURIEMMO, LESLIE, STRAUER, BONNIE; NICHOLS, JOHN ENGLE, JASON (T)	FACILITIES UNIT	ADAMS, SUSANNE RICKARD, JAMES (T)	
LIAISON OFFICER	STEVENS, PAUL; ALLISON, STEPHANIE (T) WHALEN, RHEA (T)	GROUND SUPPORT UNIT	JOHNSON, ROBERT MIKE POST	
<b>4. Agency/Organization Representative(s):</b>		COMMUNICATIONS UNIT	STEARNS, BARRY RADZIVILL, DAVID (T)	
Agency/Organization	Name	MEDICAL UNIT	ADLER, FRED; ARNETTE, NICK; FAGERMAN, DAVIN	
USFS SANTA FE	CRESS, DEBBIE; MARSHALL, JEREMY; ELMORE, LANCE (FMO)	SECURITY UNIT	BRADFORD, KAREN L	
NEW MEXICO FORESTRY DIVISION	CRANE, LAWRENCE	FOOD UNIT	LOWE, JAMES	
NPS VALLES CALDERA	SILVA-BANUELOS, JORGE	<b>7. Operations Section:</b>		
NPS BANDELIER	RODGERS, MARLA THIVENER, JUSTIN	OPS SECTION CHIEF	MYERS, PETER DAVIS, MIKE	
TRIBAL LIAISON	MONTES, REUBEN	PLANNING OPS	EDGE, VICK; COOK, CHAD (T)	
LOS ALAMOS NATIONAL LABORATORY	NIETO, RICH	Branch	I	
IARR FEDERAL RESOURCES NM AND AZ	PAUL GIBBS	BRANCH DIRECTOR	MORTON, HEATH	
<b>5. Planning Section:</b>		DIVISION/GROUP	A	BURGETT, JOEL MCKINNON, BLAINE (T)
CHIEF	FORDER, MISSY; OLSON, MARG	DIVISION/GROUP	M	UNSTAFFED
RESOURCES UNIT	PHILLIPS, BRITTANY B SOBIESKI, SUE (VIRTUAL) (T)	DIVISION/GROUP	Z	PASCARELLA, ANDY
SITUATION UNIT	KETT, SUSAN R	DIVISION/GROUP	R	ALVES, FRANK HELFENSTIEN, LUKE (T)
DEMOBILIZATION UNIT	THOMAS, DONNA L	DIVISION/GROUP	STRUCTURE	ROBERTSON, CRAIG
FIRE BEHAVIOR ANALYST	WARD, MIKE	DIVISION/GROUP	IA	SCHROEDER, KRIS
HUMAN RESOURCE SPECIALIST	SUMMY, JANINE	Branch	II	
TRAINING SPECIALIST	RIVELLE, RICHARD	BRANCH DIRECTOR	TAYLOR, CORDELL	
GIS SPECIALIST	BARNES, TOMMY M ; KIRSCH, ANDY; SHELLEY, MICHAEL GATES, KATHERINE ELIZABETH (T)	DIVISION/GROUP	A/Z NIGHT	EDWARDS, AARON
TECHNOLOGY SUPPORT SPECIALIST	FARMER, TONY; PADDOCK, BRIAN WEBB, KELLY (T)	<b>7b. Air Operations Branch:</b>		
INCIDENT METEOROLOGIST	STEARNS, SCOTT	AIR OPS BRANCH DIRECTOR	HOWARD, LYNN	
DOCUMENTATION UNIT		AIR SUPPORT SUPERVISOR	MASON, JOHN	
READ	SILVA, ANDRE; PITTENGER, DAVE; BAISDEN, BECKY	HELIBASE MANAGER	KLEISEN, BRIAN	
<b>9. Prepared By:</b>		<b>8. Finance/Administration Section:</b>		
Name:	MARG OLSON	CHIEF	MEREDITH, JAMES M WARNER, JOHN R	
Position/Title:	PLANNING SECTION CHIEF	TIME UNIT	WINKLER, KIMBERLY	
Signature:		PROCUREMENT UNIT	PELCH, GEMAA	
ICS 203	IAP Page	COMPENSATION UNIT	LOWDER, DIANE	
Date/Time:	04/27/2022 1800	COST UNIT	TRAVIS, DIANE	



To: All Incident Personnel, Cerro Pelado Fire

As Southern Area National Type I Incident Commander, I am committed to a policy of “zero tolerance” of inappropriate behavior during incident operations. Any form of harassment, discriminatory practices, or disrespectful behavior will not be tolerated. Known or reported acts will be dealt with appropriately.

I am particularly concerned about the perception that alcohol has a place in any of the Incident facilities. It is not appropriate to indulge in alcoholic beverages during any fire assignment.

The National Team from the Southern Region has a policy of “NO ALCOHOL” from the time of dispatch until the time of physical release from the Incident. Members of the Team voluntarily comply with this policy; all incident personnel will be expected to do so also.

We endorse, support, and expect an attitude of mutual respect for all Incident personnel and the public we serve. We also, endorse the attitude and work ethic that places “Safety First, every time on every Incident.” We expect nothing less.

/s/Steve Parrish

Incident Commander

SAIMT 1





# INCIDENT Weather Forecast



Forecast No: 5  
 Prediction For: Thursday  
 Shift Date: April 28, 2022  
 Forecast Issued: April 27, 2022 at 1800

Name of Incident: Cerro Pelado Fire  
 Unit: Santa Fe NF  
 Incident Meteorologist: Scott Stearns  
 (208) 577-1617

**Discussion:** Above normal temperatures will combine with dry, southwest winds to create elevated fire weather conditions today. RHs will dip back down into the single digits with southwest winds. On Friday, west-southwest winds strengthen ahead of a dry cold front, continuing the fetch of dry air and leading to CRITICAL conditions across the region. As the front approaches just after noon on Friday, strong and gusty winds will turn from west-southwest to northwest.

### Forecast for Today:

Sky/Weather: Mostly sunny

	<u>Jemez Springs 8,000'</u>			<u>Cerro Pelado Pk 9,400'</u>		
Max Temperature:	71			64	°F	
Min RH:	9			11	%	
Wind (20 FT):	Inversion breaking about 0900.					
...	SW	10		SW	12	mph
...	Gusts:	18		Gusts:	23	mph
Haines Index:	6			6		
LAL:	1			1		
Chance of Precipitation:	0			0	%	
Tonight's Min Temperature:	40			33	°F	
Tonight's Max RH:	35			30	%	
Tonight's Wind (20 FT):	Moderate inversion sets in between 2000 and 2100.					
...	DS/DV	5		WSW	8	mph
...	Gusts:	15		Gusts:	20	mph
Tonight's Haines Index:	6			6		
Tonight's LAL:	1			1		
Tonight's Chnc of Precip:	0			0	%	

### Forecast for Friday: \*\*\*RED FLAG WARNING 0900 to 2100 for strong winds and low RHs\*\*\*



Sky/Weather: Sunny with a cold front passage

	<u>Jemez Springs 8,000'</u>			<u>Cerro Pelado Pk 9,400'</u>		
Max / Min Temperature:	64	35		58	27	°F
Min / Max RH:	10	30		11	25	%
Wind (20 FT):	Inversion breaking between 0800 and 0900. Winds start west-southwesterly in the morning then strengthen and switch to the northwest just after noon.					
...	NW	18		NW	20	mph
...	Gusts:	35		Gusts:	40	mph
Haines Index:	4		LAL: 1	Precip Chance:	0	

**Extended Outlook:** Saturday a brief ridge of high pressure allows warm and dry conditions, but winds will relax. Sunday brings another day of potential windy conditions. Meanwhile, the long term forecast remains dry.

		<u>Max T</u>	<u>Min T</u>	<u>Min RH</u>	<u>Max RH</u>	<u>Ridge Winds @ 1500</u>	<u>Weather</u>
8,600'	Sat:	66	36	8	25	W @ 8 G23	
	Sun:	69	39	9	35	SW @ 10 G25	
	Mon:	69	40	10	30	W @ 10 G25	

## FIRE BEHAVIOR FORECAST

FORECAST NUMBER: 05	TYPE OF FIRE: Wildland, Type 1	
FIRE NAME: Cerro Pelado	OPERATIONAL PERIOD: Day Shift	
DATE ISSUED: 4/27/22 TIME ISSUED: 1800	SHIFT DATE: Tuesday, April 28, 2022	
UNIT: Santa Fe NF	SIGNED: Mike Ward, FBAN (t)	
<b>WEATHER SUMMARY:</b>	<b>Fire Environment &amp; Danger Information</b>	
<p><b>Local Thresholds – Watch Outs</b> Min RH &lt; 13%, Winds &gt; 20 mph, Temp &gt; 80, Heavy Fuels &lt; 5%</p> <p><b>Today's Significant Fire Weather:</b> <b>Single Digit Humidity and Haines Index of 6</b></p>	 SNF West Pocket Card	 SWCC Fire Danger Page

### FIRE BEHAVIOR:

**GENERAL:**

Active fire behavior is expected today on all sides of the fire with receptive fuels.

Current Fire Environment Conditions:

Fine Dead Fuel Moisture = 5%, 1,000 Hour Fuel Moisture = 11%, Live Shrub Moisture = 82%  
ERC's remain around the 90<sup>th</sup> percentile @ Jemez RAWs, but at or near maximum value for this date.

**Fire Behavior based on MAXIMUM values for the fuel models shown, exposed fuels on steep slope.**

Fuel Model	Rate of Spread	Flame Length
Grass/Shrub	6-14 chains/hour	2-4 feet
Timber	6-16 chains/hour	7-10 feet

Spotting from ridge top torching trees up to **0.5 mile during wind gusts**. Probability of Ignition = **50 to 90%**  
In **one hour** new spot fires or ignitions can reach **6-10 acres**.

**Specific Areas of Concern:**

**Alpha** – very low humidity's and high winds will increase fire intensity in already hot areas from recent burnouts. The north-east section of the fire at the head of Paliza Canyon in the pocket area which has been quite may start to have active fire spread.

**Romeo:** East side of the fire in the Las Conchas fire scar will continue to actively burn and move to the east. Continued burning of heavies and duff in the recently burned areas off of the 270 road system.

**Zulu** – Large heavy fuels continue to burn in this area. Wind alignment with San Juan Canyon may influence surface wind speeds and directions. Higher potential for spotting across handlines in recently burned areas.

**AIR OPERATIONS:**

Mostly sunny skies with some wind gusts, but a good day for aviation operations. Moderate smoke production at times may cause limited visibility.

**SAFETY: Potential for erratic/ extreme fire behavior! Haines index of 6, RH single digits, winds above 20 mph.**

Watch Out 14: *Weather becoming hotter and drier* and  
Fire Order 3: *Base all actions on current and expected behavior of the fire.*

Haines Index (HI) is a **numerical value that indicates the potential for large wildfires to experience extreme fire behavior**. HI measures the potential for dry, unstable air to contribute to the development of large or erratic wildland fires.

*Send any fire behavior observations or photos to: [Michael.d.ward@usda.gov](mailto:Michael.d.ward@usda.gov), 470-446-2247*





## HEALTH AND SAFETY MESSAGE

*“We don’t plan on luck to be safe, we plan on good risk management and good decisions”....the Red Team*

**INCIDENT:** Cerro Pelado | **DATE:** Thursday, April 28<sup>th</sup>, 2022

**Major Hazards and Risks:** Human Factors, Heavy Equipment, Chippers

**MY SAFETY** - An important aspect of risk management is an individual’s responsibility for their own health & safety. Even with the best supervision and management, firefighters and incident personnel are required to make personal decisions concerning their safety.

**Dozers and Maintainer Use** - Never assume the operator can see you. Ensure communications are established with operators. Use hand signals if other communications are not available. Approach from the front after you have made eye contact and received acknowledgement from the operator. Do not approach from behind the operators view. Avoid working below heavy equipment.

**Chippers** - All resources working with a chipper are to be briefed on safe operating practices and sign the JHA for chipping operation before working with a chipper. Follow the directions of the qualified chipper operator. Feed material standing from the side with the chipper at full operating speed. Keep hands outside the of the feed chute. Use a push stick to help feed small pieces, do not use hands, and let go and step back as soon as it begins to be pulled into the machine.



**Bear Awareness Helpful Hints**

**Food** - Food and food scraps can attract bears. Do not leave out food, leftovers, wrappers, or peelings on the fire line. If you are staying in a spike camp, do not keep food or toiletries in your tent. NEVER feed a bear.

**Encounters** - If you encounter a bear, stay calm and leave the area slowly.



**Division/Group Assignment List (ICS 204 WF)**  
Controlled Unclassified Information//Basic

<b>1. Incident Name:</b>			<b>3.</b>			
CERRO PELADO			<b>Branch:</b>		<b>Division/Group</b>	
<b>2. Operational Period:</b> 0700-0700			I		A	
Date/Time From: 04/28/2022 0700 THU	Date/Time To: 04/29/2022 0700 FRI					
<b>4. Operations Personnel</b>						
<b>OPERATIONS CHIEF</b>		PETE MYERS, MIKE DAVIS VICKY EDGE, CHAD COOK (T)		<b>BRANCH DIRECTOR</b>		HEATH MORTON
<b>DIVISION/GROUP SUPERVISOR</b>		JOEL BURGETT BLAINE MCKINNON (T)				
<b>5. Resources Assigned this Period</b>						
Strike Team / Task Force / Resource Designator	LWD	Leader	Number Persons	Drop Off PT./Time	Pick Up PT./Time	
O-108 TFLD	05/10	WILL BERNARD	1	JFC/0700	JFC/1900	
C-1 T2IA CALIFORNIA 63	05/07	RAY BATRES	20	JFC/0700	JFC/1900	
C-8 T2IA GRAYBACK	04/28	TIM BREWER	20	JFC/0700	JFC/1900	
C-2 T2 LAVA RIVER	05/07	WILL CONTERAS	20	JFC/0700	JFC/1900	
C-13 T2 MOUNTAINEER CONTRACTING	05/09	JUAN PEREZ	20	JFC/0700	JFC/1900	
O-123 NM MODULE 6		MATT HEFFLER	4	JFC/0700	JFC/1900	
E-129 ENG3 ENGINE1441 NM-BLM	05/06	FORREST PETERMAN	3	JFC/0700	JFC/1900	
E-5 ENG3 STONE MOUNTAIN PROTECTION	05/06	JOHN DICKERSON	4	JFC/0700	JFC/1900	
E-109 ENG4 ARROW FIRE & LAND MANAGEMENT	05/09	STEVE MARROW	3	JFC/0700	JFC/1900	
ENGINE 431 ENG4 SNF		JOE SOUKUP	5	JFC/0700	JFC/1900	
E-107 ENG5 LAPOINT FD	05/09	LANE HARRIS	3	JFC/0700	JFC/1900	
ENGINE 2601 ENG6 MT-BLM		JEFF AUGBUGER	4	JFC/0700	JFC/1900	
LA-6 ENG6		SHRIVER	3	JFC/0700	JFC/1900	
LA-7 ENG6		LIEMER	3	JFC/0700	JFC/1900	
TENDER 26 WTT2 HEMEZ FIRE			2	JFC/0700	JFC/1900	
LA T-5 WTT2		AUSTIN	2	JFC/0700	JFC/1900	
O-8.7 SOF1	05/06	TOMMY HAWKINS	1	JFC/0700	JFC/1900	
LA WTT2 T-1		CROCKETT	2	JFC/0700	JFC/1900	
E-128 LA UTV TYPE 7			2	JFC/0700	JFC/1900	
<b>8. Division/Group Communication Summary</b>						
Function	Channel	RX Frequency N/W	RX Tone/NAC	TX Frequency N/W	TX Tone/NAC	Mode
COMMAND	1	169.7500 N	146.2	167.1000 N	146.2	A
COMMAND	2	169.5375	146.2	164.7125	146.2	A
COMMAND	11	172.3000 N		165.0125 N		A
TACTICAL	5	168.0500 N	146.2	168.0500 N	146.2	A
AIR TO GROUND	13	166.8250 N		166.8250 N		A
<b>9. Prepared By (Resource Unit Leader)</b>		<b>Approved By (Planning Section Chief)</b>		<b>Date</b>		<b>Time</b>
BRITTANY PHILLIPS		MISSY FORDER		04/27/2022		1800

**Division/Group Assignment List (ICS 204 WF)**  
Controlled Unclassified Information//Basic

<b>1. Incident Name:</b>			<b>3.</b>			
CERRO PELADO			<b>Branch:</b>		<b>Division/Group</b>	
<b>2. Operational Period:</b> 0700-0700			<b>I</b>		<b>A</b>	
Date/Time From: 04/28/2022 0700 THU	Date/Time To: 04/29/2022 0700 FRI					
<b>4. Operations Personnel</b>						
<b>OPERATIONS CHIEF</b>	PETE MYERS, MIKE DAVIS VICKY EDGE, CHAD COOK (T)		<b>BRANCH DIRECTOR</b>		HEATH MORTON	
<b>DIVISION/GROUP SUPERVISOR</b>	JOEL BURGETT BLAINE MCKINNON (T)					
<b>5. Resources Assigned this Period</b>						
Strike Team / Task Force / Resource Designator	LWD	Leader	Number Persons	Drop Off PT./Time	Pick Up PT./Time	
O-140 MED 1	05/09	CODY KELLER	2	JFC/0700	JFC/1900	
E-62 AMBU			2	JFC/0700	JFC/1900	
<b>6. Control Operations/Work Assignments:</b>						
<p>Task: Continue to provide engine resource presence for the Community SLP, and improve control lines near SLP structures. Hold and improve handline from the Community SLP to the 10 Q, 10 A, and 10 DB area towards DP 30.</p> <p>Purpose: To reduce the fire threat to the Community SLP, and keep fire progression East of FS-10.</p> <p>End State: Lift evacuations and return residents to community.</p>						
<b>7. Special Instructions:</b>						
<ul style="list-style-type: none"> <li>• Briefing will be held at Jemez Falls Campground 0700.</li> <li>• Coordinate with READ before ground disturbance.</li> <li>• Coordinate with Sandoval County, State Police, and Tribal Nations</li> <li>• Identify impassable roads. With GPS locations in Field Map.</li> <li>• Do not post photos with Archaeological resources that have location information.</li> <li>• Leave all gates as you found them, either opened or closed. If the gate was closed when you arrived, close it as you leave.</li> <li>• Identify IA resources off each division to support IA under TFR.</li> <li>• ** IN THE EVENT OF AN IWI: CONTACT COMMUNICATIONS ON COMMAND</li> </ul>						
<b>8. Division/Group Communication Summary</b>						
Function	Channel	RX Frequency N/W	RX Tone/NAC	TX Frequency N/W	TX Tone/NAC	Mode
COMMAND	1	169.7500 N	146.2	167.1000 N	146.2	A
COMMAND	2	169.5375	146.2	164.7125	146.2	A
COMMAND	11	172.3000 N		165.0125 N		A
TACTICAL	5	168.0500 N	146.2	168.0500 N	146.2	A
AIR TO GROUND	13	166.8250 N		166.8250 N		A
<b>9. Prepared By (Resource Unit Leader)</b>		<b>Approved By (Planning Section Chief)</b>		<b>Date</b>	<b>Time</b>	
BRITTANY PHILLIPS		MISSY FORDER		04/27/2022	1800	



**Division/Group Assignment List (ICS 204 WF)**  
**Controlled Unclassified Information//Basic**

<b>1. Incident Name:</b>			<b>3.</b>			
CERRO PELADO			<b>Branch:</b>		<b>Division/Group</b>	
<b>2. Operational Period:</b> 0700-0700			<b>I</b>		<b>Z</b>	
Date/Time From: 04/28/2022 0700 THU	Date/Time To: 04/29/2022 0700 FRI					
<b>4. Operations Personnel</b>						
<b>OPERATIONS CHIEF</b>		PETE MYERS, MIKE DAVIS VICKY EDGE, CHAD COOK (T)		<b>BRANCH DIRECTOR</b>	HEATH MORTON	
<b>DIVISION/GROUP SUPERVISOR</b>		ANDY PASCARELLA				
<b>5. Resources Assigned this Period</b>						
Strike Team / Task Force / Resource Designator		LWD	Leader	Number Persons	Drop Off PT./Time	Pick Up PT./Time
O-106 TFLD		05/10	CHRISTINE WEIR KOETTER	1	JFC/0700	JFC/1900
C-9 T2 ROCHA		05/08	JORGE DURAN	20	JFC/0700	JFC/1900
C-12 T2 BIRRUETA		05/08	CRISTIAN JUAREZ	20	JFC/0700	JFC/1900
ENGINE 304 ENG3			MUNRO	3	JFC/0700	JFC/1900
E-111 ENG3 MISSOULA CITY FIRE DEPT		05/09	RANDAL THORPE	3	JFC/0700	JFC/1900
E-130 ENG3		05/06	CHRIS BROOKS	5	JFC/0700	JFC/1900
E-131 ENG3 SAN JUAN COUNTY		05/09	AARON AUSTIN	3	JFC/0700	JFC/1900
E-114 WTT2		05/09	WYATT LACKMAN	2	JFC/0700	JFC/1900
E-105 ENG6 - RAMOS EAGLE		05/08	CORBIN LESTER	3	JFC/0700	JFC/1900
E-2 ENG6 DEBEQUE		05/08	VOORHEES	2	JFC/0700	JFC/1900
E-142 ENG6 MT-BDF		05/05	GORDON WEGLEY	4	JFC/0700	JFC/1900
LA WTT2			TBD		JFC/0700	JFC/1900
O-96 SOF1		05/09	DAVE STONE	1	JFC/0700	JFC/1900
O-41 MED 2		05/09	DEAN CARPENDER	2	JFC/0700	JFC/1900
E-59 AMBU		05/10	BILL BOYD	2	JFC/0700	JFC/1900
<b>6. Control Operations/Work Assignments:</b>						
Task: Identify opportunities for containment lines along FS 270C network and East of FS 10. Hold tactical burn and mop up.						
Purpose: Hold fire North of FS 270, FS 270 C network, and East of FS 10.						
<b>8. Division/Group Communication Summary</b>						
Function	Channel	RX Frequency N/W	RX Tone/NAC	TX Frequency N/W	TX Tone/NAC	Mode
COMMAND	2	169.5375 N	146.2	164.7125 N	146.2	A
COMMAND	1	169.7500 N	146.2	167.1000 N	146.2	A
COMMAND	11	172.3000 N		165.0125 N		A
TACTICAL	6	168.2000 N	146.2	168.2000 N	146.2	A
AIR TO GROUND	13	166.8250 N		166.8250 N		A
<b>9. Prepared By (Resource Unit Leader)</b>		<b>Approved By (Planning Section Chief)</b>		<b>Date</b>	<b>Time</b>	
BRITTANY PHILLIPS		MISSY FORDER		04/27/2022	1800	



## Division/Group Assignment List (ICS 204 WF)

Controlled Unclassified Information//Basic

<b>1. Incident Name:</b>			<b>3.</b>			
CERRO PELADO			<b>I</b>	<b>Z</b>		
<b>2. Operational Period:</b> 0700-0700						
Date/Time From: 04/28/2022 0700 THU		Date/Time To: 04/29/2022 0700 FRI				
<b>4. Operations Personnel</b>						
<b>OPERATIONS CHIEF</b>		PETE MYERS, MIKE DAVIS VICKY EDGE, CHAD COOK (T)		<b>BRANCH DIRECTOR</b>		HEATH MORTON
<b>DIVISION/GROUP SUPERVISOR</b>		ANDY PASCARELLA				
<b>6. Control Operations/Work Assignments:</b>						
End State: Hold fire within the identified road system to minimize impact on landscape.						
<b>7. Special Instructions:</b>						
<ul style="list-style-type: none"> <li>Briefing will be held at Jemez Falls Campground 0700.</li> <li>Coordinate with READ before ground disturbance.</li> <li>Coordinate with Sandoval County, State Police, and Tribal Nations</li> <li>Identify impassable roads. With GPS locations in Field Map.</li> <li>Do not post photos with Archaeological resources that have location information.</li> <li>Leave all gates as you found them, either opened or closed. If the gate was closed when you arrived, close it as you leave.</li> <li>Identify IA resources off each division to support IA under TFR.</li> <li><b>** IN THE EVENT OF AN IWI: CONTACT COMMUNICATIONS ON COMMAND</b></li> </ul>						
<b>8. Division/Group Communication Summary</b>						
Function	Channel	RX Frequency N/W	RX Tone/NAC	TX Frequency N/W	TX Tone/NAC	Mode
COMMAND	2	169.5375 N	146.2	164.7125 N	146.2	A
COMMAND	1	169.7500 N	146.2	167.1000 N	146.2	A
COMMAND	11	172.3000 N		165.0125 N		A
TACTICAL	6	168.2000 N	146.2	168.2000 N	146.2	A
AIR TO GROUND	13	166.8250 N		166.8250 N		A
<b>9. Prepared By (Resource Unit Leader)</b>		<b>Approved By (Planning Section Chief)</b>			<b>Date</b>	<b>Time</b>
BRITTANY PHILLIPS		MISSY FORDER			04/27/2022	1800

**Division/Group Assignment List (ICS 204 WF)**  
**Controlled Unclassified Information//Basic**

<b>1. Incident Name:</b>			<b>3.</b>			
CERRO PELADO			<b>Branch:</b>		<b>Division/Group</b>	
<b>2. Operational Period:</b> 0700-0700			<b>I</b>		<b>R</b>	
Date/Time From: 04/28/2022 0700	THU	Date/Time To: 04/29/2022 0700				
<b>4. Operations Personnel</b>						
<b>OPERATIONS CHIEF</b>		PETE MYERS, MIK DAVIS VICKY EDGE, CHAD COOK (T)		<b>BRANCH DIRECTOR</b>		HEATH MORTON
<b>DIVISION/GROUP SUPERVISOR</b>		FRANK ALVES LUKE HELFENSTIEN (T)				
<b>5. Resources Assigned this Period</b>						
Strike Team / Task Force / Resource Designator		LWD	Leader	Number Persons	Drop Off PT./Time	Pick Up PT./Time
C-7 T1 MORMON LAKE IHC		05/08	SARA SWEENEY	21	JFC/0700	JFC/1900
C-14 T2IA TAYLOR		05/08	VERNON JACKSON	19	JFC/0700	JFC/1900
C-3 T2 BLUE MOUNTAIN CONTRACTING		05/10	JORGE PEREZ	20	JFC/0700	JFC/1900
E-106 ENG6 GREY WILDLAND		05/09	JAKE WARDEN	3	JFC/0700	JFC/1900
E-103 DOZ2 WEAVER GRADING		05/09	KEVIN GAINES	2	JFC/0700	JFC/1900
O-17 REAF		05/07	BECKY BAISDEN	1	JFC/0700	JFC/1900
O-117 REAF		05/08	LISA THOMPSON	1	JFC/0700	JFC/1900
O-102 REAF		05/07	JORDAN JARRETT	1	JFC/0700	JFC/1900
O-95 SOF1		05/09	BRAD LIDELL	1	JFC/0700	JFC/1900
O-99 RIMS		05/08	TANNER SMITH	4	JFC/0700	JFC/1900
<b>6. Control Operations/Work Assignments:</b>						
Task: Hold and improve direct firelines. Identify road system for potential containment lines. Improve exiting roads and construct dozer or hand lines as containment lines. Use aviation resources to monitor fire activity in Los Conchas fire footprint.						
Purpose: Keep fire out of private inholdings while lessening fire movement to the South and Southeast						
End State: Lessening the foot print of the Cerro Pelado fire while minimizing the impact to private lands.						
<b>7. Special Instructions:</b>						
<ul style="list-style-type: none"> <li>• Briefing will be held at Jemez Falls Campground 0700.</li> <li>• Coordinate with READ before ground disturbance.</li> <li>• Coordinate with Sandoval County, State Police, and Tribal Nations</li> <li>• Identify impassable roads. With GPS locations in Field Map.</li> <li>• Do not post photos with Archaeological resources that have location information.</li> </ul>						
<b>8. Division/Group Communication Summary</b>						
Function	Channel	RX Frequency N/W	RX Tone/NAC	TX Frequency N/W	TX Tone/NAC	Mode
COMMAND	2	169.5375 N	146.2	164.7125 N	146.2	A
COMMAND	11	172.3000 N		165.0125 N		A
TACTICAL	8	168.2500 N	146.2	168.2500 N	146.2	A
AIR TO GROUND	13	166.8250 N		166.8250 N		A
<b>9. Prepared By (Resource Unit Leader)</b>			<b>Approved By (Planning Section Chief)</b>		<b>Date</b>	<b>Time</b>
BRITTANY PHILLIPS			MISSY FORDER		04/27/2022	1800

**Division/Group Assignment List (ICS 204 WF)**  
Controlled Unclassified Information//Basic

<b>1. Incident Name:</b>			<b>3.</b>			
CERRO PELADO			<b>Branch:</b>		<b>Division/Group</b>	
<b>2. Operational Period:</b> 0700-0700			<b>I</b>		<b>R</b>	
Date/Time From: 04/28/2022 0700	THU	Date/Time To: 04/29/2022 0700				
<b>4. Operations Personnel</b>						
<b>OPERATIONS CHIEF</b>		PETE MYERS, MIK DAVIS VICKY EDGE, CHAD COOK (T)		<b>BRANCH DIRECTOR</b>		HEATH MORTON
<b>DIVISION/GROUP SUPERVISOR</b>		FRANK ALVES LUKE HELFENSTIEN (T)				
<b>7. Special Instructions:</b>						
<ul style="list-style-type: none"> <li>• Leave all gates as you found them, either opened or closed. If the gate was closed when you arrived, close it as you leave.</li> <li>• Identify IA resources off each division to support IA under TFR.</li> <li>• ** IN THE EVENT OF AN IWI: CONTACT COMMUNICATIONS ON COMMAND</li> </ul>						
<b>8. Division/Group Communication Summary</b>						
Function	Channel	RX Frequency N/W	RX Tone/NAC	TX Frequency N/W	TX Tone/NAC	Mode
COMMAND	2	169.5375 N	146.2	164.7125 N	146.2	A
COMMAND	11	172.3000 N		165.0125 N		A
TACTICAL	8	168.2500 N	146.2	168.2500 N	146.2	A
AIR TO GROUND	13	166.8250 N		166.8250 N		A
<b>9. Prepared By (Resource Unit Leader)</b>		<b>Approved By (Planning Section Chief)</b>			<b>Date</b>	<b>Time</b>
BRITTANY PHILLIPS		MISSY FORDER			04/27/2022	1800



**Division/Group Assignment List (ICS 204 WF)**  
Controlled Unclassified Information//Basic

<b>1. Incident Name:</b>			<b>3.</b>			
CERRO PELADO			<b>Branch:</b>		<b>Division/Group</b>	
<b>2. Operational Period:</b> 0700-0700			<b>I</b>		<b>STRUCTURE</b>	
Date/Time From: 04/28/2022 0700 THU	Date/Time To: 04/29/2022 0700 FRI					
<b>4. Operations Personnel</b>						
<b>OPERATIONS CHIEF</b>		PETE MYERS, MIKE DAVIS VICKY EDGE, CHAD COOK (T)		<b>BRANCH DIRECTOR</b>		HEATH MORTON
<b>DIVISION/GROUP SUPERVISOR</b>		CRAIG ROBERTSON				
<b>5. Resources Assigned this Period</b>						
Strike Team / Task Force / Resource Designator		LWD	Leader	Number Persons	Drop Off PT./Time	Pick Up PT./Time
TBD						
<b>6. Control Operations/Work Assignments:</b>						
<p>Task: Identify structures threatened by the Cerro Pelado wildfire and develop a structure protection plan in coordination with the local cooperating fire agencies. Assess Community SLP for hose lay implementation.</p> <p>Purpose: Triage all structures identified for structure protection needs.</p> <p>End State: Threat to identified structures has been reduced as much as practical.</p>						
<b>7. Special Instructions:</b>						
<ul style="list-style-type: none"> <li>• Briefing will be held at Jemez Falls Campground 0700.</li> <li>• Coordinate with READ before ground disturbance.</li> <li>• Coordinate with Sandoval County, State Police, and Tribal Nations</li> <li>• Identify impassable roads. With GPS locations in Field Map.</li> <li>• Do not post photos with Archaeological resources that have location information.</li> <li>• Leave all gates as you found them, either opened or closed. If the gate was closed when you arrived, close it as you leave.</li> <li>• Identify IA resources off each division to support IA and TFR.</li> <li>• ** IN THE EVENT OF AN IWI: CONTACT COMMUNICATIONS ON COMMAND</li> </ul>						
<b>8. Division/Group Communication Summary</b>						
Function	Channel	RX Frequency N/W	RX Tone/NAC	TX Frequency N/W	TX Tone/NAC	Mode
COMMAND	1	169.7500 N	146.2	167.1000 N	146.2	A
COMMAND	2	169.5375 N	146.2	164.7125 N	146.2	A
COMMAND	11	172.3000 N		165.0125 N		A
TACTICAL	7	168.6000 N	146.2	168.6000 N	146.2	A
AIR TO GROUND	13	166.8250 N		166.8250 N		A
<b>9. Prepared By (Resource Unit Leader)</b>		<b>Approved By (Planning Section Chief)</b>			<b>Date</b>	<b>Time</b>
BRITTANY PHILLIPS		MISSY FORDER			04/27/2022	1800

**Division/Group Assignment List (ICS 204 WF)**  
Controlled Unclassified Information//Basic

<b>1. Incident Name:</b>			<b>3.</b>			
CERRO PELADO			<b>Branch:</b>		<b>Division/Group</b>	
<b>2. Operational Period:</b> 0700-0700			I		IA	
Date/Time From: 04/28/2022 0700 THU	Date/Time To: 04/29/2022 0700 FRI					
<b>4. Operations Personnel</b>						
<b>OPERATIONS CHIEF</b>		PETE MYERS, MIKE DAVIS VICKY EDGE, CHAD COOK (T)		<b>BRANCH DIRECTOR</b>		HEATH MORTON
<b>DIVISION/GROUP SUPERVISOR</b>		KRIS SCHROEDER				
<b>5. Resources Assigned this Period</b>						
Strike Team / Task Force / Resource Designator		LWD	Leader	Number Persons	Drop Off PT./Time	Pick Up PT./Time
E-150 ENG6 SANDOVAL COUNTY BRUSH 22		05/10	HARRIS TOYA	3	JFC/0700	JFC/1900
E-140 THE GENERAL		05/10	PAUL ANDERSON	3	JFC/0700	JFC/1900
E-143 ENG6		05/10	AUSTIN STOVER	2	JFC/0700	JFC/1900
E-144 ENG6 GUNNISON FPD		05/11	BEN BRACK	4	JFC/0700	JFC/1900
E-113 WTS2 BIG CEDAR		05/10	BEN ANDERBERG	1	JFC/0700	JFC/1900
E-146 WTT1		05/05	BILL WEST	2	JFC/0700	JFC/1900
E-101 DOZ3		05/11	ERIC BLEVINS	2	JFC/0700	JFC/1900
E-102 DOZ3 BALDWIN FORESTRY		05/11	DAVID BALDWIN	2	JFC/0700	JFC/1900
E-104 DOZ2 CECIL LOGGING		05/10	ROCKY FITHIN	1	JFC/0700	JFC/1900
<b>6. Control Operations/Work Assignments:</b>						
Task: Ready stand by for initial attack. Purpose: Provide initial attack support to assigned response area. End State: Provide initial attack support for the Santa Fe National Forest.						
<b>7. Special Instructions:</b>						
<ul style="list-style-type: none"> <li>Briefing will be held at Jemez Falls Campground 0700.</li> <li>Coordinate with READ before ground disturbance.</li> <li>Coordinate with Sandoval County, State Police, and Tribal Nations</li> <li>Identify impassable roads. With GPS locations in Field Map.</li> <li>Do not post photos with Archaeological resources that have location information.</li> <li>Leave all gates as you found them, either opened or closed. If the gate was closed when you arrived, close it as you leave.</li> <li>Identify IA resources off each division to support IA under TFR.</li> <li>** IN THE EVENT OF AN IWI: CONTACT COMMUNICATIONS ON COMMAND</li> </ul>						
<b>8. Division/Group Communication Summary</b>						
Function	Channel	RX Frequency N/W	RX Tone/NAC	TX Frequency N/W	TX Tone/NAC	Mode
COMMAND	1	169.7500 N	146.2	167.1000 N	146.2	A
COMMAND	2	169.5375 N	146.2	164.7125 N	146.2	A
TACTICAL	9	166.7250 N	146.2	166.7250 N	146.2	A
AIR TO GROUND	12	168.3125 N		168.3125 N		A
<b>9. Prepared By (Resource Unit Leader)</b>		<b>Approved By (Planning Section Chief)</b>			<b>Date</b>	<b>Time</b>




**Division/Group Assignment List (ICS 204 WF)**  
**Controlled Unclassified Information//Basic**

<b>1. Incident Name:</b>				<b>3.</b>		
CERRO PELADO				<b>II</b>	<b>Division/Group</b>  <b>A/Z NIGHT</b>	
<b>2. Operational Period:</b> 0700-0700						
Date/Time From: 04/28/2022 0700 THU		Date/Time To: 04/29/2022 0700 FRI				
<b>4. Operations Personnel</b>						
<b>OPERATIONS CHIEF</b>		PETE MYERS, MIKE DAVIS VICKY EDGE, CHAD COOK (T)		<b>BRANCH DIRECTOR</b>		CORDELL TAYLOR
<b>DIVISION/GROUP SUPERVISOR</b>		AARON EDWARDS				
<b>5. Resources Assigned this Period</b>						
Strike Team / Task Force / Resource Designator		LWD	Leader	Number Persons	Drop Off PT./Time	Pick Up PT./Time
E-110 ENG3 OUTBACK FIREFIGHTING		05/10	JIM REILLY	3	JFC/1900	JFC/0700
E-1 ENG6 CARBONDALE		05/07	SCOTT EVANS	3	JFC/1900	JFC/0700
<b>6. Control Operations/Work Assignments:</b>						
Task: Patrol and monitor fire						
Purpose: Alert operations of any problems						
End State: Ensure quick response as needed						
<b>7. Special Instructions:</b>						
<ul style="list-style-type: none"> <li>• Briefing will be held at Jemez Falls Campground 0700.</li> <li>• Coordinate with READ before ground disturbance.</li> <li>• Coordinate with Sandoval County, State Police, and Tribal Nations</li> <li>• Identify impassable roads. With GPS locations in Field Map.</li> <li>• Do not post photos with Archaeological resources that have location information.</li> <li>• Leave all gates as you found them, either opened or closed. If the gate was closed when you arrived, close it as you leave.</li> <li>• Identify IA resources off each division to support IA under TFR.</li> <li>• ** IN THE EVENT OF AN IWI: CONTACT COMMUNICATIONS ON COMMAND</li> </ul>						
<b>8. Division/Group Communication Summary</b>						
Function	Channel	RX Frequency N/W	RX Tone/NAC	TX Frequency N/W	TX Tone/NAC	Mode
COMMAND	1	169.7500 N	146.2	167.1000 N	146.2	A
COMMAND	2	169.5375 N	146.2	164.7125 N	146.2	A
COMMAND	11	172.3000 N		165.0125 N		A
<b>9. Prepared By (Resource Unit Leader)</b>			<b>Approved By (Planning Section Chief)</b>		<b>Date</b>	<b>Time</b>
BRITTANY PHILLIPS			MISSY FORDER		04/27/2022	1800



INCIDENT RADIO COMMUNICATIONS PLAN I-205		1. INCIDENT NAME		2. DATE/TIME PREPARED		3. OPERATIONAL PERIOD DATE/TIME					
		Cerro Pelado		4/27/2022 1700		04/28/22 0700 - 04/29/22 0700					
4. BASIC RADIO CHANNEL UTILIZATION											
Ch #	Function	Channel Name	Assignment	RX Freq	N/W	RX Tone/NAC	TX Freq	N/W	TX Tone/NAC	Mode Analog (A) Digital (D) Mixed (M)	Remarks
1	Command	CMD 1	DIV A	169.7500	N	146.2	167.1000	N	146.2	A	CERRO PELADO
2	Command	CMD 2	DIV R & Z	169.5375	N	146.2	164.7125	N	146.2	A	ROAD 10/270 INTERSECTION
3	Command	CMD 3	ICP	170.4125	N	146.2	165.9625	N	146.2	A	135 ROAD
4	Unassigned		Unassigned								
5	Tactical	TAC 1	DIV A	168.0500	N	146.2	168.0500	N	146.2	A	
6	Tactical	TAC 2	DIV Z	168.2000	N	146.2	168.2000	N	146.2	A	
7	Tactical	TAC 3	STRUCTURAL PROTECTION	168.6000	N	146.2	168.6000	N	146.2	A	
8	Tactical	TAC 4	DIV R	168.2500	N	146.2	168.2500	N	146.2	A	
9	Tactical	TAC 5	IA	166.7250	N	146.2	166.7250	N	146.2	A	
10	Tactical	TAC 6	REM TEAM	166.7750	N	146.2	166.7750	N	146.2	A	Night Shift
11	Command	PELADO	All Divisions	172.3000	N		165.0125	N	131.8	A	Santa Fe Dispatch
12	Air Ground	A/G 51		168.3125	N		168.3125	N		A	Initial Attack / Local Air to Ground
13	Air Ground	A/G PRI		166.8250	N		166.8250	N		A	
14	Air Ground	A/G SEC		168.7375	N		168.7375	N		A	
15	Medivac	VMED 28		155.3400	N		155.3400	N	156.7	A	Air Ambulance
16	AIRGUARD			168.6250	N		168.6250	N	110.9	A	
<b>5. Special Instructions:</b> USE HUMAN REPEATER WHEN NECESSARY. IF ASSIGNED COMMAND CHANNEL DOES NOT WORK TRY THE OTHER ONE.											
<b>6. I-205 Prepared By:</b> Communications Unit Leader				<b>Name:</b> Barry Stearns				<b>Signature:</b> <i>Barry A Stearns</i>			

<b>1. INCIDENT NAME:</b> <b>Cerro Pelado</b>		<b>2. OPS PERIOD DATE:</b> 4/28/22	<b>START TIME:</b> 0900	<b>END TIME:</b> 2030	<b>SUNRISE</b> 0616	<b>SUNSET</b> 1947
---	--	---------------------------------------	----------------------------	--------------------------	------------------------	-----------------------

<b>3. REMARKS and RISK MITIGATIONS:</b> All missions will be analyzed in terms of hazards and risks. Insure to brief for all IA missions to include new frequencies, ground contacts and other aircraft. High level to low level recon of each new LZ/Dipsite 		<b>4. READY ALERT AIRCRAFT:</b> IA 7HE See Medical Plan	<b>5. TFR # 2/2366</b> Freq: 118.825 Surface ≥ 14,000' MSL 6 nautical miles from 35° 49' 00" x 106° 31' 00"
---	--	---	---

Retardant Avoidance areas:

6. PERSONNEL	NAME	PHONE #	7. FREQUENCIES	AM	FM	8. FIXED-WING
AOBD	Lynne Howard	678-699-3266	A/A (Fixed/TFR)	118.8250		Air Attack: 78NA / 690B / Base: ABQ
ASGS	John Mason	865-336-6664	A/A (Rotor)	121.3250		Lead Planes/Airtankers - Order through Air Attack If air attack is not up---order through AOBD.
ATGS ATGS-T	Greg Haxby Adam Soper	208-709-2459	A/G Command		166.8250	TA49 35° 49.6644'N x 106° 19.0908'W
HEBM (Santa Fe)	Brian Kleisen	505-467-9351	A/G Tactical		168.7375	Santa Fe Airport (SAF) 35° 37.02'N x 106° 05'.22'W
HMGB (7HE)	Josh Brookshire	505-670-9385	DECK (Santa Fe)		163.100	
HMGB (3CH)	Ben Thayer	208-830-1636				
Santa Fe Dispatch - Aircraft	Darrel	505-438-5600	AIRGUARD (emergency only)		168.6250 TX Tone110.9	Costs to: <a href="mailto:2022.cerropelado.finance@firenet.gov">2022.cerropelado.finance@firenet.gov</a>

**9.HELICOPTERS**

FAA N#	T Y	MAKE/ MODEL	BASE	AVAIL	START	REMARKS	FAA N#	T Y	MAKE/ MODEL	BASE	AVAIL	START	REMARKS
7HE	3	AS350B3	TA49	0800	0830	Not Assigned Forest IA Ship	Guard (Lobo 29)	1	UH60	Santa Fe (SAF)	----	----	Bucket / ANG Base
473CH	1	CH-47D	Santa Fe (SAF)	0800	0830	Bucket	Guard (Lobo 31)	1	UH60	Santa Fe (SAF)	0800	0830	Bucket / ANG Base
Guard (Lobo 18)	1	UH60	Santa Fe (SAF)	0800	0830	Bucket / ANG Base							

## **CERRO PELADO FIRE LIAISON CONTACT INFORMATION**

Paul Stevens – LOFR (Lead) 252-216-6316 [npsobxranger@yahoo.com](mailto:npsobxranger@yahoo.com)  
Stephanie Allison – LOFR(t) 662-763-8374 [stephanie.allison@usda.gov](mailto:stephanie.allison@usda.gov)  
Rhea Whalen – LOFR(t) 843-412-3571 [rhea.whalen@usda.gov](mailto:rhea.whalen@usda.gov)

---

## **CERRO PELADO FIRE INFORMATION**

<https://inciweb.nwcg.gov/incident/8075/>

<https://www.facebook.com/2022.cerropeladofire>

<https://twitter.com/SantaFeNF>

Phone-505-312-4590

We are looking for pictures of the Fire especially those of firefighters and equipment in action, structure protection and scenic shots of the fire. Please mail to [2022.CerroPelado@firenet.gov](mailto:2022.CerroPelado@firenet.gov)

---



## **Wildfire Chief's Letter of Intent 2022**

<https://www.fs.usda.gov/sites/default/files/Chiefs-WildfireIntentLetter2022-Signed.pdf>



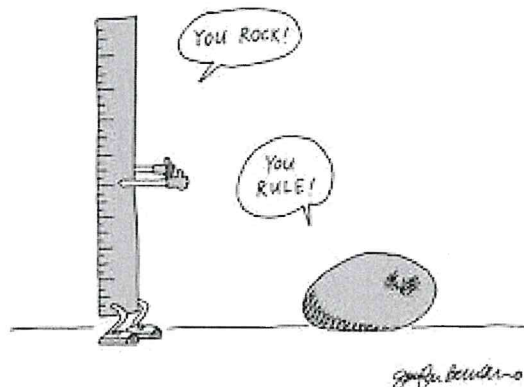
**Cerro Pelado Fire  
Human Resources Message  
April 28, 2022**

Thank you all for the mutual respect you are exhibiting on this incident. We all know how important it is to treat each other appropriately and with respect. Let's make sure we are serving as examples for each other.

Please exercise tolerance, show gratitude, practice compassion and exhibit leadership.

Just for today

- Do not have expectations about how you should be treated
- Be as friendly as you can to the people around you
- Do not insist that everything you do is perfect
- Be grateful for your health, your work, your family, your country



**“When we treat people merely as they are, they will remain as they are. When we treat them as if they were as they should be, they will become what they should be”.**

**-Thomas Monson-**

*Janine Summy, Human Resource Specialist, 509-429-1206, HRSPSummy@gmail.com*



# ***Training Specialist Cerro Pelado***

**The Training Specialist is working remotely. Training Specialist contact information for the Cerro Pelado Fire is:**

- Robert Rivelle
- Most important; If any Trainee or Trainer has any questions or concerns, call/text: 707.498.1761 **anytime**.
- Email: robert\_rivelle@nps.gov

**How to register as a Trainee:**

1. Use the QR code below to register. If you're unable to register using the QR code, please call 707.498.1761 anytime.
2. Once registered, you will receive text and email updates.

**How to close-out your training assignment:**

1. **Trainer:** Complete and Evaluation Record in the back of the Position Task Book and make as many entries as possible within the individual tasks. Discuss this with your Trainee.
2. **Trainer:** Complete an individual performance rating (ICS 225) and go over the performance rating with your Trainee.
3. **Trainee:** Text a photo or email your individual performance rating (ICS 225) to the Training Specialist.
4. **Trainee:** Complete the Trainee exit questions at the QR code below.
5. **Trainee:** Once 1-4 are completed, the Trainee and the Training Specialist will have a brief conversation to discuss the Task Book and assignment with the Trainee.
6. **Done**, except for safe travels home!

**Trainee Registration**



**Trainee Exit Questions**





## Logistics

### Ordering Process

Orders should be sent to the below ORDM's by 1300 for Cache Orders. For all other orders please have orders to ORDM's by 0800 hours or 1500 hours. Orders should be routed as shown below:

Chad\_wilberger@firenet.gov

<b>Logistics:</b>	Chris Revels 864-490-4192 Jane Artega 530-957-3558
<b>Facilities Unit Contact:</b>	Base Camp: Jimmy Rickard 706-308-2015 ICP: Susanne Adams 715-702-918
<b>Ground Support:</b>	Mike Post 305-849-1322 or Jay Aron 401-316-8730
<b>Supply Unit</b>	Tom Piper 727-514-5513
<b>Medical Unit</b>	Fred Adler 479-238-6064 or Nick Arnett 408-888-1900
<b>Security Manager:</b>	Karen Bradford 423-851-4206
<b>Food Unit</b>	Clyde Leggins 828-334-2340
<b>Communications</b>	Barry Stearns 954-553-6544

### Fuel Truck Hours 0630 to 0900 and 1800 to 2100

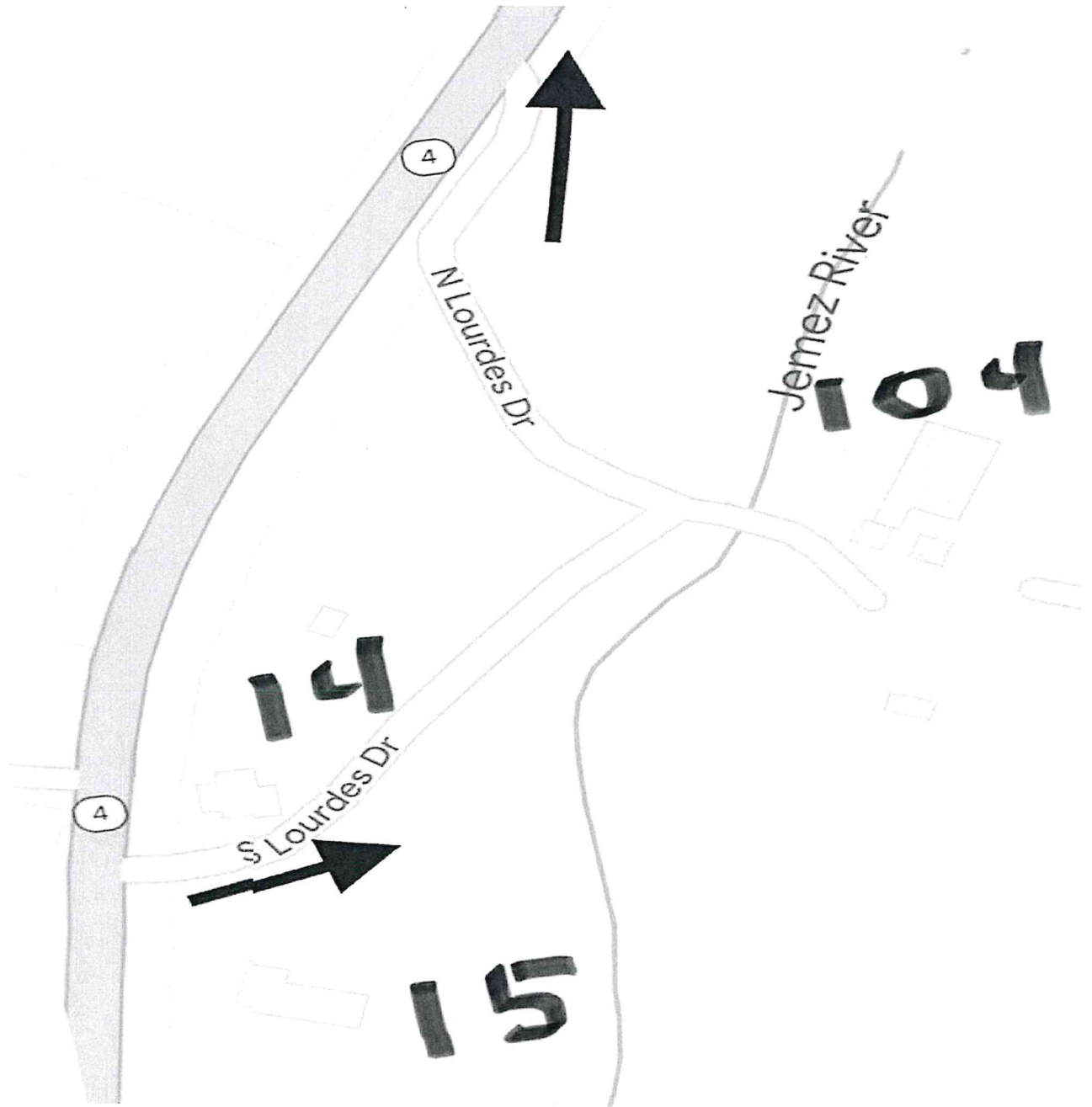
Showers are located at the Base Camp located on Forest Service Road 376 (mile marker 35).

Shower Hours: 0600 to 1200 and 1400 to 2200

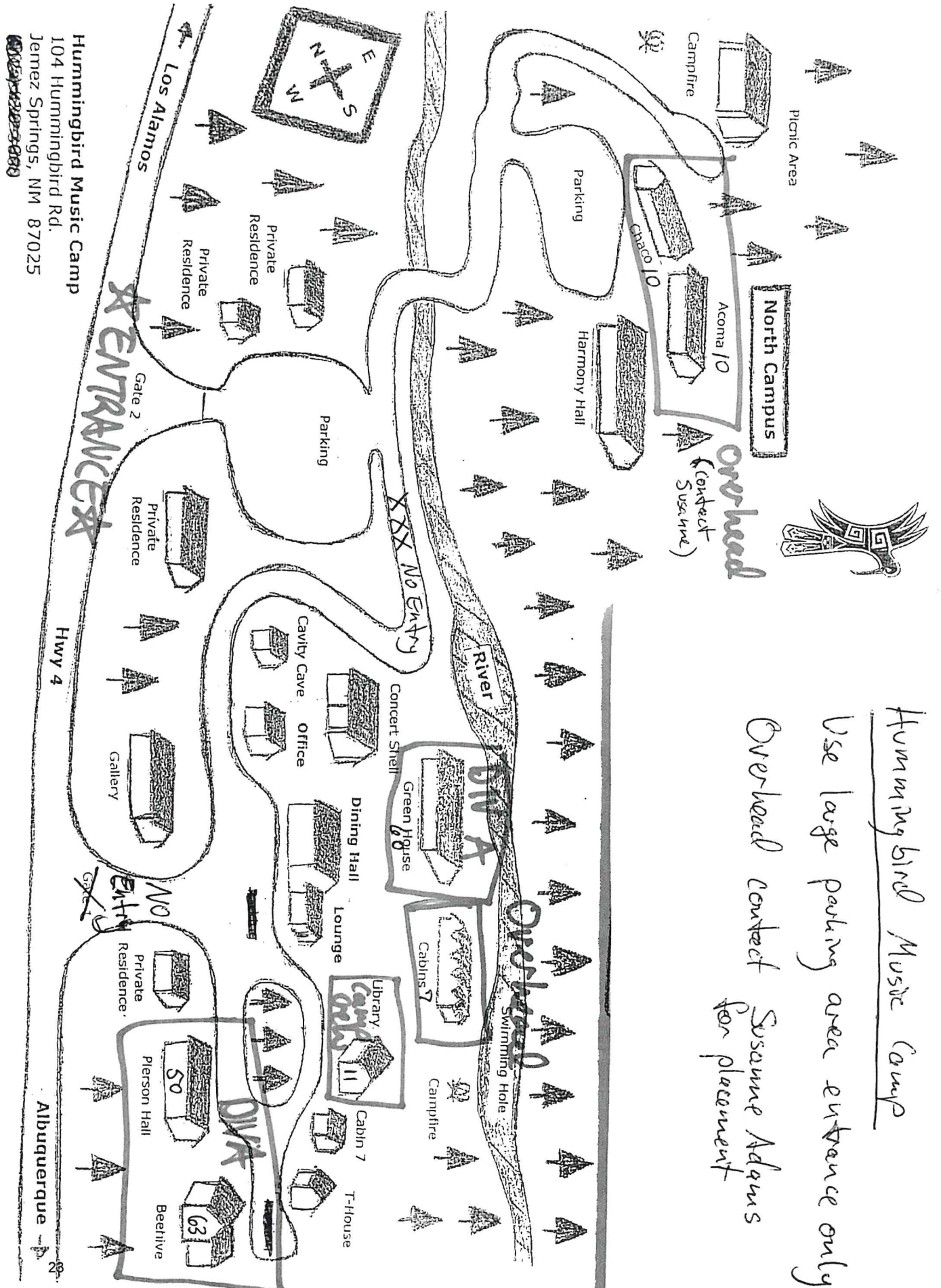
All resources should vacate Jemez Falls Campground on April 28. Resources will be assigned per the instructions on the next page. Division supervisors please contact Susanne Adams if we do not have enough rooms assigned to your division

Dinner will be served at the Hummingbird Music Camp on Thursday and Friday. Breakfast and Lunches will be available at the same location Friday and Saturday morning.

# Wind Event Sleeping Arrangements







Hummingbird Music Camp  
 104 Hummingbird Rd.  
 Jemez Springs, NM 87025



Hummingbird Music Camp

Use large parking area entrance only

Overhead contact Susanna Adams  
 for placement

VIA COELLI

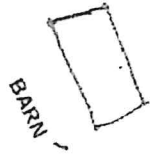
MONASTERY

TO RIVER

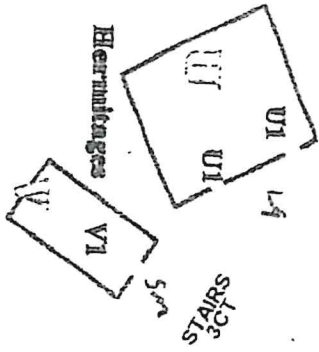
West

DIRT ROAD

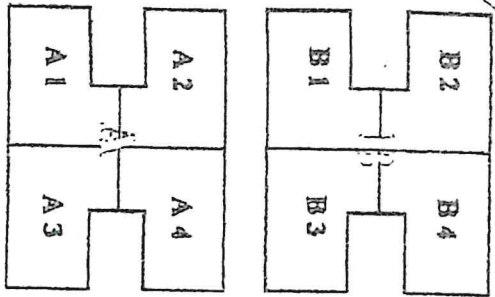
TO MEDITATION BRIDGE



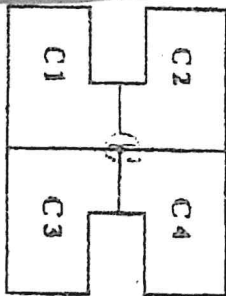
SOFT



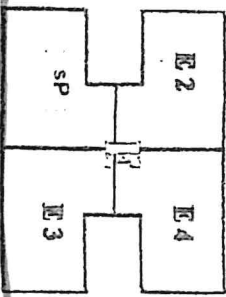
PARKING Unassigned 24



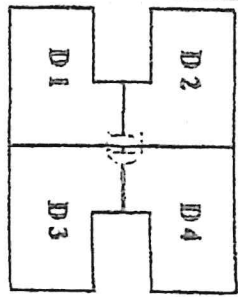
STAIRS 5CT



STAIRS 5CT

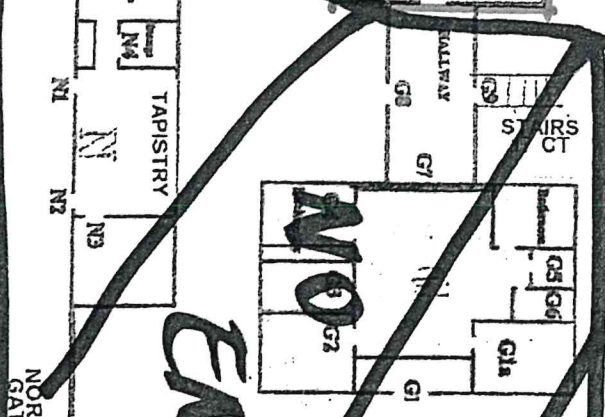
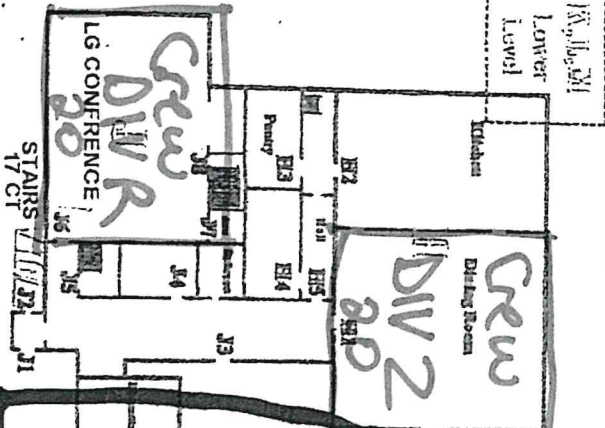


STAIRS 6CT

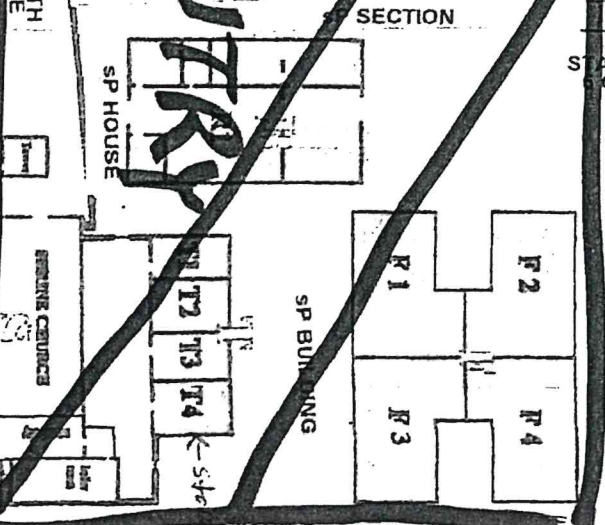


North

DIV 12, DIV 24

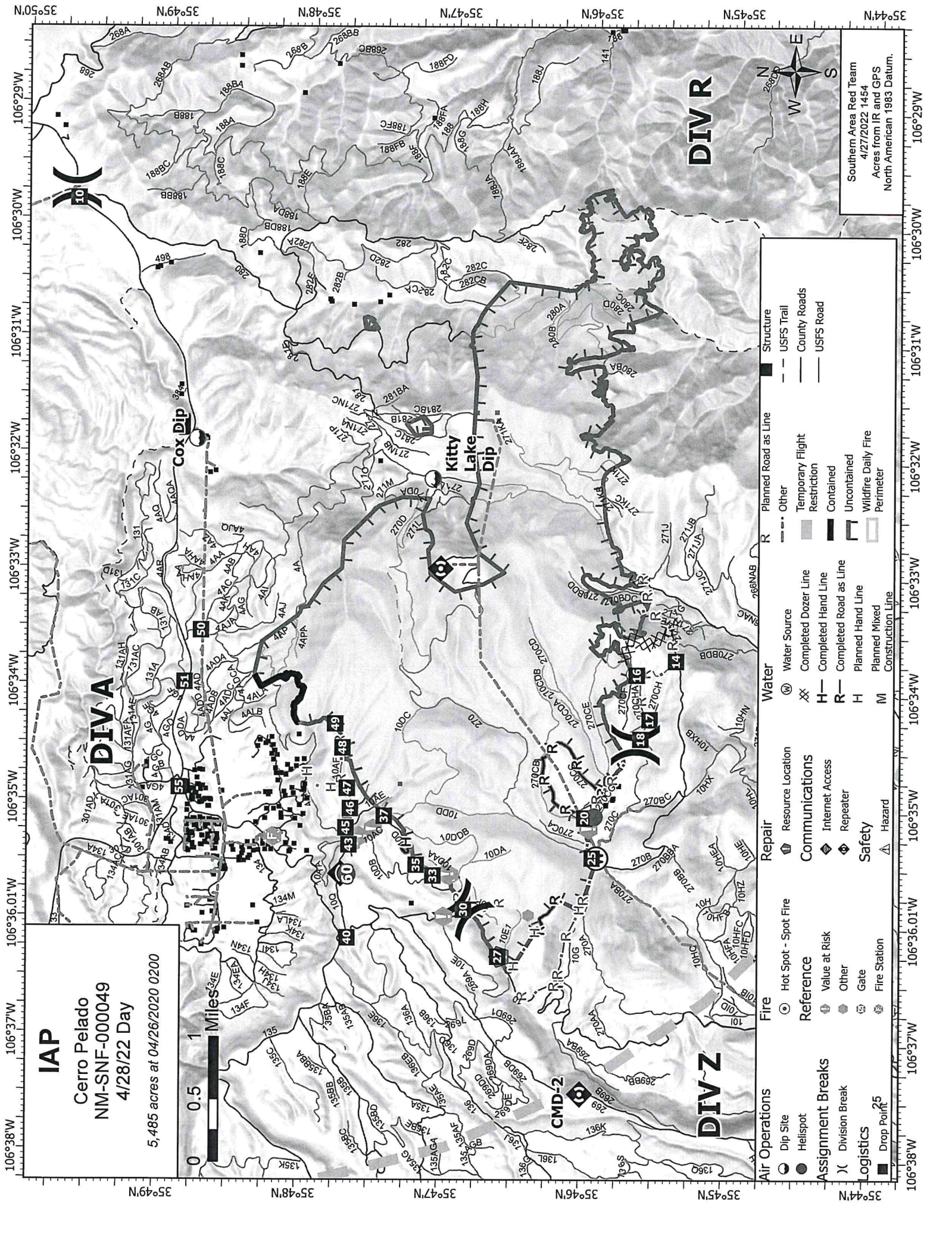


SECTION



New Mexico Route 4



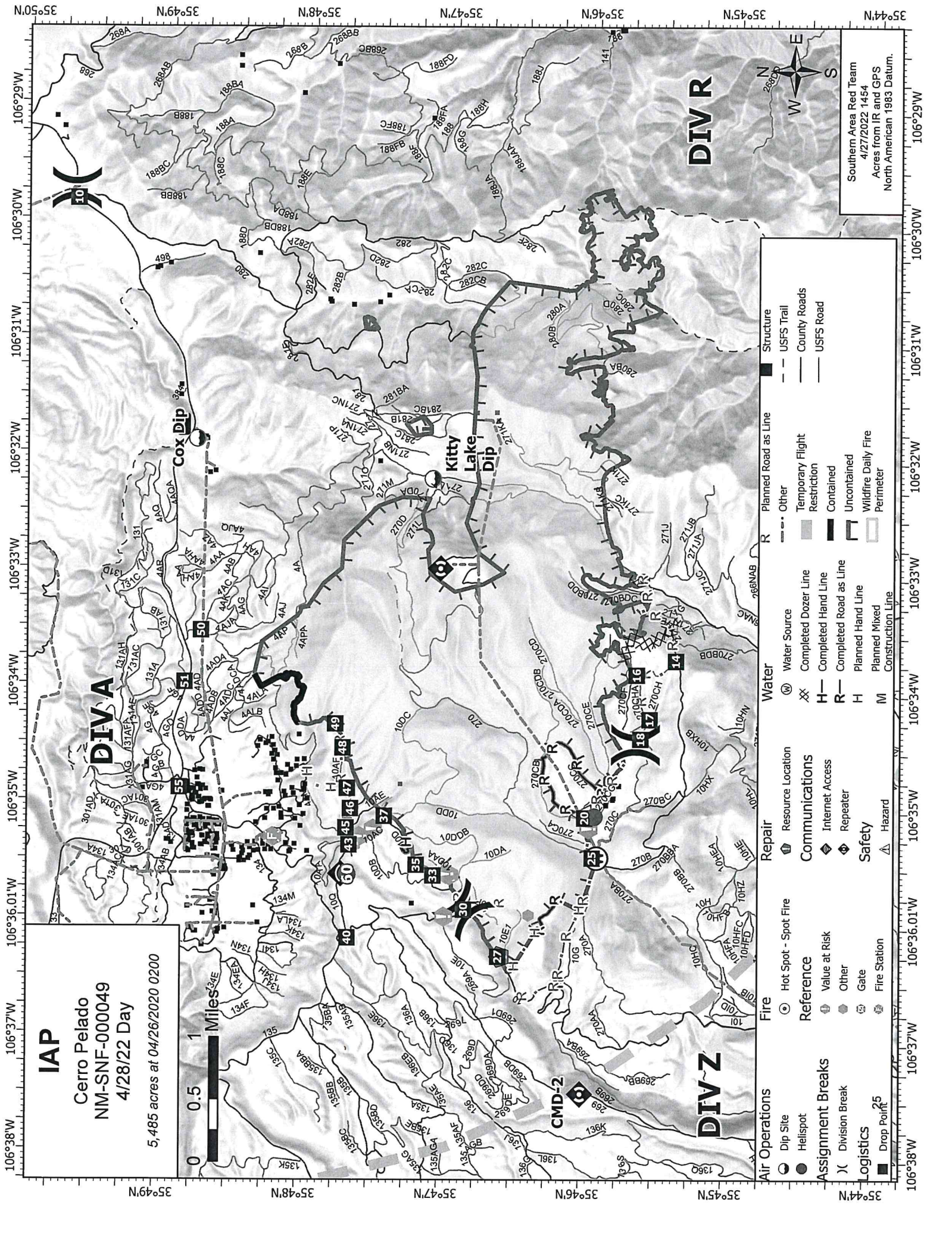


**IAP**  
 Cerro Pelado  
 NM-SNF-000049  
 4/28/22 Day  
 5,485 acres at 04/26/2020 0200



Southern Area Red Team  
 4/27/2022 1454  
 Acres from IR and GPS  
 North American 1983 Datum.

	<b>Air Operations</b>		<b>Fire</b>		<b>Repair</b>		<b>Water</b>		<b>Structure</b>
	<b>Assignment Breaks</b>		<b>Reference</b>		<b>Communications</b>		<b>Completed Dozer Line</b>		<b>USFS Trail</b>
	<b>Logistics</b>		<b>Safety</b>		<b>Internet Access</b>		<b>Completed Hand Line</b>		<b>County Road</b>
	<b>Drop Point</b>		<b>Hazard</b>		<b>Fire Station</b>		<b>Planned Hand Line</b>		<b>USFS Road</b>
			<b>Fire Station</b>		<b>Planned Mixed Construction Line</b>		<b>Planned Road as Line</b>		
					<b>Temporary Flight Restriction</b>		<b>Other</b>		







# MEDICAL PLAN (ICS 206 WF)

Controlled Unclassified Information//Basic

<b>1. Incident/Project Name</b>				<b>2. Operational Period</b>				
Cerro Pelado Fire				04/28-29/2022 0700-1900				
<b>2. Medical Aid Stations</b>								
<b>Medical Aid Stations</b>		<b>Location</b>			<b>Advanced Life Support (ALS)</b>			
					Yes		No	
ERL Medical Trailer		Base Camp						
<b>3. Ambulance Services</b>								
For local 911 resources, call Sandoval County Dispatch (505) 896-7300								
<b>Name</b>		<b>Location</b>		<b>Phone</b>		<b>Advanced Life Support (ALS)</b>		
						Yes      No		
MED 30 (4WD)		Division A		Cerro Communications		X		
Ambulance 1 (24-hr)		Division Z, DP-25		Cerro Communications		X		
Ambulance 2		Division A DP-40		Cerro Communications		X		
Jemez Pueblo Ambulance Service		4535 NM 4, Jemez Pueblo, NM		Sandoval Cty (above)		X		
MED 31		550 Zia Pueblo Road, NM		Sandoval Cty (above)		X		
<b>4. Air Ambulance Services</b>								
Sandoval County Dispatch (505) 896-7300 A/G Frequency VMed28 155.34 Tx Tone 156.7								
<b>Name</b>		<b>Location</b>			<b>Advanced Life Support (ALS)</b>			
					Yes		No	
Classic Air Medical		Los Alamos – Night Vision			X			
Tri-State Care Flight		Santa Fe – Night Vision			X			
UNM Lifeguard		Albuquerque – Night Vision			X			
Bernalillo County Sheriff 505-798-7000		A-Star: Day short haul, 24-hour extrication/relocation			X			
<b>5. Hospitals</b>								
<b>Name/Address</b>		<b>GPS Datum – WGS 84 Coordinate Standard</b>		<b>Travel Time</b>		<b>Phone</b>	<b>Helipad</b>	<b>Level of Care Facility</b>
				Air      Gnd			Yes      No	
Los Alamos Medical Center 3917 West Road Los Alamos, NM		Lat:	35 52.91' N	30 min	40 min	(505) 231-2602 Supv (505) 662-4201	X	Level 3 Trauma
		Long:	106 19.13' W					
		VHF:						
University of New Mexico 2211 Lomas Blvd. NE Albuquerque, NM		Lat:	35 05.27' N	30 min	2 hrs	(505) 272-2111	X	Level 1 Trauma Burn Stabilization
		Long:	106 37.11' W					
		VHF:						
Christus St. Vincent Medical Center 455 St. Michael's Drive Santa Fe NM		Lat:	35 39.56' N	30 min	2 hrs	(505) 913-3361	X	Level 3 Trauma
		Long:	105 56.73' W					
		VHF:						
University of Colorado 12605 E. 16th Avenue, 3rd floor, Aurora, CO		Lat:	39 44.56' N	3.5 hrs	7 hrs	(844) 285-4555	X	Burn Center
		Long:	104 50.52' W					
		VHF:						
<b>6. Clinics</b>								
Trinity Urgent Care 1460 Trinity Dr Los Alamos, NM		Open 0900-1845 Every Day (505) 412-6033						

**IWI IC Responsibilities:**

- Take charge of the scene – inform the Division Supervisor and Communications that you are the IWI IC and establish radio communications(frequencies, channels). Identify the emergency name – Division A medical, etc.
- Assign or begin patient assessment (Medical Incident Report - MIR) and first aid. Request additional medical resources on division/branch or across incident. Transmit MIR patient information to Communications.
- Determine patient transportation through consultation with line medical personnel and Medical Unit Leader. Consider transportation time, risk to personnel, destination facility and available operational resources. If air transport is chosen, implement the plan for alternative transportation in the event aircraft cannot complete the mission. Order transportation resources through Communications as early as possible.
- Notify Communications as resources arrive and any patient status changes. Names of injured or deceased individuals will not be transmitted on the radio.
- Initiate documentation for future investigation; if a line safety officer is available, assign them to lead documentation. Do not move deceased individuals, gear or personal effects except to accomplish rescue work or protect the safety of others. Obtain written documentation of witnesses. The Unit Log, ICS 214, may be used for the initial documentation, but a subsequent narrative will be required.
- As appropriate, conduct an After Action Review to determine successes, areas to improve and lessons learned.



**MEDICAL PLAN (ICS 206 WF)**  
**Controlled Unclassified Information//Basic**

7. Division   Branch   Group	Area Location Capability		
<b>Div A</b>	EMS Responders & Capability:	Med 30 Ambulance (ALS) Ambulance 2 (ALS) DP-40 Arnaldo Rivera 520-431-1611 Medic Team 1 (ALS) - Cody Keller 479-409-9439	
	ETA for Ambulance to Scene:		
	Air:	40 min.	
	Ground:	1 hr.	
<b>Div I</b>	EMS Responders & Capability:		
	ETA for Ambulance to Scene:		
	Air:	40 min.	
	Ground:	1 hr.	
<b>Div R</b>	EMS Responders & Capability:		
	ETA for Ambulance to Scene:		
	Air:	40 min.	
	Ground:	1 hr.	
<b>Div Z</b>	EMS Responders & Capability:	Medic Team 2 (ALS) - Dean Carpenter 479-236-1174 REMS-1 (ALS) Tanner Smith 541-556-9045 Ambulance 1 (ERL) DP-25 William Boyd 717-586-3652	
	ETA for Ambulance to Scene:		
	Air:	40 min.	
	Ground:	1 hr.	
<b>Structure</b>	EMS Responders & Capability:		
	ETA for Ambulance to Scene:		
	Air:	40 min.	
	Ground:	1 hr.	
<b>Div A/Z Night</b>	EMS Responders & Capability:	Ambulance 1 (ERL) DP-25 Sage Stewart 479-806-0860 Med Team 3 Jeff Molen 318-751-1087	
	ETA for Ambulance to Scene:		
	Air:	40 min.	
	Ground:	1 hr.	
<b>ICP</b>	EMS Responders & Capability:	Fred Adler (EMT), Nick Arnett (EMTF)	
	Equipment Available on Scene:	BLS	
	Medical Emergency #:	(479) 238-6064 or (408) 888-1900	
	ETA for Ambulance to Scene:		
	Air:	20 min	
	Ground:	30 min	
8. Prepared By (Medical Unit Leader)		9. Date/Time	10. Reviewed By (Safety Officer)
Fred Adler, MEDL, Nick Arnett MEDL(t)		4/27/2022 1800	Tony Rivers SOFR  4/27/2022 1800

# MEDICAL PLAN (ICS 206 WF)

Controlled Unclassified Information//Basic

## Medical Incident Report

**FOR A NON-EMERGENCY INCIDENT, WORK THROUGH CHAIN OF COMMAND TO REPORT AND TRANSPORT INJURED PERSONNEL AS NECESSARY.**

**FOR A MEDICAL EMERGENCY: IDENTIFY ON SCENE INCIDENT COMMANDER BY NAME AND POSITION AND ANNOUNCE "MEDICAL EMERGENCY" TO INITIATE RESPONSE FROM IMT COMMUNICATIONS/DISPATCH.**

**Use the following items to communicate situation to communications/dispatch.**

**1. CONTACT COMMUNICATIONS / DISPATCH (Verify correct frequency prior to starting report)**

*Ex: "Communications, Div. Alpha. Stand-by for Emergency Traffic."*

**2. INCIDENT STATUS: Provide incident summary (including number of patients) and command structure.**

*Ex: "Communications, I have a Red priority patient, unconscious, struck by a falling tree. Requesting air ambulance to Forest Road 1 at (Lat./Long.) This will be the Trout Meadow Medical, IC is TFLD Jones. EMT Smith is providing medical care."*

Severity of Emergency / Transport Priority	<input type="checkbox"/> <b>RED / PRIORITY 1 Life or limb threatening injury or illness. Evacuation need is IMMEDIATE</b> <i>Ex: Unconscious, difficulty breathing, bleeding severely, 2° – 3° burns more than 4 palm sizes, heat stroke, disoriented.</i> <input type="checkbox"/> <b>YELLOW / PRIORITY 2 Serious Injury or illness. Evacuation may be DELAYED if necessary.</b> <i>Ex: Significant trauma, unable to walk, 2° – 3° burns not more than 1-3 palm sizes.</i> <input type="checkbox"/> <b>GREEN / PRIORITY 3 Minor Injury or illness. Non-Emergency transport</b> <i>Ex: Sprains, strains, minor heat-related illness.</i>	
Nature of Injury or Illness & Mechanism of Injury		<i>Brief Summary of Injury or Illness (Ex: Unconscious, Struck by Falling Tree)</i>
Transport Request		<i>Air Ambulance / Short Haul/Hoist Ground Ambulance / Other</i>
Patient Location		<i>Descriptive Location &amp; Lat. / Long. (WGS84)</i>
Incident Name		<i>Geographic Name + "Medical" (Ex: Trout Meadow Medical)</i>
On-Scene Incident Commander		<i>Name of on-scene IC of Incident within an Incident (Ex: TFLD Jones)</i>
Patient Care		<i>Name of Care Provider (Ex: EMT Smith)</i>

**3. INITIAL PATIENT ASSESSMENT: Complete this section for each patient as applicable (start with the most severe patient)**

Patient Assessment: See IRPG page 106

Treatment:

**4. TRANSPORT PLAN:**

Evacuation Location (if different): (Descriptive Location (drop point, intersection, etc.) or Lat. / Long.) Patient's ETA to Evacuation Location:

Helispot / Extraction Site Size and Hazards:

**5. ADDITIONAL RESOURCES / EQUIPMENT NEEDS:**

*Example: Paramedic/EMT, Crews, Immobilization Devices, AED, Oxygen, Trauma Bag, IV/Fluid(s), Splints, Rope rescue, Wheeled litter, HAZMAT, Extrication*

**6. COMMUNICATIONS: Identify State Air/Ground EMS Frequencies and Hospital Contacts as applicable**

Function	Channel Name/Number	Receive (RX)	Tone/NAC *	Transmit (TX)	Tone/NAC *
COMMAND					
AIR-TO-GRND					
TACTICAL					

**7. CONTINGENCY: Considerations:** If primary options fail, what actions can be implemented in conjunction with primary evacuation method? Be thinking ahead.

**8. ADDITIONAL INFORMATION:** Updates/Changes, etc.

**REMEMBER:** Confirm ETA's of resources ordered. Act according to your level of training. Be Alert. Keep Calm. Think Clearly. Act Decisively.