



# Cerro Pelado

**NM-SNF-000049, P3PK47 (0310)**

**Operational Period:  
Friday, April 29, 2022  
0700 – April 30, 2022 0700**

Check - In



Avenza Maps



IAP

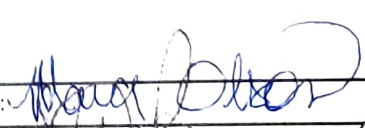
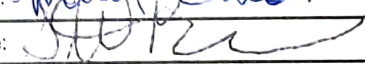


Cerro Pelado Communication Phone  
561-527-0804



**SA Red Team  
Incident Commander – Steve Parrish**

## INCIDENT OBJECTIVES (ICS 202)

<b>1. Incident Name:</b>		<b>2. Operational Period:</b> 0700-0700	
CERRO PELADO		Date/Time From: 04/29/2022 0700 FRI	Date/Time To: 04/30/2022 0700 SAT
<b>3. Objective(s):</b>			
Management Objectives			
<p>1) Protection of human life and safety is the first priority for all actions taken on a wildfire and can overrule all other strategic/management objectives and incident requirements.</p> <p>2) Base management decisions on meeting objectives while also minimizing the risk of COVID-19 exposures to responders and the public. COVID-19 considerations may alter how you meet goals but should not lead to higher risk tactics.</p> <p>3) Maintain and strengthen relationships with the Santa Fe National Forest, private landowners, the public, cooperators and partners by providing timely and accurate information.</p> <p>4) Protect the unique attributes of impacted watersheds through actions that minimize sedimentation and invasive species movement.</p> <p>5) Protect impact to cultural resources through consultation with local forest specialists.</p>			
Control Objectives			
<p>1) Protection of human life and safety is the first priority for all actions taken and shall override all other incident control objectives. Evaluate risk vs. benefit in strategic and tactical planning and only commit operational resources to actions that have the highest probability of success.</p> <p>2) Keep fire out of Jemez Canyon.</p> <p>3) Keep fire East of Forest Road (FR) 10; Southeast of Community SLP; South of State Route (SR) 4; East of FR's 282 &amp; 280; and North of FR 270.</p> <p>4) Minimize retardant impacts to Jemez Natural Recreation Area.</p> <p>5) Protect values at risk in the Valles Caldera National Preserve including watersheds, visitor and administrative infrastructure, historic structures, cultural resources, and important wildlife habitats.</p> <p>6) Provide initial attack resources to respond to any new ignitions within the TFR area to limit potential size and growth.</p>			
<b>4. Operational Period Command Emphasis:</b>			
Stop, Think, Discuss then Act, and ensure LCES is in place prior to engaging the fire or Initial Response fire.			
The Cerro Pelado fire receives a strategic, risk-based response, commensurate with the threats and opportunities, and uses the full spectrum of management actions, that consider fire and fuel conditions, weather, values at risk, and resources available.			
<b>General Situational Awareness:</b>			
<ul style="list-style-type: none"> <li>• Continued low RHs</li> <li>• No predicted precipitation for several days</li> </ul>			
<b>WEATHER DISCUSSION:</b> Unusually early start to fire season. Critical to extreme fire weather for the next several days. Entire area is experiencing extended drought. Please see daily weather forecast for detailed report.			
<b>7. Prepared by:</b> MARG OLSON		<b>Position/Title:</b> PLANNING SECTION CHIEF	<b>Signature:</b> 
<b>8. Approved by Incident Commander:</b>		<b>Name:</b> STEVE PARRISH	<b>Signature:</b> 
ICS 202		IAP Page	Date/Time: 04/28/2022 1800

## ORGANIZATION ASSIGNMENT LIST (ICS 203)

<b>1. Incident Name:</b>		<b>2. Operational Period:</b> 0700-0700		
CERRO PELADO		Date/Time From: 04/29/2022 0700 FRI	Date/Time To: 04/30/2022 0700 SAT	
<b>3. Incident Commander(s) and Command Staff:</b>		READ BAISDEN, BECKY; THOMPSON, LISA		
IC/UC	PARRISH, STEVE G	<b>6. Logistics Section:</b>		
DEPUTY	PEARSON, PAT			
SAFETY OFFICER	RIVERS, TONY; HAWKINS, TOMMY; LIDDELL, BRAD; STONE, DAVID	CHIEF	REVELS, CHRIS; ARTEAGA, JANE	
INFORMATION OFFICER	HIBBARD, CATHERINE; AURIEMMO, LESLIE, STRAUER, BONNIE; NICHOLS, JOHN; ENGLE, JASON (T)	SUPPLY UNIT	PIPER, TOM	
LIAISON OFFICER	STEVENS, PAUL; ALLISON, STEPHANIE (T); WHALEN, RHEA (T)	FACILITIES UNIT	ADAMS, SUSANNE; RICKARD, JAMES (T)	
<b>4. Agency/Organization Representative(s):</b>		GROUND SUPPORT UNIT	JOHNSON, ROBERT; MIKE POST	
		COMMUNICATIONS UNIT	STEARNS, BARRY; RADZIVILL, DAVID (T)	
<b>Agency/Organization</b>	<b>Name</b>	MEDICAL UNIT	ADLER, FRED; ARNETTE, NICK	
USFS SANTA FE	CRESS, DEBBIE; MARSHALL, JEREMY; ELMORE, LANCE (FMO); YEN, LESLEY	SECURITY UNIT	BRADFORD, KAREN L; FAGERMAN, DAVIN	
NEW MEXICO FORESTRY DIVISION	CRANE, LAWRENCE	FOOD UNIT	LOWE, JAMES	
NPS VALLES CALDERA	SILVA-BANUELOS, JORGE	<b>7. Operations Section:</b>		
NPS BANDELIER	RODGERS, MARLA; THIVENER, JUSTIN	OPS SECTION CHIEF	MYERS, PETER; DAVIS, MIKE; RAMSAY, JOHN	
TRIBAL LIAISON	MONTES, REUBEN	PLANNING OPS	EDGE, VICK; COOK, CHAD (T)	
LOS ALAMOS NATIONAL LABORATORY	NIETO, RICH	<b>Branch</b>	<b>I</b>	
IARR FEDERAL RESOURCES NM AND AZ	GIBBS, PAUL	BRANCH DIRECTOR	MORTON, HEATH	
<b>5. Planning Section:</b>		DIVISION/GROUP	A	BURGETT, JOEL; MCKINNON, BLAINE (T)
		CHIEF	FORDER, MISSY; OLSON, MARG	
RESOURCES UNIT	PHILLIPS, BRITTANY B; AUBUCHON, RICH; SOBIESKI, SUE (VIRTUAL) (T)	DIVISION/GROUP	M	UNSTAFFED
SITUATION UNIT	KETT, SUSAN R	DIVISION/GROUP	Z	PASCARELLA, ANDY
DEMOBILIZATION UNIT	THOMAS, DONNA L	DIVISION/GROUP	R	ALVES, FRANK; HELFFENSTIEN, LUKE (T)
FIRE BEHAVIOR ANALYST	COONS, ALLISON; WARD, MIKE (T)	DIVISION/GROUP	STRUCTURE	ROBERTSON, CRAIG
HUMAN RESOURCE SPECIALIST	SUMMY, JANINE	DIVISION/GROUP	IA	SCHROEDER, KRIS
TRAINING SPECIALIST	RIVELLE, RICHARD	<b>Branch</b>	<b>II</b>	
GIS SPECIALIST	BARNES, TOMMY M; KIRSCH, ANDY; SHELLEY, MICHAEL; GATES, KATHERINE ELIZABETH (T)	BRANCH DIRECTOR	TAYLOR, CORDELL	
TECHNOLOGY SUPPORT SPECIALIST	FARMER, TONY; PADDOCK, BRIAN; WEBB, KELLY (T)	DIVISION/GROUP	A/Z NIGHT	EDWARDS, AARON
INCIDENT METEOROLOGIST	STEARNS, SCOTT	<b>7b. Air Operations Branch:</b>		
READ	SILVA, ANDRE; PITTENGER, DAVE;	AIR OPS BRANCH DIRECTOR	HOWARD, LYNN	
<b>9. Prepared By:</b>		AIR SUPPORT SUPERVISOR	MASON, JOHN	
		HELIBASE MANAGER	KLEISEN, BRIAN	
<b>Name:</b>	MARG OLSON	<b>8. Finance/Administration Section:</b>		
<b>Position/Title:</b>	PLANNING SECTION CHIEF	CHIEF	MEREDITH, JAMES M; WARNER, JOHN R	
<b>Signature:</b>		TIME UNIT	WINKLER, KIMBERLY	
<b>ICS 203</b>	<b>IAP Page</b>	PROCUREMENT UNIT	PELCH, GEMAA	
		COMPENSATION UNIT	LOWDER, DIANE	
		COST UNIT	TRAVIS, DIANE	
		<b>9. Date/Time:</b> 04/28/2022 1800		



To: All Incident Personnel, Cerro Pelado Fire

As Southern Area National Type I Incident Commander, I am committed to a policy of “zero tolerance” of inappropriate behavior during incident operations. Any form of harassment, discriminatory practices, or disrespectful behavior will not be tolerated. Known or reported acts will be dealt with appropriately.

I am particularly concerned about the perception that alcohol has a place in any of the Incident facilities. It is not appropriate to indulge in alcoholic beverages during any fire assignment.

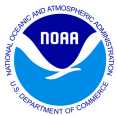
The National Team from the Southern Region has a policy of “NO ALCOHOL” from the time of dispatch until the time of physical release from the Incident. Members of the Team voluntarily comply with this policy; all incident personnel will be expected to do so also.

We endorse, support, and expect an attitude of mutual respect for all Incident personnel and the public we serve. We also, endorse the attitude and work ethic that places “Safety First, every time on every Incident.” We expect nothing less.

/s/Steve Parrish

Incident Commander

SAIMT 1



# INCIDENT Weather Forecast



**Forecast No:** 6  
**Prediction For:** Friday  
**Shift Date:** April 29, 2022  
**Forecast Issued:** April 28, 2022 at 1800

**Name of Incident:** Cerro Pelado Fire  
**Unit:** Santa Fe NF  
**Incident Meteorologist:** Scott Stearns  
 (208) 577-1617

**Discussion:** West winds strengthen and turn northwest as a dry cold front pushes through this morning. Existing dry air will combine with these winds, leading to CRITICAL conditions across the region. The strongest winds are likely to occur just after noon, bringing cooler (slightly below normal temperatures) into the area. Saturday, a brief ridge of high pressure allows temperatures to warm back to near normal in the wake of the cold front, but winds will relax.

### Forecast for Today:

**\*\*\*RED FLAG WARNING 0900-2100 for strong winds and low RHs\*\*\***

#### Sky/Weather:

Sunny with a cold front passage

#### Jemez Springs 8,000'

#### Cerro Pelado Pk 9,400'

**Max Temperature:** 63 57 °F

**Min RH:** 10 12 %

**Wind (20 FT):** Inversion breaking between 0900 and 1000 as a cold front passes turning winds from west to northwest. Strongest northwest winds will occur at or just after noon.

... NW 18 NW 20 mph

... Gusts: 35 Gusts: 40 mph

**Haines Index:** 4 4

**LAL:** 1 1

**Chance of Precipitation:** 0 0 %

**Tonight's Min Temperature:** 35 27 °F

**Tonight's Max RH:** 35 30 %

**Tonight's Wind (20 FT):** Weak inversion setting in between 2100 and 2200. Winds will turn north after 1900 and slow, but remain slightly gusty through 0200.

... N 5 NNW 10 mph

... Gusts: 15 Gusts: 25 mph

**Tonight's Haines Index:** 4 4

**Tonight's LAL:** 1 1

**Tonight's Chnc of Precip:** 0 0 %

### Forecast for Saturday:

#### Sky/Weather:

Mostly sunny

#### Jemez Springs 8,000'

#### Cerro Pelado Pk 9,400'

**Max / Min Temperature:** 67 39 61 32 °F

**Min / Max RH:** 8 30 9 30 %

**Wind (20 FT):** Weak inversion breaks around 1000.

... WSW 5 W 8 mph

... Gusts: 15 Gusts: 20 mph



**Haines Index:** 6 **LAL:** 1 **Precip Chance:** 0

**Extended Outlook:** Sunday brings another day of slightly breezy conditions ahead of a potential cold front. Meanwhile, the forecast remains dry. Another frontal passage is possible again on Tuesday night or Wednesday.

		<u>Max T</u>	<u>Min T</u>	<u>Min RH</u>	<u>Max RH</u>	<u>Ridge Winds @ 1500</u>	<u>Weather</u>
8,600'	<b>Sun:</b>	71	40	8	30	SW @ 12 G28	
	<b>Mon:</b>	67	38	9	30	W @ 11 G25	
	<b>Tue:</b>	72	39	9	25	SW @ 14 G30	

## FIRE BEHAVIOR FORECAST

<b>FORECAST NUMBER:</b> 07	<b>TYPE OF FIRE:</b> Wildland, Type 1
<b>FIRE NAME:</b> Cerro Pelado	<b>OPERATIONAL PERIOD:</b> Day Shift
<b>DATE ISSUED:</b> 4/28/22 <b>TIME ISSUED:</b> 1800	<b>SHIFT DATE:</b> Friday, April 29, 2022
<b>UNIT:</b> Santa Fe NF	<b>SIGNED:</b> Mike Ward, FBAN (t)

<b>WEATHER SUMMARY:</b>	<b>Fire Environment &amp; Danger Information</b>	
<p><b>Local Thresholds – Watch Outs</b> Min RH &lt; 13%, Winds &gt; 20 mph, Temp &gt; 80, Heavy Fuels &lt; 5%</p> <p><b>Today's Significant Fire Weather:</b> <b>!!!! RED FLAG WARNINGS !!!!</b> <b>Strong gusting winds, Single Digit Humidity and Haines Index of 5.</b></p>	 SNF West Pocket Card	 SWCC Fire Danger Page

### FIRE BEHAVIOR:

**GENERAL:**

Very Active fire behavior is expected today on the East side of the fire. Strong winds and Haines index of 5 will create conditions for rapid fire growth and intensity, particularly where winds, slope and drainages align. Single and group torching possible with long range spotting likely.

Current Fire Environment Conditions:

Fine Dead Fuel Moisture = 5%, 1,000 Hour Fuel Moisture = 11%, Live Shrub Moisture = 82%  
ERC's remain around the 90<sup>th</sup> percentile @ Jemez RAWs, but at or near maximum value for this date.

**Fire Behavior based on MAXIMUM values for the fuel models shown, exposed fuels on steep slope.**

Fuel Model	Rate of Spread	Flame Length
Slash w/ Grass/Shrub	14-30 chains/hour	11-19 feet
Timber	6-16 chains/hour	7-10 feet

Spotting from ridge top torching trees up to up to **1 mile during wind gusts**. Probability of Ignition = **70 to 96%**. In **one hour** new spot fires or ignitions can reach **8-19 acres**.

**Specific Areas of Concern:**

**Alpha and Zulu**– very low humidity's and high winds will increase fire intensity in already hot areas from recent burnouts. Wind alignment with San Juan drainage will increase fire intensity and spread potential along the 10 and 270 road.

**Romeo**: East side of the fire in the Las Conchas fire scar will continue to actively burn and move to the east. Continued burning of heavies and duff in the recently burned areas off of the 270 road system. Pockets of unburned fuels may exhibit very active burning with single and group torching possible. Long range spotting up to a mile is possible.

**AIR OPERATIONS:**

Mostly sunny skies with some wind gusts, but a good day for aviation operations. Moderate smoke production at times may cause limited visibility.

**SAFETY: Potential for erratic/ extreme fire behavior!**

**Escape routes and Safety zones need to be identified and communicated to all personnel.**

*Send any fire behavior observations or photos to: [Michael.d.ward@usda.gov](mailto:Michael.d.ward@usda.gov), 470-446-2247*





## HEALTH AND SAFETY MESSAGE

*“We don’t plan on luck to be safe, we plan on sound risk management and good decisions.....the Red Team*

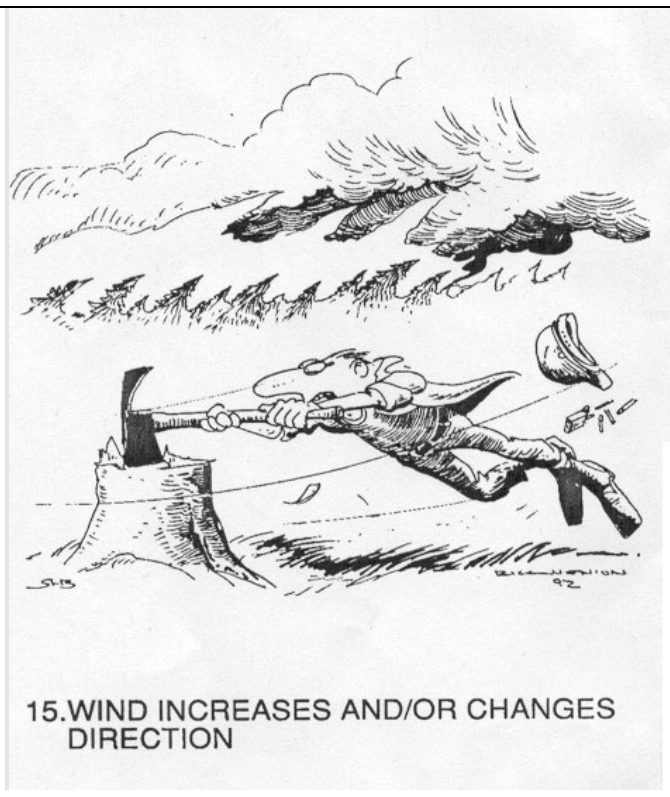
<b>INCIDENT:</b> Cerro Pelado Fire	<b>DATE:</b> Friday, April 29, 2022
------------------------------------	-------------------------------------

**Major Hazards & Risks:** Critical Fire Weather, Increased Local Traffic, Hazard Trees

**Critical Fire Weather** – The four critical weather elements are low RH, strong surface wind, unstable air, and drought. We will experience all four of these today with Red Flag Warnings. *Keep informed on fire weather conditions and forecasts.*

**Increased Local Traffic** – As we return to SET evacuation in the SLP and surrounding communities, some of the local residents will be returning home. This will increase our traffic in the fire area. Be patient, show respect and slow down when traveling through these communities. Highway 4 is reopened, which will increase traffic on that main transportation route. Use caution, Drive Defensively.

**Hazard Trees** – Both dead and live green trees are one of the most common risks encountered on the fireline. All firefighters should frequently survey their work area for potential hazard trees. High winds downed many green trees in the last wind event. Maintain situation awareness, look up and around, post a look out in potential danger.



### STANDARD FIREFIGHTING ORDERS

1. Keep informed on fire weather conditions and forecasts.
2. Know what your fire is doing at all times.
3. Base all actions on current and expected behavior of the fire.
4. Identify escape routes and safety zones, and make them known.
5. Post lookouts when there is possible danger.
6. Be alert. Keep calm. Think clearly. Act decisively.
7. Maintain prompt communications with your forces, your supervisor, and adjoining forces.
8. Give clear instructions and be sure they are understood.
9. Maintain control of your forces at all times.
10. Fight fire aggressively, having provided for safety first.

### WATCH OUT SITUATIONS

1. Fire not scouted and sized up.
2. In country not seen in daylight.
3. Safety zones and escape routes not identified.
4. Unfamiliar with weather and local factors influencing fire behavior.
5. Uninformed on strategy, tactics, and hazards.
6. Instructions and assignments not clear.
7. No communication link with crewmembers or supervisor.
8. Constructing line without safe anchor point.
9. Building fireline downhill with fire below.
10. Attempting frontal assault on fire.
11. Unburned fuel between you and fire.
12. Cannot see main fire; not in contact with someone who can.
13. On a hillside where rolling material can ignite fuel below.
14. Weather becoming hotter and drier.
15. Wind increases and/or changes direction.
16. Getting frequent spot fires across line.
17. Terrain and fuels make escape to safety zones difficult.
18. Taking a nap near fireline.

*Red Team Safety Officers: Tony Rivers, Tommy Hawkins, Brad Lidell, Dave Stone*

**Division/Group Assignment List (ICS 204 WF)**  
**Controlled Unclassified Information//Basic**

<b>1. Incident Name:</b>			<b>3.</b>			
CERRO PELADO			<b>Branch:</b>		<b>Division/Group</b>	
<b>2. Operational Period:</b> 0700-0700			<b>I</b>		<b>A</b>	
Date/Time From: 04/29/2022 0700 FRI		Date/Time To: 04/30/2022 0700 SAT				
<b>4. Operations Personnel</b>						
<b>OPERATIONS CHIEF</b>		P. MYERS, M. DAVIS V. EDGE, C. COOK (T), J. RAMSAY (T)		<b>BRANCH DIRECTOR</b>		HEATH MORTON
<b>DIVISION/GROUP SUPERVISOR</b>		JOEL BURGETT BLAINE MCKINNON (T)		<b>SAFETY</b>		TONY RIVERS
<b>5. Resources Assigned this Period</b>						
Strike Team / Task Force / Resource Designator		LWD	Leader	Number Persons	Drop Off PT./Time	Pick Up PT./Time
C-1 T2IA CALIFORNIA 63		05/07	RAY BATRES	20	HMC/0700	HMC/1900
C-13 T2 MOUNTAINEER CONTRACTING		05/09	JUAN PEREZ	20	HMC/0700	HMC/1900
O-123 NM MODULE 6		05/07	MATT HEFFLER	4	HMC/0700	HMC/1900
E-5 ENG3 STONE MOUNTAIN PROTECTION		05/06	JOHN DICKERSON	4	HMC/0700	HMC/1900
E-129 ENG3 ENGINE1441 NM-BLM		05/06	FORREST PETERMAN	3	HMC/0700	HMC/1900
E-109 ENG4 ARROW FIRE & LAND MANAGEMENT		05/09	STEVE MARROW	3	HMC/0700	HMC/1900
E-107 ENG5 LAPOINT FD		05/09	LANE HARRIS	3	HMC/0700	HMC/1900
E-141 ENG6 310 DUST CONTROL		05/11	CHAD MORRIS	3	HMC/0700	HMC/1900
E-155 ENG6 LA-7			LIEMER	3	HMC/0700	HMC/1900
WTT1 LA T-1			CROCKETT	2	HMC/0700	HMC/1900
WTT2 TENDER 26 HEMEZ FIRE				2	HMC/0700	HMC/1900
WTT2 LA T-5			AUSTIN	2	HMC/0700	HMC/1900
E-128 UTV TYPE 7 LA		05/05	KELLY STERNA	2	HMC/0700	HMC/1900
O-140 MED 1		05/09	CODY KELLER	2	HMC/0700	HMC/1900
E-62 AMBU		05/09	AMOLDO RIVERA	2	HMC/0700	HMC/1900
<b>6. Control Operations/Work Assignments:</b>						
<p>Task: Continue to provide engine resource presence for the Community SLP, and mop up control lines near SLP structures. Hold and mop up handline from the Community SLP to the 10 Q, 10 A, and 10 DB area towards DP 30.</p>						
<b>8. Division/Group Communication Summary</b>						
Function	Channel	RX Frequency N/W	RX Tone/NAC	TX Frequency N/W	TX Tone/NAC	Mode
COMMAND	1	169.7500 N	146.2	167.1000 N	146.2	A
COMMAND	2	169.5375	146.2	164.7125	146.2	A
COMMAND	11	172.3000 N		165.0125 N		A
TACTICAL	5	168.0500 N	146.2	168.0500 N	146.2	A
AIR TO GROUND	13	166.8250 N		166.8250 N		A
<b>9. Prepared By (Resource Unit Leader)</b>			<b>Approved By (Planning Section Chief)</b>		<b>Date</b>	<b>Time</b>
BRITTANY PHILLIPS			MISSY FORDER		04/28/2022	1800



## Division/Group Assignment List (ICS 204 WF)

Controlled Unclassified Information//Basic

<b>1. Incident Name:</b>				<b>3.</b>			
CERRO PELADO				<b>I</b>		<b>A</b>	
<b>2. Operational Period:</b> 0700-0700							
Date/Time From: 04/29/2022 0700 FRI		Date/Time To: 04/30/2022 0700 SAT					
<b>4. Operations Personnel</b>							
<b>OPERATIONS CHIEF</b>		P. MYERS, M. DAVIS V. EDGE, C. COOK (T), J. RAMSAY (T)		<b>BRANCH DIRECTOR</b>		HEATH MORTON	
<b>DIVISION/GROUP SUPERVISOR</b>		JOEL BURGETT BLAINE MCKINNON (T)		<b>SAFETY</b>		TONY RIVERS	
<b>6. Control Operations/Work Assignments:</b>							
Purpose: To reduce the fire threat to the Community SLP, and keep fire progression East of FS-10.							
End State: Lift evacuations and return residents to community SLP, and fire progression East of FS 16.							
<b>7. Special Instructions:</b>							
<ul style="list-style-type: none"> <li>Briefing will be held at Hummingbird music camp 0700.</li> <li>Coordinate with READ before ground disturbance.</li> <li>Coordinate with Sandoval County, State Police, and Tribal Nations</li> <li>Identify impassable roads with GPS locations in Field Map.</li> <li>Do not post photos with Archaeological resources that have location information.</li> <li>Leave all gates as you found them, either opened or closed. If the gate was closed when you arrived, close it as you leave.</li> <li>Identify IA resources off each division to support IA under TFR.</li> <li><b>** IN THE EVENT OF AN IWI: CONTACT COMMUNICATIONS ON COMMAND</b></li> </ul>							
<b>8. Division/Group Communication Summary</b>							
Function	Channel	RX Frequency N/W	RX Tone/NAC	TX Frequency N/W	TX Tone/NAC	Mode	
COMMAND	1	169.7500 N	146.2	167.1000 N	146.2	A	
COMMAND	2	169.5375	146.2	164.7125	146.2	A	
COMMAND	11	172.3000 N		165.0125 N		A	
TACTICAL	5	168.0500 N	146.2	168.0500 N	146.2	A	
AIR TO GROUND	13	166.8250 N		166.8250 N		A	
<b>9. Prepared By (Resource Unit Leader)</b>			<b>Approved By (Planning Section Chief)</b>			<b>Date</b>	<b>Time</b>
BRITTANY PHILLIPS			MISSY FORDER			04/28/2022	1800

**Division/Group Assignment List (ICS 204 WF)**  
**Controlled Unclassified Information//Basic**

<b>1. Incident Name:</b>			<b>3.</b>			
CERRO PELADO			<b>Branch:</b>		<b>Division/Group</b>	
<b>2. Operational Period:</b> 0700-0700			<b>I</b>		<b>Z</b>	
Date/Time From: 04/29/2022 0700 FRI		Date/Time To: 04/30/2022 0700 SAT				
<b>4. Operations Personnel</b>						
<b>OPERATIONS CHIEF</b>		P. MYERS, M. DAVIS VICKY EDGE, CHAD COOK (T), JOHN		<b>BRANCH DIRECTOR</b>		HEATH MORTON
<b>DIVISION/GROUP SUPERVISOR</b>		ANDY PASCARELLA		<b>SAFETY</b>		DAVE STONE
<b>5. Resources Assigned this Period</b>						
Strike Team / Task Force / Resource Designator		LWD	Leader	Number Persons	Drop Off PT./Time	Pick Up PT./Time
O-106 TFLD		05/10	CHRISTINE WEIR KOETTER	1	HMC/0700	HMC/1900
C-12 T2 BIRRUETA		05/08	CRISTIAN JUAREZ	20	HMC/0700	HMC/1900
ENG3 ENGINE 304			MUNRO	3	HMC/0700	HMC/1900
E-111 ENG3 MISSOULA CITY FIRE DEPT		05/09	RANDAL THORPE	3	HMC/0700	HMC/1900
E-130 ENG3 COCONINO		05/06	CHRIS BROOKS	5	HMC/0700	HMC/1900
E-131 ENG3 SAN JUAN COUNTY		05/09	ARIAN AUSTIN	3	HMC/0700	HMC/1900
ENG4 ENGINE 631 SNF				5	HMC/0700	HMC/1900
E-2 ENG6 DEBEQUE		05/08	VOORHEES	2	HMC/0700	HMC/1900
E-105 ENG6 RAMOS EAGLE		05/08	CORBIN LESTER	3	HMC/0700	HMC/1900
E-142 ENG6 MT-BDF		05/05	GORDON WEGLEY	4	HMC/0700	HMC/1900
E-9 WTT2 TOUGH EQUIPMENT		05/09	JOHN CULTRIN	1	HMC/0700	HMC/1900
E-114 WTT2 COWBOY		05/09	WYATT LACKMAN	2	HMC/0700	HMC/1900
O-141 MED 2		05/09	DEAN CARPENTER	2	HMC/0700	HMC/1900
E-59 AMBU		05/10	BILL BOYD	2	HMC/0700	HMC/1900
<b>6. Control Operations/Work Assignments:</b>						
Task: Mop up 50 feet along FS 10, FS 270, FS 270C, and handlines. Improve lines as needed. Continue chipping operation.						
Purpose: Hold fire North of FS 270, FS 270 C network, and East of FS 10.						
End State: Hold fire within the identified road system to minimize impact on landscape.						
<b>7. Special Instructions:</b>						
<b>8. Division/Group Communication Summary</b>						
Function	Channel	RX Frequency N/W	RX Tone/NAC	TX Frequency N/W	TX Tone/NAC	Mode
COMMAND	2	169.5375 N	146.2	164.7125 N	146.2	A
COMMAND	1	169.7500 N	146.2	167.1000 N	146.2	A
COMMAND	11	172.3000 N		165.0125 N		A
TACTICAL	6	168.2000 N	146.2	168.2000 N	146.2	A
AIR TO GROUND	13	166.8250 N		166.8250 N		A
<b>9. Prepared By (Resource Unit Leader)</b>			<b>Approved By (Planning Section Chief)</b>		<b>Date</b>	<b>Time</b>
BRITTANY PHILLIPS			MISSY FORDER		04/28/2022	1800

**Division/Group Assignment List (ICS 204 WF)**  
**Controlled Unclassified Information//Basic**

<b>1. Incident Name:</b>		<b>3.</b>	
CERRO PELADO		<b>Branch:</b>  <b>I</b>	<b>Division/Group</b>  <b>Z</b>
<b>2. Operational Period:</b> 0700-0700			
Date/Time From: 04/29/2022 0700 FRI	Date/Time To: 04/30/2022 0700 SAT		
<b>4. Operations Personnel</b>			
<b>OPERATIONS CHIEF</b>	P. MYERS, M. DAVIS VICKY EDGE, CHAD COOK (T), JOHN	<b>BRANCH DIRECTOR</b>	HEATH MORTON
<b>DIVISION/GROUP SUPERVISOR</b>	ANDY PASCARELLA	<b>SAFETY</b>	DAVE STONE

**7. Special Instructions:**

- Briefing will be held at Hummingbird music camp 0700.
- Coordinate with READ before ground disturbance.
- Coordinate with Sandoval County, State Police, and Tribal Nations
- Identify impassable roads with GPS locations in Field Map.
- Do not post photos with Archaeological resources that have location information.
- Leave all gates as you found them, either opened or closed. If the gate was closed when you arrived, close it as you leave.
- Identify IA resources off each division to support IA under TFR.
- \*\* IN THE EVENT OF AN IWI: CONTACT COMMUNICATIONS ON COMMAND

<b>8. Division/Group Communication Summary</b>						
Function	Channel	RX Frequency N/W	RX Tone/NAC	TX Frequency N/W	TX Tone/NAC	Mode
COMMAND	2	169.5375 N	146.2	164.7125 N	146.2	A
COMMAND	1	169.7500 N	146.2	167.1000 N	146.2	A
COMMAND	11	172.3000 N		165.0125 N		A
TACTICAL	6	168.2000 N	146.2	168.2000 N	146.2	A
AIR TO GROUND	13	166.8250 N		166.8250 N		A

<b>9. Prepared By (Resource Unit Leader)</b>		<b>Approved By (Planning Section Chief)</b>		<b>Date</b>	<b>Time</b>
BRITTANY PHILLIPS		MISSY FORDER		04/28/2022	1800

**Division/Group Assignment List (ICS 204 WF)**  
**Controlled Unclassified Information//Basic**

<b>1. Incident Name:</b>			<b>3.</b>			
CERRO PELADO			<b>Branch:</b>		<b>Division/Group</b>	
<b>2. Operational Period:</b> 0700-0700			<b>I</b>		<b>R</b>	
Date/Time From: 04/29/2022 0700 FRI		Date/Time To: 04/30/2022 0700 SAT				
<b>4. Operations Personnel</b>						
<b>OPERATIONS CHIEF</b>		P. MYERS, M. DAVIS V. EDGE, C. COOK (T), J. RAMSAY (T)		<b>BRANCH DIRECTOR</b>		HEATH MORTON
<b>DIVISION/GROUP SUPERVISOR</b>		FRANK ALVES LUKE HELFENSTIEN (T)		<b>SAFETY</b>		BRAD LIDELL
<b>5. Resources Assigned this Period</b>						
Strike Team / Task Force / Resource Designator		LWD	Leader	Number Persons	Drop Off PT./Time	Pick Up PT./Time
C-7 T1 MORMON LAKE IHC		05/08	SARA SWEENEY	21	HMC/0700	HMC/1900
C-14 T2IA TAYLOR		05/08	VERNON JACKSON	19	HMC/0700	HMC/1900
C-3 T2 BLUE MOUNTAIN CONTRACTING		05/10	JORGE PEREZ	20	HMC/0700	HMC/1900
C-9 T2 ROCHA		05/08	JORGE DURAN	20	HMC/0700	HMC/1900
E-106 ENG6 GREY WILDLAND		05/09	JAKE WARDEN	3	HMC/0700	HMC/1900
E-103 DOZ2 WEAVER GRADING		05/09	KEVIN GAINES	2	HMC/0700	HMC/1900
O-17 REAF		05/07	BECKY BAISDEN	1	HMC/0700	HMC/1900
O-102 REAF		05/07	JORDAN JARRETT	1	HMC/0700	HMC/1900
O-117 REAF		05/08	LISA THOMPSON	1	HMC/0700	HMC/1900
O-99 REMS		05/08	TANNER SMITH	4	HMC/0700	HMC/1900
<b>6. Control Operations/Work Assignments:</b>						
Task: Hold and improve direct firelines. Identify road system for potential containment lines. Improve exiting roads and construct dozer or hand lines as containment lines. Use aviation resources to monitor fire activity in Los Conchas fire footprint.						
Purpose: Keep fire out of private inholdings while lessening fire movement to the South and Southeast						
End State: Lessening the foot print of the Cerro Pelado fire while minimizing the impact to private lands.						
<b>7. Special Instructions:</b>						
<ul style="list-style-type: none"> <li>Briefing will be held at Hummingbird music camp 0700.</li> <li>Coordinate with READ before ground disturbance.</li> <li>Coordinate with Sandoval County, State Police, and Tribal Nations</li> <li>Identify impassable roads with GPS locations in Field Map.</li> <li>Do not post photos with Archaeological resources that have location information.</li> </ul>						
<b>8. Division/Group Communication Summary</b>						
Function	Channel	RX Frequency N/W	RX Tone/NAC	TX Frequency N/W	TX Tone/NAC	Mode
COMMAND	2	169.5375 N	146.2	164.7125 N	146.2	A
COMMAND	11	172.3000 N		165.0125 N		A
TACTICAL	8	168.2500 N	146.2	168.2500 N	146.2	A
AIR TO GROUND	13	166.8250 N		166.8250 N		A
<b>9. Prepared By (Resource Unit Leader)</b>			<b>Approved By (Planning Section Chief)</b>		<b>Date</b>	<b>Time</b>
BRITTANY PHILLIPS			MISSY FORDER		04/28/2022	1800

**Division/Group Assignment List (ICS 204 WF)**  
**Controlled Unclassified Information//Basic**

<b>1. Incident Name:</b>		<b>3.</b>	
CERRO PELADO		<b>Branch:</b>  <b>I</b>	<b>Division/Group</b>  <b>R</b>
<b>2. Operational Period:</b> 0700-0700			
Date/Time From: 04/29/2022 0700 FRI	Date/Time To: 04/30/2022 0700 SAT		
<b>4. Operations Personnel</b>			
<b>OPERATIONS CHIEF</b>	P. MYERS, M. DAVIS V. EDGE, C. COOK (T), J. RAMSAY (T)	<b>BRANCH DIRECTOR</b>	HEATH MORTON
<b>DIVISION/GROUP SUPERVISOR</b>	FRANK ALVES LUKE HELFENSTIEN (T)	<b>SAFETY</b>	BRAD LIDELL

**7. Special Instructions:**

- Leave all gates as you found them, either opened or closed. If the gate was closed when you arrived, close it as you leave.
- Identify IA resources off each division to support IA under TFR.
- \*\* IN THE EVENT OF AN IWI: CONTACT COMMUNICATIONS ON COMMAND

<b>8. Division/Group Communication Summary</b>						
Function	Channel	RX Frequency N/W	RX Tone/NAC	TX Frequency N/W	TX Tone/NAC	Mode
COMMAND	2	169.5375 N	146.2	164.7125 N	146.2	A
COMMAND	11	172.3000 N		165.0125 N		A
TACTICAL	8	168.2500 N	146.2	168.2500 N	146.2	A
AIR TO GROUND	13	166.8250 N		166.8250 N		A

<b>9. Prepared By (Resource Unit Leader)</b>		<b>Approved By (Planning Section Chief)</b>		<b>Date</b>	<b>Time</b>
BRITTANY PHILLIPS		MISSY FORDER		04/28/2022	1800

## Division/Group Assignment List (ICS 204 WF)

Controlled Unclassified Information//Basic

<b>1. Incident Name:</b>			<b>3.</b>			
CERRO PELADO			<b>I</b>	<b>STRUCTURE</b>		
<b>2. Operational Period:</b> 0700-0700						
Date/Time From: 04/29/2022 0700 FRI		Date/Time To: 04/30/2022 0700 SAT				
<b>4. Operations Personnel</b>						
<b>OPERATIONS CHIEF</b>		P. MYERS, M. DAVIS V. EDGE, C. COOK (T), J. RAMSAY (T)		<b>BRANCH DIRECTOR</b>		HEATH MORTON
<b>DIVISION/GROUP SUPERVISOR</b>		CRAIG ROBERTSON				
<b>5. Resources Assigned this Period</b>						
Strike Team / Task Force / Resource Designator		LWD	Leader	Number Persons	Drop Off PT./Time	Pick Up PT./Time
TBD						
<b>6. Control Operations/Work Assignments:</b>						
<p>Task: Identify structures threatened by the Cerro Pelado wildfire and develop a structure protection plan in coordination with the local cooperating fire agencies. Assess Community SLP for hose lay implementation.</p> <p>Purpose: Triage all structures identified for structure protection needs.</p> <p>End State: Threat to identified structures has been reduced as much as practical.</p>						
<b>7. Special Instructions:</b>						
<ul style="list-style-type: none"> <li>Briefing will be held at Hummingbird music camp 0700.</li> <li>Coordinate with READ before ground disturbance.</li> <li>Coordinate with Sandoval County, State Police, and Tribal Nations</li> <li>Identify impassable roads with GPS locations in Field Map.</li> <li>Do not post photos with Archaeological resources that have location information.</li> <li>Leave all gates as you found them, either opened or closed. If the gate was closed when you arrived, close it as you leave.</li> <li>Identify IA resources off each division to support IA and TFR.</li> <li><b>** IN THE EVENT OF AN IWI: CONTACT COMMUNICATIONS ON COMMAND</b></li> </ul>						
<b>8. Division/Group Communication Summary</b>						
Function	Channel	RX Frequency N/W	RX Tone/NAC	TX Frequency N/W	TX Tone/NAC	Mode
COMMAND	1	169.7500 N	146.2	167.1000 N	146.2	A
COMMAND	2	169.5375 N	146.2	164.7125 N	146.2	A
COMMAND	11	172.3000 N		165.0125 N		A
TACTICAL	7	168.6000 N	146.2	168.6000 N	146.2	A
AIR TO GROUND	13	166.8250 N		166.8250 N		A
<b>9. Prepared By (Resource Unit Leader)</b>			<b>Approved By (Planning Section Chief)</b>		<b>Date</b>	<b>Time</b>
BRITTANY PHILLIPS			MISSY FORDER		04/28/2022	1800



**Division/Group Assignment List (ICS 204 WF)**  
**Controlled Unclassified Information//Basic**

<b>1. Incident Name:</b>			<b>3.</b>			
CERRO PELADO			<b>Branch:</b>		<b>Division/Group</b>	
<b>2. Operational Period:</b> 0700-0700			<b>I</b>		<b>IA</b>	
Date/Time From: 04/29/2022 0700 FRI		Date/Time To: 04/30/2022 0700 SAT				
<b>4. Operations Personnel</b>						
<b>OPERATIONS CHIEF</b>		P. MYERS, M. DAVIS V. EDGE, C. COOK (T), J. RAMSAY (T)		<b>BRANCH DIRECTOR</b>		HEATH MORTON
<b>DIVISION/GROUP SUPERVISOR</b>		KRIS SCHROEDER		<b>SAFETY</b>		TONY RIVERS
<b>5. Resources Assigned this Period</b>						
Strike Team / Task Force / Resource Designator		LWD	Leader	Number Persons	Drop Off PT./Time	Pick Up PT./Time
O-108 TFLD		05/11	WILL BERNARD	1	HMC/0700	HMC/1900
E-108 ENG6 HART VENTURES		05/11	KYLE COLTEN	3	HMC/0700	HMC/1900
E-140 ENG6 THE GENERAL		05/10	PAUL ANDERSON	3	HMC/0700	HMC/1900
E-143 ENG6		05/10	AUSTIN STOVER	2	HMC/0700	HMC/1900
E-144 ENG6 GUNNISON FPD		05/11	BEN BRACK	4	HMC/0700	HMC/1900
E-150 ENG6 SANDOVAL COUNTY BRUSH 22		05/10	HARRIS TOYA	3	HMC/0700	HMC/1900
E-146 WTT1		05/05	BILL WEST	2	HMC/0700	HMC/1900
E-113 WTS2 BIG CEDAR		05/10	BEN ANDERBERG	1	HMC/0700	HMC/1900
E-104 DOZ2 CECIL LOGGING		05/10	ROCKY FITHIN	1	HMC/0700	HMC/1900
E-101 DOZ3		05/11	ERIC BLEVINS	2	HMC/0700	HMC/1900
E-102 DOZ3 BALDWIN FORESTRY		05/11	DAVID BALDWIN	2	HMC/0700	HMC/1900
<b>6. Control Operations/Work Assignments:</b>						
Task: Ready stand by for initial attack. Purpose: Provide initial attack support to assigned response area. End State: Provide initial attack support for the Santa Fe National Forest.						
<b>7. Special Instructions:</b>						
<ul style="list-style-type: none"> <li>Briefing will be held at Hummingbird music camp 0700.</li> <li>Provide support for the freelove fire.</li> <li>Coordinate with READ before ground disturbance.</li> <li>Coordinate with Sandoval County, State Police, and Tribal Nations</li> <li>Identify impassable roads with GPS locations in Field Map.</li> <li>Do not post photos with Archaeological resources that have location information.</li> <li>Leave all gates as you found them, either opened or closed. If the gate was closed when you arrived, close</li> </ul>						
<b>8. Division/Group Communication Summary</b>						
Function	Channel	RX Frequency N/W	RX Tone/NAC	TX Frequency N/W	TX Tone/NAC	Mode
COMMAND	1	169.7500 N	146.2	167.1000 N	146.2	A
COMMAND	2	169.5375 N	146.2	164.7125 N	146.2	A
TACTICAL	9	166.7250 N	146.2	166.7250 N	146.2	A
AIR TO GROUND	12	168.3125 N		168.3125 N		A
<b>9. Prepared By (Resource Unit Leader)</b>			<b>Approved By (Planning Section Chief)</b>		<b>Date</b>	<b>Time</b>
BRITTANY PHILLIPS			MISSY FORDER		04/28/2022	1800

**Division/Group Assignment List (ICS 204 WF)**  
**Controlled Unclassified Information//Basic**

<b>1. Incident Name:</b>		<b>3.</b>	
CERRO PELADO		<b>Branch:</b>  <b>I</b>	<b>Division/Group</b>  <b>IA</b>
<b>2. Operational Period:</b> 0700-0700			
Date/Time From: 04/29/2022 0700 FRI	Date/Time To: 04/30/2022 0700 SAT		
<b>4. Operations Personnel</b>			
<b>OPERATIONS CHIEF</b>	P. MYERS, M. DAVIS V. EDGE, C. COOK (T), J. RAMSAY (T)	<b>BRANCH DIRECTOR</b>	HEATH MORTON
<b>DIVISION/GROUP SUPERVISOR</b>	KRIS SCHROEDER	<b>SAFETY</b>	TONY RIVERS

**7. Special Instructions:**

it as you leave.

- Identify IA resources off each division to support IA under TFR.
- \*\* IN THE EVENT OF AN IWI: CONTACT COMMUNICATIONS ON COMMAND

<b>8. Division/Group Communication Summary</b>						
Function	Channel	RX Frequency N/W	RX Tone/NAC	TX Frequency N/W	TX Tone/NAC	Mode
COMMAND	1	169.7500 N	146.2	167.1000 N	146.2	A
COMMAND	2	169.5375 N	146.2	164.7125 N	146.2	A
TACTICAL	9	166.7250 N	146.2	166.7250 N	146.2	A
AIR TO GROUND	12	168.3125 N		168.3125 N		A

<b>9. Prepared By (Resource Unit Leader)</b>		<b>Approved By (Planning Section Chief)</b>		<b>Date</b>	<b>Time</b>
BRITTANY PHILLIPS		MISSY FORDER		04/28/2022	1800

**Division/Group Assignment List (ICS 204 WF)**  
**Controlled Unclassified Information//Basic**


<b>1. Incident Name:</b>			<b>3.</b>			
CERRO PELADO			<b>Branch:</b>		<b>Division/Group</b>	
<b>2. Operational Period:</b> 0700-0700			<b>II</b>		<b>A/Z NIGHT</b>	
Date/Time From: 04/29/2022 0700 FRI	Date/Time To: 04/30/2022 0700 SAT					
<b>4. Operations Personnel</b>						
<b>OPERATIONS CHIEF</b>		P. MYERS, M. DAVIS V. EDGE, C. COOK (T), J.RAMSAY (T)		<b>BRANCH DIRECTOR</b>		CORDELL TAYLOR
<b>DIVISION/GROUP SUPERVISOR</b>		AARON EDWARDS				
<b>5. Resources Assigned this Period</b>						
Strike Team / Task Force / Resource Designator		LWD	Leader	Number Persons	Drop Off PT./Time	Pick Up PT./Time
E-110 ENG3 OUTBACK FIREFIGHTING		05/10	JIM REILLY	3	HMC/1900	HMC/0700
E-1 ENG6 CARBONDALE		05/07	SCOTT EVANS	3	HMC/1900	HMC/0700
O-131 MED 3		06/09	MICHAEL MERRELL	2	HMC/1900	HMC/0700
E-59 AMBU		05/10	SAGE STEWART	2	HMC/1900	HMC/0700
<b>6. Control Operations/Work Assignments:</b>						
Task: Patrol and monitor along fire lines focusing on values at risk and critical areas of concern as directed from day shift. Engage as needed along fire perimeter.						
Purpose: Ensure safety of fire fighters and protect values at risk						
End State: Safety and values at risk are protected. Priority areas of the fire are secured to provide a successful transition with day shift.						
<b>7. Special Instructions:</b>						
<ul style="list-style-type: none"> <li>• Briefing will be held at Hummingbird music camp 0700.</li> <li>• Coordinate with READ before ground disturbance.</li> <li>• Coordinate with Sandoval County, State Police, and Tribal Nations</li> <li>• Identify impassable roads with GPS locations in Field Map.</li> <li>• Do not post photos with Archaeological resources that have location information.</li> <li>• Leave all gates as you found them, either opened or closed. If the gate was closed when you arrived, close it as you leave.</li> <li>• Identify IA resources off each division to support IA under TFR.</li> <li>• ** IN THE EVENT OF AN IWI: CONTACT COMMUNICATIONS ON COMMAND</li> </ul>						
<b>8. Division/Group Communication Summary</b>						
Function	Channel	RX Frequency N/W	RX Tone/NAC	TX Frequency N/W	TX Tone/NAC	Mode
COMMAND	1	169.7500 N	146.2	167.1000 N	146.2	A
COMMAND	2	169.5375 N	146.2	164.7125 N	146.2	A
COMMAND	11	172.3000 N		165.0125 N		A
<b>9. Prepared By (Resource Unit Leader)</b>			<b>Approved By (Planning Section Chief)</b>		<b>Date</b>	<b>Time</b>
BRITTANY PHILLIPS			MISSY FORDER		04/28/2022	1800

**Division/Group Assignment List (ICS 204 WF)**  
**Controlled Unclassified Information//Basic**

<b>1. Incident Name:</b>			<b>3.</b>			
CERRO PELADO			<b>Branch:</b>		<b>Division/Group</b>	
<b>2. Operational Period:</b> 0700-0700			<b>I</b>		<b>M</b>	
Date/Time From: 04/29/2022 0700 FRI		Date/Time To: 04/30/2022 0700 SAT				
<b>4. Operations Personnel</b>						
<b>OPERATIONS CHIEF</b>		P. MYERS, M. DAVIS V. EDGE, C. COOK (T), J. RAMSAY (T)		<b>BRANCH DIRECTOR</b>		HEATH MORTON
<b>DIVISION/GROUP SUPERVISOR</b>				<b>SAFETY</b>		
<b>5. Resources Assigned this Period</b>						
Strike Team / Task Force / Resource Designator		LWD	Leader	Number Persons	Drop Off PT./Time	Pick Up PT./Time
<b>6. Control Operations/Work Assignments:</b>						
<b>7. Special Instructions:</b>						
<b>8. Division/Group Communication Summary</b>						
Function	Channel	RX Frequency N/W	RX Tone/NAC	TX Frequency N/W	TX Tone/NAC	Mode
COMMAND	1	169.7500 N	146.2	167.1000 N	146.2	A
COMMAND	2	169.5375 N	146.2	164.7125 N	146.2	A
COMMAND	11	172.3000 N		165.0125 N		A
AIR TO GROUND	13	166.8250 N		166.8250 N		A
<b>9. Prepared By (Resource Unit Leader)</b>			<b>Approved By (Planning Section Chief)</b>		<b>Date</b>	<b>Time</b>

INCIDENT RADIO COMMUNICATIONS PLAN I-205				1. INCIDENT NAME			2. DATE/TIME PREPARED			3. OPERATIONAL PERIOD DATE/TIME		
				Cerro Pelado			4/28/2022 1700			04/29/22 0700 - 04/30/22 0700		
4. BASIC RADIO CHANNEL UTILIZATION												
Ch #	Function	Channel Name	Assignment	RX Freq	N/W	RX Tone/NAC	TX Freq	N/W	TX Tone/NAC	Mode Analog (A) Digital (D) Mixed (M)	Remarks	
1	Command	CMD 1	DIV A	169.7500	N	146.2	167.1000	N	146.2	A	CERRO PELADO	
2	Command	CMD 2	DIV R & Z	169.5375	N	146.2	164.7125	N	146.2	A	ROAD 10/270 INTERSECTION	
3	Command	CMD 3	ICP	170.4125	N	146.2	165.9625	N	146.2	A	135 ROAD	
4	Unassigned		Unassigned									
5	Tactical	TAC 1	DIV A	168.0500	N	146.2	168.0500	N	146.2	A		
6	Tactical	TAC 2	DIV Z	168.2000	N	146.2	168.2000	N	146.2	A		
7	Tactical	TAC 3	STRUCTURAL PROTECTION	168.6000	N	146.2	168.6000	N	146.2	A		
8	Tactical	TAC 4	DIV R	168.2500	N	146.2	168.2500	N	146.2	A		
9	Tactical	TAC 5	IA	166.7250	N	146.2	166.7250	N	146.2	A		
10	Tactical	TAC 6	REM TEAM	166.7750	N	146.2	166.7750	N	146.2	A	Night Shift	
11	Command	PELADO	All Divisions	172.3000	N		165.0125	N	131.8	A	Santa Fe Dispatch	
12	Air Ground	A/G 51		168.3125	N		168.3125	N		A	Initial Attack / Local Air to Ground	
13	Air Ground	A/G PRI		166.8250	N		166.8250	N		A		
14	Air Ground	A/G SEC		168.7375	N		168.7375	N		A		
15	Medivac	VMED 28		155.3400	N		155.3400	N	156.7	A	Air Ambulance	
16	AIRGUARD			168.6250	N		168.6250	N	110.9	A		
<b>5. Special Instructions:</b>		USE HUMAN REPEATER WHEN NECESSARY. IF ASSIGNED COMMAND CHANNEL DOES NOT WORK TRY THE OTHER ONE.										
<b>6. I-205 Prepared By: Communications Unit Leader</b>			<b>Name: Barry Stearns</b>					<b>Signature: <i>Barry H Stearns</i></b>				

<b>1. INCIDENT NAME:</b> <b>Cerro Pelado</b>	<b>2. OPS PERIOD DATE:</b> 4/29/22	<b>START TIME:</b> 0900	<b>END TIME:</b> 2030	<b>SUNRISE</b> 0614	<b>SUNSET</b> 1948
---	---------------------------------------	----------------------------	--------------------------	------------------------	-----------------------

<b>3. REMARKS and RISK MITIGATIONS:</b> All missions will be analyzed in terms of hazards and risks. Insure to brief for all IA missions to include new frequencies, ground contacts and other aircraft. High level to low level recon of each new LZ/Dipsite   Retardant Avoidance areas:	<b>4. READY ALERT AIRCRAFT:</b>  IA 7HE  See Medical Plan	<b>5. TFR # 2/2366</b>  Freq: 118.825 Surface ≥ 14,000' MSL 6 nautical miles from 35° 49' 00" x 106° 31' 00"
---	---	---

6. PERSONNEL	NAME	PHONE #	7. FREQUENCIES	AM	FM	8. FIXED-WING
<b>AOBD</b>	Lynne Howard	678-699-3266	<b>A/A (Fixed/TFR)</b>	118.8250		<b>Air Attack:</b> <b>78NA / 690B / Base: ABQ</b>
<b>ASGS</b>	John Mason	865-336-6664	<b>A/A (Rotor)</b>	121.3250		<b>Lead Planes/Airtankers - Order through Air Attack</b> <b>If air attack is not up---order through AOBD.</b>
<b>ATGS</b> <b>ATGS-T</b>	Greg Haxby Adam Soper	208-709-2459	<b>A/G Command</b>		166.8250	<b>TA49</b> 35° 49.6644'N x 106° 19.0908'W
<b>HEBM</b> (Santa Fe)	Brian Kleisen	505-467-9351	<b>A/G Tactical</b>		168.7375	<b>Santa Fe Airport (SAF)</b> 35° 37.02'N x 106° 05'.22'W
<b>HMGB</b> (7HE)	Josh Brookshire	505-670-9385	<b>DECK</b> (Santa Fe)		163.100	
<b>HMGB</b> (3CH)	Ben Thayer	208-830-1636				
<b>Santa Fe Dispatch - Aircraft</b>	Darrel	505-438-5600	<b>AIRGUARD</b> <small>(emergency only)</small>		168.6250 TX Tone110.9	<b>Costs to:</b> <a href="mailto:2022.cerrovelado.finance@firenet.gov">2022.cerrovelado.finance@firenet.gov</a>

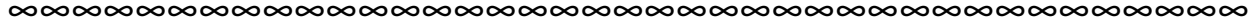
**9.HELICOPTERS**

FAA N#	T Y	MAKE/ MODEL	BASE	AVAIL	START	REMARKS	FAA N#	T Y	MAKE/ MODEL	BASE	AVAIL	START	REMARKS
7HE	3	AS350B3	TA49	0800	0830	<b>Not Assigned Forest IA Ship</b>	Guard (Lobo 29)	1	UH60	Santa Fe (SAF)	---	---	Bucket / ANG Base
473CH	1	CH-47D	Santa Fe (SAF)	0800	0830	Bucket	Guard (Lobo 31)	1	UH60	Santa Fe (SAF)	0800	0830	Bucket / ANG Base
Guard (Lobo 18)	1	UH60	Santa Fe (SAF)	0800	0830	Bucket / ANG Base							



**CERRO PELADO FIRE  
LIAISON CONTACT INFORMATION**

Paul Stevens – LOFR (Lead) 252-216-6316 [npsobxranger@yahoo.com](mailto:npsobxranger@yahoo.com)  
Stephanie Allison – LOFR(t) 662-763-8374 [stephanie.allison@usda.gov](mailto:stephanie.allison@usda.gov)  
Rhea Whalen – LOFR(t) 843-412-3571 [rhea.whalen@usda.gov](mailto:rhea.whalen@usda.gov)



**CERRO PELADO FIRE INFORMATION**

<https://inciweb.nwcg.gov/incident/8075/>

<https://www.facebook.com/2022.cerropeladofire>

<https://twitter.com/SantaFeNF>

Phone-505-312-4593

We are looking for pictures of the Fire especially those of firefighters and equipment in action, structure protection and scenic shots of the fire. Please mail to [2022.CerroPelado@firenet.gov](mailto:2022.CerroPelado@firenet.gov)



**USFS Chief's 2022 Wildfire Letter of Intent**



**Cerro Pelado Fire  
Human Resource Message  
April 29, 2022**

**What Makes Communication Difficult?**

**Words Mean Different Things to Different People**

Look up 500 different words in a dictionary and you will find over 2,500 meanings and/or definitions for those same words. To communicate effectively, both the speaker and the listener must have a mutual understanding of the words they use.

**The Presenting Problem May Not Be the Major Concern**

People often are hesitant to talk about what is really bothering them. The “real issues” are what they tend to hide most carefully. Trying to solve minor problems while the real problems are not clearly understood does not work. Doing this is a major source of ineffectiveness.

**Filters Distort What People Hear and Say and Emotions Are Blinding**

Our own expectations, experiences, values, biases, self-images, beliefs, ideas, worldview, etc. create a “zone of distortion”; the filter that distorts our interpretation of another person’s message. People are often unaware of how their emotions affect communications with others and emotions can literally put some people out of control and prevent them from communicating effectively.

**Here’s what to do to improve communication:**

Stand in the other person’s shoes. You have stood in the other person’s shoes when you repeat their point of view back to their satisfaction.

Drop your point of view long enough to take another way of seeing things.

Remember the point of communication is not to win or be right, but to either bring people together or clarify their differences.

***“I long to accomplish some great and noble task, but it is my chief duty to accomplish small tasks as if they are great and noble.”*** -Helen Keller-

**Janine Summy, Human Resource Specialist, 509-429-1206  
HRSPSummy@gmail.com**

# CERRO PELADO FIRE

## Finance Process

**Please email all documents that pertain to your assignment to the Cerro Pelado inbox.**

**[2022.cerropelado.finance@firenet.gov](mailto:2022.cerropelado.finance@firenet.gov)**

**Use the following format on the email subject line:**

**(Example: TIME/O-200/SBear/Safety)**

**Contact Finance Section directly at 720-527-2533**

**Required Financial Documents:**

<b>Agency Overhead</b>	<b>Agency ADs / EFFs</b>	<b>VIPR Resources</b>	<b>Contract / Agency Crews</b>	<b>Cooperators</b>
Resource Order Signed CTRs	Resource Order Casual Hire Form Signed CTRs	Resource Order VIPR Agreement Schedule of Items Inspections Signed STs	Resource Order Manifest Agreement / Contract Schedule of Items Inspections Signed CTRs	Resource Order Agreement Signed STs /CTRs



# ***Training Specialist Cerro Pelado***

**The Training Specialist is working remotely. Training Specialist contact information for the Cerro Pelado Fire is:**

- Robert Rivelle
- Most important; If any Trainee or Trainer has any questions or concerns, call/text: 707.498.1761 **anytime**.
- Email: robert\_rivelle@nps.gov

## **How to register as a Trainee:**

1. Use the QR code below to register. If you're unable to register using the QR code, please call 707.498.1761 anytime.
2. Once registered, you will receive text and email updates.

## **How to close-out your training assignment:**

1. **Trainer:** Complete and Evaluation Record in the back of the Position Task Book and make as many entries as possible within the individual tasks. Discuss this with your Trainee.
2. **Trainer:** Complete an individual performance rating (ICS 225) and go over the performance rating with your Trainee.
3. **Trainee:** Text a photo or email your individual performance rating (ICS 225) to the Training Specialist.
4. **Trainee:** Complete the Trainee exit questions at the QR code below.
5. **Trainee:** Once 1-4 are completed, the Trainee and the Training Specialist will have a brief conversation to discuss the Task Book and assignment with the Trainee.
6. **Done**, except for safe travels home!

### **Trainee Registration**



### **Trainee Exit Questions**



# **Cerro Pelado Fire Demob Unit**

## **Demob Day Approaching?**

**DEMOB HOURS OF OPERATION: 0730 -2200**

720-584-9090 or email:

[2022.cerropelado.demob@firenet.gov](mailto:2022.cerropelado.demob@firenet.gov)

1. Ensure that your supervisor has released you from the incident at least 24 hours in advance.
2. Contact FINANCE 24 hours prior to give them a heads-up you are departing:  
Phone: 720-527-2533
3. Turn in any outstanding CTRs/Shift Tickets. Make sure they are SIGNED.
4. Confirm there is no missing financial documentation. (See Finance Page for full information)

## ***Need Air Travel to get Home?***

**IF YOUR RETURN METHOD OF TRAVEL IS BY AIR,  
CONTACT DMOB AT LEAST 72-HOURS BEFORE DEMOB DAY**

**Email: Include Gender, Name EXACTLY as it appears on your drivers license, Date of Birth, Departure & Final Destination Airport, city for Rental Car Return, your email and phone number  
to: [2022.cerropelado.demob@firenet.gov](mailto:2022.cerropelado.demob@firenet.gov)**

**AIR TRAVEL PHONE: 720-584-9090**

# Cerro Pelado Demob Instructions

## On your Demob Day

### STEP 1

Ensure that your supervisor has released you from the incident at least 24 hours in advance.

### STEP 2

**SUPPLY** – Return gear and supplies.

- If nothing to turn in, contact supply to clear you.

**GROUND SUPPORT** – Return pool NERV rentals, receive an inspection, etc.

- Be sure to get inspected.

**COMMUNICATIONS** – Return communications equipment

### STEP 3

**FINANCE** – To finalize your finance paperwork, do the following:

- **Please call 720-527-2533 to initiate your final OF-288 or OF-286.**
  - **Virtual Demob, please email your final CTR/ST noting Final CTR/ST in the subject line of the email, please include your cell phone number. Cerro Pelado Finance email [2022.cerropelado.finance@firenet.gov](mailto:2022.cerropelado.finance@firenet.gov)**
  - **In-Person Demob: If you are unable to do a virtual demob, please arrange for an in person demob at the ICP. *Please keep your hard copy CTRs/STs to be turned in in-person.***

***You need your final, signed OF-288 Time Report or OF-286 Invoice BEFORE starting travel.***

### STEP 4

**Contact DMOB at 720-584-9090** and DMOB will verify that you have completed check- out. Be prepared to talk about your actual departure date and time, your anticipated arrival date and time, and where you will be staying if travel includes overnight stops away from fire camp.

**You must complete all four steps to be released in IROC.**



# Logistics

## Ordering Process

Orders should be sent to the ORDM's by 1300 for Cache Orders. For all other orders please have orders to ORDM's by 0800 hours or 1500 hours. Orders should be routed as shown below:

ORDM: Chad\_wilberger@firenet.gov

**Logistics Section Chief:** Chris Revels 864-490-4192 Jane Artega 530-957-3558

**Facilities Unit Contact:** Base Camp: Jimmy Rickard 706-308-2015

ICP: Susanne Adams 715-783-0291

**Ground Support:** Mike Post 305-849-1322 or Jay Aron 401-316-8730

**Supply Unit** Tom Piper 727-514-5513

**Medical Unit** Fred Adler 479-238-6064 or Nick Arnett 408-888-1900

**Security Manager:** Karen Bradford 423-851-4206

**Food Unit** Clyde Leggins 828-334-2340

**Communications** Barry Stearns 954-553-6544

## Fuel Truck Hours 0630 to 0900 and 1800 to 2100

Fuel Tender will be located at the Banco Bonito Staging area on Friday morning and evening, as well as Saturday morning. Fueling will begin at base camp starting Saturday evening.

**Showers** are located at the Base Camp located on Forest Service Road 376 (mile marker 35).

**Shower Hours:** 0600 to 1200 and 1400 to 2200

All resources will return to their designated room reservation area for Friday night. Resources should pack all belongings and check out of rooms on Saturday morning. All resources will report to Base Camp for camping accommodations after shift on Saturday.

Dinner will be served at the Hummingbird Music Camp on Thursday and Friday. Breakfast and Lunches will be available at the same location Friday and Saturday morning .



4

4

14

S Lourdes Dr

N Lourdes Dr

Jemez River

104

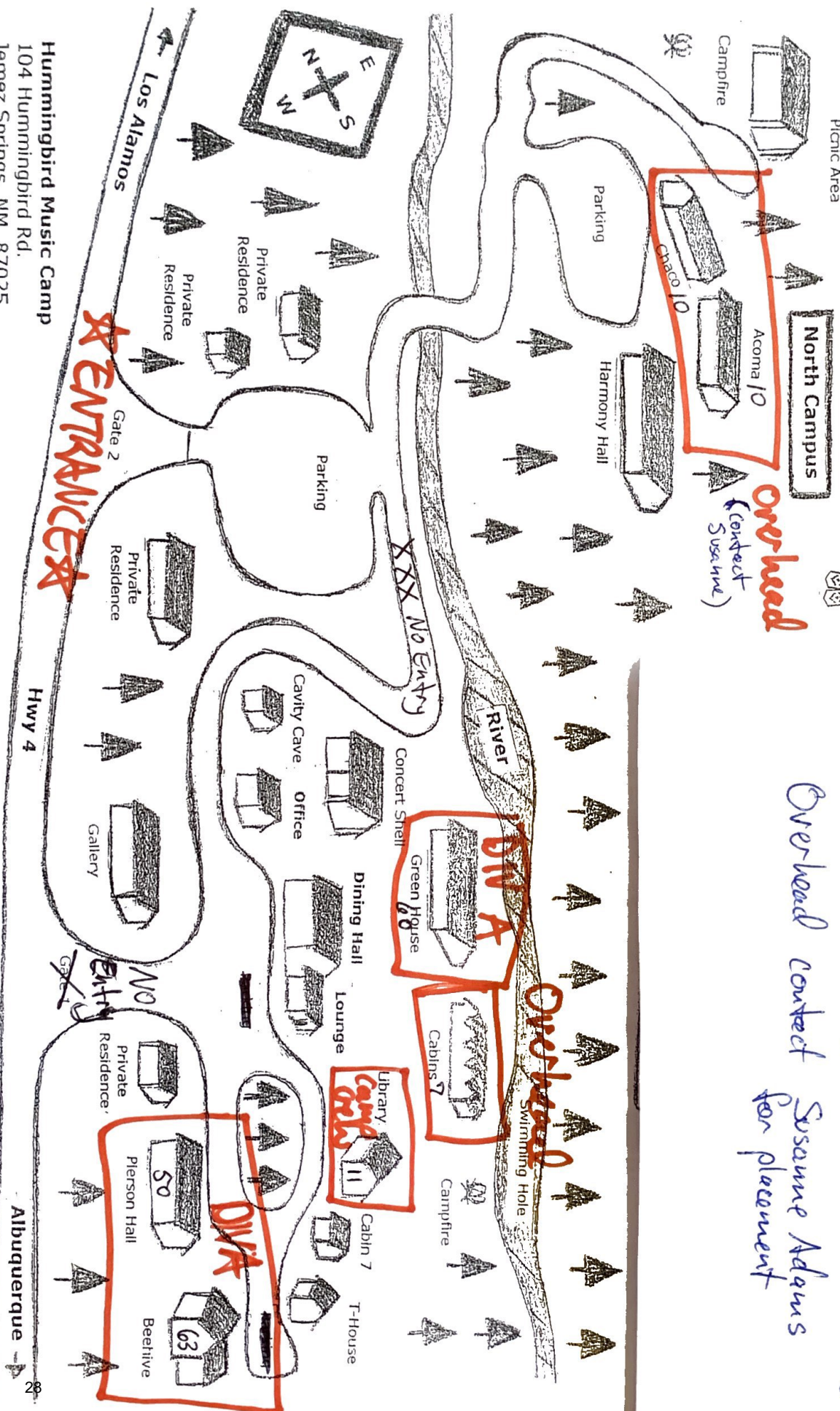
15

27

Hummingbird Music Camp

Use large parking area entrance only

Overhead contact Susanne Adams for placement



ENTRANCE

Overhead  
(contact  
Susanne)

DVA

Overhead

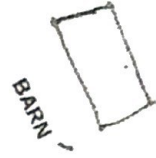
DVA

Hummingbird Music Camp  
104 Hummingbird Rd.  
Jemez Springs, NM 87025

Albuquerque



VIA COELLI  
MONASTERY



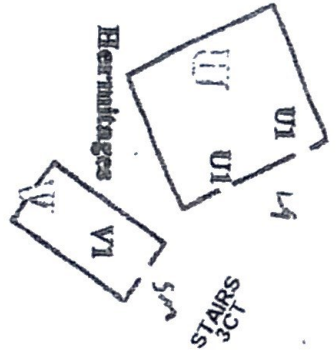
TO RIVER

West

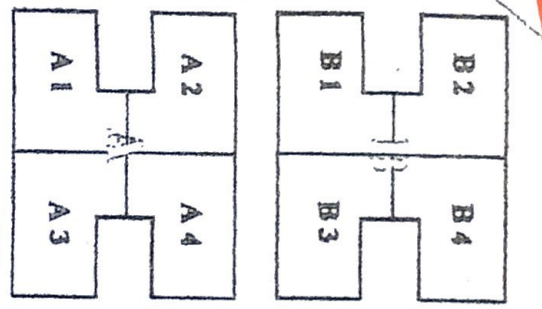
DIRT ROAD

TO MEDITATION  
BRIDGE

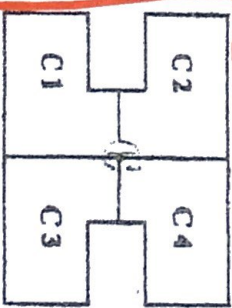
South



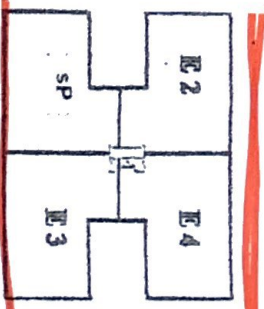
PARKING  
*Unassigned 24*



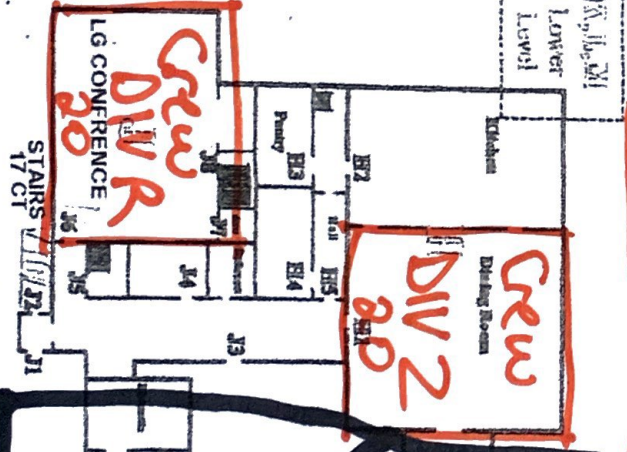
STAIRS  
5CT



STAIRS  
6CT

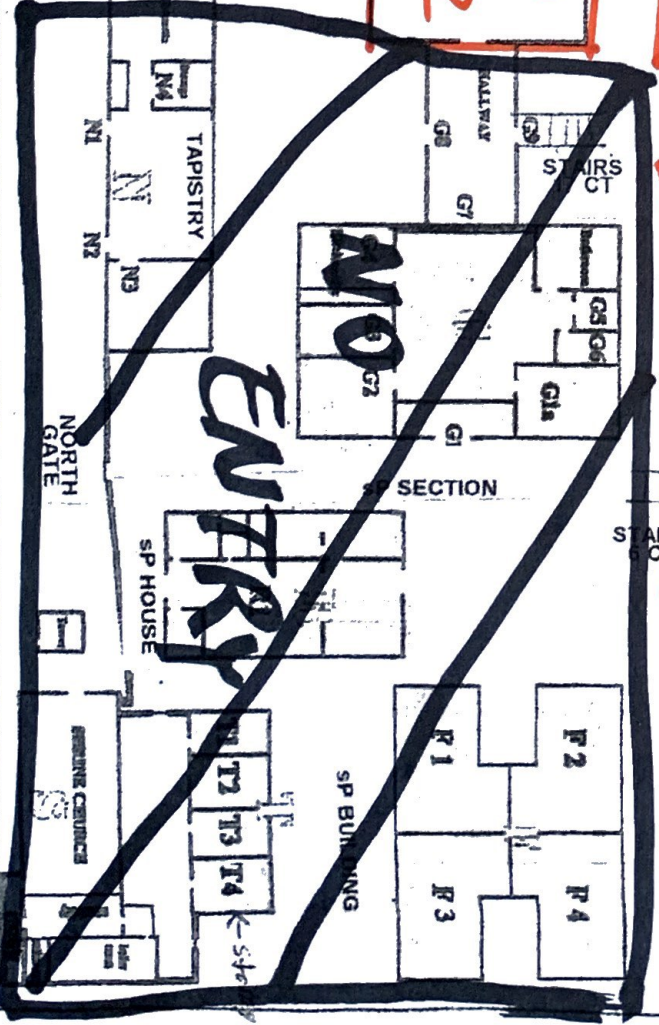


*DIV 12*  
*DIV 24*

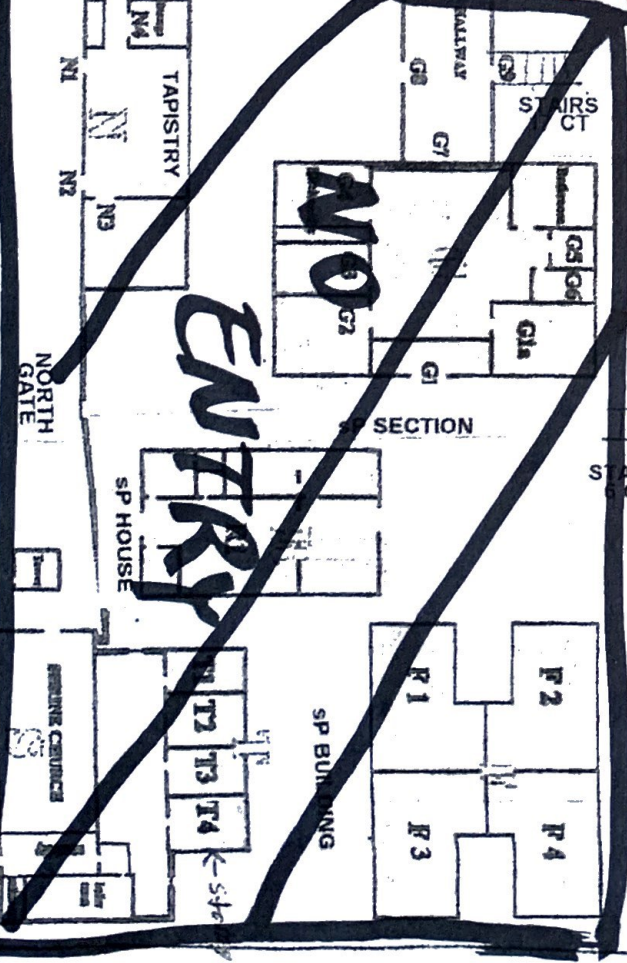


*Crew*  
*DIV 20*  
LG CONFERENCE

*Crew*  
*DIV 2*  
Dining Room

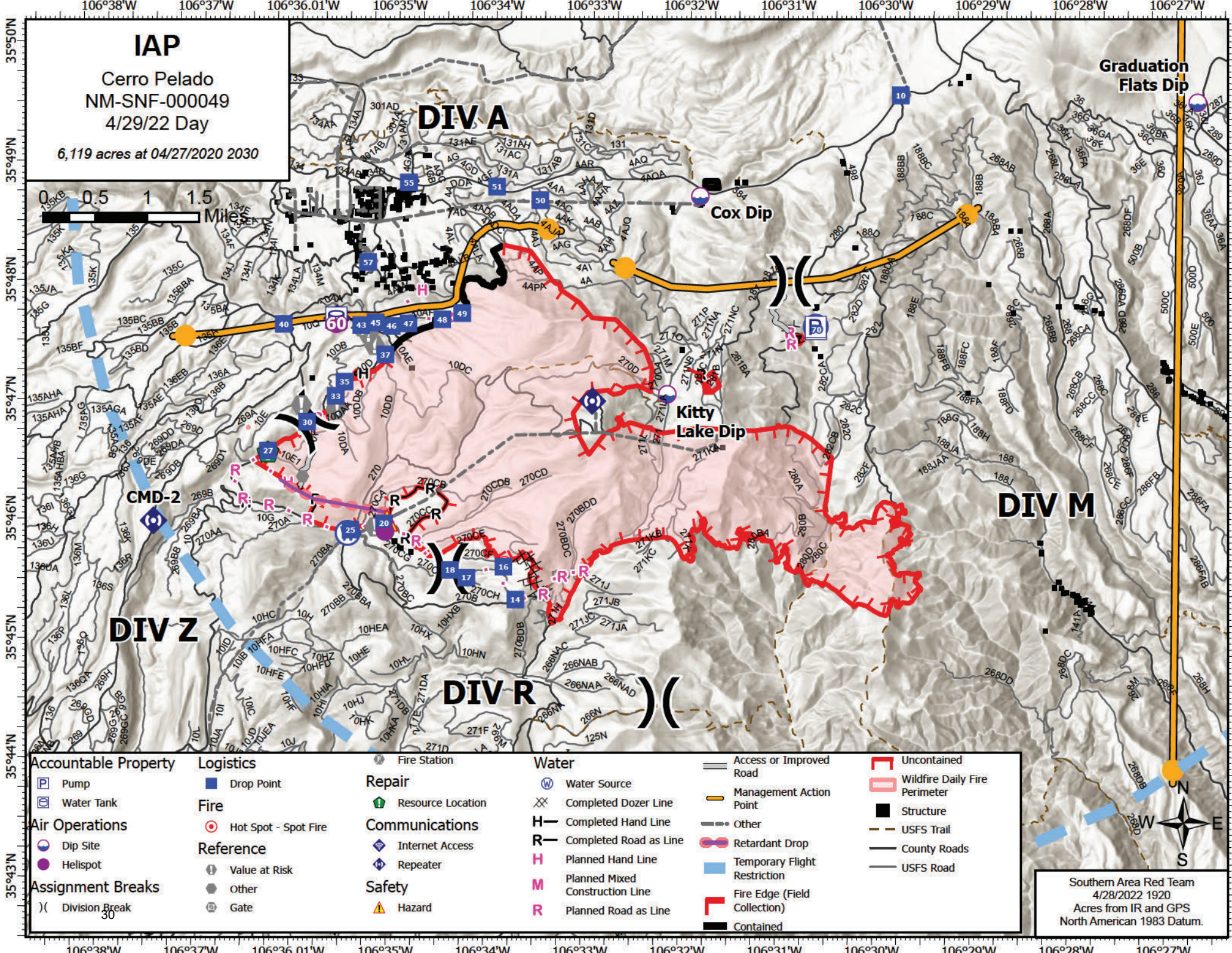


**NO  
ENTRY**



New Mexico Route 4





**IAP**  
 Cerro Pelado  
 NM-SNF-00049  
 4/29/22 Day  
 6,119 acres at 04/27/2020 2030



**Graduation  
 Flats Dip**

**DIV A**

**Cox Dip**

**Kitty  
 Lake Dip**

**DIV M**

**DIV Z**

**DIV R**

- |                             |                      |                       |                                 |                              |                               |
|-----------------------------|----------------------|-----------------------|---------------------------------|------------------------------|-------------------------------|
| <b>Accountable Property</b> | <b>Logistics</b>     | <b>Repair</b>         | <b>Water</b>                    | Access or Improved Road      | Uncontained                   |
| Pump                        | Drop Point           | Resource Location     | Water Source                    | Management Action Point      | Wildfire Daily Fire Perimeter |
| Water Tank                  | <b>Fire</b>          | <b>Communications</b> | Completed Dozer Line            | Other                        | Structure                     |
| <b>Air Operations</b>       | Hot Spot - Spot Fire | Internet Access       | Completed Hand Line             | Retardant Drop               | USFS Trail                    |
| Dip Site                    | <b>Reference</b>     | Repeater              | Completed Road as Line          | Temporary Flight Restriction | County Roads                  |
| Helispot                    | Value at Risk        | <b>Safety</b>         | Planned Hand Line               | Fire Edge (Field Collection) | USFS Road                     |
| <b>Assignment Breaks</b>    | Other                | Hazard                | Planned Mixed Construction Line | Contained                    |                               |
| Division Break              | Gate                 |                       | Planned Road as Line            |                              |                               |

Southern Area Red Team  
 4/28/2022 1920  
 Acres from IR and GPS  
 North American 1983 Datum.







# MEDICAL PLAN (ICS 206 WF)

Controlled Unclassified Information//Basic

1. Incident/Project Name				2. Operational Period				
Cerro Pelado Fire				04/29-30/2022 0700-1900				
2. Medical Aid Stations								
Medical Aid Stations		Location			Advanced Life Support (ALS)			
					Yes		No	
ERL Medical Trailer		Base Camp						
3. Ambulance Services								
For local 911 resources, call Sandoval County Dispatch (505) 896-7300								
Name		Location		Phone		Advanced Life Support (ALS)		
						Yes No		
MED 30 (4WD)		Division A		Cerro Communications		X		
Ambulance 1 (24-hr)		Division Z, DP-25		Cerro Communications		X		
Ambulance 2		Division A DP-40		Cerro Communications		X		
Jemez Pueblo Ambulance Service		4535 NM 4, Jemez Pueblo, NM		Sandoval Cty (above)		X		
MED 31		550 Zia Pueblo Road, NM		Sandoval Cty (above)		X		
4. Air Ambulance Services								
Sandoval County Dispatch (505) 896-7300 A/G Frequency VMed28 155.34 Tx Tone 156.7								
Name		Location			Advanced Life Support (ALS)			
					Yes		No	
Classic Air Medical		Los Alamos – Night Vision			X			
Tri-State Care Flight		Santa Fe – Night Vision			X			
UNM Lifeguard		Albuquerque – Night Vision			X			
Bernalillo County Sheriff 505-798-7000		A-Star: Day short haul, 24-hour extrication/relocation			X			
5. Hospitals								
Name/Address	GPS Datum – WGS 84 Coordinate Standard		Travel Time Air Gnd		Phone	Helipad Yes No		Level of Care Facility
Los Alamos Medical Center 3917 West Road Los Alamos, NM	Lat:	35 52.91' N	30 min	40 min	(505) 231-2602 Supv (505) 662-4201	X		Level 3 Trauma
	Long:	106 19.13' W						
	VHF:							
University of New Mexico 2211 Lomas Blvd. NE Albuquerque, NM	Lat:	35 05.27' N	30 min	2 hrs	(505) 272-2111	X		Level 1 Trauma Burn Stabilization
	Long:	106 37.11' W						
	VHF:							
Christus St. Vincent Medical Center 455 St. Michael's Drive Santa Fe NM	Lat:	35 39.56' N	30 min	2 hrs	(505) 913-3361	X		Level 3 Trauma
	Long:	105 56.73' W						
	VHF:							
University of Colorado 12605 E. 16th Avenue, 3rd floor, Aurora, CO	Lat:	39 44.56' N	3.5 hrs	7 hrs	(844) 285-4555	X		Burn Center
	Long:	104 50.52' W						
	VHF:							
6. Clinics								
Trinity Urgent Care 1460 Trinity Dr Los Alamos, NM		Open 0900-1845 Every Day (505) 412-6033						

### IWI IC Responsibilities:

- Take charge of the scene – inform the Division Supervisor and Communications that you are the IWI IC and establish radio communications(frequencies, channels). Identify the emergency name – Division A medical, etc.
- Assign or begin patient assessment (Medical Incident Report - MIR) and first aid. Request additional medical resources on division/branch or across incident. Transmit MIR patient information to Communications.
- Determine patient transportation through consultation with line medical personnel and Medical Unit Leader. Consider transportation time, risk to personnel, destination facility and available operational resources. If air transport is chosen, implement the plan for alternative transportation in the event aircraft cannot complete the mission. Order transportation resources through Communications as early as possible.
- Notify Communications as resources arrive and any patient status changes. Names of injured or deceased individuals will not be transmitted on the radio.
- Initiate documentation for future investigation; if a line safety officer is available, assign them to lead documentation. Do not move deceased individuals, gear or personal effects except to accomplish rescue work or protect the safety of others. Obtain written documentation of witnesses. The Unit Log, ICS 214, may be used for the initial documentation, but a subsequent narrative will be required.
- As appropriate, conduct an After Action Review to determine successes, areas to improve and lessons learned.



# MEDICAL PLAN (ICS 206 WF)

Controlled Unclassified Information//Basic

7. Division   Branch   Group	Area Location Capability		
<b>Div A</b>	EMS Responders & Capability:	<b>Med 30 Ambulance (ALS)</b> <b>Ambulance 2 (ALS) DP-60 Arnoldo Rivera 520-431-1611</b> <b>Medic Team 1 (ALS) - Cody Keller 479-409-9439</b>	
	ETA for Ambulance to Scene:		
	Air:	40 min.	
	Ground:	1 hr.	
<b>Div I</b>	EMS Responders & Capability:		
	ETA for Ambulance to Scene:		
	Air:	40 min.	
	Ground:	1 hr.	
<b>Div R</b>	EMS Responders & Capability:	<b>REMS-1 (ALS) Tanner Smith 541-556-9045</b>	
	ETA for Ambulance to Scene:		
	Air:	40 min.	
	Ground:	1 hr.	
<b>Div Z</b>	EMS Responders & Capability:	<b>Medic Team 2 (ALS) - Dean Carpenter 479-236-1174</b> <b>Ambulance 1 (ERL) DP-25 William Boyd 717-586-3652</b>	
	ETA for Ambulance to Scene:		
	Air:	40 min.	
	Ground:	1 hr.	
<b>Structure</b>	EMS Responders & Capability:		
	ETA for Ambulance to Scene:		
	Air:	40 min.	
	Ground:	1 hr.	
<b>Div A/Z Night</b>	EMS Responders & Capability:	<b>Ambulance 1 (ERL) DP-25 Sage Stewart 479-806-0860</b> <b>Med Team 3 Jeff Molen 318-751-1087</b>	
	ETA for Ambulance to Scene:		
	Air:	40 min.	
	Ground:	1 hr.	
<b>ICP</b>	EMS Responders & Capability:	<b>Fred Adler (EMT), Nick Arnett (EMTF)</b>	
	Equipment Available on Scene:	<b>BLS</b>	
	Medical Emergency #:	<b>(479) 238-6064 or (408) 888-1900</b>	
	ETA for Ambulance to Scene:		
	Air:	<b>20 min</b>	
	Ground:	<b>30 min</b>	
8. Prepared By (Medical Unit Leader)		9. Date/Time	10. Reviewed By (Safety Officer)
Fred Adler, MEDL, Nick Arnett MEDL(t)		4/28/2022 1700	Tommy Hawkins SOFR  4/28/2022 1700

# MEDICAL PLAN (ICS 206 WF)

Controlled Unclassified Information//Basic

## Medical Incident Report

**FOR A NON-EMERGENCY INCIDENT, WORK THROUGH CHAIN OF COMMAND TO REPORT AND TRANSPORT INJURED PERSONNEL AS NECESSARY.**

**FOR A MEDICAL EMERGENCY: IDENTIFY ON SCENE INCIDENT COMMANDER BY NAME AND POSITION AND ANNOUNCE "MEDICAL EMERGENCY" TO INITIATE RESPONSE FROM IMT COMMUNICATIONS/DISPATCH.**

**Use the following items to communicate situation to communications/dispatch.**

**1. CONTACT COMMUNICATIONS / DISPATCH** (Verify correct frequency prior to starting report)

*Ex: "Communications, Div. Alpha. Stand-by for Emergency Traffic."*

**2. INCIDENT STATUS:** Provide incident summary (including number of patients) and command structure.

*Ex: "Communications, I have a Red priority patient, unconscious, struck by a falling tree. Requesting air ambulance to Forest Road 1 at (Lat./Long.) This will be the Trout Meadow Medical, IC is TFLD Jones. EMT Smith is providing medical care."*

Severity of Emergency / Transport Priority	<input type="checkbox"/> <b>RED / PRIORITY 1 Life or limb threatening injury or illness. Evacuation need is IMMEDIATE</b> <i>Ex: Unconscious, difficulty breathing, bleeding severely, 2<sup>o</sup> – 3<sup>o</sup> burns more than 4 palm sizes, heat stroke, disoriented.</i> <input type="checkbox"/> <b>YELLOW / PRIORITY 2 Serious Injury or illness. Evacuation may be DELAYED if necessary.</b> <i>Ex: Significant trauma, unable to walk, 2<sup>o</sup> – 3<sup>o</sup> burns not more than 1-3 palm sizes.</i> <input type="checkbox"/> <b>GREEN / PRIORITY 3 Minor Injury or illness. Non-Emergency transport</b> <i>Ex: Sprains, strains, minor heat-related illness.</i>	
Nature of Injury or Illness & Mechanism of Injury		<i>Brief Summary of Injury or Illness (Ex: Unconscious, Struck by Falling Tree)</i>
Transport Request		<i>Air Ambulance / Short Haul/Hoist Ground Ambulance / Other</i>
Patient Location		<i>Descriptive Location &amp; Lat. / Long. (WGS84)</i>
Incident Name		<i>Geographic Name + "Medical" (Ex: Trout Meadow Medical)</i>
On-Scene Incident Commander		<i>Name of on-scene IC of Incident within an Incident (Ex: TFLD Jones)</i>
Patient Care		<i>Name of Care Provider (Ex: EMT Smith)</i>

**3. INITIAL PATIENT ASSESSMENT:** Complete this section for each patient as applicable (start with the most severe patient)

Patient Assessment: See IRPG page 106

Treatment:

**4. TRANSPORT PLAN:**

Evacuation Location (if different): (Descriptive Location (drop point, intersection, etc.) or Lat. / Long.) Patient's ETA to Evacuation Location:

Helispot / Extraction Site Size and Hazards:

**5. ADDITIONAL RESOURCES / EQUIPMENT NEEDS:**

*Example: Paramedic/EMT, Crews, Immobilization Devices, AED, Oxygen, Trauma Bag, IV/Fluid(s), Splints, Rope rescue, Wheeled litter, HAZMAT, Extrication*

**6. COMMUNICATIONS: Identify State Air/Ground EMS Frequencies and Hospital Contacts as applicable**

Function	Channel Name/Number	Receive (RX)	Tone/NAC *	Transmit (TX)	Tone/NAC *
COMMAND					
AIR-TO-GRND					
TACTICAL					

**7. CONTINGENCY: Considerations:** If primary options fail, what actions can be implemented in conjunction with primary evacuation method? Be thinking ahead.

**8. ADDITIONAL INFORMATION:** Updates/Changes, etc.

**REMEMBER:** Confirm ETA's of resources ordered. Act according to your level of training. Be Alert. Keep Calm. Think Clearly. Act Decisively.