



Cerro Pelado

NM-SNF-000049, P3PK47 (0310)

**Operational Period:
Saturday, April 30, 2022
0700 – May 1, 2022 0700**

Check - In



Avenza Maps



IAP

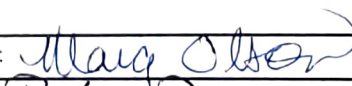
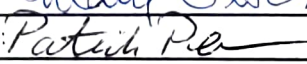


Cerro Pelado Communication Phone
561-527-0804



**SA Red Team
Incident Commander – Steve Parrish**

INCIDENT OBJECTIVES (ICS 202)

1. Incident Name:		2. Operational Period: 0700 - 0700	
CERRO PELADO		Date/Time From: 04/30/2022 0700 SAT	Date/Time To: 05/01/2022 0700 SUN
3. Objective(s):			
Management Objectives			
<p>1) Protection of human life and safety is the first priority for all actions taken on a wildfire and can overrule all other strategic/management objectives and incident requirements.</p> <p>2) Base management decisions on meeting objectives while also minimizing the risk of COVID-19 exposures to responders and the public. COVID-19 considerations may alter how you meet goals but should not lead to higher risk tactics.</p> <p>3) Maintain and strengthen relationships with the Santa Fe National Forest, private landowners, the public, cooperators and partners by providing timely and accurate information.</p> <p>4) Protect the unique attributes of impacted watersheds through actions that minimize sedimentation and invasive species movement.</p> <p>5) Protect impact to cultural resources through consultation with local forest specialists.</p>			
Control Objectives			
<p>1) Protection of human life and safety is the first priority for all actions taken and shall override all other incident control objectives. Evaluate risk vs. benefit in strategic and tactical planning and only commit operational resources to actions that have the highest probability of success.</p> <p>2) Keep fire out of Jemez Canyon.</p> <p>3) Keep fire East of Forest Road (FR) 10; Southeast of Community SLP; South of State Route (SR) 4; East of FR's 282 & 280; and North of FR 270.</p> <p>4) Minimize retardant impacts to Jemez Natural Recreation Area.</p> <p>5) Protect values at risk in the Valles Caldera National Preserve including watersheds, visitor and administrative infrastructure, historic structures, cultural resources, and important wildlife habitats.</p> <p>6) Provide initial attack resources to respond to any new ignitions within the TFR area to limit potential size and growth.</p>			
4. Operational Period Command Emphasis:			
Stop, Think, Discuss then Act, and ensure LCES is in place prior to engaging the fire or Initial Response fire.			
The Cerro Pelado fire receives a strategic, risk-based response, commensurate with the threats and opportunities, and uses the full spectrum of management actions, that consider fire and fuel conditions, weather, values at risk, and resources available.			
General Situational Awareness:			
<ul style="list-style-type: none"> • Continued low RHs • No predicted precipitation for several days 			
WEATHER DISCUSSION: Unusually early start to fire season. Critical to extreme fire weather for the next several days. Entire area is experiencing extended drought. Please see daily weather forecast for detailed report.			
7. Prepared by: MARG OLSON		Position/Title: PLANNING SECTION CHIEF	Signature: 
8. Approved by Incident Commander:		Name: STEVE PARRISH	Signature: 
ICS 202		IAP Page	Date/Time: 04/29/2022 1800



To: All Incident Personnel, Cerro Pelado Fire

As Southern Area National Type I Incident Commander, I am committed to a policy of “zero tolerance” of inappropriate behavior during incident operations. Any form of harassment, discriminatory practices, or disrespectful behavior will not be tolerated. Known or reported acts will be dealt with appropriately.

I am particularly concerned about the perception that alcohol has a place in any of the Incident facilities. It is not appropriate to indulge in alcoholic beverages during any fire assignment.

The National Team from the Southern Region has a policy of “NO ALCOHOL” from the time of dispatch until the time of physical release from the Incident. Members of the Team voluntarily comply with this policy; all incident personnel will be expected to do so also.

We endorse, support, and expect an attitude of mutual respect for all Incident personnel and the public we serve. We also, endorse the attitude and work ethic that places “Safety First, every time on every Incident.” We expect nothing less.

/s/Steve Parrish

Incident Commander

SAIMT 1



INCIDENT Weather Forecast



Forecast No: 7
Prediction For: Saturday
Shift Date: April 30, 2022
Forecast Issued: April 29, 2022 at 1800

Name of Incident: Cerro Pelado Fire
Unit: Santa Fe NF
Incident Meteorologist: Scott Stearns
 (208) 577-1617

Discussion: A brief ridge of high pressure will allow temperatures to warm back to near normal in wake of the cold front, but expect lighter winds today. Even though winds will be relatively light, a well-mixed atmosphere could lead to fire weather similar to Thursday. On Sunday, winds turn back towards the southwest and become breezy ahead of another cold front, expected to move through Sunday night.

Forecast for Today:

Sky/Weather:

Mostly sunny

Jemez Springs 8,000'

Cerro Pelado Pk 9,400'

Max Temperature:	68			62	°F
Min RH:	8			9	%
Wind (20 FT):	Weak inversion breaking around 0900.				
...	W	7		W	8 mph
...	Gusts:	17		Gusts:	20 mph
Haines Index:	6			6	
LAL:	1			1	
Chance of Precipitation:	0			0	%
Tonight's Min Temperature:	40			33	°F
Tonight's Max RH:	25			25	%
Tonight's Wind (20 FT):	Weak inversion setting in around 2100.				
...	DS/DV	5		W	8 mph
...	Gusts:	15		Gusts:	20 mph
Tonight's Haines Index:	6			6	
Tonight's LAL:	1			1	
Tonight's Chnc of Precip:	0			0	%

Forecast for Sunday:

Fire Weather Watch 1100-2200 for gusty winds and low RHs

Sky/Weather:

Mostly sunny

Jemez Springs 8,000'

Cerro Pelado Pk 9,400'



Max / Min Temperature:	74	42		67	36	°F
Min / Max RH:	7	35		8	35	%
Wind (20 FT):	Weak inversion quickly breaks around 1000.					
...	SSW	12		SSW	15	mph
...	Gusts:	30		Gusts:	35	mph
Haines Index:	6		LAL:	1	Precip Chance:	0

Extended Outlook:

The forecast remains dry. Another frontal passage is possible again on Tuesday night or Wednesday. This will cause day-to-day wind direction changes, generally from the west or southwest.

		<u>Max T</u>	<u>Min T</u>	<u>Min RH</u>	<u>Max RH</u>	<u>Ridge Winds @ 1500</u>	<u>Weather</u>
8,600'	Mon:	65	37	10	35	W @ 14 G30	
	Tue:	71	40	10	30	SSW @ 12 G25	
	Wed:	63	33	9	40	WSW @ 10 G23	

FIRE BEHAVIOR FORECAST

FORECAST NUMBER: 07	TYPE OF FIRE: Wildland, Type 1	
FIRE NAME: Cerro Pelado	OPERATIONAL PERIOD: Day Shift	
DATE ISSUED: 4/29/22 TIME ISSUED: 1800	SHIFT DATE: Saturday, April 30, 2022	
UNIT: Santa Fe NF	SIGNED: Alison Coons, FBAN	
WEATHER SUMMARY:	Fire Environment & Danger Information	
<p>Local Thresholds – Watch Outs Min RH 8%, Winds 8 Gusts to 20 mph, Temp>70, Heavy Fuels <9%</p> <p style="text-align: center;"><u>Today’s Significant Fire Weather:</u> Gusting winds, Single Digit Humidity and Haines Index of 6.</p>	 SNF West Pocket Card	 SWCC Fire Danger Page

FIRE BEHAVIOR:

GENERAL:

Very Active fire behavior is expected today on the East side of the fire. Strong winds and Haines index of 6 will create conditions for rapid fire growth and intensity, particularly where winds, slope and drainages align. Single and group torching possible with long range spotting likely.

Current Fire Environment Conditions:

Fine Dead Fuel Moisture = 5%, 1,000 Hour Fuel Moisture = 8-10%, Live Shrub Moisture = <82%
ERC’s remain around the 90th percentile @ Jemez RAWs, but at or near maximum value for this date.

Fire Behavior based on MAXIMUM values for the fuel models shown, exposed fuels on steep slope.

Fuel Model	Rate of Spread	Flame Length
Slash w/ Grass/Shrub	8-26 chains/hour	5-12 Feet Head Fire 1-3 Backing Fire
Timber	6-12 chains/hour	7-10 feet

There is potential for spotting distances of .25 to half of a mile
Probability of Ignition = **81%**

Specific Areas of Concern:

Alpha and Zulu—low humidity and high winds will continue to expose hot areas from recent burnouts. Wind alignment with San Juan drainage will promote fire spread to the east with some northerly movement where fuels allow.

Romeo / Mike / Fox Trot: Fire is expected to continue moving to the east and south toward Oaks Mesa with increased activity where wind and fuels align. Continued burning of heavies and duff in the recently burned areas off of the 270 road system. Pockets of unburned fuels may exhibit very active burning with single and group torching possible spotting up to half of a mile is possible.

AIR OPERATIONS:

Mostly sunny skies with some wind gusts, but a good day for aviation operations. Smoke production at times may cause limited visibility over the eastern portion of the incident.

SAFETY:

Rapid changes in fire spread during slope reversals can cut off egress routes.

Send any fire behavior on site weather observations or photos to: Michael.d.ward@usda.gov, 470-446-2247



HEALTH AND SAFETY MESSAGE

“We don’t plan on luck to be safe, we plan on sound risk management and good decisions.....the Red Team

INCIDENT: Cerro Pelado Fire	DATE: Saturday, April 30, 2022
Major Hazards & Risks: LCES, Heavy Equipment, Structure Protection	
<p>LCES – Before engaging on the fireline ensure LCES (Lookouts, Communications, Escape Routes, Safety Zones) are in place. With the heavy fuel loading (dead and downed) escape maybe difficult. Make sure you have identified a clear escape route and make sure it is known by everyone.</p> <p>Heavy Equipment – Ensure communications are established with operators. Maintain a 50’ – 100’ exclusion area around equipment and increase it to 1 ½ times tree height when in timber. Use a spotter when backing. Avoid working below heavy equipment. Refer to page 85 in the 2022 (Yellow) IRPG.</p> <p>Structure Protection – Structure protection is inherently dangerous because it involves indirect firefighting. Do not commit to stay and protect a structure unless a safety zone for firefighters and equipment have been identified. Utilize the structure protection references on page 11 – 15 in the 2022 IRPG.</p>	

Watch Out Situation of the Day



17.TERRAIN AND FUELS MAKE ESCAPE TO SAFETY ZONES DIFFICULT

Escape Routes/Safety Zone Checklist

Escape Routes:

- More than one escape route
- Scouted – soils, vegetation, slope
- Timed – slowest person, fatigue, dozer speed
- Marked – flagged for day and night use with lime green flagging

Safety Zones:

- Survivable without a shelter
- Natural – clean burn, water, bare soil/rock
- Manmade – constructed sites, roads
- Scouted for size and hazards
- Close enough considering escape time needed

Remember and Follow:

- **The 10 Standard FIRE ORDERS.**
- **The 18 SITUATIONS that SHOUT WATCHOUT.**
- **The Common DENOMINATORS of Fire Behavior on TRAGEDY FIRES.**

The Downhill Line Construction Guidelines.

WATCH OUT

Division/Group Assignment List (ICS 204 WF)
Controlled Unclassified Information//Basic

1. Incident Name:			3.			
CERRO PELADO			Branch:		Division/Group	
2. Operational Period: 0700 - 0700			I		A/Z	
Date/Time From: 04/30/2022 0700 SAT	Date/Time To: 05/01/2022 0700 SUN					
4. Operations Personnel						
OPERATIONS CHIEF		P. MYERS, M. DAVIS V. EDGE, C, COOK (T), J. RAMSAY (T)		BRANCH DIRECTOR		HEATH MORTON
DIVISION/GROUP SUPERVISOR		ANDY PASCARELLA		SAFETY		TOMMY HAWKINS
5. Resources Assigned this Period						
Strike Team / Task Force / Resource Designator	LWD	Leader	Number Persons	Drop Off PT./Time	Pick Up PT./Time	
O-106 TFLD	05/10	CHRISTINE WEIR KOETTER	1	HMC/0700	HMC/1900	
C-12 T2 BIRRUETA	05/08	CRISTIAN JUAREZ	20	HMC/0700	HMC/1900	
ENG3 ENGINE 304	05/07	PETER MUNRO	3	HMC/0700	HMC/1900	
E-111 ENG3 MISSOULA CITY FIRE DEPT	05/09	RANDAL THORPE	3	HMC/0700	HMC/1900	
E-130 ENG3 COCONINO	05/06	CHRIS BROOKS	5	HMC/0700	HMC/1900	
E-131 ENG3 SAN JUAN COUNTY	05/09	AARION AUSTIN	3	HMC/0700	HMC/1900	
ENG4 ENGINE 431 SNF			5	HMC/0700	HMC/1900	
E-2 ENG6 DEBEQUE	05/08	VOORHEES	2	HMC/0700	HMC/1900	
E-105 ENG6 RAMOS EAGLE	05/08	CORBIN LESTER	3	HMC/0700	HMC/1900	
E-142 ENG6 MT-BDF	05/05	GORDON WEGLEY	4	HMC/0700	HMC/1900	
E-9 WTT2 TOUGH EQUIPMENT	05/09	JOHN CULTRIP	1	HMC/0700	HMC/1900	
E-114 WTT2 COWBOY	05/09	WYATT LACKMAN	2	HMC/0700	HMC/1900	
E-151 GRD2	05/12	ERIC GIRON	1	HMC/0700	HMC/1900	
E-N153 UTV				HMC/0700	HMC/1900	
O-141 MED 2	05/09	DEAN CARPENTER	2	HMC/0700	HMC/1900	
E-59 AMBU	05/10	BILL BOYD	2	HMC/0700	HMC/1900	
6. Control Operations/Work Assignments:						
<p>Task: Continue to provide engine resource presence for the Community SLP, and mop up control lines near SLP structures. Hold and mop up handline from the Community SLP to the 10 Q, 10 A, and 10 DB area towards DP 30. Mop up 50 feet along FS 10, FS 270, FS 270C, and handlines. Improve lines as needed. Continue chipping</p>						
8. Division/Group Communication Summary						
Function	Channel	RX Frequency N/W	RX Tone/NAC	TX Frequency N/W	TX Tone/NAC	Mode
COMMAND	2	169.5375 N	146.2	164.7125 N	146.2	A
COMMAND	1	169.7500 N	146.2	167.1000 N	146.2	A
COMMAND	11	172.3000 N		165.0125 N		A
TACTICAL	6	168.2000 N	146.2	168.2000 N	146.2	A
AIR TO GROUND	13	166.8250 N		166.8250 N		A
9. Prepared By (Resource Unit Leader)		Approved By (Planning Section Chief)		Date		Time
BRITTANY PHILLIPS		MISSY FORDER		04/29/2022		1800

Division/Group Assignment List (ICS 204 WF)
Controlled Unclassified Information//Basic

1. Incident Name:			3.			
CERRO PELADO			Branch: I	Division/Group A/Z		
2. Operational Period: 0700 - 0700						
Date/Time From: 04/30/2022 0700	SAT	Date/Time To: 05/01/2022 0700	SUN			
4. Operations Personnel						
OPERATIONS CHIEF	P. MYERS, M. DAVIS V. EDGE, C, COOK (T), J. RAMSAY (T)		BRANCH DIRECTOR	HEATH MORTON		
DIVISION/GROUP SUPERVISOR	ANDY PASCARELLA		SAFETY	TOMMY HAWKINS		
6. Control Operations/Work Assignments:						
operation.						
Purpose: To reduce the fire threat to the Community SLP, and keep fire progression East of FS-10. Hold fire North of FS 270, FS 270 C network, and East of FS 10.						
End State: Lift evacuations and return residents to community SLP, and fire progression East of FS 16. Hold fire within the identified road system to minimize impact on landscape.						
7. Special Instructions:						
<ul style="list-style-type: none"> • Briefing will be held at Hummingbird Music Camp 0700. • Coordinate with READ before ground disturbance. • Coordinate with Sandoval County, State Police, and Tribal Nations • Identify impassable roads with GPS locations in Field Map. • Do not post photos with archaeological resources that have location information. • Leave all gates as you found them, either opened or closed. If the gate was closed when you arrived, close it as you leave. • Identify IA resources off each division to support IA under TFR. • ** IN THE EVENT OF AN IWI: CONTACT COMMUNICATIONS ON COMMAND 						
8. Division/Group Communication Summary						
Function	Channel	RX Frequency N/W	RX Tone/NAC	TX Frequency N/W	TX Tone/NAC	Mode
COMMAND	2	169.5375 N	146.2	164.7125 N	146.2	A
COMMAND	1	169.7500 N	146.2	167.1000 N	146.2	A
COMMAND	11	172.3000 N		165.0125 N		A
TACTICAL	6	168.2000 N	146.2	168.2000 N	146.2	A
AIR TO GROUND	13	166.8250 N		166.8250 N		A
9. Prepared By (Resource Unit Leader)		Approved By (Planning Section Chief)		Date	Time	
BRITTANY PHILLIPS		MISSY FORDER		04/29/2022	1800	

Division/Group Assignment List (ICS 204 WF)
Controlled Unclassified Information//Basic

1. Incident Name:			3.			
CERRO PELADO			Branch:		Division/Group	
2. Operational Period: 0700 - 0700			I		F	
Date/Time From: 04/30/2022 0700 SAT		Date/Time To: 05/01/2022 0700 SUN				
4. Operations Personnel						
OPERATIONS CHIEF		P. MYERS, M. DAVIS V. EDGE, C. COOK (T), J. RAMSAY (T)		BRANCH DIRECTOR		HEATH MORTON
DIVISION/GROUP SUPERVISOR		JOEL BURGETT BLAINE MCKINNON (T)		SAFETY		DAVE STONE
5. Resources Assigned this Period						
Strike Team / Task Force / Resource Designator		LWD	Leader	Number Persons	Drop Off PT./Time	Pick Up PT./Time
C-1 T2IA CALIFORNIA 63		05/07	RAY BATRES	20	HMC/0700	HMC/1900
C-13 T2 MOUNTAINEER CONTRACTING		05/09	JUAN PEREZ	20	HMC/0700	HMC/1900
C-17 T2 DESCANSO CREW 5		05/13	KELLEE GRIGGS	21	HMC/0700	HMC/1900
C-19 T2 PACO#11		05/09	DEREK FINCH	20	HMC/0700	HMC/1900
O-123 SMOD NM MODULE 6		05/07	MATT HEFFLER	4	HMC/0700	HMC/1900
E-129 ENG3 ENGINE1441 NM-BLM		05/06	FORREST PETERMAN	3	HMC/0700	HMC/1900
E-5 ENG3 STONE MOUNTAIN PROTECTION		05/05	JOHN DICKERSON	4	HMC/0700	HMC/1900
E-109 ENG4 ARROW FIRE & LAND MANAGEMENT		05/09	STEVE MARROW	3	HMC/0700	HMC/1900
E-107 ENG5 LAPOINT FD		05/09	LANE HARRIS	3	HMC/0700	HMC/1900
E-141 ENG6 310 DUST CONTROL		05/11	CHAD MORRIS	3	HMC/0700	HMC/1900
E-155 ENG6 LA-7		05/07	LIEMER	3	HMC/0700	HMC/1900
WTT1 LA T-1			CROCKETT	2	HMC/0700	HMC/1900
WTT2 TENDER 26 HEMEZ FIRE				2	HMC/0700	HMC/1900
WTT2 LA T-5			AUSTIN	2	HMC/0700	HMC/1900
E-128 UTV TYPE 7 LA		05/05	KELLY STERNA	2	HMC/0700	HMC/1900
O-140 MED 1		05/09	CODY KELLER	2	HMC/0700	HMC/1900
E-62 AMBU		05/09	AMOLDO RIVERA	2	HMC/0700	HMC/1900
6. Control Operations/Work Assignments:						
Task: Identify road systems for potential containment lines. Improve existing roads or construct dozer or hand						
8. Division/Group Communication Summary						
Function	Channel	RX Frequency N/W	RX Tone/NAC	TX Frequency N/W	TX Tone/NAC	Mode
COMMAND	1	169.7500 N	146.2	167.1000 N	146.2	A
COMMAND	2	169.5375	146.2	164.7125	146.2	A
COMMAND	11	172.3000 N		165.0125 N		A
TACTICAL	5	168.0500 N	146.2	168.0500 N	146.2	A
AIR TO GROUND	13	166.8250 N		166.8250 N		A
9. Prepared By (Resource Unit Leader)			Approved By (Planning Section Chief)		Date	Time
BRITTANY PHILLIPS			MISSY FORDER		04/29/2022	1800

Division/Group Assignment List (ICS 204 WF)
Controlled Unclassified Information//Basic

1. Incident Name:			3.			
CERRO PELADO			Branch:		Division/Group	
2. Operational Period: 0700 - 0700			I		F	
Date/Time From: 04/30/2022 0700 SAT		Date/Time To: 05/01/2022 0700 SUN				
4. Operations Personnel						
OPERATIONS CHIEF		P. MYERS, M. DAVIS V. EDGE, C. COOK (T), J. RAMSAY (T)		BRANCH DIRECTOR		HEATH MORTON
DIVISION/GROUP SUPERVISOR		JOEL BURGETT BLAINE MCKINNON (T)		SAFETY		DAVE STONE
6. Control Operations/Work Assignments:						
lines as appropriate to contain fire. Use aviation resources when available to limit fire spread in the Los Conchas Fire footprint. Providing assistance where needed to structure group.						
Purpose: Keep fire out of private inholdings while lessening fire movement to the north northwest.						
End State: Lessening the footprint of the Cerro Pelado Fire while minimizing the impact to private lands.						
7. Special Instructions:						
<ul style="list-style-type: none"> • Briefing will be held at Hummingbird Music Camp 0700. • Coordinate with READ before ground disturbance. • Coordinate with Sandoval County, State Police, and Tribal Nations • Identify impassable roads with GPS locations in Field Map. • Do not post photos with archaeological resources that have location information. • Leave all gates as you found them, either opened or closed. If the gate was closed when you arrived, close it as you leave. • Identify IA resources off each division to support IA under TFR. • ** IN THE EVENT OF AN IWI: CONTACT COMMUNICATIONS ON COMMAND 						
8. Division/Group Communication Summary						
Function	Channel	RX Frequency N/W	RX Tone/NAC	TX Frequency N/W	TX Tone/NAC	Mode
COMMAND	1	169.7500 N	146.2	167.1000 N	146.2	A
COMMAND	2	169.5375	146.2	164.7125	146.2	A
COMMAND	11	172.3000 N		165.0125 N		A
TACTICAL	5	168.0500 N	146.2	168.0500 N	146.2	A
AIR TO GROUND	13	166.8250 N		166.8250 N		A
9. Prepared By (Resource Unit Leader)			Approved By (Planning Section Chief)		Date	Time
BRITTANY PHILLIPS			MISSY FORDER		04/29/2022	1800

Division/Group Assignment List (ICS 204 WF)
Controlled Unclassified Information//Basic

1. Incident Name:			3.			
CERRO PELADO			Branch:		Division/Group	
2. Operational Period: 0700 - 0700			I		R	
Date/Time From: 04/30/2022 0700 SAT	Date/Time To: 05/01/2022 0700 SUN					
4. Operations Personnel						
OPERATIONS CHIEF		P. MYERS, M. DAVIS V. EDGE, C. COOK (T), J. RAMSAY (T)		BRANCH DIRECTOR		HEATH MORTON
DIVISION/GROUP SUPERVISOR		FRANK ALVES LUKE HELFENSTIEN (T)		SAFETY		BRAD LIDELL
5. Resources Assigned this Period						
Strike Team / Task Force / Resource Designator	LWD	Leader	Number Persons	Drop Off PT./Time	Pick Up PT./Time	
C-7 T1 MORMON LAKE IHC	05/08	SARA SWEENEY	21	HMC/0700	HMC/1900	
C-14 T2IA TAYLOR	05/08	VERNON JACKSON	19	HMC/0700	HMC/1900	
C-9 T2 ROCHA	05/08	JORGE DURAN	20	HMC/0700	HMC/1900	
C-18 T2 GFP	05/09	JOHN FITTS	20	HMC/0700	HMC/1900	
E-106 ENG6 GREY WILDLAND	05/09	JAKE WARDEN	3	HMC/0700	HMC/1900	
E-103 DOZ2 WEAVER GRADING	05/09	KEVIN GAINES	2	HMC/0700	HMC/1900	
O-17 REAF	05/07	BECKY BAIDEN	1	HMC/0700	HMC/1900	
O-102 REAF	05/07	JORDAN JARRETT	1	HMC/0700	HMC/1900	
O-117 REAF	05/08	LISA THOMPSON	1	HMC/0700	HMC/1900	
O-99 REMS	05/08	TANNER SMITH	4	HMC/0700	HMC/1900	
E-102 DOZ3 BALDWIN FORESTRY	05/11	DAVID BALDWIN	2			
6. Control Operations/Work Assignments:						
Task: Hold and improve direct firelines. Identify road system for potential containment lines. Improve exiting roads and construct dozer or hand lines as containment lines. Use aviation resources to monitor fire activity in Los Conchas fire footprint.						
Purpose: Keep fire out of private inholdings while lessening fire movement to the South and Southeast						
End State: Lessening the foot print of the Cerro Pelado fire while minimizing the impact to private lands.						
7. Special Instructions:						
<ul style="list-style-type: none"> Briefing will be held at Hummingbird Music Camp 0700. Coordinate with READ before ground disturbance. Coordinate with Sandoval County, State Police, and Tribal Nations Identify impassable roads with GPS locations in Field Map. 						
8. Division/Group Communication Summary						
Function	Channel	RX Frequency N/W	RX Tone/NAC	TX Frequency N/W	TX Tone/NAC	Mode
COMMAND	2	169.5375 N	146.2	164.7125 N	146.2	A
COMMAND	11	172.3000 N		165.0125 N		A
TACTICAL	8	168.2500 N	146.2	168.2500 N	146.2	A
AIR TO GROUND	13	166.8250 N		166.8250 N		A
9. Prepared By (Resource Unit Leader)			Approved By (Planning Section Chief)		Date	Time
BRITTANY PHILLIPS			MISSY FORDER		04/29/2022	0900

Division/Group Assignment List (ICS 204 WF)
Controlled Unclassified Information//Basic

1. Incident Name:		3.	
CERRO PELADO		Branch: I	Division/Group R
2. Operational Period: 0700 - 0700			
Date/Time From: 04/30/2022 0700 SAT	Date/Time To: 05/01/2022 0700 SUN		
4. Operations Personnel			
OPERATIONS CHIEF	P. MYERS, M. DAVIS V. EDGE, C. COOK (T), J. RAMSAY (T)	BRANCH DIRECTOR	HEATH MORTON
DIVISION/GROUP SUPERVISOR	FRANK ALVES LUKE HELFENSTIEN (T)	SAFETY	BRAD LIDELL

7. Special Instructions:

- Do not post photos with archaeological resources that have location information.
- Leave all gates as you found them, either opened or closed. If the gate was closed when you arrived, close it as you leave.
- Identify IA resources off each division to support IA under TFR.
- ** IN THE EVENT OF AN IWI: CONTACT COMMUNICATIONS ON COMMAND

8. Division/Group Communication Summary						
Function	Channel	RX Frequency N/W	RX Tone/NAC	TX Frequency N/W	TX Tone/NAC	Mode
COMMAND	2	169.5375 N	146.2	164.7125 N	146.2	A
COMMAND	11	172.3000 N		165.0125 N		A
TACTICAL	8	168.2500 N	146.2	168.2500 N	146.2	A
AIR TO GROUND	13	166.8250 N		166.8250 N		A
9. Prepared By (Resource Unit Leader)		Approved By (Planning Section Chief)		Date	Time	
BRITTANY PHILLIPS		MISSY FORDER		04/29/2022	0900	

Division/Group Assignment List (ICS 204 WF)

Controlled Unclassified Information//Basic

1. Incident Name:			3.				
CERRO PELADO			I		IA		
2. Operational Period: 0700 - 0700							
Date/Time From: 04/30/2022 0700 SAT		Date/Time To: 05/01/2022 0700 SUN					
4. Operations Personnel							
OPERATIONS CHIEF		P. MYERS, M. DAVIS V. EDGE, C. COOK (T), J. RAMSAY (T)		BRANCH DIRECTOR		HEATH MORTON	
DIVISION/GROUP SUPERVISOR		KRIS SCHROEDER		SAFETY		TOMMY HAWKINS	
5. Resources Assigned this Period							
Strike Team / Task Force / Resource Designator		LWD	Leader		Number Persons	Drop Off PT./Time	Pick Up PT./Time
O-108 TFLD		05/11	WILL BERNARD		1	HMC/0700	HMC/1900
C-3 T2 BLUE MOUNTAIN		05/10	JORGE PEREZ		20	HMC/0700	HMC/1900
E-108 ENG6 HART VENTURES		05/11	KYLE COLTEN		3	HMC/0700	HMC/1900
E-140 ENG6 THE GENERAL		05/10	PAUL ANDERSON		3	HMC/0700	HMC/1900
E-143 ENG6		05/10	AUSTIN STOVER		2	HMC/0700	HMC/1900
E-144 ENG6 GUNNISON FPD		05/11	BEN BRACK		4	HMC/0700	HMC/1900
E-150 ENG6 SANDOVAL COUNTY BRUSH 22		05/10	HARRIS TOYA		3	HMC/0700	HMC/1900
E-146 WTT1		05/05	BILL WEST		2	HMC/0700	HMC/1900
E-113 WTS2 BIG CEDAR		05/10	BEN ANDERBERG		1	HMC/0700	HMC/1900
E-104 DOZ2 CECIL LOGGING		05/10	ROCKY FITHIN		1	HMC/0700	HMC/1900
E-101 DOZ3		05/11	ERIC BLEVINS		2	HMC/0700	HMC/1900
6. Control Operations/Work Assignments:							
<p>Task: Ready stand by for initial attack. Purpose: Provide initial attack support to assigned response area. End State: Provide initial attack support for the Santa Fe National Forest.</p>							
7. Special Instructions:							
<ul style="list-style-type: none"> Briefing will be held at Hummingbird Music Camp 0700. Provide support for the Freeloze Fire. Coordinate with READ before ground disturbance. Coordinate with Sandoval County, State Police, and Tribal Nations Identify impassable roads with GPS locations in Field Map. Do not post photos with archaeological resources that have location information. Leave all gates as you found them, either opened or closed. If the gate was closed when you arrived, close 							
8. Division/Group Communication Summary							
Function	Channel	RX Frequency N/W	RX Tone/NAC	TX Frequency N/W	TX Tone/NAC	Mode	
COMMAND	1	169.7500 N	146.2	167.1000 N	146.2	A	
COMMAND	2	169.5375 N	146.2	164.7125 N	146.2	A	
TACTICAL	9	166.7250 N	146.2	166.7250 N	146.2	A	
AIR TO GROUND	12	168.3125 N		168.3125 N		A	
9. Prepared By (Resource Unit Leader)			Approved By (Planning Section Chief)		Date	Time	
BRITTANY PHILLIPS			MISSY FORDER		04/29/2022	1800	

Division/Group Assignment List (ICS 204 WF)
Controlled Unclassified Information//Basic

1. Incident Name:		3.	
CERRO PELADO		Branch: I	Division/Group IA
2. Operational Period: 0700 - 0700			
Date/Time From: 04/30/2022 0700 SAT	Date/Time To: 05/01/2022 0700 SUN		
4. Operations Personnel			
OPERATIONS CHIEF	P. MYERS, M. DAVIS V. EDGE, C. COOK (T), J. RAMSAY (T)	BRANCH DIRECTOR	HEATH MORTON
DIVISION/GROUP SUPERVISOR	KRIS SCHROEDER	SAFETY	TOMMY HAWKINS

7. Special Instructions:

it as you leave.

- Identify IA resources off each division to support IA under TFR.
- ** IN THE EVENT OF AN IWI: CONTACT COMMUNICATIONS ON COMMAND

8. Division/Group Communication Summary						
Function	Channel	RX Frequency N/W	RX Tone/NAC	TX Frequency N/W	TX Tone/NAC	Mode
COMMAND	1	169.7500 N	146.2	167.1000 N	146.2	A
COMMAND	2	169.5375 N	146.2	164.7125 N	146.2	A
TACTICAL	9	166.7250 N	146.2	166.7250 N	146.2	A
AIR TO GROUND	12	168.3125 N		168.3125 N		A

9. Prepared By (Resource Unit Leader)		Approved By (Planning Section Chief)		Date	Time
BRITTANY PHILLIPS		MISSY FORDER		04/29/2022	1800

Division/Group Assignment List (ICS 204 WF)

Controlled Unclassified Information//Basic

1. Incident Name:				3.			
CERRO PELADO				I		STRUCTURE	
2. Operational Period: 0700 - 0700							
Date/Time From: 04/30/2022 0700 SAT		Date/Time To: 05/01/2022 0700 SUN					
4. Operations Personnel							
OPERATIONS CHIEF		P. MYERS, M. DAVIS V. EDGE, C. COOK (T), J. RAMSAY (T)		BRANCH DIRECTOR		HEATH MORTON	
DIVISION/GROUP SUPERVISOR		CRAIG ROBERTSON					
5. Resources Assigned this Period							
Strike Team / Task Force / Resource Designator		LWD	Leader	Number Persons	Drop Off PT./Time	Pick Up PT./Time	
TBD							
6. Control Operations/Work Assignments:							
<p>Task: Identify structures threatened by the Cerro Pelado wildfire and develop a structure protection plan in coordination with the local cooperating fire agencies. Assess Community SLP for hose lay implementation.</p> <p>Purpose: Triage all structures identified for structure protection needs.</p> <p>End State: Threat to identified structures has been reduced as much as practical.</p>							
7. Special Instructions:							
<ul style="list-style-type: none"> Briefing will be held at Hummingbird Music Camp 0700. Coordinate with READ before ground disturbance. Coordinate with Sandoval County, State Police, and Tribal Nations Identify impassable roads with GPS locations in Field Map. Do not post photos with archaeological resources that have location information. Leave all gates as you found them, either opened or closed. If the gate was closed when you arrived, close it as you leave. Identify IA resources off each division to support IA and TFR. ** IN THE EVENT OF AN IWI: CONTACT COMMUNICATIONS ON COMMAND 							
8. Division/Group Communication Summary							
Function	Channel	RX Frequency N/W	RX Tone/NAC	TX Frequency N/W	TX Tone/NAC	Mode	
COMMAND	1	169.7500 N	146.2	167.1000 N	146.2	A	
COMMAND	2	169.5375 N	146.2	164.7125 N	146.2	A	
COMMAND	11	172.3000 N		165.0125 N		A	
TACTICAL	7	168.6000 N	146.2	168.6000 N	146.2	A	
AIR TO GROUND	13	166.8250 N		166.8250 N		A	
9. Prepared By (Resource Unit Leader)			Approved By (Planning Section Chief)			Date	Time
BRITTANY PHILLIPS			MISSY FORDER			04/29/2022	1800

Division/Group Assignment List (ICS 204 WF)
Controlled Unclassified Information//Basic

1. Incident Name:				3.		
CERRO PELADO				II	Division/Group A/Z NIGHT	
2. Operational Period: 0700 - 0700						
Date/Time From: 04/30/2022 0700 SAT		Date/Time To: 05/01/2022 0700 SUN				
4. Operations Personnel						
OPERATIONS CHIEF		P. MYERS, M. DAVIS V. EDGE, C. COOK (T), J.RAMSAY (T)		BRANCH DIRECTOR		CORDELL TAYLOR
DIVISION/GROUP SUPERVISOR		AARON EDWARDS				
5. Resources Assigned this Period						
Strike Team / Task Force / Resource Designator		LWD	Leader	Number Persons	Drop Off PT./Time	Pick Up PT./Time
E-110 ENG3 OUTBACK FIREFIGHTING		05/10	JIM REILLY	3	HMC/1900	HMC/0700
E-1 ENG6 CARBONDALE		05/07	SCOTT EVANS	3	HMC/1900	HMC/0700
O-131 MED 3		05/09	JEFFREY MOLEN	2	HMC/1900	HMC/0700
E-59 AMBU		05/10	SAGE STEWART	2	HMC/1900	HMC/0700
6. Control Operations/Work Assignments:						
Task: Patrol and monitor along fire lines focusing on values at risk and critical areas of concern as directed from day shift. Engage as needed along fire perimeter.						
Purpose: Ensure safety of fire fighters and protect values at risk						
End State: Safety and values at risk are protected. Priority areas of the fire are secured to provide a successful transition with day shift.						
7. Special Instructions:						
<ul style="list-style-type: none"> • Briefing will be held at Hummingbird Music Camp 0700. • Coordinate with READ before ground disturbance. • Coordinate with Sandoval County, State Police, and Tribal Nations • Identify impassable roads with GPS locations in Field Map. • Do not post photos with archaeological resources that have location information. • Leave all gates as you found them, either opened or closed. If the gate was closed when you arrived, close it as you leave. • Identify IA resources off each division to support IA under TFR. • ** IN THE EVENT OF AN IWI: CONTACT COMMUNICATIONS ON COMMAND 						
8. Division/Group Communication Summary						
Function	Channel	RX Frequency N/W	RX Tone/NAC	TX Frequency N/W	TX Tone/NAC	Mode
COMMAND	1	169.7500 N	146.2	167.1000 N	146.2	A
COMMAND	2	169.5375 N	146.2	164.7125 N	146.2	A
COMMAND	11	172.3000 N		165.0125 N		A
9. Prepared By (Resource Unit Leader)			Approved By (Planning Section Chief)		Date	Time
BRITTANY PHILLIPS			MISSY FORDER		04/29/2022	1800

Division/Group Assignment List (ICS 204 WF)

Controlled Unclassified Information//Basic

1. Incident Name:			3.			
CERRO PELADO			I	M		
2. Operational Period: 0700 - 0700						
Date/Time From: 04/30/2022 0700 SAT			Date/Time To: 05/01/2022 0700 SUN			
4. Operations Personnel						
OPERATIONS CHIEF	P. MYERS, M. DAVIS V. EDGE, C. COOK (T), J. RAMSAY (T)		BRANCH DIRECTOR	HEATH MORTON		
DIVISION/GROUP SUPERVISOR	MIKE WARD		SAFETY			
5. Resources Assigned this Period						
Strike Team / Task Force / Resource Designator	LWD	Leader	Number Persons	Drop Off PT./Time	Pick Up PT./Time	
6. Control Operations/Work Assignments:						
Task: Scout 289 road						
Purpose: Evaluate needs for improvement in preparation for use as control line						
End State: Plan developed for utilizing 289 road as control line.						
7. Special Instructions:						
<ul style="list-style-type: none"> Briefing will be held at Hummingbird Music Camp 0700. Coordinate with READ before ground disturbance. Coordinate with Sandoval County, State Police, and Tribal Nations Identify impassable roads with GPS locations in Field Map. Do not post photos with archaeological resources that have location information. Leave all gates as you found them, either opened or closed. If the gate was closed when you arrived, close it as you leave. Identify IA resources off each division to support IA under TFR. ** IN THE EVENT OF AN IWI: CONTACT COMMUNICATIONS ON COMMAND 						
8. Division/Group Communication Summary						
Function	Channel	RX Frequency N/W	RX Tone/NAC	TX Frequency N/W	TX Tone/NAC	Mode
COMMAND	1	169.7500 N	146.2	167.1000 N	146.2	A
COMMAND	2	169.5375 N	146.2	164.7125 N	146.2	A
COMMAND	11	172.3000 N		165.0125 N		A
TACTICAL	10	166.7750 N	146.2	166.7750 N	146.2	A
AIR TO GROUND	13	166.8250 N		166.8250 N		A
9. Prepared By (Resource Unit Leader)			Approved By (Planning Section Chief)		Date	Time
BRITTANY PHILLIPS			MISSY FORDER		04/29/2022	1800

INCIDENT RADIO COMMUNICATIONS PLAN I-205				1. INCIDENT NAME			2. DATE/TIME PREPARED			3. OPERATIONAL PERIOD DATE/TIME		
				Cerro Pelado			4/29/2022 1700			04/30/22 0700 - 05/01/22 0700		
4. BASIC RADIO CHANNEL UTILIZATION												
Ch #	Function	Channel Name	Assignment	RX Freq	N/W	RX Tone/NAC	TX Freq	N/W	TX Tone/NAC	Mode Analog (A) Digital (D) Mixed (M)	Remarks	
1	Command	CMD 1	DIV A/F/M	169.7500	N	146.2	167.1000	N	146.2	A	CERRO PELADO	
2	Command	CMD 2	DIV R & Z	169.5375	N	146.2	164.7125	N	146.2	A	ROAD 10/270 INTERSECTION	
3	Command	CMD 3	ICP	170.4125	N	146.2	165.9625	N	146.2	A	135 ROAD	
4	Unassigned		Unassigned									
5	Tactical	TAC 1	DIV F	168.0500	N	146.2	168.0500	N	146.2	A		
6	Tactical	TAC 2	DIV A/Z	168.2000	N	146.2	168.2000	N	146.2	A		
7	Tactical	TAC 3	STRUCTURAL PROTECTION	168.6000	N	146.2	168.6000	N	146.2	A		
8	Tactical	TAC 4	DIV R	168.2500	N	146.2	168.2500	N	146.2	A		
9	Tactical	TAC 5	IA	166.7250	N	146.2	166.7250	N	146.2	A		
10	Tactical	TAC 6	DIV M	166.7750	N	146.2	166.7750	N	146.2	A	Night Shift	
11	Command	PELADO	All Divisions	172.3000	N		165.0125	N	131.8	A	Santa Fe Dispatch	
12	Air Ground	A/G 51		168.3125	N		168.3125	N		A	Initial Attack / Local Air to Ground	
13	Air Ground	A/G PRI		166.8250	N		166.8250	N		A		
14	Air Ground	A/G SEC		168.7375	N		168.7375	N		A		
15	Medivac	VMED 28		155.3400	N		155.3400	N	156.7	A	Air Ambulance	
16	AIRGUARD			168.6250	N		168.6250	N	110.9	A		
5. Special Instructions:		USE HUMAN REPEATER WHEN NECESSARY. IF ASSIGNED COMMAND CHANNEL DOES NOT WORK TRY THE OTHER ONE.										
6. I-205 Prepared By: Communications Unit Leader			Name: Barry Stearns					Signature: <i>Barry H Stearns</i>				


AIR OPERATIONS SUMMARY ICS 220

Prepared By: John Mason

Prepared Date: 4/29/2022

Prepared Time: 1800

1. INCIDENT NAME: Cerro Pelado	2. OPS PERIOD DATE: 4/30/22	START TIME: 0900	END TIME: 2030	SUNRISE 0613	SUNSET 1949
-------------------------------------------------	---------------------------------------	----------------------------	--------------------------	------------------------	-----------------------

3. REMARKS and RISK MITIGATIONS: All missions will be analyzed in terms of hazards and risks. Insure to brief for all IA missions to include new frequencies, ground contacts and other aircraft. High level to low level recon of each new LZ/Dipsite  Retardant Avoidance areas:	4. READY ALERT AIRCRAFT: IA 7HE See Medical Plan	5. TFR # 2/xxxx Freq: 118.825 Surface ≥ 14,000' MSL See NOTAM for Poly
-----------------------------------------------------------------------------------------------------------------------------------------------------------------------------------------------------------------------------------------------------------------------------------------------------------------------------------------------------------------------------------------------	-----------------------------------------------------------------------	--------------------------------------------------------------------------------------------

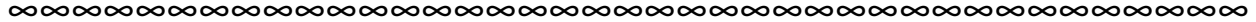
6. PERSONNEL	NAME	PHONE #	7. FREQUENCIES	AM	FM	8. FIXED-WING
AOBD	Lynne Howard	678-699-3266	A/A (Fixed/TFR)	118.8250		Air Attack: 78NA / 690B / Base: ABQ
ASGS	John Mason	865-336-6664	A/A (Rotor)	121.3250		Lead Planes/Airtankers - Order through Air Attack If air attack is not up---order through AOBD.
ATGS ATGS-T	Greg Haxby Adam Soper	208-709-2459	A/G Command		166.8250	TA49 35° 49.6644'N x 106° 19.0908'W
HEBM (Santa Fe)	Brian Kleisen	505-467-9351	A/G Tactical		168.7375	Santa Fe Airport (SAF) 35° 37.02'N x 106° 05'.22'W
HMGB (7HE)	Josh Brookshire	505-670-9385	DECK (Santa Fe)		163.100	
HMGB (3CH)	Ben Thayer	208-830-1636				
Santa Fe Dispatch - Aircraft	Darrel	505-438-5600	AIRGUARD (emergency only)		168.6250 TX Tone110.9	Costs to: 2022.cerrovelado.finance@firenet.gov

9.HELICOPTERS

FAA N#	T Y	MAKE/ MODEL	BASE	AVAIL	START	REMARKS	FAA N#	T Y	MAKE/ MODEL	BASE	AVAIL	START	REMARKS
7HE	3	AS350B3	TA49	0800	0830	Not Assigned Forest IA Ship	Guard (Lobo 29)	1	UH60	Santa Fe (SAF)	---	---	Bucket / ANG Base
473CH	1	CH-47D	Santa Fe (SAF)	0800	0830	Bucket	Guard (Lobo 31)	1	UH60	Santa Fe (SAF)	0800	0830	Bucket / ANG Base
Guard (Lobo 18)	1	UH60	Santa Fe (SAF)	0800	0830	Bucket / ANG Base							

CERRO PELADO FIRE LIAISON CONTACT INFORMATION

Paul Stevens – LOFR (Lead) 252-216-6316 npsobxranger@yahoo.com
Stephanie Allison – LOFR(t) 662-763-8374 stephanie.allison@usda.gov
Rhea Whalen – LOFR(t) 843-412-3571 rhea.whalen@usda.gov



FIRE INFORMATION

<https://inciweb.nwcg.gov/incident/8075/>

<https://www.facebook.com/2022.cerropeladofire>

<https://twitter.com/SantaFeNF>

Phone-505-312-4593

We are looking for pictures of the Fire especially those of firefighters and equipment in action, structure protection and scenic shots of the fire. Please mail to 2022.CerroPelado@firenet.gov



USFS Chief's 2022 Wildfire Letter of Intent



Cerro Pelado Fire
Human Resource Message
April 30, 2022

Be Good to Yourself

Be yourself.....truthfully
Accept yourself.....honestly
Value yourself.....joyfully
Forgive yourself.....completely
Treat yourself.....generously
Balance yourself.....harmoniously
Bless yourself.....abundantly
Trust yourself.....confidently
Love yourself.....wholeheartedly
Empower yourself.....prayerfully
Give yourself.....enthusiastically
Express yourself.....radiantly
-Anonymous

The best way to learn to be good to yourself, is to practice being good to others!

“I have learned that success is to be measured not so much by the position that one reached in life as by the obstacles which one has overcome while trying to succeed.”

-Booker T. Washington

Janine Summy, Human Resource Specialist, 509-429-1206
HRSPSummy@gmail.com

CERRO PELADO FIRE

Finance

FOLLOWING RESOURCES CHECK WITH FINANCE AFTER BRIEFING:

E-1, E-2, E-105, E-109, E-111, E-112, E-144, E-150

C-3

0-123

B&G Forestry

If you worked on the FREELOVE FIRE, please indicate in REMARKS on CTRs and Shift Tickets

Please e-mail all documents that pertain to your assignment to the Cerro Pelado inbox.

2022.cerropelado.finance@firenet.gov

Use the following format on the email subject line:

(Example: TIME/O-200/SBear/Safety)

Contact Finance Section at 720-527-2533

Required Financial Documents:

Agency Overhead	Agency ADs / EFFs	VIPR Resources	Contract / Agency Crews	Cooperators
Resource Order Signed CTRs	Resource Order Casual Hire Form Signed CTRs	Resource Order VIPR Agreement Schedule of Items Inspections Signed STs	Resource Order Manifest Agreement / Contract Schedule of Items Inspections Signed CTRs	Resource Order Agreement Signed STs /CTRs



Training Specialist Cerro Pelado

The Training Specialist is working remotely. Training Specialist contact information for the Cerro Pelado Fire is:

- Robert Rivelle
- Most important; If any Trainee or Trainer has any questions or concerns, call/text: 707.498.1761 **anytime**.
- Email: robert_rivelle@nps.gov

How to register as a Trainee:

1. Use the QR code below to register. If you're unable to register using the QR code, please call 707.498.1761 anytime.
2. Once registered, you will receive text and email updates.

How to close-out your training assignment:

1. **Trainer:** Complete and Evaluation Record in the back of the Position Task Book and make as many entries as possible within the individual tasks. Discuss this with your Trainee.
2. **Trainer:** Complete an individual performance rating (ICS 225) and go over the performance rating with your Trainee.
3. **Trainee:** Text a photo or email your individual performance rating (ICS 225) to the Training Specialist.
4. **Trainee:** Complete the Trainee exit questions at the QR code below.
5. **Trainee:** Once 1-4 are completed, the Trainee and the Training Specialist will have a brief conversation to discuss the Task Book and assignment with the Trainee.
6. **Done**, except for safe travels home!

Trainee Registration



Trainee Exit Questions



Cerro Pelado Fire Demob Unit

Demob Day Approaching?

DEMOB HOURS OF OPERATION: 0730 -2200

720-584-9090 or email:

2022.cerropelado.demob@firenet.gov

1. Ensure that your supervisor has released you from the incident at least 24 hours in advance.
2. Contact FINANCE 24 hours prior to give them a heads-up you are departing:
Phone: 720-527-2533
3. Turn in any outstanding CTRs/Shift Tickets. Make sure they are SIGNED.
4. Confirm there is no missing financial documentation. (See Finance Page for full information)

Need Air Travel to get Home?

**IF YOUR RETURN METHOD OF TRAVEL IS BY AIR,
CONTACT DMOB AT LEAST 72-HOURS BEFORE DEMOB DAY**

**Email: Include Gender, Name EXACTLY as it appears on your drivers license, Date of Birth, Departure & Final Destination Airport, city for Rental Car Return, your email and phone number
to: 2022.cerropelado.demob@firenet.gov**

AIR TRAVEL PHONE: 720-584-9090

Cerro Pelado Demob Instructions

On your Demob Day

STEP 1

Ensure that your supervisor has released you from the incident at least 24 hours in advance.

STEP 2

SUPPLY – Return gear and supplies.

- If nothing to turn in, contact supply to clear you.

GROUND SUPPORT – Return pool NERV rentals, receive an inspection, etc.

- Be sure to get inspected.

COMMUNICATIONS – Return communications equipment

STEP 3

FINANCE – To finalize your finance paperwork, do the following:

- **Please call 720-527-2533 to initiate your final OF-288 or OF-286.**
 - **Virtual Demob, please email your final CTR/ST noting Final CTR/ST in the subject line of the email, please include your cell phone number. Cerro Pelado Finance email 2022.cerrodelado.finance@firenet.gov**
 - **In-Person Demob: If you are unable to do a virtual demob, please arrange for an in person demob at the ICP. *Please keep your hard copy CTRs/STs to be turned in in-person.***

You need your final, signed OF-288 Time Report or OF-286 Invoice BEFORE starting travel.

STEP 4

Contact DMOB at 720-584-9090 and DMOB will verify that you have completed check- out. Be prepared to talk about your actual departure date and time, your anticipated arrival date and time, and where you will be staying if travel includes overnight stops away from fire camp.

You must complete all four steps to be released in IROC.

Logistics

Ordering Process

Orders should be sent to the below ORDM's by 1300 for Cache Orders. For all other orders please have orders to ORDM's by 0800 hours or 1500 hours. Orders should be routed as shown below:

Chad_wilberger@firenet.gov

Logistics:	Sally Browning sbrowning50@gmail.com Jane Artega 530-957-3558
Facilities Unit Contact:	Base Camp: Jimmy Rickard 706-308-2015 ICP: Susanne Adams 715-783-0291
Ground Support:	Jay Aron 401-316-8730
Supply Unit	Tom Piper 727-514-5513
Medical Unit	Fred Adler 479-238-6064 or Nick Arnett 408-888-1900
Security Manager:	Karen Bradford 423-851-4206
Food Unit	Clyde Leggins 828-334-2340
Communications	Barry Stearns 954-553-6544

Fuel Truck Hours 0630 to 0900 and 1800 to 2100

Fuel Tender will be located at the Banco Bonito Staging area on Friday morning and evening, as well as Saturday morning. Fueling will begin at base camp starting Saturday evening.

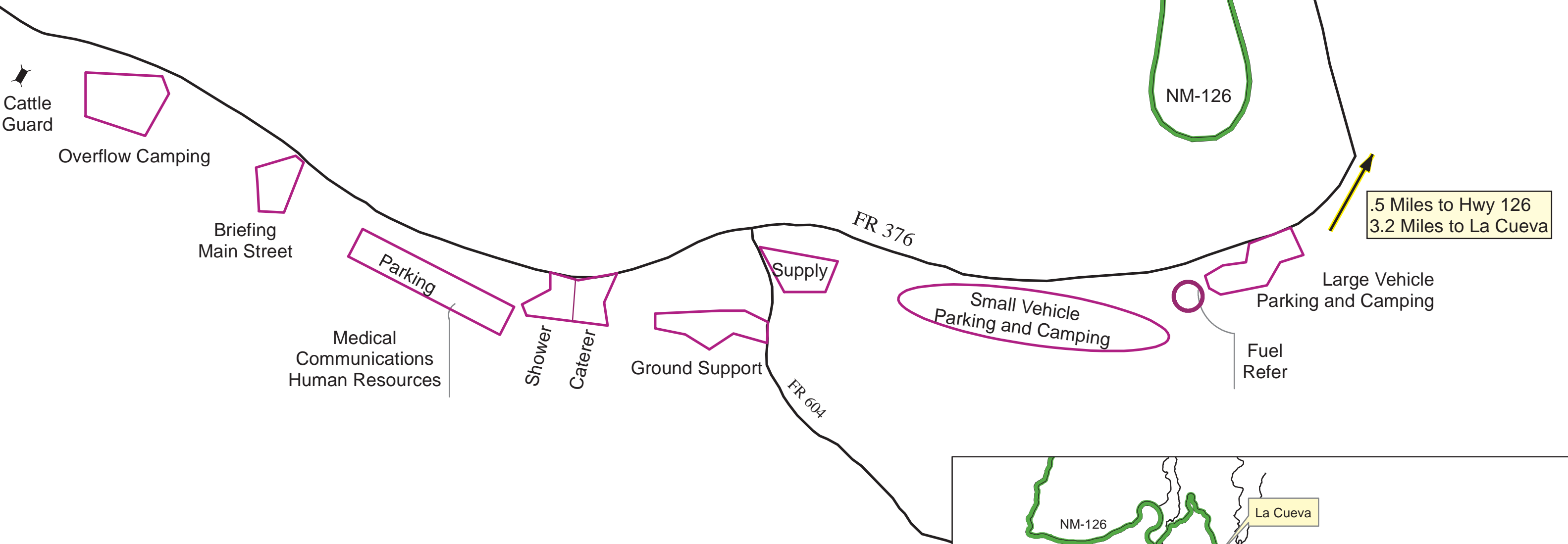
Showers are located at the Base Camp located on Forest Service Road 376 (mile marker 35).

Shower Hours: 0600 to 1200 and 1400 to 2200

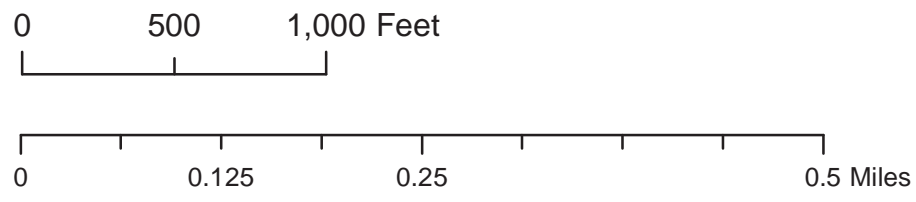
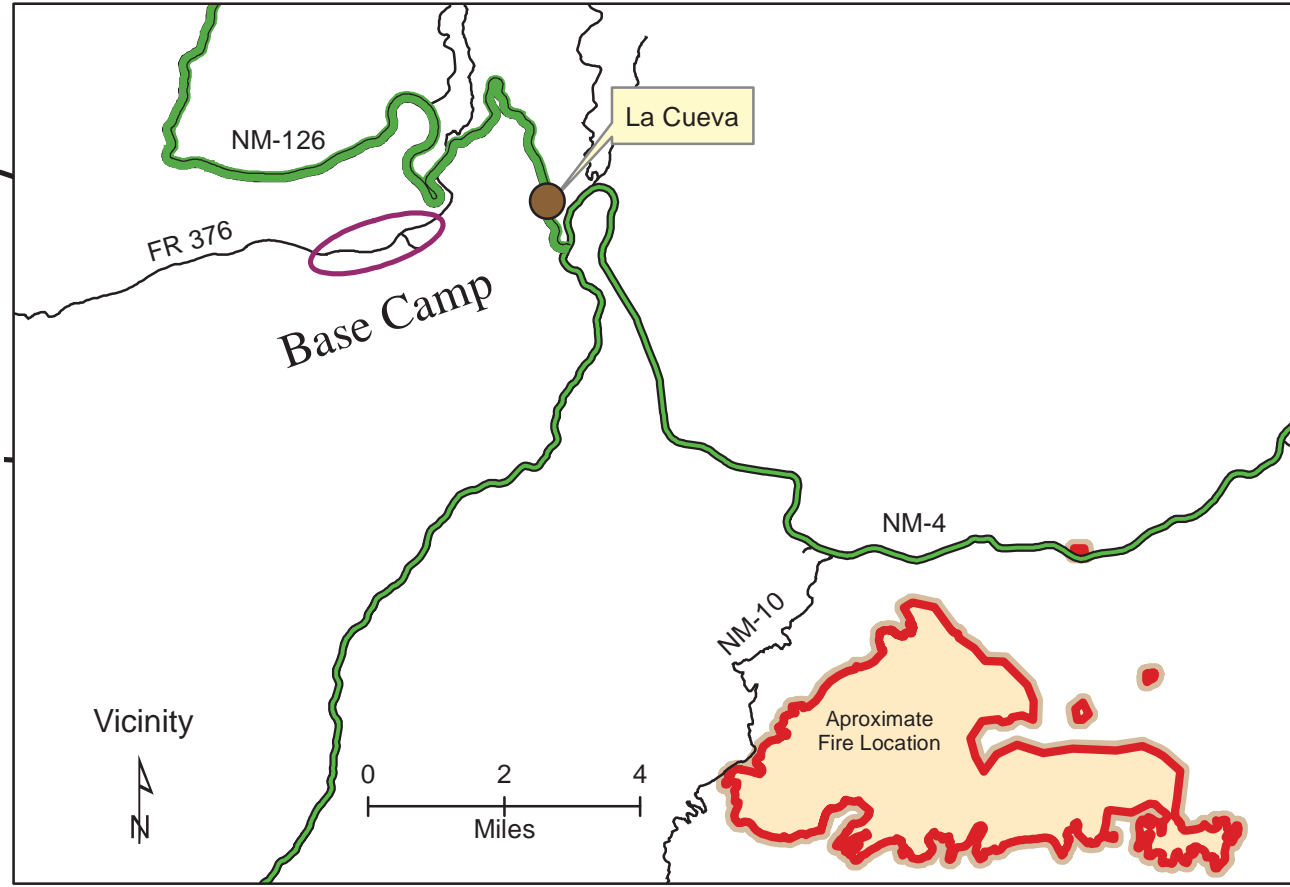
All resources will return to their designated room reservation area for Friday night. Resources should pack all belongings and check out of rooms on Saturday morning. All resources will report to Base Camp for camping accommodations after shift on Saturday.

Dinner will be served at the Hummingbird Music Camp on Thursday and Friday. Breakfast and Lunches will be available at the same location Friday and Saturday morning. Saturday's dinner will be at the Base Camp on FS Road 376.

Cerro Pelado Base Camp



.5 Miles to Hwy 126
3.2 Miles to La Cueva





4

N Lourdes Dr

Jemez River

104

14

4

S Lourdes Dr

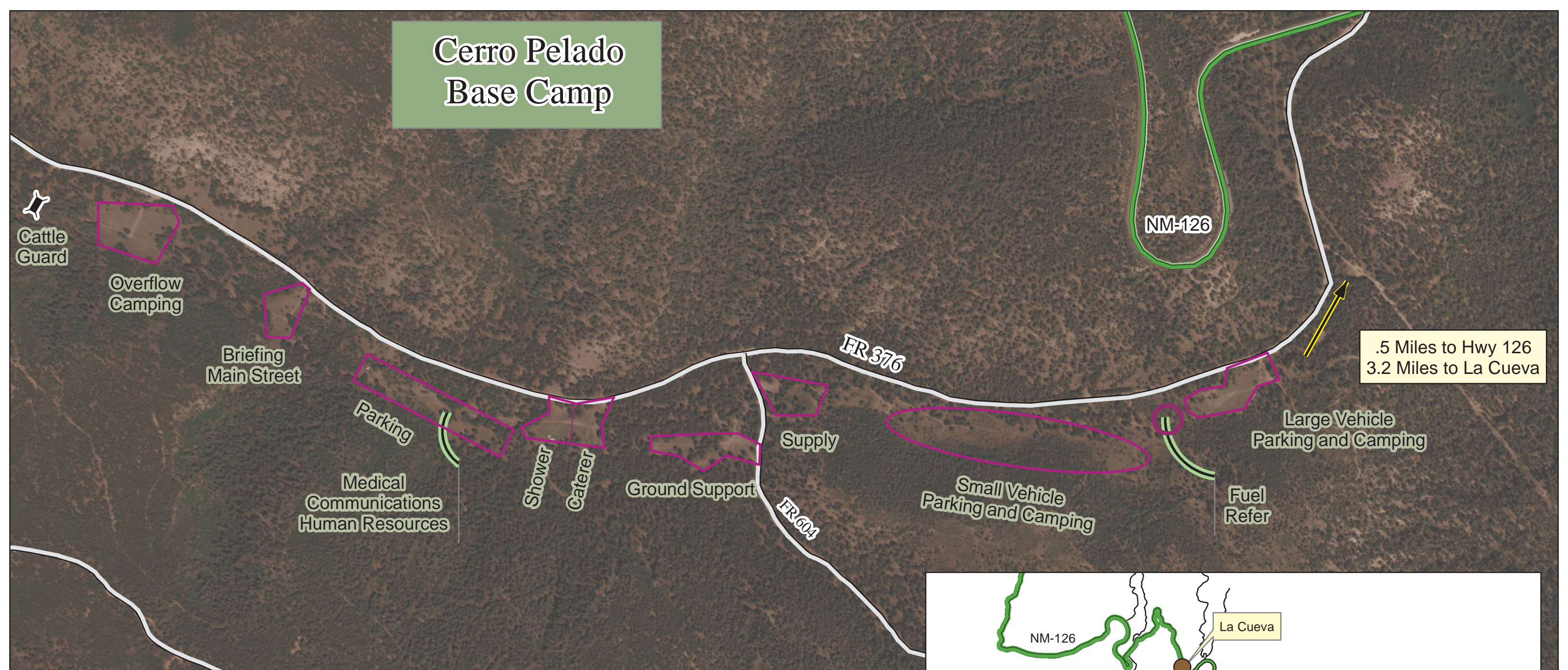


15

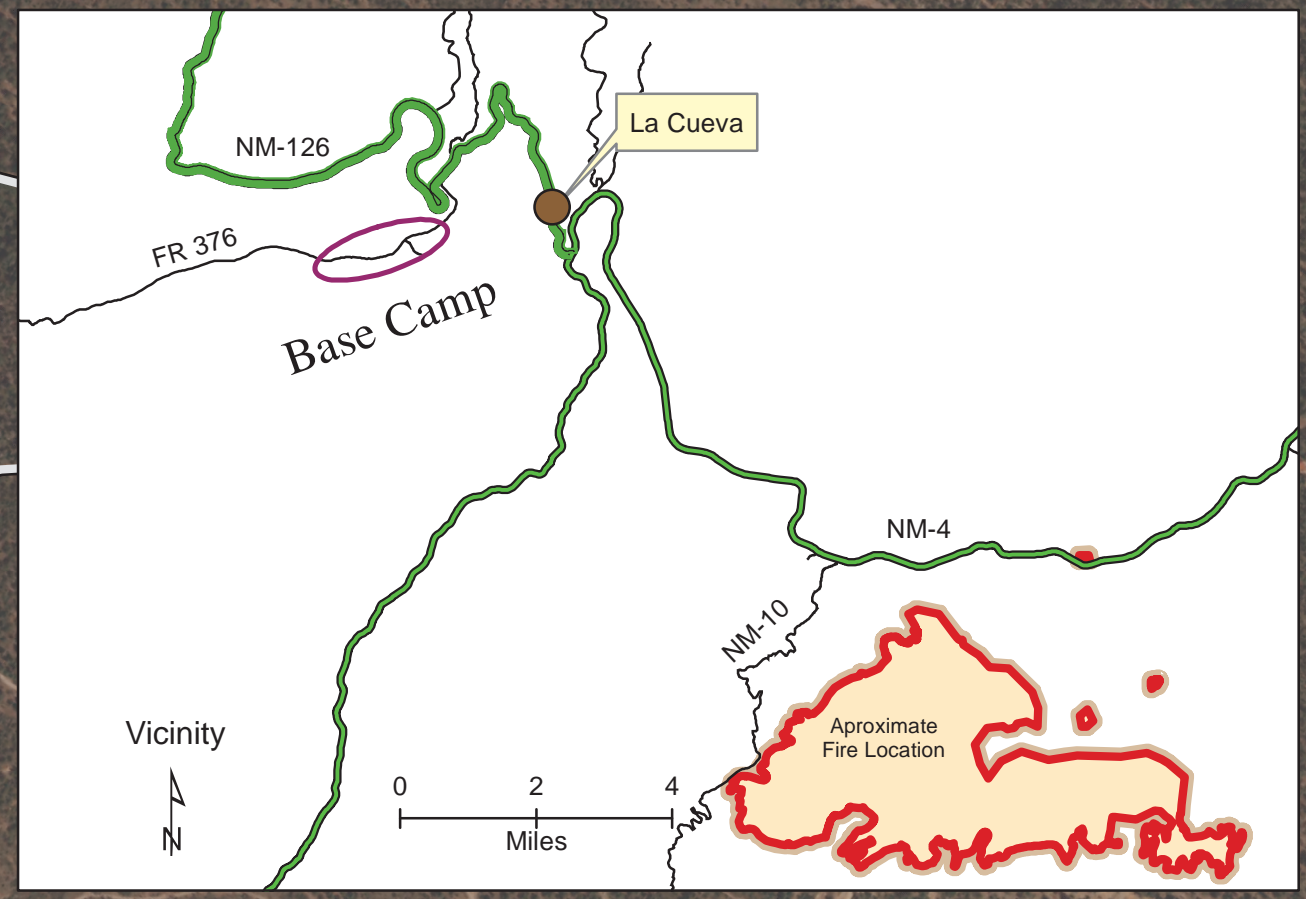
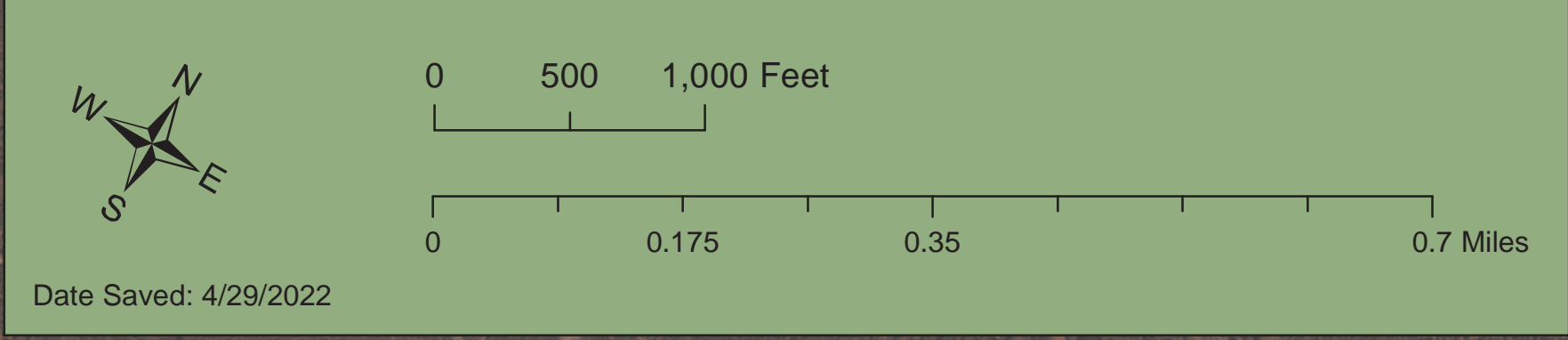
28



Cerro Pelado Base Camp



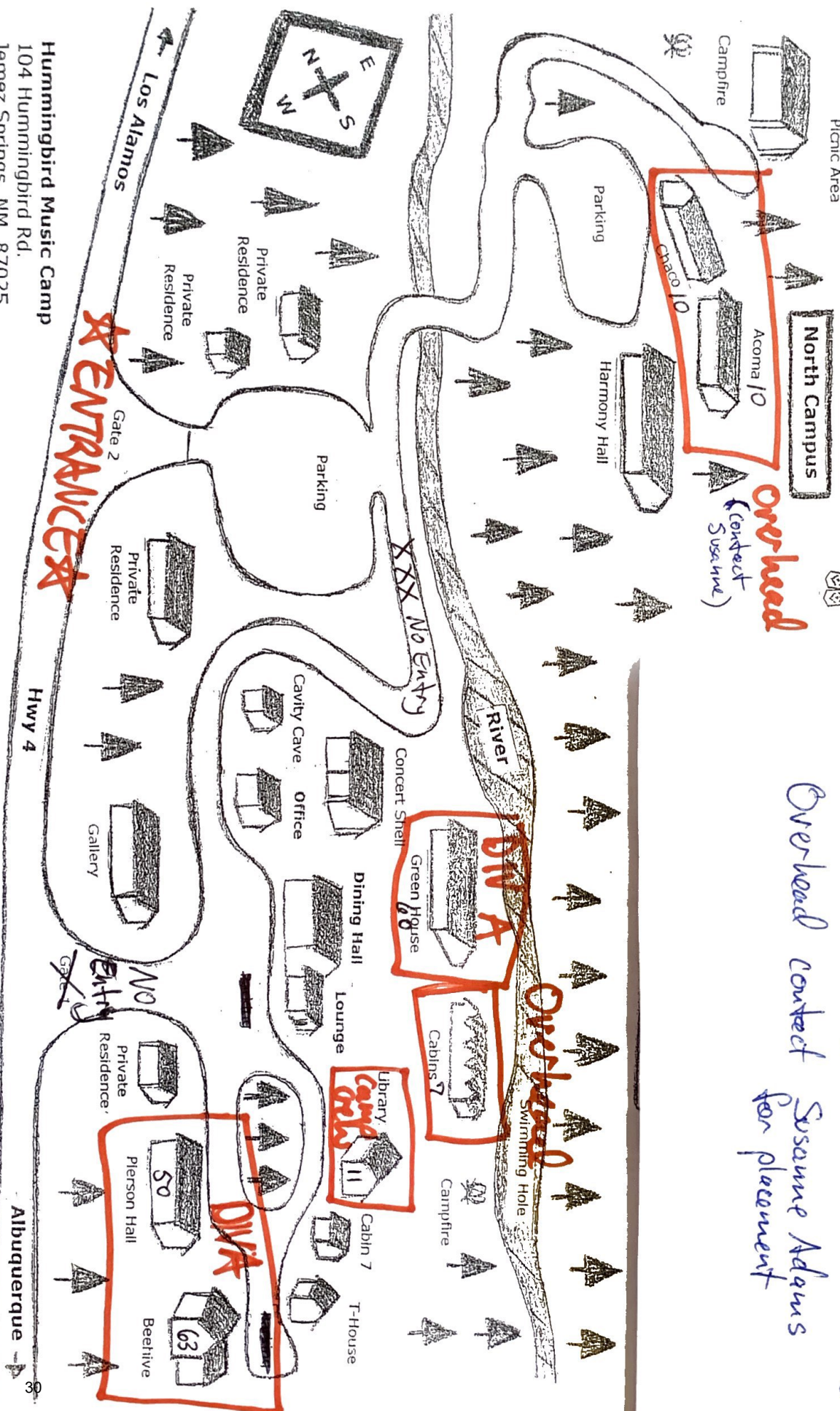
.5 Miles to Hwy 126
3.2 Miles to La Cueva



Hummingbird Music Camp

Use large parking area entrance only

Overhead contact Susanne Adams for placement



ENTRANCE

Overhead
(contact Susanne)

DIN A

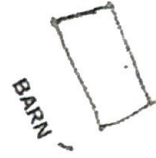
Overhead

DIN A

Hummingbird Music Camp
104 Hummingbird Rd.
Jemez Springs, NM 87025

Albuquerque

VIA COELLI
MONASTERY



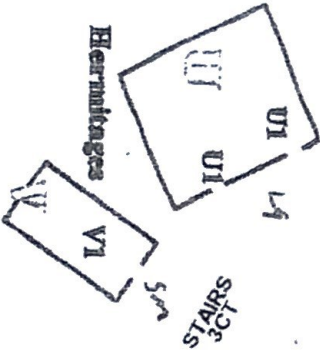
TO RIVER

West

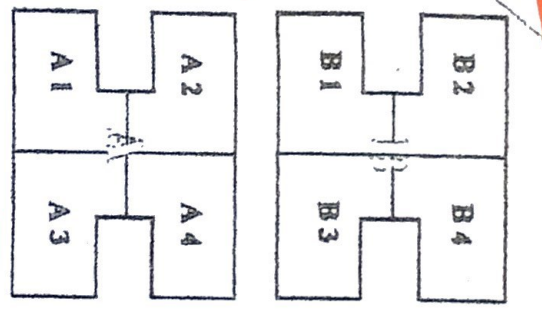
DIRT ROAD

TO MEDITATION
BRIDGE

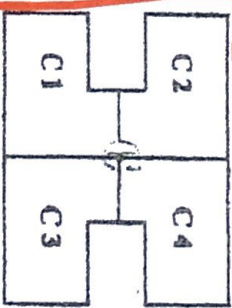
South



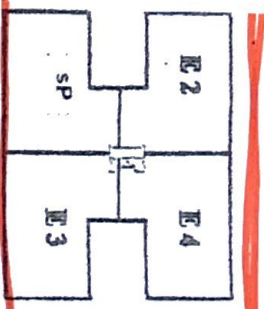
PARKING
Unassigned 24



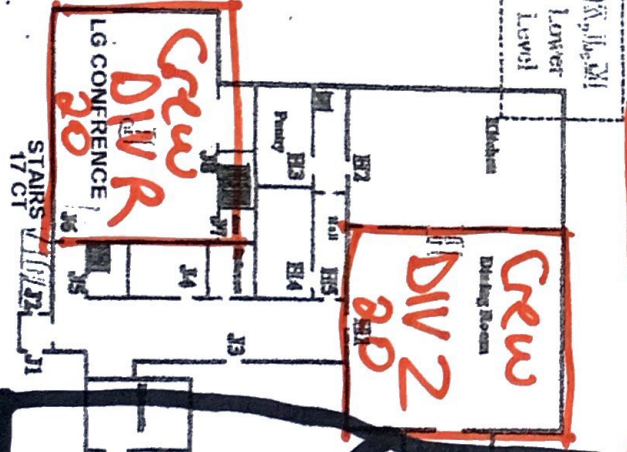
STAIRS
5CT



STAIRS
6CT

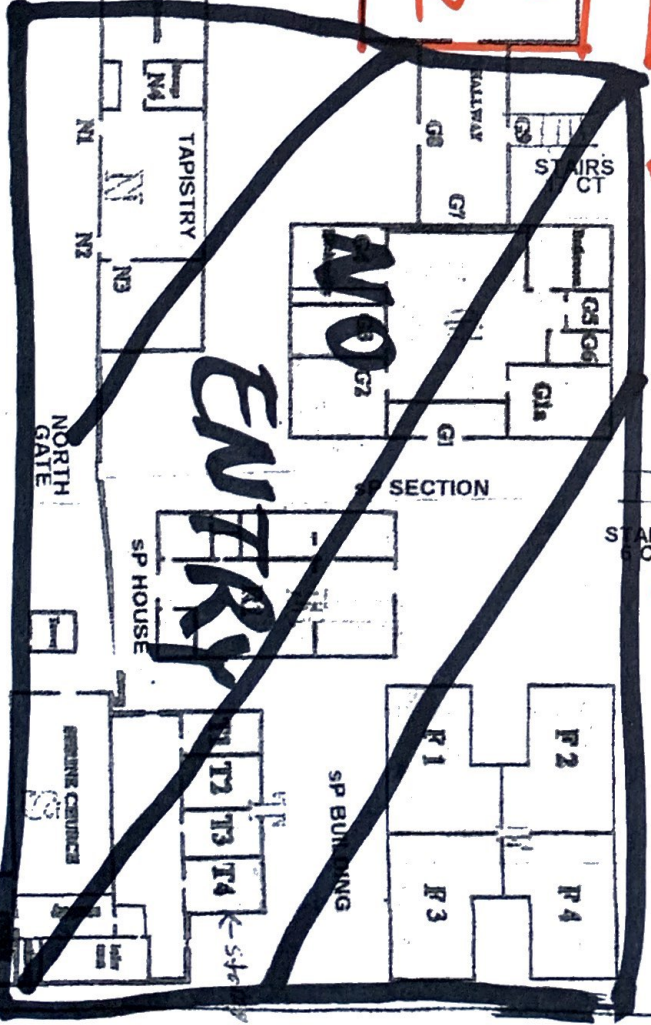


DIV 12
DIV 24



Crew
DIV 20
LG CONFERENCE

Crew
DIV 2
Dining Room



**NO
ENTRY**

New Mexico Route 4

IAP

Cerro Pelado
NM-SNF-000049
4/30/22 Day

7,245 acres at 04/28 1900

Air Operations

- Dip Site
- Helispot
- Helibase

Assignment Breaks

- Division Break
- Drop Point

Logistics

- Drop Point

Operations

- Lookout
- Hot Spot - Spot Fire

Reference

- Value at Risk
- Other
- Gate
- Fire Station

Repair

- Resource Location
- Internet Access
- Repeater

Safety

- Hazard

Water

- Water Source

Ops Completed

- Completed Dozer Line
- Completed Hand Line
- Completed Road as Line

Ops Planned

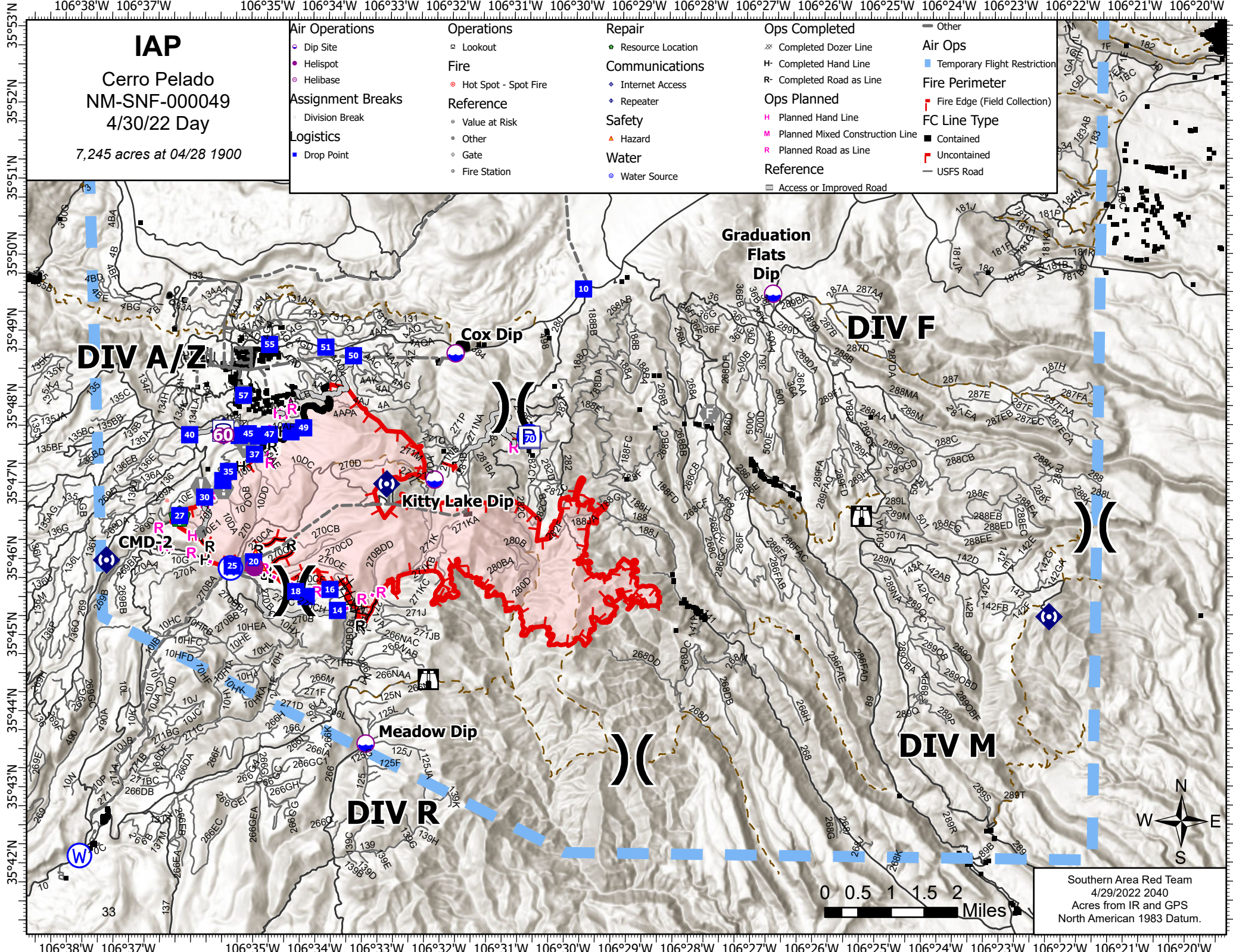
- Planned Hand Line
- Planned Mixed Construction Line
- Planned Road as Line

Reference

- Access or Improved Road

Other

- Air Ops
- Temporary Flight Restriction
- Fire Perimeter
- Fire Edge (Field Collection)
- FC Line Type
- Contained
- Uncontained
- USFS Road



Southern Area Red Team
4/29/2022 2040
Acres from IR and GPS
North American 1983 Datum.

MEDICAL PLAN (ICS 206 WF)

Controlled Unclassified Information//Basic

1. Incident/Project Name				2. Operational Period				
Cerro Pelado Fire				04/30-5/1/2022 0700-1900				
2. Medical Aid Stations								
Medical Aid Stations		Location			Advanced Life Support (ALS)			
					Yes		No	
ERL Medical Trailer		Base Camp						
3. Ambulance Services								
For local 911 resources, call Sandoval County Dispatch (505) 896-7300								
Name		Location		Phone		Advanced Life Support (ALS)		
						Yes No		
MED 30 (4WD)		Division A		Cerro Communications		X		
Ambulance 1 (24-hr)		Division Z, DP-25		Cerro Communications		X		
Ambulance 2		Division A DP-40		Cerro Communications		X		
Jemez Pueblo Ambulance Service		4535 NM 4, Jemez Pueblo, NM		Sandoval Cty (above)		X		
MED 31		550 Zia Pueblo Road, NM		Sandoval Cty (above)		X		
4. Air Ambulance Services								
Sandoval County Dispatch (505) 896-7300 A/G Frequency VMed28 155.34 Tx Tone 156.7								
Name		Location			Advanced Life Support (ALS)			
					Yes		No	
Classic Air Medical		Los Alamos – Night Vision			X			
Tri-State Care Flight		Santa Fe – Night Vision			X			
UNM Lifeguard		Albuquerque – Night Vision			X			
Bernalillo County Sheriff 505-798-7000		A-Star: Day short haul, 24-hour extrication/relocation			X			
5. Hospitals								
Name/Address	GPS Datum – WGS 84 Coordinate Standard		Travel Time Air Gnd		Phone	Helipad Yes No		Level of Care Facility
Los Alamos Medical Center 3917 West Road Los Alamos, NM	Lat:	35 52.91' N	30 min	40 min	(505) 231-2602 Supv (505) 662-4201	X		Level 3 Trauma
	Long:	106 19.13' W						
	VHF:							
University of New Mexico 2211 Lomas Blvd. NE Albuquerque, NM	Lat:	35 05.27' N	30 min	2 hrs	(505) 272-2111	X		Level 1 Trauma Burn Stabilization
	Long:	106 37.11' W						
	VHF:							
Christus St. Vincent Medical Center 455 St. Michael's Drive Santa Fe NM	Lat:	35 39.56' N	30 min	2 hrs	(505) 913-3361	X		Level 3 Trauma
	Long:	105 56.73' W						
	VHF:							
University of Colorado 12605 E. 16th Avenue, 3rd floor, Aurora, CO	Lat:	39 44.56' N	3.5 hrs	7 hrs	(844) 285-4555	X		Burn Center
	Long:	104 50.52' W						
	VHF:							
6. Clinics								
Trinity Urgent Care 1460 Trinity Dr Los Alamos, NM		Open 0900-1845 Every Day (505) 412-6033						

IWI IC Responsibilities:

- Take charge of the scene – inform the Division Supervisor and Communications that you are the IWI IC and establish radio communications(frequencies, channels). Identify the emergency name – Division A medical, etc.
- Assign or begin patient assessment (Medical Incident Report - MIR) and first aid. Request additional medical resources on division/branch or across incident. Transmit MIR patient information to Communications.
- Determine patient transportation through consultation with line medical personnel and Medical Unit Leader. Consider transportation time, risk to personnel, destination facility and available operational resources. If air transport is chosen, implement the plan for alternative transportation in the event aircraft cannot complete the mission. Order transportation resources through Communications as early as possible.
- Notify Communications as resources arrive and any patient status changes. Names of injured or deceased individuals will not be transmitted on the radio.
- Initiate documentation for future investigation; if a line safety officer is available, assign them to lead documentation. Do not move deceased individuals, gear or personal effects except to accomplish rescue work or protect the safety of others. Obtain written documentation of witnesses. The Unit Log, ICS 214, may be used for the initial documentation, but a subsequent narrative will be required.
- As appropriate, conduct an After Action Review to determine successes, areas to improve and lessons learned.

MEDICAL PLAN (ICS 206 WF)

Controlled Unclassified Information//Basic

7. Division Branch Group	Area Location Capability		
Div A	EMS Responders & Capability:	Med 30 Ambulance (ALS) Ambulance 2 (ALS) DP-60 Arnoldo Rivera 520-431-1611 Medic Team 1 (ALS) - Cody Keller 479-409-9439 REMS 2 (ALS) DP-57 - Rick Bostian 479-422-0462	
	ETA for Ambulance to Scene:	Air: 40 min. Ground: 30 min.	
Div M	EMS Responders & Capability:	<i>None assigned.</i>	
	ETA for Ambulance to Scene:	Air: 40 min. Ground: <i>Inaccessible (use REMS)</i>	
Div R	EMS Responders & Capability:	REMS-1 (ALS) DP-14 Tanner Smith 541-556-9045	
	ETA for Ambulance to Scene:	Air: 40 min. Ground: 30 min.	
Div Z	EMS Responders & Capability:	Medic Team 2 (ALS) - Dean Carpenter 708-979-6976 Ambulance 1 (ERL) DP-25 William Boyd 717-586-3652	
	ETA for Ambulance to Scene:	Air: 40 min. Ground: 30 min.	
Structure	EMS Responders & Capability:	<i>None assigned.</i>	
	ETA for Ambulance to Scene:	Air: 40 min. Ground: 30 min.	
Div A/Z (Night)	EMS Responders & Capability:	Ambulance 1 (ERL) DP-25 Sage Stewart 479-806-0860 Med Team 3 (ALS) - Jeff Molen 318-751-1087	
	ETA for Ambulance to Scene:	Air: 40 min. Ground: 1 hr.	
ICP	EMS Responders & Capability:	Fred Adler (EMT), Nick Arnett (EMTF)	
	Equipment Available on Scene:	BLS	
	Medical Emergency #:	(479) 238-6064 or (408) 888-1900	
	ETA for Ambulance to Scene:	Air: 20 min. Ground: 30 min.	
Base Camp	EMS Responders & Capability:	Medical Trailer	
	Equipment Available on Scene:	ALS	
	ETA for Ambulance to Scene:	Air: 35 min. Ground: 45 min.	
8. Prepared By (Medical Unit Leader)		9. Date/Time	10. Reviewed by (Safety Officer)
Fred Adler, MEDL Nick Arnett, MEDL(t)		4/29/2022 1700	Tommy Hawkins, SOFR 4/29/2022 1700

MEDICAL PLAN (ICS 206 WF)

Controlled Unclassified Information//Basic

Medical Incident Report

FOR A NON-EMERGENCY INCIDENT, WORK THROUGH CHAIN OF COMMAND TO REPORT AND TRANSPORT INJURED PERSONNEL AS NECESSARY.

FOR A MEDICAL EMERGENCY: IDENTIFY ON SCENE INCIDENT COMMANDER BY NAME AND POSITION AND ANNOUNCE "MEDICAL EMERGENCY" TO INITIATE RESPONSE FROM IMT COMMUNICATIONS/DISPATCH.

Use the following items to communicate situation to communications/dispatch.

1. CONTACT COMMUNICATIONS / DISPATCH (Verify correct frequency prior to starting report)

Ex: "Communications, Div. Alpha. Stand-by for Emergency Traffic."

2. INCIDENT STATUS: Provide incident summary (including number of patients) and command structure.

Ex: "Communications, I have a Red priority patient, unconscious, struck by a falling tree. Requesting air ambulance to Forest Road 1 at (Lat./Long.) This will be the Trout Meadow Medical, IC is TFLD Jones. EMT Smith is providing medical care."

Severity of Emergency / Transport Priority	<input type="checkbox"/> RED / PRIORITY 1 Life or limb threatening injury or illness. Evacuation need is IMMEDIATE <i>Ex: Unconscious, difficulty breathing, bleeding severely, 2^o – 3^o burns more than 4 palm sizes, heat stroke, disoriented.</i> <input type="checkbox"/> YELLOW / PRIORITY 2 Serious Injury or illness. Evacuation may be DELAYED if necessary. <i>Ex: Significant trauma, unable to walk, 2^o – 3^o burns not more than 1-3 palm sizes.</i> <input type="checkbox"/> GREEN / PRIORITY 3 Minor Injury or illness. Non-Emergency transport <i>Ex: Sprains, strains, minor heat-related illness.</i>	
Nature of Injury or Illness & Mechanism of Injury		<i>Brief Summary of Injury or Illness (Ex: Unconscious, Struck by Falling Tree)</i>
Transport Request		<i>Air Ambulance / Short Haul/Hoist Ground Ambulance / Other</i>
Patient Location		<i>Descriptive Location & Lat. / Long. (WGS84)</i>
Incident Name		<i>Geographic Name + "Medical" (Ex: Trout Meadow Medical)</i>
On-Scene Incident Commander		<i>Name of on-scene IC of Incident within an Incident (Ex: TFLD Jones)</i>
Patient Care		<i>Name of Care Provider (Ex: EMT Smith)</i>

3. INITIAL PATIENT ASSESSMENT: Complete this section for each patient as applicable (start with the most severe patient)

Patient Assessment: See IRPG page 106

Treatment:

4. TRANSPORT PLAN:

Evacuation Location (if different): (Descriptive Location (drop point, intersection, etc.) or Lat. / Long.) Patient's ETA to Evacuation Location:

Helispot / Extraction Site Size and Hazards:

5. ADDITIONAL RESOURCES / EQUIPMENT NEEDS:

Example: Paramedic/EMT, Crews, Immobilization Devices, AED, Oxygen, Trauma Bag, IV/Fluid(s), Splints, Rope rescue, Wheeled litter, HAZMAT, Extrication

6. COMMUNICATIONS: Identify State Air/Ground EMS Frequencies and Hospital Contacts as applicable

Function	Channel Name/Number	Receive (RX)	Tone/NAC *	Transmit (TX)	Tone/NAC *
COMMAND					
AIR-TO-GRND					
TACTICAL					

7. CONTINGENCY: Considerations: If primary options fail, what actions can be implemented in conjunction with primary evacuation method? Be thinking ahead.

8. ADDITIONAL INFORMATION: Updates/Changes, etc.

REMEMBER: Confirm ETA's of resources ordered. Act according to your level of training. Be Alert. Keep Calm. Think Clearly. Act Decisively.