



Cerro Pelado

NM-SNF-000049, P3PK47 (0310)

**Operational Period:
Sunday, May 1, 2022
0700 – May 2, 2022 0700**

Check - In



Avenza Maps



IAP

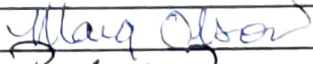
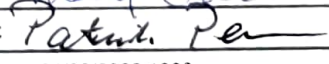


Cerro Pelado Communication Phone
561-527-0804



**SA Red Team
Incident Commander – Steve Parrish**

INCIDENT OBJECTIVES (ICS 202)

1. Incident Name:		2. Operational Period: 0700 - 0700	
CERRO PELADO		Date/Time From: 05/01/2022 0700 SUN	Date/Time To: 05/02/2022 0700 MON
3. Objective(s):			
Management Objectives			
<p>1) Protection of human life and safety is the first priority for all actions taken on a wildfire and can overrule all other strategic/management objectives and incident requirements.</p> <p>2) Base management decisions on meeting objectives while also minimizing the risk of COVID-19 exposures to responders and the public. COVID-19 considerations may alter how you meet goals but should not lead to higher risk tactics.</p> <p>3) Maintain and strengthen relationships with the Santa Fe National Forest, private landowners, the public, cooperators and partners by providing timely and accurate information.</p> <p>4) Protect the unique attributes of impacted watersheds through actions that minimize sedimentation and invasive species movement.</p> <p>5) Protect impact to cultural resources through consultation with local forest specialists.</p>			
Control Objectives			
<p>1) Protection of human life and safety is the first priority for all actions taken and shall override all other incident control objectives. Evaluate risk vs. benefit in strategic and tactical planning and only commit operational resources to actions that have the highest probability of success.</p> <p>2) Keep fire out of Jemez Canyon.</p> <p>3) Keep fire south of the community SLP and south of state route 4; keep fire west of forest road 268, 286, and Tent Rock Ranch Rd.; keep fire north of Bear Spring Rd; keep fire east of forest road 266 and 271; keep fire north of forest road 270</p> <p>4) Minimize retardant impacts to Jemez Natural Recreation Area.</p> <p>5) Protect values at risk in the Valles Caldera National Preserve including watersheds, visitor and administrative infrastructure, historic structures, cultural resources, and important wildlife habitats.</p> <p>6) Provide initial attack resources to respond to any new ignitions within the TFR area to limit potential size and growth.</p>			
4. Operational Period Command Emphasis:			
<p>Stop, Think, Discuss then Act, and ensure LCES is in place prior to engaging the fire or Initial Response fire.</p> <p>The Cerro Pelado fire receives a strategic, risk-based response, commensurate with the threats and opportunities, and uses the full spectrum of management actions, that consider fire and fuel conditions, weather, values at risk, and resources available.</p>			
General Situational Awareness:			
<ul style="list-style-type: none"> • Continued low RHs • No predicted precipitation for several days 			
WEATHER DISCUSSION: Unusually early start to fire season. Critical to extreme fire weather for the next several days. Entire area is experiencing extended drought. Please see daily weather forecast for detailed report.			
7. Prepared by: MARG OLSON		Position/Title: PLANNING SECTION CHIEF	Signature: 
8. Approved by Incident Commander:		Name: STEVE PARRISH	Signature: 
ICS 202	IAP Page		Date/Time: 04/30/2022 1800

ORGANIZATION ASSIGNMENT LIST (ICS 203)

1. Incident Name:		2. Operational Period: 0700 - 0700	
CERRO PELADO		Date/Time From: 05/01/2022 0700 SUN	Date/Time To: 05/02/2022 0700 MON
3. Incident Commander(s) and Command Staff:		READ THOMPSON, LISA	
IC/UC	PARRISH, STEVE G	6. Logistics Section:	
DEPUTY	PEARSON, PAT	CHIEF	BROWN, SALLY; ARTEAGA, JANE
SAFETY OFFICER	RIVERS, TONY; HAWKINS, TOMMY; LIDDELL, BRAD; STONE, DAVID	SUPPLY UNIT	PIPER, TOM
INFORMATION OFFICER	HIBBARD, CATHERINE; AURIEMMO, LESLIE; STRAWSER, BONNIE (VIRTUAL); ENGLE, JASON (T)	FACILITIES UNIT	ADAMS, SUSANNE; RICKARD, JAMES (T)
LIAISON OFFICER	STEVENS, PAUL; ALLISON, STEPHANIE (T); WHALEN, RHEA (T)	GROUND SUPPORT UNIT	JOHNSON, ROBERT;
4. Agency/Organization Representative(s):		COMMUNICATIONS UNIT	STEARNS, BARRY; RADZIVILL, DAVID (T)
Agency/Organization	Name	MEDICAL UNIT	ADLER, FRED; ARNETT, NICK
		SECURITY UNIT	BRADFORD, KAREN L; FAGERMAN, DAVIN
USFS SANTA FE	CRESS, DEBBIE; MARSHALL, JEREMY; ELMORE, LANCE (FMO); YEN, LESLEY	FOOD UNIT	LEGGINS, CLYDE
NEW MEXICO FORESTRY DIVISION	CRANE, LAWRENCE	7. Operations Section:	
NPS VALLES CALDERA	SILVA-BANUELOS, JORGE	OPS SECTION CHIEF	MYERS, PETER; DAVIS, MIKE; RAMSAY, JOHN (T)
NPS BANDELIER	RODGERS, MARLA; THIVENER, JASON	PLANNING OPS	EDGE, VICK; COOK, CHAD (T)
TRIBAL LIAISON	MONTES, REUBEN	Branch	I
LOS ALAMOS NATIONAL LABORATORY	NIETO, RICH	BRANCH DIRECTOR	MORTON, HEATH
IARR FEDERAL RESOURCES NM AND AZ	GIBBS, PAUL	DIVISION/GROUP	F BURGETT, JOEL; MCKINNON, BLAINE (T)
5. Planning Section:		DIVISION/GROUP	M WARD, MIKE D
CHIEF	FORDER, MISSY; OLSON, MARG	DIVISION/GROUP	A/Z PASCARELLA, ANDY
RESOURCES UNIT	PHILLIPS, BRITTANY B; AUBUCHON, RICH; SOBIESKI, SUE (VIRTUAL) (T)	DIVISION/GROUP	R ALVES, FRANK; HELFFENSTIEN, LUKE (T)
SITUATION UNIT	KETT, SUSAN R	DIVISION/GROUP	STRUCTURE ROBERTSON, CRAIG
DEMOBILIZATION UNIT	THOMAS, DONNA L	DIVISION/GROUP	IA SCHROEDER, KRIS
FIRE BEHAVIOR ANALYST	COONS, ALLISON;	Branch	II
HUMAN RESOURCE SPECIALIST	SUMMY, JANINE	BRANCH DIRECTOR	TAYLOR, CORDELL
TRAINING SPECIALIST	RIVELLE, RICHARD	DIVISION/GROUP	NIGHT EDWARDS, AARON
GIS SPECIALIST	BARNES, TOMMY M; KIRSCH, ANDY; SHELLEY, MICHAEL; GATES, KATHERINE ELIZABETH (T)	7b. Air Operations Branch:	
TECHNOLOGY SUPPORT SPECIALIST	FARMER, TONY; PADDOCK, BRIAN; WEBB, KELLY (T)	AIR OPS BRANCH DIRECTOR	HOWARD, LYNN
INCIDENT METEOROLOGIST	STEARNS, SCOTT	AIR SUPPORT SUPERVISOR	MASON, JOHN
READ	SILVA, ANDRE; PITTENGER, DAVE; BAISDEN, BECKY;	HELIBASE MANAGER	KLEISEN, BRIAN
9. Prepared By:		8. Finance/Administration Section:	
Name:	MARG OLSON	CHIEF	MEREDITH, JAMES M; WARNER, JOHN R
Position/Title:	PLANNING SECTION CHIEF	TIME UNIT	WINKLER, KIMBERLY
Signature:		PROCUREMENT UNIT	PELCH, GEMAA
ICS 203	IAP Page	COMPENSATION UNIT	LOWDER, DIANE
		COST UNIT	TRAVIS, DIANE
		Date/Time:	04/30/2022 1800



To: All Incident Personnel, Cerro Pelado Fire

As Southern Area National Type I Incident Commander, I am committed to a policy of “zero tolerance” of inappropriate behavior during incident operations. Any form of harassment, discriminatory practices, or disrespectful behavior will not be tolerated. Known or reported acts will be dealt with appropriately.

I am particularly concerned about the perception that alcohol has a place in any of the Incident facilities. It is not appropriate to indulge in alcoholic beverages during any fire assignment.

The National Team from the Southern Region has a policy of “NO ALCOHOL” from the time of dispatch until the time of physical release from the Incident. Members of the Team voluntarily comply with this policy; all incident personnel will be expected to do so also.

We endorse, support, and expect an attitude of mutual respect for all Incident personnel and the public we serve. We also, endorse the attitude and work ethic that places “Safety First, every time on every Incident.” We expect nothing less.

/s/Steve Parrish

Incident Commander

SAIMT 1



INCIDENT Weather Forecast



Forecast No: 8
Prediction For: Sunday
Shift Date: May 01, 2022
Forecast Issued: April 30, 2022 at 1800

Name of Incident: Cerro Pelado Fire
Unit: Santa Fe NF
Incident Meteorologist: Scott Stearns
 (208) 577-1617

Discussion: CRITICAL southwest winds become strong and gusty this afternoon ahead of a cold front which is expected to move through the area tonight. However, some of the strongest gusts in drainages near Divisions Foxtrot and Mike could occur between 2100 and 0300 as the winds turn slightly northwest behind the front. Additionally, a very well-mixed atmosphere could lead to high column growth today. Cooler and more stable conditions under lighter winds are expected on Monday.

Forecast for Today:

*****Red Flag Warning 1100-2200 for gusty winds and low RHs*****

Sky/Weather:

Mostly sunny

	<u>Jemez Springs 8,000'</u>		<u>Cerro Pelado Pk 9,400'</u>	
Max Temperature:	73		66	°F
Min RH:	7		8	%
Wind (20 FT):	Weak inversion breaking between 0900 and 1000. Dominate southwest winds could turn slightly toward the west around sunset as they begin to slow.			
...	SW	16	SW	18 mph
...	Gusts:	30	Gusts:	35 mph
Haines Index:	6		6	
LAL:	1		1	
Chance of Precipitation:	0		0	%
Tonight's Min Temperature:	41		34	°F
Tonight's Max RH:	35		35	%
Tonight's Wind (20 FT):	Moderate inversion setting in between 2000 and 2100. Gusty northwest winds up to 45 mph continue in southeast drainages of Divisions Foxtrot and Mike through 0300.			
...	W	8	WNW	15 mph
...	Gusts:	25	Gusts:	40 mph
Tonight's Haines Index:	6		6	
Tonight's LAL:	1		1	
Tonight's Chnc of Precip:	0		0	%

Forecast for Monday:

Sky/Weather:

Sunny

	<u>Jemez Springs 8,000'</u>		<u>Cerro Pelado Pk 9,400'</u>	
Max / Min Temperature:	67	39	60	32 °F
Min / Max RH:	11	35	12	40 %
Wind (20 FT):	Inversion breaking around 0900.			
...	W	12	W	15 mph
...	Gusts:	23	Gusts:	25 mph
Haines Index:	5		LAL:	1
			Precip Chance:	0



Extended Outlook:

Recent models have increased overnight RH recoveries slightly, but otherwise the forecast remains dry. Another frontal passage is possible again on Tuesday night or Wednesday. This will cause day-to-day wind direction changes, generally from the west or southwest.

	<u>Max T</u>	<u>Min T</u>	<u>Min RH</u>	<u>Max RH</u>	<u>Ridge Winds @ 1500</u>	<u>Weather</u>
8,600'						
Tue:	70	38	10	40	SW @ 16 G27	
Wed:	62	34	13	45	W @ 15 G25	
Thu:	64	37	12	40	W @ 13 G23	

If you have weather observations, please provide them to the IMET / FBAN.

FIRE BEHAVIOR FORECAST

FORECAST NUMBER: 08	TYPE OF FIRE: Wildland, Type 1	
FIRE NAME: Cerro Pelado	OPERATIONAL PERIOD: Day Shift	
DATE ISSUED: 4/30/22 TIME ISSUED: 1800	SHIFT DATE: Sunday May 1, 2022	
UNIT: Santa Fe NF	SIGNED: Alison Coons, FBAN	
WEATHER SUMMARY:	Fire Environment & Danger Information	
<p>Local Thresholds – Watch Outs Min RH 8%, Winds 8 Gusts to 20 mph, Temp>70, Heavy Fuels <9%</p> <p style="text-align: center;"><u>Today’s Significant Fire Weather:</u> Gusting winds, Single Digit Humidity and Haines Index of 6.</p>	 SNF West Pocket Card	 SWCC Fire Danger Page

FIRE BEHAVIOR:

GENERAL:

Strong winds and Haines index of 6 will create conditions for rapid fire growth and intensity, particularly where winds, slope and drainages align. Potential for very active fire behavior is expected today on the east and north sides of the fire. Torching possible with long range spotting likely.

Current Fire Environment Conditions:

Fine Dead Fuel Moisture = 5%, 1,000 Hour Fuel Moisture = 8-10%, Live Shrub Moisture = <82%
ERC’s remain around the 90th percentile @ Jemez RAWs, but at or near maximum value for this date.

Fire Behavior based on MAXIMUM values for the fuel models shown, exposed fuels on steep slope.

Fuel Model	Rate of Spread	Flame Length
Slash w/ Grass/Shrub	12-40chains/hour	5-15 Feet Head Fire 1-3 Backing Fire
Timber	6-15 chains/hour	7-15 feet

There is potential for spotting distances of .25 to a mile
Probability of Ignition = **84%**

Specific Areas of Concern:

Alpha and Zulu– Continuation of west / southwest winds will support operations by pushing heat interior across most of the division but may encourage growth on the north side and near the division F break.

Romeo / Mike / Fox Trot: Fire is expected to continue moving to the east and south toward Oaks Mesa with increased activity where wind and fuels align. Continued burning of heavy pockets of unburned fuels may exhibit very active burning with single and group torching and possible spotting up to a mile is possible.

AIR OPERATIONS:

Wind gusts near 30mph may restrict aviation operations near the end of the shift. Smoke production at times may cause limited visibility over the eastern portion of the incident.

SAFETY:

Haines index of 6 should keep us all looking up down and around as rapid changes in fire behavior are likely.

Send any fire behavior on site weather observations or photos to: alisoncc66@gmail.com 606-260-0526



HEALTH AND SAFETY MESSAGE

“We don’t plan on luck to be safe, we plan on good risk management and good decisions”....the Red Team

Major Hazards and Risks: WUI, Backing Accidents, Red Flag Warning

WUI** - As resources continue to work in the Cochiti Mesa, Peralto and Paliza Canyon areas, hazards around homes and other structures may be encountered. Identify Wildland Urban Interface in existing fires and in initial attack area. **Size up WUI hazards – Take the time to read the IRPG pages 12-15 (new yellow edition).

***Backing Accidents** – There has been an increase in backing accidents in recent days. Make sure the area behind you is clear of objects. When backing, have a spotter at all times.*

***Red Flag Warning** – A Red Flag Warning is in affect from 1100-2200 today for gusty winds and low RH. Make sure LCES is in place before engaging and pay attention to any fire weather updates throughout the day. Gusty winds have caused an increase in falling snags and also green trees since we took over command of the incident.*



Common Tactical Hazards

- *Poor communications due to rapidly emerging fire or an isolated area of a large fire.
- *Suppression resources are fatigued or inadequate.
- *Assignment or escape route depends on aircraft support.
- *Unexpected weather changes
- *Wildland/urban interface operations

Red Team Safety Officers: Tony Rivers, Tommy Hawkins, Brad Lidell, Dave Stone

Division/Group Assignment List (ICS 204 WF)
Controlled Unclassified Information//Basic

1. Incident Name:			3.			
CERRO PELADO			Branch:		Division/Group	
2. Operational Period: 0700 - 0700			I		A/Z	
Date/Time From: 05/01/2022 0700	SUN	Date/Time To: 05/02/2022 0700				
4. Operations Personnel						
OPERATIONS CHIEF		P. MYERS, M. DAVIS V. EDGE, C, COOK (T), J. RAMSAY (T)		BRANCH DIRECTOR		HEATH MORTON
DIVISION/GROUP SUPERVISOR		ANDY PASCARELLA		SAFETY		TOMMY HAWKINS
5. Resources Assigned this Period						
Strike Team / Task Force / Resource Designator	LWD	Leader	Number Persons	Drop Off PT./Time	Pick Up PT./Time	
O-106 TFLD	05/10	CHRISTINE WEIR KOETTER	1	BASE CAMP/0700	BASE CAMP/1900	
C-17 HC2 DESCANSO CREW 5	05/13	KELLEE GRIGGS	21	BASE CAMP/0700	BASE CAMP/1900	
ENG3 ENGINE 304	05/07	PETER MUNRO	3	BASE CAMP/0700	BASE CAMP/1900	
E-130 ENG3 COCONINO	05/06	JOEL PRESMYK	5	BASE CAMP/0700	BASE CAMP/1900	
E-131 ENG3 SAN JUAN COUNTY	05/09	AARION AUSTIN	3	BASE CAMP/0700	BASE CAMP/1900	
E-129 ENG3 ENGINE 1441 NM-BLM	05/06	FORREST PETERMAN	3	BASE CAMP/0700	BASE CAMP/1900	
E-2 ENG6 DEBEQUE	05/08	VOORHEES	2	BASE CAMP/0700	BASE CAMP/1900	
E-105 ENG6 RAMOS EAGLE	05/08	CORBIN LESTER	3	BASE CAMP/0700	BASE CAMP/1900	
E-9 WTT2 TOUGH EQUIPMENT	05/09	JOHN CULTRIP	1	BASE CAMP/0700	BASE CAMP/1900	
E-114 WTT2 COWBOY	05/07	WYATT LACKMAN	2	BASE CAMP/0700	BASE CAMP/1900	
WTT2 TENDER 26 HEMEZ FIRE				BASE CAMP/0700	BASE CAMP/1900	
E-151 GRD2	05/12	ERIC GIRON	1	BASE CAMP/0700	BASE CAMP/1900	
E-N153 UTV				BASE CAMP/0700	BASE CAMP/1900	
O-141 MED 2	05/09	DEAN CARPENTER	2	BASE CAMP/0700	BASE CAMP/1900	
E-59 AMBU	05/10	BILL BOYD	2	BASE CAMP/0700	BASE CAMP/1900	
6. Control Operations/Work Assignments:						
<p>Task: Continue to provide engine resource presence for the community SLP, and mop up control lines near SLP structures. Hold and mop up handline from the Community SLP to the 10 Q, 10 A, and 10 DB area towards DP 30. Mop up 50 feet along FS 10, FS 270, FS 270C, and handlines. Improve lines as needed.</p>						
8. Division/Group Communication Summary						
Function	Channel	RX Frequency N/W	RX Tone/NAC	TX Frequency N/W	TX Tone/NAC	Mode
COMMAND	2	169.5375 N	146.2	164.7125 N	146.2	A
COMMAND	1	169.7500 N	146.2	167.1000 N	146.2	A
COMMAND	11	172.3000 N		165.0125 N		A
TACTICAL	6	168.2000 N	146.2	168.2000 N	146.2	A
AIR TO GROUND	13	166.8250 N		166.8250 N		A
9. Prepared By (Resource Unit Leader)			Approved By (Planning Section Chief)		Date	Time
BRITTANY PHILLIPS			MISSY FORDER		04/30/2022	1800

Division/Group Assignment List (ICS 204 WF)

Controlled Unclassified Information//Basic

1. Incident Name:				3.			
CERRO PELADO				I		A/Z	
2. Operational Period: 0700 - 0700							
Date/Time From: 05/01/2022 0700 SUN		Date/Time To: 05/02/2022 0700 MON					
4. Operations Personnel							
OPERATIONS CHIEF		P. MYERS, M. DAVIS V. EDGE, C, COOK (T), J. RAMSAY (T)		BRANCH DIRECTOR		HEATH MORTON	
DIVISION/GROUP SUPERVISOR		ANDY PASCARELLA		SAFETY		TOMMY HAWKINS	
6. Control Operations/Work Assignments:							
<p>Purpose: To reduce the fire threat to the community SLP, and keep fire progression east of FS-10. Hold fire north of FS 270, FS 270 C network, and east of FS 10.</p> <p>End State: Lift evacuations and return residents to community SLP, and fire progression east of FS 10. Hold fire within the identified road system to minimize impact on landscape.</p>							
7. Special Instructions:							
<ul style="list-style-type: none"> Briefing will be held at base camp 0700. Coordinate with READ before ground disturbance. Coordinate with Sandoval County, State Police, and Tribal Nations Identify impassable roads with GPS locations in Field Map. Do not post photos with archaeological resources that have location information. Leave all gates as you found them, either opened or closed. If the gate was closed when you arrived, close it as you leave. Identify IA resources off each division to support IA under TFR. ** IN THE EVENT OF AN IWI: CONTACT COMMUNICATIONS ON COMMAND 							
8. Division/Group Communication Summary							
Function	Channel	RX Frequency N/W	RX Tone/NAC	TX Frequency N/W	TX Tone/NAC	Mode	
COMMAND	2	169.5375 N	146.2	164.7125 N	146.2	A	
COMMAND	1	169.7500 N	146.2	167.1000 N	146.2	A	
COMMAND	11	172.3000 N		165.0125 N		A	
TACTICAL	6	168.2000 N	146.2	168.2000 N	146.2	A	
AIR TO GROUND	13	166.8250 N		166.8250 N		A	
9. Prepared By (Resource Unit Leader)			Approved By (Planning Section Chief)			Date	Time
BRITTANY PHILLIPS			MISSY FORDER			04/30/2022	1800

Division/Group Assignment List (ICS 204 WF)
Controlled Unclassified Information//Basic

1. Incident Name:			3.			
CERRO PELADO			Branch:		Division/Group	
2. Operational Period: 0700 - 0700			I		F	
Date/Time From: 05/01/2022 0700	SUN	Date/Time To: 05/02/2022 0700				
4. Operations Personnel						
OPERATIONS CHIEF		P. MYERS, M. DAVIS V. EDGE, C. COOK (T), J. RAMSAY (T)		BRANCH DIRECTOR		HEATH MORTON
DIVISION/GROUP SUPERVISOR		JOEL BURGETT BLAINE MCKINNON (T)		SAFETY		DAVE STONE
5. Resources Assigned this Period						
Strike Team / Task Force / Resource Designator		LWD	Leader	Number Persons	Drop Off PT./Time	Pick Up PT./Time
HEQB		05/14	HAYS, RUSSELL	1	BASE CAMP/0700	BASE CAMP/1900
C-1 T2IA CALIFORNIA 63		05/07	RAY BATRES	20	BASE CAMP/0700	BASE CAMP/1900
C-12 T2 BIRRUETA		05/08	CRISTIAN JUAREZ	20	BASE CAMP/0700	BASE CAMP/1900
C-13 T2 MOUNTAINEER CONTRACTING		05/09	JUAN PEREZ	20	BASE CAMP/0700	BASE CAMP/1900
C-19 T2 PACO#11		05/09	DEREK FINCH	20	BASE CAMP/0700	BASE CAMP/1900
E-5 ENG3 STONE MOUNTAIN PROTECTION		05/05	JOHN DICKERSON	4	BASE CAMP/0700	BASE CAMP/1900
O-123 SMOD NM MODULE 6		05/07	MATT HEFFLER	4	BASE CAMP/0700	BASE CAMP/1900
E-109 ENG4 ARROW FIRE & LAND MANAGEMENT		05/09	STEVE MARROW	3	BASE CAMP/0700	BASE CAMP/1900
E-107 ENG5 LAPOINT FD		05/09	LANE HARRIS	3	BASE CAMP/0700	BASE CAMP/1900
E-141 ENG6 310 DUST CONTROL		05/11	CHAD MORRIS	3	BASE CAMP/0700	BASE CAMP/1900
E-155 ENG6 LA-7		05/07	LIEMER	3	BASE CAMP/0700	BASE CAMP/1900
WTT1 LA T-1			CROCKETT	2	BASE CAMP/0700	BASE CAMP/1900
WTT2 LA T-5			AUSTIN	2	BASE CAMP/0700	BASE CAMP/1900
E-104DOZ2 CECIL LOGGING		05/10	ROCKY FITHIN	2	BASE CAMP/0700	BASE CAMP/1900
E-168 DOZ2		05/14	GEORGE BEEN	1	BASE CAMP/0700	BASE CAMP/1900
E-169 DOZ2		05/14	CORLEY HENDERSON	2	BASE CAMP/0700	BASE CAMP/1900
E-101 DOZ3 MOORE'S QUALITY EARTHMOVING		05/11	ERIC BLEVINS	1	BASE CAMP/0700	BASE CAMP/1900
E-128 UTV TYPE 7 LA		05/05	KELLY STERNA	2	BASE CAMP/0700	BASE CAMP/1900
O-140 MED 1		05/09	CODY KELLER	2	BASE CAMP/0700	BASE CAMP/1900
8. Division/Group Communication Summary						
Function	Channel	RX Frequency N/W	RX Tone/NAC	TX Frequency N/W	TX Tone/NAC	Mode
COMMAND	1	169.7500 N	146.2	167.1000 N	146.2	A
COMMAND	2	169.5375	146.2	164.7125	146.2	A
COMMAND	11	172.3000 N		165.0125 N		A
TACTICAL	5	168.0500 N	146.2	168.0500 N	146.2	A
AIR TO GROUND	13	166.8250 N		166.8250 N		A
9. Prepared By (Resource Unit Leader)			Approved By (Planning Section Chief)		Date	Time
BRITTANY PHILLIPS			MISSY FORDER		04/30/2022	1800

Division/Group Assignment List (ICS 204 WF)

Controlled Unclassified Information//Basic

1. Incident Name:			3.			
CERRO PELADO			I	F		
2. Operational Period: 0700 - 0700						
Date/Time From: 05/01/2022 0700	SUN	Date/Time To: 05/02/2022 0700	MON			
4. Operations Personnel						
OPERATIONS CHIEF		P. MYERS, M. DAVIS V. EDGE, C. COOK (T), J. RAMSAY (T)		BRANCH DIRECTOR		HEATH MORTON
DIVISION/GROUP SUPERVISOR		JOEL BURGETT BLAINE MCKINNON (T)		SAFETY		DAVE STONE
5. Resources Assigned this Period						
Strike Team / Task Force / Resource Designator	LWD	Leader	Number Persons	Drop Off PT./Time	Pick Up PT./Time	
E-62 AMBU	05/09	AMOLDO RIVERA	2	BASE CAMP/0700	BASE CAMP/1900	
6. Control Operations/Work Assignments:						
<p>Task: Continue structure protection on Cochiti Mesa. Continue to establish primary and alternate lines along Cochiti Mesa.</p> <p>Purpose: Protect structures on Cochiti Mesa and check the fire progression to the northwest.</p> <p>End State: Lessening the footprint of the Cerro Pelado Fire while minimizing the impact to private lands.</p>						
7. Special Instructions:						
<ul style="list-style-type: none"> Briefing will be held at base camp 0700. Coordinate with READ before ground disturbance. Coordinate with Sandoval County, State Police, and Tribal Nations Identify impassable roads with GPS locations in Field Map. Do not post photos with archaeological resources that have location information. Leave all gates as you found them, either opened or closed. If the gate was closed when you arrived, close it as you leave. Identify IA resources off each division to support IA under TFR. ** IN THE EVENT OF AN IWI: CONTACT COMMUNICATIONS ON COMMAND 						
8. Division/Group Communication Summary						
Function	Channel	RX Frequency N/W	RX Tone/NAC	TX Frequency N/W	TX Tone/NAC	Mode
COMMAND	1	169.7500 N	146.2	167.1000 N	146.2	A
COMMAND	2	169.5375	146.2	164.7125	146.2	A
COMMAND	11	172.3000 N		165.0125 N		A
TACTICAL	5	168.0500 N	146.2	168.0500 N	146.2	A
AIR TO GROUND	13	166.8250 N		166.8250 N		A
9. Prepared By (Resource Unit Leader)			Approved By (Planning Section Chief)		Date	Time
BRITTANY PHILLIPS			MISSY FORDER		04/30/2022	1800

Division/Group Assignment List (ICS 204 WF)

Controlled Unclassified Information//Basic

1. Incident Name:			3.			
CERRO PELADO			I	M		
2. Operational Period: 0700 - 0700						
Date/Time From:	05/01/2022 0700	SUN	Date/Time To:	05/02/2022 0700	MON	
4. Operations Personnel						
OPERATIONS CHIEF	P. MYERS, M. DAVIS V. EDGE, C. COOK (T), J. RAMSAY (T)		BRANCH DIRECTOR	HEATH MORTON		
DIVISION/GROUP SUPERVISOR	MIKE WARD		SAFETY			
5. Resources Assigned this Period						
Strike Team / Task Force / Resource Designator	LWD	Leader	Number Persons	Drop Off PT./Time	Pick Up PT./Time	
6. Control Operations/Work Assignments:						
Task: Identify primary lines on Pueblo tribal lands coordinating with tribes.						
Purpose: Limit fire spread on tribal lands using natural barriers and road systems to lessen impacts to cultural and natural resources.						
End State: Lessen the footprint of the Cerro Pelado Fire while minimizing the impacts on tribal lands.						
7. Special Instructions:						
<ul style="list-style-type: none"> Briefing will be held at base camp 0700. Coordinate with READ before ground disturbance. Coordinate with Sandoval County, State Police, and Tribal Nations Identify impassable roads with GPS locations in Field Map. Do not post photos with archaeological resources that have location information. Leave all gates as you found them, either opened or closed. If the gate was closed when you arrived, close it as you leave. Identify IA resources off each division to support IA under TFR. ** IN THE EVENT OF AN IWI: CONTACT COMMUNICATIONS ON COMMAND 						
8. Division/Group Communication Summary						
Function	Channel	RX Frequency N/W	RX Tone/NAC	TX Frequency N/W	TX Tone/NAC	Mode
COMMAND	1	169.7500 N	146.2	167.1000 N	146.2	A
COMMAND	2	169.5375 N	146.2	164.7125 N	146.2	A
COMMAND	11	172.3000 N		165.0125 N		A
TACTICAL	10	166.7750 N	146.2	166.7750 N	146.2	A
AIR TO GROUND	13	166.8250 N		166.8250 N		A
9. Prepared By (Resource Unit Leader)		Approved By (Planning Section Chief)		Date	Time	
BRITTANY PHILLIPS		MISSY FORDER		04/30/2022	1800	

Division/Group Assignment List (ICS 204 WF)
Controlled Unclassified Information//Basic

1. Incident Name:			3.			
CERRO PELADO			Branch:		Division/Group	
2. Operational Period: 0700 - 0700			I		R	
Date/Time From: 05/01/2022 0700 SUN		Date/Time To: 05/02/2022 0700 MON				
4. Operations Personnel						
OPERATIONS CHIEF		P. MYERS, M. DAVIS V. EDGE, C. COOK (T), J. RAMSAY (T)		BRANCH DIRECTOR HEATH MORTON		
DIVISION/GROUP SUPERVISOR		FRANK ALVES LUKE HELFENSTIEN (T)		SAFETY BRAD LIDELL		
5. Resources Assigned this Period						
Strike Team / Task Force / Resource Designator		LWD	Leader	Number Persons	Drop Off PT./Time	Pick Up PT./Time
C-7 T1 MORMON LAKE IHC		05/08	SARA SWEENEY	21	HMC/0700	HMC/1900
C-14 T2IA TAYLOR		05/08	VERNON JACKSON	19	HMC/0700	HMC/1900
C-9 T2 ROCHA		05/08	JORGE DURAN	20	HMC/0700	HMC/1900
C-18 T2 GFP		05/09	JOHN FITTS	20	HMC/0700	HMC/1900
E-106 ENG6 GREY WILDLAND		05/09	JAKE WARDEN	3	HMC/0700	HMC/1900
E-103 DOZ2 WEAVER GRADING		05/09	KEVIN GAINES	2	HMC/0700	HMC/1900
E-102 DOZ3 BALDWIN FORESTRY		05/11	DAVID BALDWIN	2	HMC/0700	HMC/1900
O-17 REAF		05/07	BECKY BAISDEN	1	HMC/0700	HMC/1900
O-102 REAF		05/07	JORDAN JARRETT	1	HMC/0700	HMC/1900
O-117 REAF		05/08	LISA THOMPSON	1	HMC/0700	HMC/1900
O-99 REMS		05/08	TANNER SMITH	4	HMC/0700	HMC/1900
6. Control Operations/Work Assignments:						
Task: Continue establishing primary lines south to the Pueblo tribal lands.						
Purpose: Keep fire in 2011 Los Conchas fire footprint.						
End State: Lessening the foot print of the Cerro Pelado fire while minimizing the impact to private lands.						
7. Special Instructions:						
<ul style="list-style-type: none"> Briefing will be held at base camp 0700. Coordinate with READ before ground disturbance. Coordinate with Sandoval County, State Police, and Tribal Nations Identify impassable roads with GPS locations in Field Map. Do not post photos with archaeological resources that have location information. Leave all gates as you found them, either opened or closed. If the gate was closed when you arrived, close it as you leave. Identify IA resources off each division to support IA under TFR. ** IN THE EVENT OF AN IWI: CONTACT COMMUNICATIONS ON COMMAND 						
8. Division/Group Communication Summary						
Function	Channel	RX Frequency N/W	RX Tone/NAC	TX Frequency N/W	TX Tone/NAC	Mode
COMMAND	2	169.5375 N	146.2	164.7125 N	146.2	A
COMMAND	11	172.3000 N		165.0125 N		A
TACTICAL	8	168.2500 N	146.2	168.2500 N	146.2	A
AIR TO GROUND	13	166.8250 N		166.8250 N		A
9. Prepared By (Resource Unit Leader)		Approved By (Planning Section Chief)		Date	Time	
BRITTANY PHILLIPS		MISSY FORDER		04/30/2022	1800	

Division/Group Assignment List (ICS 204 WF)
Controlled Unclassified Information//Basic

1. Incident Name:			3.			
CERRO PELADO			Branch:		Division/Group	
2. Operational Period: 0700 - 0700			I		STRUCTURE	
Date/Time From: 05/01/2022 0700 SUN	Date/Time To: 05/02/2022 0700 MON					
4. Operations Personnel						
OPERATIONS CHIEF		P. MYERS, M. DAVIS V. EDGE, C. COOK (T), J. RAMSAY (T)		BRANCH DIRECTOR		HEATH MORTON
DIVISION/GROUP SUPERVISOR		CRAIG ROBERTSON				
5. Resources Assigned this Period						
Strike Team / Task Force / Resource Designator		LWD	Leader	Number Persons	Drop Off PT./Time	Pick Up PT./Time
E-111 ENG3 MISSOULA CITY FIRE DEPT		04/09	RANDAL THORPE	3	BASE CAMP/0700	BASE CAMP/1900
ENG4 ENGINE 431 SNF				5	BASE CAMP/0700	BASE CAMP/1900
E-142 ENG6 MT-BDF		05/05	GORDON WEGLEY	4	BASE CAMP/0700	BASE CAMP/1900
E-180 DOZ3		05/14	TONY WALKER	2	BASE CAMP/0700	BASE CAMP/1900
6. Control Operations/Work Assignments:						
<p>Task: Identify structures threatened by the Cerro Pelado wildfire and develop a structure protection plan in coordination with the local cooperating fire agencies. Continue structure protection on Cochiti Mesa.</p> <p>Purpose: Triage and protect all structures identified for structure protection needs.</p> <p>End State: Threat to identified structures has been reduced as much as practical.</p>						
7. Special Instructions:						
<ul style="list-style-type: none"> • Briefing will be held at base camp 0700. • Coordinate with READ before ground disturbance. • Coordinate with Sandoval County, State Police, and Tribal Nations • Identify impassable roads with GPS locations in Field Map. • Do not post photos with archaeological resources that have location information. • Leave all gates as you found them, either opened or closed. If the gate was closed when you arrived, close it as you leave. • Identify IA resources off each division to support IA and TFR. • ** IN THE EVENT OF AN IWI: CONTACT COMMUNICATIONS ON COMMAND 						
8. Division/Group Communication Summary						
Function	Channel	RX Frequency N/W	RX Tone/NAC	TX Frequency N/W	TX Tone/NAC	Mode
COMMAND	1	169.7500 N	146.2	167.1000 N	146.2	A
COMMAND	2	169.5375 N	146.2	164.7125 N	146.2	A
COMMAND	11	172.3000 N		165.0125 N		A
TACTICAL	7	168.6000 N	146.2	168.6000 N	146.2	A
AIR TO GROUND	13	166.8250 N		166.8250 N		A
9. Prepared By (Resource Unit Leader)			Approved By (Planning Section Chief)		Date	Time
BRITTANY PHILLIPS			MISSY FORDER		04/30/2022	1800

Division/Group Assignment List (ICS 204 WF)
Controlled Unclassified Information//Basic


1. Incident Name:			3.			
CERRO PELADO			Branch:		Division/Group	
2. Operational Period: 0700 - 0700			I		IA	
Date/Time From: 05/01/2022 0700	SUN	Date/Time To: 05/02/2022 0700				
4. Operations Personnel						
OPERATIONS CHIEF		P. MYERS, M. DAVIS V. EDGE, C. COOK (T), J. RAMSAY (T)		BRANCH DIRECTOR		HEATH MORTON
DIVISION/GROUP SUPERVISOR		KRIS SCHROEDER		SAFETY		TOMMY HAWKINS
5. Resources Assigned this Period						
Strike Team / Task Force / Resource Designator	LWD	Leader	Number Persons	Drop Off PT./Time	Pick Up PT./Time	
O-108 TFLD	05/11	WILL BERNARD	1	BASE CAMP/0700	BASE CAMP/1900	
C-3 T2 BLUE MOUNTAIN	05/10	JORGE PEREZ	20	BASE CAMP/0700	BASE CAMP/1900	
E-108 ENG6 HART VENTURES	05/11	KYLE COLTEN	3	BASE CAMP/0700	BASE CAMP/1900	
E-140 ENG6 THE GENERAL	05/10	PAUL ANDERSON	3	BASE CAMP/0700	BASE CAMP/1900	
E-143 ENG6	05/10	AUSTIN STOVER	2	BASE CAMP/0700	BASE CAMP/1900	
E-144 ENG6 GUNNISON FPD	05/11	BEN BRACK	4	BASE CAMP/0700	BASE CAMP/1900	
E-150 ENG6 SANDOVAL COUNTY BRUSH 22	05/10	HARRIS TOYA	3	BASE CAMP/0700	BASE CAMP/1900	
E-146 WTT1	05/05	BILL WEST	2	BASE CAMP/0700	BASE CAMP/1900	
E-113 WTS2 BIG CEDAR	05/10	BEN ANDERBERG	1	BASE CAMP/0700	BASE CAMP/1900	
6. Control Operations/Work Assignments:						
Task: Ready stand by for initial attack inside TFR and as requested by cooperators.						
Purpose: Provide initial attack support to assigned response area.						
End State: Provide initial attack support for the TFR and surrounding cooperators.						
7. Special Instructions:						
<ul style="list-style-type: none"> • Briefing will be held at base camp 0700. • Provide support for the Freeloove Fire. • Coordinate with READ before ground disturbance. • Coordinate with Sandoval County, State Police, and Tribal Nations • Identify impassable roads with GPS locations in Field Map. • Do not post photos with archaeological resources that have location information. • Leave all gates as you found them, either opened or closed. If the gate was closed when you arrived, close it as you leave. • Identify IA resources off each division to support IA under TFR. • ** IN THE EVENT OF AN IWI: CONTACT COMMUNICATIONS ON COMMAND 						
8. Division/Group Communication Summary						
Function	Channel	RX Frequency N/W	RX Tone/NAC	TX Frequency N/W	TX Tone/NAC	Mode
COMMAND	1	169.7500 N	146.2	167.1000 N	146.2	A
COMMAND	2	169.5375 N	146.2	164.7125 N	146.2	A
TACTICAL	9	166.7250 N	146.2	166.7250 N	146.2	A
AIR TO GROUND	12	168.3125 N		168.3125 N		A
9. Prepared By (Resource Unit Leader)			Approved By (Planning Section Chief)		Date	Time
BRITTANY PHILLIPS			MISSY FORDER		04/30/2022	1800

Division/Group Assignment List (ICS 204 WF)
Controlled Unclassified Information//Basic

1. Incident Name:			3.			
CERRO PELADO			Branch:		Division/Group	
2. Operational Period: 0700 - 0700			II		NIGHT	
Date/Time From: 05/01/2022 0700	SUN	Date/Time To: 05/02/2022 0700				
4. Operations Personnel						
OPERATIONS CHIEF		P. MYERS, M. DAVIS V. EDGE, C. COOK (T), J.RAMSAY (T)		BRANCH DIRECTOR		CORDELL TAYLOR
DIVISION/GROUP SUPERVISOR		AARON EDWARDS				
5. Resources Assigned this Period						
Strike Team / Task Force / Resource Designator	LWD	Leader	Number Persons	Drop Off PT./Time	Pick Up PT./Time	
E-110 ENG3 OUTBACK FIREFIGHTING	05/10	JIM REILLY	3	BASE CAMP/1900	BASE CAMP/0700	
E-170 ENG5 ELEPHANT BUTTE	05/14	RUSSELL THRUN	3	BASE CAMP/1900	BASE CAMP/0700	
E-1 ENG6 CARBONDALE	05/07	SCOTT EVANS	3	BASE CAMP/1900	BASE CAMP/0700	
E-178 ENG6 UT	05/13	CHRIS LEWIS	2	BASE CAMP/1900	BASE CAMP/0700	
O-131 MED 3	05/09	JEFFREY MOLEN	2	BASE CAMP/1900	BASE CAMP/0700	
E-59 AMBU	05/10	SAGE STEWART	2	BASE CAMP/1900	BASE CAMP/0700	
6. Control Operations/Work Assignments:						
Task: Patrol and monitor along fire lines focusing on values at risk and critical areas of concern as directed from day shift. Engage as needed along fire perimeter.						
Purpose: Ensure safety of fire fighters and protect values at risk						
End State: Safety and values at risk are protected. Priority areas of the fire are secured to provide a successful transition with day shift.						
7. Special Instructions:						
<ul style="list-style-type: none"> • Briefing will be held at base camp 0700. • Coordinate with READ before ground disturbance. • Coordinate with Sandoval County, State Police, and Tribal Nations • Identify impassable roads with GPS locations in Field Map. • Do not post photos with archaeological resources that have location information. • Leave all gates as you found them, either opened or closed. If the gate was closed when you arrived, close it as you leave. • Identify IA resources off each division to support IA under TFR. • ** IN THE EVENT OF AN IWI: CONTACT COMMUNICATIONS ON COMMAND 						
8. Division/Group Communication Summary						
Function	Channel	RX Frequency N/W	RX Tone/NAC	TX Frequency N/W	TX Tone/NAC	Mode
COMMAND	1	169.7500 N	146.2	167.1000 N	146.2	A
COMMAND	2	169.5375 N	146.2	164.7125 N	146.2	A
COMMAND	11	172.3000 N		165.0125 N		A
9. Prepared By (Resource Unit Leader)		Approved By (Planning Section Chief)		Date	Time	
BRITTANY PHILLIPS		MISSY FORDER		04/30/2022	1800	

INCIDENT RADIO COMMUNICATIONS PLAN I-205				1. INCIDENT NAME			2. DATE/TIME PREPARED			3. OPERATIONAL PERIOD DATE/TIME		
				Cerro Pelado			4/30/2022 1700			05/01/22 0700 - 05/02/22 0700		
4. BASIC RADIO CHANNEL UTILIZATION												
Ch #	Function	Channel Name	Assignment	RX Freq	N/W	RX Tone/NAC	TX Freq	N/W	TX Tone/NAC	Mode Analog (A) Digital (D) Mixed (M)	Remarks	
1	Command	CMD 1	DIV A/F/M	169.7500	N	146.2	167.1000	N	146.2	A	CERRO PELADO	
2	Command	CMD 2	DIV R & Z	169.5375	N	146.2	164.7125	N	146.2	A	ROAD 10/270 INTERSECTION	
3	Command	CMD 3	ICP	170.4125	N	146.2	165.9625	N	146.2	A	135 ROAD	
4	Unassigned		Unassigned									
5	Tactical	TAC 1	DIV F	168.0500	N	146.2	168.0500	N	146.2	A		
6	Tactical	TAC 2	DIV A/Z	168.2000	N	146.2	168.2000	N	146.2	A		
7	Tactical	TAC 3	STRUCTURAL PROTECTION	168.6000	N	146.2	168.6000	N	146.2	A		
8	Tactical	TAC 4	DIV R	168.2500	N	146.2	168.2500	N	146.2	A		
9	Tactical	TAC 5	IA	166.7250	N	146.2	166.7250	N	146.2	A		
10	Tactical	TAC 6	DIV M	166.7750	N	146.2	166.7750	N	146.2	A	Night Shift	
11	Command	PELADO	All Divisions	172.3000	N		165.0125	N	131.8	A	Santa Fe Dispatch	
12	Air Ground	A/G 51		168.3125	N		168.3125	N		A	Initial Attack / Local Air to Ground	
13	Air Ground	A/G PRI		166.8250	N		166.8250	N		A		
14	Air Ground	A/G SEC		168.7375	N		168.7375	N		A		
15	Medivac	VMED 28		155.3400	N		155.3400	N	156.7	A	Air Ambulance	
16	AIRGUARD			168.6250	N		168.6250	N	110.9	A		
5. Special Instructions:		USE HUMAN REPEATER WHEN NECESSARY. IF ASSIGNED COMMAND CHANNEL DOES NOT WORK TRY THE OTHER ONE.										
6. I-205 Prepared By: Communications Unit Leader			Name: Barry Stearns					Signature: <i>Barry H Stearns</i>				

1. INCIDENT NAME: Cerro Pelado	2. OPS PERIOD DATE: 5/1/22	START TIME: 0900	END TIME: 2030	SUNRISE 0612	SUNSET 1950
---	--------------------------------------	----------------------------	--------------------------	------------------------	-----------------------

3. REMARKS and RISK MITIGATIONS: All missions will be analyzed in terms of hazards and risks. Insure to brief for all IA missions to include new frequencies, ground contacts and other aircraft. High level to low level recon of each new LZ/Dipsite  Retardant Avoidance areas:	4. READY ALERT AIRCRAFT: IA 7HE See Medical Plan	5. TFR # 2/6898 Freq: 118.825 Surface ≥ 14,000' MSL See NOTAM for Poly
---	---	--

6. PERSONNEL	NAME	PHONE #	7. FREQUENCIES	AM	FM	8. FIXED-WING
AOBD	Lynne Howard	678-699-3266	A/A (Fixed/TFR)	118.825		Air Attack: 78NA / 690B / Base: ABQ
ASGS	John Mason	865-336-6664	A/A (Rotor)	121.325		Lead Planes/Airtankers - Order through Air Attack If air attack is not up---order through AOBD.
ATGS ATGS-T	Greg Haxby Adam Soper	208-709-2459	A/G Command		166.8250	TA49 35° 49.6644'N x 106° 19.0908'W Santa Fe Airport (SAF) 35° 37.02'N x 106° 05'.22'W
HEBM (Santa Fe)	Brian Kleisen	505-467-9351	A/G Tactical		168.7375	
HMGB (7HE)	Josh Brookshire	505-670-9385	A/G 51 (IA)		168.3125	Costs to: 2022.cerrofelado.finance@firenet.gov
HMGB (3CH)	Ben Thayer	208-830-1636	DECK (Santa Fe)		163.100	
Santa Fe Dispatch - Aircraft	Tessa	505-438-5600	AIRGUARD (emergency only)		168.6250 TX Tone110.9	

9.HELICOPTERS

FAA N#	T Y	MAKE/ MODEL	BASE	AVAIL	START	REMARKS	FAA N#	T Y	MAKE/ MODEL	BASE	AVAIL	START	REMARKS
7HE	3	AS350B3	TA49	0800	0830	Not Assigned Forest IA Ship	Guard (Lobo 29)	1	UH60	Santa Fe (SAF)	---	---	Bucket / ANG Base
473CH	1	CH-47D	Santa Fe (SAF)	0800	0830	Bucket	Guard (Lobo 31)	1	UH60	Santa Fe (SAF)	0800	0830	Bucket / ANG Base
Guard (Lobo 18)	1	UH60	Santa Fe (SAF)	0800	0830	Bucket / ANG Base							

CERRO PELADO FIRE LIAISON CONTACT INFORMATION

Paul Stevens – LOFR (Lead) 252-216-6316 npsobxranger@yahoo.com
Stephanie Allison – LOFR(t) 662-763-8374 stephanie.allison@usda.gov
Rhea Whalen – LOFR(t) 843-412-3571 rhea.whalen@usda.gov



FIRE INFORMATION

<https://inciweb.nwcg.gov/incident/8075/>

<https://www.facebook.com/2022.cerropeladofire>

<https://twitter.com/SantaFeNF>

Phone-505-312-4593

We are looking for pictures of the Fire especially those of firefighters and equipment in action, structure protection and scenic shots of the fire. Please mail to 2022.CerroPelado@firenet.gov



USFS Chief's 2022 Wildfire Letter of Intent



Human Resource Message
Cerro Pelado Fire
May 1, 2022

The Ten Commandments of Human Relations

1. SPEAK TO PEOPLE. There is nothing so nice as a cheerful word of greeting.
2. SMILE AT PEOPLE. It takes 72 muscles to frown and only 14 to smile.
3. CALL PEOPLE BY NAME. The sweetest music to anyone's ears is the sound of his/her own name.
4. BE FRIENDLY AND HELPFUL. If you have friends, be a friend.
5. BE CORDIAL. Speak and act as though everything you do is a genuine pleasure.
6. BE GENUINELY INTERESTED IN PEOPLE. You can like almost everybody if you try.
7. BE GENEROUS WITH PRAISE. Cautious with criticism.
8. BE CONSIDERATE WITH THE FEELINGS OF OTHERS. There are usually three sides to every controversy: yours, the other fellow's, and the correct side.
9. BE ALERT TO GIVE SERVICE. What counts most in life is what we do for others.
10. ADD TO THIS A GOOD SENSE OF HUMOR...a big dose of patience, a dash of humility and you will be rewarded many fold.

Apologizing
doesn't always
mean you're
wrong and the
other person is
right. It means
you *value* your
relationship *more*
than your ego.

**When you know who you are;
when your mission is clear
and you
burn with the inner fire of
unbreakable will;
no cold can touch your heart;
no deluge can dampen your
purpose.
You know that you are alive.
-Chief Seattle-**

**Janine Summy, Human Resource Specialist, 509-429-1206
HRSPSummy@gmail.com**

CERRO PELADO FIRE

Finance

*****PLEASE NOTE*****

If you worked on FREELOVE FIRE

NMVCP-000055, PPPLF2 (1522)

Please **e-mail** all documents that pertain to your assignment to the Cerro Pelado inbox.

2022.cerropelado.finance@firenet.gov

Use the following format on the email subject line:

(Example: TIME/O-200/SBear/Safety)

Contact Finance Section at 720-527-2533

Required Financial Documents:

Agency Overhead	Agency ADs / EFFs	VIPR Resources	Contract / Agency Crews	Cooperators
Resource Order Signed CTRs	Resource Order Casual Hire Form Signed CTRs	Resource Order VIPR Agreement Schedule of Items Inspections Signed STs	Resource Order Manifest Agreement / Contract Schedule of Items Inspections Signed CTRs	Resource Order Agreement Signed STs /CTRs



Training Specialist Cerro Pelado

The Training Specialist is working remotely. Training Specialist contact information for the Cerro Pelado Fire is:

- Robert Rivelle
- Most important; If any Trainee or Trainer has any questions or concerns, call/text: 707.498.1761 **anytime**.
- Email: robert_rivelle@nps.gov

How to register as a Trainee:

1. Use the QR code below to register. If you're unable to register using the QR code, please call 707.498.1761 anytime.
2. Once registered, you will receive text and email updates.

How to close-out your training assignment:

1. **Trainer:** Complete and Evaluation Record in the back of the Position Task Book and make as many entries as possible within the individual tasks. Discuss this with your Trainee.
2. **Trainer:** Complete an individual performance rating (ICS 225) and go over the performance rating with your Trainee.
3. **Trainee:** Text a photo or email your individual performance rating (ICS 225) to the Training Specialist.
4. **Trainee:** Complete the Trainee exit questions at the QR code below.
5. **Trainee:** Once 1-4 are completed, the Trainee and the Training Specialist will have a brief conversation to discuss the Task Book and assignment with the Trainee.
6. **Done**, except for safe travels home!

Trainee Registration



Trainee Exit Questions



Cerro Pelado Fire Demob Unit

Demob Day Approaching?

DEMOB HOURS OF OPERATION: 0730 -2200

720-584-9090 or email:

2022.cerropelado.demob@firenet.gov

1. Ensure that your supervisor has released you from the incident at least 24 hours in advance.
2. Contact FINANCE 24 hours prior to give them a heads-up you are departing: Phone: 720-527-2533
3. Turn in any outstanding CTRs/Shift Tickets. Make sure they are SIGNED.
4. Confirm there is no missing financial documentation. (See Finance Page for full information)

Need Air Travel to get Home?

**IF YOUR RETURN METHOD OF TRAVEL IS BY AIR,
CONTACT DMOB AT LEAST 72-HOURS BEFORE DEMOB DAY**

**Email: Include Gender, Name EXACTLY as it appears on your drivers license, Date of Birth, Departure & Final Destination Airport, city for Rental Car Return, your email and phone number
to: 2022.cerropelado.demob@firenet.gov**

AIR TRAVEL PHONE: 720-584-9090

Cerro Pelado Demob Instructions

On your Demob Day

STEP 1

Ensure that your supervisor has released you from the incident at least 24 hours in advance.

STEP 2

SUPPLY – Return gear and supplies.

- If nothing to turn in, contact supply to clear you.

GROUND SUPPORT – Return pool NERV rentals, receive an inspection, etc.

- Be sure to get inspected.

COMMUNICATIONS – Return communications equipment

STEP 3

FINANCE – To finalize your finance paperwork, do the following:

- **Please call 720-527-2533 to initiate your final OF-288 or OF-286.**
 - **Virtual Demob, please email your final CTR/ST noting Final CTR/ST in the subject line of the email, please include your cell phone number. Cerro Pelado Finance email 2022.cerropelado.finance@firenet.gov**
 - **In-Person Demob: If you are unable to do a virtual demob, please arrange for an in person demob at the ICP. *Please keep your hard copy CTRs/STs to be turned in in-person.***

You need your final, signed OF-288 Time Report or OF-286 Invoice BEFORE starting travel.

STEP 4

Contact DMOB at 720-584-9090 and DMOB will verify that you have completed check- out. Be prepared to talk about your actual departure date and time, your anticipated arrival date and time, and where you will be staying if travel includes overnight stops away from fire camp.

You must complete all four steps to be released in IROC.

Logistics

Ordering Process

Orders should be sent to the below ORDM's by 1300 for Cache Orders. For all other orders please have orders to ORDM's by 0800 hours or 1500 hours. Orders should be routed as shown below:

Chad_wilberger@firenet.gov

Logistics:	Sally Browning sbrowning50@gmail.com Jane Artega 530-957-3558
Facilities Unit Contact:	Base Camp: Jimmy Rickard 706-308-2015 ICP: Susanne Adams 715-783-0291
Ground Support:	Jay Aron 401-316-8730
Supply Unit	Tom Piper 727-514-5513
Medical Unit	Fred Adler 479-238-6064 or Nick Arnett 408-888-1900
Security Manager:	Karen Bradford 423-851-4206
Food Unit	Clyde Leggins 828-334-2340
Communications	Barry Stearns 954-553-6544

Fuel Truck Hours 0630 to 0900 and 1800 to 2100

Fuel Tender will be located at the Banco Bonito Staging area on Friday morning and evening, as well as Saturday morning. Fueling will begin at base camp starting Saturday evening.

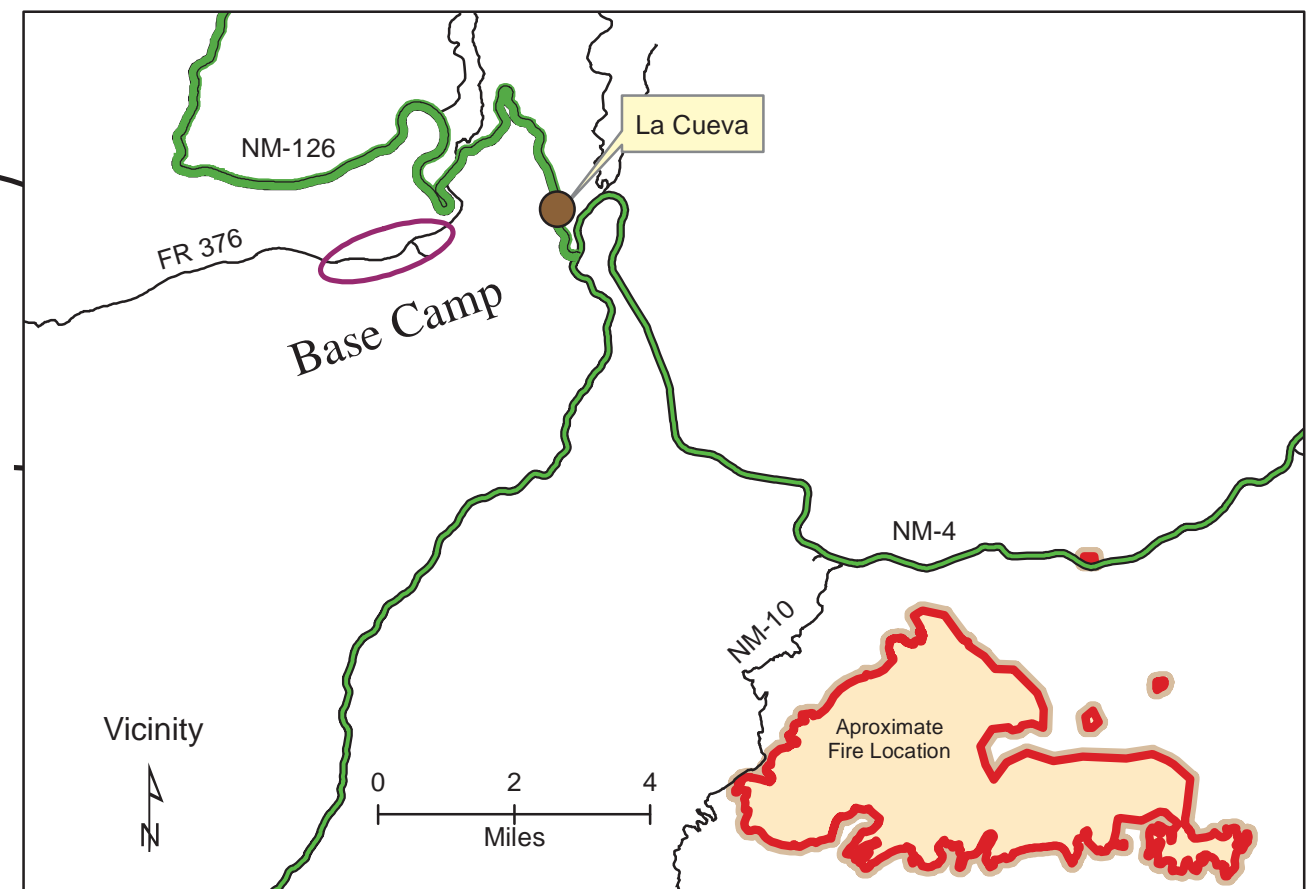
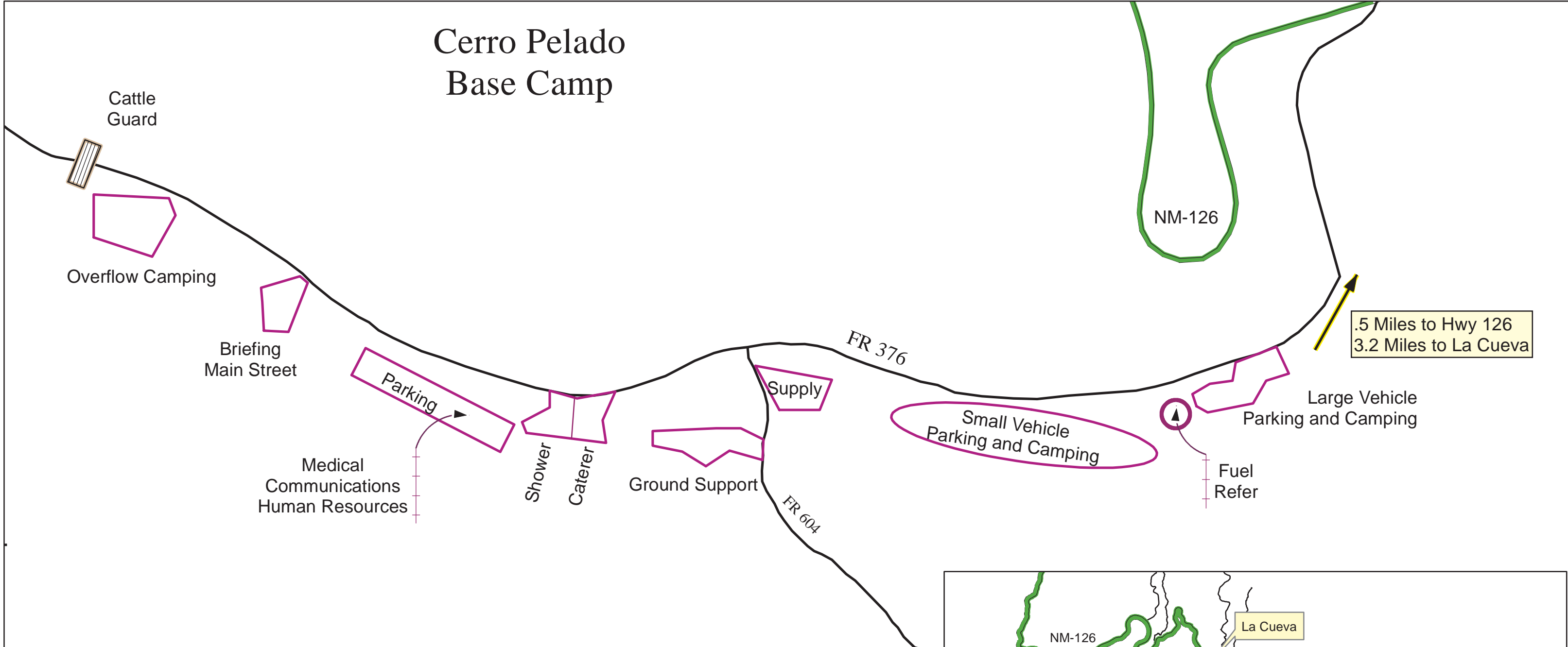
Showers are located at the Base Camp located on Forest Service Road 376 (mile marker 35).

Shower Hours: 0600 to 1200 and 1400 to 2200

All resources will return to their designated room reservation area for Friday night. Resources should pack all belongings and check out of rooms on Saturday morning. All resources will report to Base Camp for camping accommodations after shift on Saturday.

Dinner will be served at the Hummingbird Music Camp on Thursday and Friday. Breakfast and Lunches will be available at the same location Friday and Saturday morning. Saturday's dinner will be at the Base Camp on FS Road 376.

Cerro Pelado Base Camp



0 500 1,000 Feet

0 0.125 0.25 0.5 Miles

IAP

Cerro Pelado
NM-SNF-000049
5/01/22 Day

15,650 acres at 04/30 0230

Air Operations

- Dip Site
- Helispot
- Helibase

Assignment Breaks

- Division Break

Logistics

- Drop Point

Operations

- Lookout

Fire

- Hot Spot - Spot Fire

Reference

- Value at Risk
- Other
- Gate
- Fire Station

Repair

- Resource Location

Communications

- Internet Access
- Repeater

Safety

- Hazard

Water

- Water Source

Ops Completed

- Completed Dozer Line
- Completed Hand Line
- Completed Road as Line

Ops Planned

- Planned Hand Line
- Planned Mixed Construction Line
- Planned Road as Line

Reference

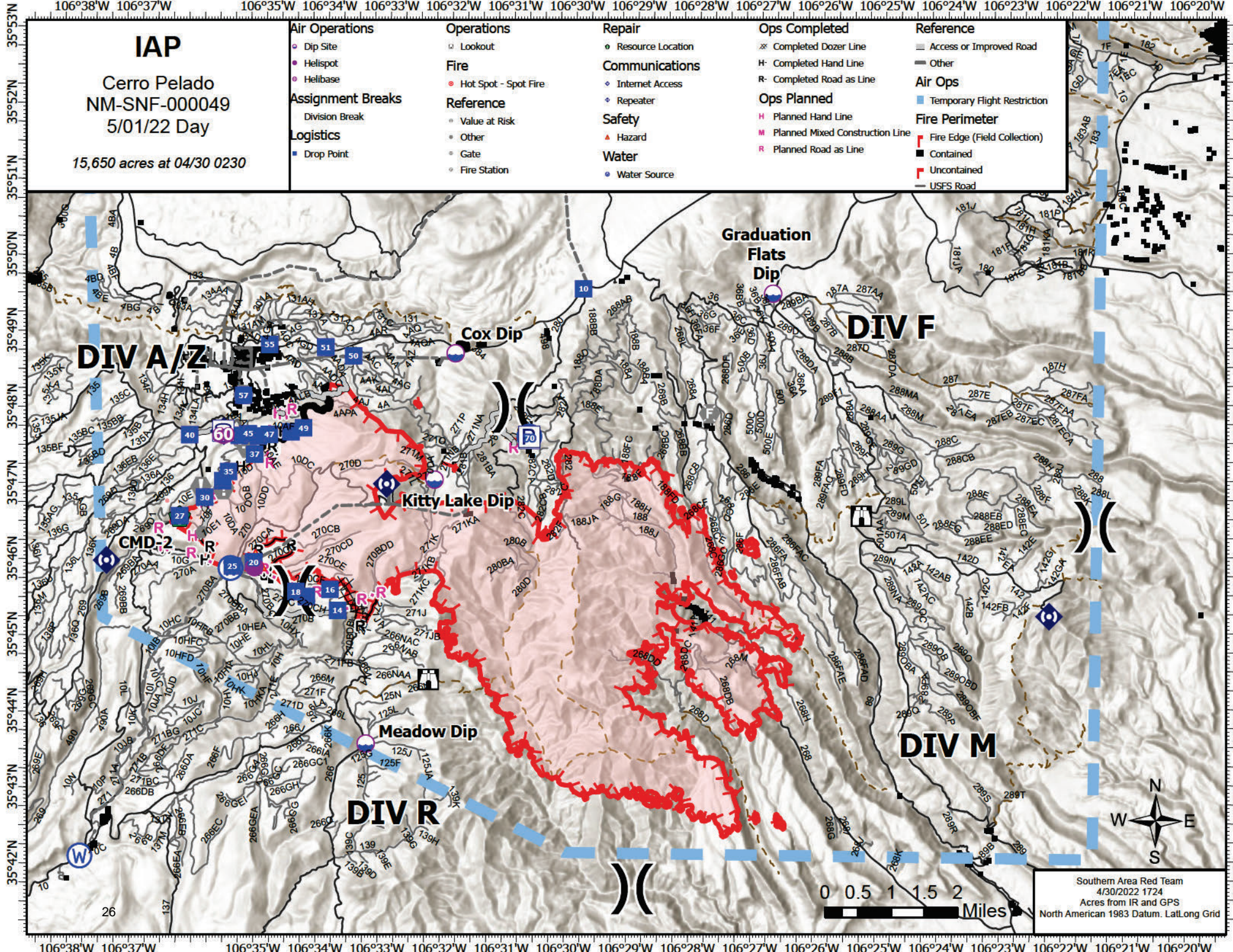
- Access or Improved Road
- Other

Air Ops

- Temporary Flight Restriction

Fire Perimeter

- Fire Edge (Field Collection)
- Contained
- Uncontained
- USFS Road



Southern Area Red Team
4/30/2022 1724
Acres from IR and GPS
North American 1983 Datum. LatLong Grid

UNIT LOG	1. Incident Name	2. Date Prepared	3. Time Prepared
	4. Unit Name/Designators	5. Unit Leader (Name and Position)	6. Operational Period
7. Personnel Roster Assigned			
Name	ICS Position	Home Base	
8. Activity Log			
Time	Major Events		
9. Prepared by (Name and Position)			

MEDICAL PLAN (ICS 206 WF)

Controlled Unclassified Information//Basic

1. Incident/Project Name				2. Operational Period				
Cerro Pelado Fire				05/1-2/2022 0700-1900				
2. Medical Aid Stations								
Medical Aid Stations		Location			Advanced Life Support (ALS)			
					Yes		No	
ERL Medical Trailer		Base Camp						
3. Ambulance Services								
For local 911 resources, call Sandoval County Dispatch (505) 896-7300								
Name		Location		Phone		Advanced Life Support (ALS)		
						Yes No		
MED 30 (4WD)		Division A		Cerro Communications		X		
Ambulance 1 (24-hr)		Division Z, DP-25		Cerro Communications		X		
Ambulance 2		Division A DP-40		Cerro Communications		X		
Jemez Pueblo Ambulance Service		4535 NM 4, Jemez Pueblo, NM		Sandoval Cty (above)		X		
MED 31		550 Zia Pueblo Road, NM		Sandoval Cty (above)		X		
4. Air Ambulance Services								
Sandoval County Dispatch (505) 896-7300 Air Ambulance A/G Frequency VMed28 155.34 Tx Tone 156.7								
Name		Location			Advanced Life Support (ALS)			
					Yes		No	
Classic Air Medical		Los Alamos – Night Vision			X			
Tri-State Care Flight		Santa Fe – Night Vision			X			
UNM Lifeguard		Albuquerque – Night Vision			X			
Bernalillo County Sheriff 505-798-7000		A-Star: Day short haul, 24-hour extrication/relocation			X			
5. Hospitals								
Name/Address	GPS Datum – WGS 84 Coordinate Standard		Travel Time Air Gnd		Phone	Helipad Yes No		Level of Care Facility
Los Alamos Medical Center 3917 West Road Los Alamos, NM	Lat:	35 52.91' N		30 min	40 min	(505) 231-2602 Supv (505) 662-4201	X	Level 3 Trauma
	Long:	106 19.13' W						
	VHF:							
University of New Mexico 2211 Lomas Blvd. NE Albuquerque, NM	Lat:	35 05.27' N		30 min	2 hrs	(505) 272-2111	X	Level 1 Trauma Burn Stabilization
	Long:	106 37.11' W						
	VHF:							
Christus St. Vincent Medical Center 455 St. Michael's Drive Santa Fe NM	Lat:	35 39.56' N		30 min	2 hrs	(505) 913-3361	X	Level 3 Trauma
	Long:	105 56.73' W						
	VHF:							
University of Colorado 12605 E. 16th Avenue, 3rd floor, Aurora, CO	Lat:	39 44.56' N		3.5 hrs	7 hrs	(844) 285-4555	X	Burn Center
	Long:	104 50.52' W						
	VHF:							
6. Clinics								
Trinity Urgent Care 1460 Trinity Dr Los Alamos, NM		Open 0900-1845 Every Day (505) 412-6033						

IWI IC Responsibilities:

- Take charge of the scene – inform the Division Supervisor and Communications that you are the IWI IC and establish radio communications (frequencies, channels). Identify the emergency name – Division A medical, etc.
- Assign or begin patient assessment (Medical Incident Report - MIR) and first aid. Request additional medical resources on division/branch or across incident. Transmit MIR patient information to Communications.
- Determine patient transportation through consultation with line medical personnel and Medical Unit Leader. Consider transportation time, risk to personnel, destination facility and available operational resources. If air transport is chosen, implement the plan for alternative transportation in the event aircraft cannot complete the mission. Order transportation resources through Communications as early as possible.
- Notify Communications as resources arrive and any patient status changes. Names of injured or deceased individuals will not be transmitted on the radio.
- Initiate documentation for future investigation; if a line safety officer is available, assign them to lead documentation. Do not move deceased individuals, gear or personal effects except to accomplish rescue work or protect the safety of others. Obtain written documentation of witnesses. The Unit Log, ICS 214, may be used for the initial documentation, but a subsequent narrative will be required.
- As appropriate, conduct an After-Action Review to determine successes, areas to improve and lessons learned.

MEDICAL PLAN (ICS 206 WF)

Controlled Unclassified Information//Basic

7. Division Branch Group	Area Location Capability		
Div A/Z	EMS Responders & Capability:	Med 30 Ambulance (ALS) Dispatch 877-261-4090 Ambulance 1 (ERL) DP-25 William Boyd 720-660-7786 Medic Team 2 (ALS) - Dean Carpenter 708-979-6976	
	ETA for Ambulance to Scene:	Air: 40 min. Ground: 30 min.	
Div F	EMS Responders & Capability:	REMS 2 (ALS) Cochiti Fire Station - Rick Bostian 479-422-0462 Ambulance 2 (ALS) DP-60 Arnoldo Rivera 520-431-1611 Medic Team 1 (ALS) - Cody Keller 404-966-3146	
	ETA for Ambulance to Scene:	Air: 40 min. Ground: 30 min.	
Div M	EMS Responders & Capability:	<i>None assigned.</i>	
	ETA for Ambulance to Scene:	Air: 40 min. Ground: Inaccessible (use REMS)	
Div R	EMS Responders & Capability:	REMS-1 (ALS) DP-14 Tanner Smith 541-556-9045	
	ETA for Ambulance to Scene:	Air: 40 min. Ground: 30 min.	
Structure	EMS Responders & Capability:	<i>None assigned.</i>	
	ETA for Ambulance to Scene:	Air: 40 min. Ground: 30 min.	
Night Ops	EMS Responders & Capability:	Ambulance 1 (ERL) DP-25 Sage Stewart 479-806-0860 Med Team 3 (ALS) - Jeff Molen 318-751-1087	
	ETA for Ambulance to Scene:	Air: 40 min. Ground: 1 hr.	
ICP	EMS Responders & Capability:	Fred Adler (EMT), Nick Arnett (EMTF)	
	Equipment Available on Scene:	BLS	
	Medical Emergency #:	(479) 238-6064 or (408) 888-1900	
	ETA for Ambulance to Scene:	Air: 20 min. Ground: 30 min.	
Base Camp	EMS Responders & Capability:	Medical Trailer	
	Equipment Available on Scene:	ALS	
	ETA for Ambulance to Scene:	Air: 35 min. Ground: 45 min.	
8. Prepared By (Medical Unit Leader)		9. Date/Time	10. Reviewed by (Safety Officer)
Fred Adler, MEDL Nick Arnett, MEDL(t)		4/30/2022 1700	Tony Rivers, SOFR 4/30/2022 1700

MEDICAL PLAN (ICS 206 WF)

Controlled Unclassified Information//Basic

Medical Incident Report

FOR A NON-EMERGENCY INCIDENT, WORK THROUGH CHAIN OF COMMAND TO REPORT AND TRANSPORT INJURED PERSONNEL AS NECESSARY.

FOR A MEDICAL EMERGENCY: IDENTIFY ON SCENE INCIDENT COMMANDER BY NAME AND POSITION AND ANNOUNCE "MEDICAL EMERGENCY" TO INITIATE RESPONSE FROM IMT COMMUNICATIONS/DISPATCH.

Use the following items to communicate situation to communications/dispatch.

1. CONTACT COMMUNICATIONS / DISPATCH (Verify correct frequency prior to starting report)

Ex: "Communications, Div. Alpha. Stand-by for Emergency Traffic."

2. INCIDENT STATUS: Provide incident summary (including number of patients) and command structure.

Ex: "Communications, I have a Red priority patient, unconscious, struck by a falling tree. Requesting air ambulance to Forest Road 1 at (Lat./Long.) This will be the Trout Meadow Medical, IC is TFLD Jones. EMT Smith is providing medical care."

Severity of Emergency / Transport Priority	<input type="checkbox"/> RED / PRIORITY 1 Life or limb threatening injury or illness. Evacuation need is IMMEDIATE <i>Ex: Unconscious, difficulty breathing, bleeding severely, 2^o – 3^o burns more than 4 palm sizes, heat stroke, disoriented.</i> <input type="checkbox"/> YELLOW / PRIORITY 2 Serious Injury or illness. Evacuation may be DELAYED if necessary. <i>Ex: Significant trauma, unable to walk, 2^o – 3^o burns not more than 1-3 palm sizes.</i> <input type="checkbox"/> GREEN / PRIORITY 3 Minor Injury or illness. Non-Emergency transport <i>Ex: Sprains, strains, minor heat-related illness.</i>	
Nature of Injury or Illness & Mechanism of Injury		<i>Brief Summary of Injury or Illness (Ex: Unconscious, Struck by Falling Tree)</i>
Transport Request		<i>Air Ambulance / Short Haul/Hoist Ground Ambulance / Other</i>
Patient Location		<i>Descriptive Location & Lat. / Long. (WGS84)</i>
Incident Name		<i>Geographic Name + "Medical" (Ex: Trout Meadow Medical)</i>
On-Scene Incident Commander		<i>Name of on-scene IC of Incident within an Incident (Ex: TFLD Jones)</i>
Patient Care		<i>Name of Care Provider (Ex: EMT Smith)</i>

3. INITIAL PATIENT ASSESSMENT: Complete this section for each patient as applicable (start with the most severe patient)

Patient Assessment: See IRPG page 106

Treatment:

4. TRANSPORT PLAN:

Evacuation Location (if different): (Descriptive Location (drop point, intersection, etc.) or Lat. / Long.) Patient's ETA to Evacuation Location:

Helispot / Extraction Site Size and Hazards:

5. ADDITIONAL RESOURCES / EQUIPMENT NEEDS:

Example: Paramedic/EMT, Crews, Immobilization Devices, AED, Oxygen, Trauma Bag, IV/Fluid(s), Splints, Rope rescue, Wheeled litter, HAZMAT, Extrication

6. COMMUNICATIONS: Identify State Air/Ground EMS Frequencies and Hospital Contacts as applicable

Function	Channel Name/Number	Receive (RX)	Tone/NAC *	Transmit (TX)	Tone/NAC *
COMMAND					
AIR-TO-GRND					
TACTICAL					

7. CONTINGENCY: Considerations: If primary options fail, what actions can be implemented in conjunction with primary evacuation method? Be thinking ahead.

8. ADDITIONAL INFORMATION: Updates/Changes, etc.

REMEMBER: Confirm ETA's of resources ordered. Act according to your level of training. Be Alert. Keep Calm. Think Clearly. Act Decisively.