



Cerro Pelado

NM-SNF-000049, P3PK47 (0310)

**Operational Period:
Monday, May 2, 2022
0700 – May 3, 2022 0700**

Check - In



Avenza Maps



IAP


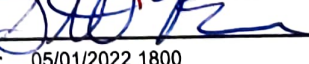


Cerro Pelado Communication Phone
561-527-0804



**SA Red Team
Incident Commander – Steve Parrish**

INCIDENT OBJECTIVES (ICS 202)

1. Incident Name:		2. Operational Period: 0700 - 0700	
CERRO PELADO		Date/Time From: 05/02/2022 0700 MON	Date/Time To: 05/03/2022 0700 TUE
3. Objective(s):			
Management Objectives			
<p>1) Protection of human life and safety is the first priority for all actions taken on a wildfire and can overrule all other strategic/management objectives and incident requirements.</p> <p>2) Base management decisions on meeting objectives while also minimizing the risk of COVID-19 exposures to responders and the public. COVID-19 considerations may alter how you meet goals but should not lead to higher risk tactics.</p> <p>3) Maintain and strengthen relationships with the Santa Fe National Forest, private landowners, the public, cooperators and partners by providing timely and accurate information.</p> <p>4) Protect the unique attributes of impacted watersheds through actions that minimize sedimentation and invasive species movement.</p> <p>5) Protect impact to cultural resources through consultation with local forest specialists.</p>			
Control Objectives			
<p>1) Protection of human life and safety is the first priority for all actions taken and shall override all other incident control objectives. Evaluate risk vs. benefit in strategic and tactical planning and only commit operational resources to actions that have the highest probability of success.</p> <p>2) Keep fire out of Jemez Canyon.</p> <p>3) Keep fire south of the community SLP and south of state route 4; keep fire west of forest road 289, and Tent Rock Ranch Rd.; keep fire north of Bear Spring Rd; keep fire east of forest road 266 and 271; keep fire north of forest road 270.</p> <p>4) Minimize retardant impacts to Jemez Natural Recreation Area.</p> <p>5) Protect values at risk in the Valles Caldera National Preserve including watersheds, visitor and administrative infrastructure, historic structures, cultural resources, and important wildlife habitats.</p> <p>6) Provide initial attack resources to respond to any new ignitions within the TFR area to limit potential size and growth.</p>			
4. Operational Period Command Emphasis:			
<p>Stop, Think, Discuss then Act, and ensure LCES is in place prior to engaging the fire or Initial Response fire.</p> <p>The Cerro Pelado fire receives a strategic, risk-based response, commensurate with the threats and opportunities, and uses the full spectrum of management actions, that consider fire and fuel conditions, weather, values at risk, and resources available.</p>			
General Situational Awareness:			
<ul style="list-style-type: none"> • Continued low RHs • No predicted precipitation for several days 			
WEATHER DISCUSSION: Unusually early start to fire season. Critical to extreme fire weather for the next several days. Entire area is experiencing extended drought. Please see daily weather forecast for detailed report.			
7. Prepared by: MARG OLSON		Position/Title: PLANNING SECTION CHIEF	
8. Approved by Incident Commander:		Name: STEVE PARRISH	
ICS 202		IAP Page	
		Signature: 	
		Signature: 	
		Date/Time: 05/01/2022 1800	

ORGANIZATION ASSIGNMENT LIST (ICS 203)

1. Incident Name:		2. Operational Period: 0700 - 0700	
CERRO PELADO		Date/Time From: 05/02/2022 0700 MON	Date/Time To: 05/03/2022 0700 TUE
3. Incident Commander(s) and Command Staff:		READ	SILVA, ANDRE; PITTENGER, DAVE; BAISDEN, BECKY; THOMPSON, LISA
IC/UC	PARRISH, STEVE G	6. Logistics Section:	
DEPUTY	PEARSON, PAT	CHIEF	BROWNING, SALLY; ARTEAGA, JANE
SAFETY OFFICER	RIVERS, TONY; HAWKINS, TOMMY; LIDDELL, BRAD; STONE, DAVID	SUPPLY UNIT	PIPER, TOM
INFORMATION OFFICER	HIBBARD, CATHERINE; AURIEMMO, LESLIE; STRAWSER, BONNIE (VIRTUAL); ENGLE, JASON (T)	FACILITIES UNIT	ADAMS, SUSANNE; RICKARD, JAMES (T)
LIAISON OFFICER	STEVENS, PAUL; ALLISON, STEPHANIE (T); WHALEN, RHEA (T)	GROUND SUPPORT UNIT	JOHNSON, ROBERT KAUTT, JON
4. Agency/Organization Representative(s):		COMMUNICATIONS UNIT	STEARNS, BARRY; REGAN, RON; RADZIVILL, DAVID (T)
Agency/Organization	Name	MEDICAL UNIT	ADLER, FRED; ARNETT, NICK
USFS SANTA FE	CRESS, DEBBIE; MARSHALL, JEREMY; ELMORE, LANCE (FMO); YEN, LESLEY	SECURITY UNIT	BRADFORD, KAREN L; FAGERMAN, DAVIN
NEW MEXICO FORESTRY DIVISION	CRANE, LAWRENCE	FOOD UNIT	LEGGINS, CLYDE NAUMANN, JEFF
NPS VALLES CALDERA	SILVA-BANUELOS, JORGE	7. Operations Section:	
NPS BANDELIER	RODGERS, MARLA; THIVENER, JASON	OPS SECTION CHIEF	MYERS, PETER; DAVIS, MIKE; RAMSAY, JOHN (T)
TRIBAL LIAISON	MONTES, REUBEN	PLANNING OPS	EDGE, VICKI; COOK, CHAD (T)
LOS ALAMOS NATIONAL LABORATORY	NIETO, RICH	Branch I	
IARR FEDERAL RESOURCES NM AND AZ	GIBBS, PAUL	BRANCH DIRECTOR	MORTON, HEATH
5. Planning Section:		DIVISION/GROUP	F BURGETT, JOEL; MCKINNON, BLAINE (T)
CHIEF	FORDER, MISSY; OLSON, MARG	DIVISION/GROUP	M WARD, MIKE D
RESOURCES UNIT	PHILLIPS, BRITTANY B; AUBUCHON, RICH; SOBIESKI, SUE (VIRTUAL) (T)	DIVISION/GROUP	A/Z PASCARELLA, ANDY
SITUATION UNIT	KETT, SUSAN R ROBERTSON, ETHAN	DIVISION/GROUP	R ALVES, FRANK; HELFENSTIEN, LUKE (T)
DEMOBILIZATION UNIT	THOMAS, DONNA L	DIVISION/GROUP	STRUCTURE ROBERTSON, CRAIG
FIRE BEHAVIOR ANALYST	COONS, ALISON;	DIVISION/GROUP	IA SCHROEDER, KRIS
HUMAN RESOURCE SPECIALIST	SUMMY, JANINE	Branch II	
TRAINING SPECIALIST	RIVELLE, RICHARD	BRANCH DIRECTOR	TAYLOR, CORDELL
GIS SPECIALIST	BARNES, TOMMY M; KIRSCH, ANDY; SHELLEY, MICHAEL; GATES, KATHERINE ELIZABETH (T)	DIVISION/GROUP	NIGHT EDWARDS, AARON
TECHNOLOGY SUPPORT SPECIALIST	FARMER, TONY; PADDOCK, BRIAN; WEBB, KELLY (T)	7b. Air Operations Branch:	
INCIDENT METEOROLOGIST	STEARNS, SCOTT	AIR OPS BRANCH DIRECTOR	HOWARD, LYNN
DOC. UNIT	KOSIOROWSKI, JOEY (VIRTUAL)	AIR SUPPORT SUPERVISOR	MASON, JOHN
9. Prepared By:		HELIBASE MANAGER	KLEISEN, BRIAN
Name:	MARG OLSON	8. Finance/Administration Section:	
Position/Title:	PLANNING SECTION CHIEF	CHIEF	MEREDITH, JAMES M; WARNER, JOHN
Signature:		TIME UNIT	WINKLER, KIMBERLY
ICS 203	IAP Page	PROCUREMENT UNIT	PELCH, GEMAA
		COMPENSATION UNIT	LOWDER, DIANE
		COST UNIT	TRAVIS, DIANE
		Date/Time:	05/01/2022 1800



To: All Incident Personnel, Cerro Pelado Fire

As Southern Area National Type I Incident Commander, I am committed to a policy of “zero tolerance” of inappropriate behavior during incident operations. Any form of harassment, discriminatory practices, or disrespectful behavior will not be tolerated. Known or reported acts will be dealt with appropriately.

I am particularly concerned about the perception that alcohol has a place in any of the Incident facilities. It is not appropriate to indulge in alcoholic beverages during any fire assignment.

The National Team from the Southern Region has a policy of “NO ALCOHOL” from the time of dispatch until the time of physical release from the Incident. Members of the Team voluntarily comply with this policy; all incident personnel will be expected to do so also.

We endorse, support, and expect an attitude of mutual respect for all Incident personnel and the public we serve. We also, endorse the attitude and work ethic that places “Safety First, every time on every Incident.” We expect nothing less.

/s/Steve Parrish

Incident Commander

SAIMT 1



INCIDENT Weather Forecast



Forecast No: 9
Prediction For: Monday
Shift Date: May 02, 2022
Forecast Issued: May 01, 2022 at 1800

Name of Incident: Cerro Pelado Fire
Unit: Santa Fe NF
Incident Meteorologist: Scott Stearns
 (208) 577-1617

Discussion: Cooler and more stable conditions are expected today in the wake of yesterday's cold front. Expect winds out of the west to be slower than yesterday. Tuesday is on track to turn out similarly to yesterday, presenting near-critical fire weather conditions thanks to gusty southwest winds ahead of yet another stronger cold front. The good news is that overnight RH recoveries should be slightly higher behind this front.

Forecast for Today:

Sky/Weather:

Sunny

Jemez Springs 8,000'

Cerro Pelado Pk 9,400'

Max Temperature:	66			60	°F
Min RH:	12			14	%
Wind (20 FT):	Inversion breaking around 0900.				
...	W	12		W	14 mph
...	Gusts:	20		Gusts:	25 mph
Haines Index:	5			5	
LAL:	1			1	
Chance of Precipitation:	0			0	%
Tonight's Min Temperature:	40			33	°F
Tonight's Max RH:	35			40	%
Tonight's Wind (20 FT):	Moderate inversion setting in around 2000.				
...	W	13		W	13 mph
...	Gusts:	20		Gusts:	23 mph
Tonight's Haines Index:	5			5	
Tonight's LAL:	1			1	
Tonight's Chnc of Precip:	0			0	%

Forecast for Tuesday:

Fire Weather Watch for gusty winds and low RHs

Sky/Weather:

Sunny with increasing clouds in the evening

Jemez Springs 8,000'

Cerro Pelado Pk 9,400'

Max / Min Temperature:	73	36		66	28	°F
Min / Max RH:	10	35		12	40	%
Wind (20 FT):	Inversion breaking between 0900 and 1000.					
...	SW	18		SW	20	mph
...	Gusts:	30		Gusts:	35	mph
Haines Index:	6		LAL:	1	Precip Chance:	0



Extended Outlook:

Recent models have increased overnight RH recoveries slightly, but otherwise the forecast remains dry. A broad ridge of high pressure will move into the region Thursday or Friday leading to some of the warmest temperatures yet experienced on this fire.

		<u>Max T</u>	<u>Min T</u>	<u>Min RH</u>	<u>Max RH</u>	<u>Ridge Winds @ 1500</u>	<u>Weather</u>
8,600'	Wed:	58	32	14	45	W @ 17 G28	
	Thu:	66	37	13	35	W @ 8 G18	
	Fri:	74	43	9	30	W @ 9 G20	

If you have weather observations, please provide them to the IMET / FBAN.

FIRE BEHAVIOR FORECAST

FORECAST NUMBER: 09	TYPE OF FIRE: Wildland, Type 1	
FIRE NAME: Cerro Pelado	OPERATIONAL PERIOD: Day Shift	
DATE ISSUED: 5/1/22 TIME ISSUED: 1800	SHIFT DATE: Monday May 2, 2022	
UNIT: Santa Fe NF	SIGNED: Alison Coons, FBAN	
WEATHER SUMMARY:	Fire Environment & Danger Information	
Local Thresholds – Watch Outs Min RH 8%, Winds 8 Gusts to 20 mph, Temp>70, Heavy Fuels <9%		
Today's Significant Fire Weather: Low Relative Humidity and Haines Index of 5.	SNF West Pocket Card	SWCC Fire Danger Page

FIRE BEHAVIOR:

GENERAL:

Moderate winds and Haines index of 5 will create conditions for active fire growth and intensity, particularly where winds, slope and drainages align. Potential for very active fire behavior is expected today on the east and north sides of the fire. Torching possible with long range spotting likely.

Current Fire Environment Conditions:

Fine Dead Fuel Moisture = 5%, 1,000 Hour Fuel Moisture = 8-10%, Live Shrub Moisture = <82%
ERC's remain around the 90th percentile @ Jemez RAWs, but above the 97th percentile value for this date.

Fire Behavior based on MAXIMUM values for the fuel models shown, exposed fuels on steep slope.

Fuel Model	Rate of Spread	Flame Length
Slash w/ Grass/Shrub	8-24 chains/hour	3-12 feet Head Fire 1-3 feet Backing Fire
Timber	5-14 chains/hour	7-12 feet

There is potential for spotting distances of .25 to 0.4 miles
Probability of Ignition = 72%

Specific Areas of Concern:

Alpha and Zulu– Continuation of west winds will support operations by pushing heat interior across most of the division.

On the north side of the division, south of Hwy 4, expect the fire to continue to back toward the highway.

Romeo and Mike: Fire is expected to continue moving to the east and south toward Oaks Mesa with increased activity where wind and fuels align. Continued burning of heavy pockets of unburned fuels may exhibit very active burning, specifically in the conifer stringers. The fire should hang up when it reaches the rock washes above Pueblo of Cochiti, but continue to move through stringers of mixed conifer in the canyon bottoms.

Fox Trot: West winds may continue to move the fire eastward toward the Los Alamos National Laboratory. If the fire crosses Highway 4, expect high spread rates in the Valles Caldera due to heavy grass loading.

AIR OPERATIONS:

Aviation resources should be able to fly all day with only “moderate” winds predicted. Smoke production at times may cause limited visibility over the eastern portion of the incident.

SAFETY:

Reassess your situation and mitigate hazards if you have any doubts about your escape routes or safety zones or if the situation becomes too complex.

Send any fire behavior on site weather observations or photos to: alisoncc66@gmail.com 606-260-0526



HEALTH AND SAFETY MESSAGE

“We don’t plan on luck to be safe, we plan on sound risk management and good decisions.....the Red Team

INCIDENT: Cerro Pelado Fire	DATE: Monday, May 2 nd , 2022
Major Hazards & Risks: Risk Management, Driving, Health Maintenance	
<p>Risk Management - (This is valid everyday – brief occasionally during the daily shift). Have you evaluated the hazards that are around? Have you thought about the consequences if something goes wrong? Is the risk you and your personnel are taking - worth the benefit? Have you briefed and discussed personnel on Risk Management? Have you reviewed the Medical Plan in case of a what if?</p> <p>Driving - Our driving distances from and to base camp and from base camp to the east side of the fire have increased due to the fire’s progression to the east. Make sure you are always adhering to all speed limits. Highway 4, FS Road 268, and FS Rd 289 are the main road systems we are utilizing currently. Each road offers many hazards and ones we should always be cautious of when we are driving on them.</p> <p>Health - Your personal health and wellness affect you and those around you. Biggest trend in the Medical Unit are feet and respiratory issues. Your feet are your Foundation - Take care of them. Maintain your hygiene - Wash hands frequently - Hand Washing is the single most effective measure to prevent the spread of respiratory issues, colds, coughs etc.</p>	

SLIPS

TRIPS

FALLS

Division/Group Assignment List (ICS 204 WF)
Controlled Unclassified Information//Basic

1. Incident Name:			3.			
CERRO PELADO			Branch:		Division/Group	
2. Operational Period: 0700 - 0700			I		A/Z	
Date/Time From: 05/02/2022 0700	MON	Date/Time To: 05/03/2022 0700				
4. Operations Personnel						
OPERATIONS CHIEF		P. MYERS, M. DAVIS V. EDGE, C, COOK (T), J. RAMSAY (T)		BRANCH DIRECTOR		HEATH MORTON
DIVISION/GROUP SUPERVISOR		ANDY PASCARELLA		SAFETY		TOMMY HAWKINS
5. Resources Assigned this Period						
Strike Team / Task Force / Resource Designator	LWD	Leader	Number Persons	Drop Off PT./Time	Pick Up PT./Time	
O-106 TFLD	05/10	CHRISTINE WEIR KOETTER	1	BASE CAMP/0700	BASE CAMP/1900	
C-17 HC2 DECANSO CREW 5	05/13	CINDY PETRICH	21	BASE CAMP/0700	BASE CAMP/1900	
E-130 ENG3 COCONINO	05/06	JOEL PRESMYK	5	BASE CAMP/0700	BASE CAMP/1900	
E-131 ENG3 SAN JUAN COUNTY	05/09	AARION AUSTIN	3	BASE CAMP/0700	BASE CAMP/1900	
E-129 ENG4 ENGINE 1441 NM-BLM	05/05	FORREST PETERMAN	3	BASE CAMP/0700	BASE CAMP/1900	
E-3 ENG4 ENGIN 304 SUNDANCE	05/07	PETER MUNRO	3	BASE CAMP/0700	BASE CAMP/1900	
E-2 ENG6 DEBEQUE	05/08	VOORHEES	2	BASE CAMP/0700	BASE CAMP/1900	
E-105 ENG6 RAMOS EAGLE	05/08	CORBIN LESTER	3	BASE CAMP/0700	BASE CAMP/1900	
E-114 WTT2 COWBOY	05/07	WYATT LACKMAN	2	BASE CAMP/0700	BASE CAMP/1900	
WTT2 TENDER 26 HEMEZ FIRE				BASE CAMP/0700	BASE CAMP/1900	
O-141 MED 2	05/09	DEAN CARPENTER	2	BASE CAMP/0700	BASE CAMP/1900	
E-59 AMBU	05/10	BILL BOYD	2	BASE CAMP/0700	BASE CAMP/1900	
6. Control Operations/Work Assignments:						
<p>Task: Continue to provide engine resource presence for the community SLP, and mop up control lines near SLP structures. Hold and mop up handline from the Community SLP to the 10 Q, 10 A, and 10 DB area towards DP 30. Mop up 50 feet along FS 10, FS 270, FS 270C, and handlines. Improve lines as needed.</p> <p>Purpose: To reduce the fire threat to the community SLP, and keep fire progression east of FS-10. Hold fire north of FS 270, FS 270 C network, and east of FS 10.</p> <p>End State: Lift evacuations and return residents to community SLP, and fire progression east of FS 10. Hold fire within the identified road system to minimize impact on landscape.</p>						
8. Division/Group Communication Summary						
Function	Channel	RX Frequency N/W	RX Tone/NAC	TX Frequency N/W	TX Tone/NAC	Mode
COMMAND	2	169.5375 N	146.2	164.7125 N	146.2	A
COMMAND	1	169.7500 N	146.2	167.1000 N	146.2	A
COMMAND	11	172.3000 N		165.0125 N	131.8	A
TACTICAL	6	168.2000 N	146.2	168.2000 N	146.2	A
AIR TO GROUND	13	166.8250 N		166.8250 N		A
9. Prepared By (Resource Unit Leader)			Approved By (Planning Section Chief)		Date	Time
BRITTANY PHILLIPS			MISSY FORDER		05/01/2022	1800

Division/Group Assignment List (ICS 204 WF)
Controlled Unclassified Information//Basic

1. Incident Name:		3.	
CERRO PELADO		Branch: I	Division/Group A/Z
2. Operational Period: 0700 - 0700			
Date/Time From: 05/02/2022 0700	MON	Date/Time To: 05/03/2022 0700	TUE
4. Operations Personnel			
OPERATIONS CHIEF	P. MYERS, M. DAVIS V. EDGE, C, COOK (T), J. RAMSAY (T)	BRANCH DIRECTOR	HEATH MORTON
DIVISION/GROUP SUPERVISOR	ANDY PASCARELLA	SAFETY	TOMMY HAWKINS

7. Special Instructions:

- Briefing will be held at base camp 0700.
- Coordinate with READ before ground disturbance.
- Coordinate with Sandoval County, State Police, and Tribal Nations
- Identify impassable roads with GPS locations in Field Map.
- Do not post photos with archaeological resources that have location information.
- Leave all gates as you found them, either opened or closed. If the gate was closed when you arrived, close it as you leave.
- Identify IA resources off each division to support IA under TFR.
- **** IN THE EVENT OF AN IWI: CONTACT COMMUNICATIONS ON COMMAND**

8. Division/Group Communication Summary						
Function	Channel	RX Frequency N/W	RX Tone/NAC	TX Frequency N/W	TX Tone/NAC	Mode
COMMAND	2	169.5375 N	146.2	164.7125 N	146.2	A
COMMAND	1	169.7500 N	146.2	167.1000 N	146.2	A
COMMAND	11	172.3000 N		165.0125 N	131.8	A
TACTICAL	6	168.2000 N	146.2	168.2000 N	146.2	A
AIR TO GROUND	13	166.8250 N		166.8250 N		A

9. Prepared By (Resource Unit Leader)		Approved By (Planning Section Chief)		Date	Time
BRITTANY PHILLIPS		MISSY FORDER		05/01/2022	1800

Division/Group Assignment List (ICS 204 WF)
Controlled Unclassified Information//Basic

1. Incident Name:			3.			
CERRO PELADO			Branch:		Division/Group	
2. Operational Period: 0700 - 0700			I		F	
Date/Time From: 05/02/2022 0700	MON	Date/Time To: 05/03/2022 0700				
4. Operations Personnel						
OPERATIONS CHIEF		P. MYERS, M. DAVIS V. EDGE, C. COOK (T), J. RAMSAY (T)		BRANCH DIRECTOR		HEATH MORTON
DIVISION/GROUP SUPERVISOR		JOEL BURGETT BLAINE MCKINNON (T)		SAFETY		DAVE STONE
5. Resources Assigned this Period						
Strike Team / Task Force / Resource Designator	LWD	Leader	Number Persons	Drop Off PT./Time	Pick Up PT./Time	
O-189 STEN	05/15	ORTA, JAMES	1	BASE CAMP/0700	BASE CAMP/1900	
O-184 HEQB	05/14	RUSSELL HAYS	1	BASE CAMP/0700	BASE CAMP/1900	
C-1 T2IA CALIFORNIA 63	05/07	RAY BATRES	20	BASE CAMP/0700	BASE CAMP/1900	
C-13 T2 MOUNTAINEER CONTRACTING	05/09	JUAN PEREZ	20	BASE CAMP/0700	BASE CAMP/1900	
C-19 T2 PACO#11	05/09	DEREK FINCH	20	BASE CAMP/0700	BASE CAMP/1900	
C-12 T2 BIRRUETA	05/08	CRISTIAN JUAREZ	20	BASE CAMP/0700	BASE CAMP/1900	
O-123 SMOD NM MODULE 6	05/07	MATT HEFFLER	4	BASE CAMP/0700	BASE CAMP/1900	
O-199 FMOD FALLER MODULE - UNDERDOG TIMBER FALLING, INC. - FALLER	05/15	DANIEL O'RILEY	3	BASE CAMP/0700	BASE CAMP/1900	
E-5 ENG3 STONE MOUNTAIN PROTECTION	05/05	JOHN DICKERSON	4	BASE CAMP/0700	BASE CAMP/1900	
E-109 ENG4 ARROW FIRE & LAND MANAGEMENT	05/09	STEVE MARROW	3	BASE CAMP/0700	BASE CAMP/1900	
E-107 ENG5 LAPOINT FD	05/09	LANE HARRIS	3	BASE CAMP/0700	BASE CAMP/1900	
E-141 ENG6 310 DUST CONTROL	05/11	CHAD MORRIS	3	BASE CAMP/0700	BASE CAMP/1900	
E-155 ENG6 LA-7	05/07	LIEMER	3	BASE CAMP/0700	BASE CAMP/1900	
WTT1 LA T-1		CROCKETT	2	BASE CAMP/0700	BASE CAMP/1900	
WTT2 LA T-5		AUSTIN	2	BASE CAMP/0700	BASE CAMP/1900	
E-181 WTS2 DNN ENTERPRISES INC -	05/14	STEVE PIPER	1	BASE CAMP/0700	BASE CAMP/1900	
E-182 WTS2 - DNN ENTERPRISES	05/14	MARK DAUER	1	BASE CAMP/0700	BASE CAMP/1900	
E-104DOZ2 CECIL LOGGING	05/10	ROCKY FITHIN	2	BASE CAMP/0700	BASE CAMP/1900	
E-166 DOZ2 KIT CONTRACTING LLC	05/14	CHRISTOPHER BOTTOMLY	2	BASE CAMP/0700	BASE CAMP/1900	
8. Division/Group Communication Summary						
Function	Channel	RX Frequency N/W	RX Tone/NAC	TX Frequency N/W	TX Tone/NAC	Mode
COMMAND	1	169.7500 N	146.2	167.1000 N	146.2	A
COMMAND	2	169.5375	146.2	164.7125	146.2	A
COMMAND	11	172.3000 N		165.0125 N	131.8	A
TACTICAL	5	168.0500 N	146.2	168.0500 N	146.2	A
AIR TO GROUND	13	166.8250 N		166.8250 N		A
9. Prepared By (Resource Unit Leader)			Approved By (Planning Section Chief)		Date	Time
BRITTANY PHILLIPS			MISSY FORDER		05/01/2022	1800

Division/Group Assignment List (ICS 204 WF)
Controlled Unclassified Information//Basic

1. Incident Name:			3.			
CERRO PELADO			Branch:		Division/Group	
2. Operational Period: 0700 - 0700			I		F	
Date/Time From: 05/02/2022 0700 MON		Date/Time To: 05/03/2022 0700 TUE				
4. Operations Personnel						
OPERATIONS CHIEF		P. MYERS, M. DAVIS V. EDGE, C. COOK (T), J. RAMSAY (T)		BRANCH DIRECTOR		HEATH MORTON
DIVISION/GROUP SUPERVISOR		JOEL BURGETT BLAINE MCKINNON (T)		SAFETY		DAVE STONE
5. Resources Assigned this Period						
Strike Team / Task Force / Resource Designator		LWD	Leader	Number Persons	Drop Off PT./Time	Pick Up PT./Time
E-101 DOZ3 MOORE'S QUALITY EARTHMOVING		05/11	ERIC BLEVINS	1	BASE CAMP/0700	BASE CAMP/1900
E-128 UTV TYPE 7 LA		05/05	KELLY STERNA	2	BASE CAMP/0700	BASE CAMP/1900
O-140 MED 1		05/09	CODY KELLER	2	BASE CAMP/0700	BASE CAMP/1900
E-62 AMBU		05/09	ARNOLDO RIVERA	2	BASE CAMP/0700	BASE CAMP/1900
6. Control Operations/Work Assignments:						
<p>Task: Continue structure protection on Cochiti Mesa. Continue to establish primary and alternate lines along Cochiti Mesa.</p> <p>Purpose: Protect structures on Cochiti Mesa and check the fire progression to the northwest.</p> <p>End State: Lessening the footprint of the Cerro Pelado Fire while minimizing the impact to private lands.</p>						
7. Special Instructions:						
<ul style="list-style-type: none"> • Briefing will be held at base camp 0700. • Coordinate with READ before ground disturbance. • Coordinate with Sandoval County, State Police, and Tribal Nations • Identify impassable roads with GPS locations in Field Map. • Do not post photos with archaeological resources that have location information. • Leave all gates as you found them, either opened or closed. If the gate was closed when you arrived, close it as you leave. • Identify IA resources off each division to support IA under TFR. • ** IN THE EVENT OF AN IWI: CONTACT COMMUNICATIONS ON COMMAND 						
8. Division/Group Communication Summary						
Function	Channel	RX Frequency N/W	RX Tone/NAC	TX Frequency N/W	TX Tone/NAC	Mode
COMMAND	1	169.7500 N	146.2	167.1000 N	146.2	A
COMMAND	2	169.5375	146.2	164.7125	146.2	A
COMMAND	11	172.3000 N		165.0125 N	131.8	A
TACTICAL	5	168.0500 N	146.2	168.0500 N	146.2	A
AIR TO GROUND	13	166.8250 N		166.8250 N		A
9. Prepared By (Resource Unit Leader)			Approved By (Planning Section Chief)		Date	Time
BRITTANY PHILLIPS			MISSY FORDER		05/01/2022	1800

Division/Group Assignment List (ICS 204 WF)
Controlled Unclassified Information//Basic

1. Incident Name:			3.			
CERRO PELADO			Branch:		Division/Group	
2. Operational Period: 0700 - 0700			I		M	
Date/Time From: 05/02/2022 0700 MON		Date/Time To: 05/03/2022 0700 TUE				
4. Operations Personnel						
OPERATIONS CHIEF		P. MYERS, M. DAVIS V. EDGE, C. COOK (T), J. RAMSAY (T)		BRANCH DIRECTOR		HEATH MORTON
DIVISION/GROUP SUPERVISOR		MIKE WARD		SAFETY		
5. Resources Assigned this Period						
Strike Team / Task Force / Resource Designator		LWD	Leader	Number Persons	Drop Off PT./Time	Pick Up PT./Time
C-23 T2IA DIAMOND FIRE		05/15	LARRY ECKELMAN	20	BASE CAMP/0700	BASE CAMP/1900
E-179 ENG3 DEER MOUNTAIN FPD		05/15	PHIL STEVENS	4	BASE CAMP/0700	BASE CAMP/1900
E-168 DOZ2 FUEGO		05/14	GEORGE BEEN	2	BASE CAMP/0700	BASE CAMP/1900
E-169 DOZ2 SIERRA VALLEY		05/14	CORLEY HENDERSON	2	BASE CAMP/0700	BASE CAMP/1900
E-190 AMBU		05/15	MIKE SHEPPARD	2	BASE CAMP/0700	BASE CAMP/1900
6. Control Operations/Work Assignments:						
Task: Identify primary lines on Pueblo tribal lands coordinating with tribes.						
Purpose: Limit fire spread on tribal lands using natural barriers and road systems to lessen impacts to cultural and natural resources.						
End State: Lessen the footprint of the Cerro Pelado Fire while minimizing the impacts on tribal lands.						
7. Special Instructions:						
<ul style="list-style-type: none"> • Briefing will be held at base camp 0700. • Coordinate with READ before ground disturbance. • Coordinate with Sandoval County, State Police, and Tribal Nations • Identify impassable roads with GPS locations in Field Map. • Do not post photos with archaeological resources that have location information. • Leave all gates as you found them, either opened or closed. If the gate was closed when you arrived, close it as you leave. • Identify IA resources off each division to support IA under TFR. • ** IN THE EVENT OF AN IWI: CONTACT COMMUNICATIONS ON COMMAND 						
8. Division/Group Communication Summary						
Function	Channel	RX Frequency N/W	RX Tone/NAC	TX Frequency N/W	TX Tone/NAC	Mode
COMMAND	1	169.7500 N	146.2	167.1000 N	146.2	A
COMMAND	2	169.5375 N	146.2	164.7125 N	146.2	A
COMMAND	11	172.3000 N		165.0125 N	131.8	A
TACTICAL	10	166.7750 N	146.2	166.7750 N	146.2	A
AIR TO GROUND	13	166.8250 N		166.8250 N		A
9. Prepared By (Resource Unit Leader)			Approved By (Planning Section Chief)		Date	Time
BRITTANY PHILLIPS			MISSY FORDER		05/01/2022	1800

Division/Group Assignment List (ICS 204 WF)
Controlled Unclassified Information//Basic

1. Incident Name:			3.			
CERRO PELADO			Branch:		Division/Group	
2. Operational Period: 0700 - 0700			I		R	
Date/Time From: 05/02/2022 0700	MON	Date/Time To: 05/03/2022 0700				
4. Operations Personnel						
OPERATIONS CHIEF		P. MYERS, M. DAVIS V. EDGE, C. COOK (T), J. RAMSAY (T)		BRANCH DIRECTOR		HEATH MORTON
DIVISION/GROUP SUPERVISOR		FRANK ALVES LUKE HELFENSTIEN (T)		SAFETY		BRAD LIDELL
5. Resources Assigned this Period						
Strike Team / Task Force / Resource Designator	LWD	Leader	Number Persons	Drop Off PT./Time	Pick Up PT./Time	
C-7 T1 MORMON LAKE IHC	05/08	SARA SWEENEY	21	BASE CAMP/0700	BASE CAMP/1900	
C-14 T2IA TAYLOR	05/08	VERNON JACKSON	19	BASE CAMP/0700	BASE CAMP/1900	
C-9 T2 ROCHA	05/08	JORGE DURAN	20	BASE CAMP/0700	BASE CAMP/1900	
C-18 T2 GFP	05/09	JOHN FITTS	20	BASE CAMP/0700	BASE CAMP/1900	
E-176 ENG3 CA-SHF 311	05/15	MATTHEW PUCKETT	5	BASE CAMP/0700	BASE CAMP/1900	
E-106 ENG6 GREY WILDLAND	05/09	JAKE WARDEN	3	BASE CAMP/0700	BASE CAMP/1900	
E-174 ENG6 PINO	05/15	DARIN PINO	3	BASE CAMP/0700	BASE CAMP/1900	
E-9 WTT2 TOUGH EQUIPMENT	05/09	JOHN CULTRIP	1	BASE CAMP/0700	BASE CAMP/1900	
E-103 DOZ2 WEAVER GRADING	05/09	KEVIN GAINES	2	BASE CAMP/0700	BASE CAMP/1900	
E-102 DOZ3 BALDWIN FORESTRY	05/11	DAVID BALDWIN	2	BASE CAMP/0700	BASE CAMP/1900	
E-153 UTV				BASE CAMP/0700	BASE CAMP/1900	
E-151 GRD2 GM EMULSIONS	05/12	ERIC GIRON	1	BASE CAMP/0700	BASE CAMP/1900	
O-17 REAF	05/07	BECKY BAISDEN	1	BASE CAMP/0700	BASE CAMP/1900	
O-102 REAF	05/07	JORDAN JARRETT	1	BASE CAMP/0700	BASE CAMP/1900	
O-117 REAF	05/08	LISA THOMPSON	1	BASE CAMP/0700	BASE CAMP/1900	
O-99 REMS	05/08	TANNER SMITH	4	BASE CAMP/0700	BASE CAMP/1900	
O-131 MED 3	05/09	JEFFERY MOLEN	2	BASE CAMP/0700	BASE CAMP/1900	
6. Control Operations/Work Assignments:						
Task: Continue establishing primary lines south to the Pueblo tribal lands.						
Purpose: Keep fire in 2011 Los Conchas fire footprint.						
End State: Lessening the foot print of the Cerro Pelado fire while minimizing the impact to private lands.						
8. Division/Group Communication Summary						
Function	Channel	RX Frequency N/W	RX Tone/NAC	TX Frequency N/W	TX Tone/NAC	Mode
COMMAND	2	169.5375 N	146.2	164.7125 N	146.2	A
COMMAND	11	172.3000 N		165.0125 N	131.8	A
TACTICAL	8	168.2500 N	146.2	168.2500 N	146.2	A
AIR TO GROUND	13	166.8250 N		166.8250 N		A
9. Prepared By (Resource Unit Leader)			Approved By (Planning Section Chief)		Date	Time
BRITTANY PHILLIPS			MISSY FORDER		05/01/2022	1800

Division/Group Assignment List (ICS 204 WF)
Controlled Unclassified Information//Basic

1. Incident Name:		3.	
CERRO PELADO		Branch: I	Division/Group R
2. Operational Period: 0700 - 0700			
Date/Time From: 05/02/2022 0700	MON	Date/Time To: 05/03/2022 0700	TUE
4. Operations Personnel			
OPERATIONS CHIEF	P. MYERS, M. DAVIS V. EDGE, C. COOK (T), J. RAMSAY (T)	BRANCH DIRECTOR	HEATH MORTON
DIVISION/GROUP SUPERVISOR	FRANK ALVES LUKE HELFENSTIEN (T)	SAFETY	BRAD LIDELL

7. Special Instructions:

- Briefing will be held at base camp 0700.
- Coordinate with READ before ground disturbance.
- Coordinate with Sandoval County, State Police, and Tribal Nations
- Identify impassable roads with GPS locations in Field Map.
- Do not post photos with archaeological resources that have location information.
- Leave all gates as you found them, either opened or closed. If the gate was closed when you arrived, close it as you leave.
- Identify IA resources off each division to support IA under TFR.
- **** IN THE EVENT OF AN IWI: CONTACT COMMUNICATIONS ON COMMAND**

8. Division/Group Communication Summary						
Function	Channel	RX Frequency N/W	RX Tone/NAC	TX Frequency N/W	TX Tone/NAC	Mode
COMMAND	2	169.5375 N	146.2	164.7125 N	146.2	A
COMMAND	11	172.3000 N		165.0125 N	131.8	A
TACTICAL	8	168.2500 N	146.2	168.2500 N	146.2	A
AIR TO GROUND	13	166.8250 N		166.8250 N		A
9. Prepared By (Resource Unit Leader)		Approved By (Planning Section Chief)		Date	Time	
BRITTANY PHILLIPS		MISSY FORDER		05/01/2022	1800	

Division/Group Assignment List (ICS 204 WF)
Controlled Unclassified Information//Basic

1. Incident Name:			3.			
CERRO PELADO			Branch:		Division/Group	
2. Operational Period: 0700 - 0700			I		STRUCTURE	
Date/Time From: 05/02/2022 0700	MON	Date/Time To: 05/03/2022 0700				
4. Operations Personnel						
OPERATIONS CHIEF		P. MYERS, M. DAVIS V. EDGE, C. COOK (T), J. RAMSAY (T)		BRANCH DIRECTOR		HEATH MORTON
DIVISION/GROUP SUPERVISOR		CRAIG ROBERTSON				
5. Resources Assigned this Period						
Strike Team / Task Force / Resource Designator		LWD	Leader	Number Persons	Drop Off PT./Time	Pick Up PT./Time
E-111 ENG3 MISSOULA CITY FIRE DEPT		05/09	RANDAL THORPE	3	BASE CAMP/0700	BASE CAMP/1900
ENG4 ENGINE 431 SNF				5	BASE CAMP/0700	BASE CAMP/1900
E-142 ENG6 MT-BDF		05/05	GORDON WEGLEY	4	BASE CAMP/0700	BASE CAMP/1900
E-180 DOZ3		05/14	TONY WALKER	2	BASE CAMP/0700	BASE CAMP/1900
O-202 SOFR		05/15	LANCE DELGADO	1	BASE CAMP/0700	BASE CAMP/1900
6. Control Operations/Work Assignments:						
Task: Identify structures threatened by the Cerro Pelado wildfire and develop a structure protection plan in coordination with the local cooperating fire agencies. Continue structure protection on Cochiti Mesa.						
Purpose: Triage and protect all structures identified for structure protection needs.						
End State: Threat to identified structures has been reduced as much as practical.						
7. Special Instructions:						
<ul style="list-style-type: none"> • Briefing will be held at base camp 0700. • Coordinate with READ before ground disturbance. • Coordinate with Sandoval County, State Police, and Tribal Nations • Identify impassable roads with GPS locations in Field Map. • Do not post photos with archaeological resources that have location information. • Leave all gates as you found them, either opened or closed. If the gate was closed when you arrived, close it as you leave. • Identify IA resources off each division to support IA and TFR. • ** IN THE EVENT OF AN IWI: CONTACT COMMUNICATIONS ON COMMAND 						
8. Division/Group Communication Summary						
Function	Channel	RX Frequency N/W	RX Tone/NAC	TX Frequency N/W	TX Tone/NAC	Mode
COMMAND	1	169.7500 N	146.2	167.1000 N	146.2	A
COMMAND	2	169.5375 N	146.2	164.7125 N	146.2	A
COMMAND	11	172.3000 N		165.0125 N	131.8	A
TACTICAL	7	168.6000 N	146.2	168.6000 N	146.2	A
AIR TO GROUND	13	166.8250 N		166.8250 N		A
9. Prepared By (Resource Unit Leader)			Approved By (Planning Section Chief)		Date	Time
BRITTANY PHILLIPS			MISSY FORDER		05/01/2022	1800

Division/Group Assignment List (ICS 204 WF)
Controlled Unclassified Information//Basic

1. Incident Name:			3.			
CERRO PELADO			Branch:		Division/Group	
2. Operational Period: 0700 - 0700			I		IA	
Date/Time From: 05/02/2022 0700	MON	Date/Time To: 05/03/2022 0700				
4. Operations Personnel						
OPERATIONS CHIEF		P. MYERS, M. DAVIS V. EDGE, C. COOK (T), J. RAMSAY (T)		BRANCH DIRECTOR		HEATH MORTON
DIVISION/GROUP SUPERVISOR		KRIS SCHROEDER		SAFETY		TOMMY HAWKINS
5. Resources Assigned this Period						
Strike Team / Task Force / Resource Designator		LWD	Leader	Number Persons	Drop Off PT./Time	Pick Up PT./Time
O-108 TFLD		05/11	WILL BERNARD	1	BASE CAMP/0700	BASE CAMP/1900
C-3 T2 BLUE MOUNTAIN		05/10	JORGE PEREZ	20	BASE CAMP/0700	BASE CAMP/1900
E-177 ENG3 376		05/14	BRIAN HENDRICKS	6	BASE CAMP/0700	BASE CAMP/1900
E-108 ENG6 HART VENTURES		05/11	KYLE COLTEN	3	BASE CAMP/0700	BASE CAMP/1900
E-140 ENG6 THE GENERAL		05/10	PAUL ANDERSON	3	BASE CAMP/0700	BASE CAMP/1900
E-143 ENG6		05/10	AUSTIN STOVER	2	BASE CAMP/0700	BASE CAMP/1900
E-144 ENG6 GUNNISON FPD		05/11	BEN BRACK	4	BASE CAMP/0700	BASE CAMP/1900
E-150 ENG6 SANDOVAL COUNTY BRUSH 22		05/10	HARRIS TOYA	3	BASE CAMP/0700	BASE CAMP/1900
E-146 WTT1		05/05	BILL WEST	2	BASE CAMP/0700	BASE CAMP/1900
E-113 WTS2 BIG CEDAR		05/10	BEN ANDERBERG	1	BASE CAMP/0700	BASE CAMP/1900
6. Control Operations/Work Assignments:						
Task: Ready stand by for initial attack inside TFR and as requested by cooperators.						
Purpose: Provide initial attack support to assigned response area.						
End State: Provide initial attack support for the TFR and surrounding cooperators.						
7. Special Instructions:						
<ul style="list-style-type: none"> Briefing will be held at base camp 0700. Provide support for the Freelove Fire on request of agency. Coordinate with READ before ground disturbance. Coordinate with Sandoval County, State Police, and Tribal Nations Identify impassable roads with GPS locations in Field Map. Do not post photos with archaeological resources that have location information. Leave all gates as you found them, either opened or closed. If the gate was closed when you arrived, close it as you leave. Identify IA resources off each division to support IA under TFR. 						
8. Division/Group Communication Summary						
Function	Channel	RX Frequency N/W	RX Tone/NAC	TX Frequency N/W	TX Tone/NAC	Mode
COMMAND	1	169.7500 N	146.2	167.1000 N	146.2	A
COMMAND	2	169.5375 N	146.2	164.7125 N	146.2	A
TACTICAL	9	166.7250 N	146.2	166.7250 N	146.2	A
AIR TO GROUND	12	168.3125 N		168.3125 N		A
9. Prepared By (Resource Unit Leader)			Approved By (Planning Section Chief)		Date	Time
BRITTANY PHILLIPS			MISSY FORDER		05/01/2022	1800

Division/Group Assignment List (ICS 204 WF)
Controlled Unclassified Information//Basic

1. Incident Name:		3.	
CERRO PELADO		Branch: I	Division/Group IA
2. Operational Period: 0700 - 0700			
Date/Time From: 05/02/2022 0700	MON	Date/Time To: 05/03/2022 0700	TUE
4. Operations Personnel			
OPERATIONS CHIEF	P. MYERS, M. DAVIS V. EDGE, C. COOK (T), J. RAMSAY (T)	BRANCH DIRECTOR	HEATH MORTON
DIVISION/GROUP SUPERVISOR	KRIS SCHROEDER	SAFETY	TOMMY HAWKINS

7. Special Instructions:

- ** IN THE EVENT OF AN IWI: CONTACT COMMUNICATIONS ON COMMAND

8. Division/Group Communication Summary						
Function	Channel	RX Frequency N/W	RX Tone/NAC	TX Frequency N/W	TX Tone/NAC	Mode
COMMAND	1	169.7500 N	146.2	167.1000 N	146.2	A
COMMAND	2	169.5375 N	146.2	164.7125 N	146.2	A
TACTICAL	9	166.7250 N	146.2	166.7250 N	146.2	A
AIR TO GROUND	12	168.3125 N		168.3125 N		A

9. Prepared By (Resource Unit Leader)		Approved By (Planning Section Chief)		Date	Time
BRITTANY PHILLIPS		MISSY FORDER		05/01/2022	1800

Division/Group Assignment List (ICS 204 WF)
Controlled Unclassified Information//Basic

1. Incident Name:			3.			
CERRO PELADO			Branch:		Division/Group	
2. Operational Period: 0700 - 0700			II		NIGHT	
Date/Time From: 05/02/2022 0700	MON	Date/Time To: 05/03/2022 0700				
4. Operations Personnel						
OPERATIONS CHIEF		P. MYERS, M. DAVIS V. EDGE, C. COOK (T), J.RAMSAY (T)		BRANCH DIRECTOR		CORDELL TAYLOR
DIVISION/GROUP SUPERVISOR		AARON EDWARDS				
5. Resources Assigned this Period						
Strike Team / Task Force / Resource Designator	LWD	Leader	Number Persons	Drop Off PT./Time	Pick Up PT./Time	
C-24 T2 TORRES	05/08	ISMAEL LOPEZ	20	BASE CAMP/1900	BASE CAMP/0700	
E-110 ENG3 OUTBACK FIREFIGHTING	05/10	JIM REILLY	3	BASE CAMP/1900	BASE CAMP/0700	
E-175 ENG4 FIREANT	05/15	CHRIS ANTHIS	3	BASE CAMP/1900	BASE CAMP/0700	
E-170 ENG5 ELEPHANT BUTTE	05/14	RUSSELL THRUN	3	BASE CAMP/1900	BASE CAMP/0700	
E-1 ENG6 CARBONDALE	05/07	SCOTT EVANS	3	BASE CAMP/1900	BASE CAMP/0700	
E-178 ENG6 UT	05/13	CHRIS LEWIS	2	BASE CAMP/1900	BASE CAMP/0700	
E-191 MED 4	05/14	M COURTRNEY	2	BASE CAMP/1900	BASE CAMP/0700	
E-59 AMBU	05/10	SAGE STEWART	2	BASE CAMP/1900	BASE CAMP/0700	
O-200 SOF2	05/15	JIM GRANT	1	BASE CAMP/1900	BASE CAMP/0700	
6. Control Operations/Work Assignments:						
Task: Patrol and monitor along fire lines focusing on values at risk and critical areas of concern as directed from day shift. Engage as needed along fire perimeter.						
Purpose: Ensure safety of fire fighters and protect values at risk						
End State: Safety and values at risk are protected. Priority areas of the fire are secured to provide a successful transition with day shift.						
7. Special Instructions:						
<ul style="list-style-type: none"> • Briefing will be held at base camp 0700. • Coordinate with READ before ground disturbance. • Coordinate with Sandoval County, State Police, and Tribal Nations • Identify impassable roads with GPS locations in Field Map. • Do not post photos with archaeological resources that have location information. • Leave all gates as you found them, either opened or closed. If the gate was closed when you arrived, close it as you leave. • Identify IA resources off each division to support IA under TFR. 						
8. Division/Group Communication Summary						
Function	Channel	RX Frequency N/W	RX Tone/NAC	TX Frequency N/W	TX Tone/NAC	Mode
COMMAND	1	169.7500 N	146.2	167.1000 N	146.2	A
COMMAND	2	169.5375 N	146.2	164.7125 N	146.2	A
COMMAND	11	172.3000 N		165.0125 N		A
9. Prepared By (Resource Unit Leader)			Approved By (Planning Section Chief)		Date	Time
BRITTANY PHILLIPS			MISSY FORDER		05/01/2022	1800

Division/Group Assignment List (ICS 204 WF)
Controlled Unclassified Information//Basic

1. Incident Name:				3.			
CERRO PELADO				Branch:		Division/Group	
2. Operational Period: 0700 - 0700				II		NIGHT	
Date/Time From: 05/02/2022 0700 MON		Date/Time To: 05/03/2022 0700 TUE					
4. Operations Personnel							
OPERATIONS CHIEF		P. MYERS, M. DAVIS V. EDGE, C. COOK (T), J.RAMSAY (T)		BRANCH DIRECTOR		CORDELL TAYLOR	
DIVISION/GROUP SUPERVISOR		AARON EDWARDS					
7. Special Instructions:							
<ul style="list-style-type: none"> ** IN THE EVENT OF AN IWI: CONTACT COMMUNICATIONS ON COMMAND 							
8. Division/Group Communication Summary							
Function	Channel	RX Frequency N/W	RX Tone/NAC	TX Frequency N/W	TX Tone/NAC	Mode	
COMMAND	1	169.7500 N	146.2	167.1000 N	146.2	A	
COMMAND	2	169.5375 N	146.2	164.7125 N	146.2	A	
COMMAND	11	172.3000 N		165.0125 N		A	
9. Prepared By (Resource Unit Leader)			Approved By (Planning Section Chief)			Date	Time
BRITTANY PHILLIPS			MISSY FORDER			05/01/2022	1800

INCIDENT RADIO COMMUNICATIONS PLAN I-205				1. INCIDENT NAME			2. DATE/TIME PREPARED			3. OPERATIONAL PERIOD DATE/TIME		
				Cerro Pelado			5/01/2022 1700			05/02/22 0700 - 05/03/22 0700		
4. BASIC RADIO CHANNEL UTILIZATION												
Ch #	Function	Channel Name	Assignment	RX Freq	N/W	RX Tone/NAC	TX Freq	N/W	TX Tone/NAC	Mode Analog (A) Digital (D) Mixed (M)	Remarks	
1	Command	CMD 1	DIV A/F/M	169.7500	N	146.2	167.1000	N	146.2	A	CERRO PELADO	
2	Command	CMD 2	DIV R & Z	169.5375	N	146.2	164.7125	N	146.2	A	ROAD 10/270 INTERSECTION	
3	Command	CMD 3	ICP	170.4125	N	146.2	165.9625	N	146.2	A	135 ROAD	
4	Unassigned		Unassigned									
5	Tactical	TAC 1	DIV F	168.0500	N	146.2	168.0500	N	146.2	A		
6	Tactical	TAC 2	DIV A/Z	168.2000	N	146.2	168.2000	N	146.2	A		
7	Tactical	TAC 3	STRUCTURAL PROTECTION	168.6000	N	146.2	168.6000	N	146.2	A		
8	Tactical	TAC 4	DIV R	168.2500	N	146.2	168.2500	N	146.2	A		
9	Tactical	TAC 5	IA	166.7250	N	146.2	166.7250	N	146.2	A		
10	Tactical	TAC 6	DIV M	166.7750	N	146.2	166.7750	N	146.2	A	Night Shift	
11	Command	PELADO	All Divisions	172.3000	N		165.0125	N	131.8	A	Santa Fe Dispatch	
12	Air Ground	A/G 51		168.3125	N		168.3125	N		A	Initial Attack / Local Air to Ground	
13	Air Ground	A/G PRI		166.8250	N		166.8250	N		A		
14	Air Ground	A/G SEC		168.7375	N		168.7375	N		A		
15	Medivac	VMED 28		155.3400	N		155.3400	N	156.7	A	Air Ambulance	
16	AIRGUARD			168.6250	N		168.6250	N	110.9	A		
5. Special Instructions:		USE HUMAN REPEATER WHEN NECESSARY. IF ASSIGNED COMMAND CHANNEL DOES NOT WORK TRY THE OTHER ONE.										
6. I-205 Prepared By: Communications Unit Leader			Name: Barry Stearns					Signature: <i>Barry H Stearns</i>				


AIR OPERATIONS SUMMARY ICS 220

Prepared By: John Mason

Prepared Date: 5/1/2022

Prepared Time: 1800

1. INCIDENT NAME: Cerro Pelado	2. OPS PERIOD DATE: 5/2/22	START TIME: 0900	END TIME: 2030	SUNRISE 0611	SUNSET 1951
---	--------------------------------------	----------------------------	--------------------------	------------------------	-----------------------

3. REMARKS and RISK MITIGATIONS: All missions will be analyzed in terms of hazards and risks. Insure to brief for all IA missions to include new frequencies, ground contacts and other aircraft. High level to low level recon of each new LZ/Dipsite  Retardant Avoidance areas:	4. READY ALERT AIRCRAFT: IA 7HE See Medical Plan	5. TFR # 2/6919 Freq: 118.825 Surface ≥ 14,000' MSL See NOTAM for Poly
---	---	--

6. PERSONNEL	NAME	PHONE #	7. FREQUENCIES	AM	FM	8. FIXED-WING
AOBD	Lynne Howard	678-699-3266	A/A (Fixed/TFR)	118.825		Air Attack: 78NA / 690B / Base: ABQ Lead Planes/Airtankers/Scoopers - Order through Air Attack. If air attack is not up order through AOBD. Scoopers: 260 / CL-415 / Base: SAF 263 / CL-415 / Base: SAF Manager: Patrick Kane 505-250-3352 TA49 35° 49.6644'N x 106° 19.0908'W Santa Fe Airport (SAF) 35° 37.02'N x 106° 05'.22'W Costs to: 2022.cerropelado.finance@firenet.gov
ASGS	John Mason	865-336-6664	A/A (Rotor)	121.325		
ATGS ATGS-T	Todd Pease Adam Soper	541-408-2309	A/G Command (Primary)		166.8250	
HEBM (Santa Fe)	Brian Kleisen	505-467-9351	A/G Tactical (Secondary)		168.7375	
HMGB (7HE)	Josh Brookshire	505-670-9385	A/G 51 (IA)		168.3125	
HMGB (3CH)	Jason Combs	812-608-1266	DECK (Santa Fe)		163.100	
Santa Fe Dispatch - Aircraft	Tessa	505-438-5600	AIRGUARD (emergency only)		168.6250 TX Tone110.9	

9.HELICOPTERS

FAA N#	T Y	MAKE/ MODEL	BASE	AVAIL	START	REMARKS	FAA N#	T Y	MAKE/ MODEL	BASE	AVAIL	START	REMARKS
7HE	3	AS350B3	TA49	0800	0830	Not Assigned Forest IA Ship	Guard (Lobo 29)	1	UH60	Santa Fe (SAF)	---	---	Off Duty
473CH	1	CH-47D	Santa Fe (SAF)	0800	0830	Bucket	Guard (Lobo 31)	1	UH60	Santa Fe (SAF)	0800	0830	Bucket / ANG Base
Guard (Lobo 18)	1	UH60	Santa Fe (SAF)	0800	0830	Bucket / ANG Base	Guard (Lobo 55)	1	UH60	Santa Fe (SAF)	---	---	Off Duty

**Cerro Pelado Fire
Human Resource Message
May 2, 2022**

Rights and Responsibilities While on Assignment

You have a right to:

- A safe work environment
- Adequate information, food, sleep, equipment, and transportation
- Answers to your questions

But it's not one-sided. Your help, cooperation and commitment are needed. For all fire personnel to be effective, here is an outline of your responsibilities:

❖ **Promote and Maintain Good Communications**

Adequate and accurate communications and information flow are essential for efficient fire suppression efforts and effective interpersonal relations.

❖ **Maintain an Attitude of Respect and Concern for your Colleagues.**

Fire suppression efforts can only be accomplished by accessing the skills and abilities of a wide variety of people. An attitude of **mutual respect** and **appropriate behavior** is essential for all personnel. Civil Rights violations will be dealt with promptly. If you have a concern, please report it to the Human Resource Specialist, your supervisor, or any member of the Management Team.

Fire camp will be a Drug and Alcohol-Free workplace. Here are the rules:

From the Fire line Handbook, Chapter 6 – Common Responsibilities:

Non-prescription unlawful drugs and alcohol are not permitted at the incident. Possession or use of these substances will result in disciplinary action.

Remember, **YOU** are responsible for your conduct and behavior.

**Janine Summy, Human Resource Specialist, 509-429-1206,
HRSPSummy@gmail.com**

"The goal of coaching is not in fixing what is broken, but in discovering new talents and new ways to use old talents that lead to far greater effectiveness." ~ Gifford Pinchot

*Now and then it's good to pause in our pursuit of happiness and just be happy.
The measure of a life, after all, is not its duration, but its donation. ~Guillaume Apollinaire*

CERRO PELADO FIRE

Finance

Please see us after briefing
E-104, E-131

*****PLEASE NOTE*****

If you worked on FREELOVE FIRE

NMVCP-000055, PPPLF2 (1522)

Please **e-mail** all documents that pertain to your assignment
to the Cerro Pelado inbox.

2022.cerropelado.finance@firenet.gov

Use the following format on the email subject line:
(Example: TIME/O-200/SBear/Safety)

Contact Finance Section at 720-527-2533

Required Financial Documents:

Agency Overhead	Agency ADs / EFFs	VIPR Resources	Contract / Agency Crews	Cooperators
Resource Order Signed CTRs	Resource Order Casual Hire Form Signed CTRs	Resource Order VIPR Agreement Schedule of Items Inspections Signed STs	Resource Order Manifest Agreement / Contract Schedule of Items Inspections Signed CTRs	Resource Order Agreement Signed STs /CTRs



Training Specialist Cerro Pelado

The Training Specialist is working remotely. Training Specialist contact information for the Cerro Pelado Fire is:

- Robert Rivelle
- Most important; If any Trainee or Trainer has any questions or concerns, call/text: 707.498.1761 **anytime**.
- Email: robert_rivelle@nps.gov

How to register as a Trainee:

1. Use the QR code below to register. If you're unable to register using the QR code, please call 707.498.1761 anytime.
2. Once registered, you will receive text and email updates.

How to close-out your training assignment:

1. **Trainer:** Complete and Evaluation Record in the back of the Position Task Book and make as many entries as possible within the individual tasks. Discuss this with your Trainee.
2. **Trainer:** Complete an individual performance rating (ICS 225) and go over the performance rating with your Trainee.
3. **Trainee:** Text a photo or email your individual performance rating (ICS 225) to the Training Specialist.
4. **Trainee:** Complete the Trainee exit questions at the QR code below.
5. **Trainee:** Once 1-4 are completed, the Trainee and the Training Specialist will have a brief conversation to discuss the Task Book and assignment with the Trainee.
6. **Done**, except for safe travels home!

Trainee Registration



Trainee Exit Questions



Cerro Pelado Fire Demob Unit

Demob Day Approaching?

DEMOB HOURS OF OPERATION: 0730 -2200

720-584-9090 or email:

2022.cerropelado.demob@firenet.gov

1. Ensure that your supervisor has released you from the incident at least 24 hours in advance.
2. Contact FINANCE 24 hours prior to give them a heads-up you are departing: Phone: 720-527-2533
3. Turn in any outstanding CTRs/Shift Tickets. Make sure they are SIGNED.
4. Confirm there is no missing financial documentation. (See Finance Page for full information)

Need Air Travel to get Home?

**IF YOUR RETURN METHOD OF TRAVEL IS BY AIR,
CONTACT DMOB AT LEAST 72-HOURS BEFORE DEMOB DAY**

**Email: Include Gender, Name EXACTLY as it appears on your drivers license, Date of Birth, Departure & Final Destination Airport, city for Rental Car Return, your email and phone number
to: 2022.cerropelado.demob@firenet.gov**

AIR TRAVEL PHONE: 720-584-9090

Cerro Pelado Demob Instructions

On your Demob Day

STEP 1

Ensure that your supervisor has released you from the incident at least 24 hours in advance.

STEP 2

SUPPLY – Return gear and supplies.

- If nothing to turn in, contact supply to clear you.

GROUND SUPPORT – Return pool NERV rentals, receive an inspection, etc.

- Be sure to get inspected.

COMMUNICATIONS – Return communications equipment

STEP 3

FINANCE – To finalize your finance paperwork, do the following:

- **Please call 720-527-2533 to initiate your final OF-288 or OF-286.**
 - **Virtual Demob, please email your final CTR/ST noting Final CTR/ST in the subject line of the email, please include your cell phone number. Cerro Pelado Finance email 2022.cerropelado.finance@firenet.gov**
 - **In-Person Demob: If you are unable to do a virtual demob, please arrange for an in person demob at the ICP. *Please keep your hard copy CTRs/STs to be turned in in-person.***

You need your final, signed OF-288 Time Report or OF-286 Invoice BEFORE starting travel.

STEP 4

Contact DMOB at 720-584-9090 and DMOB will verify that you have completed check- out. Be prepared to talk about your actual departure date and time, your anticipated arrival date and time, and where you will be staying if travel includes overnight stops away from fire camp.

You must complete all four steps to be released in IROC.

Logistics

Ordering Process

Orders should be sent to the below ORDM's by 1300 for Cache Orders. For all other orders please have orders to ORDM's by 0800 hours or 1500 hours. Orders should be routed as shown below:

Chad_wilberger@firenet.gov

Logistics:	Sally Browning sbrowning50@gmail.com Jane Artega 530-957-3558
Facilities Unit Contact:	Base Camp: Jimmy Rickard 706-308-2015 ICP: Susanne Adams 715-783-0291
Ground Support:	Jay Aron 401-316-8730
Supply Unit	Tom Piper 727-514-5513
Medical Unit	Fred Adler 479-238-6064 or Nick Arnett 408-888-1900
Security Manager:	Karen Bradford 423-851-4206
Food Unit	Clyde Leggins 828-334-2340
Communications	Barry Stearns 954-553-6544

Fuel Truck Hours 0630 to 0900 and 1800 to 2100

Fuel Tender will be located at the Banco Bonito Staging area on Friday morning and evening, as well as Saturday morning. Fueling will begin at base camp starting Saturday evening.

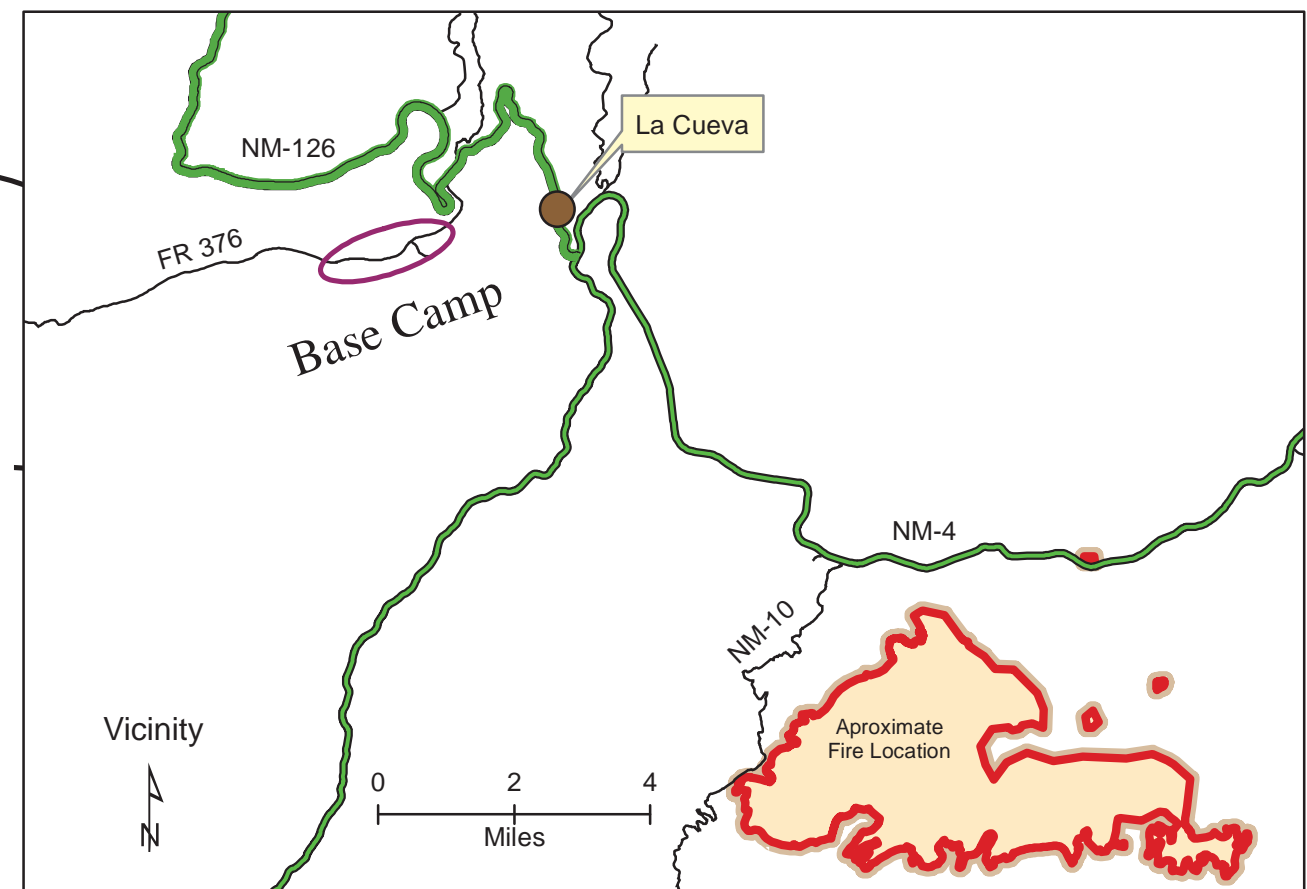
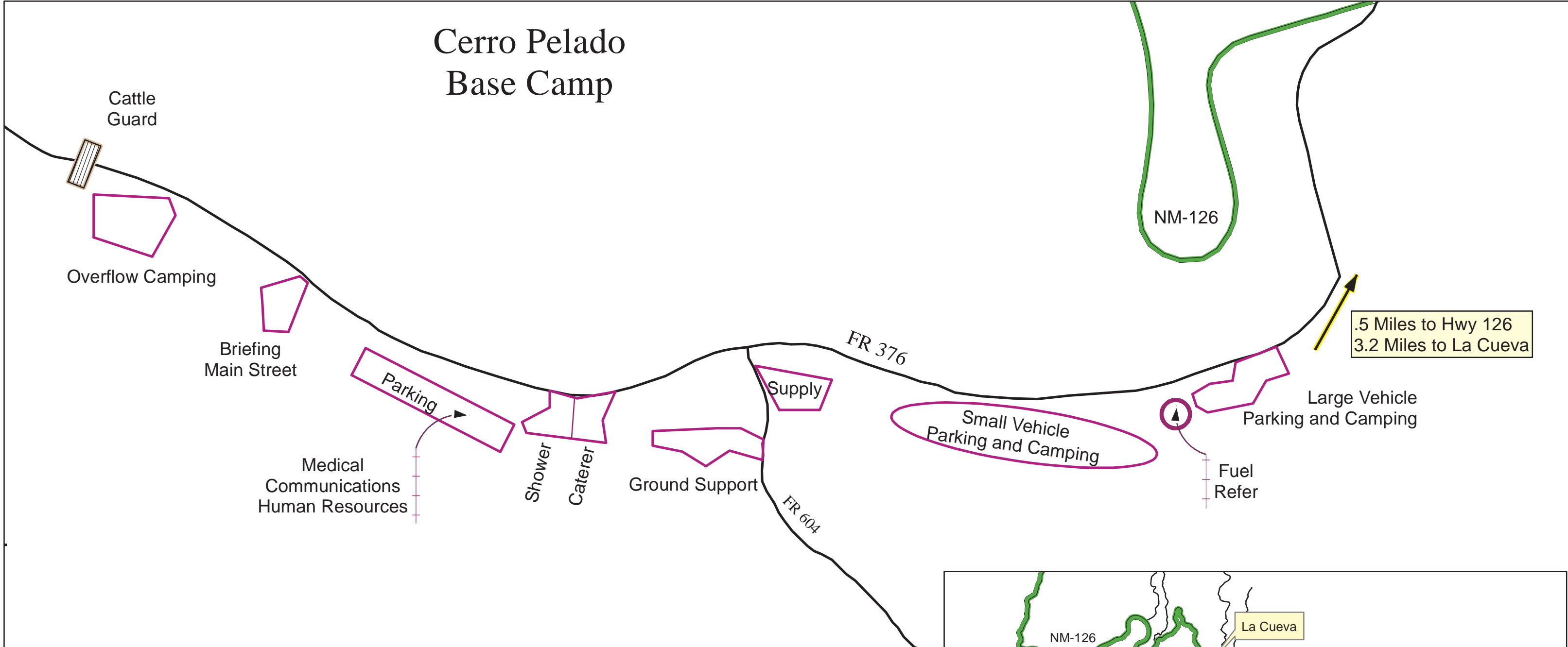
Showers are located at the Base Camp located on Forest Service Road 376 (mile marker 35).

Shower Hours: 0600 to 1200 and 1400 to 2200

All resources will return to their designated room reservation area for Friday night. Resources should pack all belongings and check out of rooms on Saturday morning. All resources will report to Base Camp for camping accommodations after shift on Saturday.

Dinner will be served at the Hummingbird Music Camp on Thursday and Friday. Breakfast and Lunches will be available at the same location Friday and Saturday morning. Saturday's dinner will be at the Base Camp on FS Road 376.

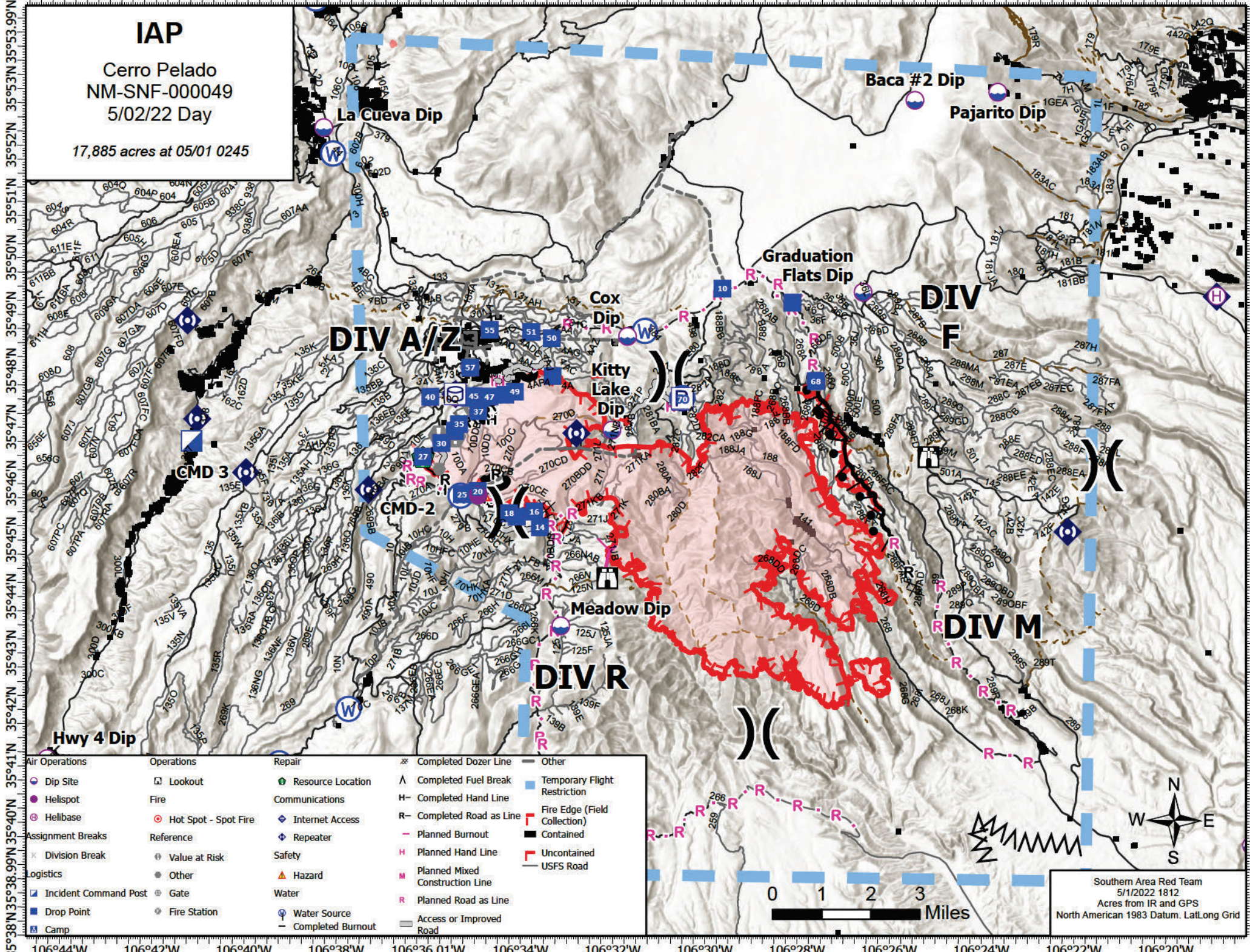
Cerro Pelado Base Camp



0 500 1,000 Feet

0 0.125 0.25 0.5 Miles

106°45'W 106°43'W 106°41'W 106°39'W 106°37'W 106°35'W 106°33'W 106°31'W 106°29'W 106°27'W 106°25'W 106°23'W 106°21'W 106°19'W



IAP
 Cerro Pelado
 NM-SNF-000049
 5/02/22 Day
 17,885 acres at 05/01 0245

35°53'N 35°52'N 35°51'N 35°50'N 35°49'N 35°48'N 35°47'N 35°46'N 35°45'N 35°44'N 35°43'N 35°42'N 35°41'N 35°40'N 35°38.99'N 35°38'N

35°53'N 35°52'N 35°51'N 35°50'N 35°49'N 35°48'N 35°47'N 35°46'N 35°45'N 35°44'N 35°43'N 35°42'N 35°41'N 35°40'N 35°38.99'N 35°38'N

Air Operations	Operations	Repair	Completed Dozer Line	Other
Dip Site	Lookout	Resource Location	Completed Fuel Break	Temporary Flight Restriction
Helispot	Fire	Hot Spot - Spot Fire	Completed Hand Line	Fire Edge (Field Collection)
Helibase	Reference	Internet Access	Planned Burnout	Contained
Assignment Break	Value at Risk	Repeater	Planned Hand Line	Uncontained
Division Break	Other	Hazard	Planned Mixed Construction Line	USFS Road
Logistics	Gate	Water	Planned Road as Line	
Incident Command Post	Fire Station	Water Source	Access or Improved Road	
Drop Point	Completed Burnout			
Camp				

Southern Area Red Team
 5/1/2022 1812
 Acres from IR and GPS
 North American 1983 Datum. LatLong Grid

0 1 2 3 Miles

MEDICAL PLAN (ICS 206 WF)

Controlled Unclassified Information//Basic

1. Incident/Project Name				2. Operational Period						
Cerro Pelado Fire				05/2-3/2022 0700-1900						
2. Medical Aid Stations										
Medical Aid Stations		Location			Advanced Life Support (ALS)					
ERL Medical Trailer		Base Camp			Yes		No			
3. Ambulance Services										
For local 911 resources, call Sandoval County Dispatch (505) 896-7300										
Name		Location		Phone		Advanced Life Support (ALS)				
MED 30 (4WD)		Division A		Cerro Communications		X				
Ambulance 1 (24-hr)		Division Z, DP-25		Cerro Communications		X				
Ambulance 2		Division A DP-40		Cerro Communications		X				
Ambulance 3		Division M		Cerro Communications		X				
Jemez Pueblo Ambulance Service		4535 NM 4, Jemez Pueblo, NM		Sandoval Cty (above)		X				
MED 31		550 Zia Pueblo Road, NM		Sandoval Cty (above)		X				
4. Air Ambulance Services										
Sandoval County Dispatch (505) 896-7300 Air Ambulance A/G Frequency VMed28 155.34 Tx Tone 156.7										
Name		Location			Advanced Life Support (ALS)					
Classic Air Medical		Los Alamos – Night Vision			X					
Tri-State Care Flight		Santa Fe – Night Vision			X					
UNM Lifeguard		Albuquerque – Night Vision			X					
Bernalillo County Sheriff 505-798-7000		A-Star: Day short haul, 24-hour extrication/relocation			X					
5. Hospitals										
Name/Address		GPS Datum – WGS 84 Coordinate Standard		Travel Time Air Gnd		Phone		Helipad Yes No		Level of Care Facility
Los Alamos Medical Center 3917 West Road Los Alamos, NM		Lat:	35 52.91' N	30 min	40 min	(505) 231-2602 Supv (505) 662-4201		X		Level 3 Trauma
		Long:	106 19.13' W							
		VHF:								
University of New Mexico 2211 Lomas Blvd. NE Albuquerque, NM		Lat:	35 05.27' N	30 min	2 hrs	(505) 272-2111		X		Level 1 Trauma Burn Stabilization
		Long:	106 37.11' W							
		VHF:								
Christus St. Vincent Medical Center 455 St. Michael's Drive Santa Fe NM		Lat:	35 39.56' N	30 min	2 hrs	(505) 913-3361		X		Level 3 Trauma
		Long:	105 56.73' W							
		VHF:								
University of Colorado 12605 E. 16th Avenue, 3rd floor, Aurora, CO		Lat:	39 44.56' N	3.5 hrs	7 hrs	(844) 285-4555		X		Burn Center
		Long:	104 50.52' W							
		VHF:								
6. Clinics										
Trinity Urgent Care 1460 Trinity Dr Los Alamos, NM		Open 0900-1845 Every Day (505) 412-6033								

IWI IC Responsibilities:

- Take charge of the scene – inform the Division Supervisor and Communications that you are the IWI IC and establish radio communications (frequencies, channels). Identify the emergency name – Division A medical, etc.
- Assign or begin patient assessment (Medical Incident Report - MIR) and first aid. Request additional medical resources on division/branch or across incident. Transmit MIR patient information to Communications.
- Determine patient transportation through consultation with line medical personnel and Medical Unit Leader. Consider transportation time, risk to personnel, destination facility and available operational resources. If air transport is chosen, implement the plan for alternative transportation in the event aircraft cannot complete the mission. Order transportation resources through Communications as early as possible.
- Notify Communications as resources arrive and any patient status changes. Names of injured or deceased individuals will not be transmitted on the radio.
- Initiate documentation for future investigation; if a line safety officer is available, assign them to lead documentation. Do not move deceased individuals, gear or personal effects except to accomplish rescue work or protect the safety of others. Obtain written documentation of witnesses. The Unit Log, ICS 214, may be used for the initial documentation, but a subsequent narrative will be required.
- As appropriate, conduct an After-Action Review to determine successes, areas to improve and lessons learned.

MEDICAL PLAN (ICS 206 WF)

Controlled Unclassified Information//Basic

7. Division Branch Group	Area Location Capability	
Div A/Z	EMS Responders & Capability:	Med 30 Ambulance (ALS) Dispatch 877-261-4090 Ambulance 1 (ERL) DP-25 William Boyd 720-660-7786 Medic Team 2 (ALS) - Dean Carpenter 708-979-6976
	ETA for Ambulance to Scene:	Air: 40 min. Ground: 30 min.
Div F	EMS Responders & Capability:	REMS 2 (ALS) Cochiti Fire Station - Rick Bostian 479-422-0462 Ambulance 2 (ALS) Arnolndo Rivera 520-431-1611 Medic Team 1 (ALS) - Cody Keller 404-966-3146
	ETA for Ambulance to Scene:	Air: 40 min. Ground: 30 min.
Div M	EMS Responders & Capability:	Ambulance 3 Mike Sheppard 724-366-8300
	ETA for Ambulance to Scene:	Air: 40 min. Ground: 30 mins.
Div R	EMS Responders & Capability:	REMS-1 (ALS) DP-14 Tanner Smith 541-556-9045 Med Team 3 (ALS) - Jeff Molen 318-751-1087
	ETA for Ambulance to Scene:	Air: 40 min. Ground: 30 min.

Structure	EMS Responders & Capability:	<i>None assigned.</i>	
	ETA for Ambulance to Scene:	Air: 40 min. Ground: 30 min.	
Night Ops	EMS Responders & Capability:	Ambulance 1 (ERL) DP-25 Sage Stewart 479-806-0860 Med Team 4 Randale Smith 434-426-8288	
	ETA for Ambulance to Scene:	Air: 40 min. Ground: 1 hr.	
ICP	EMS Responders & Capability:	Fred Adler (EMT), Nick Arnett (EMTF)	
	Equipment Available on Scene:	BLS	
	Medical Emergency #:	(479) 238-6064 or (408) 888-1900	
	ETA for Ambulance to Scene:	Air: 20 min. Ground: 30 min.	
Base Camp	EMS Responders & Capability:	Medical Trailer	
	Equipment Available on Scene:	ALS	
	ETA for Ambulance to Scene:	Air: 35 min. Ground: 45 min.	

8. Prepared By (Medical Unit Leader)	9. Date/Time	10. Reviewed by (Safety Officer)	
Fred Adler, MEDL Nick Arnett, MEDL(t)	5/1/2022 1700	Tony Rivers, SOFR	45/1/2022 1700

MEDICAL PLAN (ICS 206 WF)

Controlled Unclassified Information//Basic

Medical Incident Report

FOR A NON-EMERGENCY INCIDENT, WORK THROUGH CHAIN OF COMMAND TO REPORT AND TRANSPORT INJURED PERSONNEL AS NECESSARY.

FOR A MEDICAL EMERGENCY: IDENTIFY ON SCENE INCIDENT COMMANDER BY NAME AND POSITION AND ANNOUNCE "MEDICAL EMERGENCY" TO INITIATE RESPONSE FROM IMT COMMUNICATIONS/DISPATCH.

Use the following items to communicate situation to communications/dispatch.

1. CONTACT COMMUNICATIONS / DISPATCH (Verify correct frequency prior to starting report)

Ex: "Communications, Div. Alpha. Stand-by for Emergency Traffic."

2. INCIDENT STATUS: Provide incident summary (including number of patients) and command structure.

Ex: "Communications, I have a Red priority patient, unconscious, struck by a falling tree. Requesting air ambulance to Forest Road 1 at (Lat./Long.) This will be the Trout Meadow Medical, IC is TFLD Jones. EMT Smith is providing medical care."

Severity of Emergency / Transport Priority	<input type="checkbox"/> RED / PRIORITY 1 Life or limb threatening injury or illness. Evacuation need is IMMEDIATE <i>Ex: Unconscious, difficulty breathing, bleeding severely, 2^o – 3^o burns more than 4 palm sizes, heat stroke, disoriented.</i> <input type="checkbox"/> YELLOW / PRIORITY 2 Serious Injury or illness. Evacuation may be DELAYED if necessary. <i>Ex: Significant trauma, unable to walk, 2^o – 3^o burns not more than 1-3 palm sizes.</i> <input type="checkbox"/> GREEN / PRIORITY 3 Minor Injury or illness. Non-Emergency transport <i>Ex: Sprains, strains, minor heat-related illness.</i>	
Nature of Injury or Illness & Mechanism of Injury		<i>Brief Summary of Injury or Illness (Ex: Unconscious, Struck by Falling Tree)</i>
Transport Request		<i>Air Ambulance / Short Haul/Hoist Ground Ambulance / Other</i>
Patient Location		<i>Descriptive Location & Lat. / Long. (WGS84)</i>
Incident Name		<i>Geographic Name + "Medical" (Ex: Trout Meadow Medical)</i>
On-Scene Incident Commander		<i>Name of on-scene IC of Incident within an Incident (Ex: TFLD Jones)</i>
Patient Care		<i>Name of Care Provider (Ex: EMT Smith)</i>

3. INITIAL PATIENT ASSESSMENT: Complete this section for each patient as applicable (start with the most severe patient)

Patient Assessment: See IRPG page 106

Treatment:

4. TRANSPORT PLAN:

Evacuation Location (if different): (Descriptive Location (drop point, intersection, etc.) or Lat. / Long.) Patient's ETA to Evacuation Location:

Helispot / Extraction Site Size and Hazards:

5. ADDITIONAL RESOURCES / EQUIPMENT NEEDS:

Example: Paramedic/EMT, Crews, Immobilization Devices, AED, Oxygen, Trauma Bag, IV/Fluid(s), Splints, Rope rescue, Wheeled litter, HAZMAT, Extrication

6. COMMUNICATIONS: Identify State Air/Ground EMS Frequencies and Hospital Contacts as applicable

Function	Channel Name/Number	Receive (RX)	Tone/NAC *	Transmit (TX)	Tone/NAC *
COMMAND					
AIR-TO-GRND					
TACTICAL					

7. CONTINGENCY: Considerations: If primary options fail, what actions can be implemented in conjunction with primary evacuation method? Be thinking ahead.

8. ADDITIONAL INFORMATION: Updates/Changes, etc.

REMEMBER: Confirm ETA's of resources ordered. Act according to your level of training. Be Alert. Keep Calm. Think Clearly. Act Decisively.