



Cerro Pelado

NM-SNF-000049, P3PK47 (0310)

**Operational Period:
Wednesday, May 4, 2022
0700 – May 5, 2022 0700**

Check - In



Avenza Maps



IAP

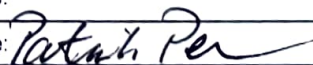


Cerro Pelado Communication Phone
561-527-0804



**SA Red Team
Incident Commander – Steve Parrish**

INCIDENT OBJECTIVES (ICS 202)

1. Incident Name:	2. Operational Period: 0700 - 0700		
CERRO PELADO	Date/Time From: 05/04/2022 0700	WED	Date/Time To: 05/05/2022 0700
3. Objective(s): Management Objectives 1) Protection of human life and safety is the first priority for all actions taken on a wildfire and can overrule all other strategic/management objectives and incident requirements. 2) Base management decisions on meeting objectives while also minimizing the risk of COVID-19 exposures to responders and the public. COVID-19 considerations may alter how you meet goals but should not lead to higher risk tactics. 3) Maintain and strengthen relationships with the Santa Fe National Forest, private landowners, the public, cooperators and partners by providing timely and accurate information. 4) Protect the unique attributes of impacted watersheds through actions that minimize sedimentation and invasive species movement. 5) Minimize impact to cultural resources through consultation with Tribal Leaders and local Forest specialists. Control Objectives 1) Protection of human life and safety is the first priority for all actions taken and shall override all other incident control objectives. Evaluate risk vs. benefit in strategic and tactical planning and only commit operational resources to actions that have the highest probability of success. 2) Keep fire out of Jemez Canyon. 3) Keep fire south of the community SLP and south of state route 4; keep fire west of forest road 289, and Tent Rock Ranch Rd.; keep fire north of Bear Spring Rd; keep fire east of forest road 266 and 271; keep fire north of forest road 270. 4) Minimize retardant impacts to Jemez Natural Recreation Area. 5) Protect values at risk in the Valles Caldera National Preserve including watersheds, visitor and administrative infrastructure, historic structures, cultural resources, and important wildlife habitats. 6) Provide initial attack resources to respond to any new ignitions within the TFR area to limit potential size and growth.			
4. Operational Period Command Emphasis:			
Stop, Think, Discuss then Act, and ensure LCES is in place prior to engaging the fire or Initial Response fire. The Cerro Pelado fire receives a strategic, risk-based response, commensurate with the threats and opportunities, and uses the full spectrum of management actions, that consider fire and fuel conditions, weather, values at risk, and resources available.			
General Situational Awareness:			
<ul style="list-style-type: none"> • Continued low RHs • No predicted precipitation for several days <p>WEATHER DISCUSSION: Unusually early start to fire season. Critical to extreme fire weather for the next several days. Entire area is experiencing extended drought. Please see daily weather forecast for detailed report.</p>			
7. Prepared by:	MARG OLSON	Position/Title:	PLANNING SECTION CHIEF
8. Approved by Incident Commander:	Name: STEVEN PARRISH	Signature: 	
ICS 202	IAP Page	Date/Time:	05/03/2022 1800

ORGANIZATION ASSIGNMENT LIST (ICS 203)

1. Incident Name:		2. Operational Period: 0700 - 0700	
CERRO PELADO		Date/Time From: 05/04/2022 0700 WED	Date/Time To: 05/05/2022 0700 THU
COST UNIT	TRAVIS, DIANE		
9. Prepared By:	Name: MARG OLSON	Position/Title: PLANNING SECTION CHIEF	Signature:
ICS 203	IAP Page	Date/Time: 05/03/2022 1800	



To: All Incident Personnel, Cerro Pelado Fire

As Southern Area National Type I Incident Commander, I am committed to a policy of “zero tolerance” of inappropriate behavior during incident operations. Any form of harassment, discriminatory practices, or disrespectful behavior will not be tolerated. Known or reported acts will be dealt with appropriately.

I am particularly concerned about the perception that alcohol has a place in any of the Incident facilities. It is not appropriate to indulge in alcoholic beverages during any fire assignment.

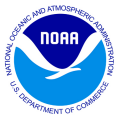
The National Team from the Southern Region has a policy of “NO ALCOHOL” from the time of dispatch until the time of physical release from the Incident. Members of the Team voluntarily comply with this policy; all incident personnel will be expected to do so also.

We endorse, support, and expect an attitude of mutual respect for all Incident personnel and the public we serve. We also, endorse the attitude and work ethic that places “Safety First, every time on every Incident.” We expect nothing less.

/s/Steve Parrish

Incident Commander

SAIMT 1



INCIDENT Weather Forecast



Forecast No: 11
Prediction For: Wednesday
Shift Date: May 04, 2022
Forecast Issued: May 03, 2022 at 1800

Name of Incident: Cerro Pelado Fire
Unit: Santa Fe NF
Incident Meteorologist: Scott Stearns
(208) 577-1617

Discussion: Today, winds will slow below critical thresholds, but remain slightly stronger than the typical diurnal speeds. Temperatures will be several degrees lower than yesterday (down to a few degrees below normal for this time of year). A ridge of high pressure begins building over the region on Thursday leading to warming temperatures and light, terrain driven winds across much of the fire area.

Forecast for Today:

Sky/Weather:

Mostly sunny

	<u>Jemez Springs 8,000'</u>			<u>Cerro Pelado Pk 9,400'</u>		
Max Temperature:	60			53	°F	
Min RH:	14			17	%	
Wind (20 FT):	Inversion breaking around 1000.					
...	W	12		W	15	mph
...	Gusts:	25		Gusts:	25	mph
Haines Index:	4			4		
LAL:	1			1		
Chance of Precipitation:	5			5	%	
Tonight's Min Temperature:	34			27	°F	
Tonight's Max RH:	45			50	%	
Tonight's Wind (20 FT):	Weak inversion setting in around 2000 to 2100. Expect terrain driven winds to be light downslope/downvalley.					
...	DS/DV	5		W	10	mph
...	Gusts:	15		Gusts:	18	mph
Tonight's Haines Index:	4			4		
Tonight's LAL:	1			1		
Tonight's Chnc of Precip:	5			5	%	

Forecast for Thursday:

Sky/Weather:

Mostly sunny

	<u>Jemez Springs 8,000'</u>			<u>Cerro Pelado Pk 9,400'</u>		
Max / Min Temperature:	68	40		62	35	°F
Min / Max RH:	10	30		13	30	%
Wind (20 FT):	Inversion breaking around 0900. Expect terrain driven winds to be relatively light upslope/upvalley.					
...	US/UV	9		W	11	mph
...	Gusts:	22		Gusts:	25	mph
Haines Index:	5			LAL:	1	
				Precip Chance:	0	



Extended Outlook:

A broad ridge of high pressure continues to build into the region leading to some of the warmest temperatures yet experienced on this fire. The forecast remains dry with potential strong winds on Saturday through Monday.

		<u>Max T</u>	<u>Min T</u>	<u>Min RH</u>	<u>Max RH</u>	<u>Ridge Winds @ 1500</u>	<u>Weather</u>
8,600'	Fri:	74	43	9	30	W @ 14 G25	
	Sat:	77	45	8	30	SW @ 20 G35	near-critical conditions
	Sun:	72	42	9	35	SW @ 24 G40	critical conditions likely

If you have weather observations, please provide them to the IMET / FBAN.

FIRE BEHAVIOR FORECAST

FORECAST NUMBER: 11	TYPE OF FIRE: Wildland, Type 1	
FIRE NAME: Cerro Pelado	OPERATIONAL PERIOD: Day Shift	
DATE ISSUED: 5/3/22 TIME ISSUED: 1800	SHIFT DATE: Wednesday May 4, 2022	
UNIT: Santa Fe NF	SIGNED: Alison Coons, FBAN	
WEATHER SUMMARY:	Fire Environment & Danger Information	
<p style="text-align: center;">Local Thresholds – Watch Outs Min RH 8%, Winds 8 Gusts to 20 mph, Temp>70, Heavy Fuels <9%</p> <p style="text-align: center;"><u>Today's Significant Fire Weather:</u> RH of 11%, Winds 15 mph, gusts near 25 mph</p>	 SNF West Pocket Card	 SWCC Fire Danger Page

FIRE BEHAVIOR:

GENERAL:

Weather and fuel conditions will continue to support active fire behavior across the eastern half of the incident and moderate fire behavior

Current Fire Environment Conditions:

Fine Dead Fuel Moisture = 4%, 1,000 Hour Fuel Moisture = 8-10%, Live Shrub Moisture = <82%
 ERC's remain between the 90th and 97th percentile value for this date.

Fire Behavior based on MAXIMUM values for the fuel models shown, exposed fuels on steep slope.

Fuel Model	Rate of Spread	Flame Length
Slash w/ Grass/Shrub	8-30 chains/hour	8-14 feet Head Fire, 1-3 feet Backing Fire
Timber	2-10 chains/hour	3-8 feet

There is potential for spotting distances from 500 feet up to a quarter of a miles
 Probability of Ignition = **70%**

Specific Areas of Concern:

Alpha and Zulu– West and northwest winds allow for the most active part of the division to remain somewhat sheltered by terrain. Expect the fire to continue to back toward Highway 4. If winds begin to channel through the canyon above Kitty Lake Dip, an increase in down slope spread is likely.

Romeo: Fire is expected to continue moving to the south across Oaks Mesa. As the fire moves farther southeast, a reduction in available fuels will aid in slowing overall movement in that direction. Farther west in the division, expect burning operations from the previous day to continue to carry.

Mike: The fire should hang up when it reaches the rock washes and sparse vegetation above Pueblo of Cochiti but continue to move through stringers of mixed conifer in the canyon bottoms. Expect the most activity on the western end of the division.

Fox Trot: Southwest and south winds will continue to support fire spread to the east and north. If the fire crosses Highway 4, expect high spread rates in the Valles Caldera due to heavy grass loading. If the fire crosses east of the caldera into mixed conifer and heavy loads of dead and down and gets established, ground resources should expect very active fire behavior and spotting up to ½ mile.

AIR OPERATIONS:

Aviation resources should be able to fly all day with clear skies and moderated winds.

SAFETY:

Remain situationally aware. Communicate weather observations to remain informed on current weather. Make sure any and all hazards have been identified and eliminated prior to working in an area.

Please send any fire behavior on site weather observations or photos to: alisoncc66@gmail.com 606-260-0526

HEALTH AND SAFETY MESSAGE

“We don’t plan on luck to be safe, we plan on sound risk management and good decisions.....the Red Team

INCIDENT: Cerro Pelado Fire

DATE: Wednesday, May 4th, 2022

Major Hazards & Risks: Driving, Fatigue, Foot Issues/Blisters,

Driving....Are You that person??

Numerous reports of speeding continue to be a concern on this incident....are you that person? Ingress and egress on many roads are extremely narrow, slow down and always maintain a safe traveling distance.

Fatigue: With the recent fire activity on the incident, *duty hours have increased* for many resources. Make sure your work rest ratio and guidelines are being adhered to. *Proper diet and rest* will eliminate the onset of extreme fatigue over extended periods of time.

Blister Avoidance: Boots should fit snug, but not tight. Wear socks that fit and double up to reduce friction on your skin if necessary. Keep your feet clean and wear clean dry socks daily. If any hot spots develop, treat them before they become worse and develop into blisters. Utilize your medical professionals daily to address any issue you may have with blisters.



TELL JOHNSON THAT THE SAFETY OFFICER WOULD LIKE TO
SPEAK WITH HIM...THE SOONER THE BETTER

Human Factors, Barriers to Situation Awareness and Decision Making

Hazardous Attitudes:

- Invincible – This can’t/wouldn’t happen to us
- Anti-authority – Disregard of the team effort
- Impulsive - Do something even if it’s wrong
- Macho - Trying to impress or prove something
- Complacent - Just another routine fire
- Resigned - We can’t make a difference
- Group Think - Afraid to speak up or disagree

Red Team Safety Officers: Tony Rivers, Tommy Hawkins, Brad Lidell, Dave Stone

Division/Group Assignment List (ICS 204 WF)
Controlled Unclassified Information//Basic

1. Incident Name:			3.			
CERRO PELADO			Branch:		Division/Group	
2. Operational Period: 0700 - 0700			I		A/Z	
Date/Time From: 05/04/2022 0700	WED	Date/Time To: 05/05/2022 0700				
4. Operations Personnel						
OPERATIONS CHIEF		P. MYERS, M. DAVIS V. EDGE, C, COOK (T), J. RAMSAY (T)		BRANCH DIRECTOR		HEATH MORTON ANDY PASCARELLA (T)
DIVISION/GROUP SUPERVISOR		WILLIAM RAULERSON		SAFETY		TOMMY HAWKINS
5. Resources Assigned this Period						
Strike Team / Task Force / Resource Designator	LWD	Leader	Number Persons	Drop Off PT./Time	Pick Up PT./Time	
O-106 TFLD	05/10	CHRISTINE WEIR KOETTER	1	BASE CAMP/0700	BASE CAMP/1900	
C-17 HC2 DECANSO CREW 5	05/13	CINDY PETRICH	21	BASE CAMP/0700	BASE CAMP/1900	
E-131 ENG3 SAN JUAN COUNTY	05/09	AARION AUSTIN	3	BASE CAMP/0700	BASE CAMP/1900	
E-129 ENG4 ENGINE 1441 NM-BLM	05/05	FORREST PETERMAN	3	BASE CAMP/0700	BASE CAMP/1900	
E-3 ENG4 ENGINE 304 SUNDANCE	05/07	PETER MUNRO	3	BASE CAMP/0700	BASE CAMP/1900	
E-2 ENG6 DEBEQUE	05/08	VOORHEES	2	BASE CAMP/0700	BASE CAMP/1900	
E-105 ENG6 RAMOS EAGLE	05/08	CORVIN LESTER	3	BASE CAMP/0700	BASE CAMP/1900	
E-114 WTT2 COWBOY	05/07	WYATT LACKMAN	2	BASE CAMP/0700	BASE CAMP/1900	
WTT2 TENDER 26 HEMEZ FIRE				BASE CAMP/0700	BASE CAMP/1900	
O-141 MED 2	05/09	DEAN CARPENTER	2	BASE CAMP/0700	BASE CAMP/1900	
E-59 AMBU	05/10	TYLER GRADY	2	BASE CAMP/0700	BASE CAMP/1900	
6. Control Operations/Work Assignments:						
Task: Continue to provide engine resource presence for the community SLP, and mop up control lines near SLP structures. Hold and mop up A/Z. Continue to brush Hwy 4.						
Purpose: To reduce the fire threat to the community SLP, and keep fire progression east of FS-10. Hold fire north of FS 270.						
End State: Lift evacuations and return residents to community SLP, and fire progression east of FS 10. Hold fire within the identified road system to minimize impact on landscape.						
7. Special Instructions:						
<ul style="list-style-type: none"> Briefing will be held at base camp 0700. Coordinate with READ before ground disturbance. Coordinate with Sandoval County, State Police, and Tribal Nations 						
8. Division/Group Communication Summary						
Function	Channel	RX Frequency N/W	RX Tone/NAC	TX Frequency N/W	TX Tone/NAC	Mode
COMMAND	1	169.7500 N	146.2	167.1000 N	146.2	A
TACTICAL	7	168.2000 N	146.2	168.2000 N	146.2	A
AIR TO GROUND	13	166.8250 N		166.8250 N		A
9. Prepared By (Resource Unit Leader)		Approved By (Planning Section Chief)		Date		Time
BRITTANY PHILLIPS		MISSY FORDER		05/03/2022		1800

Division/Group Assignment List (ICS 204 WF)

Controlled Unclassified Information//Basic

1. Incident Name:		3.	
CERRO PELADO		I	A/Z
2. Operational Period: 0700 - 0700			
Date/Time From: 05/04/2022 0700 WED	Date/Time To: 05/05/2022 0700 THU		
4. Operations Personnel			
OPERATIONS CHIEF	P. MYERS, M. DAVIS V. EDGE, C, COOK (T), J. RAMSAY (T)	BRANCH DIRECTOR	HEATH MORTON ANDY PASCARELLA (T)
DIVISION/GROUP SUPERVISOR	WILLIAM RAULERSON	SAFETY	TOMMY HAWKINS

7. Special Instructions:

- Identify impassable roads with GPS locations in Field Map.
- Do not post photos with archaeological resources that have location information.
- Leave all gates as you found them, either opened or closed. If the gate was closed when you arrived, close it as you leave.
- Identify IA resources off each division to support IA under TFR.
- When responding to IA please use IA group channels. Please see IA Group 205 for appropriate channels.
- ** IN THE EVENT OF AN IWI: CONTACT COMMUNICATIONS ON COMMAND**

8. Division/Group Communication Summary

Function	Channel	RX Frequency N/W	RX Tone/NAC	TX Frequency N/W	TX Tone/NAC	Mode
COMMAND	1	169.7500 N	146.2	167.1000 N	146.2	A
TACTICAL	7	168.2000 N	146.2	168.2000 N	146.2	A
AIR TO GROUND	13	166.8250 N		166.8250 N		A

9. Prepared By (Resource Unit Leader)	Approved By (Planning Section Chief)	Date	Time
BRITTANY PHILLIPS	MISSY FORDER	05/03/2022	1800

Division/Group Assignment List (ICS 204 WF)
Controlled Unclassified Information//Basic

1. Incident Name:			3.			
CERRO PELADO			Branch:		Division/Group	
2. Operational Period: 0700 - 0700			I		F	
Date/Time From: 05/04/2022 0700	WED	Date/Time To: 05/05/2022 0700				
4. Operations Personnel						
OPERATIONS CHIEF		P. MYERS, M. DAVIS V. EDGE, C. COOK (T), J. RAMSAY (T)		BRANCH DIRECTOR		HEATH MORTON ANDY PASCARELLA (T)
DIVISION/GROUP SUPERVISOR		JOEL BURGETT BLAINE MCKINNON (T)		SAFETY		DAVE STONE
5. Resources Assigned this Period						
Strike Team / Task Force / Resource Designator	LWD	Leader	Number Persons	Drop Off PT./Time	Pick Up PT./Time	
C-22.2 TFLD	05/07	NATE DRAGER	1	BASE CAMP/0700	BASE CAMP/1900	
O-300 TFLD (T)	05/17	GARRISON LUPTON	1	BASE CAMP/0700	BASE CAMP/1900	
O-189 STEN	05/15	ORTA, JAMES	1	BASE CAMP/0700	BASE CAMP/1900	
O-184 HEQB	05/14	RUSSELL HAYS	1	BASE CAMP/0700	BASE CAMP/1900	
O-246 HEQB (T)	05/16	MIKE STARR	1	BASE CAMP/0700	BASE CAMP/1900	
C-29 T1 ARAVAIPA IHC	05/17	GREG SMITH	18	BASE CAMP/0700	BASE CAMP/1900	
C-1 T2IA CALIFORNIA 63	05/07	RAY BATRES	20	BASE CAMP/0700	BASE CAMP/1900	
C-13 T2 MOUNTAINEER CONTRACTING	05/09	JUAN PEREZ	20	BASE CAMP/0700	BASE CAMP/1900	
C-12 T2 BIRRUETA	05/08	CRISTIAN JUAREZ	20	BASE CAMP/0700	BASE CAMP/1900	
C-19 T2 PACO#11	05/09	DEREK FINCH	20	BASE CAMP/0700	BASE CAMP/1900	
O-123 SMOD NM MODULE 6	05/07	MATT HEFFLER	4	BASE CAMP/0700	BASE CAMP/1900	
O-199 FMOD FALLER MODULE - UNDERDOG TIMBER FALLING, INC. - FALLER	05/15	DANIEL O'RILEY	3	BASE CAMP/0700	BASE CAMP/1900	
E-5 ENG3 STONE MOUNTAIN PROTECTION	05/05	JOHN DICKERSON	4	BASE CAMP/0700	BASE CAMP/1900	
E-109 ENG4 ARROW FIRE & LAND MANAGEMENT	05/09	STEVE MARROW	3	BASE CAMP/0700	BASE CAMP/1900	
E-107 ENG5 LAPOINT FD	05/09	LANE HARRIS	3	BASE CAMP/0700	BASE CAMP/1900	
E-155 ENG5 LA-7	05/07	LIEMER	3	BASE CAMP/0700	BASE CAMP/1900	
E-141 ENG6 310 DUST CONTROL	05/11	CHAD MORRIS	3	BASE CAMP/0700	BASE CAMP/1900	
E-211 ENG6 DOUBLE D FIRE PROTECTION	05/15	MATTHEW DIMAS	3	BASE CAMP/0700	BASE CAMP/1900	
WTT1 LA T-1		CROCKETT	2	BASE CAMP/0700	BASE CAMP/1900	
E-181 WTS2 DNN ENTERPRISES INC -	05/14	STEVE PIPER	1	BASE CAMP/0700	BASE CAMP/1900	
E-182 WTS2 - DNN ENTERPRISES	05/14	MARK DAUER	1	BASE CAMP/0700	BASE CAMP/1900	
8. Division/Group Communication Summary						
Function	Channel	RX Frequency N/W	RX Tone/NAC	TX Frequency N/W	TX Tone/NAC	Mode
COMMAND	4	171.0625	146.2	162.1875	146.2	A
TACTICAL	6	168.2000 N	146.2	168.2000 N	146.2	A
AIR TO GROUND	13	166.8250 N		166.8250 N		A
9. Prepared By (Resource Unit Leader)		Approved By (Planning Section Chief)		Date	Time	
BRITTANY PHILLIPS		MISSY FORDER		05/03/2022	1800	

Division/Group Assignment List (ICS 204 WF)
Controlled Unclassified Information//Basic

1. Incident Name:			3.			
CERRO PELADO			Branch:		Division/Group	
2. Operational Period: 0700 - 0700			I		F	
Date/Time From: 05/04/2022 0700 WED		Date/Time To: 05/05/2022 0700 THU				
4. Operations Personnel						
OPERATIONS CHIEF		P. MYERS, M. DAVIS V. EDGE, C. COOK (T), J. RAMSAY (T)		BRANCH DIRECTOR		HEATH MORTON ANDY PASCARELLA (T)
DIVISION/GROUP SUPERVISOR		JOEL BURGETT BLAINE MCKINNON (T)		SAFETY		DAVE STONE
5. Resources Assigned this Period						
Strike Team / Task Force / Resource Designator		LWD	Leader	Number Persons	Drop Off PT./Time	Pick Up PT./Time
E-104 DOZ2 CECIL LOGGING		05/10	ROCKY FITHIN	2	BASE CAMP/0700	BASE CAMP/1900
E-101 DOZ3 MOORE'S QUALITY EARTHMOVING		05/11	ERIC BLEVINS	1	BASE CAMP/0700	BASE CAMP/1900
E-128 UTV TYPE 7 LA		05/05	KELLY STERNA	2	BASE CAMP/0700	BASE CAMP/1900
E-264 LANL - MASTICATOR					BASE CAMP/0700	BASE CAMP/1900
E-265 LANL MASTICATOR 2					BASE CAMP/0700	BASE CAMP/1900
O-140 MED 1		05/09	CODY KELLER	2	BASE CAMP/0700	BASE CAMP/1900
E-190 AMBU		05/15	MIKE SHEPPARD	2	BASE CAMP/0700	BASE CAMP/1900
6. Control Operations/Work Assignments:						
<p>Task: Continue structure protection on Division F. Continue mastication along Hwy 4 and FS 289. Continue to hold primary lines along Hwy 4 and alternate lines along FS 289.</p> <p>Purpose: Hold fire west of FS 289.</p> <p>End State: Lessening the footprint of the Cerro Pelado Fire while minimizing the impact to private lands.</p>						
7. Special Instructions:						
<ul style="list-style-type: none"> • Briefing will be held at base camp 0700. • Coordinate with READ before ground disturbance. • Coordinate with Sandoval County, State Police, and Tribal Nations • Identify impassable roads with GPS locations in Field Map. • Do not post photos with archaeological resources that have location information. • Leave all gates as you found them, either opened or closed. If the gate was closed when you arrived, close it as you leave. • Identify IA resources off each division to support IA under TFR. • When responding to IA please use IA group channels. Please see IA Group 205 for appropriate channels. • ** IN THE EVENT OF AN IWI: CONTACT COMMUNICATIONS ON COMMAND 						
8. Division/Group Communication Summary						
Function	Channel	RX Frequency N/W	RX Tone/NAC	TX Frequency N/W	TX Tone/NAC	Mode
COMMAND	4	171.0625	146.2	162.1875	146.2	A
TACTICAL	6	168.2000 N	146.2	168.2000 N	146.2	A
AIR TO GROUND	13	166.8250 N		166.8250 N		A
9. Prepared By (Resource Unit Leader)			Approved By (Planning Section Chief)		Date	Time
BRITTANY PHILLIPS			MISSY FORDER		05/03/2022	1800

Division/Group Assignment List (ICS 204 WF)
Controlled Unclassified Information//Basic

1. Incident Name:			3.			
CERRO PELADO			Branch:		Division/Group	
2. Operational Period: 0700 - 0700			I		M	
Date/Time From: 05/04/2022 0700 WED		Date/Time To: 05/05/2022 0700 THU				
4. Operations Personnel						
OPERATIONS CHIEF		P. MYERS, M. DAVIS V. EDGE, C. COOK (T), J. RAMSAY (T)		BRANCH DIRECTOR		HEATH MORTON ANDY PASCARELLA
DIVISION/GROUP SUPERVISOR		MIKE WARD		SAFETY		
5. Resources Assigned this Period						
Strike Team / Task Force / Resource Designator		LWD	Leader	Number Persons	Drop Off PT./Time	Pick Up PT./Time
C-23 T2IA DIAMOND FIRE		05/15	LARRY ECKELMAN	20	COCHITI FOB/0700	COCHITI FOB/1900
C-25 T2IA ZUNI		05/11	RICKEY BOOQUA	19	COCHITI FOB/0700	COCHITI FOB/1900
C-26 T2IA PATRICK		05/06	JOSH CHILES	20	COCHITI FOB/0700	COCHITI FOB/1900
C-28 T2 MOUNTAINEER		05/17	WENCESLAO HARO- MIJARES	20	COCHITI FOB/0700	COCHITI FOB/1900
E-179 ENG3 DEER MOUNTAIN FPD		05/15	PHIL STEVENS	4	COCHITI FOB/0700	COCHITI FOB/1900
E-173 ENG6 - LATHAN/LUERAS		05/15	DAVID KEMPTON	6	COCHITI FOB/0700	COCHITI FOB/1900
E-168 DOZ2 FUEGO		05/14	GEORGE BEEN	2	COCHITI FOB/0700	COCHITI FOB/1900
E-169 DOZ2 SIERRA VALLEY		05/14	CORLEY HENDERSON	2	COCHITI FOB/0700	COCHITI FOB/1900
E-62 AMBU		05/09	ARNOLDO RIVERA	2	COCHITI FOB/0700	COCHITI FOB/1900
E-203 AMBU		05/17	LISA AXEL	2	COCHITI FOB/0700	COCHITI FOB/1900
6. Control Operations/Work Assignments:						
Task: Continue improving and prepping FS 289 as well as dozer and handlines on Cochiti tribal lands.						
Purpose: Limit fire spread on tribal lands using natural barriers and road systems to lessen impacts to cultural and natural resources.						
End State: Lessen the footprint of the Cerro Pelado Fire while minimizing the impacts on tribal lands.						
7. Special Instructions:						
<ul style="list-style-type: none"> Briefing will be held at base camp 0700. Coordinate with READ before ground disturbance. Coordinate with Sandoval County, State Police, and Tribal Nations Identify impassable roads with GPS locations in Field Map. Do not post photos with archaeological resources that have location information. Leave all gates as you found them, either opened or closed. If the gate was closed when you arrived, close it as you leave. 						
8. Division/Group Communication Summary						
Function	Channel	RX Frequency N/W	RX Tone/NAC	TX Frequency N/W	TX Tone/NAC	Mode
COMMAND	4	171.0625	146.2	162.1875	146.2	A
TACTICAL	11	166.7750 N	146.2	166.7750 N	146.2	A
AIR TO GROUND	13	166.8250 N		166.8250 N		A
9. Prepared By (Resource Unit Leader)			Approved By (Planning Section Chief)		Date	Time
BRITTANY PHILLIPS			MISSY FORDER		05/03/2022	1800

Division/Group Assignment List (ICS 204 WF)

Controlled Unclassified Information//Basic

1. Incident Name:		3.	
CERRO PELADO		I	M
2. Operational Period: 0700 - 0700			
Date/Time From: 05/04/2022 0700 WED	Date/Time To: 05/05/2022 0700 THU		
4. Operations Personnel			
OPERATIONS CHIEF	P. MYERS, M. DAVIS V. EDGE, C. COOK (T), J. RAMSAY (T)	BRANCH DIRECTOR	HEATH MORTON ANDY PASCARELLA
DIVISION/GROUP SUPERVISOR	MIKE WARD	SAFETY	

7. Special Instructions:

- Identify IA resources off each division to support IA under TFR.
- When responding to IA please use IA group channels. Please see IA Group 205 for appropriate channels.
- ** IN THE EVENT OF AN IWI: CONTACT COMMUNICATIONS ON COMMAND**

8. Division/Group Communication Summary

Function	Channel	RX Frequency N/W	RX Tone/NAC	TX Frequency N/W	TX Tone/NAC	Mode
COMMAND	4	171.0625	146.2	162.1875	146.2	A
TACTICAL	11	166.7750 N	146.2	166.7750 N	146.2	A
AIR TO GROUND	13	166.8250 N		166.8250 N		A

9. Prepared By (Resource Unit Leader)	Approved By (Planning Section Chief)	Date	Time
BRITTANY PHILLIPS	MISSY FORDER	05/03/2022	1800

Division/Group Assignment List (ICS 204 WF)

Controlled Unclassified Information//Basic

1. Incident Name:				3.			
CERRO PELADO				I		O	
2. Operational Period: 0700 - 0700							
Date/Time From: 05/04/2022 0700 WED		Date/Time To: 05/05/2022 0700 THU					
4. Operations Personnel							
OPERATIONS CHIEF		P. MYERS, M. DAVIS V. EDGE, C. COOK (T), J. RAMSAY		BRANCH DIRECTOR		HEATH MORTON	
DIVISION/GROUP SUPERVISOR							
5. Resources Assigned this Period							
Strike Team / Task Force / Resource Designator		LWD	Leader	Number Persons	Drop Off PT./Time	Pick Up PT./Time	
6. Control Operations/Work Assignments:							
7. Special Instructions:							
<ul style="list-style-type: none"> Briefing will be held at base camp 0700. Coordinate with READ before ground disturbance. Coordinate with Sandoval County, State Police, and Tribal Nations Identify impassable roads with GPS locations in Field Map. Do not post photos with archaeological resources that have location information. Leave all gates as you found them, either opened or closed. If the gate was closed when you arrived, close it as you leave. Identify IA resources off each division to support IA under TFR. When responding to IA please use IA group channels. Please see IA Group 205 for appropriate channels. ** IN THE EVENT OF AN IWI: CONTACT COMMUNICATIONS ON COMMAND 							
8. Division/Group Communication Summary							
Function	Channel	RX Frequency N/W	RX Tone/NAC	TX Frequency N/W	TX Tone/NAC	Mode	
COMMAND							
TACTICAL							
LOGISTICS							
AIR TO GROUND							
9. Prepared By (Resource Unit Leader)			Approved By (Planning Section Chief)			Date	Time

Division/Group Assignment List (ICS 204 WF)
Controlled Unclassified Information//Basic

1. Incident Name:			3.			
CERRO PELADO			Branch:		Division/Group	
2. Operational Period: 0700 - 0700			I		R	
Date/Time From: 05/04/2022 0700 WED		Date/Time To: 05/05/2022 0700 THU				
4. Operations Personnel						
OPERATIONS CHIEF		P. MYERS, M. DAVIS V. EDGE, C. COOK (T), J. RAMSAY (T)		BRANCH DIRECTOR		
DIVISION/GROUP SUPERVISOR		FRANK ALVES LUKE HELFENSTIEN (T)		SAFETY		
				HEATH MORTON ANDY PASCARELLA (T) BRAD LIDELL		
5. Resources Assigned this Period						
Strike Team / Task Force / Resource Designator		LWD	Leader	Number Persons	Drop Off PT./Time	Pick Up PT./Time
C-7 T1 MORMON LAKE IHC		05/08	SARA SWEENEY	21	BASE CAMP/0700	BASE CAMP/1900
C-14 T2IA TAYLOR		05/08	VERNON JACKSON	19	BASE CAMP/0700	BASE CAMP/1900
C-9 T2 ROCHA		05/08	JORGE DURAN	20	BASE CAMP/0700	BASE CAMP/1900
C-18 T2 GFP		05/09	JOHN FITTS	20	BASE CAMP/0700	BASE CAMP/1900
E-176 ENG3 CA-SHF 311		05/15	MATTHEW PUCKETT	5	BASE CAMP/0700	BASE CAMP/1900
E-106 ENG6 GREY WILDLAND		05/09	JAKE WARDEN	3	BASE CAMP/0700	BASE CAMP/1900
E-174 ENG6 PINO		05/15	DARIN PINO	3	BASE CAMP/0700	BASE CAMP/1900
E-9 WTT2 TOUGH EQUIPMENT		05/09	JOHN CULTRIP	1	BASE CAMP/0700	BASE CAMP/1900
E-210 WTT2 LANE		05/16	DAVID LANE	2	BASE CAMP/0700	BASE CAMP/1900
E-103 DOZ2 WEAVER GRADING		05/09	KEVIN GAINES	2	BASE CAMP/0700	BASE CAMP/1900
E-102 DOZ3 BALDWIN FORESTRY		05/11	DAVID BALDWIN	2	BASE CAMP/0700	BASE CAMP/1900
E-151 GRD2 GM EMULSIONS		05/12	ERIC GIRON	1	BASE CAMP/0700	BASE CAMP/1900
E-153 UTV					BASE CAMP/0700	BASE CAMP/1900
O-17 REAF		05/07	BECKY BAISDEN	1	BASE CAMP/0700	BASE CAMP/1900
O-117 REAF		05/08	LISA THOMPSON	1	BASE CAMP/0700	BASE CAMP/1900
O-99 REMS		05/08	TANNER SMITH	4	BASE CAMP/0700	BASE CAMP/1900
O-131 MED 3		05/09	JEFFERY MOLEN	2	BASE CAMP/0700	BASE CAMP/1900
6. Control Operations/Work Assignments:						
Task: Continue establishing primary lines south to the Pueblo tribal lands. Purpose: Keep fire in 2011 Los Conchas fire footprint. End State: Lessening the foot print of the Cerro Pelado fire while minimizing the impact to private lands.						
7. Special Instructions:						
8. Division/Group Communication Summary						
Function	Channel	RX Frequency N/W	RX Tone/NAC	TX Frequency N/W	TX Tone/NAC	Mode
COMMAND	2	169.5375 N	146.2	164.7125 N	146.2	A
TACTICAL	9	168.2500 N	146.2	168.2500 N	146.2	A
AIR TO GROUND	13	166.8250 N		166.8250 N		A
9. Prepared By (Resource Unit Leader)			Approved By (Planning Section Chief)		Date	Time
BRITTANY PHILLIPS			MISSY FORDER		05/03/2022	1800

Division/Group Assignment List (ICS 204 WF)
Controlled Unclassified Information//Basic

1. Incident Name:				3.			
CERRO PELADO				Branch:		Division/Group	
2. Operational Period: 0700 - 0700				I		R	
Date/Time From: 05/04/2022 0700 WED		Date/Time To: 05/05/2022 0700 THU					
4. Operations Personnel							
OPERATIONS CHIEF		P. MYERS, M. DAVIS V. EDGE, C. COOK (T), J. RAMSAY (T)		BRANCH DIRECTOR		HEATH MORTON ANDY PASCARELLA (T)	
DIVISION/GROUP SUPERVISOR		FRANK ALVES LUKE HELFENSTIEN (T)		SAFETY		BRAD LIDELL	
7. Special Instructions:							
<ul style="list-style-type: none"> • Briefing will be held at base camp 0700. • Coordinate with READ before ground disturbance. • Coordinate with Sandoval County, State Police, and Tribal Nations • Identify impassable roads with GPS locations in Field Map. • Do not post photos with archaeological resources that have location information. • Leave all gates as you found them, either opened or closed. If the gate was closed when you arrived, close it as you leave. • Identify IA resources off each division to support IA under TFR. • When responding to IA please use IA group channels. Please see IA Group 205 for appropriate channels. • ** IN THE EVENT OF AN IWI: CONTACT COMMUNICATIONS ON COMMAND 							
8. Division/Group Communication Summary							
Function	Channel	RX Frequency N/W	RX Tone/NAC	TX Frequency N/W	TX Tone/NAC	Mode	
COMMAND	2	169.5375 N	146.2	164.7125 N	146.2	A	
TACTICAL	9	168.2500 N	146.2	168.2500 N	146.2	A	
AIR TO GROUND	13	166.8250 N		166.8250 N		A	
9. Prepared By (Resource Unit Leader)			Approved By (Planning Section Chief)			Date	Time
BRITTANY PHILLIPS			MISSY FORDER			05/03/2022	1800

Division/Group Assignment List (ICS 204 WF)
Controlled Unclassified Information//Basic

1. Incident Name:			3.			
CERRO PELADO			Branch:		Division/Group	
2. Operational Period: 0700 - 0700			I		STRUCTURE	
Date/Time From: 05/04/2022 0700	WED	Date/Time To: 05/05/2022 0700				
4. Operations Personnel						
OPERATIONS CHIEF		P. MYERS, M. DAVIS V. EDGE, C. COOK (T), J. RAMSAY (T)		BRANCH DIRECTOR		HEATH MORTON ANDY PASCARELLA (T)
DIVISION/GROUP SUPERVISOR		CRAIG ROBERTSON				
5. Resources Assigned this Period						
Strike Team / Task Force / Resource Designator		LWD	Leader	Number Persons	Drop Off PT./Time	Pick Up PT./Time
6. Control Operations/Work Assignments:						
<p>Task: Identify structures threatened by the Cerro Pelado wildfire and develop a structure protection plan in coordination with the local cooperating fire agencies. Continue structure protection on Pueblo Cochiti and Cochiti Lake.</p> <p>Purpose: Triage and protect all structures identified for structure protection needs.</p> <p>End State: Threat to identified structures has been reduced as much as practical.</p>						
7. Special Instructions:						
<ul style="list-style-type: none"> • Briefing will be held at base camp 0700. • Coordinate with READ before ground disturbance. • Coordinate with Sandoval County, State Police, and Tribal Nations • Identify impassable roads with GPS locations in Field Map. • Do not post photos with archaeological resources that have location information. • Leave all gates as you found them, either opened or closed. If the gate was closed when you arrived, close it as you leave. • Identify IA resources off each division to support IA and TFR. • When responding to IA please use IA group channels. Please see IA Group 205 for appropriate channels. • ** IN THE EVENT OF AN IWI: CONTACT COMMUNICATIONS ON COMMAND 						
8. Division/Group Communication Summary						
Function	Channel	RX Frequency N/W	RX Tone/NAC	TX Frequency N/W	TX Tone/NAC	Mode
COMMAND	1	169.7500 N	146.2	167.1000 N	146.2	A
COMMAND	2	169.5375 N	146.2	164.7125 N	146.2	A
COMMAND	4	171.0625	146.2	162.1875	146.2	A
TACTICAL	8	168.6000 N	146.2	168.6000 N	146.2	A
AIR TO GROUND	13	166.8250 N		166.8250 N		A
9. Prepared By (Resource Unit Leader)			Approved By (Planning Section Chief)		Date	Time
BRITTANY PHILLIPS			MISSY FORDER		05/03/2022	1800

Division/Group Assignment List (ICS 204 WF)
Controlled Unclassified Information//Basic

1. Incident Name:				3.		
CERRO PELADO				Branch: I	Division/Group IA	
2. Operational Period: 0700 - 0700						
Date/Time From: 05/04/2022 0700 WED		Date/Time To: 05/05/2022 0700 THU				
4. Operations Personnel						
OPERATIONS CHIEF		P. MYERS, M. DAVIS V. EDGE, C. COOK (T), J. RAMSAY (T)		BRANCH DIRECTOR		HEATH MORTON ANDY PASCARELLA (T)
DIVISION/GROUP SUPERVISOR		KRIS SCHROEDER		SAFETY		TOMMY HAWKINS
5. Resources Assigned this Period						
Strike Team / Task Force / Resource Designator	LWD	Leader	Number Persons	Drop Off PT./Time	Pick Up PT./Time	
O-108 TFLD	05/11	WILL BERNARD	1	BASE CAMP/0700	BASE CAMP/1900	
C-3 T2 BLUE MOUNTAIN	05/10	JORGE PEREZ	20	BASE CAMP/0700	BASE CAMP/1900	
E-111 ENG3 MISSOULA CITY FIRE DEPT	05/09	RANDAL THORPE	3	BASE CAMP/0700	BASE CAMP/1900	
E-130 ENG3 COCONINO	05/06	JOEL PRESMYK	5	BASE CAMP/0700	BASE CAMP/1900	
E-177 ENG3 376	05/14	BRIAN HENDRICKS	6	BASE CAMP/0700	BASE CAMP/1900	
ENG4 ENGINE 431 SNF				BASE CAMP/0700	BASE CAMP/1900	
E-108 ENG6 HART VENTURES	05/11	KYLE COLTEN	3	BASE CAMP/0700	BASE CAMP/1900	
E-140 ENG6 THE GENERAL	05/11	PAUL ANDERSON	3	BASE CAMP/0700	BASE CAMP/1900	
E-142 ENG6 MT-BDF	05/05	GORDON WEGLEY	4	BASE CAMP/0700	BASE CAMP/1900	
E-143 ENG6	05/10	AUSTIN STOVER	2	BASE CAMP/0700	BASE CAMP/1900	
E-144 ENG6 GUNNISON FPD	05/11	BEN BRACK	4	BASE CAMP/0700	BASE CAMP/1900	
E-150 ENG6 SANDOVAL COUNTY FD BRUSH 22	05/10	HARRIS TOYA	3	BASE CAMP/0700	BASE CAMP/1900	
E-212 ENG6 MARTINEZ	05/16	KEN ARINGDALE	3	BASE CAMP/0700	BASE CAMP/1900	
E-146 WTT1 B&G FORESTRY	05/05	BILL WEST	2	BASE CAMP/0700	BASE CAMP/1900	
E-113 WTS2 BIG CEDAR	05/10	BEN ANDERBERG	1	BASE CAMP/0700	BASE CAMP/1900	
E-199 WTS2 WATERBOYZ	05/16	ANGEL BARTON	1	BASE CAMP/0700	BASE CAMP/1900	
E-166 DOZ2 KIT CONTRACTING	05/14	CHRISTOPHER BOTTOMLY	2	BASE CAMP/0700	BASE CAMP/1900	
E-180 DOZ3	05/14	GREG GERSTER	2	BASE CAMP/0700	BASE CAMP/1900	
O-202 SOFR	05/15	LANCE DELGADO	1	BASE CAMP/0700	BASE CAMP/1900	
8. Division/Group Communication Summary						
Function	Channel	RX Frequency N/W	RX Tone/NAC	TX Frequency N/W	TX Tone/NAC	Mode
COMMAND	1	169.7500 N	146.2	167.1000 N	146.2	A
COMMAND	2	169.5375 N	146.2	164.7125 N	146.2	A
COMMAND	4	171.0625	146.2	162.1875	146.2	A
TACTICAL	10	166.7250 N	146.2	166.7250 N	146.2	A
AIR TO GROUND	12	168.3125 N		168.3125 N		A
9. Prepared By (Resource Unit Leader)			Approved By (Planning Section Chief)		Date	Time
BRITTANY PHILLIPS			MISSY FORDER		05/03/2022	1800

Division/Group Assignment List (ICS 204 WF)

Controlled Unclassified Information//Basic

1. Incident Name:				3.			
CERRO PELADO				I		IA	
2. Operational Period: 0700 - 0700							
Date/Time From: 05/04/2022 0700		Date/Time To: 05/05/2022 0700					
WED		THU					
4. Operations Personnel							
OPERATIONS CHIEF		P. MYERS, M. DAVIS V. EDGE, C. COOK (T), J. RAMSAY (T)		BRANCH DIRECTOR		HEATH MORTON ANDY PASCARELLA (T)	
DIVISION/GROUP SUPERVISOR		KRIS SCHROEDER		SAFETY		TOMMY HAWKINS	
6. Control Operations/Work Assignments:							
Task: Ready stand-by for initial attack inside TFR and as requested by cooperators.							
Purpose: Provide initial attack support to assigned response area.							
End State: Provide initial attack support for the TFR and surrounding cooperators.							
7. Special Instructions:							
<ul style="list-style-type: none"> Briefing will be held at base camp 0700. Provide support for the Freeloove Fire on request of agency. Coordinate with READ before ground disturbance. Coordinate with Sandoval County, State Police, and Tribal Nations Identify impassable roads with GPS locations in Field Map. Do not post photos with archaeological resources that have location information. Leave all gates as you found them, either opened or closed. If the gate was closed when you arrived, close it as you leave. Identify IA resources off each division to support IA under TFR. When responding to IA please use IA group channels. Please see IA Group 205 for appropriate channels. ** IN THE EVENT OF AN IWI: CONTACT COMMUNICATIONS ON COMMAND 							
8. Division/Group Communication Summary							
Function	Channel	RX Frequency N/W	RX Tone/NAC	TX Frequency N/W	TX Tone/NAC	Mode	
COMMAND	1	169.7500 N	146.2	167.1000 N	146.2	A	
COMMAND	2	169.5375 N	146.2	164.7125 N	146.2	A	
COMMAND	4	171.0625	146.2	162.1875	146.2	A	
TACTICAL	10	166.7250 N	146.2	166.7250 N	146.2	A	
AIR TO GROUND	12	168.3125 N		168.3125 N		A	
9. Prepared By (Resource Unit Leader)			Approved By (Planning Section Chief)			Date	Time
BRITTANY PHILLIPS			MISSY FORDER			05/03/2022	1800

Division/Group Assignment List (ICS 204 WF)
Controlled Unclassified Information//Basic

1. Incident Name:			3.			
CERRO PELADO			Branch:		Division/Group	
2. Operational Period: 0700 - 0700			II		NIGHT	
Date/Time From: 05/04/2022 0700	WED	Date/Time To: 05/05/2022 0700				
4. Operations Personnel						
OPERATIONS CHIEF		P. MYERS, M. DAVIS V. EDGE, C. COOK (T), J.RAMSAY (T)		BRANCH DIRECTOR		CORDELL TAYLOR
DIVISION/GROUP SUPERVISOR		AARON EDWARDS				
5. Resources Assigned this Period						
Strike Team / Task Force / Resource Designator	LWD	Leader	Number Persons	Drop Off PT./Time	Pick Up PT./Time	
C-22.1 TFLD	05/07	TIM MEMMER	1	BASE CAMP/1900	BASE CAMP/0700	
C-22 HC1 CARSON HOTSHOTS IHC	05/07	NICOLL, CORDOVA, GALVAN	18	BASE CAMP/1900	BASE CAMP/0700	
C-24 T2 TORRES	05/08	ISMAEL LOPEZ	20	BASE CAMP/1900	BASE CAMP/0700	
E-110 ENG3 OUTBACK FIREFIGHTING	05/10	JIM REILLY	3	BASE CAMP/1900	BASE CAMP/0700	
E-175 ENG4 FIREANT	05/15	CHRIS ANTHIS	3	BASE CAMP/1900	BASE CAMP/0700	
E-170 ENG5 ELEPHANT BUTTE	05/14	RUSSELL THRUN	3	BASE CAMP/1900	BASE CAMP/0700	
E-1 ENG6 CARBONDALE	05/07	SCOTT EVANS	3	BASE CAMP/1900	BASE CAMP/0700	
E-171 ENG6 WILDLAND FIRE SERVICES	05/15	DAVID HOGREFE	3	BASE CAMP/1900	BASE CAMP/0700	
E-178 ENG6 UT	05/13	CHRIS LEWIS	2	BASE CAMP/1900	BASE CAMP/0700	
E-167 DOZ2 NORTHSTATE HEAVY EQUIPMENT	05/16	JORDAN NICKELL	2	BASE CAMP/1900	BASE CAMP/0700	
E-191 MED 4	05/14	M COUTRNEY	2	BASE CAMP/1900	BASE CAMP/0700	
E-59 AMBU	05/10	SAGE STEWART	2	BASE CAMP/1900	BASE CAMP/0700	
E-190 AMBU	05/15	JACKSON PIXLEY	2	BASE CAMP/1900	BASE CAMP/0700	
O-200 SOF2	05/15	JIM GRANT	1	BASE CAMP/1900	BASE CAMP/0700	
6. Control Operations/Work Assignments:						
Task: Patrol and monitor along fire lines focusing on values at risk and critical areas of concern as directed from day shift. Engage as needed along fire perimeter.						
Purpose: Ensure safety of fire fighters and protect values at risk						
End State: Safety and values at risk are protected. Priority areas of the fire are secured to provide a successful transition with day shift.						
7. Special Instructions:						
8. Division/Group Communication Summary						
Function	Channel	RX Frequency N/W	RX Tone/NAC	TX Frequency N/W	TX Tone/NAC	Mode
COMMAND	1	169.7500 N	146.2	167.1000 N	146.2	A
COMMAND	2	169.5375 N	146.2	164.7125 N	146.2	A
COMMAND	4	171.0625	146.2	162.1875	146.2	A
TACTICAL	11	166.7750 N	146.2	166.7750 N	146.2	A
9. Prepared By (Resource Unit Leader)			Approved By (Planning Section Chief)		Date	Time
BRITTANY PHILLIPS			MISSY FORDER		05/03/2022	1800

Division/Group Assignment List (ICS 204 WF)
Controlled Unclassified Information//Basic

1. Incident Name:		3.	
CERRO PELADO		Branch: II	Division/Group NIGHT
2. Operational Period: 0700 - 0700			
Date/Time From: 05/04/2022 0700	WED	Date/Time To: 05/05/2022 0700	THU
4. Operations Personnel			
OPERATIONS CHIEF	P. MYERS, M. DAVIS V. EDGE, C. COOK (T), J.RAMSAY (T)	BRANCH DIRECTOR	CORDELL TAYLOR
DIVISION/GROUP SUPERVISOR	AARON EDWARDS		

7. Special Instructions:


- Briefing will be held at base camp 0700.
- Coordinate with READ before ground disturbance.
- Coordinate with Sandoval County, State Police, and Tribal Nations
- Identify impassable roads with GPS locations in Field Map.
- Do not post photos with archaeological resources that have location information.
- Leave all gates as you found them, either opened or closed. If the gate was closed when you arrived, close it as you leave.
- Identify IA resources off each division to support IA under TFR.
- When responding to IA please use IA group channels. Please see IA Group 205 for appropriate channels.
- ** IN THE EVENT OF AN IWI: CONTACT COMMUNICATIONS ON COMMAND

8. Division/Group Communication Summary						
Function	Channel	RX Frequency N/W	RX Tone/NAC	TX Frequency N/W	TX Tone/NAC	Mode
COMMAND	1	169.7500 N	146.2	167.1000 N	146.2	A
COMMAND	2	169.5375 N	146.2	164.7125 N	146.2	A
COMMAND	4	171.0625	146.2	162.1875	146.2	A
TACTICAL	11	166.7750 N	146.2	166.7750 N	146.2	A
9. Prepared By (Resource Unit Leader)		Approved By (Planning Section Chief)		Date	Time	
BRITTANY PHILLIPS		MISSY FORDER		05/03/2022	1800	

INCIDENT RADIO COMMUNICATIONS PLAN I-205				1. INCIDENT NAME			2. DATE/TIME PREPARED			3. OPERATIONAL PERIOD DATE/TIME		
				Cerro Pelado Main Group			5/03/2022 1700			05/04/22 0700 - 05/05/22 0700		
4. BASIC RADIO CHANNEL UTILIZATION												
Ch #	Function	Channel Name	Assignment	RX Freq	N/W	RX Tone/NAC	TX Freq	N/W	TX Tone/NAC	Mode Analog (A) Digital (D) Mixed (M)	Remarks	
1	Command	CMD 1	DIV A/Z	169.7500	N	146.2	167.1000	N	146.2	A	CERRO PELADO	
2	Command	CMD 2	DIV R	169.5375	N	146.2	164.7125	N	146.2	A	ROAD 10/270 INTERSECTION	
3	Command	CMD 3	ICP	170.4125	N	146.2	165.9625	N	146.2	A	135 ROAD	
4	Command	CMD 4	DIV F/M	171.0625	N	146.2	162.1875	n	146.2	A	St Peter's Dome	
5		UNASSIGNED										
6	Tactical	TAC 1	DIV F	168.0500	N	146.2	168.0500	N	146.2	A		
7	Tactical	TAC 2	DIV A/Z	168.2000	N	146.2	168.2000	N	146.2	A		
8	Tactical	TAC 3	STRUCTURAL PROTECTION	168.6000	N	146.2	168.6000	N	146.2	A		
9	Tactical	TAC 4	DIV R	168.2500	N	146.2	168.2500	N	146.2	A		
10	Tactical	TAC 5	IA	166.7250	N	146.2	166.7250	N	146.2	A		
11	Tactical	TAC 6	DIV M	166.7750	N	146.2	166.7750	N	146.2	A	Night Shift	
12	Air Ground	A/G 51		168.3125	N		168.3125	N		A	Initial Attack / Local Air to Ground	
13	Air Ground	A/G PRI		166.8250	N		166.8250	N		A		
14	Air Ground	A/G SEC		168.7375	N		168.7375	N		A		
15	Medivac	VMED 28		155.3400	N		155.3400	N	156.7	A	Air Ambulance	
16	AIRGUARD			168.6250	N		168.6250	N	110.9	A		
5. Special Instructions:		USE HUMAN REPEATER WHEN NECESSARY. IF ASSIGNED COMMAND CHANNEL DOES NOT WORK TRY THE OTHER ONE.										
6. I-205 Prepared By: Communications Unit Leader			Name: Barry Stearns					Signature: <i>Barry H Stearns</i>				

INCIDENT RADIO COMMUNICATIONS PLAN I-205				1. INCIDENT NAME			2. DATE/TIME PREPARED			3. OPERATIONAL PERIOD DATE/TIME		
				Cerro Pelado IA Group			5/03/2022 1600			05/04/22 0700 - 05/05/22 0700		
4. BASIC RADIO CHANNEL UTILIZATION												
Ch #	Function	Channel Name	Assignment	RX Freq	N/W	RX Tone/NAC	TX Freq	N/W	TX Tone/NAC	Mode Analog (A) Digital (D) Mixed (M)	Remarks	
1	Command	CMD 1	DIV A/Z	169.7500	N	146.2	167.1000	N	146.2	A	CERRO PELADO	
2	Command	CMD 2	DIV R	169.5375	N	146.2	164.7125	N	146.2	A	ROAD 10/270 INTERSECTION	
3	Command	CMD 3	ICP	170.4125	N	146.2	165.9625	N	146.2	A	135 ROAD	
4	Command	CMD 4	DIV F/M	171.0625	N	146.2	162.1875	n	146.2	A	St Peter's Dome	
5		UNASSIGNED										
6	Tactical	TAC 5	IA	166.7250	N	146.2	166.7250	N	146.2	A		
7	Dispatch	PELADO	IA	172.3000	N	NONE	165.0125	N	131.8	A	Santa Fe Dispatch	
8	Tactical	R3 TAC 1	IA	167.5500	N	NONE	167.5500	N	NONE	A		
9	Tactical	R3 TAC 2	IA	168.6750	N	NONE	168.6750	N	NONE	A		
10	Tactical	R3 TAC 3	IA	168.7750	N	NONE	168.7750	N	NONE	A		
11		BLANK										
12	Air Ground	A/G 51		168.3125	N	NONE	168.3125	N	NONE	A	INITIAL ATTACK/LOCAL A/G	
13	Air Ground	A/G PRI		166.8250	N	NONE	166.8250	N	NONE	A		
14	Air Ground	A/G SEC		168.7375	N		168.7375	N		A		
15	Medivac	VMED 28		155.3400	N		155.3400	N	156.7	A	Air Ambulance	
16	AIRGUARD			168.6250	N		168.6250	N	110.9	A		
5. Special Instructions:		USE HUMAN REPEATER WHEN NECESSARY. IF ASSIGNED COMMAND CHANNEL DOES NOT WORK TRY THE OTHER ONE.										
6. I-205 Prepared By: Communications Unit Leader			Name: Barry Stearns					Signature: <i>Barry H Stearns</i>				

1. INCIDENT NAME: Cerro Pelado	2. OPS PERIOD DATE: 5/4/22	START TIME: 0900	END TIME: 2030	SUNRISE 0609	SUNSET 1952
---	--------------------------------------	----------------------------	--------------------------	------------------------	-----------------------

3. REMARKS and RISK MITIGATIONS: All missions will be analyzed in terms of hazards and risks. Insure to brief for all IA missions to include new frequencies, ground contacts and other aircraft. High level to low level recon of each new LZ/Dipsite  Retardant Avoidance areas:	4. READY ALERT AIRCRAFT: IA 7HE See Medical Plan	5. TFR # 2/6919 Freq: 118.825 Surface ≥ 14,000' MSL See NOTAM for Poly
---	---	--

6. PERSONNEL	NAME	PHONE #	7. FREQUENCIES	AM	FM	8. FIXED-WING
AOBD	Lynne Howard	678-699-3266	A/A (Fixed/TFR)	118.825		Air Attack: 78NA / 690B / Base: ABQ
ASGS	John Mason	865-336-6664	A/A (Rotor)	121.325		Lead Planes/Airtankers/Scoopers - Order through Air Attack. If air attack is not up order through AOBD.
ATGS ATGS-T	Todd Pease Adam Soper	541-408-2309				
HEBM (Santa Fe)	Brian Kleisen	505-467-9351	A/G Primary (Command)		166.8250	Scoopers: 260 / CL-415 / Base: SAF 263 / CL-415 / Base: SAF Manager: Patrick Kane 530-363-8028
HMGB (7HE)	Josh Brookshire	505-670-9385	A/G Secondary (Tactical)		168.7375	TA49 35° 49.6644'N x 106° 19.0908'W Santa Fe Airport (SAF) 35° 37.02'N x 106° 05'.22'W Costs to: 2022.cerropelado.finance@firenet.gov
HMGB (8MB)	Freddie Abreu	505-908-4392	A/G 51 (IA)		168.3125	
HMGB (OPF)	Luke Copeland	661-860-6997				
HMGB (0BH)	Michael Hottel	719-900-8828	DECK (Santa Fe)		163.100	
HMGB (3CH)	Jason Combs	812-608-1266				
Santa Fe Dispatch	Tessa	505-438-5600	AIRGUARD (emergency only)		168.6250 TX Tone110.9	

9.HELICOPTERS

FAA N#	T Y	MAKE/ MODEL	BASE	AVAIL	START	REMARKS	FAA N#	T Y	MAKE/ MODEL	BASE	AVAIL	START	REMARKS
7HE	3	AS350B3	TA49	0800	0830	Not Assigned Forest IA Ship	Guard (Lobo 18)	1	UH60	SAF (ANG Base)	---	---	Off Duty
118MB	3	AS350B3	SAF	0800	0830	Recon / Bucket	Guard (Lobo 29)	1	UH60	SAF (ANG Base)	---	---	VIP Flight
20PF	2	212HP	SAF	0800	0830	Recon / Bucket	Guard (Lobo 31)	1	UH60	SAF (ANG Base)	0800	0830	Bucket
80BH	1	EH60A	SAF	0800	0830	Bucket	Guard (Lobo 59)	1	UH60	SAF (ANG Base)	0800	0830	Bucket
473CH	1	CH-47D	SAF	0800	0830	Bucket							

CERRO PELADO FIRE LIAISON CONTACT INFORMATION

Stephanie Allison: LOFR-Lead 662-763-8374 stephanie.allison@usda.gov
Rhea Whalen: LOFR(t) 843-412-3571 rhea.whalen@usda.gov

“We greatly value and appreciate all the incredible work and long, arduous hours firefighters are putting in to protect our aboriginal lands. We appreciate you beyond words. As Native people we have an inseparable bond with these lands both past and present. As such, please remember to leave intact and not remove or collect any cultural items such as historic arrow heads and broken pieces of pottery. Please leave them as they lay for the benefit of past, present and future generations.”

- Governor J. Michael Chavarria, Pueblo of Santa Clara



FIRE INFORMATION

<https://inciweb.nwcg.gov/incident/8075/>

<https://www.facebook.com/2022.cerropeladofire>

<https://twitter.com/SantaFeNF>

Phone-505-312-4593

We are looking for pictures of the Fire especially those of firefighters and equipment in action, structure protection and scenic shots of the fire. Please mail to 2022.CerroPelado@firenet.gov



USFS Chief’s 2022 Wildfire Letter of Intent



**Cerro Pelado Fire
Human Resource Message
May 4, 2021**

The Forest Service strives for a harassment-free work environment where people treat one another with respect.

Managers, supervisors, and all employees, as well as our contractors and cooperators have the primary responsibility for creating and sustaining this **harassment-free environment**.

All employees and contractor personnel must take personal responsibility for maintaining conduct that is **professional and supportive of this environment**.

WHAT HARASSMENT IS: Harassment is coercive or repeated, unsolicited and unwelcome verbal comments, gestures or physical contacts and includes retaliation for confronting or reporting harassment. Examples of harassment include, but are not limited to, the following:

Physical conduct: Unwelcome touching, standing too close, inappropriate or threatening staring or glaring, obscene, threatening, or offensive gestures.

Verbal or written conduct: Inappropriate references to body parts, derogatory or demeaning comments, jokes, or personal questions; sexual innuendoes; offensive remarks about race, gender, religion, age, ethnicity, sexual orientation, political beliefs, marital status, or disability; obscene letters or telephone calls; catcalls; whistles; sexually suggestive sounds; loud, aggressive, inappropriate comments or other verbal abuse.

Visual, Graphic or Pictorial Displays: Display of nude pictures, scantily clad, or offensively clad people; display of intimidating or offensive religious, political, or other symbols; display of offensive, threatening, demeaning, or derogatory drawings, cartoons, or other graphics; offensive T-shirts, coffee mugs, bumper stickers in locations covered above or other articles.

Individuals who believe they are being harassed or retaliated against should exercise any one or more of the following options as soon as possible:

- Tell the harasser to stop the offensive conduct; and/or
- Tell a manager or supervisor about the conduct; and/or
- Contact your Contracting Officer or any other individual you trust who would take action.
- **In addition, you may seek help from the Human Resource Specialist on the incident.**
- **You may also report directly to the Harassment Reporting Hotline: 844-815-8943**

“We are what we repeatedly do. Excellence, then, is not an act, but a habit.” -Aristotle-

Janine Summy, Human Resource Specialist, 509-429-1206, HRSPSummy@gmail.com

CERRO PELADO FIRE

Finance

Please see us after briefing

C-20

Below resources call Finance and ask for Gemaa

E-177

*****PLEASE NOTE*****

If you worked on FREELOVE FIRE

NMVCP-000055, PPPLF2 (1522)

Please **e-mail** all documents that pertain to your assignment to the Cerro Pelado inbox.

2022.cerropelado.finance@firenet.gov

Use the following format on the email subject line:

(Example: TIME/O-200/SBear/Safety)

Contact Finance Section at 720-527-2533

Required Financial Documents:

Agency Overhead	Agency ADs / EFFs	VIPR Resources	Contract / Agency Crews	Cooperators
Resource Order Signed CTRs	Resource Order Casual Hire Form Signed CTRs	Resource Order VIPR Agreement Schedule of Items Inspections Signed STs	Resource Order Manifest Agreement / Contract Schedule of Items Inspections Signed CTRs	Resource Order Agreement Signed STs /CTRs



Training Specialist Cerro Pelado

The Training Specialist is working remotely. Training Specialist contact information for the Cerro Pelado Fire is:

- Robert Rivelle
- Most important; If any Trainee or Trainer has any questions or concerns, call/text: 707.498.1761 **anytime**.
- Email: robert_rivelle@nps.gov

How to register as a Trainee:

1. Use the QR code below to register. If you're unable to register using the QR code, please call 707.498.1761 anytime.
2. Once registered, you will receive text and email updates.

How to close-out your training assignment:

1. **Trainer:** Complete and Evaluation Record in the back of the Position Task Book and make as many entries as possible within the individual tasks. Discuss this with your Trainee.
2. **Trainer:** Complete an individual performance rating (ICS 225) and go over the performance rating with your Trainee.
3. **Trainee:** Text a photo or email your individual performance rating (ICS 225) to the Training Specialist.
4. **Trainee:** Complete the Trainee exit questions at the QR code below.
5. **Trainee:** Once 1-4 are completed, the Trainee and the Training Specialist will have a brief conversation to discuss the Task Book and assignment with the Trainee.
6. **Done**, except for safe travels home!

Trainee Registration



Trainee Exit Questions



05/04/2022

OVERHEAD

GSUL O-8.55 ARON, JAY B

05/05/2022

EQUIPMENT

ENG5 E-5 ENG5 - STONE MOUNTAIN FIRE
ENG6 E-142 ENGINE - T6 - MT-BDF - 72 (MT-DDC)
WTT1 E-146 WTS3 - B&G FORESTRY, LLC - 1FUPYCYB2HH274482

OVERHEAD

SMOD O-123 MODULE - SUPPRESSION - BERNALILLO DISTRICT - N6S

05/06/2022

CREWS

HC2I C-26 PATRICK ENVIRONMENTAL, INC. - NCC - 18A

EQUIPMENT

ENG3 E-130 ENGINE - T3 - ENGINE - 4-62 (E-4-62 - 7037 - FREIGHTL
ENG4 E-129 ENGINE - T4 - NMRPD - ENGINE 1441
ENG6 E-155 ENGINE-T6 -NMN6S - LOS ALAMOS FD - FORD F550 - BRUS
UTV E-128 ENG7 - NMN6S - LOS ALAMOS FD - POLARIS 2 - ET7

OVERHEAD

GISS O-125 SHELLEY, MICHAEL B
ITSS O-83 WEBB, WALTER K
LSC1 O-163 BROWNING, SALLY SARA
PROC O-93 PELCH, GEMAA MAREE
RESL O-124 SOBIESKI, SUE ANN
SCKN O-126 PARKER, SUSAN ELIZABETH

Cerro Pelado Fire Demob Unit

Demob Day Approaching?

DEMOB HOURS OF OPERATION: 0730 -2200

720-584-9090 or email:

2022.cerropelado.demob@firenet.gov

1. Ensure that your supervisor has released you from the incident at least 24 hours in advance.
2. Contact FINANCE 24 hours prior to give them a heads-up you are departing: Phone: 720-527-2533
3. Turn in any outstanding CTRs/Shift Tickets. Make sure they are SIGNED.
4. Confirm there is no missing financial documentation. (See Finance Page for full information)

For Crew Swaps, scan this code:



Need Air Travel to get Home?

**IF YOUR RETURN METHOD OF TRAVEL IS BY AIR, CONTACT DMOB AT
LEAST 72-HOURS BEFORE DEMOB DAY**

**Email: Include Gender, Name EXACTLY as it appears on your drivers
license, Date of Birth, Departure & Final Destination Airport, city for
Rental Car Return, your email and phone number
to: 2022.cerropelado.demob@firenet.gov**

AIR TRAVEL PHONE: 720-584-9090

Cerro Pelado Demob Instructions

On your Demob Day

STEP 1

Ensure that your supervisor has released you from the incident at least 24 hours in advance.

STEP 2

SUPPLY – Return gear and supplies.

- If nothing to turn in, contact supply to clear you.

GROUND SUPPORT – Return pool NERV rentals, receive an inspection, etc.

- Be sure to get inspected.

COMMUNICATIONS – Return communications equipment

STEP 3

FINANCE – To finalize your finance paperwork, do the following:

- **Please call 720-527-2533 to initiate your final OF-288 or OF-286.**
 - **Virtual Demob, please email your final CTR/ST noting Final CTR/ST in the subject line of the email, please include your cell phone number. Cerro Pelado Finance email 2022.cerropelado.finance@firenet.gov**
 - **In-Person Demob: If you are unable to do a virtual demob, please arrange for an in person demob at the ICP. *Please keep your hard copy CTRs/STs to be turned in in-person.***

You need your final, signed OF-288 Time Report or OF-286 Invoice BEFORE starting travel.

STEP 4

Contact DMOB at 720-584-9090 and DMOB will verify that you have completed check- out. Be prepared to talk about your actual departure date and time, your anticipated arrival date and time, and where you will be staying if travel includes overnight stops away from fire camp.

You must complete all four steps to be released in IROC.

Logistics

IMPORTANT All resources will need to clone radios for today's shift**

Communications will available after briefing at Base Camp and South FOB.

Ordering Process

Orders should be sent to the below ORDM's by 1300 for Cache Orders. For all other orders please have orders to ORDM's by 0800 hours or 1500 hours. Orders should be routed as shown below:

2022.cerrodelado.ordering@firenet.gov

Logistics: Sally Browning sbrowning50@gmail.com

Jane Artega 530-957-3558

Support Branch Director: Base Camp: Joe Walker 601-201-1776

Facilities Unit Contact: Base Camp: Jimmy Rickard 706-308-2015

ICP: Susanne Adams 715-783-0291

Ground Support: Jay Aron 720-584-8468

Supply Unit:: Tom Piper 727-514-5513

Medical Unit Fred Adler 479-238-6064 or Nick Arnett 408-888-1900

Security Manager: Karen Bradford 423-851-4206

Food Unit: Clyde Leggins 720-584-2569

Communications: Barry Stearns 954-553-6544

South FOB: Sean Brown 970-318-8594

Jeff Neuman 208-681-5701

Fuel Truck Hours 0630 to 0900 and 1800 to 2100

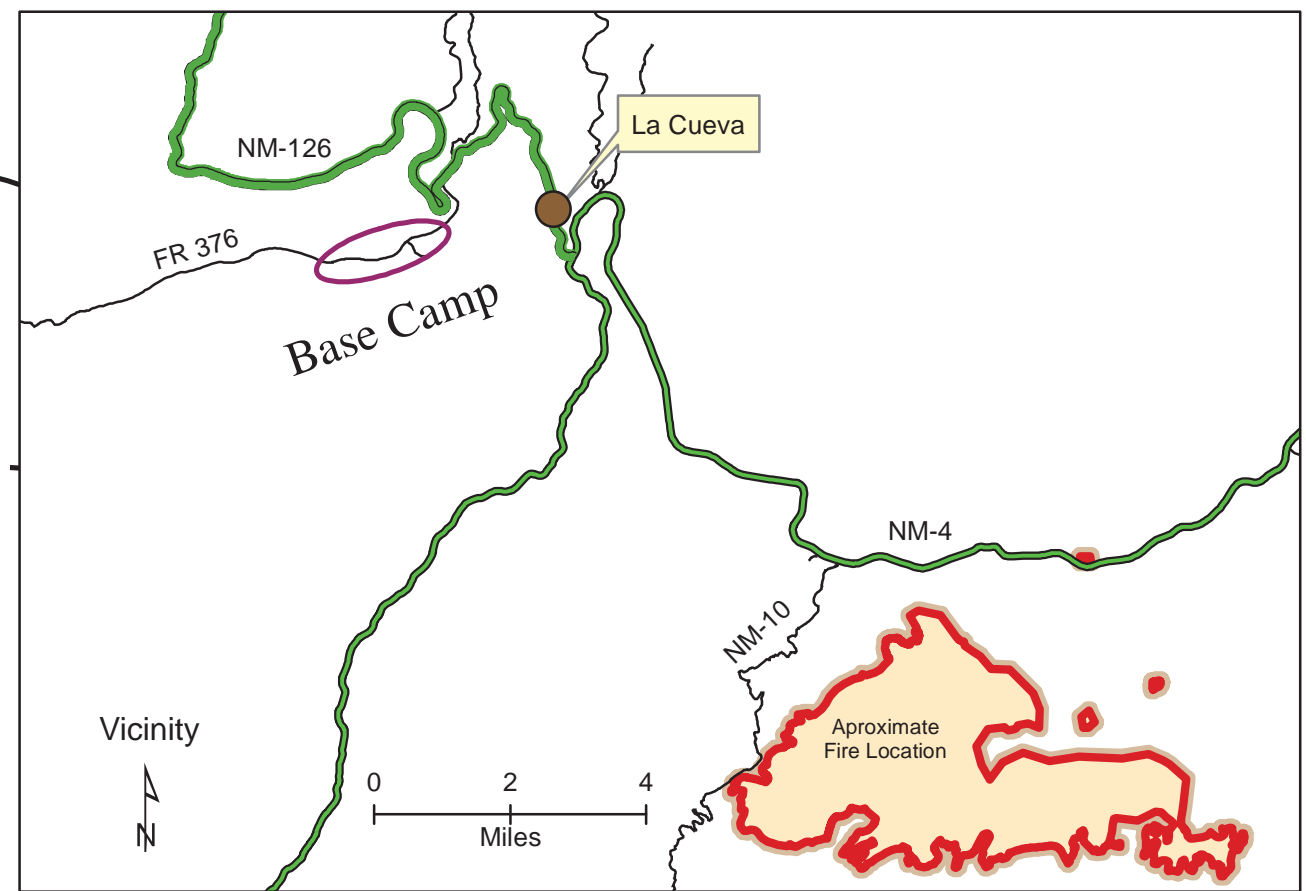
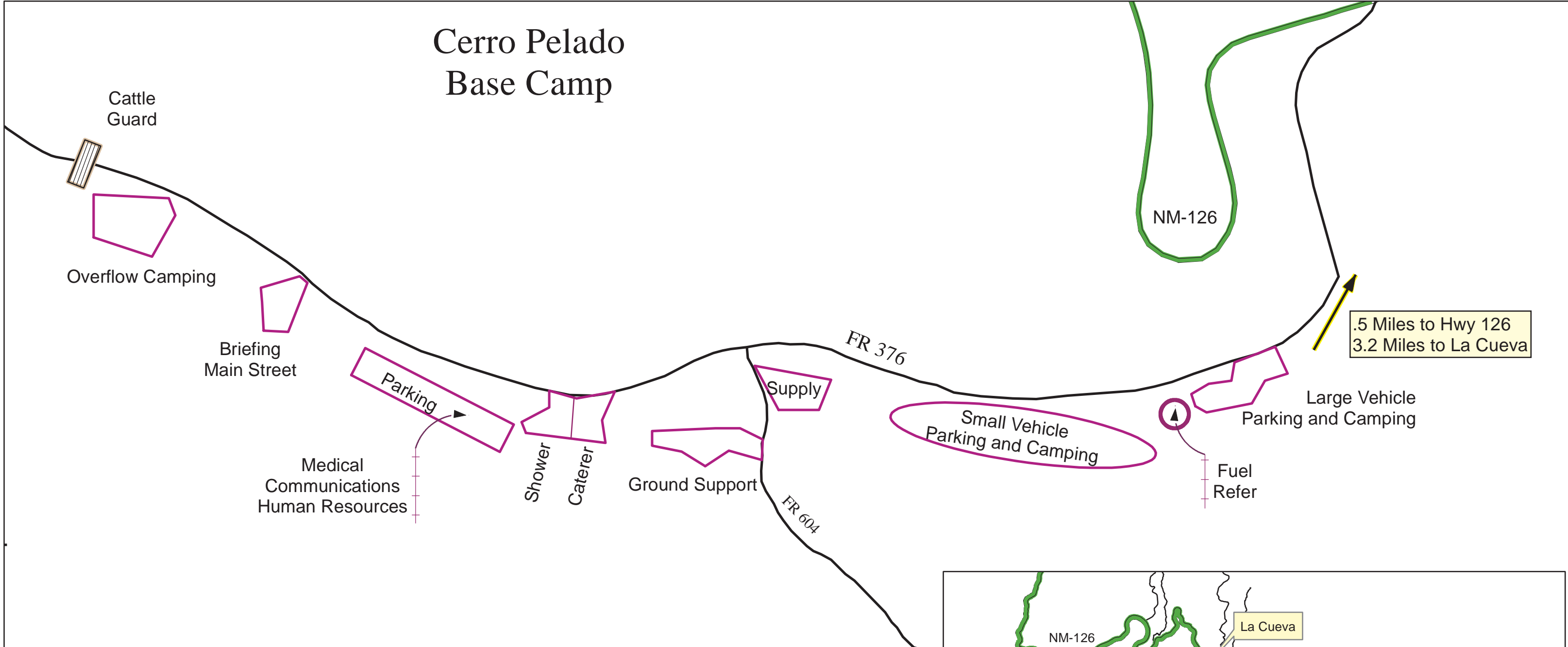
2 Fuel Tenders will be available, they will be located at the Banco Bonito Staging area and located at Base Camp near lunch refer.

Showers are located at the Base Camp located on Forest Service Road 376 (mile marker 35).

Shower Hours: 0600 to 1200 and 1400 to 2200

Night Shift: Breakfast will be served at the Hummingbird Music Camp @ 0900 and dinners at Base Camp @ 1700

Cerro Pelado Base Camp



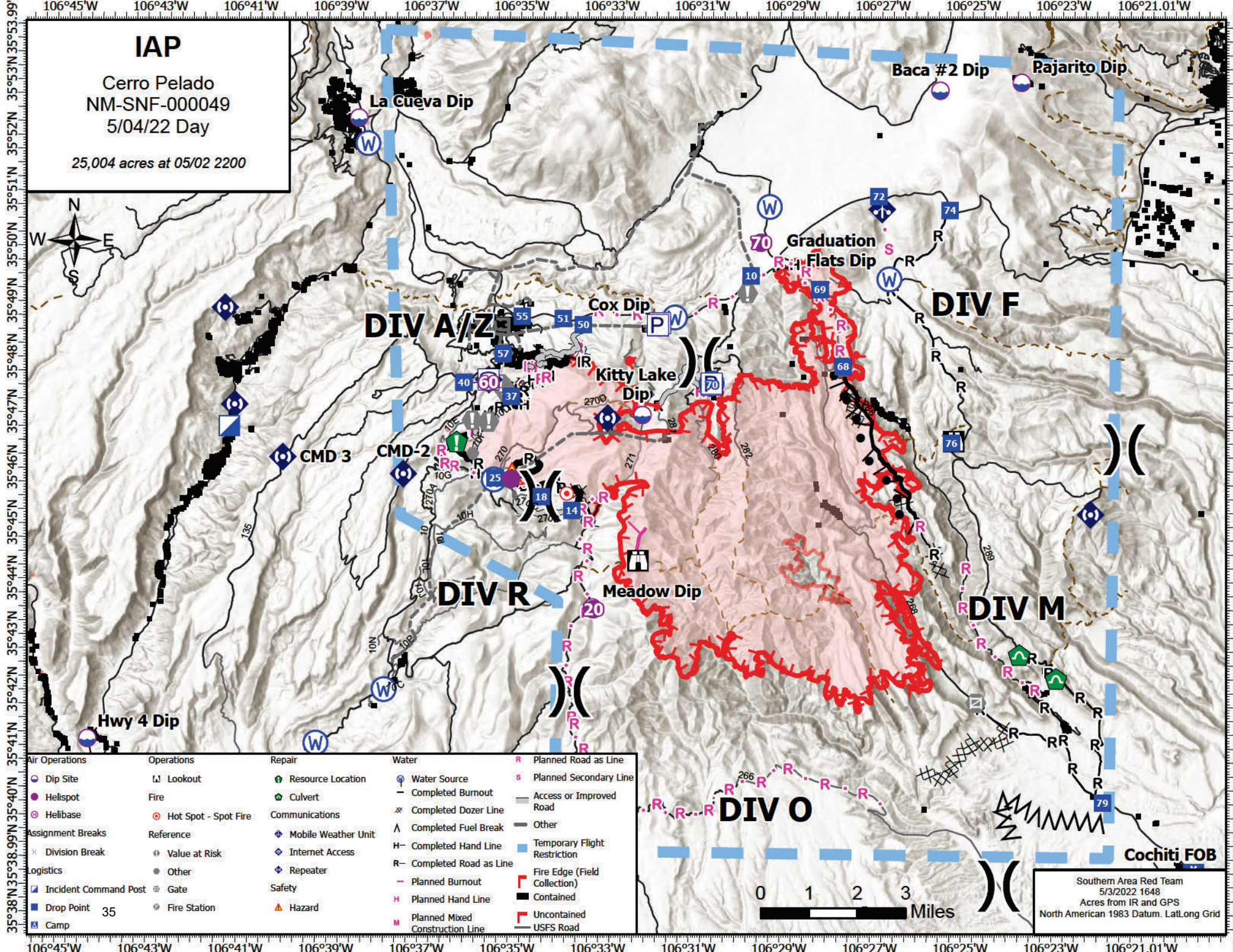
0 500 1,000 Feet

0 0.125 0.25 0.5 Miles

IAP

Cerro Pelado
NM-SNF-000049
5/04/22 Day

25,004 acres at 05/02 2200



Air Operations	Operations	Repair	Water	R Planned Road as Line
Dip Site	Lookout	Resource Location	Water Source	S Planned Secondary Line
Helispot	Fire	Culvert	Completed Burnout	Access or Improved Road
Helibase	Hot Spot - Spot Fire	Communications	Completed Dozer Line	Other
Assignment Breaks	Reference	Mobile Weather Unit	A Completed Fuel Break	Temporary Flight Restriction
Division Break	Value at Risk	Internet Access	H Completed Hand Line	Fire Edge (Field Collection)
Logistics	Other	Repeater	R Completed Road as Line	Uncontained
Incident Command Post	Gate	Safety	P Planned Burnout	USFS Road
Drop Point 35	Fire Station	Hazard	H Planned Hand Line	
Camp			M Planned Mixed Construction Line	

DIV O

0 1 2 3 Miles

Cochiti FOB

Southern Area Red Team
5/3/2022 1648
Acres from IR and GPS
North American 1983 Datum. LatLong Grid

MEDICAL PLAN (ICS 206 WF)

Controlled Unclassified Information//Basic

1. Incident/Project Name				2. Operational Period				
Cerro Pelado Fire				05/4-5/2022 0700-1900				
2. Medical Aid Stations								
Medical Aid Stations		Location			Advanced Life Support (ALS)			
					Yes		No	
ERL Medical Trailer		Base Camp						
3. Ambulance Services								
For local 911 resources, call Sandoval County Dispatch (505) 896-7300								
Name		Location		Phone		Advanced Life Support (ALS)		
						Yes No		
MED 30 (4WD)		Division A		Cerro Communications		X		
Ambulance 1 (24-hr)		Division Z, DP-25		Cerro Communications		X		
Ambulance 2		Division M		Cerro Communications		X		
Ambulance 3		Division A		Cerro Communications		X		
Ambulance 4		Division M		Cerro Communications		X		
Jemez Pueblo Ambulance Service		4535 NM 4, Jemez Pueblo, NM		Sandoval Cty (above)		X		
MED 31		550 Zia Pueblo Road, NM		Sandoval Cty (above)		X		
4. Air Ambulance Services								
Sandoval County Dispatch (505) 896-7300 Air Ambulance A/G Frequency VMed28 155.34 Tx Tone 156.7								
Name		Location			Advanced Life Support (ALS)			
					Yes		No	
Classic Air Medical		Los Alamos – Night Vision			X			
Tri-State Care Flight		Santa Fe – Night Vision			X			
UNM Lifeguard		Albuquerque – Night Vision			X			
Bernalillo County Sheriff 505-798-7000		A-Star: Day short haul, 24-hour extrication/relocation			X			
5. Hospitals								
Name/Address	GPS Datum – WGS 84 Coordinate Standard		Travel Time Air Gnd		Phone	Helipad Yes No		Level of Care Facility
Los Alamos Medical Center 3917 West Road Los Alamos, NM	Lat:	35 52.91' N	30 min	40 min	(505) 231-2602 Supv (505) 662-4201	X		Level 3 Trauma
	Long:	106 19.13' W						
	VHF:							
University of New Mexico 2211 Lomas Blvd. NE Albuquerque, NM	Lat:	35 05.27' N	30 min	2 hrs	(505) 272-2111	X		Level 1 Trauma Burn Stabilization
	Long:	106 37.11' W						
	VHF:							
Christus St. Vincent Medical Center 455 St. Michael's Drive Santa Fe NM	Lat:	35 39.56' N	30 min	2 hrs	(505) 913-3361	X		Level 3 Trauma
	Long:	105 56.73' W						
	VHF:							
University of Colorado 12605 E. 16th Avenue, 3rd floor, Aurora, CO	Lat:	39 44.56' N	3.5 hrs	7 hrs	(844) 285-4555	X		Burn Center
	Long:	104 50.52' W						
	VHF:							
6. Clinics								
Trinity Urgent Care 1460 Trinity Dr Los Alamos, NM		Open 0900-1845 Every Day (505) 412-6033						

IWI IC Responsibilities:

- Take charge of the scene – inform the Division Supervisor and Communications that you are the IWI IC and establish radio communications (frequencies, channels). Identify the emergency name – Division A medical, etc.
- Assign or begin patient assessment (Medical Incident Report - MIR) and first aid. Request additional medical resources on division/branch or across incident. Transmit MIR patient information to Communications.
- Determine patient transportation through consultation with line medical personnel and Medical Unit Leader. Consider transportation time, risk to personnel, destination facility and available operational resources. If air transport is chosen, implement the plan for alternative transportation in the event aircraft cannot complete the mission. Order transportation resources through Communications as early as possible.
- Notify Communications as resources arrive and any patient status changes. Names of injured or deceased individuals will not be transmitted on the radio.
- Initiate documentation for future investigation; if a line safety officer is available, assign them to lead documentation. Do not move deceased individuals, gear or personal effects except to accomplish rescue work or protect the safety of others. Obtain written documentation of witnesses. The Unit Log, ICS 214, may be used for the initial documentation, but a subsequent narrative will be required.
- As appropriate, conduct an After-Action Review to determine successes, areas to improve and lessons learned.

MEDICAL PLAN (ICS 206 WF)

Controlled Unclassified Information//Basic

7. Division Branch Group	Area Location Capability		
Div A/Z	EMS Responders & Capability:	Med 30 Ambulance (ALS) Dispatch 877-261-4090 Ambulance 1 (ERL) DP-25 Tyler Grady 720-660-7786 Medic Team 2 (ALS) - Dean Carpenter 708-979-6976	
	ETA for Ambulance to Scene:	Air: 40 min. Ground: 30 min.	
Div F	EMS Responders & Capability:	REMS 2 (ALS) Cochiti Fire Station - Rick Bostian 479-422-0462 Ambulance 3 Mike Sheppard 724-366-8300 Medic Team 1 (ALS) - Cody Keller 404-966-3146	
	ETA for Ambulance to Scene:	Air: 40 min. Ground: 30 min.	
Div M	EMS Responders & Capability:	Ambulance 2 (ALS) Arnaldo Rivera 520-431-1611 Ambulance 4 (ALS) Coral McLain 509-655-3236	
	ETA for Ambulance to Scene:	Air: 40 min. Ground: 30 mins.	
Div O	EMS Responders & Capability:		
	ETA for Ambulance to Scene:	Air: 40 min. Ground: 1 hr.	
Div R	EMS Responders & Capability:	REMS-1 (ALS) DP-14 Tanner Smith 541-556-9045 Med Team 3 (ALS) - Jeff Molen 318-751-1087	
	ETA for Ambulance to Scene:	Air: 40 min. Ground: 30 min.	
Structure	EMS Responders & Capability:	<i>None assigned.</i>	
	ETA for Ambulance to Scene:	Air: 40 min. Ground: 30 min.	
Night Ops	EMS Responders & Capability:	Ambulance 1 (ALS) DP-25 Sage Stewart 479-806-0860 Ambulance 3 (ALS) Jackson Pixley 720-527-2788 Ambulance 4 (ALS) Dan Chandler 503-319-0640 Med Team 4 Randale Smith 434-426-8288	
	ETA for Ambulance to Scene:	Air: 40 min. Ground: 30 min.	
ICP	EMS Responders & Capability:	Levi Clymer (EMPF) 417-658-5155 Nick Arnett (EMTF) 408-888-1900 Karin Hefington (EMTF) 530-307-1706	
	Equipment Available on Scene:	BLS	
	Medical Emergency #:	(479) 238-6064 or (408) 888-1900	
	ETA for Ambulance to Scene:	Air: 20 min. Ground: 30 min.	
Base Camp	EMS Responders & Capability:	Medical Trailer	
	Equipment Available on Scene:	ALS	
	ETA for Ambulance to Scene:	Air: 35 min. Ground: 45 min.	
South FOB	EMS Responders & Capability:	Wayne Hare MEDL, EMTF 435-260-0051	
8. Prepared By (Medical Unit Leader)		9. Date/Time	10. Reviewed by (Safety Officer)
Levi Clymer, MEDL Nick Arnett, MEDL(t)		5/3/2022 1700	Tony Rivers, SOFR 5/3/2022 1700

MEDICAL PLAN (ICS 206 WF)

Controlled Unclassified Information//Basic

Medical Incident Report

FOR A NON-EMERGENCY INCIDENT, WORK THROUGH CHAIN OF COMMAND TO REPORT AND TRANSPORT INJURED PERSONNEL AS NECESSARY.

FOR A MEDICAL EMERGENCY: IDENTIFY ON SCENE INCIDENT COMMANDER BY NAME AND POSITION AND ANNOUNCE "MEDICAL EMERGENCY" TO INITIATE RESPONSE FROM IMT COMMUNICATIONS/DISPATCH.

Use the following items to communicate situation to communications/dispatch.

1. CONTACT COMMUNICATIONS / DISPATCH (Verify correct frequency prior to starting report)

Ex: "Communications, Div. Alpha. Stand-by for Emergency Traffic."

2. INCIDENT STATUS: Provide incident summary (including number of patients) and command structure.

Ex: "Communications, I have a Red priority patient, unconscious, struck by a falling tree. Requesting air ambulance to Forest Road 1 at (Lat./Long.) This will be the Trout Meadow Medical, IC is TFLD Jones. EMT Smith is providing medical care."

Severity of Emergency / Transport Priority	<input type="checkbox"/> RED / PRIORITY 1 Life or limb threatening injury or illness. Evacuation need is IMMEDIATE <i>Ex: Unconscious, difficulty breathing, bleeding severely, 2^o – 3^o burns more than 4 palm sizes, heat stroke, disoriented.</i> <input type="checkbox"/> YELLOW / PRIORITY 2 Serious Injury or illness. Evacuation may be DELAYED if necessary. <i>Ex: Significant trauma, unable to walk, 2^o – 3^o burns not more than 1-3 palm sizes.</i> <input type="checkbox"/> GREEN / PRIORITY 3 Minor Injury or illness. Non-Emergency transport <i>Ex: Sprains, strains, minor heat-related illness.</i>	
Nature of Injury or Illness & Mechanism of Injury		<i>Brief Summary of Injury or Illness (Ex: Unconscious, Struck by Falling Tree)</i>
Transport Request		<i>Air Ambulance / Short Haul/Hoist Ground Ambulance / Other</i>
Patient Location		<i>Descriptive Location & Lat. / Long. (WGS84)</i>
Incident Name		<i>Geographic Name + "Medical" (Ex: Trout Meadow Medical)</i>
On-Scene Incident Commander		<i>Name of on-scene IC of Incident within an Incident (Ex: TFLD Jones)</i>
Patient Care		<i>Name of Care Provider (Ex: EMT Smith)</i>

3. INITIAL PATIENT ASSESSMENT: Complete this section for each patient as applicable (start with the most severe patient)

Patient Assessment: See IRPG page 106

Treatment:

4. TRANSPORT PLAN:

Evacuation Location (if different): (Descriptive Location (drop point, intersection, etc.) or Lat. / Long.) Patient's ETA to Evacuation Location:

Helispot / Extraction Site Size and Hazards:

5. ADDITIONAL RESOURCES / EQUIPMENT NEEDS:

Example: Paramedic/EMT, Crews, Immobilization Devices, AED, Oxygen, Trauma Bag, IV/Fluid(s), Splints, Rope rescue, Wheeled litter, HAZMAT, Extrication

6. COMMUNICATIONS: Identify State Air/Ground EMS Frequencies and Hospital Contacts as applicable

Function	Channel Name/Number	Receive (RX)	Tone/NAC *	Transmit (TX)	Tone/NAC *
COMMAND					
AIR-TO-GRND					
TACTICAL					

7. CONTINGENCY: Considerations: If primary options fail, what actions can be implemented in conjunction with primary evacuation method? Be thinking ahead.

8. ADDITIONAL INFORMATION: Updates/Changes, etc.

REMEMBER: Confirm ETA's of resources ordered. Act according to your level of training. Be Alert. Keep Calm. Think Clearly. Act Decisively.