



# Cerro Pelado

**NM-SNF-000049, P3PK47 (0310)**

**Operational Period:  
Thursday, May 5, 2022  
0700 – May 6, 2022 0700**

Check - In



Avenza Maps



IAP

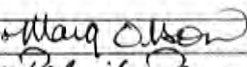
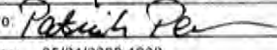


Cerro Pelado Communication Phone  
561-527-0804



**SA Red Team  
Incident Commander – Steve Parrish**

## INCIDENT OBJECTIVES (ICS 202)

<b>1. Incident Name:</b>	<b>2. Operational Period: 0700 - 0700</b>		
CERRO PELADO	Date/Time From:	Date/Time To:	
	05/05/2022 0700      THU	05/06/2022 0700	FRI
<b>3. Objective(s):</b>			
<b>Management Objectives</b>			
<p>1) Protection of human life and safety is the first priority for all actions taken on a wildfire and can overrule all other strategic/management objectives and incident requirements.</p> <p>2) Base management decisions on meeting objectives while also minimizing the risk of COVID-19 exposures to responders and the public. COVID-19 considerations may alter how you meet goals but should not lead to higher risk tactics.</p> <p>3) Maintain and strengthen relationships with the Santa Fe National Forest, private landowners, the public, cooperators and partners by providing timely and accurate information.</p> <p>4) Protect the unique attributes of impacted watersheds through actions that minimize sedimentation and invasive species movement.</p> <p>5) Minimize impact to cultural resources through consultation with Tribal Leaders and local Forest specialists.</p>			
<b>Control Objectives</b>			
<p>1) Protection of human life and safety is the first priority for all actions taken and shall override all other incident control objectives. Evaluate risk vs. benefit in strategic and tactical planning and only commit operational resources to actions that have the highest probability of success.</p> <p>2) Keep fire out of Jemez Canyon.</p> <p>3) Keep fire south of the community SLP and south of state route 4; keep fire west of forest road 289, and Tent Rock Ranch Rd.; keep fire north of Bear Spring Rd; keep fire east of forest road 266 and 271; keep fire north of forest road 270.</p> <p>4) Minimize retardant impacts to Jemez Natural Recreation Area.</p> <p>5) Protect values at risk in the Valles Caldera National Preserve including watersheds, visitor and administrative infrastructure, historic structures, cultural resources, and important wildlife habitats.</p> <p>6) Provide initial attack resources to respond to any new ignitions within the TFR area to limit potential size and growth.</p>			
<b>4. Operational Period Command Emphasis:</b>			
<p>Stop, Think, Discuss then Act, and ensure LCES is in place prior to engaging the fire or Initial Response fire.</p> <p>The Cerro Pelado fire receives a strategic, risk-based response, commensurate with the threats and opportunities, and uses the full spectrum of management actions, that consider fire and fuel conditions, weather, values at risk, and resources available.</p>			
<b>General Situational Awareness:</b>			
<ul style="list-style-type: none"> <li>• Continued low RHs</li> <li>• No predicted precipitation for several days</li> </ul>			
<b>WEATHER DISCUSSION:</b> Unusually early start to fire season. Critical to extreme fire weather for the next several days. Entire area is experiencing extended drought. Please see daily weather forecast for detailed report.			
<b>7. Prepared by:</b>	MARG OLSON	<b>Position/Title:</b>	PLANNING SECTION CHIEF
<b>Signature:</b>			
<b>8. Approved by Incident Commander:</b>	Name: STEVE PARRISH	<b>Signature:</b>	
ICS 202	<b>IAP Page</b>	<b>Date/Time:</b>	05/04/2022 1800

## ORGANIZATION ASSIGNMENT LIST (ICS 203)

<b>1. Incident Name:</b>		<b>2. Operational Period:</b> 0700 - 0700		
CERRO PELADO		Date/Time From: 05/05/2022 0700	THU Date/Time To: 05/06/2022 0700 FRI	
<b>3. Incident Commander(s) and Command Staff:</b>		<b>6. Logistics Section:</b>		
IC/UC	PARRISH, STEVE G	CHIEF	BROWNING, SALLY; ARTEAGA, JANE	
DEPUTY	PEARSON, PAT	SUPPLY UNIT	PIPER, TOM	
SAFETY OFFICER	RIVERS, TONY; HAWKINS, TOMMY; LIDDELL, BRAD; STONE, DAVID	FACILITIES UNIT	ADAMS, SUSANNE; RICKARD, JAMES (T)	
INFORMATION OFFICER	HIBBARD, CATHERINE; AURIEMMO, LESLIE; STRAWSER, BONNIE (VIRTUAL); ENGLE, JASON (T)	GROUND SUPPORT UNIT	AARON, JAY; JOHNSON, ROBERT; KAUTT, JON	
LIAISON OFFICER	STEVENS, PAUL; ALLISON, STEPHANIE (T); WHALEN, RHEA (T)	COMMUNICATIONS UNIT	STEARNS, BARRY; REGAN, RON; RADZIVILL, DAVID (T)	
<b>4. Agency/Organization Representative(s):</b>		MEDICAL UNIT	CLYMER, LEVI; ARNETT, NICK (T)	
<b>Agency/Organization</b>	<b>Name</b>	SECURITY UNIT	BRADFORD, KAREN L; FAGERMAN, DAVIN	
USFS SANTA FE	CRESS, DEBBIE; MARSHALL, JEREMY; ELMORE, LANCE (FMO); SHORT, TIM	FOOD UNIT	LEGGINS, CLYDE; NAUMANN, JEFF	
NEW MEXICO FORESTRY DIVISION	CRANE, LAWRENCE	LOGISTICS SERVICE/SUPPORT	WALKER, JOE	
NPS VALLES CALDERA	SILVA-BANUELOS, JORGE	<b>7. Operations Section:</b>		
NPS BANDELIER	RODGERS, MARLA; THIVENER, JASON	OPS SECTION CHIEF	MYERS, PETER;; ANDY PASCARELLA(T) ; RAMSAY, JOHN (T)	
TRIBAL LIAISON	MONTES, REUBEN	PLANNING OPS	EDGE, VICKI; COOK, CHAD (T)	
LOS ALAMOS NATIONAL LABORATORY	NIETO, RICH	<b>Branch I</b>		
IARR FEDERAL RESOURCES NM AND AZ	GIBBS, PAUL	BRANCH DIRECTOR	MORTON, HEATH; ANDY PASCARELLA (T)	
<b>5. Planning Section:</b>		DIVISION/GROUP	F	BURGETT, JOEL; MCKINNON, BLAINE (T)
CHIEF	FORDER, MISSY; OLSON, MARG	DIVISION/GROUP	A/Z	RAULERSON, WILLIAM
RESOURCES UNIT	PHILLIPS, B.; AUBUCHON, R.; SOBIESKI, S. (VIRTUAL) (T)	DIVISION/GROUP	M	WARD, MIKE D
SITUATION UNIT	KETT, SUSAN; ROBERTSON, ETHAN	DIVISION/GROUP	O	UNSTAFFED
DEMOBILIZATION UNIT	THOMAS, DONNA L LORD, J M (T)	DIVISION/GROUP	R	ALVES, FRANK; HELFFENSTIEN, LUKE (T)
FIRE BEHAVIOR ANALYST	COONS, ALISON C	<b>Branch II</b>		
HUMAN RESOURCE SPECIALIST	SUMMY, JANINE	BRANCH DIRECTOR	TAYLOR, CORDELL	
TRAINING SPECIALIST	RIVELLE, RICHARD	DIVISION/GROUP	NIGHT	EDWARDS, AARON
GIS SPECIALIST	BARNES, T.; KIRSCH, A.; SHELLEY, M.; GATES, K. (T)	<b>7b. Air Operations Branch:</b>		
TECHNOLOGY SUPPORT SPECIALIST	FARMER, TONY; PADDOCK, BRIAN; WEBB, KELLY (T)	AIR OPS BRANCH DIRECTOR	HOWARD, LYNN	
INCIDENT METEOROLOGIST	STEARNS, SCOTT	AIR SUPPORT SUPERVISOR	MASON, JOHN	
DOC. UNIT	KOSIOROWSKI, JOEY (VIRTUAL)	HELIBASE MANAGER	KLEISEN, BRIAN	
READ	SILVA, ANDRE; TURNER, KATHY BAISDEN, BECKY; THOMPSON, LISA	<b>8. Finance/Administration Section:</b>		
<b>9. Prepared By:</b> Name: MARG OLSON		CHIEF	MEREDITH, JAMES M; WARNER, JOHN	
Position/Title: PLANNING SECTION CHIEF		TIME UNIT	WINKLER, KIMBERLY	
ICS 203	IAP Page	PROCUREMENT UNIT	PELCH, GEMAA	
Date/Time: 05/04/2022 1800		Signature:		

## ORGANIZATION ASSIGNMENT LIST (ICS 203)

<b>1. Incident Name:</b>		<b>2. Operational Period:</b> 0700 - 0700	
CERRO PELADO		Date/Time From: 05/05/2022 0700      THU	Date/Time To: 05/06/2022 0700      FRI
COMPENSATION UNIT	LOWDER, DIANE		
COST UNIT	TRAVIS, DIANE		
<b>9. Prepared By:</b>	<b>Name:</b> MARG OLSON	<b>Position/Title:</b> PLANNING SECTION CHIEF	<b>Signature:</b>
ICS 203	IAP Page	<b>Date/Time:</b> 05/04/2022 1800	



To: All Incident Personnel, Cerro Pelado Fire

As Southern Area National Type I Incident Commander, I am committed to a policy of “zero tolerance” of inappropriate behavior during incident operations. Any form of harassment, discriminatory practices, or disrespectful behavior will not be tolerated. Known or reported acts will be dealt with appropriately.

I am particularly concerned about the perception that alcohol has a place in any of the Incident facilities. It is not appropriate to indulge in alcoholic beverages during any fire assignment.

The National Team from the Southern Region has a policy of “NO ALCOHOL” from the time of dispatch until the time of physical release from the Incident. Members of the Team voluntarily comply with this policy; all incident personnel will be expected to do so also.

We endorse, support, and expect an attitude of mutual respect for all Incident personnel and the public we serve. We also, endorse the attitude and work ethic that places “Safety First, every time on every Incident.” We expect nothing less.

/s/Steve Parrish

Incident Commander

SAIMT 1



# INCIDENT Weather Forecast



**Forecast No:** 12  
**Prediction For:** Thursday  
**Shift Date:** May 05, 2022  
**Forecast Issued:** May 04, 2022 at 1800

**Name of Incident:** Cerro Pelado Fire  
**Unit:** Santa Fe NF  
**Incident Meteorologist:** Scott Stearns  
 (208) 577-1617

**Discussion:** Today, we'll finally see typical diurnal winds, slightly slower than yesterday with gusts likely remaining at or below 20 mph. Temperatures will partially rebound today, with highs near-normal for this time of year thanks to a ridge of high pressure building over the region. Friday looks to be fairly similar to yesterday in terms of wind, but about 10-15 degrees warmer with lower RHs.

### Forecast for Today:

**Sky/Weather:**

Mostly sunny

	<u>Jemez Springs 8,000'</u>			<u>Cerro Pelado Pk 9,400'</u>		
<b>Max Temperature:</b>	67			61	°F	
<b>Min RH:</b>	12			15	%	
<b>Wind (20 FT):</b>	Inversion breaking between 0900 and 1000. Expect light upslope/upvalley winds to dominate today.					
... US/UV	8			W	10	mph
... Gusts:	20			Gusts:	25	mph
<b>Haines Index:</b>	5			5		
<b>LAL:</b>	1			1		
<b>Chance of Precipitation:</b>	0			0	%	
<b>Tonight's Min Temperature:</b>	42			35	°F	
<b>Tonight's Max RH:</b>	30			30	%	
<b>Tonight's Wind (20 FT):</b>	Strong inversion setting in between 2000 and 2100. Down drainage winds will be slightly stronger than last night.					
... DS/DV	8			W	10	mph
... Gusts:	20			Gusts:	25	mph
<b>Tonight's Haines Index:</b>	5			5		
<b>Tonight's LAL:</b>	1			1		
<b>Tonight's Chnc of Precip:</b>	0			0	%	

### Forecast for Friday:

**Sky/Weather:**

Partly cloudy in the morning and decreasing through the day

	<u>Jemez Springs 8,000'</u>			<u>Cerro Pelado Pk 9,400'</u>		
<b>Max / Min Temperature:</b>	76	46		70	40	°F
<b>Min / Max RH:</b>	8	25		9	25	%
<b>Wind (20 FT):</b>	Inversion breaking between 1000 and 1100.					
... W	11			W	13	mph
... Gusts:	20			Gusts:	23	mph
<b>Haines Index:</b>	5			<b>LAL:</b>	1	
				<b>Precip Chance:</b>	0	

### Extended Outlook:



High pressure begins to break down ahead of a major disturbance with some of the warmest temperatures yet experienced on this fire. The forecast remains dry with potential strong winds Saturday/Sunday through mid-next-week.

	<u>Max T</u>	<u>Min T</u>	<u>Min RH</u>	<u>Max RH</u>	<u>Ridge Winds @ 1500</u>	<u>Weather</u>
<b>8,600'</b>	<b>Sat:</b> 77	46	9	35	W @ 19 G33	near-critical fire weather
	<b>Sun:</b> 75	43	9	35	WSW @ 22 G35	critical fire weather likely
	<b>Mon:</b> 70	39	9	35	SW @ 24 G40	critical fire weather likely

If you have weather observations, please provide them to the IMET / FBAN.

## FIRE BEHAVIOR FORECAST

<b>FORECAST NUMBER:</b> 12	<b>TYPE OF FIRE:</b> Wildland, Type 1
<b>FIRE NAME:</b> Cerro Pelado	<b>OPERATIONAL PERIOD:</b> Day Shift
<b>DATE ISSUED:</b> 5/4/22 <b>TIME ISSUED:</b> 1800	<b>SHIFT DATE:</b> Thursday May 5, 2022
<b>UNIT:</b> Santa Fe NF	<b>SIGNED:</b> Alison Coons, FBAN

<b>WEATHER SUMMARY:</b>	<b>Fire Environment &amp; Danger Information</b>	
<p><b>Local Thresholds – Watch Outs</b>                  Min RH 8%, Winds 8 Gusts to 20 mph, Temp&gt;70,                  Heavy Fuels &lt;9%</p> <p><b>Today's Significant Fire Weather:</b>  <b>RH of 12%, Winds 10 mph, gusts over 20 mph</b></p>	 SNF West Pocket Card	 SWCC Fire Danger Page

### FIRE BEHAVIOR:

**GENERAL:**

Weather and fuel conditions will continue to support active fire behavior across the eastern half of the incident and moderate fire behavior

Current Fire Environment Conditions:

Fine Dead Fuel Moisture = 4%, 1,000 Hour Fuel Moisture = 8-10%, Live Shrub Moisture = <82%  
 ERC's remain between the 90<sup>th</sup> and 97<sup>th</sup> percentile value for this date.

**Fire Behavior based on MAXIMUM values for the fuel models shown, exposed fuels on steep slope.**

Fuel Model	Rate of Spread	Flame Length
Slash w/ Grass/Shrub	11-56 chains/hour	8-14 feet Head Fire, 2-4 feet Backing Fire
Timber	4-10 chains/hour	3-8 feet

There is potential for spotting distances up to 1/2 miles. Probability of Ignition = **71%**

**Specific Areas of Concern:**

**Alpha and Zulu**– Like yesterday, west and northwest winds allow for the most active part of the division to remain somewhat sheltered by terrain. Expect the fire to continue to back toward Highway 4.

**Romeo**: Fire is expected to continue moving to the south across Oaks Mesa where fuels allow. As the fire moves farther southeast, a reduction in available fuels will aid in slowing overall movement in that direction.

**Mike**: The fire should hang up when it reaches the rock washes and sparse vegetation above Pueblo of Cochiti but continue to move through stringers of mixed conifer in the canyon bottoms. Expect the most activity on the southern portion of the division.

**Fox Trot**: Winds will move the more active portions of the division eastward toward the 289 road. If the fire crosses Highway 4, expect high spread rates in the Valles Caldera due to heavy grass loading. If the fire crosses east of the caldera into mixed conifer and heavy loads of dead and down and gets established, ground resources should expect very active fire behavior and spotting up to ½ mile.

**AIR OPERATIONS:**

Air support should be able to continue working throughout the shift. Smoke is likely to obscure visibility for pilots, be patient.

**SAFETY:**


Watch Out Situation 11 is emphasized today: **Unburned fuel between you and the fire.** We have a great deal of this situation. Remain alert for unanticipated runs through the fuels toward your location.

Please send any fire behavior on site weather observations or photos to: [alisoncc66@gmail.com](mailto:alisoncc66@gmail.com) 606-260-0526



## HEALTH AND SAFETY MESSAGE

*“We don’t plan on luck to be safe, we plan on sound risk management and good decisions.....the Red Team*

<b>INCIDENT:</b> Cerro Pelado Fire	<b>DATE:</b> Thursday, May 5 <sup>th</sup> , 2022
<b>Major Hazards &amp; Risks:</b> Shadow Day, Operations, Fatigue	
<p><b>Shadow Day</b> - Today is a <i>“Shadow Day”</i> with Rich Harvey’s Type 1 Team. Team Transitions can be a vulnerable time during any incident. Communication is extremely important for all resources to maintain a strong operational tempo during the transition period.</p> <p><b>Field Operations</b> - Point Protection and establishing direct line for burnout operations will continue across the Cerro Pelado Fire today. Personal and crew safety remains the most critical issue on this incident. There are lots of moving parts so clearly understand assignments and be accountable for meeting determined objectives. Don’t let silly acts result in injuries or accidents. Stay alert. If fire intensity increases, be prepared to act accordingly.</p> <p><b>Fatigue</b> - With the recent fire activity resources have had to work <i>extended duty hours and long shifts</i>. Make sure your work rest ratio and guidelines are being adhered to. <i>Proper diet and rest</i> will eliminate the onset of extreme fatigue over extended periods of time.</p>	
<p style="text-align: center;"><b><i>KNOW YOUR LIMITATIONS</i></b></p> <ul style="list-style-type: none"><li>• <i>Employ your resources in accordance with their capabilities - set them up to succeed!</i></li><li>• <i>Know yourself and your limitations - seek feedback from peers and upper management if in doubt</i></li></ul>	

*Red Team Safety Officers: Tony Rivers, Tommy Hawkins, Brad Lidell, Dave Stone*



**Division/Group Assignment List (ICS 204 WF)**  
**Controlled Unclassified Information//Basic**

<b>1. Incident Name:</b>			<b>3.</b>			
CERRO PELADO			<b>Branch:</b>		<b>Division/Group</b>	
<b>2. Operational Period:</b> 0700 - 0700			I		A/Z	
Date/Time From: 05/05/2022 0700 THU		Date/Time To: 05/06/2022 0700 FRI				
<b>4. Operations Personnel</b>						
<b>OPERATIONS CHIEF</b>		P. MYERS, M. DAVIS V. EDGE, C, COOK (T), J. RAMSAY (T)		<b>BRANCH DIRECTOR</b>		HEATH MORTON ANDY PASCARELLA (T)
<b>DIVISION/GROUP SUPERVISOR</b>		WILLIAM RAULERSON		<b>SAFETY</b>		
<b>5. Resources Assigned this Period</b>						
Strike Team / Task Force / Resource Designator		LWD	Leader	Number Persons	Drop Off PT./Time	Pick Up PT./Time
O-106 TFLD		05/10	CHRISTINE WEIR KOETTER	1	BASE CAMP/0700	BASE CAMP/1900
C-17 HC2 DECANSO CREW 5		05/13	CINDY PETRICH	21	BASE CAMP/0700	BASE CAMP/1900
E-131 ENG3 SAN JUAN COUNTY		05/09	AARION AUSTIN	3	BASE CAMP/0700	BASE CAMP/1900
E-129 ENG4 ENGINE 1441 NM-BLM		05/05	FORREST PETERMAN	3	BASE CAMP/0700	BASE CAMP/1900
E-3 ENG4 ENGINE 304 SUNDANCE		05/07	PETER MUNRO	3	BASE CAMP/0700	BASE CAMP/1900
E-2 ENG6 DEBEQUE		05/08	VOORHEES	2	BASE CAMP/0700	BASE CAMP/1900
E-105 ENG6 RAMOS EAGLE		05/08	CORVIN LESTER	3	BASE CAMP/0700	BASE CAMP/1900
E-114 WTT2 COWBOY		05/07	WYATT LACKMAN	2	BASE CAMP/0700	BASE CAMP/1900
WTT2 TENDER 26 HEMEZ FIRE					BASE CAMP/0700	BASE CAMP/1900
O-141 MED 2		05/16	DEAN CARPENTER	2	BASE CAMP/0700	BASE CAMP/1900
E-59 AMBU		05/17	TYLER GRADY	2	BASE CAMP/0700	BASE CAMP/1900
O-202 SOFR		05/15	LANCE DELGADO	1	BASE CAMP/0700	BASE CAMP/1900
<b>6. Control Operations/Work Assignments:</b>						
<p>Task: Continue to provide engine resource presence for the community SLP, and mop up control lines near SLP structures. Hold and mop up A/Z. Continue to brush Hwy 4.</p> <p>Purpose: To reduce the fire threat to the community SLP, and keep fire progression east of FS-10. Hold fire north of FS 270.</p> <p>End State: Lift evacuations and return residents to community SLP, and fire progression east of FS 10. Hold fire within the identified road system to minimize impact on landscape.</p>						
<b>7. Special Instructions:</b>						
<ul style="list-style-type: none"> <li>Briefing will be held at base camp 0700.</li> </ul>						
<b>8. Division/Group Communication Summary</b>						
Function	Channel	RX Frequency N/W	RX Tone/NAC	TX Frequency N/W	TX Tone/NAC	Mode
COMMAND	1	169.7500 N	146.2	167.1000 N	146.2	A
TACTICAL	7	168.2000 N	146.2	168.2000 N	146.2	A
AIR TO GROUND	13	166.8250 N		166.8250 N		A
<b>9. Prepared By (Resource Unit Leader)</b>			<b>Approved By (Planning Section Chief)</b>		<b>Date</b>	<b>Time</b>
BRITTANY PHILLIPS			MARG OLSEN		05/04/2022	1800

**Division/Group Assignment List (ICS 204 WF)**  
**Controlled Unclassified Information//Basic**

<b>1. Incident Name:</b>				<b>3.</b>			
CERRO PELADO				<b>Branch:</b>		<b>Division/Group</b>	
<b>2. Operational Period:</b> 0700 - 0700				<b>I</b>		<b>A/Z</b>	
Date/Time From: 05/05/2022 0700 THU		Date/Time To: 05/06/2022 0700 FRI					
<b>4. Operations Personnel</b>							
<b>OPERATIONS CHIEF</b>		P. MYERS, M. DAVIS V. EDGE, C, COOK (T), J. RAMSAY (T)		<b>BRANCH DIRECTOR</b>		HEATH MORTON ANDY PASCARELLA (T)	
<b>DIVISION/GROUP SUPERVISOR</b>		WILLIAM RAULERSON		<b>SAFETY</b>			
<b>7. Special Instructions:</b>							
<ul style="list-style-type: none"> <li>• Coordinate with READ before ground disturbance.</li> <li>• Coordinate with Sandoval County, State Police, and Tribal Nations</li> <li>• Identify impassable roads with GPS locations in Field Map.</li> <li>• Do not post photos with archaeological resources that have location information.</li> <li>• Leave all gates as you found them, either opened or closed. If the gate was closed when you arrived, close it as you leave.</li> <li>• Identify IA resources off each division to support IA under TFR.</li> <li>• When responding to IA please use IA group channels. Please see IA Group 205 for appropriate channels.</li> <li>• <b>** IN THE EVENT OF AN IWI: CONTACT COMMUNICATIONS ON COMMAND</b></li> </ul>							
<b>8. Division/Group Communication Summary</b>							
Function	Channel	RX Frequency N/W	RX Tone/NAC	TX Frequency N/W	TX Tone/NAC	Mode	
COMMAND	1	169.7500 N	146.2	167.1000 N	146.2	A	
TACTICAL	7	168.2000 N	146.2	168.2000 N	146.2	A	
AIR TO GROUND	13	166.8250 N		166.8250 N		A	
<b>9. Prepared By (Resource Unit Leader)</b>			<b>Approved By (Planning Section Chief)</b>			<b>Date</b>	<b>Time</b>
BRITTANY PHILLIPS			MARG OLSEN			05/04/2022	1800

**Division/Group Assignment List (ICS 204 WF)**  
**Controlled Unclassified Information//Basic**

<b>1. Incident Name:</b>			<b>3.</b>			
CERRO PELADO			<b>Branch:</b>		<b>Division/Group</b>	
<b>2. Operational Period:</b> 0700 - 0700			<b>I</b>		<b>F</b>	
Date/Time From: 05/05/2022 0700 THU		Date/Time To: 05/06/2022 0700 FRI				
<b>4. Operations Personnel</b>						
<b>OPERATIONS CHIEF</b>		P. MYERS, M. DAVIS V. EDGE, C. COOK (T), J. RAMSAY (T)		<b>BRANCH DIRECTOR</b>		HEATH MORTON ANDY PASCARELLA (T)
<b>DIVISION/GROUP SUPERVISOR</b>		JOEL BURGETT BLAINE MCKINNON (T)		<b>SAFETY</b>		DAVE STONE
<b>5. Resources Assigned this Period</b>						
Strike Team / Task Force / Resource Designator	LWD	Leader	Number Persons	Drop Off PT./Time	Pick Up PT./Time	
C-22.2 TFLD	05/07	NATE DRAGER	1	BASE CAMP/0700	BASE CAMP/1900	
O-300 TFLD (T)	05/17	GARRISON LUPTON	1	BASE CAMP/0700	BASE CAMP/1900	
O-189 STEN	05/15	ORTA, JAMES	1	BASE CAMP/0700	BASE CAMP/1900	
O-184 HEQB	05/14	RUSSELL HAYS	1	BASE CAMP/0700	BASE CAMP/1900	
O-246 HEQB (T)	05/16	MIKE STARR	1	BASE CAMP/0700	BASE CAMP/1900	
C-29 T1 ARAVAIPA IHC	05/17	GREG SMITH	18	BASE CAMP/0700	BASE CAMP/1900	
C-31 IDAHO PANHANDLE IHC	05/17	CHRIS SMITH	21	BASE CAMP/0700	BASE CAMP/1900	
C-1 T2IA CALIFORNIA 63	05/07	RAY BATRES	20	BASE CAMP/0700	BASE CAMP/1900	
C-13 T2 MOUNTAINEER CONTRACTING	05/09	JUAN PEREZ	20	BASE CAMP/0700	BASE CAMP/1900	
C-12 T2 BIRRUETA	05/08	CRISTIAN JUAREZ	20	BASE CAMP/0700	BASE CAMP/1900	
C-19 T2 PACO#11	05/09	DEREK FINCH	20	BASE CAMP/0700	BASE CAMP/1900	
O-123 SMOD NM MODULE 6	05/07	MATT HEFFLER	4	BASE CAMP/0700	BASE CAMP/1900	
O-199 FMOD FALLER MODULE - UNDERDOG TIMBER FALLING, INC. - FALLER	05/15	DANIEL O'RILEY	3	BASE CAMP/0700	BASE CAMP/1900	
E-5 ENG3 STONE MOUNTAIN PROTECTION	05/05	JOHN DICKERSON	4	BASE CAMP/0700	BASE CAMP/1900	
E-109 ENG4 ARROW FIRE & LAND MANAGEMENT	05/09	STEVE MARROW	3	BASE CAMP/0700	BASE CAMP/1900	
E-107 ENG5 LAPOINT FD	05/09	LANE HARRIS	3	BASE CAMP/0700	BASE CAMP/1900	
E-155 ENG5 LA-7	05/07	LIEMER	3	BASE CAMP/0700	BASE CAMP/1900	
E-141 ENG6 310 DUST CONTROL	05/11	CHAD MORRIS	3	BASE CAMP/0700	BASE CAMP/1900	
E-211 ENG6 DOUBLE D FIRE PROTECTION	05/15	MATTHEW DIMAS	3	BASE CAMP/0700	BASE CAMP/1900	
WTT1 LA T-1		CROCKETT	2	BASE CAMP/0700	BASE CAMP/1900	
E-181 WTS2 DNN ENTERPRISES INC -	05/14	STEVE PIPER	1	BASE CAMP/0700	BASE CAMP/1900	
<b>8. Division/Group Communication Summary</b>						
Function	Channel	RX Frequency N/W	RX Tone/NAC	TX Frequency N/W	TX Tone/NAC	Mode
COMMAND	4	171.0625	146.2	162.1875	146.2	A
TACTICAL	6	168.2000 N	146.2	168.2000 N	146.2	A
AIR TO GROUND	13	166.8250 N		166.8250 N		A
<b>9. Prepared By (Resource Unit Leader)</b>		<b>Approved By (Planning Section Chief)</b>		<b>Date</b>	<b>Time</b>	
BRITTANY PHILLIPS		MISSY FORDER		05/04/2022	1800	

**Division/Group Assignment List (ICS 204 WF)**  
**Controlled Unclassified Information//Basic**

<b>1. Incident Name:</b>			<b>3.</b>			
CERRO PELADO			<b>Branch:</b>		<b>Division/Group</b>	
<b>2. Operational Period:</b> 0700 - 0700			I		F	
Date/Time From: 05/05/2022 0700 THU	Date/Time To: 05/06/2022 0700 FRI					
<b>4. Operations Personnel</b>						
<b>OPERATIONS CHIEF</b>		P. MYERS, M. DAVIS V. EDGE, C. COOK (T), J. RAMSAY (T)		<b>BRANCH DIRECTOR</b>		HEATH MORTON ANDY PASCARELLA (T)
<b>DIVISION/GROUP SUPERVISOR</b>		JOEL BURGETT BLAINE MCKINNON (T)		<b>SAFETY</b>		DAVE STONE
<b>5. Resources Assigned this Period</b>						
Strike Team / Task Force / Resource Designator	LWD	Leader	Number Persons	Drop Off PT./Time	Pick Up PT./Time	
E-182 WTS2 - DNN ENTERPRISES	05/14	MARK DAUER	1	BASE CAMP/0700	BASE CAMP/1900	
E-104 DOZ2 CECIL LOGGING	05/10	ROCKY FITHIN	2	BASE CAMP/0700	BASE CAMP/1900	
E-101 DOZ3 MOORE'S QUALITY EARTHMOVING	05/11	ERIC BLEVINS	1	BASE CAMP/0700	BASE CAMP/1900	
E-128 UTV TYPE 7 LA	05/05	KELLY STERNA	2	BASE CAMP/0700	BASE CAMP/1900	
E-264 LANL - MASTICATOR				BASE CAMP/0700	BASE CAMP/1900	
E-265 LANL MASTICATOR 2				BASE CAMP/0700	BASE CAMP/1900	
O-318 READ		NICK JARMAN	1	BASE CAMP/0700	BASE CAMP/1900	
O-140 MED 1	05/16	CODY KELLER	2	BASE CAMP/0700	BASE CAMP/1900	
E-190 AMBU	05/15	MIKE SHEPPARD	2	BASE CAMP/0700	BASE CAMP/1900	
<b>6. Control Operations/Work Assignments:</b>						
<p>Task: Continue structure protection on Division F. Continue mastication along Hwy 4 and FS 289. Continue to hold primary lines along Hwy 4 and alternate lines along FS 289.</p> <p>Purpose: Hold fire west of FS 289.</p> <p>End State: Lessening the footprint of the Cerro Pelado Fire while minimizing the impact to private lands.</p>						
<b>7. Special Instructions:</b>						
<ul style="list-style-type: none"> <li>• Briefing will be held at base camp 0700.</li> <li>• Coordinate with READ before ground disturbance.</li> <li>• Coordinate with Sandoval County, State Police, and Tribal Nations</li> <li>• Identify impassable roads with GPS locations in Field Map.</li> <li>• Do not post photos with archaeological resources that have location information.</li> <li>• Leave all gates as you found them, either opened or closed. If the gate was closed when you arrived, close it as you leave.</li> <li>• Identify IA resources off each division to support IA under TFR.</li> </ul>						
<b>8. Division/Group Communication Summary</b>						
Function	Channel	RX Frequency N/W	RX Tone/NAC	TX Frequency N/W	TX Tone/NAC	Mode
COMMAND	4	171.0625	146.2	162.1875	146.2	A
TACTICAL	6	168.2000 N	146.2	168.2000 N	146.2	A
AIR TO GROUND	13	166.8250 N		166.8250 N		A
<b>9. Prepared By (Resource Unit Leader)</b>			<b>Approved By (Planning Section Chief)</b>		<b>Date</b>	<b>Time</b>
BRITTANY PHILLIPS			MISSY FORDER		05/04/2022	1800

**Division/Group Assignment List (ICS 204 WF)**  
**Controlled Unclassified Information//Basic**

<b>1. Incident Name:</b>		<b>3.</b>	
CERRO PELADO		<b>Branch:</b>  <b>I</b>	<b>Division/Group</b>  <b>F</b>
<b>2. Operational Period:</b> 0700 - 0700			
Date/Time From: 05/05/2022 0700 THU	Date/Time To: 05/06/2022 0700 FRI		
<b>4. Operations Personnel</b>			
<b>OPERATIONS CHIEF</b>	P. MYERS, M. DAVIS V. EDGE, C. COOK (T), J. RAMSAY (T)	<b>BRANCH DIRECTOR</b>	HEATH MORTON ANDY PASCARELLA (T)
<b>DIVISION/GROUP SUPERVISOR</b>	JOEL BURGETT BLAINE MCKINNON (T)	<b>SAFETY</b>	DAVE STONE

**7. Special Instructions:**

- When responding to IA please use IA group channels. Please see IA Group 205 for appropriate channels.
- \*\* IN THE EVENT OF AN IWI: CONTACT COMMUNICATIONS ON COMMAND

**8. Division/Group Communication Summary**

Function	Channel	RX Frequency N/W	RX Tone/NAC	TX Frequency N/W	TX Tone/NAC	Mode
COMMAND	4	171.0625	146.2	162.1875	146.2	A
TACTICAL	6	168.2000 N	146.2	168.2000 N	146.2	A
AIR TO GROUND	13	166.8250 N		166.8250 N		A

<b>9. Prepared By (Resource Unit Leader)</b>	<b>Approved By (Planning Section Chief)</b>	<b>Date</b>	<b>Time</b>
BRITTANY PHILLIPS	MISSY FORDER	05/04/2022	1800

**Division/Group Assignment List (ICS 204 WF)**  
**Controlled Unclassified Information//Basic**

<b>1. Incident Name:</b>			<b>3.</b>			
CERRO PELADO			<b>Branch:</b>		<b>Division/Group</b>	
<b>2. Operational Period:</b> 0700 - 0700			<b>I</b>		<b>M</b>	
Date/Time From: 05/05/2022 0700	THU	Date/Time To: 05/06/2022 0700				
<b>4. Operations Personnel</b>						
<b>OPERATIONS CHIEF</b>		P. MYERS, M. DAVIS V. EDGE, C. COOK (T), J. RAMSAY (T)		<b>BRANCH DIRECTOR</b>		HEATH MORTON ANDY PASCARELLA
<b>DIVISION/GROUP SUPERVISOR</b>		MIKE WARD				
<b>5. Resources Assigned this Period</b>						
Strike Team / Task Force / Resource Designator	LWD	Leader	Number Persons	Drop Off PT./Time	Pick Up PT./Time	
O-320 TFLD	05/18	STEVEN NICHOLSON	1	COCHITI FOB/0700	COCHITI FOB/1900	
C-23 T2IA DIAMOND FIRE	05/15	LARRY ECKELMAN	20	COCHITI FOB/0700	COCHITI FOB/1900	
C-25 T2IA ZUNI	05/11	RICKEY BOOQUA	19	COCHITI FOB/0700	COCHITI FOB/1900	
C-26 T2IA PATRICK	05/06	JOSH CHILES	20	COCHITI FOB/0700	COCHITI FOB/1900	
C-27 T2 FRANCO REFORESTATION	05/17	FLORENCIO FRANCO	20	COCHITI FOB/0700	COCHITI FOB/1900	
C-28 T2 MOUNTAINEER	05/17	WENCESLAO HARO- MIJARES	20	COCHITI FOB/0700	COCHITI FOB/1900	
SMOD COCHITI		DOMINICK ORTIZ	4	COCHITI FOB/0700	COCHITI FOB/1900	
E-179 ENG3 DEER MOUNTAIN FPD	05/15	PHIL STEVENS	4	COCHITI FOB/0700	COCHITI FOB/1900	
E-173 ENG6 AZ-COF-E673	05/15	DAVID KEMPTON	6	COCHITI FOB/0700	COCHITI FOB/1900	
E-247 ENG6 11-1	05/18	CHUCK NEWMAN	4	COCHITI FOB/0700	COCHITI FOB/1900	
E-248 ENG6 CIMARRON HILLS FPD ENGINE 1340	05/18	MICHAEL WUPPER	3	COCHITI FOB/0700	COCHITI FOB/1900	
E-209 WTT2 - TERRANCE TITAS ENTERPRISES	05/17	TERRANCE TITAS	2	COCHITI FOB/0700	COCHITI FOB/1900	
WTS3 COCHITI TENDER 83		ISAIAH PHILLIPS		COCHITI FOB/0700	COCHITI FOB/1900	
E-168 DOZ2 FUEGO	05/14	GEORGE BEEN	2	COCHITI FOB/0700	COCHITI FOB/1900	
E-169 DOZ2 SIERRA VALLEY	05/14	CORLEY HENDERSON	2	COCHITI FOB/0700	COCHITI FOB/1900	
UTV 8 COCHITI				COCHITI FOB/0700	COCHITI FOB/1900	
READ COCHITI 1		EVERETTE HERRERA		COCHITI FOB/0700	COCHITI FOB/1900	
READ COCHITI 2		PHILLIP TRUJILLO		COCHITI FOB/0700	COCHITI FOB/1900	
E-62 AMBU	05/12	ARNOLDO RIVERA	2	COCHITI FOB/0700	COCHITI FOB/1900	
E-203 AMBU	05/17	LISA AXEL	2	COCHITI FOB/0700	COCHITI FOB/1900	
O-293 SOF2	05/17	FRED JONSON	1	COCHITI FOB/0700	COCHITI FOB/1900	
<b>8. Division/Group Communication Summary</b>						
Function	Channel	RX Frequency N/W	RX Tone/NAC	TX Frequency N/W	TX Tone/NAC	Mode
COMMAND	4	171.0625	146.2	162.1875	146.2	A
TACTICAL	11	166.7750 N	146.2	166.7750 N	146.2	A
AIR TO GROUND	13	166.8250 N		166.8250 N		A
<b>9. Prepared By (Resource Unit Leader)</b>		<b>Approved By (Planning Section Chief)</b>		<b>Date</b>	<b>Time</b>	
BRITTANY PHILLIPS		MISSY FORDER		05/04/2022	1800	

**Division/Group Assignment List (ICS 204 WF)**  
**Controlled Unclassified Information//Basic**

<b>1. Incident Name:</b>				<b>3.</b>			
CERRO PELADO				<b>Branch:</b>		<b>Division/Group</b>	
<b>2. Operational Period:</b> 0700 - 0700				<b>I</b>		<b>M</b>	
Date/Time From: 05/05/2022 0700 THU		Date/Time To: 05/06/2022 0700 FRI					
<b>4. Operations Personnel</b>							
<b>OPERATIONS CHIEF</b>		P. MYERS, M. DAVIS V. EDGE, C. COOK (T), J. RAMSAY (T)		<b>BRANCH DIRECTOR</b>		HEATH MORTON ANDY PASCARELLA	
<b>DIVISION/GROUP SUPERVISOR</b>		MIKE WARD					
<b>6. Control Operations/Work Assignments:</b>							
Task: Continue improving and prepping FS 289 as well as dozer and handlines on Cochiti tribal lands.							
Purpose: Limit fire spread on tribal lands using natural barriers and road systems to lessen impacts to cultural and natural resources.							
End State: Lessen the footprint of the Cerro Pelado Fire while minimizing the impacts on tribal lands.							
<b>7. Special Instructions:</b>							
<ul style="list-style-type: none"> <li>• Briefing will be held at Cochiti FOB 0700.</li> <li>• Coordinate with READ before ground disturbance.</li> <li>• Coordinate with Sandoval County, State Police, and Tribal Nations</li> <li>• Identify impassable roads with GPS locations in Field Map.</li> <li>• Do not post photos with archaeological resources that have location information.</li> <li>• Leave all gates as you found them, either opened or closed. If the gate was closed when you arrived, close it as you leave.</li> <li>• Identify IA resources off each division to support IA under TFR.</li> <li>• When responding to IA please use IA group channels. Please see IA Group 205 for appropriate channels.</li> <li>• ** IN THE EVENT OF AN IWI: CONTACT COMMUNICATIONS ON COMMAND</li> </ul>							
<b>8. Division/Group Communication Summary</b>							
Function	Channel	RX Frequency N/W	RX Tone/NAC	TX Frequency N/W	TX Tone/NAC	Mode	
COMMAND	4	171.0625	146.2	162.1875	146.2	A	
TACTICAL	11	166.7750 N	146.2	166.7750 N	146.2	A	
AIR TO GROUND	13	166.8250 N		166.8250 N		A	
<b>9. Prepared By (Resource Unit Leader)</b>			<b>Approved By (Planning Section Chief)</b>			<b>Date</b>	<b>Time</b>
BRITTANY PHILLIPS			MISSY FORDER			05/04/2022	1800

**Division/Group Assignment List (ICS 204 WF)**  
**Controlled Unclassified Information//Basic**

<b>1. Incident Name:</b>			<b>3.</b>			
CERRO PELADO			<b>Branch:</b>  <b>I</b>	<b>Division/Group</b>  <b>O</b>		
<b>2. Operational Period:</b> 0700 - 0700						
Date/Time From: 05/05/2022 0700 THU		Date/Time To: 05/06/2022 0700 FRI				
<b>4. Operations Personnel</b>						
<b>OPERATIONS CHIEF</b>		P. MYERS, M. DAVIS V. EDGE, C. COOK (T), J. RAMSAY		<b>BRANCH DIRECTOR</b>		HEATH MORTON
<b>DIVISION/GROUP SUPERVISOR</b>						
<b>5. Resources Assigned this Period</b>						
Strike Team / Task Force / Resource Designator		LWD	Leader	Number Persons	Drop Off PT./Time	Pick Up PT./Time
<b>6. Control Operations/Work Assignments:</b>						
<b>7. Special Instructions:</b>						
<ul style="list-style-type: none"> <li>• Briefing will be held at base camp 0700.</li> <li>• Coordinate with READ before ground disturbance.</li> <li>• Coordinate with Sandoval County, State Police, and Tribal Nations</li> <li>• Identify impassable roads with GPS locations in Field Map.</li> <li>• Do not post photos with archaeological resources that have location information.</li> <li>• Leave all gates as you found them, either opened or closed. If the gate was closed when you arrived, close it as you leave.</li> <li>• Identify IA resources off each division to support IA under TFR.</li> <li>• When responding to IA please use IA group channels. Please see IA Group 205 for appropriate channels.</li> <li>• ** IN THE EVENT OF AN IWI: CONTACT COMMUNICATIONS ON COMMAND</li> </ul>						
<b>8. Division/Group Communication Summary</b>						
Function	Channel	RX Frequency N/W	RX Tone/NAC	TX Frequency N/W	TX Tone/NAC	Mode
COMMAND						
TACTICAL						
LOGISTICS						
AIR TO GROUND						
<b>9. Prepared By (Resource Unit Leader)</b>			<b>Approved By (Planning Section Chief)</b>		<b>Date</b>	<b>Time</b>
BRITTANY PHILLIPS			MISSY FORDER		05/04/2022	1800



**Division/Group Assignment List (ICS 204 WF)**  
**Controlled Unclassified Information//Basic**

<b>1. Incident Name:</b>			<b>3.</b>			
CERRO PELADO			<b>Branch:</b>		<b>Division/Group</b>	
<b>2. Operational Period:</b> 0700 - 0700			<b>I</b>		<b>R</b>	
Date/Time From: 05/05/2022 0700 THU	Date/Time To: 05/06/2022 0700 FRI					
<b>4. Operations Personnel</b>						
<b>OPERATIONS CHIEF</b>		P. MYERS, M. DAVIS V. EDGE, C. COOK (T), J. RAMSAY (T)		<b>BRANCH DIRECTOR</b>		HEATH MORTON ANDY PASCARELLA (T)
<b>DIVISION/GROUP SUPERVISOR</b>		FRANK ALVES LUKE HELFENSTIEN (T)		<b>SAFETY</b>		BRAD LIDELL
<b>5. Resources Assigned this Period</b>						
Strike Team / Task Force / Resource Designator	LWD	Leader	Number Persons	Drop Off PT./Time	Pick Up PT./Time	
C-7 T1 MORMON LAKE IHC	05/08	SARA SWEENEY	21	BASE CAMP/0700	BASE CAMP/1900	
C-14 T2IA TAYLOR	05/08	VERNON JACKSON	19	BASE CAMP/0700	BASE CAMP/1900	
C-9 T2 ROCHA	05/08	JORGE DURAN	20	BASE CAMP/0700	BASE CAMP/1900	
C-18 T2 GFP	05/09	JOHN FITTS	20	BASE CAMP/0700	BASE CAMP/1900	
E-176 ENG3 CA-SHF 311	05/15	MATTHEW PUCKETT	5	BASE CAMP/0700	BASE CAMP/1900	
E-106 ENG6 GREY WILDLAND	05/09	JAKE WARDEN	3	BASE CAMP/0700	BASE CAMP/1900	
E-174 ENG6 PINO	05/15	DARIN PINO	3	BASE CAMP/0700	BASE CAMP/1900	
E-198 WTS2 G & N, L.L.C.	05/18	AARON JOYCE	1	BASE CAMP/0700	BASE CAMP/1900	
E-9 WTT2 TOUGH EQUIPMENT	05/09	JOHN CULTRIP	1	BASE CAMP/0700	BASE CAMP/1900	
E-210 WTT2 LANE	05/16	DAVID LANE	2	BASE CAMP/0700	BASE CAMP/1900	
E-103 DOZ2 WEAVER GRADING	05/09	KEVIN GAINES	2	BASE CAMP/0700	BASE CAMP/1900	
E-102 DOZ3 BALDWIN FORESTRY	05/11	DAVID BALDWIN	2	BASE CAMP/0700	BASE CAMP/1900	
E-151 GRD2 GM EMULSIONS	05/12	ERIC GIRON	1	BASE CAMP/0700	BASE CAMP/1900	
E-153 UTV				BASE CAMP/0700	BASE CAMP/1900	
O-17 REAF	05/07	BECKY BAISDEN	1	BASE CAMP/0700	BASE CAMP/1900	
O-102 REAF	05/07	JORDAN JARRETT	1	BASE CAMP/0700	BASE CAMP/1900	
O-117 REAF	05/08	LISA THOMPSON	1	BASE CAMP/0700	BASE CAMP/1900	
O-99 REMS	05/15	TANNER SMITH	4	BASE CAMP/0700	BASE CAMP/1900	
O-131 MED 3	05/16	JEFFERY MOLEN	2	BASE CAMP/0700	BASE CAMP/1900	
<b>6. Control Operations/Work Assignments:</b>						
<b>8. Division/Group Communication Summary</b>						
Function	Channel	RX Frequency N/W	RX Tone/NAC	TX Frequency N/W	TX Tone/NAC	Mode
COMMAND	2	169.5375 N	146.2	164.7125 N	146.2	A
TACTICAL	9	168.2500 N	146.2	168.2500 N	146.2	A
AIR TO GROUND	13	166.8250 N		166.8250 N		A
<b>9. Prepared By (Resource Unit Leader)</b>			<b>Approved By (Planning Section Chief)</b>		<b>Date</b>	<b>Time</b>
BRITTANY PHILLIPS			MISSY FORDER		05/04/2022	1800

## Division/Group Assignment List (ICS 204 WF)

Controlled Unclassified Information//Basic

<b>1. Incident Name:</b>				<b>3.</b>			
CERRO PELADO				<b>I</b>		<b>R</b>	
<b>2. Operational Period:</b> 0700 - 0700							
Date/Time From: 05/05/2022 0700		THU		Date/Time To: 05/06/2022 0700		FRI	
<b>4. Operations Personnel</b>							
<b>OPERATIONS CHIEF</b>		P. MYERS, M. DAVIS V. EDGE, C. COOK (T), J. RAMSAY (T)		<b>BRANCH DIRECTOR</b>		HEATH MORTON ANDY PASCARELLA (T)	
<b>DIVISION/GROUP SUPERVISOR</b>		FRANK ALVES LUKE HELFENSTIEN (T)		<b>SAFETY</b>		BRAD LIDELL	
<b>6. Control Operations/Work Assignments:</b>							
<p>Task: Improve primary lines south to the Pueblo tribal lands.                  Purpose: Keep fire in 2011 Los Conchas fire footprint.                  End State: Lessening the foot print of the Cerro Pelado fire while minimizing the impact to private lands.</p>							
<b>7. Special Instructions:</b>							
<ul style="list-style-type: none"> <li>Briefing will be held at base camp 0700.</li> <li>Coordinate with READ before ground disturbance.</li> <li>Coordinate with Sandoval County, State Police, and Tribal Nations</li> <li>Identify impassable roads with GPS locations in Field Map.</li> <li>Do not post photos with archaeological resources that have location information.</li> <li>Leave all gates as you found them, either opened or closed. If the gate was closed when you arrived, close it as you leave.</li> <li>Identify IA resources off each division to support IA under TFR.</li> <li>When responding to IA please use IA group channels. Please see IA Group 205 for appropriate channels.</li> <li><b>** IN THE EVENT OF AN IWI: CONTACT COMMUNICATIONS ON COMMAND</b></li> </ul>							
<b>8. Division/Group Communication Summary</b>							
Function	Channel	RX Frequency N/W	RX Tone/NAC	TX Frequency N/W	TX Tone/NAC	Mode	
COMMAND	2	169.5375 N	146.2	164.7125 N	146.2	A	
TACTICAL	9	168.2500 N	146.2	168.2500 N	146.2	A	
AIR TO GROUND	13	166.8250 N		166.8250 N		A	
<b>9. Prepared By (Resource Unit Leader)</b>			<b>Approved By (Planning Section Chief)</b>			<b>Date</b>	<b>Time</b>
BRITTANY PHILLIPS			MISSY FORDER			05/04/2022	1800

**Division/Group Assignment List (ICS 204 WF)**  
**Controlled Unclassified Information//Basic**

<b>1. Incident Name:</b>				<b>3.</b>			
CERRO PELADO				<b>Branch:</b>		<b>Division/Group</b>	
<b>2. Operational Period:</b> 0700 - 0700				<b>I</b>		<b>STRUCTURE</b>	
Date/Time From: 05/05/2022 0700 THU		Date/Time To: 05/06/2022 0700 FRI					
<b>4. Operations Personnel</b>							
<b>OPERATIONS CHIEF</b>		P. MYERS, M. DAVIS V. EDGE, C. COOK (T), J. RAMSAY (T)		<b>BRANCH DIRECTOR</b>		HEATH MORTON ANDY PASCARELLA (T)	
<b>DIVISION/GROUP SUPERVISOR</b>		BOURNAZIAN, MIKE					
<b>5. Resources Assigned this Period</b>							
Strike Team / Task Force / Resource Designator		LWD	Leader	Number Persons	Drop Off PT./Time	Pick Up PT./Time	
E-111 ENG3 MISSOULA CITY FIRE DEPT		05/09	RANDAL THORPE	3	BASE/0700	BASE/1900	
E-130 ENG3 COCONINO		05/06	JOEL PRESMYK	5	BASE/0700	BASE/1900	
ENG4 ENGINE 431 SNF		05/18	JOE SOUKUP	5	BASE/0700	BASE/1900	
E-142 ENG6 MT-BDF		05/05	GORDON WEGLEY	4	BASE/0700	BASE/1900	
E-212 ENG6 MARTINEZ		05/16	KEN ARINDALE	3	BASE/0700	BASE/1900	
E-199 WTS2 WATERBOYZ		05/16	ANGEL BARTON	1	BASE/0700	BASE/1900	
E-180 DOZ3		05/14	GREG GEISLER	2	BASE/0700	BASE/1900	
<b>6. Control Operations/Work Assignments:</b>							
<p>Task: Identify structures threatened by the Cerro Pelado wildfire and develop a structure protection plan in coordination with the local cooperating fire agencies. Continue structure protection on Pueblo Cochiti and Cochiti Lake.</p> <p>Purpose: Triage and protect all structures identified for structure protection needs.</p> <p>End State: Threat to identified structures has been reduced as much as practical.</p>							
<b>7. Special Instructions:</b>							
<ul style="list-style-type: none"> <li>• Briefing will be held at base camp 0700.</li> <li>• Coordinate with READ before ground disturbance.</li> <li>• Coordinate with Sandoval County, State Police, and Tribal Nations</li> <li>• Identify impassable roads with GPS locations in Field Map.</li> <li>• Do not post photos with archaeological resources that have location information.</li> <li>• Leave all gates as you found them, either opened or closed. If the gate was closed when you arrived, close it as you leave.</li> <li>• Identify IA resources off each division to support IA and TFR.</li> <li>• When responding to IA please use IA group channels. Please see IA Group 205 for appropriate channels.</li> <li>• ** IN THE EVENT OF AN IWI: CONTACT COMMUNICATIONS ON COMMAND</li> </ul>							
<b>8. Division/Group Communication Summary</b>							
Function	Channel	RX Frequency N/W	RX Tone/NAC	TX Frequency N/W	TX Tone/NAC	Mode	
COMMAND	1	169.7500 N	146.2	167.1000 N	146.2	A	
COMMAND	2	169.5375 N	146.2	164.7125 N	146.2	A	
COMMAND	4	171.0625	146.2	162.1875	146.2	A	
TACTICAL	8	168.6000 N	146.2	168.6000 N	146.2	A	
AIR TO GROUND	13	166.8250 N		166.8250 N		A	
<b>9. Prepared By (Resource Unit Leader)</b>			<b>Approved By (Planning Section Chief)</b>			<b>Date</b>	<b>Time</b>
BRITTANY PHILLIPS			MISSY FORDER			05/04/2022	1800

**Division/Group Assignment List (ICS 204 WF)**  
**Controlled Unclassified Information//Basic**

<b>1. Incident Name:</b>			<b>3.</b>			
CERRO PELADO			<b>Branch:</b>		<b>Division/Group</b>	
<b>2. Operational Period:</b> 0700 - 0700			<b>I</b>		<b>IA</b>	
Date/Time From: 05/05/2022 0700	THU	Date/Time To: 05/06/2022 0700				
<b>4. Operations Personnel</b>						
<b>OPERATIONS CHIEF</b>		P. MYERS, M. DAVIS V. EDGE, C. COOK (T), J. RAMSAY (T)		<b>BRANCH DIRECTOR</b>		HEATH MORTON ANDY PASCARELLA (T)
<b>DIVISION/GROUP SUPERVISOR</b>		KRIS SCHROEDER				
<b>5. Resources Assigned this Period</b>						
Strike Team / Task Force / Resource Designator	LWD	Leader	Number Persons	Drop Off PT./Time	Pick Up PT./Time	
O-108 TFLD	05/11	WILL BERNARD	1	BASE CAMP/0700	BASE CAMP/1900	
C-3 T2 BLUE MOUNTAIN	05/10	JORGE PEREZ	20	BASE CAMP/0700	BASE CAMP/1900	
E-177 ENG3 376	05/14	BRIAN HENDRICKS	6	BASE CAMP/0700	BASE CAMP/1900	
E-108 ENG6 HART VENTURES	05/11	KYLE COLTEN	3	BASE CAMP/0700	BASE CAMP/1900	
E-140 ENG6 THE GENERAL	05/11	PAUL ANDERSON	3	BASE CAMP/0700	BASE CAMP/1900	
E-143 ENG6	05/10	AUSTIN STOVER	2	BASE CAMP/0700	BASE CAMP/1900	
E-144 ENG6 GUNNISON FPD	05/11	BEN BRACK	4	BASE CAMP/0700	BASE CAMP/1900	
E-150 ENG6 SANDOVAL COUNTY FD BRUSH 22	05/10	HARRIS TOYA	3	BASE CAMP/0700	BASE CAMP/1900	
E-146 WTT1 B&G FORESTRY	05/05	BILL WEST	2	BASE CAMP/0700	BASE CAMP/1900	
E-113 WTS2 BIG CEDAR	05/10	BEN ANDERBERG	1	BASE CAMP/0700	BASE CAMP/1900	
E-166 DOZ2 KIT CONTRACTING	05/14	CHRISTOPHER BOTTOMLY	2	BASE CAMP/0700	BASE CAMP/1900	
E-206 DOZ2 EMERY FARM INC	05/17	BURT ALLEN	2	BASE CAMP/0700	BASE CAMP/1900	
O-202 SOFR	05/15	LANCE DELGADO	1	BASE CAMP/0700	BASE CAMP/1900	
<b>6. Control Operations/Work Assignments:</b>						
Task: Ready stand-by for initial attack inside TFR and as requested by cooperators.						
Purpose: Provide initial attack support to assigned response area.						
End State: Provide initial attack support for the TFR and surrounding cooperators.						
<b>7. Special Instructions:</b>						
<ul style="list-style-type: none"> <li>Briefing will be held at base camp 0700.</li> <li>Provide support for the Freelove Fire on request of agency.</li> <li>Coordinate with READ before ground disturbance.</li> </ul>						
<b>8. Division/Group Communication Summary</b>						
Function	Channel	RX Frequency N/W	RX Tone/NAC	TX Frequency N/W	TX Tone/NAC	Mode
COMMAND	1	169.7500 N	146.2	167.1000 N	146.2	A
COMMAND	2	169.5375 N	146.2	164.7125 N	146.2	A
COMMAND	4	171.0625	146.2	162.1875	146.2	A
TACTICAL	10	166.7250 N	146.2	166.7250 N	146.2	A
AIR TO GROUND	12	168.3125 N		168.3125 N		A
<b>9. Prepared By (Resource Unit Leader)</b>			<b>Approved By (Planning Section Chief)</b>		<b>Date</b>	<b>Time</b>
BRITTANY PHILLIPS			MISSY FORDER		05/04/2022	1800

**Division/Group Assignment List (ICS 204 WF)**  
**Controlled Unclassified Information//Basic**

<b>1. Incident Name:</b>		<b>3.</b>	
CERRO PELADO		<b>Branch:</b>  <b>I</b>	<b>Division/Group</b>  <b>IA</b>
<b>2. Operational Period:</b> 0700 - 0700			
Date/Time From: 05/05/2022 0700	THU	Date/Time To: 05/06/2022 0700	FRI
<b>4. Operations Personnel</b>			
<b>OPERATIONS CHIEF</b>	P. MYERS, M. DAVIS V. EDGE, C. COOK (T), J. RAMSAY (T)	<b>BRANCH DIRECTOR</b>	HEATH MORTON ANDY PASCARELLA (T)
<b>DIVISION/GROUP SUPERVISOR</b>	KRIS SCHROEDER		

**7. Special Instructions:**

- Coordinate with Sandoval County, State Police, and Tribal Nations
- Identify impassable roads with GPS locations in Field Map.
- Do not post photos with archaeological resources that have location information.
- Leave all gates as you found them, either opened or closed. If the gate was closed when you arrived, close it as you leave.
- Identify IA resources off each division to support IA under TFR.
- When responding to IA please use IA group channels. Please see IA Group 205 for appropriate channels.
- **\*\* IN THE EVENT OF AN IWI: CONTACT COMMUNICATIONS ON COMMAND**

<b>8. Division/Group Communication Summary</b>						
Function	Channel	RX Frequency N/W	RX Tone/NAC	TX Frequency N/W	TX Tone/NAC	Mode
COMMAND	1	169.7500 N	146.2	167.1000 N	146.2	A
COMMAND	2	169.5375 N	146.2	164.7125 N	146.2	A
COMMAND	4	171.0625	146.2	162.1875	146.2	A
TACTICAL	10	166.7250 N	146.2	166.7250 N	146.2	A
AIR TO GROUND	12	168.3125 N		168.3125 N		A
<b>9. Prepared By (Resource Unit Leader)</b>		<b>Approved By (Planning Section Chief)</b>		<b>Date</b>	<b>Time</b>	
BRITTANY PHILLIPS		MISSY FORDER		05/04/2022	1800	

**Division/Group Assignment List (ICS 204 WF)**  
**Controlled Unclassified Information//Basic**

<b>1. Incident Name:</b>			<b>3.</b>			
CERRO PELADO			<b>Branch:</b>		<b>Division/Group</b>	
<b>2. Operational Period:</b> 0700 - 0700			<b>II</b>		<b>NIGHT</b>	
Date/Time From: 05/05/2022 0700	THU	Date/Time To: 05/06/2022 0700				
<b>4. Operations Personnel</b>						
<b>OPERATIONS CHIEF</b>		P. MYERS, M. DAVIS V. EDGE, C. COOK (T), J.RAMSAY (T)		<b>BRANCH DIRECTOR</b>		CORDELL TAYLOR
<b>DIVISION/GROUP SUPERVISOR</b>		AARON EDWARDS				
<b>5. Resources Assigned this Period</b>						
Strike Team / Task Force / Resource Designator	LWD	Leader	Number Persons	Drop Off PT./Time	Pick Up PT./Time	
C-22.1 TFLD	05/07	TIM MEMMER	1	BASE CAMP/1900	BASE CAMP/0700	
C-22 HC1 CARSON HOTSHOTS IHC	05/07	NICOLL, CORDOVA, GALVAN	18	BASE CAMP/1900	BASE CAMP/0700	
C-24 T2 TORRES	05/08	ISMAEL LOPEZ	20	BASE CAMP/1900	BASE CAMP/0700	
E-110 - ENG3 OUTBACK FIREFIGHTING	05/10	JIM REILLY	3	BASE CAMP/1900	BASE CAMP/0700	
E-175 ENG4 FIREANT	05/15	CHRIS ANTHIS	3	BASE CAMP/1900	BASE CAMP/0700	
E-170 ENG5 ELEPHANT BUTTE	05/14	RUSSELL THRUN	3	BASE CAMP/1900	BASE CAMP/0700	
E-1 ENG6 CARBONDALE	05/07	SCOTT EVANS	3	BASE CAMP/1900	BASE CAMP/0700	
E-171 ENG6 WILDLAND FIRE SERVICES	05/15	DAVID HOGREFE	3	BASE CAMP/1900	BASE CAMP/0700	
E-172 ENG6 WILDLANDS FIRE SERVICE	05/17	JASON STANLEY	3	BASE CAMP/1900	BASE CAMP/0700	
E-178 ENG6 UT	05/13	CHRIS LEWIS	2	BASE CAMP/1900	BASE CAMP/0700	
E-207 WTS2	05/17			BASE CAMP/1900	BASE CAMP/0700	
E-208 WTS2 CUTTING EDGE	05/17	LAWRENCE MAY	1	BASE CAMP/1900	BASE CAMP/0700	
E-167 DOZ2 NORTHSTATE HEAVY EQUIPMENT	05/16	JORDAN NICKELL	2	BASE CAMP/1900	BASE CAMP/0700	
E-191 MED4	05/14	M COUTRNEY	2	BASE CAMP/1900	BASE CAMP/0700	
E-59 AMBU	05/17	SAGE STEWART	2	BASE CAMP/1900	BASE CAMP/0700	
E-190 AMBU	05/17	JACKSON PIXLEY	2	BASE CAMP/1900	BASE CAMP/0700	
E-203 AMBU	05/17	DAN CHANDLER	4	BASE CAMP/1900	BASE CAMP/0700	
0-200 SOF2	05/15	JAMES GRANT	1	BASE CAMP/1900	BASE CAMP/0700	
<b>6. Control Operations/Work Assignments:</b>						
<b>8. Division/Group Communication Summary</b>						
Function	Channel	RX Frequency N/W	RX Tone/NAC	TX Frequency N/W	TX Tone/NAC	Mode
COMMAND	1	169.7500 N	146.2	167.1000 N	146.2	A
COMMAND	2	169.5375 N	146.2	164.7125 N	146.2	A
COMMAND	4	171.0625	146.2	162.1875	146.2	A
TACTICAL	11	166.7750 N	146.2	166.7750 N	146.2	A
<b>9. Prepared By (Resource Unit Leader)</b>			<b>Approved By (Planning Section Chief)</b>		<b>Date</b>	<b>Time</b>
BRITTANY PHILLIPS			MISSY FORDER		05/04/2022	1800

**Division/Group Assignment List (ICS 204 WF)**  
**Controlled Unclassified Information//Basic**


<b>1. Incident Name:</b>			<b>3.</b>			
CERRO PELADO			<b>Branch:</b>  <b>II</b>	<b>Division/Group</b>  <b>NIGHT</b>		
<b>2. Operational Period:</b> 0700 - 0700						
Date/Time From: 05/05/2022 0700	THU	Date/Time To: 05/06/2022 0700	FRI			
<b>4. Operations Personnel</b>						
<b>OPERATIONS CHIEF</b>	P. MYERS, M. DAVIS V. EDGE, C. COOK (T), J.RAMSAY (T)		<b>BRANCH DIRECTOR</b>	CORDELL TAYLOR		
<b>DIVISION/GROUP SUPERVISOR</b>	AARON EDWARDS					
<b>6. Control Operations/Work Assignments:</b>						
Task: Patrol and monitor along fire lines focusing on values at risk and critical areas of concern as directed from day shift. Engage as needed along fire perimeter.						
Purpose: Ensure safety of fire fighters and protect values at risk						
End State: Safety and values at risk are protected. Priority areas of the fire are secured to provide a successful transition with day shift.						
<b>7. Special Instructions:</b>						
<ul style="list-style-type: none"> <li>• Briefing will be held at base camp 1800.</li> <li>• Coordinate with READ before ground disturbance.</li> <li>• Coordinate with Sandoval County, State Police, and Tribal Nations</li> <li>• Identify impassable roads with GPS locations in Field Map.</li> <li>• Do not post photos with archaeological resources that have location information.</li> <li>• Leave all gates as you found them, either opened or closed. If the gate was closed when you arrived, close it as you leave.</li> <li>• Identify IA resources off each division to support IA under TFR.</li> <li>• When responding to IA please use IA group channels. Please see IA Group 205 for appropriate channels.</li> <li>• ** IN THE EVENT OF AN IWI: CONTACT COMMUNICATIONS ON COMMAND</li> </ul>						
<b>8. Division/Group Communication Summary</b>						
Function	Channel	RX Frequency N/W	RX Tone/NAC	TX Frequency N/W	TX Tone/NAC	Mode
COMMAND	1	169.7500 N	146.2	167.1000 N	146.2	A
COMMAND	2	169.5375 N	146.2	164.7125 N	146.2	A
COMMAND	4	171.0625	146.2	162.1875	146.2	A
TACTICAL	11	166.7750 N	146.2	166.7750 N	146.2	A
<b>9. Prepared By (Resource Unit Leader)</b>			<b>Approved By (Planning Section Chief)</b>		<b>Date</b>	<b>Time</b>
BRITTANY PHILLIPS			MISSY FORDER		05/04/2022	1800

INCIDENT RADIO COMMUNICATIONS PLAN I-205				1. INCIDENT NAME			2. DATE/TIME PREPARED			3. OPERATIONAL PERIOD DATE/TIME		
				<b>Cerro Pelado Main Group</b>			5/04/2022 1700			05/05/22 0700 - 05/06/22 0700		
4. BASIC RADIO CHANNEL UTILIZATION												
Ch #	Function	Channel Name	Assignment	RX Freq	N/W	RX Tone/NAC	TX Freq	N/W	TX Tone/NAC	Mode Analog (A) Digital (D) Mixed (M)	Remarks	
1	Command	CMD 1	DIV A/Z	169.7500	N	146.2	167.1000	N	146.2	A	CERRO PELADO	
2	Command	CMD 2	DIV R	169.5375	N	146.2	164.7125	N	146.2	A	ROAD 10/270 INTERSECTION	
3	Command	CMD 3	ICP	170.4125	N	146.2	165.9625	N	146.2	A	135 ROAD	
4	Command	CMD 4	DIV F/M	171.0625	N	146.2	162.1875	n	146.2	A	St Peter's Dome	
5		UNASSIGNED										
6	Tactical	TAC 1	DIV F	168.0500	N	146.2	168.0500	N	146.2	A		
7	Tactical	TAC 2	DIV A/Z	168.2000	N	146.2	168.2000	N	146.2	A		
8	Tactical	TAC 3	STRUCTURAL PROTECTION	168.6000	N	146.2	168.6000	N	146.2	A		
9	Tactical	TAC 4	DIV R	168.2500	N	146.2	168.2500	N	146.2	A		
10	Tactical	TAC 5	IA	166.7250	N	146.2	166.7250	N	146.2	A		
11	Tactical	TAC 6	DIV M	166.7750	N	146.2	166.7750	N	146.2	A	Night Shift	
12	Air Ground	A/G 51		168.3125	N		168.3125	N		A	Initial Attack / Local Air to Ground	
13	Air Ground	A/G PRI		166.8250	N		166.8250	N		A		
14	Air Ground	A/G SEC		168.7375	N		168.7375	N		A		
15	Medivac	VMED 28		155.3400	N		155.3400	N	156.7	A	Air Ambulance	
16	AIRGUARD			168.6250	N		168.6250	N	110.9	A		
<b>5. Special Instructions:</b>		USE HUMAN REPEATER WHEN NECESSARY. IF ASSIGNED COMMAND CHANNEL DOES NOT WORK TRY THE OTHER ONE.										
<b>6. I-205 Prepared By: Communications Unit Leader</b>			<b>Name: Barry Stearns</b>					<b>Signature: <i>Barry H Stearns</i></b>				



INCIDENT RADIO COMMUNICATIONS PLAN I-205				1. INCIDENT NAME			2. DATE/TIME PREPARED			3. OPERATIONAL PERIOD DATE/TIME		
				Cerro Pelado IA Group			5/04/2022 1700			05/05/22 0700 - 05/06/22 0700		
4. BASIC RADIO CHANNEL UTILIZATION												
Ch #	Function	Channel Name	Assignment	RX Freq	N/W	RX Tone/NAC	TX Freq	N/W	TX Tone/NAC	Mode Analog (A) Digital (D) Mixed (M)	Remarks	
1	Command	CMD 1	DIV A/Z	169.7500	N	146.2	167.1000	N	146.2	A	CERRO PELADO	
2	Command	CMD 2	DIV R	169.5375	N	146.2	164.7125	N	146.2	A	ROAD 10/270 INTERSECTION	
3	Command	CMD 3	ICP	170.4125	N	146.2	165.9625	N	146.2	A	135 ROAD	
4	Command	CMD 4	DIV F/M	171.0625	N	146.2	162.1875	n	146.2	A	St Peter's Dome	
5		UNASSIGNED										
6	Tactical	TAC 5	IA	166.7250	N	146.2	166.7250	N	146.2	A		
7	Dispatch	PELADO	IA	172.3000	N	NONE	165.0125	N	131.8	A	Santa Fe Dispatch	
8	Tactical	R3 TAC 1	IA	167.5500	N	NONE	167.5500	N	NONE	A		
9	Tactical	R3 TAC 2	IA	168.6750	N	NONE	168.6750	N	NONE	A		
10	Tactical	R3 TAC 3	IA	168.7750	N	NONE	168.7750	N	NONE	A		
11		BLANK										
12	Air Ground	A/G 51		168.3125	N	NONE	168.3125	N	NONE	A	INITIAL ATTACK/LOCAL A/G	
13	Air Ground	A/G PRI		166.8250	N	NONE	166.8250	N	NONE	A		
14	Air Ground	A/G SEC		168.7375	N		168.7375	N		A		
15	Medivac	VMED 28		155.3400	N		155.3400	N	156.7	A	Air Ambulance	
16	AIRGUARD			168.6250	N		168.6250	N	110.9	A		
<b>5. Special Instructions:</b>		USE HUMAN REPEATER WHEN NECESSARY. IF ASSIGNED COMMAND CHANNEL DOES NOT WORK TRY THE OTHER ONE.										
<b>6. I-205 Prepared By: Communications Unit Leader</b>			<b>Name: Barry Stearns</b>					<b>Signature:</b> <i>Barry H Stearns</i>				

<b>1. INCIDENT NAME:</b> <b>Cerro Pelado</b>	<b>2. OPS PERIOD DATE:</b> 5/5/22	<b>START TIME:</b> 0900	<b>END TIME:</b> 2030	<b>SUNRISE</b> 0608	<b>SUNSET</b> 1953
---	--------------------------------------	----------------------------	--------------------------	------------------------	-----------------------

<b>3. REMARKS and RISK MITIGATIONS:</b> All missions will be analyzed in terms of hazards and risks. Insure to brief for all IA missions to include new frequencies, ground contacts and other aircraft. High level to low level recon of each new LZ/Dipsite  Retardant Avoidance areas:	<b>4. READY ALERT AIRCRAFT:</b>  IA 7HE  See Medical Plan	<b>5. TFR # 2/6919</b>  Freq: 118.825 Surface ≥ 14,000' MSL See NOTAM for Poly
---	---	--

6. PERSONNEL	NAME	PHONE #	7. FREQUENCIES	AM	FM	8. FIXED-WING
AOBD	Lynne Howard	678-699-3266	A/A (Fixed/TFR)	118.825		<b>Air Attack:</b> 78NA / 690B / Base: ABQ
ASGS ASGS	John Mason Brian Drinville	865-336-6664 505-506-5795	A/A (Rotor)	121.325		<b>Lead Planes/Airtankers/Scoopers - Order through Air Attack. If air attack is not up order through AOBD.</b>
ATGS ATGS-T	Todd Pease Adam Soper	541-408-2309				<b>Scoopers:</b> 260 / CL-415 / Base: SAF 263 / CL-415 / Base: SAF <b>Manager:</b> Patrick Kane 530-363-8028
HEBM (Santa Fe)	Brian Kleisen	505-467-9351	A/G Primary (Command)		166.8250	<b>TA49</b> 35° 49.6644'N x 106° 19.0908'W  <b>Santa Fe Airport (SAF)</b> 35° 37.02'N x 106° 05'.22'W  <b>Costs to:</b> <a href="mailto:2022.cerrodelado.finance@firenet.gov">2022.cerrodelado.finance@firenet.gov</a>
HMGB (7HE)	Josh Brookshire	505-670-9385	A/G Secondary (Tactical)		168.7375	
HMGB (8MB)	Freddie Abreu	505-908-4392	A/G 51 (IA)		168.3125	
HMGB (0PF)	Luke Copeland	661-860-6997				
HMGB (0BH)	Michael Hottel	719-900-8828	DECK (Santa Fe)		163.100	
HMGB (3CH)	Jason Combs	812-608-1266				
Santa Fe Dispatch	Tessa	505-438-5600	AIRGUARD (emergency only)		168.6250 TX Tone110.9	

**9.HELICOPTERS**

FAA N#	T Y	MAKE/ MODEL	BASE	AVAIL	START	REMARKS	FAA N#	T Y	MAKE/ MODEL	BASE	AVAIL	START	REMARKS
7HE	3	AS350B3	TA49	0800	0830	Not Assigned Forest IA Ship	Guard (Lobo 18)	1	UH60	SAF (ANG Base)	---	---	Medivac 1900-0700
118MB	3	AS350B3	SAF	0800	0830	Recon / Bucket	Guard (Lobo 29)	1	UH60	SAF (ANG Base)	---	---	VIP Flight Hermits
20PF	2	212HP	SAF	0800	0830	Recon / Bucket	Guard (Lobo 31)	1	UH60	SAF (ANG Base)	0800	0830	Bucket
80BH	1	EH60A	SAF	0800	0830	Bucket	Guard (Lobo 59)	1	UH60	SAF (ANG Base)	0800	0830	Bucket
473CH	1	CH-47D	SAF	0800	0830	Bucket	718HT	1	CH54B	SAF	TBD	TBD	Tanked
792HT	1	CH-54A	SAF	0830	0830	Bucket	720HT	1	CH54B	SAF	TBD	TBD	Tanked

## CERRO PELADO FIRE LIAISON CONTACT INFORMATION

Stephanie Allison: LOFR-Lead      662-763-8374      [stephanie.allison@usda.gov](mailto:stephanie.allison@usda.gov)  
Rhea Whalen: LOFR(t)      843-412-3571      [rhea.whalen@usda.gov](mailto:rhea.whalen@usda.gov)

**“We greatly value and appreciate all the incredible work and long, arduous hours firefighters are putting in to protect our aboriginal lands. We appreciate you beyond words. As Native people we have an inseparable bond with these lands both past and present. As such, please remember to leave intact and not remove or collect any cultural items such as historic arrow heads and broken pieces of pottery. Please leave them as they lay for the benefit of past, present and future generations.”**

- Governor J. Michael Chavarria, Pueblo of Santa Clara



### FIRE INFORMATION

<https://inciweb.nwcg.gov/incident/8075/>

<https://www.facebook.com/2022.cerropeladofire>

<https://twitter.com/SantaFeNF>

Phone-505-312-4593

We are looking for pictures of the Fire especially those of firefighters and equipment in action, structure protection and scenic shots of the fire. Please mail to [2022.CerroPelado@firenet.gov](mailto:2022.CerroPelado@firenet.gov)



### USFS Chief’s 2022 Wildfire Letter of Intent



Cerro Pelado Fire  
Human Resource Message  
May 5, 2022

Thought for the Day  
**FIRE**

Fatigue..... Be aware of fatigue having a negative impact on your conduct and speech.

Integrity..... Integrity and Honesty are vital on a fire. If you mess up, fess up, whatever you did can most likely be fixed if you report it as soon as you are aware of it.

Respect..... Treat others as you would like to be treated

Example..... Set an example. Realize you influence others around you, therefore, always conduct yourself in a professional and competent manner, while enjoying your work!

***Do the difficult things while they are easy, and do the great things while they are small. A journey of a thousand miles must begin with a single step.*** – Lao Tzu-

Janine Summy, Human Resource Specialist, 509-429-1206

# CERRO PELADO FIRE

## Finance

Please see us after briefing

Below resources call Finance and ask for Gemaa



Please **e-mail** all documents that pertain to your assignment to the Cerro Pelado inbox.

[2022.cerropelado.finance@firenet.gov](mailto:2022.cerropelado.finance@firenet.gov)

Use the following format on the email subject line:  
(Example: TIME/O-200/SBear/Safety)

**Contact Finance Section at 720-527-2533**

### Required Financial Documents:

Agency Overhead	Agency ADs / EFFs	VIPR Resources	Contract / Agency Crews	Cooperators
Resource Order Signed CTRs	Resource Order Casual Hire Form Signed CTRs	Resource Order VIPR Agreement Schedule of Items Inspections Signed STs	Resource Order Manifest Agreement / Contract Schedule of Items Inspections Signed CTRs	Resource Order Agreement Signed STs /CTRs



# ***Training Specialist Cerro Pelado***

**The Training Specialist is working remotely. Training Specialist contact information for the Cerro Pelado Fire is:**

- Robert Rivelle
- Most important; If any Trainee or Trainer has any questions or concerns, call/text: 707.498.1761 **anytime**.
- Email: robert\_rivelle@nps.gov

## **How to register as a Trainee:**

1. Use the QR code below to register. If you're unable to register using the QR code, please call 707.498.1761 anytime.
2. Once registered, you will receive text and email updates.

## **How to close-out your training assignment:**

1. **Trainer:** Complete and Evaluation Record in the back of the Position Task Book and make as many entries as possible within the individual tasks. Discuss this with your Trainee.
2. **Trainer:** Complete an individual performance rating (ICS 225) and go over the performance rating with your Trainee.
3. **Trainee:** Text a photo or email your individual performance rating (ICS 225) to the Training Specialist.
4. **Trainee:** Complete the Trainee exit questions at the QR code below.
5. **Trainee:** Once 1-4 are completed, the Trainee and the Training Specialist will have a brief conversation to discuss the Task Book and assignment with the Trainee.
6. **Done**, except for safe travels home!

### **Trainee Registration**



### **Trainee Exit Questions**



# Last Work Day

Incident: CERRO PELADO US-NM-SNF-  
05/05/2022 - 05/08/2022

05/05/2022

## EQUIPMENT

ENG5	E-5	ENG5 - STONE MOUNTAIN FIRE
ENG6	E-142	ENGINE - T6 - MT-BDF - 72 (MT-DDC)
WTT1	E-146	WTS3 - B&G FORESTRY, LLC - 1FUPYCYB2HH274482

## OVERHEAD

FDUL	O-90	LEGGINS, CLYDE
OSC2	O-91	RAMSAY, JOHN G
PIO2	O-80	NICHOLS, JOHN C
PIOF	O-79	LAMB, LENORE
RCDM	O-56	COMBS, CHRISTOPHER
SMOD	O-123	MODULE - SUPPRESSION - BERNALILLO DISTRICT - N6S

05/06/2022

## CREWS

HC2I	C-26	PATRICK ENVIRONMENTAL, INC. - NCC - 18A
------	------	---

## EQUIPMENT

ENG3	E-130	ENGINE - T3 - ENGINE - 4-62 (E-4-62 - 7037 - FREIGHTL
ENG4	E-129	ENGINE - T4 - NMRPD - ENGINE 1441

ENG6	E-155	ENGINE-T6 -NMN6S - LOS ALAMOS FD - FORD F550 - BRUS
UTV	E-128	ENG7 - NMN6S - LOS ALAMOS FD - POLARIS 2 - ET7

## OVERHEAD

GISS	O-125	SHELLEY, MICHAEL B
ITSS	O-83	WEBB, WALTER K
LSC1	O-163	BROWNING, SALLY SARA
RESL	O-124	SOBIESKI, SUE ANN
SCKN	O-126	PARKER, SUSAN ELIZABETH

# Last Work Day

Incident: CERRO PELADO US-NM-SNF-  
05/05/2022 - 05/08/2022

05/07/2022

## CREWS

HC1	C-22	CARSON HOTSHOTS IHC
HC2	C-1	PHOENIX CREW 63

## EQUIPMENT

CSU	E-98	JA COPY PRINTING SVC'S
ENG4	E-3	ENG4 - LAW, DANA (SUNDANCE)- 1HTSEAAR5VH464314
ENG6	E-1	ENG6 - CARBONDALE AND RURAL FPD (22) - B 84
WTS2	E-8	WTS2 - FRANKLIN-OWENS, DON JESSE

## OVERHEAD

COML	O-81	RADZIVILL, DAVID BRUCE
FACL	O-84	RICKARD, JAMES
HEBM	O-158	KLIESEN, BRIAN
PIO1	O-76	STRAWSER, BONNIE
READ	O-101	SILVA, ANDRE M
REAF	O-17	BAISDEN, REBECCA

05/08/2022

## CREWS

HC1	C-7	MORMON LAKE IHC
HC2	C-9	CAYICC - 11 - 213 - ROCHA
HC2	C-12	BIRRUETA REFORESTATION - T2C007
HC2	C-19	CAYICC - 14 - 186 - PACIFIC OASIS, INC. - PACO#11
HC2	C-24	CAYICC - 12 - 231 - TORRES CONTRACTING, INC. - CREW

## EQUIPMENT

ENG6	E-2	ENGINE - T6 - DEBEQUE FPD - BRUSH 82 (DEBEQUE FIRE
ENG6	E-105	ENG6 - RAMOS, EAGLE
HNDW	E-15	HND2 - RLA HOLDINGS INC
HNDW	E-16	HND2 - RLA HOLDINGS INC
HNDW	E-17	HND2 - FISHCLAN ENTERPRISES
POT3	E-7	POT3 - RLA HOLDINGS INC
WTS2	E-115	WTS2 - ASPLIN ENTERPRISE LLC

## OVERHEAD

AADM	O-16	YEN, LESLEY L
FDUL	O-234	NAUMANN, JEFFREY C
GISS	O-87	KIRSCH, ANDY
OSC2	O-92	ALVES, FRANK JOHN
PIO1	O-18	LINDBERY, MICHAEL G
SOF1	O-95	LIDELL, RICHARD BRADLEY
SOF1	O-96	STONE, DAVID LAWRENCE



# **Cerro Pelado Fire Demob Unit**

## **Demob Day Approaching?**

**DEMOB HOURS OF OPERATION: 0730 -2200**

720-584-9090 or email:

[2022.cerropelado.demob@firenet.gov](mailto:2022.cerropelado.demob@firenet.gov)

1. Ensure that your supervisor has released you from the incident at least 24 hours in advance.
2. Contact FINANCE 24 hours prior to give them a heads-up you are departing: Phone: 720-527-2533
3. Turn in any outstanding CTRs/Shift Tickets. Make sure they are SIGNED.
4. Confirm there is no missing financial documentation. (See Finance Page for full information)

**For Crew Swaps, scan this code:**



### ***Need Air Travel to get Home?***

**IF YOUR RETURN METHOD OF TRAVEL IS BY AIR, CONTACT DMOB AT  
LEAST 72-HOURS BEFORE DEMOB DAY**

**Email: Include Gender, Name EXACTLY as it appears on your drivers  
license, Date of Birth, Departure & Final Destination Airport, city for  
Rental Car Return, your email and phone number  
to: [2022.cerropelado.demob@firenet.gov](mailto:2022.cerropelado.demob@firenet.gov)**

**AIR TRAVEL PHONE: 720-584-9090**

# **Cerro Pelado Demob Instructions**

## **On your Demob Day**

### **STEP 1**

Ensure that your supervisor has released you from the incident at least 24 hours in advance.

### **STEP 2**

**SUPPLY** – Return gear and supplies.

- If nothing to turn in, contact supply to clear you.

**GROUND SUPPORT** – Return pool NERV rentals, receive an inspection, etc.

- Be sure to get inspected.

**COMMUNICATIONS** – Return communications equipment

### **STEP 3**

**FINANCE** – To finalize your finance paperwork, do the following:

- **Please call 720-527-2533 to initiate your final OF-288 or OF-286.**
  - **Virtual Demob, please email your final CTR/ST noting Final CTR/ST in the subject line of the email, please include your cell phone number. Cerro Pelado Finance email [2022.cerropelado.finance@firenet.gov](mailto:2022.cerropelado.finance@firenet.gov)**
  - **In-Person Demob: If you are unable to do a virtual demob, please arrange for an in person demob at the ICP. *Please keep your hard copy CTRs/STs to be turned in in-person.***

***You need your final, signed OF-288 Time Report or OF-286 Invoice BEFORE starting travel.***

### **STEP 4**

**Contact DMOB at 720-584-9090** and DMOB will verify that you have completed check- out. Be prepared to talk about your actual departure date and time, your anticipated arrival date and time, and where you will be staying if travel includes overnight stops away from fire camp.

**You must complete all four steps to be released in IROC.**

## Logistics

Communications will available after briefing at Base Camp and South FOB.

## Ordering Process

Orders should be sent to the below ORDM's by 1300 for Cache Orders. For all other orders please have orders to ORDM's by 0800 hours or 1500 hours. Orders should be routed as shown below:

2022.cerropelado.ordering@firenet.gov

**Logistics:** Sally Browning sbrowning50@gmail.com

Jane Artega 530-957-3558

**Support Branch Director:** Base Camp: Joe Walker 601-201-1776

**Facilities Unit Contact:** Base Camp: Jimmy Rickard 706-308-2015

ICP: Susanne Adams 715-783-0291

**Ground Support:** Jay Aron 720-584-8468

**Supply Unit::** Tom Piper 727-514-5513

**Medical Unit** Fred Adler 479-238-6064 or Nick Arnett 408-888-1900

**Security Manager:** Karen Bradford 423-851-4206

**Food Unit:** Clyde Leggins 720-584-2569

**Communications:** Barry Stearns 954-553-6544

**South FOB:** Sean Brown 970-318-8594

Jeff Neuman 208-681-5701

**Fuel Truck Hours** 0630 to 0900 and 1800 to 2100

3 Fuel Tenders will be available, they will be located at the Banco Bonito Staging area and located at Base Camp near lunch refer. The third fuel tender is located at South FOB.

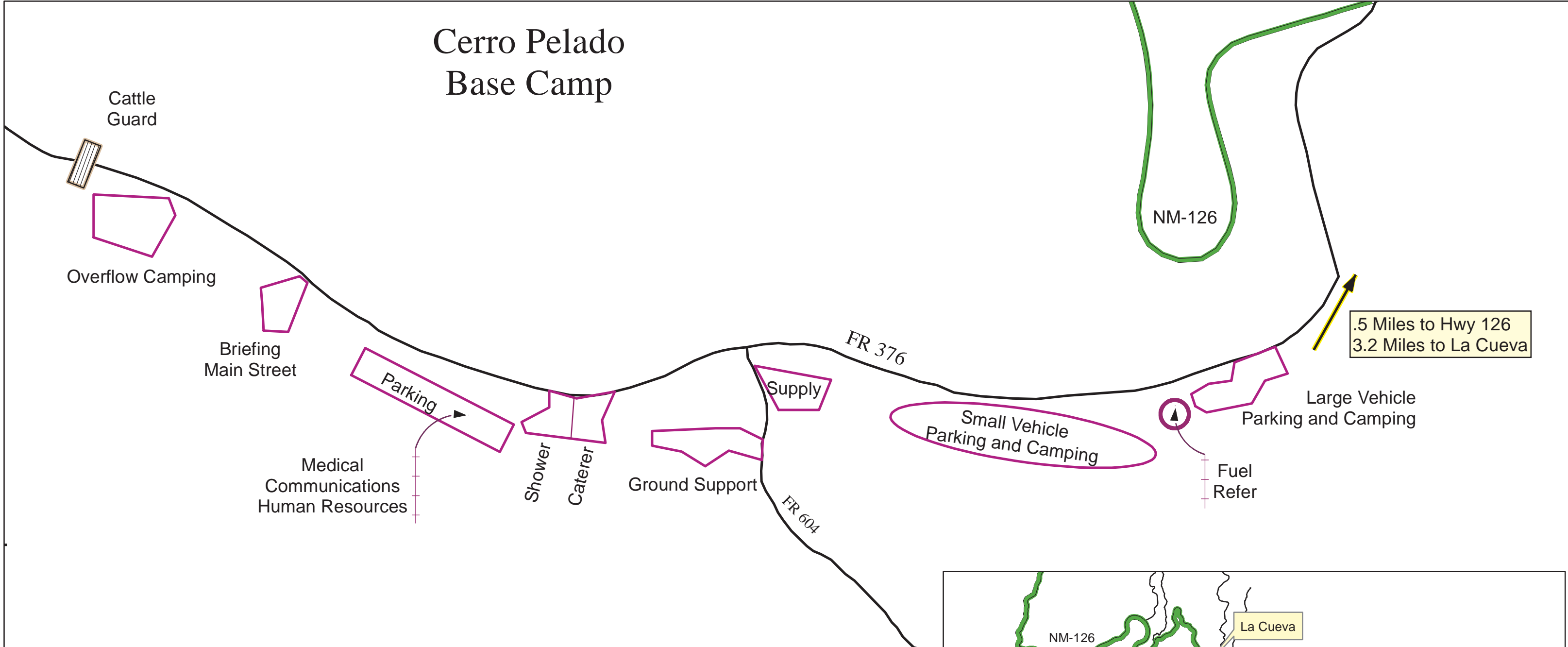
**2 Showers** are available: one at the Base Camp located on Forest Service Road 376 (mile marker 35).; the other shower is at South FOB.

**Shower Hours:** 0600 to 1200 and 1400 to 2200

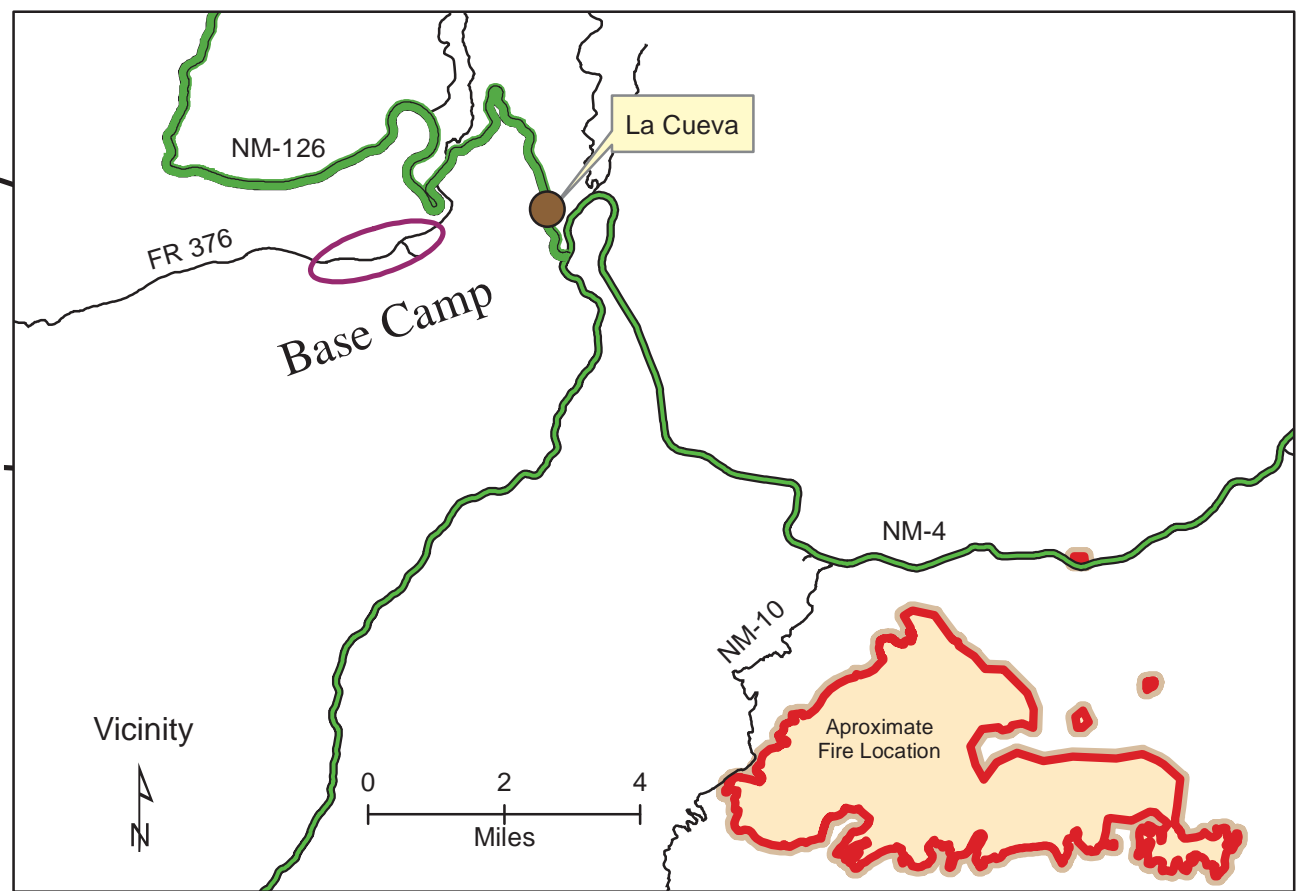
**Night Shift:** Breakfast will be served at the Hummingbird Music Camp @ 0900 and dinners at Base Camp @ 1700

2 Caterers are available: one at Base Camp and one at South FOB.

# Cerro Pelado Base Camp



.5 Miles to Hwy 126  
3.2 Miles to La Cueva

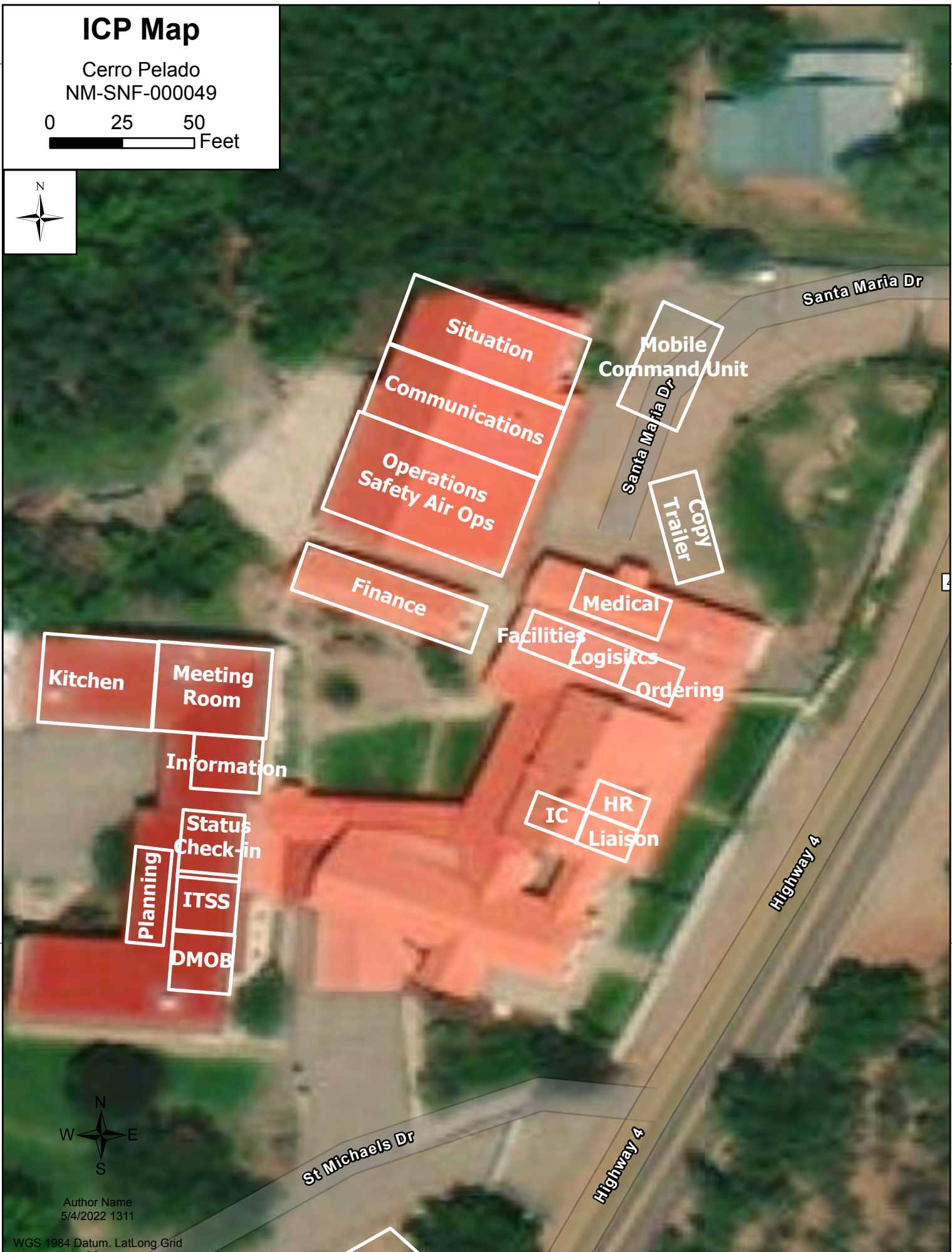
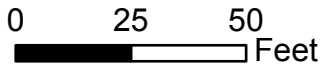


0 500 1,000 Feet

0 0.125 0.25 0.5 Miles

# ICP Map

Cerro Pelado  
NM-SNF-000049

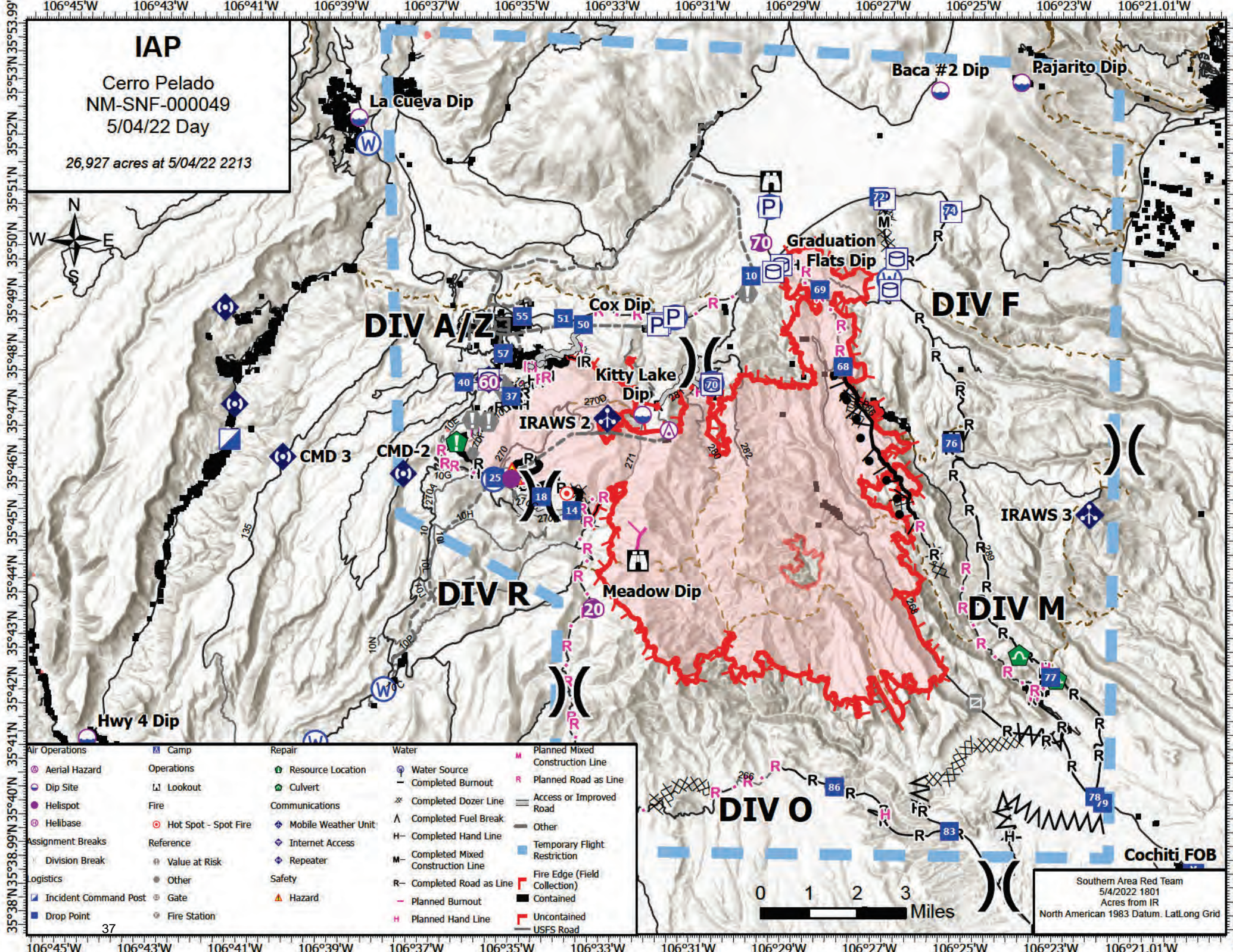


Author Name  
5/4/2022 1311

# IAP

Cerro Pelado  
NM-SNF-000049  
5/04/22 Day

26,927 acres at 5/04/22 2213



<b>Air Operations</b>	Camp	<b>Repair</b>	Resource Location	<b>Water</b>	Planned Mixed Construction Line
Aerial Hazard	Operations	Culvert	Water Source	Completed Burnout	Planned Road as Line
Dip Site	Lookout	<b>Communications</b>	Completed Dozer Line	Access or Improved Road	Other
Helispot	<b>Fire</b>	Mobile Weather Unit	Completed Fuel Break	Temporary Flight Restriction	Fire Edge (Field Collection)
Helibase	Hot Spot - Spot Fire	Internet Access	Completed Hand Line	Completed Mixed Construction Line	Contained
<b>Assignment Breaks</b>	Reference	Repeater	Completed Road as Line	Planned Hand Line	Uncontained
Division Break	Value at Risk	<b>Safety</b>	Planned Burnout	USFS Road	
<b>Logistics</b>	Other	Hazard	Planned Hand Line		
Incident Command Post	Gate	Fire Station			
Drop Point	Fire Station				

**DIV O**

**Cochiti FOB**

0 1 2 3 Miles

Southern Area Red Team  
5/4/2022 1801  
Acres from IR  
North American 1983 Datum. LatLong Grid



# MEDICAL PLAN (ICS 206 WF)

Controlled Unclassified Information//Basic

1. Incident/Project Name				2. Operational Period						
Cerro Pelado Fire				05/4-5/2022 0700-1900						
2. Medical Aid Stations										
Medical Aid Stations		Location			Advanced Life Support (ALS)					
					Yes	No				
ERL Medical Trailer		Base Camp								
3. Ambulance Services										
For local 911 resources, call Sandoval County Dispatch (505) 896-7300										
Name		Location		Phone		Advanced Life Support (ALS)				
						Yes	No			
MED 30 (4WD)		Division A		Cerro Communications		X				
Ambulance 1 (24-hr)		Division Z, DP-25		Cerro Communications		X				
Ambulance 2		Division M		Cerro Communications		X				
Ambulance 3		Division A		Cerro Communications		X				
Ambulance 4		Division M		Cerro Communications		X				
Jemez Pueblo Ambulance Service		4535 NM 4, Jemez Pueblo, NM		Sandoval Cty (above)		X				
MED 31		550 Zia Pueblo Road, NM		Sandoval Cty (above)		X				
4. Air Ambulance Services										
Sandoval County Dispatch (505) 896-7300 Air Ambulance A/G Frequency VMed28 155.34 Tx Tone 156.7										
Name		Location			Advanced Life Support (ALS)					
					Yes	No				
Classic Air Medical		Los Alamos – Night Vision			X					
Tri-State Care Flight		Santa Fe – Night Vision			X					
UNM Lifeguard		Albuquerque – Night Vision			X					
Bernalillo County Sheriff 505-798-7000		A-Star: Day short haul, 24-hour extrication/relocation			X					
Air National Guard		Night Hoist			X					
5. Hospitals										
Name/Address		GPS Datum – WGS 84 Coordinate Standard		Travel Time Air            Gnd		Phone		Helipad Yes    No		Level of Care Facility
Los Alamos Medical Center 3917 West Road Los Alamos, NM		Lat:	35 52.91' N	30 min	40 min	(505) 231-2602 Supv (505) 662-4201	X			Level 3 Trauma
		Long:	106 19.13' W							
		VHF:								
University of New Mexico 2211 Lomas Blvd. NE Albuquerque, NM		Lat:	35 05.27' N	30 min	2 hrs	(505) 272-2111	X			Level 1 Trauma Burn Stabilization
		Long:	106 37.11' W							
		VHF:								
Christus St. Vincent Medical Center 455 St. Michael's Drive Santa Fe NM		Lat:	35 39.56' N	30 min	2 hrs	(505) 913-3361	X			Level 3 Trauma
		Long:	105 56.73' W							
		VHF:								
University of Colorado 12605 E. 16th Avenue, 3rd floor, Aurora, CO		Lat:	39 44.56' N	3.5 hrs	7 hrs	(844) 285-4555	X			Burn Center
		Long:	104 50.52' W							
		VHF:								
6. Clinics										
Trinity Urgent Care 1460 Trinity Dr Los Alamos, NM		Open 0900-1845 Every Day (505) 412-6033								

### IWI IC Responsibilities:

- Take charge of the scene – inform the Division Supervisor and Communications that you are the IWI IC and establish radio=communications(frequencies, channels). Identify the emergency name – Division A medical, etc.
- Assign or begin patient assessment (Medical Incident Report - MIR) and first aid. Request additional medical resources on division/branch or across incident. Transmit MIR patient information to Communications.
- Determine patient transportation through consultation with line medical personnel and Medical Unit Leader. Consider transportation time, risk to personnel, destination facility and available operational resources. If air transport is chosen, implement the plan for alternative transportation in the event aircraft cannot complete the mission. Order transportation resources through Communications as=early as possible.
- Notify Communications as resources arrive and any patient status changes. Names of injured or deceased individuals will not be=transmitted on the radio.
- Initiate documentation for future investigation; if a line safety officer is available, assign them to lead documentation. Do not move=deceased individuals, gear or personal effects except to accomplish rescue work or protect the safety of others. Obtain written documentation=of witnesses. The Unit Log, ICS 214, may be used for the initial documentation, but a subsequent narrative will be required.
- As appropriate, conduct an After-Action Review to determine successes, areas to improve and lessons learned.



# MEDICAL PLAN (ICS 206 WF)

Controlled Unclassified Information//Basic

7. Division   Branch   Group	Area Location Capability		
<b>Div A/Z</b>	EMS Responders & Capability:	<b>Med 30 Ambulance (ALS) Dispatch 877-261-4090</b> <b>Ambulance 1 (ERL) DP-25 Tyler Grady 720-660-7786</b> <b>Medic Team 2 (ALS) - Dean Carpenter 708-979-6976</b>	
	ETA for Ambulance to Scene:	<b>Air: 40 min. Ground: 30 min.</b>	
<b>Div F</b>	EMS Responders & Capability:	<b>REMS 2 (ALS) Cochiti Fire Station - Rick Bostian 479-422-0462</b> <b>Ambulance 3 Mike Sheppard 724-366-8300</b> <b>Medic Team 1 (ALS) - Cody Keller 404-966-3146</b>	
	ETA for Ambulance to Scene:	<b>Air: 40 min. Ground: 30 min.</b>	
<b>Div M</b>	EMS Responders & Capability:	<b>Ambulance 2 (ALS) Arnaldo Rivera 520-431-1611</b> <b>Ambulance 4 (ALS) Coral McLain 720-527-2768</b>	
	ETA for Ambulance to Scene:	<b>Air: 40 min. Ground: 30 mins.</b>	
<b>Div O</b>	EMS Responders & Capability:		
	ETA for Ambulance to Scene:	<b>Air: 40 min. Ground: 1 hr.</b>	
<b>Div R</b>	EMS Responders & Capability:	<b>REMS-1 (ALS) DP-14 Tanner Smith 541-556-9045</b> <b>Med Team 3 (ALS) - Jeff Molen 318-751-1087</b>	
	ETA for Ambulance to Scene:	<b>Air: 40 min. Ground: 30 min.</b>	
<b>Structure</b>	EMS Responders & Capability:	<i>None assigned.</i>	
	ETA for Ambulance to Scene:	<b>Air: 40 min. Ground: 30 min.</b>	
<b>Night Ops</b>	EMS Responders & Capability:	<b>Ambulance 1 (ALS) DP-25 Sage Stewart 479-806-0860</b> <b>Ambulance 3 (ALS) Jackson Pixley 720-527-2788</b> <b>Ambulance 4 (ALS) Dan Chandler 720-527-2768 (S FOB)</b> <b>Med Team 4 Randale Smith 434-426-8288</b>	
	ETA for Ambulance to Scene:	<b>Air: 40 min. Ground: 30 min.</b>	
<b>ICP</b>	EMS Responders & Capability:	<b>Levi Clymer (EMPF) 417-658-5155</b> <b>Nick Arnett (EMTF) 408-888-1900</b> <b>Karin Hefington (EMTF) 530-307-1706</b>	
	Equipment Available on Scene:	<b>BLS</b>	
	Medical Emergency #:	<b>(479) 238-6064 or (408) 888-1900</b>	
	ETA for Ambulance to Scene:	<b>Air: 20 min. Ground: 30 min.</b>	
<b>Base Camp</b>	EMS Responders & Capability:	<b>Medical Trailer</b>	
	Equipment Available on Scene:	<b>ALS</b>	
	ETA for Ambulance to Scene:	<b>Air: 35 min. Ground: 45 min.</b>	
<b>South FOB</b>	EMS Responders & Capability:	<b>Wayne Hare MEDL, EMTF 435-260-0051</b>	
8. Prepared By (Medical Unit Leader)		9. Date/Time	10. Reviewed by (Safety Officer)
Levi Clymer, MEDL Nick Arnett, MEDL(t)		5/3/2022 1700	Tony Rivers, SOFR  5/3/2022 1700

# MEDICAL PLAN (ICS 206 WF)

Controlled Unclassified Information//Basic

## Medical Incident Report

**FOR A NON-EMERGENCY INCIDENT, WORK THROUGH CHAIN OF COMMAND TO REPORT AND TRANSPORT INJURED PERSONNEL AS NECESSARY.**

**FOR A MEDICAL EMERGENCY: IDENTIFY ON SCENE INCIDENT COMMANDER BY NAME AND POSITION AND ANNOUNCE "MEDICAL EMERGENCY" TO INITIATE RESPONSE FROM IMT COMMUNICATIONS/DISPATCH.**

**Use the following items to communicate situation to communications/dispatch.**

**1. CONTACT COMMUNICATIONS / DISPATCH** (Verify correct frequency prior to starting report)

*Ex: "Communications, Div. Alpha. Stand-by for Emergency Traffic."*

**2. INCIDENT STATUS:** Provide incident summary (including number of patients) and command structure.

*Ex: "Communications, I have a Red priority patient, unconscious, struck by a falling tree. Requesting air ambulance to Forest Road 1 at (Lat./Long.) This will be the Trout Meadow Medical, IC is TFLD Jones. EMT Smith is providing medical care."*

Severity of Emergency / Transport Priority	<input type="checkbox"/> <b>RED / PRIORITY 1 Life or limb threatening injury or illness. Evacuation need is IMMEDIATE</b> <i>Ex: Unconscious, difficulty breathing, bleeding severely, 2<sup>o</sup> – 3<sup>o</sup> burns more than 4 palm sizes, heat stroke, disoriented.</i> <input type="checkbox"/> <b>YELLOW / PRIORITY 2 Serious Injury or illness. Evacuation may be DELAYED if necessary.</b> <i>Ex: Significant trauma, unable to walk, 2<sup>o</sup> – 3<sup>o</sup> burns not more than 1-3 palm sizes.</i> <input type="checkbox"/> <b>GREEN / PRIORITY 3 Minor Injury or illness. Non-Emergency transport</b> <i>Ex: Sprains, strains, minor heat-related illness.</i>	
Nature of Injury or Illness & Mechanism of Injury		<i>Brief Summary of Injury or Illness (Ex: Unconscious, Struck by Falling Tree)</i>
Transport Request		<i>Air Ambulance / Short Haul/Hoist Ground Ambulance / Other</i>
Patient Location		<i>Descriptive Location &amp; Lat. / Long. (WGS84)</i>
Incident Name		<i>Geographic Name + "Medical" (Ex: Trout Meadow Medical)</i>
On-Scene Incident Commander		<i>Name of on-scene IC of Incident within an Incident (Ex: TFLD Jones)</i>
Patient Care		<i>Name of Care Provider (Ex: EMT Smith)</i>

**3. INITIAL PATIENT ASSESSMENT:** Complete this section for each patient as applicable (start with the most severe patient)

Patient Assessment: See IRPG page 106

Treatment:

**4. TRANSPORT PLAN:**

Evacuation Location (if different): (Descriptive Location (drop point, intersection, etc.) or Lat. / Long.) Patient's ETA to Evacuation Location:

Helispot / Extraction Site Size and Hazards:

**5. ADDITIONAL RESOURCES / EQUIPMENT NEEDS:**

*Example: Paramedic/EMT, Crews, Immobilization Devices, AED, Oxygen, Trauma Bag, IV/Fluid(s), Splints, Rope rescue, Wheeled litter, HAZMAT, Extrication*

**6. COMMUNICATIONS: Identify State Air/Ground EMS Frequencies and Hospital Contacts as applicable**

Function	Channel Name/Number	Receive (RX)	Tone/NAC *	Transmit (TX)	Tone/NAC *
COMMAND					
AIR-TO-GRND					
TACTICAL					

**7. CONTINGENCY: Considerations:** If primary options fail, what actions can be implemented in conjunction with primary evacuation method? Be thinking ahead.

**8. ADDITIONAL INFORMATION:** Updates/Changes, etc.

**REMEMBER:** Confirm ETA's of resources ordered. Act according to your level of training. Be Alert. Keep Calm. Think Clearly. Act Decisively.