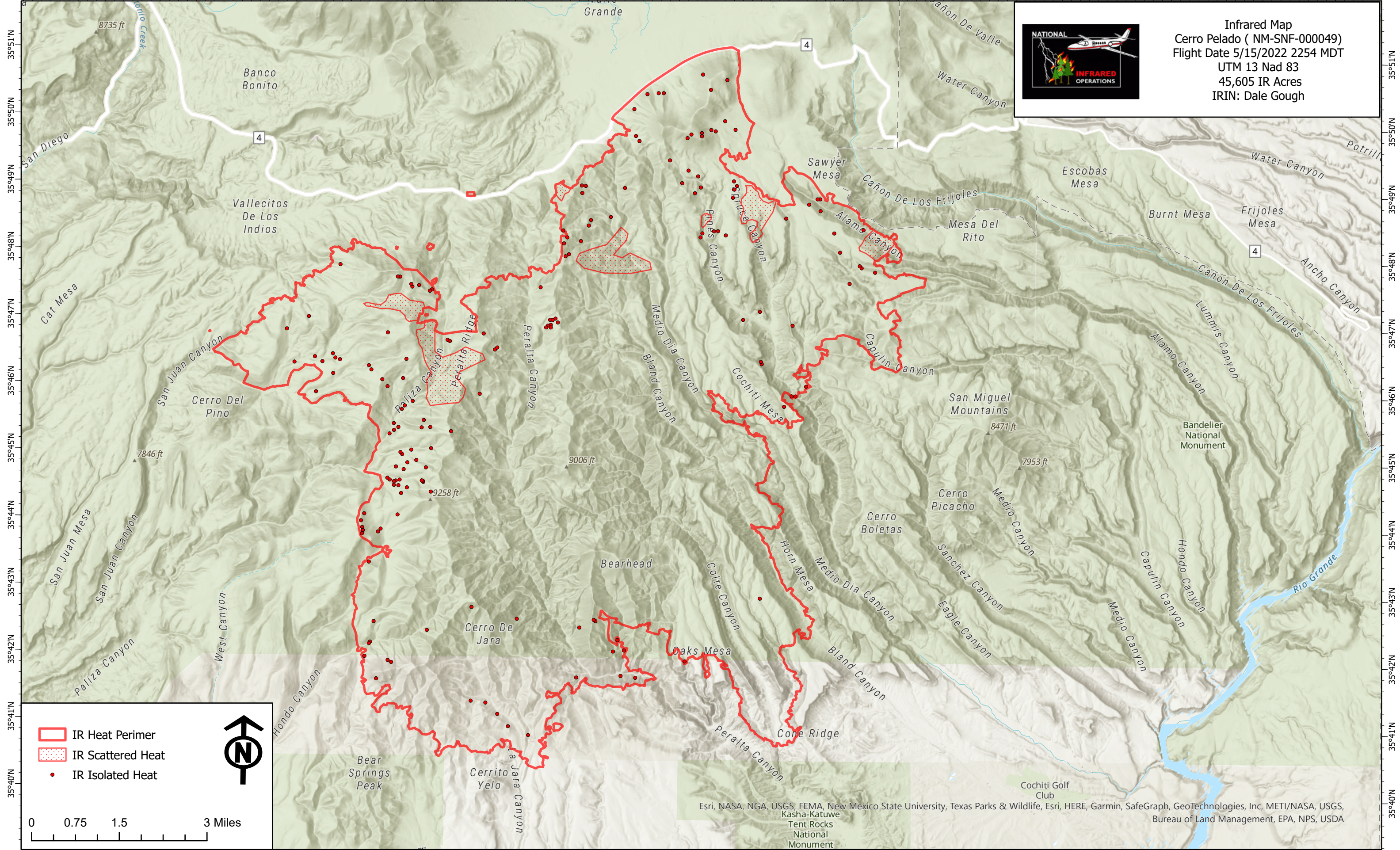




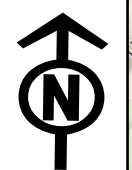


106°40'W 106°39'W 106°38'W 106°37'W 106°36'W 106°35'W 106°34'W 106°33'W 106°32'W 106°31'W 106°30'W 106°29'W 106°28'W 106°27'W 106°26'W 106°25'W 106°24'W 106°23'W 106°22'W 106°21'W 106°20'W 106°19'W 106°18'W 106°17'W 106°16'W

Infrared Map
 Cerro Pelado (NM-SNF-00049)
 Flight Date 5/15/2022 2254 MDT
 UTM 13 Nad 83
 45,605 IR Acres
 IRIN: Dale Gough

-  IR Heat Perimer
-  IR Scattered Heat
-  IR Isolated Heat



0 0.75 1.5 3 Miles

Esri, NASA, NGA, USGS, FEMA, New Mexico State University, Texas Parks & Wildlife, Esri, HERE, Garmin, SafeGraph, GeoTechnologies, Inc, METI/NASA, USGS, Kasha-Katuwe Tent Rocks National Monument, Cochiti Golf Club, Bureau of Land Management, EPA, NPS, USDA

106°39'W 106°38'W 106°37'W 106°36'W 106°35'W 106°34'W 106°33'W 106°32'W 106°31'W 106°30'W 106°29'W 106°28'W 106°27'W 106°26'W 106°25'W 106°24'W 106°23'W 106°22'W 106°21'W 106°20'W 106°19'W 106°18'W 106°17'W 106°16'W 106°15'W

35°51'N
35°50'N
35°49'N
35°48'N
35°47'N
35°46'N
35°45'N
35°44'N
35°43'N
35°42'N
35°41'N
35°40'N

35°51'N
35°50'N
35°49'N
35°48'N
35°47'N
35°46'N
35°45'N
35°44'N
35°43'N
35°42'N
35°41'N
35°40'N