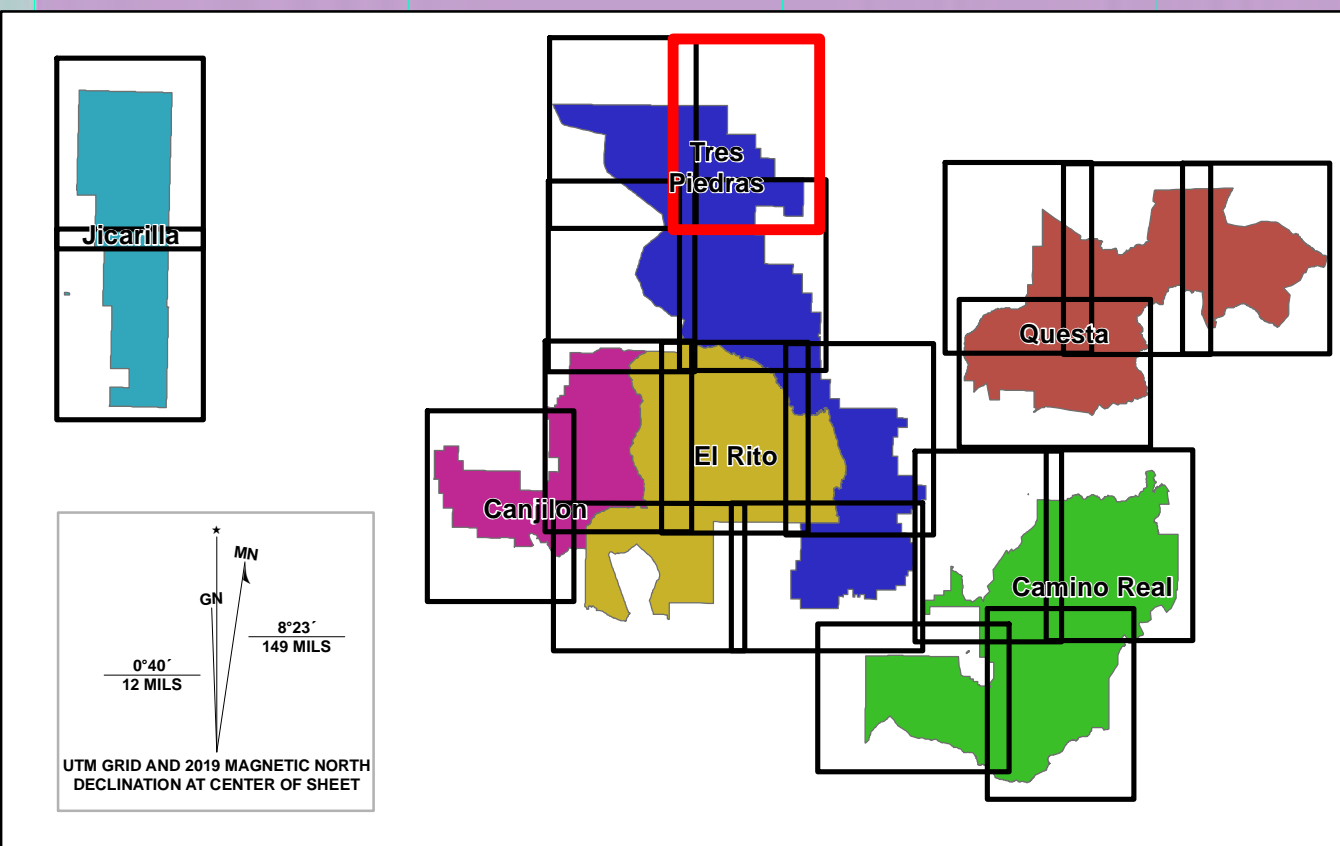
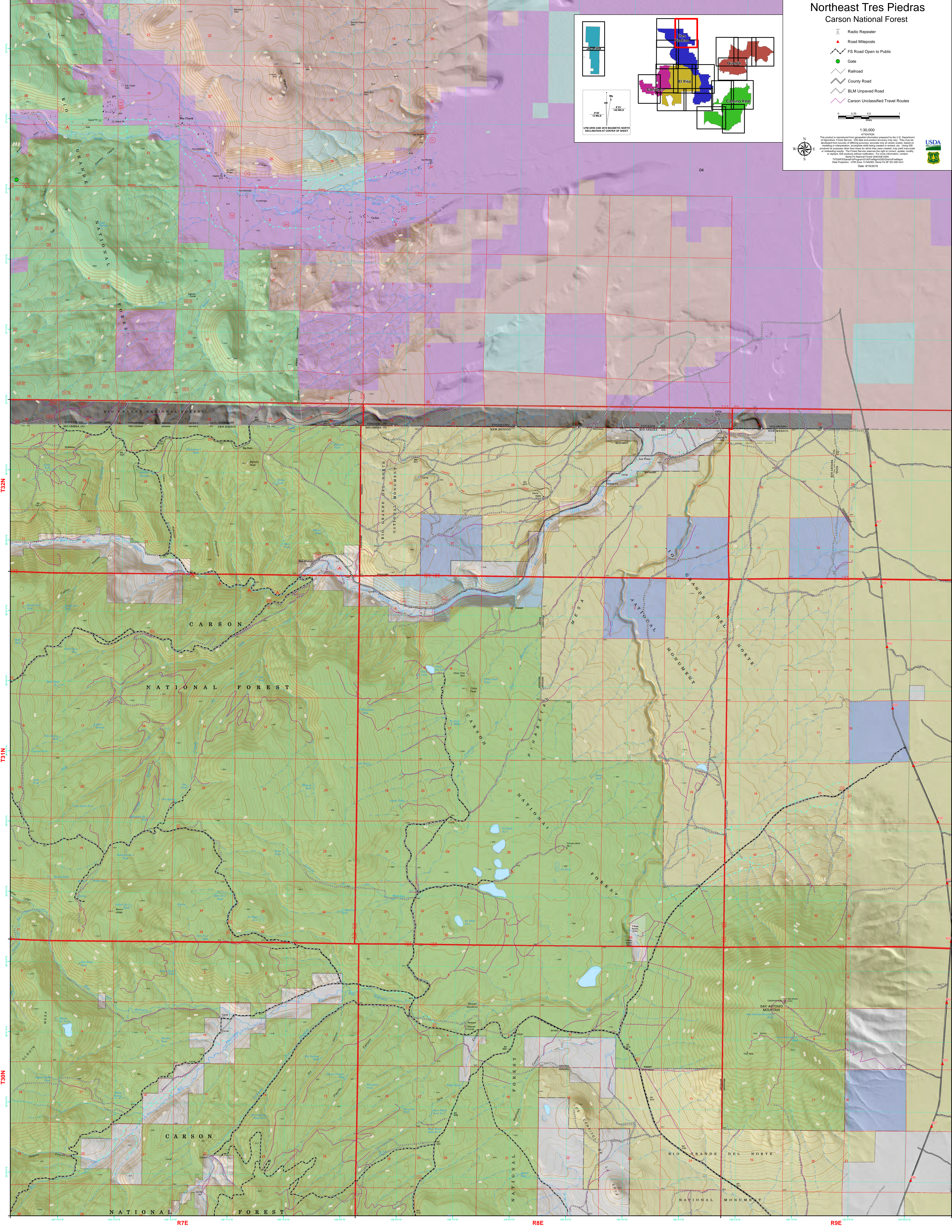


Northeast Tres Piedras Carson National Forest



- Radio Repeater
- Road Mileposts
- FS Road Open to Public
- Gate
- Railroad
- County Road
- BLM Unpaved Road
- Carson Unclassified Travel Routes

1:30,000
This product is reproduced from geospatial information prepared by the U.S. Department of Agriculture, Forest Service. GIS data and product accuracy may vary. They may be developed from sources of differing accuracy, accuracy only or control points. Accuracy is not guaranteed. The Forest Service reserves the right to correct, update, modify, or replace GIS products without notification. For more information, please contact: National Forest Inventory, Forest Management Division, 2025 G Street, SW, Washington, DC 20250-0001. Date: 01/15/2019



T32N

T32N

T31N

T31N

T30N

T30N

R7E

R8E

R9E