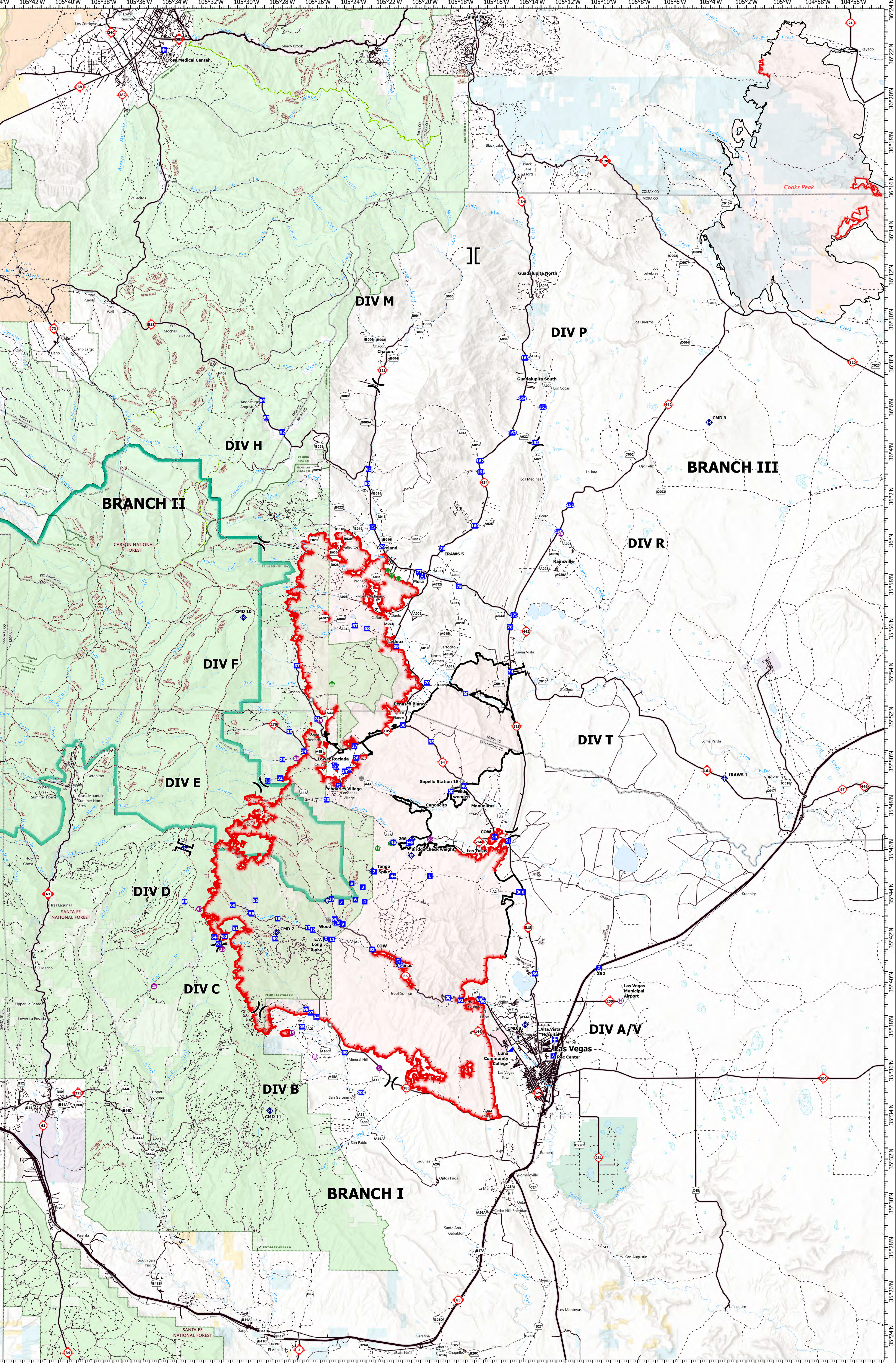


IC Point Type	Label	Latitude WGS84 DDM	Longitude WGS84 DDM
Camp	352	35° 40.632' N	105° 10.158' W
Camp	E.V. Long Spike	35° 41.907' N	105° 25.216' W
Camp	Phase Forward Operating Base	35° 42.203' N	105° 25.558' W
Camp	Roc Center	35° 46.652' N	105° 12.682' W
Closure		35° 44.071' N	105° 14.605' W
Closure		35° 43.777' N	105° 14.605' W
Closure		35° 46.652' N	105° 18.421' W
Closure		35° 49.282' N	105° 18.529' W
Closure		35° 53.933' N	105° 15.614' W
Closure		35° 46.205' N	105° 20.747' W
Drop Point	0	35° 44.044' N	105° 14.377' W
Drop Point	1	35° 44.702' N	105° 14.507' W
Drop Point	10	35° 43.727' N	105° 25.037' W
Drop Point	11	35° 41.901' N	105° 24.979' W
Drop Point	12	35° 43.203' N	105° 24.979' W
Drop Point	13	35° 42.432' N	105° 26.347' W
Drop Point	150	35° 00.600' N	105° 12.454' W
Drop Point	151	35° 01.500' N	105° 12.454' W
Drop Point	152	35° 04.417' N	105° 13.793' W
Drop Point	153	35° 06.022' N	105° 13.357' W
Drop Point	154	35° 02.822' N	105° 13.809' W
Drop Point	155	35° 04.644' N	105° 13.711' W
Drop Point	156	35° 04.857' N	105° 15.034' W
Drop Point	157	35° 06.417' N	105° 14.484' W
Drop Point	158	35° 06.253' N	105° 14.900' W
Drop Point	175	35° 56.603' N	105° 14.940' W
Drop Point	2	35° 44.971' N	105° 22.666' W
Drop Point	20	35° 41.901' N	105° 23.137' W
Drop Point	21	35° 51.889' N	105° 21.850' W
Drop Point	23	35° 49.512' N	105° 24.234' W
Drop Point	24	35° 49.512' N	105° 24.234' W
Drop Point	25	35° 49.579' N	105° 24.070' W
Drop Point	26	35° 48.121' N	105° 23.702' W
Drop Point	27	35° 50.653' N	105° 23.773' W
Drop Point	29	35° 50.030' N	105° 27.789' W
Drop Point	30	35° 44.205' N	105° 23.289' W
Drop Point	31	35° 49.056' N	105° 28.606' W
Drop Point	32	35° 49.188' N	105° 27.023' W
Drop Point	33	35° 51.286' N	105° 27.659' W
Drop Point	34	35° 50.407' N	105° 26.600' W
Drop Point	35	35° 50.800' N	105° 25.511' W
Drop Point	37	35° 44.900' N	105° 24.966' W
Drop Point	4	35° 43.707' N	105° 22.996' W
Drop Point	40	35° 48.800' N	105° 17.873' W
Drop Point	44	35° 46.205' N	105° 21.599' W
Drop Point	45	35° 46.205' N	105° 21.599' W
Drop Point	49	35° 46.314' N	105° 20.622' W
Drop Point	5	35° 44.439' N	105° 21.807' W
Drop Point	50	35° 46.559' N	105° 15.979' W
Drop Point	51	35° 46.261' N	105° 15.207' W
Drop Point	56	35° 43.430' N	105° 23.447' W
Drop Point	58	35° 43.047' N	105° 28.458' W
Drop Point	59	35° 41.920' N	105° 28.139' W
Drop Point	6	35° 43.430' N	105° 24.899' W
Drop Point	60	35° 43.430' N	105° 30.511' W
Drop Point	61	35° 42.386' N	105° 30.359' W
Drop Point	62	35° 43.030' N	105° 29.947' W
Drop Point	63	35° 41.673' N	105° 31.268' W
Drop Point	64	35° 41.980' N	105° 31.542' W
Drop Point	65	35° 43.579' N	105° 31.186' W
Drop Point	66	35° 43.579' N	105° 29.999' W
Drop Point	67	35° 43.579' N	105° 29.999' W
Drop Point	68	35° 43.579' N	105° 29.999' W
Drop Point	69	35° 43.579' N	105° 29.999' W
Drop Point	7	35° 43.587' N	105° 24.470' W
Drop Point	70	35° 43.532' N	105° 19.752' W
Drop Point	74	35° 43.407' N	105° 15.109' W
Drop Point	75	35° 37.897' N	105° 17.986' W
Drop Point	76	35° 36.064' N	105° 15.154' W
Drop Point	77	35° 36.064' N	105° 15.154' W
Drop Point	78	35° 36.064' N	105° 15.154' W
Drop Point	79	35° 36.064' N	105° 15.154' W
Drop Point	80	35° 36.064' N	105° 15.154' W
Drop Point	81	35° 36.064' N	105° 15.154' W
Drop Point	82	35° 36.064' N	105° 15.154' W
Drop Point	83	35° 36.064' N	105° 15.154' W
Drop Point	84	35° 36.064' N	105° 15.154' W
Drop Point	85	35° 36.064' N	105° 15.154' W
Drop Point	86	35° 36.064' N	105° 15.154' W
Drop Point	87	35° 36.064' N	105° 15.154' W
Drop Point	88	35° 36.064' N	105° 15.154' W
Drop Point	89	35° 36.064' N	105° 15.154' W
Drop Point	9	35° 44.744' N	105° 21.162' W
Drop Point	92	35° 38.164' N	105° 17.821' W
Drop Point	93	35° 38.164' N	105° 17.821' W
Drop Point	94	35° 38.164' N	105° 17.821' W
Drop Point	95	35° 37.947' N	105° 26.829' W
Drop Point	96	35° 37.947' N	105° 26.829' W
Drop Point	97	35° 38.570' N	105° 26.145' W
Drop Point	98	35° 37.730' N	105° 26.424' W
Drop Point	99	35° 36.767' N	105° 24.228' W
Five Station	Sapello Station 18	35° 49.071' N	105° 17.785' W
Helibase	Las Vegas Municipal Airport	35° 39.160' N	105° 08.955' W
Helibase		35° 37.662' N	105° 17.200' W
Helibase	25	35° 39.732' N	105° 34.851' W
Helibase	35	35° 41.430' N	105° 13.069' W
Helibase	45	35° 43.203' N	105° 13.364' W
Helibase	5	35° 36.080' N	105° 22.327' W
Helibase	55	35° 46.450' N	105° 19.352' W
Helibase	65	35° 50.080' N	105° 20.020' W
Helibase	75	35° 51.797' N	105° 25.715' W
Helibase	85	35° 00.307' N	105° 12.333' W
Incident Command Post	Las Vegas Community College	35° 36.917' N	105° 15.056' W
Repeater	CHD 10	35° 56.452' N	105° 28.999' W

IC Point Type	Label	Latitude WGS84 DDM	Longitude WGS84 DDM
Helispot			
Helibase			
Unimproved Landing Area			
Closure			
Division Break			
Branch Break			
Camp			
Staging Area			
Landmark			
Incident Command Post			
Drop Point			
Bridge			
Stream Crossing			
Mobile Weather Unit			
Internet Access			
Landmark			
Repeater			
Fire Station			
Contained			
Uncontained			
Wildfire Daily Fire Perimeter			
Administrative FS Boundary			
Ranger District Boundary			
Federal Wilderness Boundary			
Forest Service Land			
Bureau of Indian Affairs (BIA)			
Bureau of Land Management (BLM)			
Department of Defense (DOD)			
National Park Service (NPS)			
State			
US Fish and Wildlife Service (USFWS)			
US Forest Service (USFS)			
Private			
Primary Highway			
Secondary Highway			
Paved Roads			
Dirt (Not Paved)			
Trail			
National Designated Trail			
Railroad			

TRANSPORTATION 5/7/2022
Day
Hermits Peak NM-SNF-000027 168,931 acres at
Calf Canyon NM-SNF-000028 05/06/2022 1235 hr



SWANMT GIS - 5/6/2022 2216 - Acres from R and GPS - North American 1983 Datum, Lat/Long Grid

SOUTHWEST AREA INCIDENT MANAGEMENT TEAM