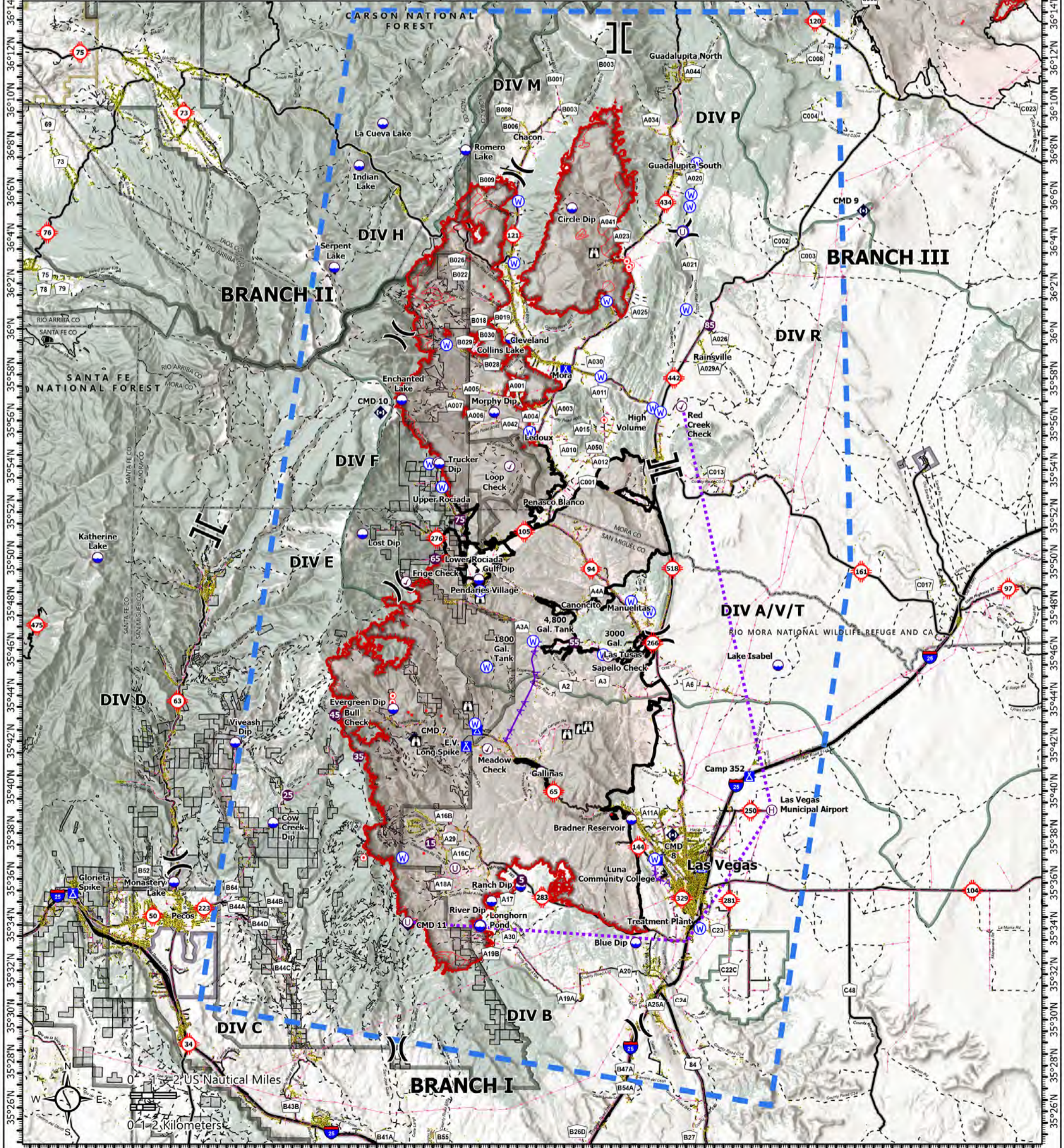


FC Point Type	Label	Lat WGS84 DDM	Long WGS84 DDM	FC Point Type	Label	Elevation (Feet)	Lat WGS84 DDM	Long WGS84 DDM
Airstrip or Airport	Angel Fire Airport	36° 25.189' N	105° 17.601' W	Dip Site		7100	35° 40.797' N	105° 21.294' W
Helibase	Las Vegas Municipal Airport	35° 39.160' N	105° 08.955' W	Dip Site	Blue Dip	6600	35° 33.359' N	105° 16.211' W
Helispot	15	35° 37.662' N	105° 27.200' W	Dip Site	Bradner Reservoir	6740	35° 38.741' N	105° 16.461' W
Helispot	25	35° 39.732' N	105° 34.851' W	Dip Site	Circle Dip	9100	36° 05.498' N	105° 19.800' W
Helispot	35	35° 41.435' N	105° 31.069' W	Dip Site	Collins Lake	7500	35° 59.699' N	105° 23.040' W
Helispot	45	35° 43.250' N	105° 32.364' W	Dip Site	Cow Creek Dip	8390	35° 38.534' N	105° 35.630' W
Helispot	5	35° 36.086' N	105° 22.327' W	Dip Site	Enchanted Lake	10738	35° 57.014' N	105° 28.858' W
Helispot	55	35° 46.453' N	105° 19.552' W	Dip Site	Evergreen Dip	8471	35° 43.531' N	105° 29.235' W
Helispot	65	35° 50.083' N	105° 27.020' W	Dip Site	Gulf Dip	7530	35° 49.197' N	105° 24.682' W
Helispot	75	35° 51.797' N	105° 25.715' W	Dip Site	Indian Lake	9514	36° 07.251' N	105° 31.210' W
Helispot	85	36° 00.307' N	105° 12.333' W	Dip Site	Katherine Lake	11742	35° 50.047' N	105° 45.125' W
Incident Command Post	Luna Community College	35° 36.973' N	105° 15.058' W	Dip Site	La Cueva Lake	10161	36° 09.089' N	105° 29.952' W
Lookout		35° 43.658' N	105° 25.246' W	Dip Site	Lake Isabel	6760	35° 45.483' N	105° 08.627' W
Lookout		35° 42.444' N	105° 19.923' W	Dip Site	Longhorn Pond	6870	35° 34.079' N	105° 24.533' W
Lookout		35° 42.107' N	105° 28.016' W	Dip Site	Lost Dip	9900	35° 51.160' N	105° 30.932' W
Lookout		35° 42.675' N	105° 19.200' W	Dip Site	Monastery Lake	6980	35° 35.922' N	105° 40.914' W
Lookout		35° 42.788' N	105° 18.801' W	Dip Site	Morphy Dip	7870	35° 56.487' N	105° 23.894' W
Lookout		35° 48.360' N	105° 24.606' W	Dip Site	Ranch Dip	7000	35° 35.828' N	105° 22.375' W
Lookout		36° 03.472' N	105° 18.557' W	Dip Site	River Dip	6800	35° 35.160' N	105° 23.924' W
Unimproved Landing Area		35° 36.584' N	105° 25.883' W	Dip Site	Romero Lake	9780	36° 07.949' N	105° 25.485' W
Unimproved Landing Area		36° 04.403' N	105° 13.801' W	Dip Site	Serpent Lake	11770	36° 02.791' N	105° 32.525' W
Unimproved Landing Area		35° 34.225' N	105° 28.404' W	Dip Site	Trucker Dip	8230	35° 54.243' N	105° 26.819' W
Unimproved Landing Area		35° 54.301' N	105° 26.901' W	Dip Site	Viveash Dip	8730	35° 42.022' N	105° 37.690' W



PILOT 5/11/2022 Day
 Hermits Peak NM-SNF-000027 236,939 acres at
 Calf Canyon NM-SNF-000028 05/10/2022 2300 hr

1:320,000 - SWAIMT2&3 - 5/11/2022 0445 - Acres from IR and GPS - North American 1983 Datum. Lat/Long Grid

⊗ Airstrip or Airport	⊙ Unimproved Landing Area	⊠ Lookout	⬮ Possible IR Heat Source
⊙ Aviation Check Point	⊗ Branch Break	⊙ Hot Spot - Spot Fire	⬮ IR Heat Perimeter
⊙ Dip Site	⊗ Incident Command Post	⊙ Repeater	⬮ IR Intense Heat
⊙ Helispot	⊗ Camp	⊙ Water Source	⬮ Aerial Hazard
⊙ Helibase		⊙ IR Isolated Heat Source	⬮ Aviation Route

SOUTHWEST AREA INCIDENT MANAGEMENT TEAM