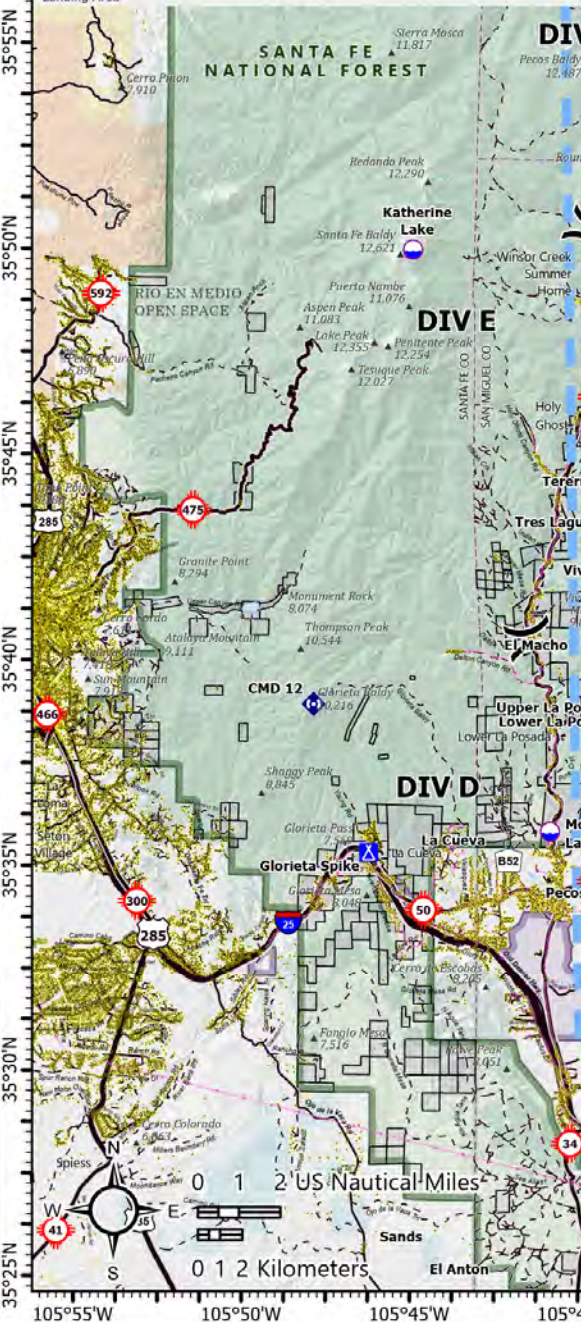


Point Type	Label	Elevation (ft)	Lat WGS84	Long WGS84
Dip Site		7100	35° 40.797' N	105° 21.294' W
Dip Site		6850	35° 33.928' N	105° 23.580' W
Dip Site	Blue Dip	6600	35° 33.359' N	105° 16.211' W
Dip Site	Bradner Reservoir	6740	35° 38.742' N	105° 16.462' W
Dip Site	Canada Dip	7300	36° 03.086' N	105° 14.867' W
Dip Site	Circle Dip	9100	36° 05.429' N	105° 19.752' W
Dip Site	Collins Lake	7500	35° 59.699' N	105° 23.041' W
Dip Site	Cow Creek Dip	8390	35° 38.534' N	105° 35.630' W
Dip Site	Enchanted Lake	10738	35° 57.014' N	105° 28.858' W
Dip Site	Evergreen Dip	8471	35° 43.531' N	105° 29.236' W
Dip Site	Fire Station Dip	7700	36° 11.385' N	105° 13.967' W
Dip Site	Gulf Dip	7530	35° 49.197' N	105° 24.683' W
Dip Site	Indian Lake	9514	36° 07.251' N	105° 31.211' W
Dip Site	Katherine Lake	11742	35° 50.047' N	105° 45.125' W
Dip Site	Kemp Dip	7700	36° 05.299' N	105° 12.532' W
Dip Site	La Cueva Lake	10161	36° 09.089' N	105° 29.952' W
Dip Site	Lake Isabel	6760	35° 45.483' N	105° 08.628' W
Dip Site	Longhorn Pond	6870	35° 34.080' N	105° 24.534' W
Dip Site	Lost Dip	9900	35° 51.160' N	105° 30.932' W
Dip Site	Monastery Lake	6980	35° 35.922' N	105° 40.914' W
Dip Site	Morphy Dip	7870	35° 56.487' N	105° 23.895' W
Dip Site	Ranch Dip	7000	35° 35.829' N	105° 22.376' W
Dip Site	River Dip	6800	35° 35.160' N	105° 23.924' W
Dip Site	Romero Lake	9780	36° 07.949' N	105° 25.485' W
Dip Site	Serpent Lake	11770	36° 02.792' N	105° 32.526' W
Dip Site	Triple Dip		35° 41.023' N	105° 32.428' W
Dip Site	Trucker Dip	8230	35° 54.243' N	105° 26.817' W
Dip Site	Viveash Dip	8730	35° 42.023' N	105° 37.691' W
Helibase	Angel Fire Airport		36° 25.189' N	105° 17.601' W
Helibase	Las Vegas Municipal Airport		35° 39.160' N	105° 08.956' W
Helispot	105	7900	35° 38.089' N	105° 37.051' W
Helispot	11	7920	35° 31.178' N	105° 26.322' W
Helispot	15	7350	35° 37.662' N	105° 27.201' W
Helispot	25	8600	35° 39.733' N	105° 34.852' W
Helispot	30	7575	35° 34.864' N	105° 36.957' W
Helispot	35	10200	35° 41.435' N	105° 31.070' W
Helispot	350		36° 00.580' N	105° 22.851' W
Helispot	385	7100	36° 00.307' N	105° 12.333' W
Helispot	40	10800	35° 43.301' N	105° 33.290' W
Helispot	45	10600	35° 43.250' N	105° 32.365' W
Helispot	5	7000	35° 36.086' N	105° 22.327' W
Helispot	55	7300	35° 46.453' N	105° 19.553' W
Helispot	65	7850	35° 50.083' N	105° 27.021' W
Helispot	75	8000	35° 51.797' N	105° 25.715' W
Helispot	95	9337	35° 34.226' N	105° 28.404' W
Incident Command Post	Central ICP		36° 24.565' N	105° 34.408' W
Incident Command Post	Luna		35° 36.973' N	105° 15.058' W
Incident Command Post	Community College			
Incident Command Post	North ICP		36° 24.565' N	105° 34.408' W
Lookout			35° 43.658' N	105° 25.247' W
Lookout			35° 42.445' N	105° 19.924' W
Lookout			35° 42.107' N	105° 28.017' W
Lookout			35° 42.676' N	105° 19.201' W
Lookout			35° 42.789' N	105° 18.801' W
Lookout			35° 48.360' N	105° 24.606' W
Lookout			36° 03.473' N	105° 18.557' W
Lookout			35° 32.225' N	105° 18.079' W
Restricted Water Source				
Restricted Water Source	Martinez Pond		36° 09.104' N	105° 25.410' W
Unimproved Landing Area		7200	35° 36.585' N	105° 25.883' W
Unimproved Landing Area		9600	35° 48.158' N	105° 27.873' W
Unimproved Landing Area			36° 04.403' N	105° 13.801' W
Unimproved Landing Area		8000	35° 54.301' N	105° 26.901' W
Unimproved Landing Area		7600	36° 02.274' N	105° 23.148' W



PILOT
Hermits Peak NM-SNF-00027 298,060 acres at
Calf Canyon NM-SNF-00028 05/15/2022 2322 hr

5/17/2022 Day

- Contained
- Uncontained
- Aviation Check Point
- Dip Site
- Helispot
- Helibase
- Unimproved Landing Area
- Division Break
- Branch Break
- Zone Break
- Incident Command Post
- Camp
- Lookout
- Hot Spot - Spot Fire
- Repeater
- Water Source
- Restricted Water Source
- Transmission Station
- Powerline
- Aerial Hazard
- Aviation Route
- Temporary Flight Restriction
- South_Zone_alt_la

1:340,000 - SWAINT&3 - 5/16/2022 2311 - Acres from IR and GPS - North American 1983 Datum, Lat/Long Grid