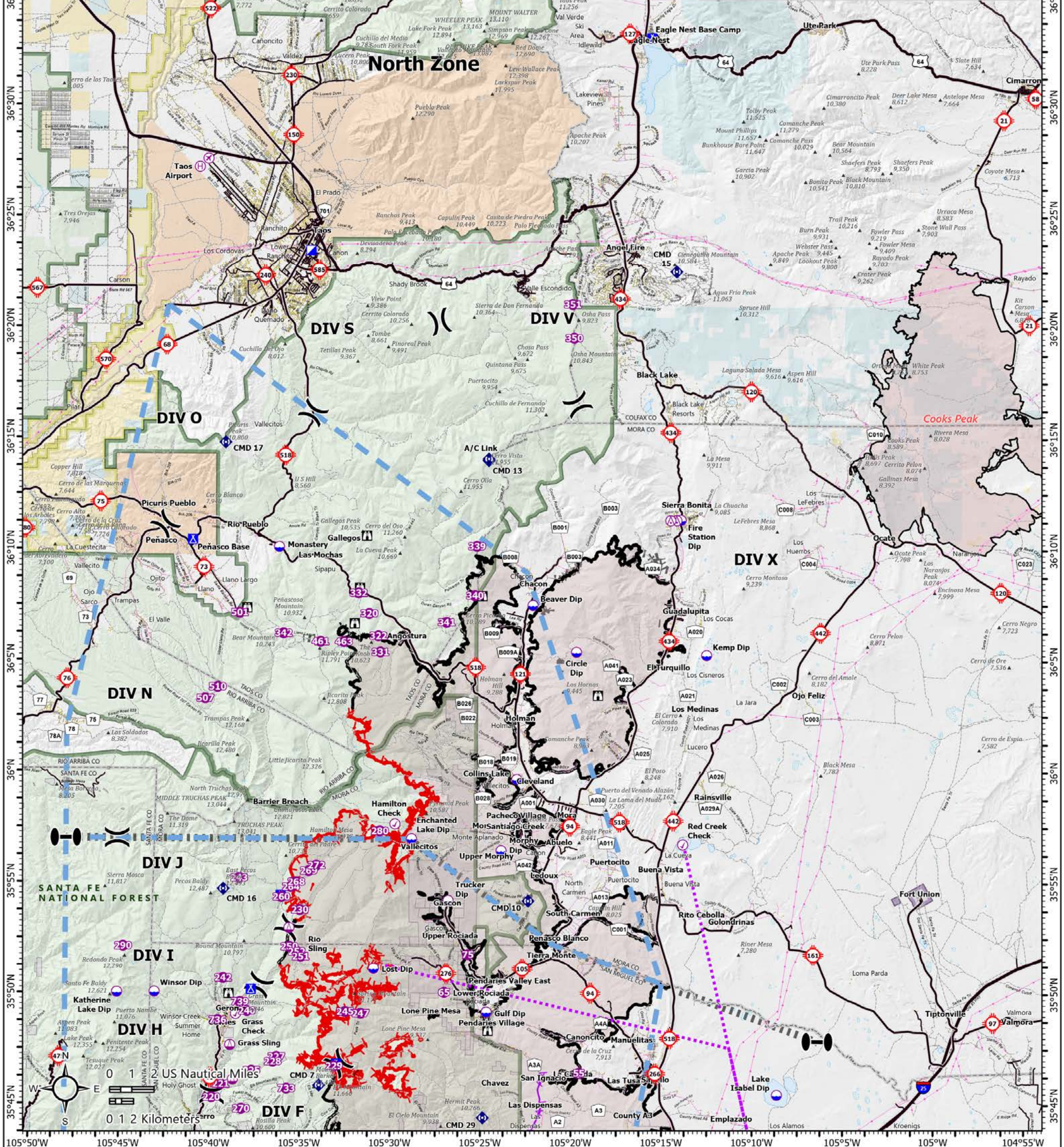


Point Type	Label	Elevation (ft)	Lat WGS84	Long WGS84	Point Type	Label	Elevation (ft)	Lat WGS84	Long WGS84	Point Type	Label	Elevation (ft)	Lat WGS84	Long WGS84
Airstrip or Airport		7096	36° 27.612' N	105° 40.330' W	Helispot	243	11920	35° 55.225' N	105° 38.397' W	Helispot	463	10200	36° 05.870' N	105° 32.663' W
Dip Site	Beaver Dip	7960	36° 07.535' N	105° 22.173' W	Helispot	245	10400	35° 49.197' N	105° 32.494' W	Helispot	501	8560	36° 07.162' N	105° 38.442' W
Dip Site	Circle Dip	9100	36° 05.429' N	105° 19.752' W	Helispot	247	10900	35° 49.122' N	105° 31.633' W	Helispot	507	9500	36° 03.300' N	105° 40.332' W
Dip Site	Collins Lake	7500	35° 59.699' N	105° 23.041' W	Helispot	250	10900	35° 52.137' N	105° 35.597' W	Helispot	510	9500	36° 03.813' N	105° 39.650' W
Dip Site	Enchanted Lake Dip	10738	35° 57.014' N	105° 28.858' W	Helispot	251	7025	35° 51.692' N	105° 34.960' W	Helispot	55	7300	35° 46.453' N	105° 19.553' W
					Helispot	252	9760	35° 51.913' N	105° 35.184' W	Helispot	65	7850	35° 50.083' N	105° 27.021' W
Dip Site	Fire Station Dip	7700	36° 11.385' N	105° 13.967' W	Helispot	260	9600	35° 54.378' N	105° 36.050' W	Helispot	733	11000	35° 45.730' N	105° 35.719' W
Dip Site	Gulf Dip	7530	35° 49.197' N	105° 24.683' W	Helispot	264	10150	35° 54.833' N	105° 35.530' W	Helispot	736	8200	35° 48.795' N	105° 39.538' W
Dip Site	Katherine Lake Dip	11742	35° 50.047' N	105° 45.125' W	Helispot	268	10380	35° 55.132' N	105° 35.325' W	Helispot	739	8952	35° 49.627' N	105° 38.307' W
					Helispot	269	10550	35° 55.553' N	105° 34.545' W	Helispot	75	8000	35° 51.797' N	105° 25.715' W
Dip Site	Kemp Dip	7700	36° 05.299' N	105° 12.533' W	Helispot	270	9500	35° 44.807' N	105° 38.219' W	Incident Command Post	North Zone ICP	6969	36° 24.566' N	105° 34.409' W
Dip Site	Lake Isabel Dip	6760	35° 45.483' N	105° 08.628' W	Helispot	272	10630	35° 55.803' N	105° 34.122' W					
Dip Site	Lost Dip	9900	35° 51.160' N	105° 30.932' W	Helispot	280	11890	35° 57.362' N	105° 30.458' W	Lookout		8200	35° 48.360' N	105° 24.606' W
Dip Site	Monastery	7800	36° 10.135' N	105° 36.269' W	Helispot	290	10340	35° 52.137' N	105° 44.801' W	Lookout		8080	36° 03.473' N	105° 18.557' W
Dip Site	Morphy Dip	7870	35° 56.487' N	105° 23.895' W	Helispot	320	9900	36° 07.140' N	105° 31.260' W	Lookout		8800	36° 08.298' N	105° 31.782' W
Dip Site	Trucker Dip	8230	35° 54.243' N	105° 26.819' W	Helispot	322	10120	36° 06.140' N	105° 30.750' W	Lookout		9480	36° 06.693' N	105° 32.064' W
Dip Site	Winsor Dip		35° 50.070' N	105° 43.051' W	Helispot	331	10300	36° 05.410' N	105° 30.630' W	Lookout		8920	36° 07.383' N	105° 38.038' W
Helibase	Taos Airport	7096	36° 27.239' N	105° 40.811' W	Helispot	332	8400	36° 08.068' N	105° 31.854' W	Lookout		9800	36° 07.944' N	105° 24.985' W
Helispot	220	8125	35° 45.322' N	105° 39.861' W	Helispot	339	10600	36° 10.185' N	105° 25.292' W	Lookout			35° 50.002' N	105° 38.940' W
Helispot	221	9069	35° 45.915' N	105° 39.347' W	Helispot	340	9800	36° 07.968' N	105° 25.398' W	Lookout	Gallegos	10400	36° 10.643' N	105° 31.405' W
Helispot	225	9845	35° 46.530' N	105° 37.650' W	Helispot	341	9900	36° 06.757' N	105° 26.963' W	Restricted Water Source		9800	36° 08.967' N	105° 25.169' W
Helispot	227	9840	35° 47.160' N	105° 36.280' W	Helispot	342	10500	36° 06.249' N	105° 36.008' W	Restricted Water Source				
Helispot	228	9616	35° 46.940' N	105° 36.480' W	Helispot	350	10000	36° 19.565' N	105° 19.933' W	Restricted Water Source	Martinez Pond	9800	36° 09.104' N	105° 25.411' W
Helispot	229	11473	35° 46.750' N	105° 33.090' W	Helispot	351	10000	36° 21.085' N	105° 20.017' W					
Helispot	230	10465	35° 53.795' N	105° 35.027' W	Helispot	461	11400	36° 05.875' N	105° 33.952' W	Sling Site	Elk Sling		35° 46.128' N	105° 38.692' W
Helispot	240	9840	35° 49.218' N	105° 37.923' W						Sling Site	Grass Sling	9080	35° 47.680' N	105° 38.850' W
Helispot	242	9000	35° 50.702' N	105° 39.251' W						Sling Site	Lark Spur Sling		35° 52.987' N	105° 35.616' W
										Sling Site	Rio Sling		35° 51.717' N	105° 34.920' W



PILOT North Zone 6/24/2022 Day
Hermits Peak NM-SNF-000027 341,735 acres at
Calf Canyon NM-SNF-000028 06/23/2022 21:00

Zone Break Line	Helispot	Incident Command Post	Transmission Station	Temporary Flight Restriction
Aerial Hazard	Helibase	Camp	Powerline	Structure
Airstrip or Airport	Sling Site	Lookout	Aerial Hazard	Contained
Aviation Check Point	Division Break	Repeater	Aviation Route	Uncontained
Dip Site	Zone Break			

1:330,000 - SWIMT1 - 6/24/2022 0732 - Acres from IR and GPS - NAD 1983 2011 Datum, LatLong Grid

SOUTHWEST AREA INCIDENT MANAGEMENT TEAM 3