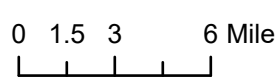

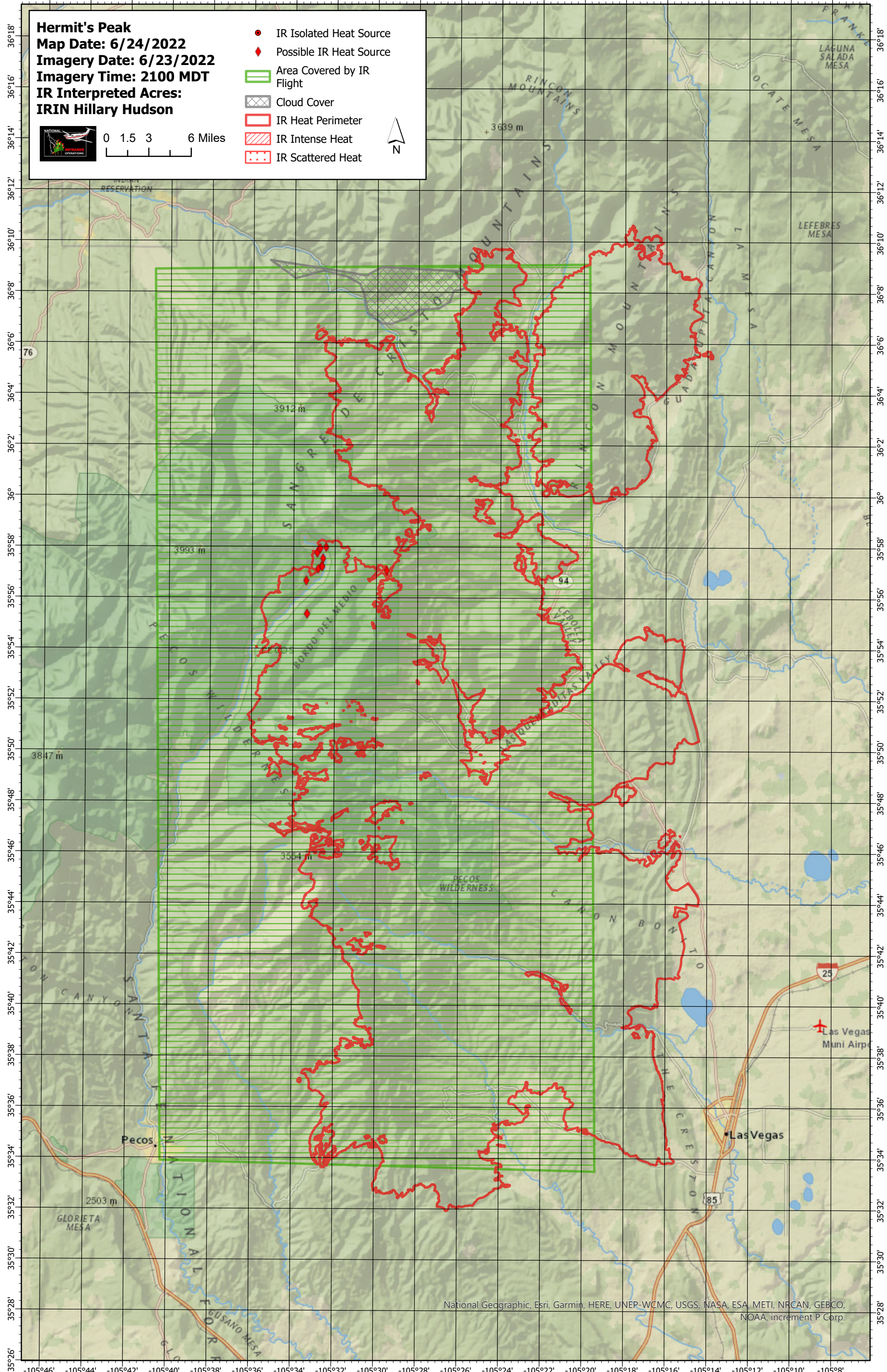


-105°46' -105°44' -105°42' -105°40' -105°38' -105°36' -105°34' -105°32' -105°30' -105°28' -105°26' -105°24' -105°22' -105°20' -105°18' -105°16' -105°14' -105°12' -105°10' -105°8'

Hermit's Peak
Map Date: 6/24/2022
Imagery Date: 6/23/2022
Imagery Time: 2100 MDT
IR Interpreted Acres:
IRIN Hillary Hudson

- IR Isolated Heat Source
- ◆ Possible IR Heat Source
- ▭ Area Covered by IR Flight
- ▨ Cloud Cover
- ▭ IR Heat Perimeter
- ▨ IR Intense Heat
- ▨ IR Scattered Heat

-105°46' -105°44' -105°42' -105°40' -105°38' -105°36' -105°34' -105°32' -105°30' -105°28' -105°26' -105°24' -105°22' -105°20' -105°18' -105°16' -105°14' -105°12' -105°10' -105°8'