

Repair Status

- In Use - Fire Management
- Needs Assessment
- Repair Needed
- In Progress
- Completed - Ready for Inspection
- Completed - Inspected
- No Repair Needed
- Other - See Comments

Calf Canyon

NMSNF000028

8/3/2022

REPAIR BRIEF NORTH EXTENT

- Helispot
- Drop Point
- Value at Risk
- Completed Dozer Line
- Completed Plow Line
- Other
- Camp
- Restricted Water Source
- Completed Fuel Break
- Completed Road as Line
- Repair Line
- Administrative FS Boundary
- Ranger District Boundary
- Federal Wilderness Boundary
- Fire History
- Access or Improved Road
- Completed Hand Line
- Contained
- Division Areas
- US Forest Service (USFS)
- Summit; Gap
- Road Repair
- Completed Mixed Construction Line
- Fence
- Power Lines
- Uncontained
- Bureau of Land Management (BLM)
- Wildfire Daily Fire Perimeter
- State
- Division Break
- Staging Area
- Completed Burnout
- Completed Hand Line
- Contained
- Bureau of Indian Affairs (BIA)
- Private
- Medical
- Lookout
- Completed Burnout
- Completed Mixed Construction Line
- Fence

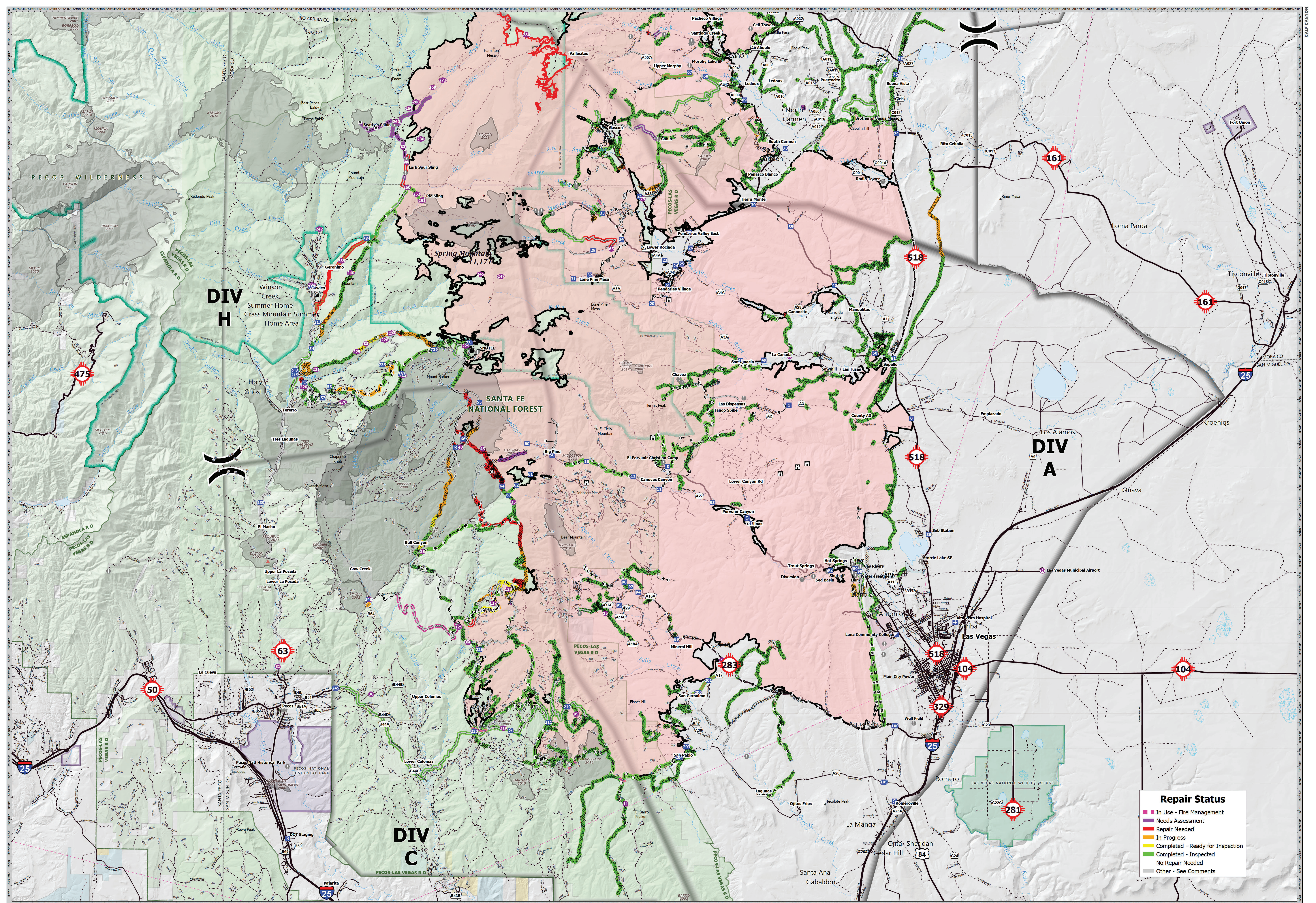
0 1 2 3 Miles
0 1/4 1/2 3/4 Kilometers



GIS Calculated Acres from IR and GPS
341,735 acres as of 7/5/2022 at 19:00
NAD 1983 UTM Zone 13N
1:66,000



REPAIR BRIEF



Repair Status

- In Use - Fire Management
- Needs Assessment
- Repair Needed
- In Progress
- Completed - Ready for Inspection
- Completed - Inspected
- No Repair Needed
- Other - See Comments

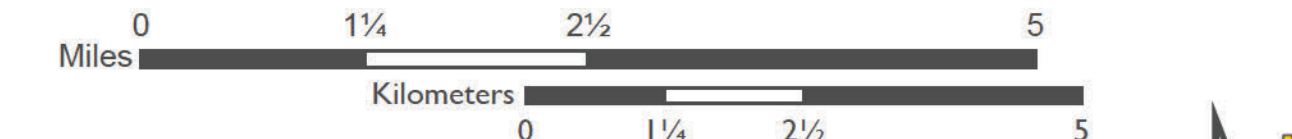
Calf Canyon

NMSNF000028

8/3/2022

REPAIR BRIEF SOUTH EXTENT

- | | | | | | | | | | |
|------------------|-------------------------|------------------------|-------------------------------------|---------------------------|----------------|------------------------------|-----------------------------------|--|---------------------------------|
| ● Helispot | Ⓜ Medical | Ⓜ Lookout | Ⓜ Completed Fuel Break | — Access or Improved Road | — Road Repair | — Administrative FS Boundary | — Federal Wilderness Boundary | — Department of Defense (DOD) | — US Forest Service (USFS) |
| Ⓜ Helibase | Ⓜ Incident Command Post | Ⓜ Value at Risk | — Completed Hand Line | — Fence | — Escape Route | — Ranger District Boundary | — Fire History | — National Park Service (NPS) | — Private |
| Ⓜ Sling Site | Ⓜ Drop Point | Ⓜ Summit; Gap | — Completed Mixed Construction Line | — Retardant Drop | — Contained | — Division Areas | — State | — State | — Wildfire Daily Fire Perimeter |
| Ⓜ Division Break | Ⓜ Staging Area | Ⓜ Completed Dozer Line | — Completed Road as Line | — Repair Line | — Power Lines | — Uncontained | — Bureau of Land Management (BLM) | — US Fish and Wildlife Service (USFWS) | |



GIS Calculated Acres from IR and GPS
 341,735 acres as of 7/5/2022 at 19:00
 NAD 1983 UTM Zone 13N
 Created 8/3/2022 7:34 PM by [Name]

Southwest Area
 Incident Management Team 5
 1:66,000

REPAIR BRIEF