

**Repair Status**

- In Use - Fire Management
- Needs Assessment
- Repair Needed
- In Progress
- Completed - Ready for Inspection
- Completed - Inspected
- No Repair Needed
- Other - See Comments

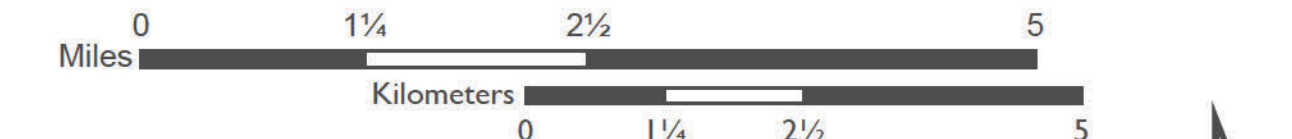
# Calf Canyon

NMSNF000028

8/4/2022

## REPAIR BRIEF NORTH EXTENT

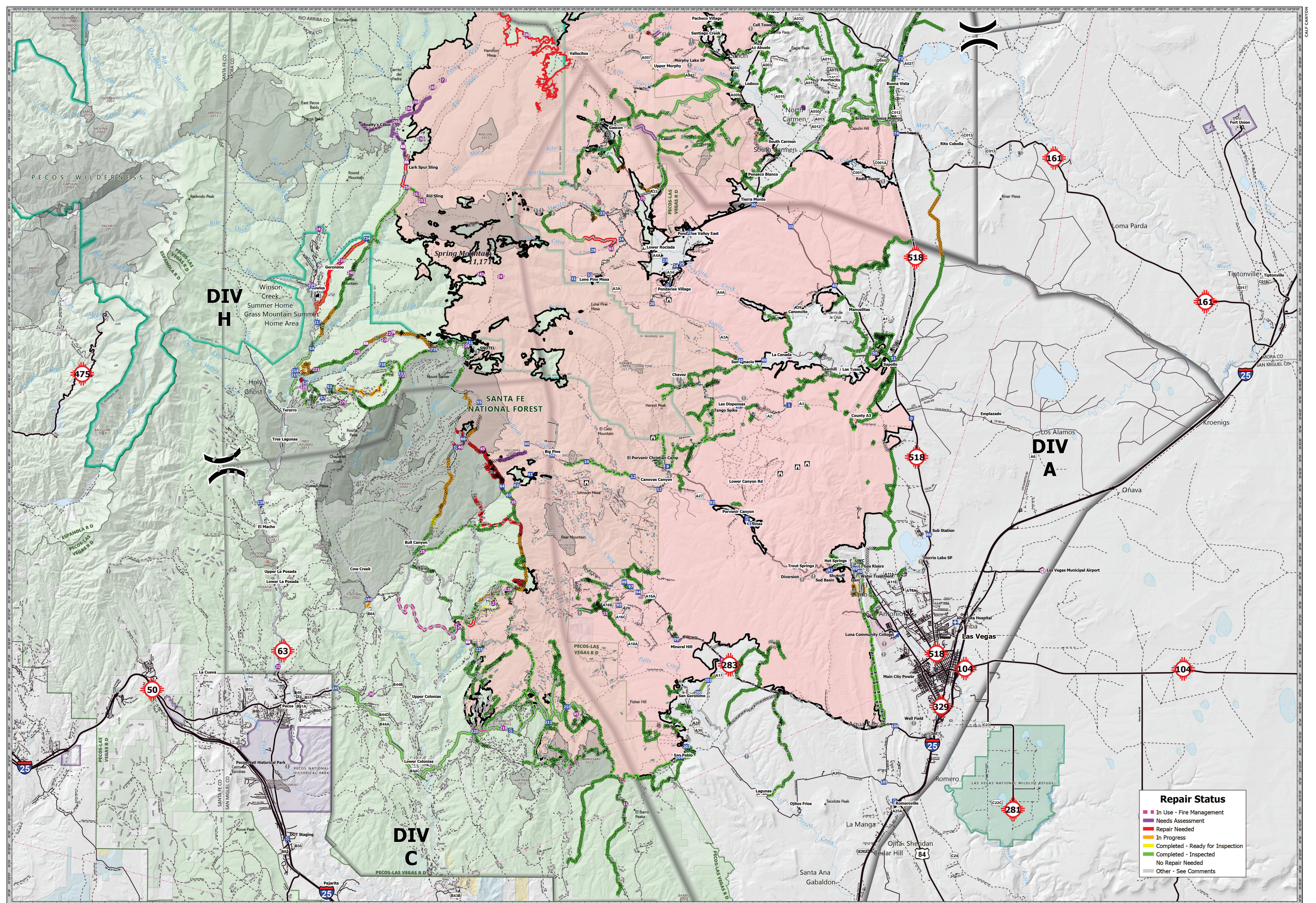
- Helispot
- Drop Point
- ⊕ Value at Risk
- ⊗ Completed Dozer Line
- Completed Plow Line
- Other
- Administrative FS Boundary
- Federal Wilderness Boundary
- Bureau of Land Management (BLM)
- Wildfire Daily Fire Perimeter
- ⊗ Helibase
- Camp
- ⊕ Restricted Water Source
- ⊗ Completed Fuel Break
- Completed Road as Line
- Repair Line
- Ranger District Boundary
- Fire History
- ⊗ Division Break
- ⊗ Staging Area
- ⊗ Summit; Gap
- Access or Improved Road
- Road Repair
- Contained
- Division Areas
- US Forest Service (USFS)
- ⊗ Medical
- ⊗ Lookout
- ⊗ Completed Burnout
- Completed Mixed Construction Line
- Fence
- Power Lines
- Uncontained
- Contained
- Bureau of Indian Affairs (BIA)
- Private



GIS Calculated Acres from IR and GPS  
 341,735 acres as of 7/5/2022 at 19:00  
 NAD 1983 UTM Zone 13N  
 1:66,000



REPAIR BRIEF



**Repair Status**

- In Use - Fire Management
- Needs Assessment
- Repair Needed
- In Progress
- Completed - Ready for Inspection
- Completed - Inspected
- No Repair Needed
- Other - See Comments

0 1 2 3 Miles  
0 1 2 3 Kilometers

GIS Calculated Acres from IR and GPS  
341,735 acres as of 7/5/2022 at 19:00  
NAD 1983 UTM Zone 13N  
Created 8/3/2022 12:19 PM by [Name]

1:66,000

# Calf Canyon

NMSNF000028

8/4/2022

## REPAIR BRIEF SOUTH EXTENT

- |                  |                         |                        |                                     |                           |                  |                              |                                   |  |                                 |
|------------------|-------------------------|------------------------|-------------------------------------|---------------------------|------------------|------------------------------|-----------------------------------|--|---------------------------------|
| ● Helispot       | Ⓜ Medical               | Ⓜ Lookout              | Ⓜ Completed Fuel Break              | — Access or Improved Road | — Road Repair    | — Administrative FS Boundary | — Federal Wilderness Boundary     | — Department of Defense (DOD)          | — US Forest Service (USFS)      |
| ● Helibase       | Ⓜ Incident Command Post | Ⓜ Value at Risk        | — Completed Hand Line               | — Fence                   | — Escape Route   | — Ranger District Boundary   | — Fire History                    | — National Park Service (NPS)          | — Private                       |
| ● Sling Site     | Ⓜ Drop Point            | Ⓜ Summit; Gap          | — Completed Mixed Construction Line | — Other                   | — Retardant Drop | — Contained                  | — Division Areas                  | — State                                | — Wildfire Daily Fire Perimeter |
| Ⓜ Division Break | Ⓜ Staging Area          | Ⓜ Completed Dozer Line | — Completed Road as Line            | — Repair Line             | — Power Lines    | — Uncontained                | — Bureau of Land Management (BLM) | — US Fish and Wildlife Service (USFWS) |                                 |