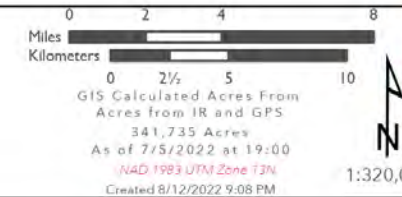


Calf Canyon
 NMSNF000028
 8/13/2022

PUBLIC INFORMATION

- Airstrip or Airport
- Incident Command Post
- Fire Station
- Contained Fire Edge
- Uncontained Fire Edge
- US Forest Service Boundary
- County Boundary
- Wildfire Perimeter
- Campground
- Carson Closure
- Santa Fe Closure



SOUTHWEST AREA

 INCIDENT MANAGEMENT TEAM 3
 PUBLIC INFORMATION