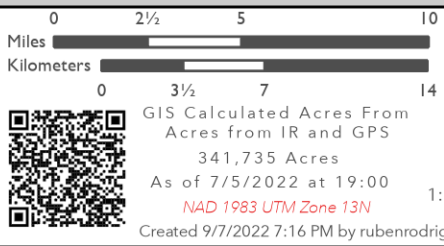


Calf Canyon
 NMSNF000028
 9/8/2022
PILOT

- Contained
- Aerial Hazard
- Airstrip or Airport
- Aviation Check Point
- Dip Site
- Helispot
- Helibase
- Sling Site
- Division Break
- Branch Break
- Incident Command Post
- Camp
- Lookout
- Repeater
- Safety Zone
- Water Source
- Restricted Water Source
- Aerial Hazard



SOUTHWEST AREA
 INCIDENT MANAGEMENT TEAM 5
 GIS Calculated Acres From Acres from IR and GPS
 341,735 Acres
 As of 7/5/2022 at 19:00
 NAD 1983 UTM Zone 13N
 Created 9/7/2022 7:16 PM by rubenrodriguez

FC Point Type	Label	Lat WGS84	Long WGS84	Comments
Airstrip or Airport		36° 27.612' N	105° 40.331' W	
Dip Site	230 Dip	35° 34.333' N	105° 37.232' W	Two 6000 Gal Tanks
Dip Site	Blue Dip	35° 33.359' N	105° 16.211' W	Waiting on approval from land owner
Dip Site	Bradner Reservoir Dip	35° 38.742' N	105° 16.462' W	Bradner Reservoir. Approved for helicopter use. LUA in place.
Dip Site	Circle Dip	36° 05.429' N	105° 19.752' W	
Dip Site	Collins Lake	35° 59.699' N	105° 23.041' W	Archive
Dip Site	Cow Creek Dip	35° 38.534' N	105° 35.630' W	08-24-22 REAF Kallstrom: Conditions in area approved by pvt landowner based on conversation w/ Div trainee. Site not visited.
Dip Site	Enchanted Lake Dip	35° 57.014' N	105° 28.858' W	Archive
Dip Site	Evergreen Dip	35° 43.531' N	105° 29.236' W	Pond is completely filled, muddy due to recent flooding but full, no other impacts, no repair needed ARCH Naylor 26 Jul 2022
Dip Site	Fire Station Dip	36° 11.385' N	105° 13.967' W	
Dip Site	Gulf Dip	35° 49.197' N	105° 24.683' W	Archive
Dip Site	Katherine Lake Dip	35° 50.047' N	105° 45.125' W	
Dip Site	Kemp Dip	36° 05.299' N	105° 12.533' W	Used on 5/12/22
Dip Site	Lake Isabel Dip	35° 45.483' N	105° 08.628' W	Scooper Dip
Dip Site	Longhorn Pond Dip	35° 34.080' N	105° 24.534' W	Not recommended for CH-47's or tanked Rotor
Dip Site	Lost Dip	35° 51.160' N	105° 30.932' W	
Dip Site	Monastery	36° 10.135' N	105° 36.269' W	Bucketed Aircraft Only
Dip Site	Monastery Lake Dip	35° 35.922' N	105° 40.915' W	Do not use, Close Proximity to an active movie set. //08-22-22 REAF Stiles & Kallstrom. No repairs necessary.
Dip Site	Ranch Dip	35° 35.829' N	105° 22.376' W	Working to establish LUA
Dip Site	River Dip	35° 35.160' N	105° 23.924' W	Tecolote Creek, North of San Geronimo
Dip Site	Triple Dip	35° 41.023' N	105° 32.428' W	Looks good- no issues
Dip Site	Viveash Dip	35° 42.023' N	105° 37.691' W	
Dip Site	Winsor Dip	35° 50.070' N	105° 43.051' W	
Helibase	Las Vegas Municipal Airport	35° 39.160' N	105° 08.956' W	Repairs complete no flagging or signs
Helibase	Taos Airport	36° 27.239' N	105° 40.811' W	
Helispot	220	35° 45.322' N	105° 39.861' W	
Helispot	280	35° 57.362' N	105° 30.620' W	
Helispot	31	35° 35.783' N	105° 40.858' W	Monastery helispot . 8-22-22 REAF Stiles & Kallstrom. No repairs necessary.
Helispot	320	36° 07.140' N	105° 31.261' W	
Helispot	322	36° 06.140' N	105° 30.751' W	
Helispot	331	36° 05.410' N	105° 30.631' W	
Helispot	332	36° 08.068' N	105° 31.855' W	Type 2 & 3 Approved. Approved by ASGS. Power lines to the East.
Helispot	339	36° 10.185' N	105° 25.292' W	Type 2/3
Helispot	340	36° 07.968' N	105° 25.398' W	Type III
Helispot	341	36° 06.757' N	105° 26.963' W	Type III
Helispot	350	36° 19.565' N	105° 19.933' W	
Helispot	351	36° 21.085' N	105° 20.017' W	
Helispot	352	36° 20.369' N	105° 19.787' W	Submitted by AirOps Faria 08/11
Helispot	353	36° 17.400' N	105° 28.724' W	Submitted by AirOps Faria 08/11
Helispot	354	36° 17.132' N	105° 30.635' W	Submitted by AirOps Faria 08/11
Helispot	355	36° 20.103' N	105° 17.937' W	Submitted by AirOps Faria 08/11
Helispot	356	36° 16.548' N	105° 19.588' W	Submitted by AirOps Faria 08/11
Helispot	357	36° 16.803' N	105° 26.005' W	Submitted by AirOps Faria 08/11
Helispot	462	36° 06.020' N	105° 34.955' W	Submitted by AirOps Faria 08/11
Helispot	463	36° 05.870' N	105° 32.664' W	
Helispot	501	36° 07.162' N	105° 38.443' W	
Helispot	507	36° 03.300' N	105° 40.333' W	Type III
Helispot	510	36° 03.813' N	105° 39.651' W	Type III
Helispot	55	35° 46.453' N	105° 19.553' W	Installed pad marker and signage, good vehicle access, flight hazard is a power line 300 yards south of the pad marker that runs east/west.
Helispot	736	35° 48.795' N	105° 39.538' W	
Helispot	95	35° 34.226' N	105° 28.404' W	Located Near CMD Repeater
Incident Command Post		36° 23.223' N	105° 34.723' W	
Repeater	CMD 10	35° 54.223' N	105° 22.377' W	
Repeater	CMD 11 and L7	35° 34.130' N	105° 28.416' W	updated location 8/11
Repeater	CMD 12	36° 09.599' N	105° 00.651' W	Los Naranjos Peak
Repeater	CMD 13 and L1	36° 14.038' N	105° 24.765' W	Located at Cerro Vista, updated location 8/11
Repeater	CMD 15	36° 22.572' N	105° 14.222' W	Moved 6/1, updated location 8/11
Repeater	CMD 16	35° 54.738' N	105° 39.271' W	
Repeater	CMD 17	36° 14.817' N	105° 39.279' W	Picuris Peak
Repeater	CMD 29	35° 44.669' N	105° 24.931' W	updated location 8/11
Repeater	CMD 7	35° 45.880' N	105° 33.924' W	
Repeater	CMD 8 and RDPR	35° 38.063' N	105° 14.392' W	updated location 4/30, updated location 8/11
Restricted Water Source		36° 08.967' N	105° 25.170' W	Pond. Do not use.
Restricted Water Source	Martinez Pond	36° 09.104' N	105° 25.411' W	Land owner does not want the fire to use this pond
Sling Site		35° 36.649' N	105° 32.927' W	
Sling Site		35° 53.517' N	105° 35.770' W	Half Lark Sling
Sling Site	Lark Spur Sling	35° 52.987' N	105° 35.617' W	
Sling Site	Rio Sling	35° 51.717' N	105° 34.921' W	Needs Approval