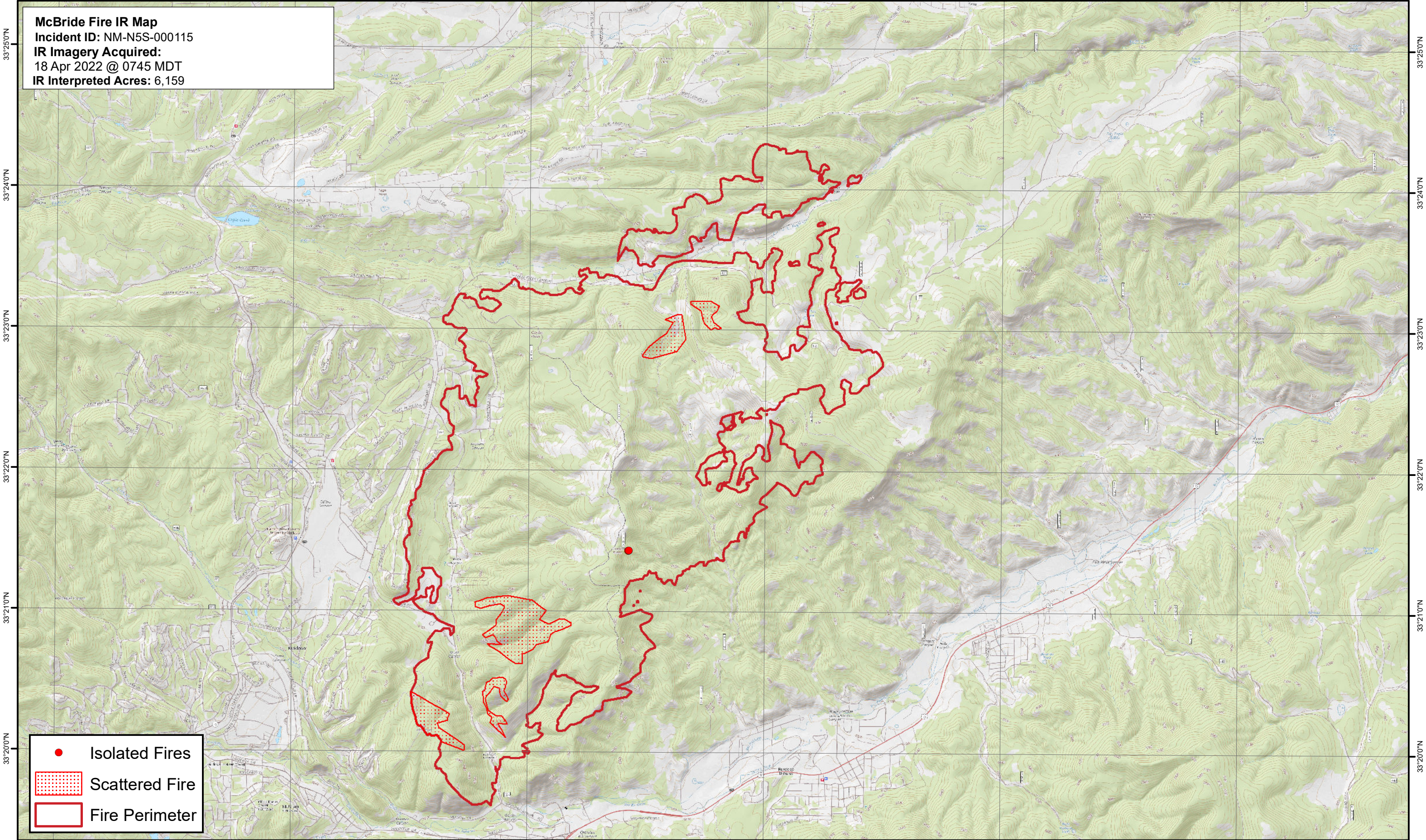




105°42'0"W 105°40'0"W 105°38'0"W 105°36'0"W 105°34'0"W 105°32'0"W

McBride Fire IR Map
Incident ID: NM-N5S-000115
IR Imagery Acquired:
18 Apr 2022 @ 0745 MDT
IR Interpreted Acres: 6,159



● Isolated Fires
▨ Scattered Fire
▭ Fire Perimeter

0 0.5 1 2 3 4 Miles

Map date: 4/18/2022
Map created with USGS 24K Quads; Projection: WGS 1984 UTM Zone 13N