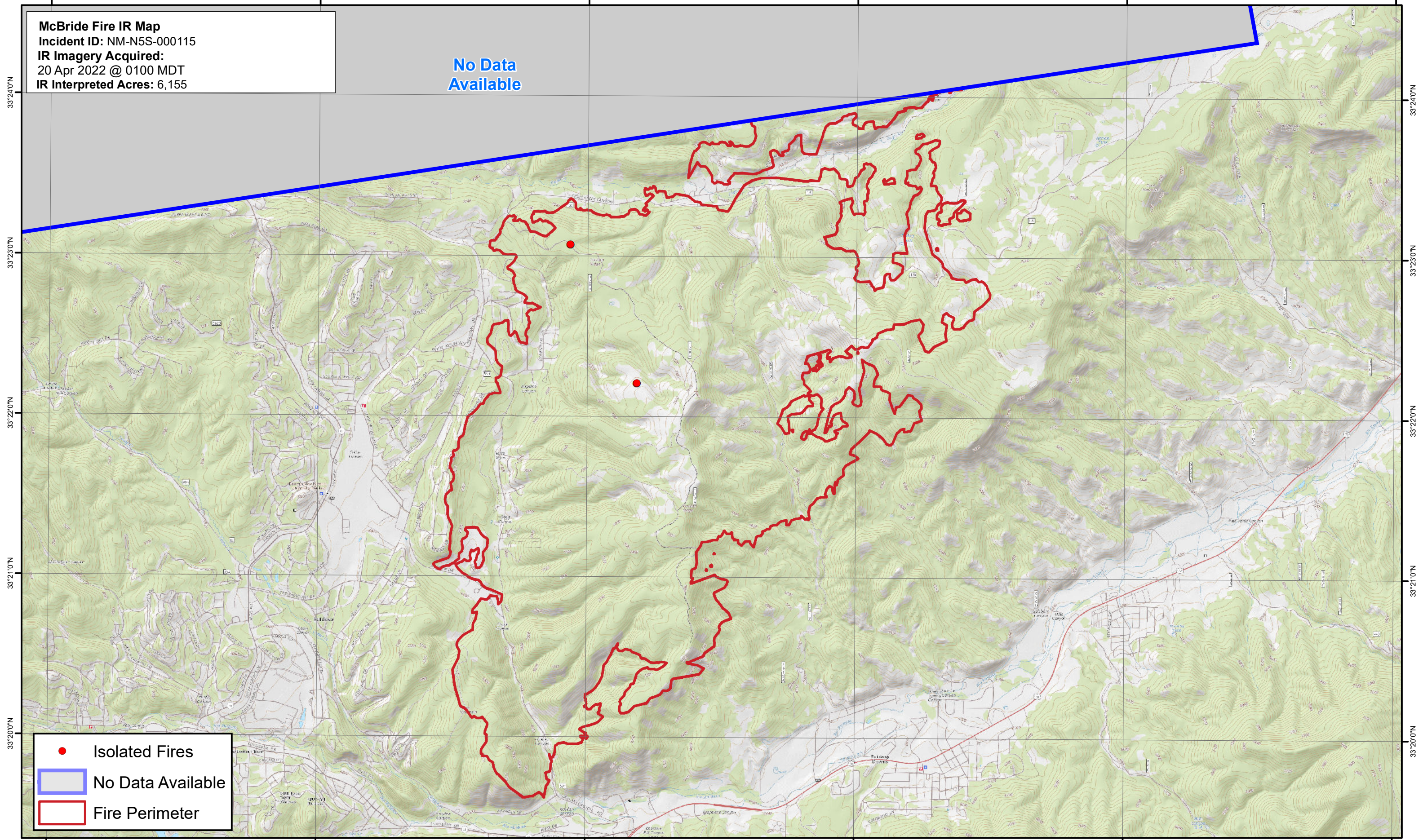


105°42'0"W 105°40'0"W 105°38'0"W 105°36'0"W 105°34'0"W 105°32'0"W

**McBride Fire IR Map**  
Incident ID: NM-N5S-000115  
IR Imagery Acquired:  
20 Apr 2022 @ 0100 MDT  
IR Interpreted Acres: 6,155

No Data Available



- Isolated Fires
- No Data Available
- ▭ Fire Perimeter

0 0.5 1 2 3 4 Miles

Map date: 4/20/2022

Map created with USGS 24K Quads; Projection: WGS 1984 UTM Zone 13N