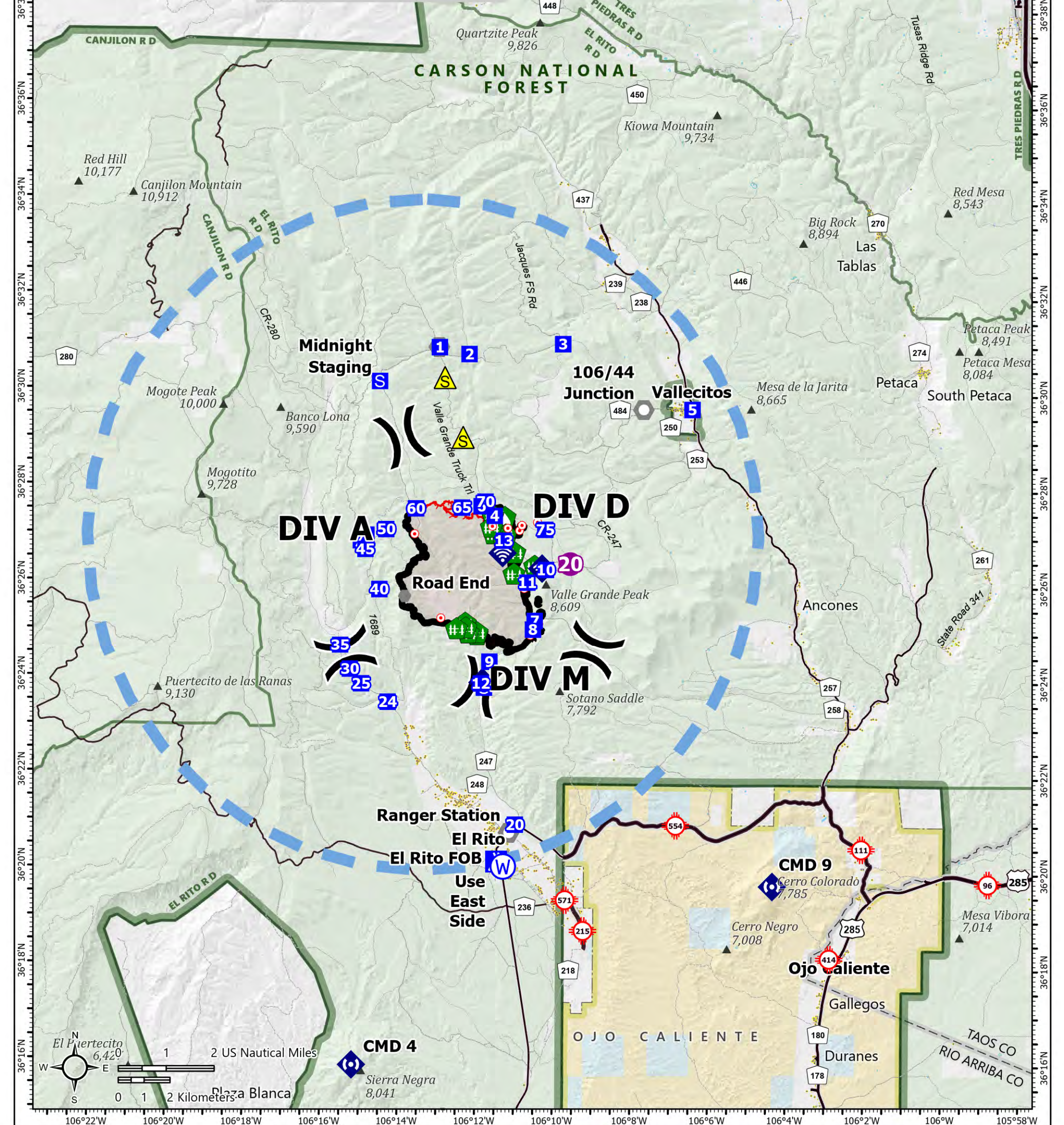


106°22'W 106°20'W 106°18'W 106°16'W 106°14'W 106°12'W 106°10'W 106°8'W 106°6'W 106°4'W 106°2'W 106°W 105°58'W

Point Type	Label	Lat WGS84	Long WGS84	Point Type	Label	Lat WGS84	Long WGS84	Point Type	Label	Lat WGS84	Long WGS84	Point Type	Label	Lat WGS84	Long WGS84
Drop Point	45	36° 26.694' N	106° 14.984' W	Fence - Cut/ Damaged		36° 26.895' N	106° 11.396' W	Fence - Cut/ Damaged		36° 26.884' N	106° 11.401' W	Hot Spot - Spot Fire		36° 27.649' N	106° 12.471' W
Drop Point	5	36° 29.675' N	106° 06.573' W	Fence - Cut/ Damaged		36° 26.945' N	106° 11.438' W	Fence - Cut/ Damaged		36° 27.186' N	106° 11.734' W	Hot Spot - Spot Fire		36° 27.338' N	106° 11.676' W
Drop Point	50	36° 27.112' N	106° 14.452' W	Fence - Cut/ Damaged		36° 26.998' N	106° 11.454' W	Fence - Cut/ Damaged		36° 25.060' N	106° 12.606' W	Internet Access		36° 26.643' N	106° 11.435' W
Drop Point	6	36° 27.613' N	106° 11.993' W	Fence - Cut/ Damaged		36° 27.428' N	106° 11.704' W	Fire Station		36° 20.088' N	106° 11.354' W	Internet Access		36° 23.929' N	106° 11.916' W
Drop Point	60	36° 27.552' N	106° 13.688' W	Fence - Cut/ Damaged		36° 26.999' N	106° 11.467' W	Helispot	20	36° 26.428' N	106° 09.685' W	Internet Access		36° 26.326' N	106° 10.411' W
Drop Point	65	36° 27.580' N	106° 12.497' W	Fence - Cut/ Damaged		36° 27.028' N	106° 11.363' W	Hot Spot - Spot Fire		36° 27.021' N	106° 13.717' W	Internet Access		36° 26.326' N	106° 10.411' W
Drop Point	7	36° 25.233' N	106° 10.587' W	Fence - Cut/ Damaged		36° 27.028' N	106° 11.363' W	Hot Spot - Spot Fire		36° 25.273' N	106° 13.014' W	Landmark		36° 30.929' N	106° 13.138' W
Drop Point	70	36° 27.710' N	106° 11.894' W	Fence - Cut/ Damaged		36° 26.662' N	106° 11.133' W	Hot Spot - Spot Fire		36.41553397	-106.17823790	Landmark	106/44 Junction	36° 20.798' N	106° 11.195' W
Drop Point	75	36° 27.137' N	106° 10.342' W	Fence - Cut/ Damaged		36° 26.214' N	106° 11.136' W	Hot Spot - Spot Fire		36.41940310	-106.17469252	Other	Road End	36° 25.726' N	106° 13.953' W
Drop Point	8	36° 25.053' N	106° 10.629' W	Fence - Cut/ Damaged		36° 24.939' N	106° 12.071' W	Hot Spot - Spot Fire		36.41826697	-106.17728529	Repair Point		36° 26.899' N	106° 11.395' W
Drop Point	9	36° 24.361' N	106° 11.743' W	Fence - Cut/ Damaged		36° 27.053' N	106° 11.671' W	Hot Spot - Spot Fire		36.41886142	-106.17631802	Repeater	CMD 4	36° 15.922' N	106° 15.187' W
Fence - Cut/ Damaged		36° 27.026' N	106° 11.357' W	Fence - Cut/ Damaged		36° 27.052' N	106° 11.673' W	Hot Spot - Spot Fire		36.43175580	-106.18112848	Repeater	CMD 9	36° 19.729' N	106° 04.383' W
Fence - Cut/ Damaged		36° 26.383' N	106° 10.604' W	Fence - Cut/ Damaged		36° 26.656' N	106° 11.123' W	Hot Spot - Spot Fire		36° 27.198' N	106° 11.708' W	Safety Zone		36° 30.289' N	106° 12.979' W
Fence - Cut/ Damaged		36° 27.425' N	106° 11.701' W	Fence - Cut/ Damaged		36° 24.974' N	106° 12.306' W	Hot Spot - Spot Fire		36° 27.289' N	106° 10.542' W	Safety Zone		36° 29.046' N	106° 12.493' W
Fence - Cut/ Damaged		36° 27.001' N	106° 11.467' W	Fence - Cut/ Damaged		36° 24.983' N	106° 12.072' W	Hot Spot - Spot Fire		36° 27.161' N	106° 11.309' W	Staging Area		36° 23.819' N	106° 11.877' W
Fence - Cut/ Damaged		36° 27.001' N	106° 11.467' W	Fence - Cut/ Damaged		36° 24.976' N	106° 12.304' W	Hot Spot - Spot Fire		36° 27.115' N	106° 11.005' W	Staging Area	Midnight Staging	36° 30.201' N	106° 14.660' W
Fence - Cut/ Damaged		36° 27.028' N	106° 11.361' W	Fence - Cut/ Damaged		36° 25.178' N	106° 12.380' W	Hot Spot - Spot Fire		36° 27.223' N	106° 10.944' W	Water Source	Use East Side	36° 20.091' N	106° 11.333' W
Fence - Cut/ Damaged		36° 26.661' N	106° 11.132' W	Fence - Cut/ Damaged		36° 25.080' N	106° 12.362' W	Hot Spot - Spot Fire							



PILOT

Midnight NM-CAF-000200

1:150,000 - SWIMT1 - 6/18/2022 2038 - Acres from IR and GPS - North American 1983 Datum. LatLong Grid

6/19/2022 Day

4,896 acres at 06/17/2022 21:54

● Helispot	● Hot Spot - Spot Fire	● Repair Point	● Repeater	● Wildfire Daily Fire Perimeter
⌋ Division Break	● Other	⌋ Fence - Cut/ Damaged	⌋ Safety Zone	● Temporary Flight Restriction
■ Drop Point	● Landmark	⌋ Dozer Push	⌋ Water Source	● Contained
▲ Camp	● Fire Station	⌋ Internet Access	⌋ Powerline	● Uncontained
Ⓢ Staging Area				