

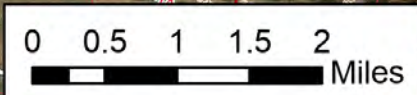
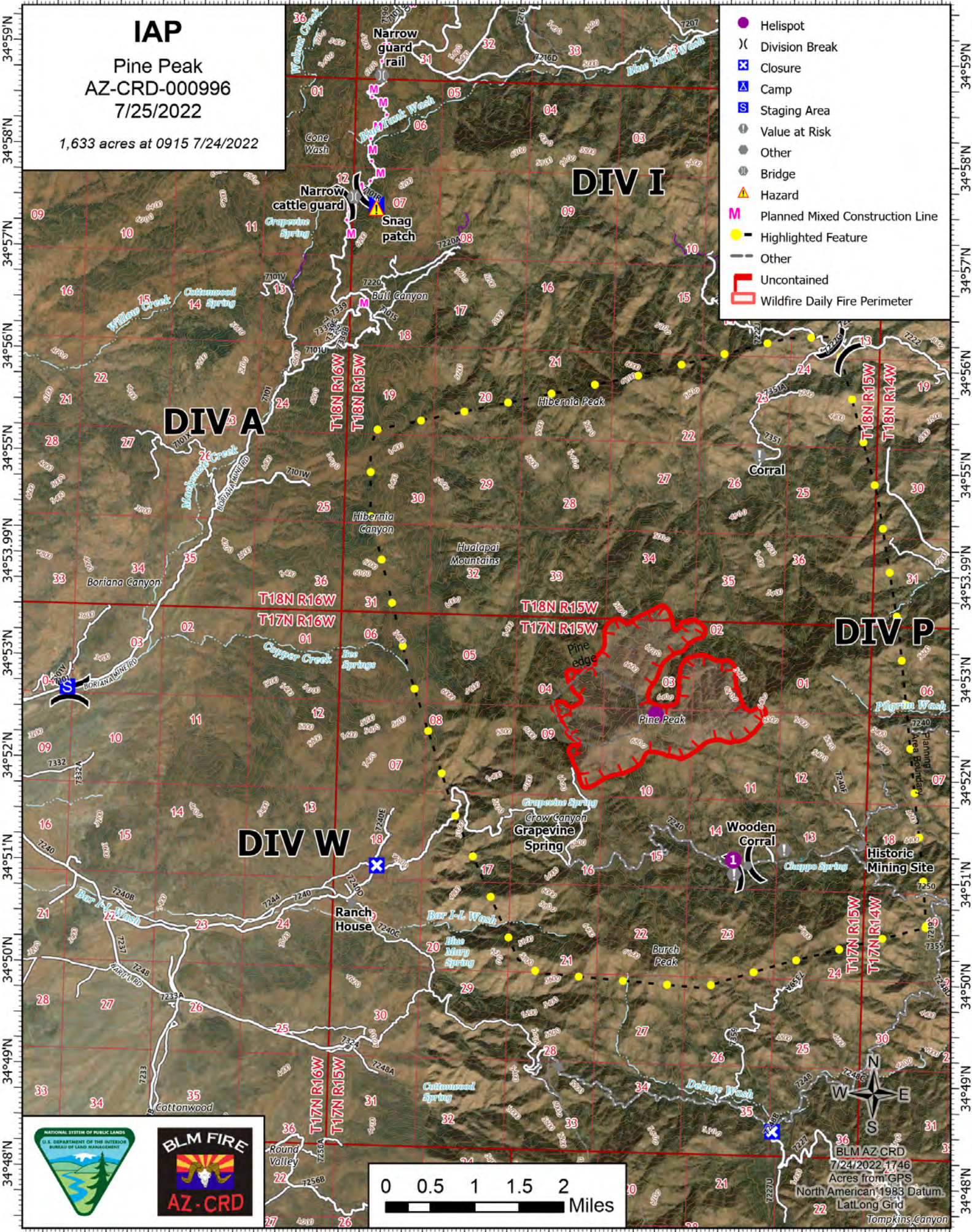
113°58.51'W 113°57.5'W 113°56.5'W 113°55.5'W 113°54.5'W 113°53.5'W 113°52.5'W 113°51.5'W 113°50.5'W 113°49.5'W 113°48.5'W

IAP

Pine Peak
AZ-CRD-000996
7/25/2022

1,633 acres at 0915 7/24/2022

- Helispot
- ⌘ Division Break
- ⊠ Closure
- ⊠ Camp
- ⊠ Staging Area
- Value at Risk
- Other
- Bridge
- ▲ Hazard
- M Planned Mixed Construction Line
- Highlighted Feature
- Other
- ⊠ Uncontained
- ⊠ Wildfire Daily Fire Perimeter



N
W E
S

BLM AZ CRD
7/24/2022 1746
Acres from GPS
North American 1983 Datum
Lat/Long Grid
Tompkins Canyon

113°58'W 113°57'W 113°56'W 113°55'W 113°54'W 113°53'W 113°52'W 113°51.01'W 113°50'W 113°49'W 113°48'W