

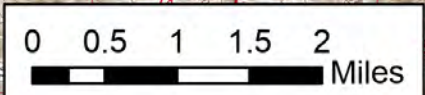
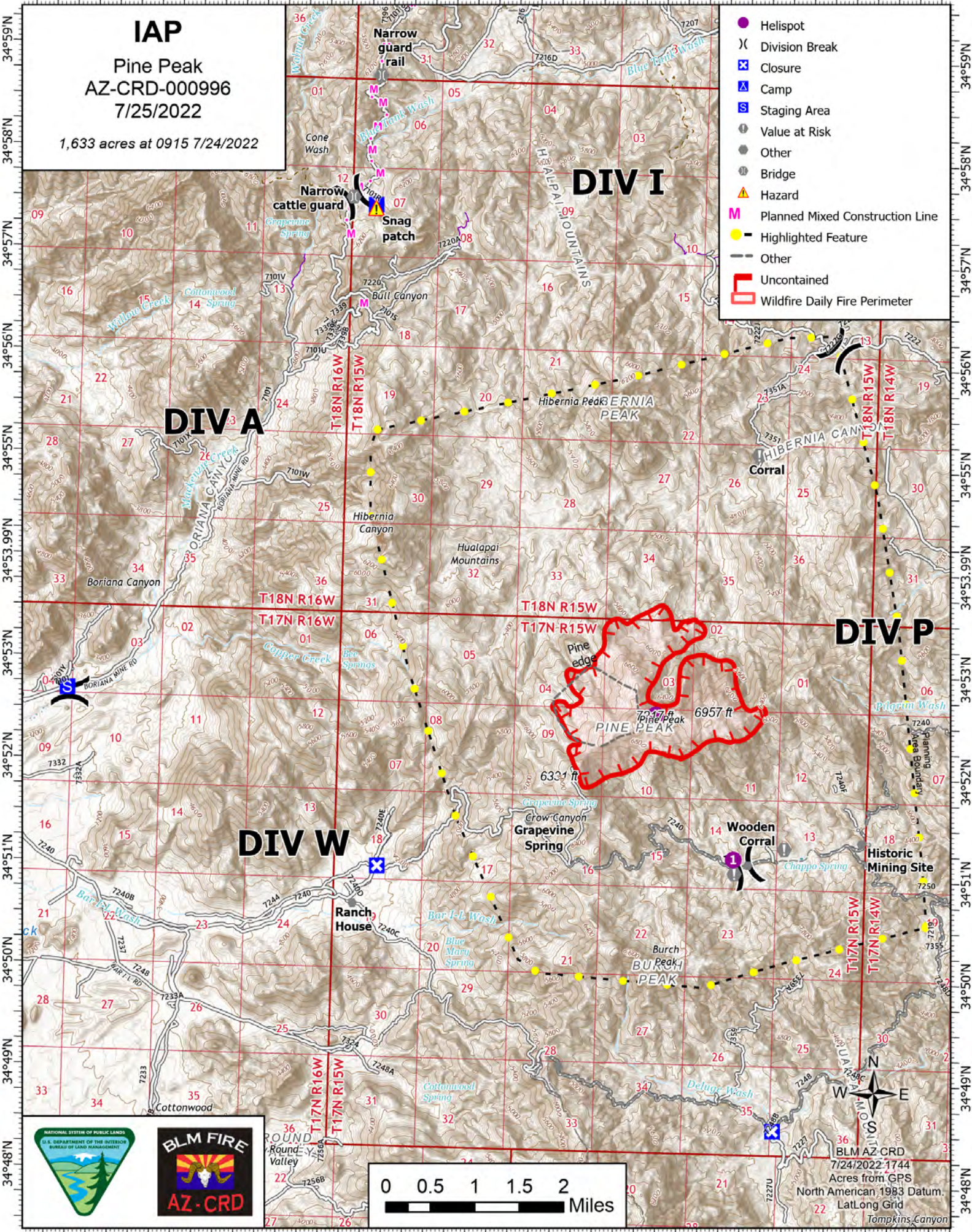
113°58.51'W 113°57.5'W 113°56.5'W 113°55.5'W 113°54.5'W 113°53.5'W 113°52.5'W 113°51.5'W 113°50.5'W 113°49.5'W 113°48.5'W

IAP

Pine Peak
AZ-CRD-000996
7/25/2022

1,633 acres at 0915 7/24/2022

- Helispot
- X Division Break
- ⊠ Closure
- ⊠ Camp
- S Staging Area
- Value at Risk
- Other
- Bridge
- ▲ Hazard
- M Planned Mixed Construction Line
- Highlighted Feature
- Other
- ⬮ Uncontained
- ⬮ Wildfire Daily Fire Perimeter



BLM AZ CRD
7/24/2022-1744
Acres from GPS
North American 1983 Datum
Lat/Long Grid
Tompkins Canyon